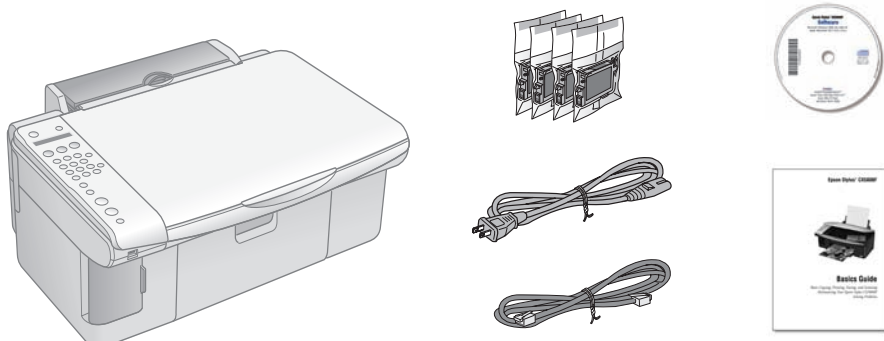


Start Here

Epson Stylus® CX5800F

1 *Unpack*

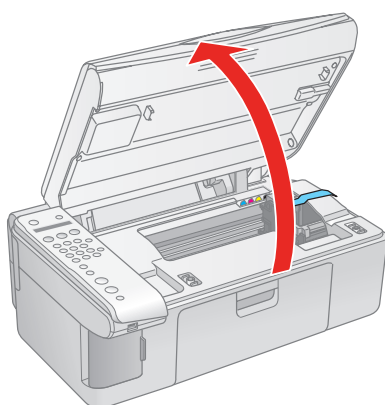
Remove all the tape.



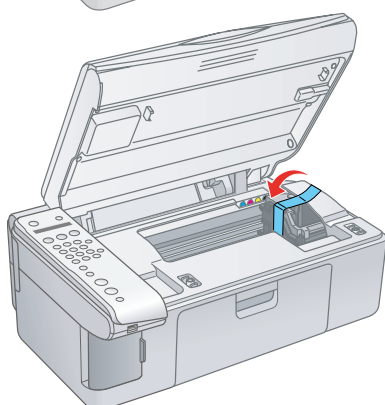
If anything is missing, contact Epson® as described on the back in "Any Questions?".

2 *Unlock the Printer*

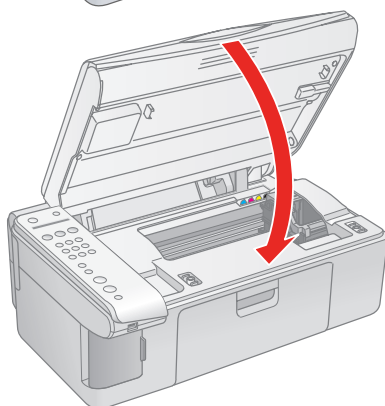
1 Lift up the scanner.



2 Remove the tape from the ink cartridge holder.



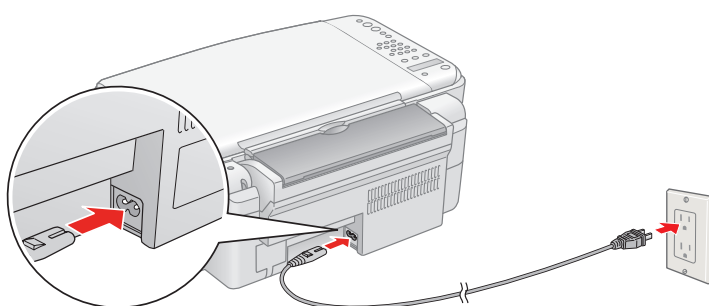
3 Close the scanner.



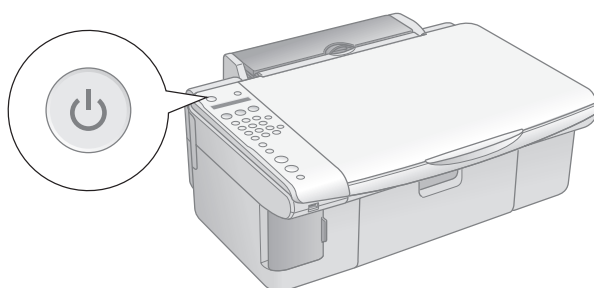
410409100

3 Turn On the Epson Stylus CX5800F

- 1 Connect the power cable.




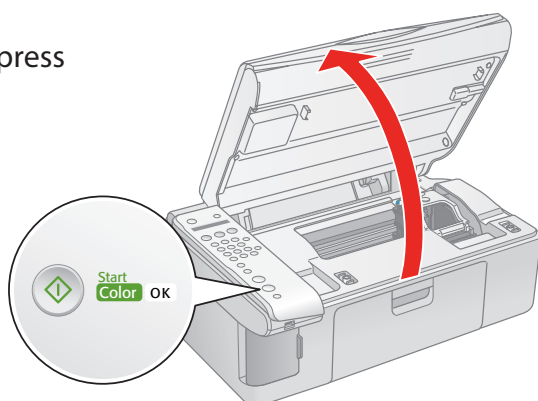
- 2 Press the  **On** button.



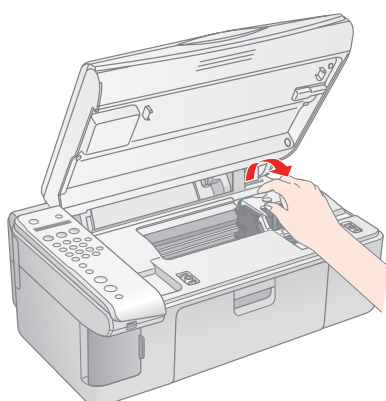
4 Install Ink Cartridges

Note: Don't load paper before installing the ink cartridges.

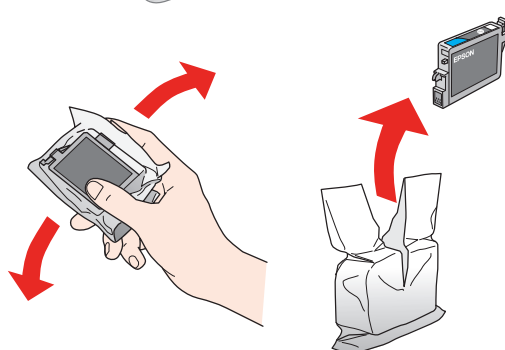
- 1 Lift up the scanner, then press the  **OK** button.



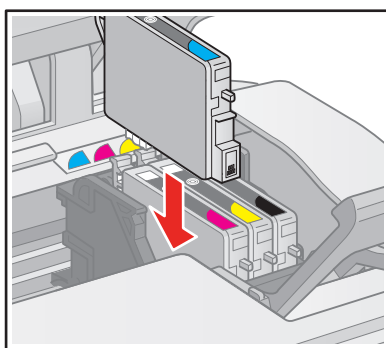
- 2 Open the ink cartridge cover.



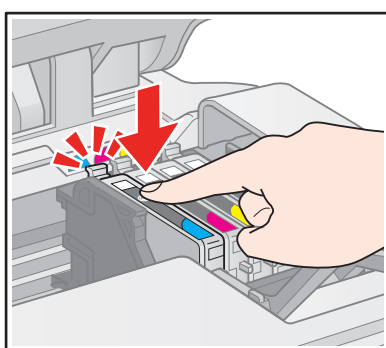
- 3 Shake the ink cartridges, then unpack them.



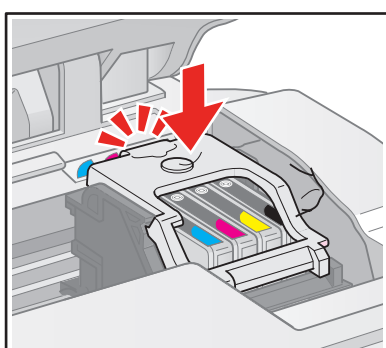
- 4 Insert the cartridges in the holder for each color.



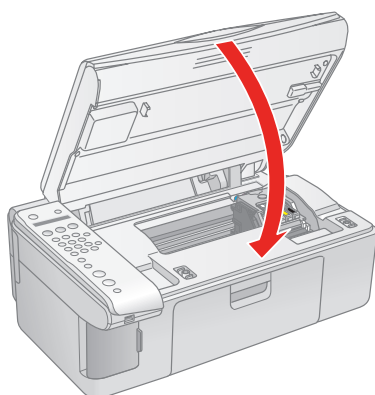
- 5 Press the cartridges down until they click.




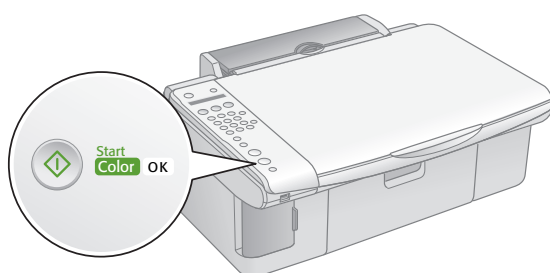
- 6 Close the ink cartridge cover and press it down until it clicks.



- 7 Close the scanner.



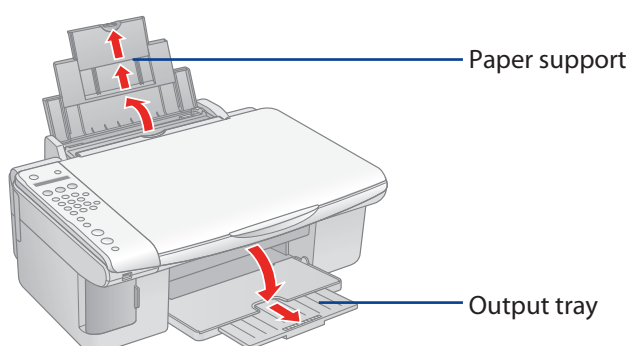
- 8 Press the  **OK** button to charge ink. Charging takes about 2 minutes.



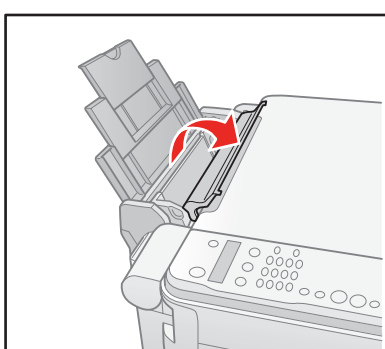
Caution: Don't turn off the Epson Stylus CX5800F while **Charging** appears on the LCD screen or you'll waste ink.

5 Load Paper

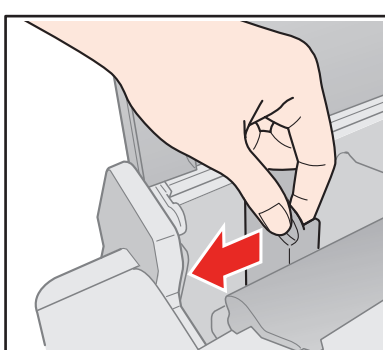
- 1 Open the paper support and pull up its extensions.
- 2 Open the output tray and pull out its extension.



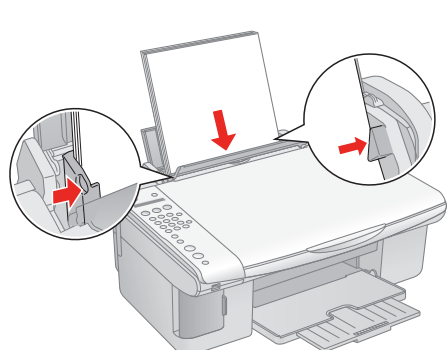
- 3 Flip the feeder guard forward.



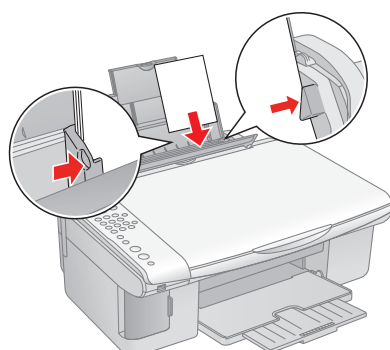
- 4 Slide the edge guide left.



- 5 Load paper against the right edge guide and slide the left edge guide over.

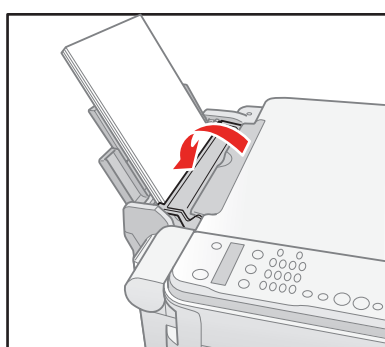


Letter size



4 x 6-inch or 5 x 7-inch

- 6 Flip the feeder guard back.



6 Install Software

Your software works with Windows® 98SE, Me, 2000, and XP, and Macintosh® OS X 10.2.x to OS X 10.4.x.

Windows

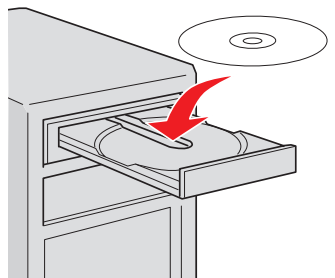
- 1 Make sure the Epson Stylus CX5800F is **NOT CONNECTED** to your computer.



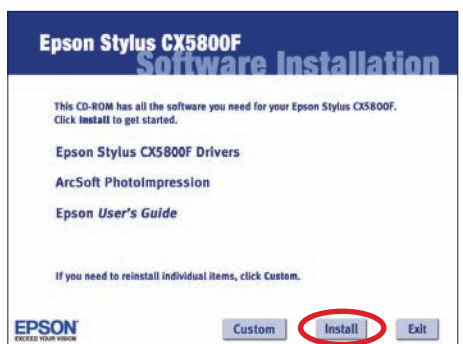
Note: If you see a screen like this, click **Cancel** and disconnect the USB cable. You can't install your software that way.



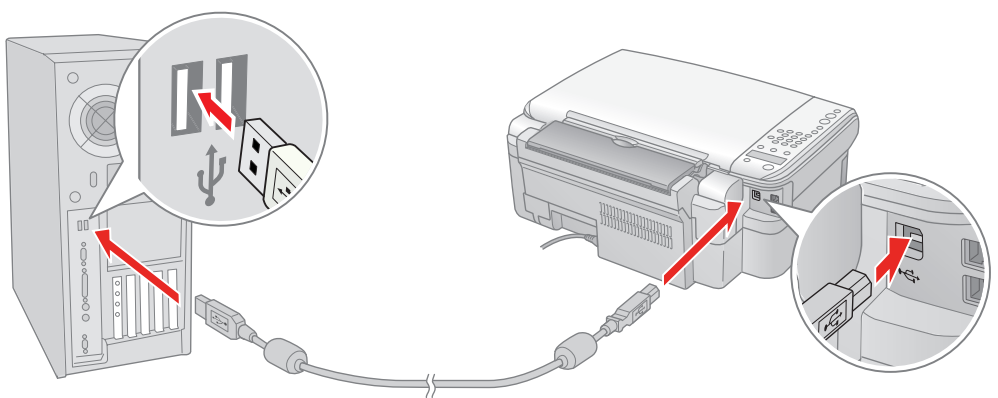
- 2 Insert the Epson Stylus CX5800F CD.



- 3 Click **Install** and follow the on-screen instructions. Software installation takes several minutes.



- 4 When prompted, connect the USB cable. Use any open USB port on your computer.



Note: If installation doesn't continue after a moment, make sure you securely connected and turned on the Epson Stylus CX5800F.

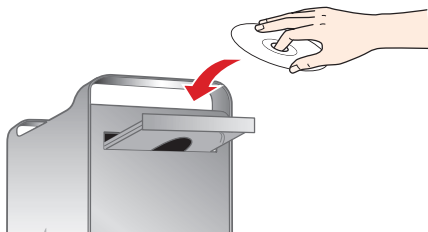
- 5 When you're done, remove the CD and restart your computer.

You're ready to copy, print, and scan! See the *Basics Guide* or your on-screen *User's Guide*.

To connect your Epson Stylus CX5800F to a phone line for faxing, see "Connect Phone Line" to the right.

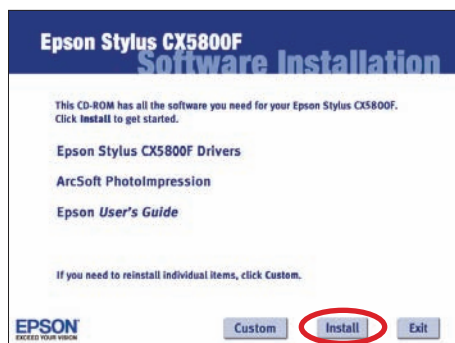
Macintosh

- 1 Insert the Epson Stylus CX5800F CD.

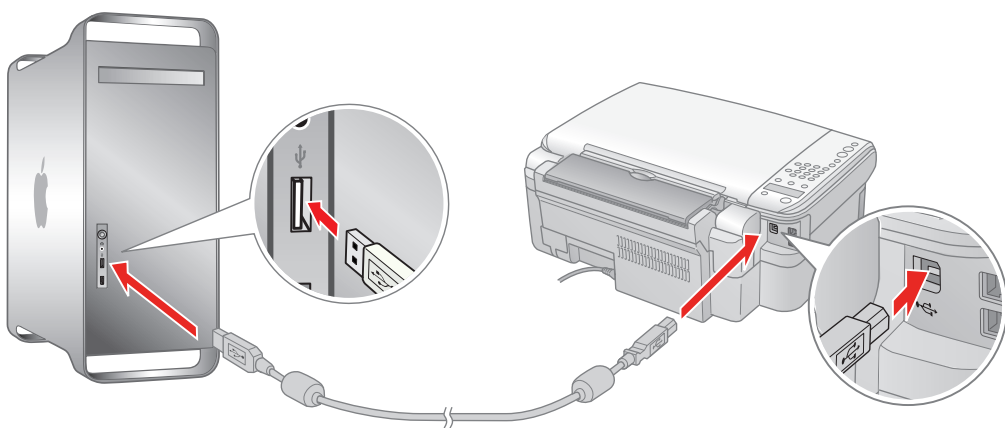


- 2 Open the **Epson** CD-ROM desktop icon and double-click the **EPSON Epson** icon.

- 3 Click **Install** and follow the on-screen instructions. Software installation takes several minutes. If necessary, close any open windows on your screen to return to the installer.

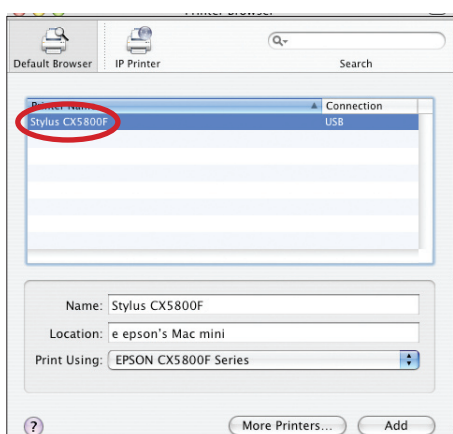


- 4 Connect the USB cable. Use any open USB port on your computer.

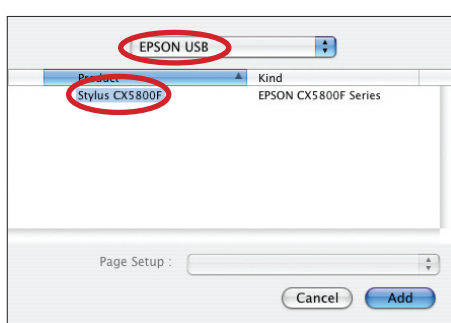


- 5 Remove the CD and restart your Macintosh.
- 6 Open the **Applications > Utilities** folder and select the **Printer Setup Utility** (OS X 10.3.x to 10.4.x) or **Print Center** (OS X 10.2.x).
- 7 Click the **Add** button.
- 8 In OS X 10.4.x, select **Stylus CX5800F**.

In OS X 10.2.x to 10.3.x, select **EPSON USB** at the top and **Stylus CX5800F** below.



Mac® OS X 10.4.x



Mac OS X 10.2.x to 10.3.x

- 9 Click **Add**.
- 10 Quit the Printer Setup Utility or Print Center.

You're ready to copy, print, and scan! See the *Basics Guide* or your on-screen *User's Guide*.

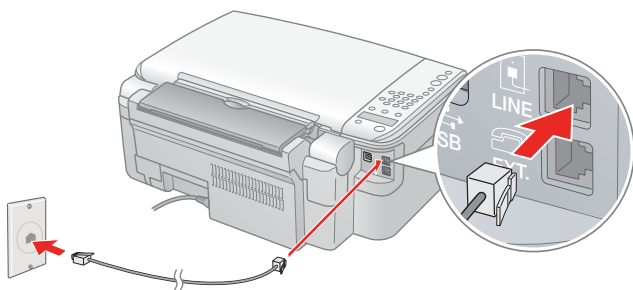
To connect your Epson Stylus CX5800F to a phone line for faxing, see the next section.

7 Connect Phone Line

If you are going to connect a dedicated phone line to the Epson Stylus CX5800F for faxing, connect it as shown below.

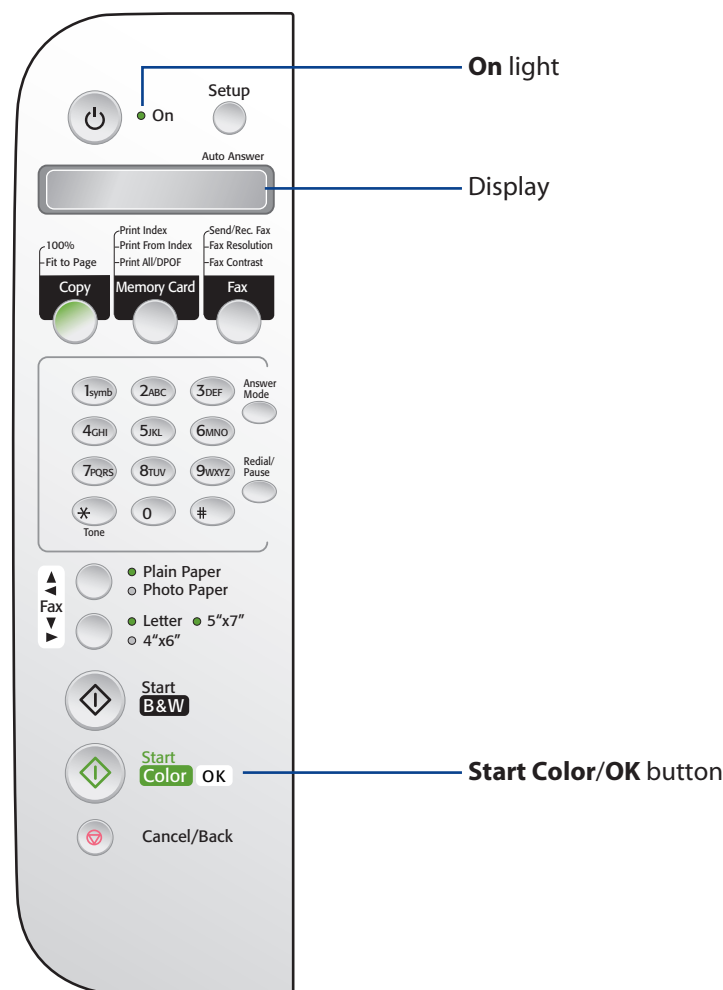
If you want to connect a telephone or answering machine, see the *Basics Guide* for instructions.

Connect the phone cable leading from your telephone wall jack to the **LINE** port on the back of the Epson Stylus CX5800F.



Note: If you connected the Epson Stylus CX5800F to a DSL phone line, you must install a DSL filter to the line or you won't be able to fax. Contact your DSL provider for the necessary filter.

Any Problems?



- If the green **On** light is flashing, just wait until it stops before pressing any control panel buttons.
- If you see a **Paper out** message on the display, reload paper and press the **OK** button to continue.
- If you see a **No ink cartridge** message on the display, an ink cartridge may be installed incorrectly. Press the **OK** button, then open the scanner and push down the cartridges and cartridge cover all the way. See section 4 on the front of this sheet for instructions.
- If you see a **Paper jam** message on the display, press the **OK** button to eject the paper, then pull out the jammed sheets from the sheet feeder or output tray. See the *Basics Guide* for details.

See your *Basics Guide* and on-screen *User's Guide* for more problem-solving information.

Any Questions?

Look here for answers:

Basics Guide

Basic steps for using the Epson Stylus CX5800F.



On-screen User's Guide

Double-click the desktop shortcut for easy access to Epson Stylus CX5800F information.

On-screen help with your software

Select **Help** or **?** when you're using your software.

Epson Technical Support

■ World Wide Web

<http://support.epson.com>

■ Automated Telephone Services

Call (800) 922-8911 with a touch tone telephone. Use Epson SoundAdviceSM Express Code 82710 for the Epson Stylus CX5800F.

■ Speak to a Technical Support Representative

Call (562) 276-4382 (U.S.) or (905) 709-3839 (Canada), 6 AM to 6 PM, Pacific Time, Monday through Friday. Toll or long distance charges may apply.

Software Technical Support

ArcSoft PhotoImpressionTM

(510) 440-9901

Web: www.arcsoft.com

E-mail: support@arcsoft.com

Need Paper and Ink?

For the best prints, copies, and faxes, use genuine Epson ink and paper. Get them from your local store or contact Epson for dealer referral.



T060120

Black

T060220

Cyan

T060320

Magenta

T060420

Yellow



Premium Glossy Photo Paper

Heavyweight paper with a high gloss finish for beautiful photographs in a variety of sizes, with borders or borderless.

Other fine Epson papers are available. See your *Basics Guide* for details.

Epson and Epson Stylus are registered trademarks of Seiko Epson Corporation. DURABrite is a registered trademark and SoundAdvice is a service mark of Epson America, Inc.

General Notice: Other product names used herein are for identification purposes only and may be trademarks of their respective owners. Epson disclaims any and all rights in those marks.

© 2005 Epson America, Inc. 9/05

CPD-20212R1

Printed in XXXXXX XX.XX-XX XXX