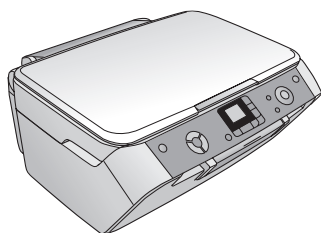


Start Here

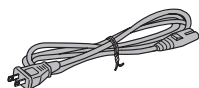
Epson Stylus® CX7800

1 Unpack

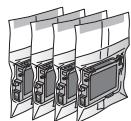
Remove all the tape.



Epson Stylus CX7800



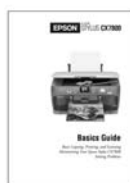
Power cord



4 ink cartridges



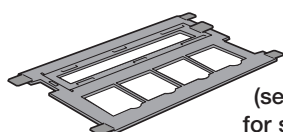
Software CD-ROM



Basics Guide



Photo Projects
Made Easy

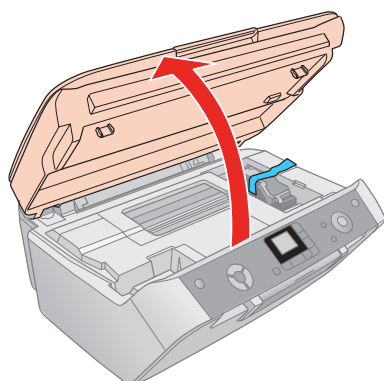


Film holder
(see the *Basics Guide*
for storage instructions)

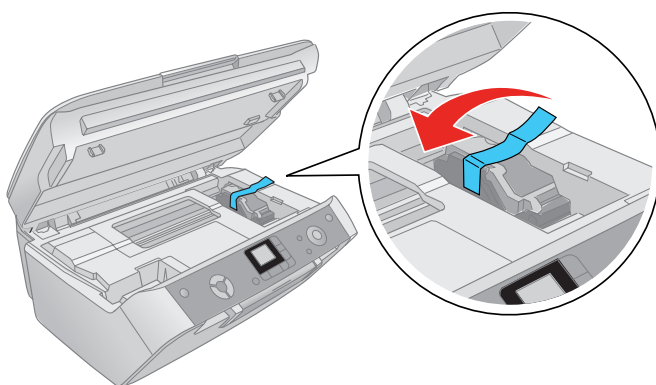
If any of these parts are missing, contact Epson® as described on the back of this sheet.

2 Unlock the Printer

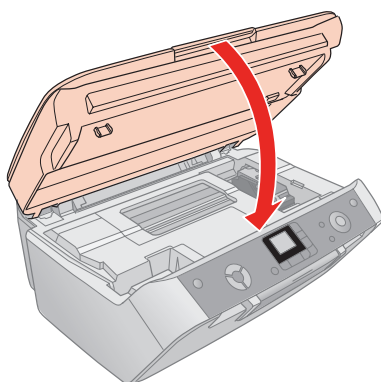
1 Lift up the scanner.



2 Remove the tape from the ink cartridge holder.



3 Close the scanner.

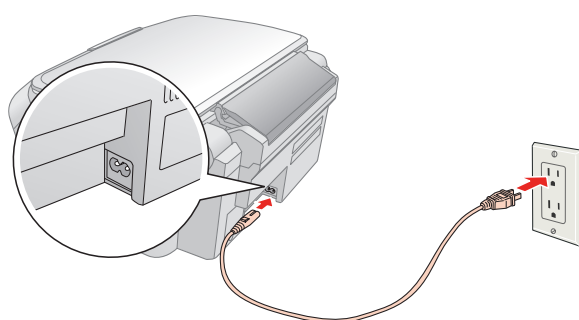


410180300

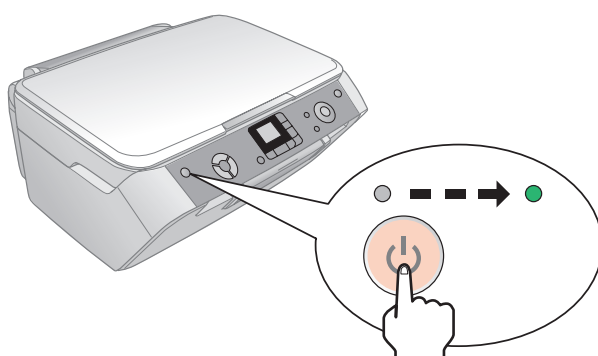
3

Turn On the Epson Stylus CX7800

- 1** Connect the power cable.



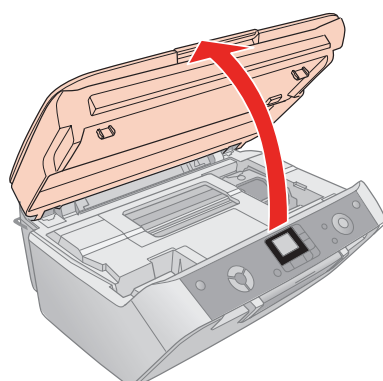
- 2** Press the  On button.

**4**

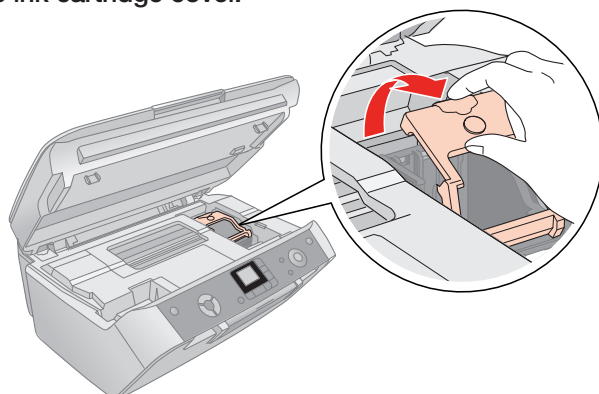
Install Ink Cartridges

Note: Don't load paper before installing the ink cartridges.

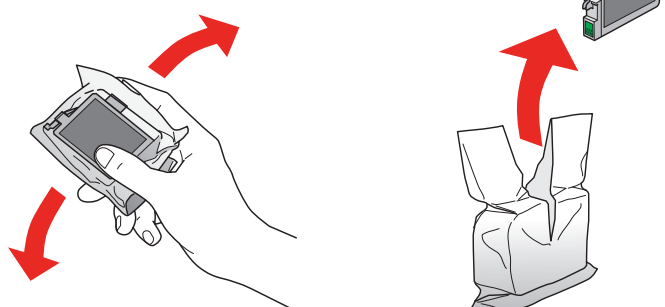
- 1** Lift up the scanner.



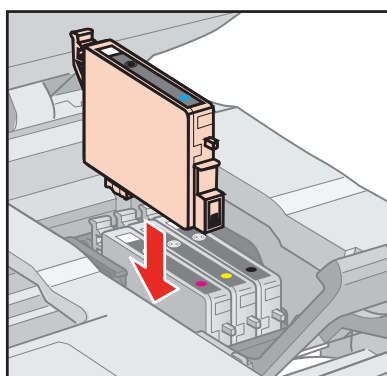
- 2** Open the ink cartridge cover.



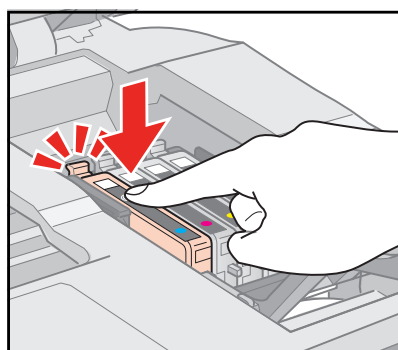
- 3** Shake the ink cartridges, then unpack them.



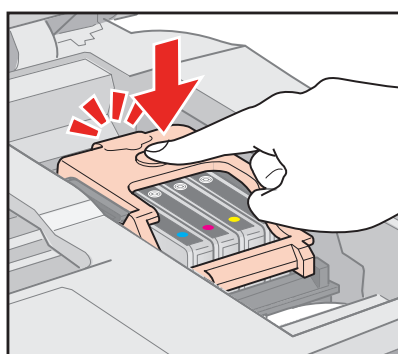
- 4** Insert the cartridges in the holder for each color.



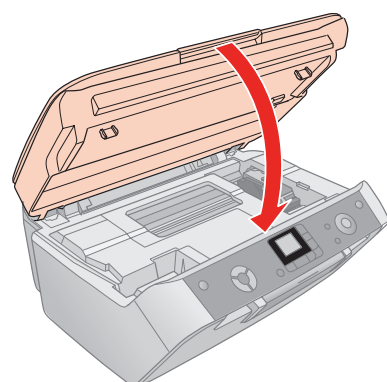
- 5** Press the cartridges down until they click.




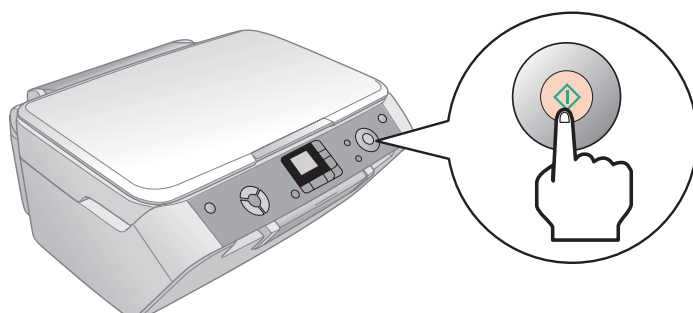
- 6** Close the ink cartridge cover and press it down until it clicks.



- 7** Close the scanner.



- 8** Press the  **Start** button to charge ink. Charging takes about 2 minutes.

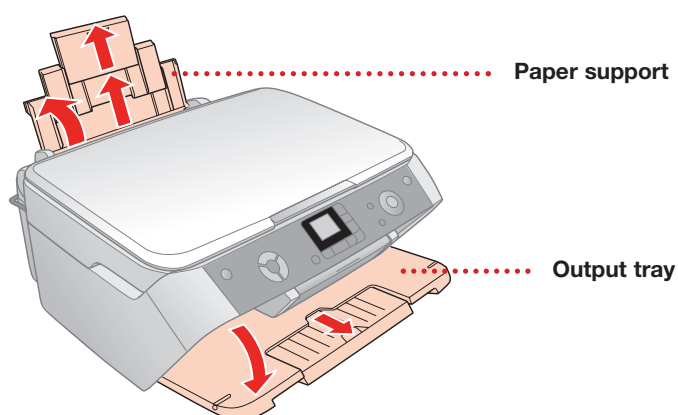


Caution: Don't turn off the Epson Stylus CX7800 while the  **On** light is flashing or you'll waste ink.

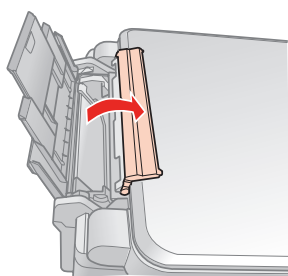
5

Load Paper

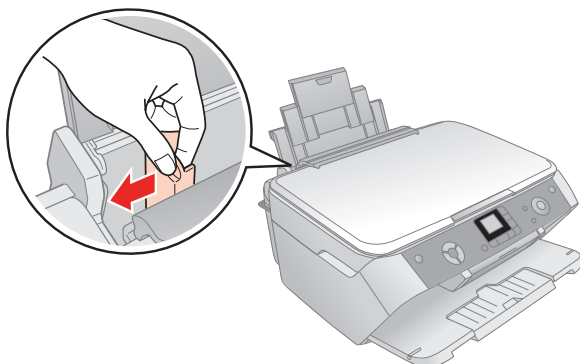
- 1 Open the paper support and pull up its extensions.
- 2 Open the output tray and pull out its extension.



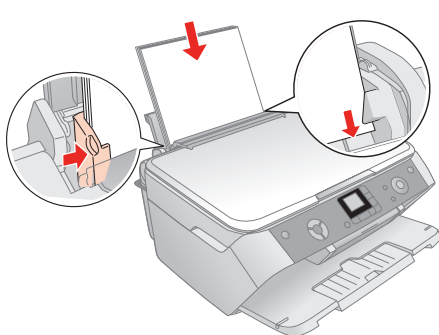
- 3 Flip the feeder guard forward.



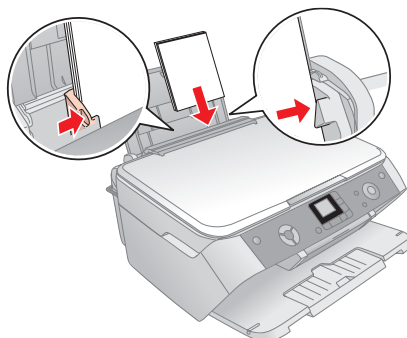
- 4 Slide the edge guide left.



- 5 Load paper against the right edge guide and slide the left edge guide over.

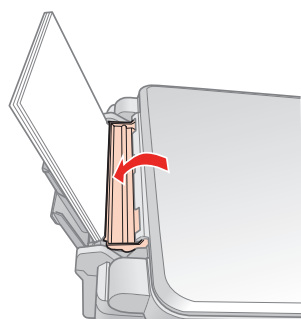


Letter

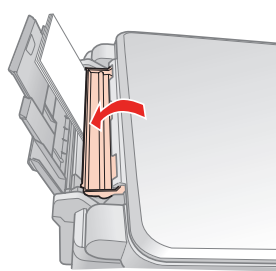


4 x 6-inch or 5 x 7-inch

- 6 Flip the feeder guard back.



Letter



4 x 6-inch or 5 x 7-inch



6

Install Software

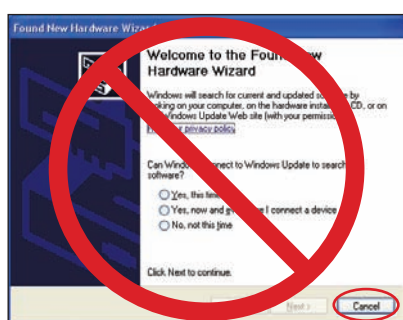
Your software works with Windows® 98SE, Me, 2000, and XP, and Macintosh® OS X 10.2.x or higher.

Windows

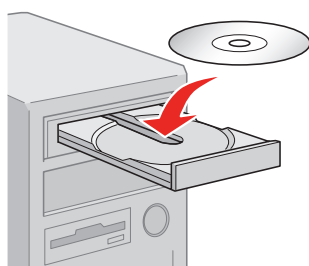
- 1 Make sure the Epson Stylus CX7800 is **NOT CONNECTED** to your computer.



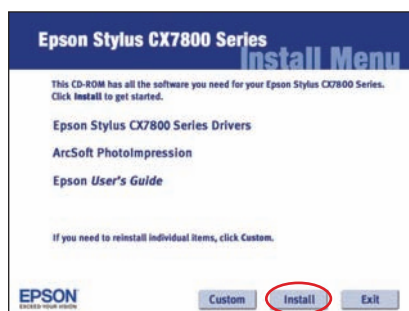
Note: If you see a screen like this, click **Cancel** and disconnect the USB cable. You can't install your software that way.



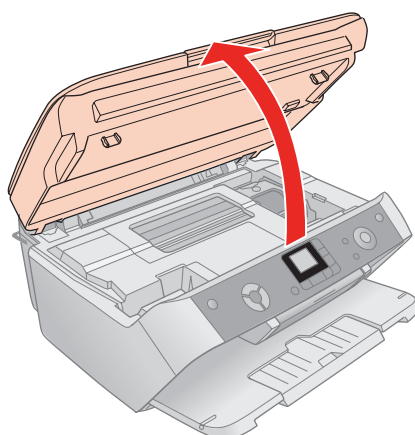
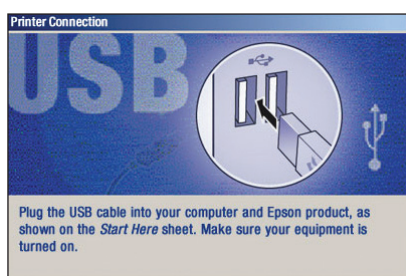
- 2 Insert the Epson Stylus CX7800 Software CD.



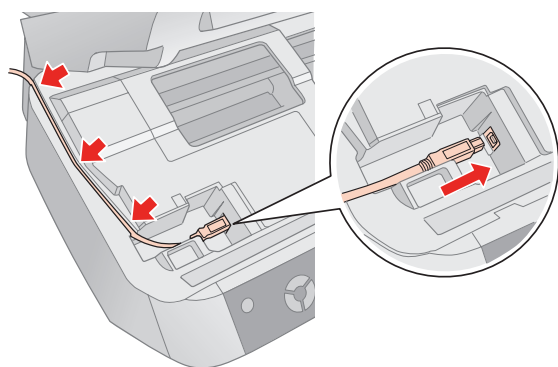
- 3 Click **Install** and follow the on-screen instructions. Software installation takes several minutes.



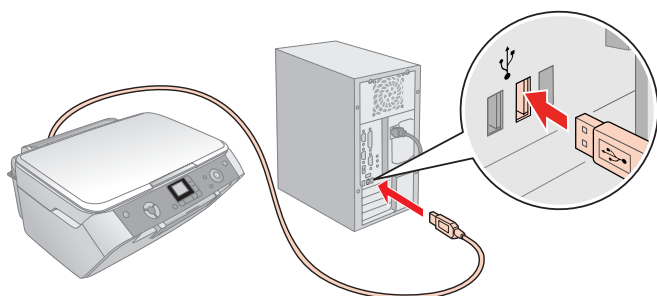
- 4 When you see this screen, make sure your Epson Stylus CX7800 is turned on, then lift up the scanner.



- 5** Connect the USB cable, then route the cable in the slot as shown.



- 6** Connect the USB cable to any open USB port on your computer.




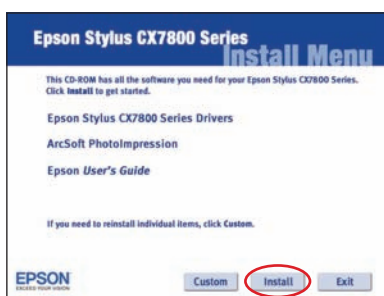
Note: If installation doesn't continue after a moment, make sure you securely connected and turned on the Epson Stylus CX7800.

- 7** When you're done, remove the CD and restart your computer.

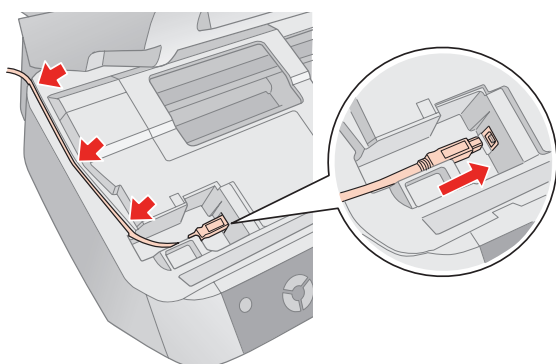
You're ready to copy, print, and scan! See "Any Questions?" to the right to find out how.

Macintosh

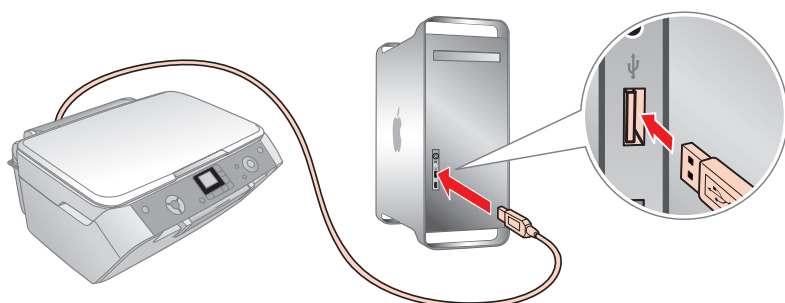
- 1** Insert the Epson Stylus CX7800 Software CD.
- 2** Open the Epson CD-ROM desktop icon, then double-click the  **Epson** icon.
- 3** Click **Install** and follow the on-screen instructions. Software installation takes several minutes. If necessary, close any open windows on your screen to return to the installer.



- 4** Connect the USB cable, then route the cable in the slot as shown.

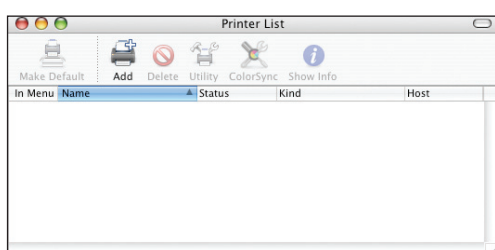


- 5** Connect the USB cable to any open USB port on your computer.



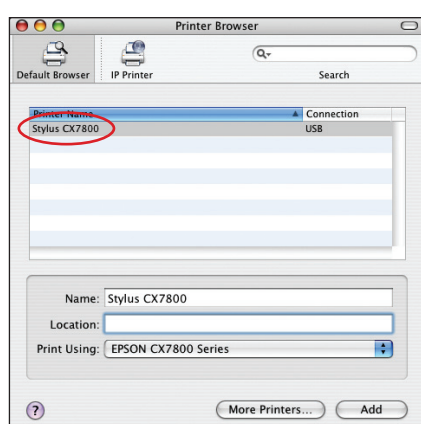
- 6** Remove the CD and restart your Macintosh.

- 7** Open the **Applications > Utilities** folder and access the **Printer Setup Utility** or **Print Center**.

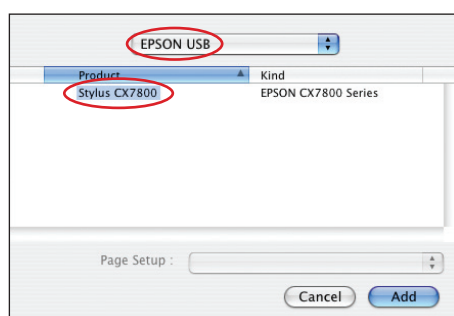


- 8** Click the **Add** button.

- 9** In Mac OS® X 10.4.x, select **Stylus CX7800**.



In Mac OS X 10.2.x to 10.3.x, select **EPSON USB** at the top and **Stylus CX7800** below.



- 10** Click the **Add** button.

- 11** Quit the **Printer Setup Utility** or **Print Center**.

You're ready to copy, print, and scan! See "Any Questions?" to the right to find out how.

Any Problems?

If you are having a problem with your Epson Stylus CX7800, check the message on the control panel. Try turning it off and then back on to clear the error. If your problem is listed here, try these suggestions. For more information see your *Basics Guide*, software Help, or on-screen *User's Guide*.

The Found New Hardware Wizard appears on your screen.

Click **Cancel** and disconnect the CX7800. Install software as described on this sheet.

You see an error message when you try to print or scan.

Make sure your CX7800 is connected to your computer, plugged into a power source, and turned on.

The CX7800 doesn't work.

Make sure the ink cartridges are pushed all the way in and the covers are closed.

Make sure your CX7800 software is installed correctly.

The CX7800 makes noise after you turn it on.

Make sure you removed the tape securing the ink cartridge holder, as shown on the front of this sheet. After removing the tape, turn off the CX7800, wait a moment, then turn it back on.

It is normal for the CX7800 to make some noise after you turn it on.

Any Questions?

Here's where to look for answers:

Photo Projects Made Easy

Basic steps on copying and printing without a computer.

Epson Stylus CX7800 Basics Guide

Basic steps for using the Epson Stylus CX7800.

On-screen User's Guide

Double-click the desktop shortcut for easy access to Epson Stylus CX7800 information.

On-screen help with your software

Click the **Help** or **?** button when you're using your software.

Epson Technical Support (Epson Stylus CX7800 and Epson Scan)

- **World Wide Web**
<http://support.epson.com>
- **Automated Telephone Services**
Call (800) 922-8911 with a touch tone telephone. Use Epson SoundAdviceSM Express Code 82715 for the Epson Stylus CX7800.
- **To speak to a Technical Support Representative**
Call (562) 276-4382 (U.S.) or (905) 709-3839 (Canada), 6 AM to 6 PM, Pacific Time, Monday through Friday. Toll or long distance charges may apply.

Software Technical Support

ArcSoft PhotoImpressionTM

(510) 440-9901

Web: www.arcsoft.com

E-mail: support@arcsoft.com

Need Paper and Ink?

For the best prints and copies, use genuine Epson ink and paper. You can purchase them from an authorized Epson reseller. To find the nearest reseller, please call 800-GO-EPSON (800-463-7766). To purchase online, visit www.epsonstore.com (U.S. sales only). In Canada, please call (800) 463-7766 for reseller referral.



T060120

Black ink

T060220

Cyan ink

T060320

Magenta ink

T060420

Yellow ink



Premium Bright White Paper

Ultra-smooth white paper perfect for everyday use.



Premium Glossy Photo Paper

Heavyweight paper with a high gloss finish for beautiful photographs in a variety of sizes, with borders or borderless.



Matte Paper Heavyweight

Fade-resistant, water-resistant paper with a flat matte finish for printing photos and graphics.

Other fine Epson papers are available, see your *Basics Guide* for details.

Epson and Epson Stylus are registered trademarks of Seiko Epson Corporation. DURABrite is a registered trademark and SoundAdvice is a service mark of Epson America, Inc.

General Notice: Other product names used herein are for identification purposes only and may be trademarks of their respective owners. Epson disclaims any and all rights in those marks.

© 2005 Epson America, Inc. 7/05

Printed in XXXXXX XX.XX-XX XXX

CPD-20264