

# EPSON PRODUCT SUPPORT BULLETIN

**Date:** 04/07/2003  
**PSB #:** PSB.2003.04.004

**Reference:** N/A  
**Product(s):** EPSON Scanner Options

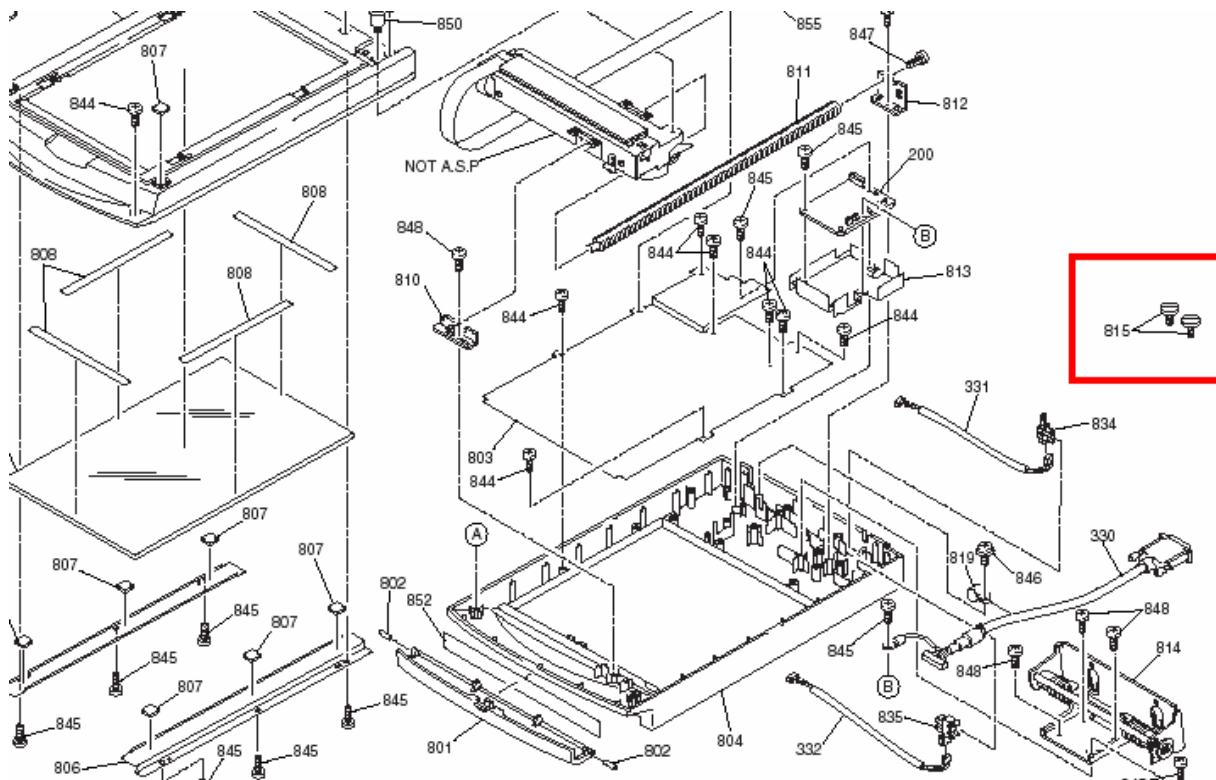
**Subject:** Part numbers for transparency adapter mounting screws (thumbscrews)

**Originator:** TC  
**Authorization:** *Kas*  
**Total Pages:** 1

This bulletin was created to inform you of the part numbers used for the thumbscrews (mounting screws) that secure the transparency units to the scanner.

## **Reason:**

Epson Customers may need to replace these thumbscrews because they are missing or misplaced. Epson Dealers and Customer Care Centers may call Technical Support for assistance in locating the reference or part number for the thumbscrews. The location of the thumbscrews on the Product diagram is on the right hand side, and is often overlooked (See red box below)



The correct part and reference numbers for the Expression 1600/1680 Transparency Unit (B813182) lock-down thumbscrews are respectively: 1012588 and 815. The Parts Price List (PPL) description is S. THUMB SCREW M4X10 F/NI, Quantity = 2.

**Note:** The part number is subject to change but the reference number will remain the same.

These screws are used on the following scanners and options: ES-600C/800C/1000C/1200C options (ADF & TPU), and the Expression 636/800/1600/1680 options (ADF & TPU). The part and reference number for Expression 1600/1680 Transparency Unit (B813182) can be used to order replacement thumbscrews for all models and options listed above.