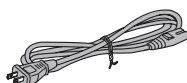
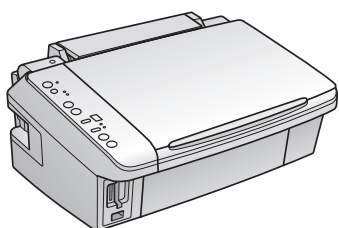


# Start Here

## Epson Stylus® NX200 Series

1

### Unpack



(Included for Canada only)

If anything is missing, contact Epson as described on the back.

**Caution:** Do not open the ink cartridge package until you are ready to install the ink. Cartridges are vacuum packed to maintain reliability.

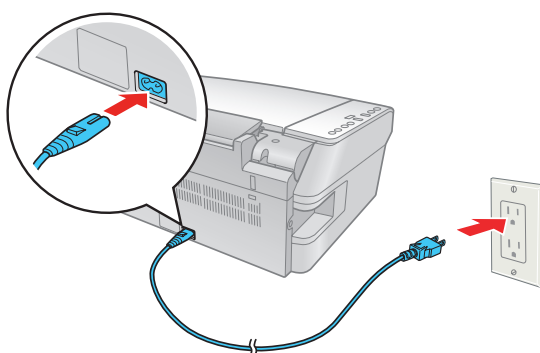
**Canada only:** For French speakers, remove the control panel sticker(s) from the backing sheet and place over the corresponding text on the control panel.

2

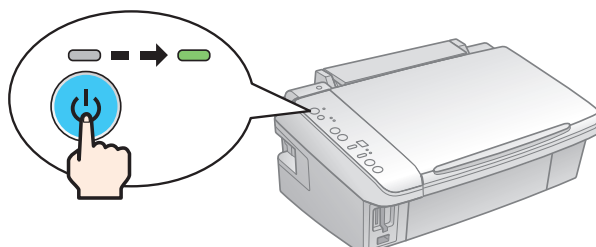
### Turn on the NX200 Series

- 1 Connect the power cable.

**Note:** Do not connect to the computer at this time.



- 2 Press the  **On** button.

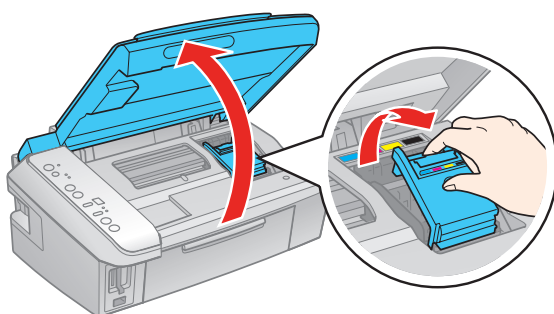


# 3

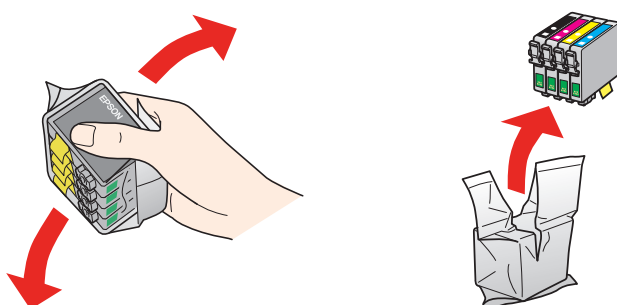
## Install cartridges

**Note:** Do not load paper yet.

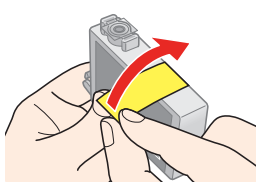
- 1 Lift up the scanner, then open the cartridge cover.



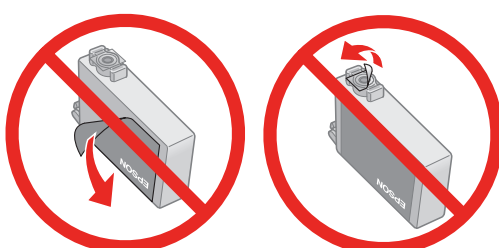
- 2 Shake the ink cartridges, then unpack them.



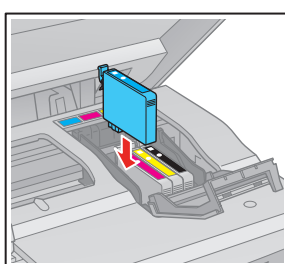
- 3 Remove only the yellow tape from each cartridge.



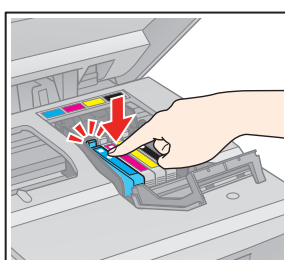
**Caution:** Do not remove any other seals or the cartridge may leak.



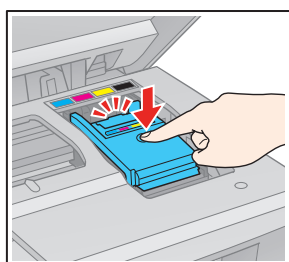
- 4 Insert the cartridges in the holder for each color.



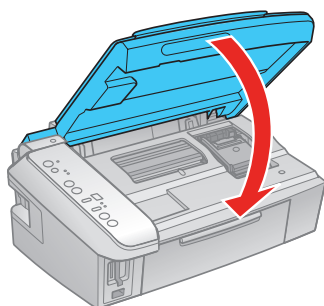
- 5 Press each cartridge down until it clicks.




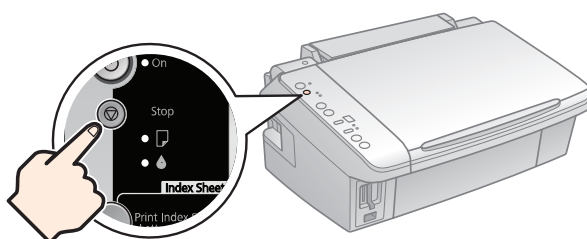
- 6** Close the cartridge cover. Press down until it clicks.



- 7** Lower the scanner.



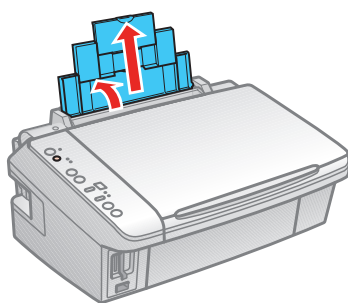
- 8** Press the  Stop button to charge the ink. Charging takes about 2½ minutes.



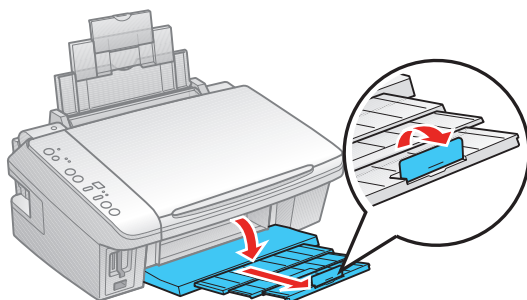
**Caution:** Don't turn off the NX200 Series while it is charging or you'll waste ink.

## 4 Load paper

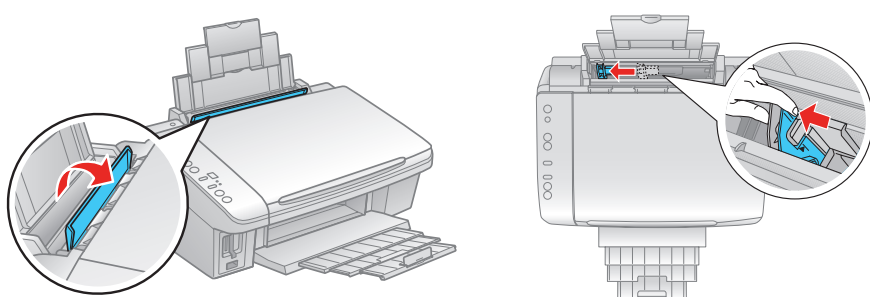
- 1** Open the paper support and pull up the extensions.



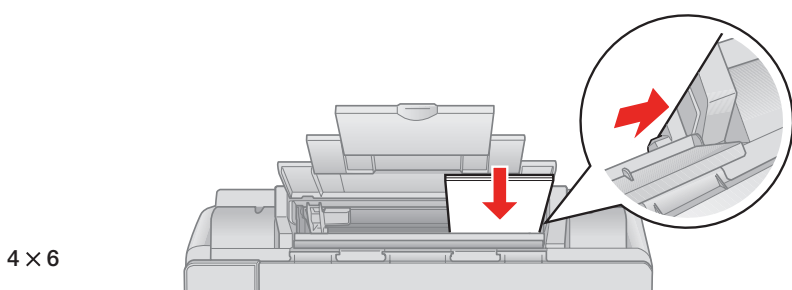
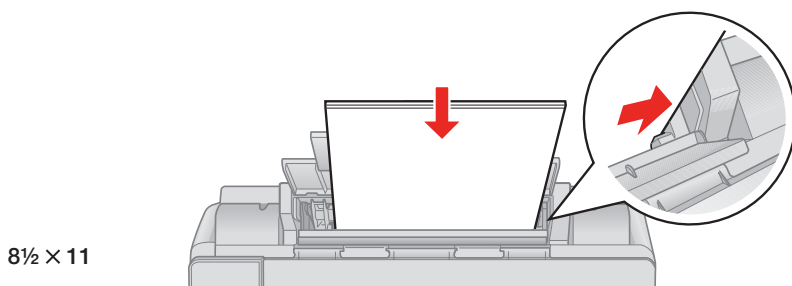
- 2** Open the output tray, pull out the extensions, and raise the stopper.



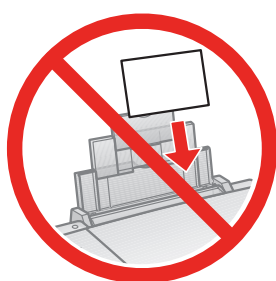
- 3** Flip the feeder guide forward. Then squeeze the edge guide and slide it left.



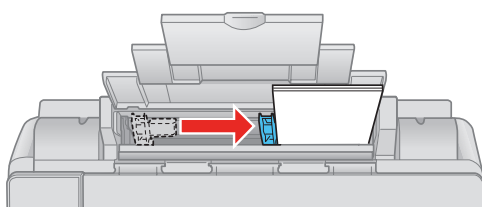
- 4** Load paper against the right edge and underneath the tab, with the printable side face up.



**Note:** Don't load the paper sideways; always load it short edge first.



- 5** Slide the edge guide over.





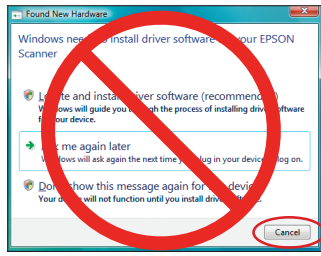
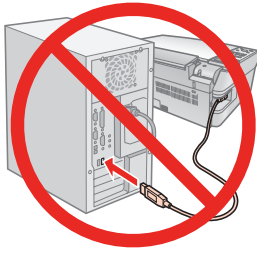
# 5

## Install software

Your software works with Windows® 2000, XP, XP Professional x64 Edition, Windows Vista®, and **Mac OS® X 10.3.9, 10.4.x, and 10.5.x.**

### Windows

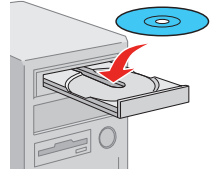
- 1 Make sure the NX200 Series is **NOT CONNECTED** to your computer.



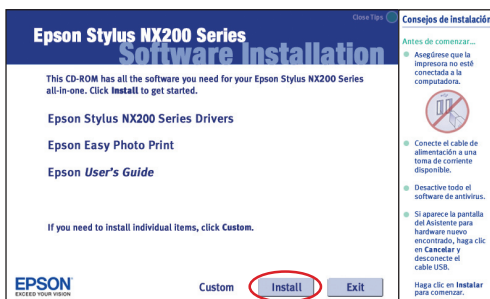
**Note:** If you see a Found New Hardware screen, click **Cancel** and disconnect the USB cable. You can't install your software that way.

- 2 Insert the Epson Stylus NX200 Series CD.

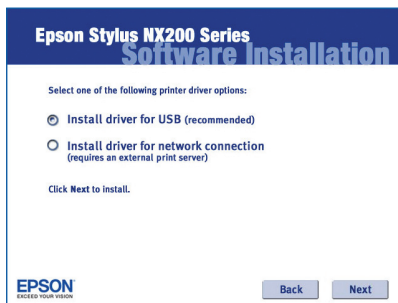
With Windows Vista, if you see the AutoPlay window, click **Run Esetup.exe**. When you see the User Account Control screen, click **Continue**.



- 3 Click **Install** and follow the on-screen instructions.

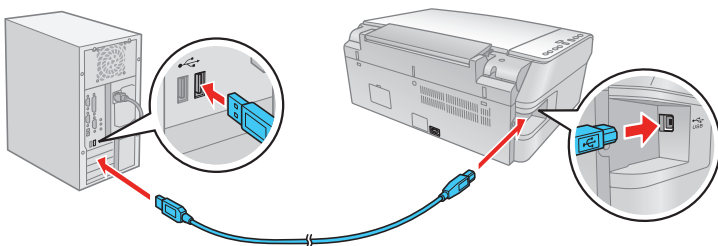


- 4 When you see this screen, click the first option and then click **Next**, unless the NX200 Series is connected to your computer through an external print server.



If you're using an external print server, click the second option, click **Next**, then skip to step 6.

- 5 When prompted, connect the USB cable. Use any open port on your computer.



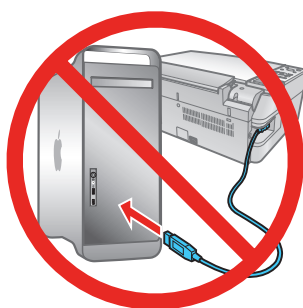
**Note:** If installation doesn't continue after a moment, make sure you securely connected and turned on the NX200 Series.

- 6 When you're done, remove the CD.

You're ready to copy, print, and scan! See the *Quick Guide* or your on-screen *User's Guide* for instructions.

# Macintosh®

- 1 Make sure the NX200 Series is **NOT CONNECTED** to your computer.



- 2 Insert the Epson Stylus NX200 Series CD.

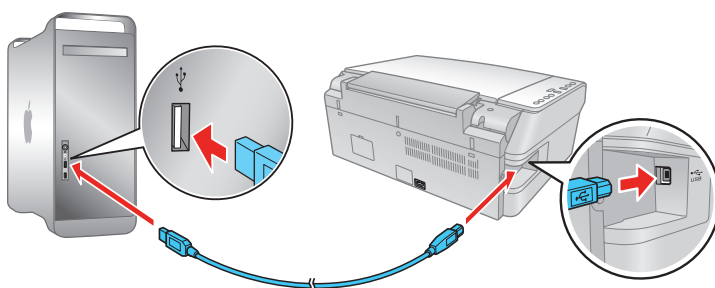


- 3 Double-click the  **Epson** icon.

- 4 Click **Install** and follow the on-screen instructions.



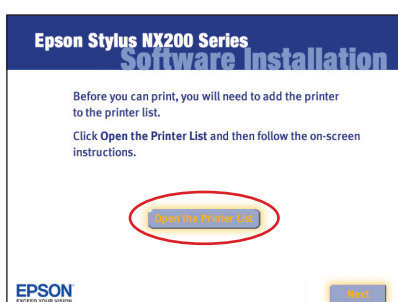
- 5 When prompted, connect the USB cable. Use any open USB port on your Macintosh. Make sure the NX200 Series is securely connected and turned on.



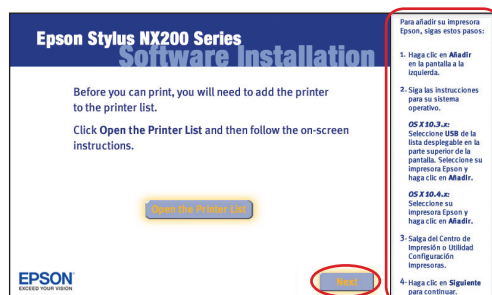
- 6 Mac OS X 10.5 users: skip to step 10.

Other users: continue with step 7.

- 7 When you see this screen, click **Open the Printer List**.



- 8 Follow the steps on the right side of the screen to add the NX200 Series.

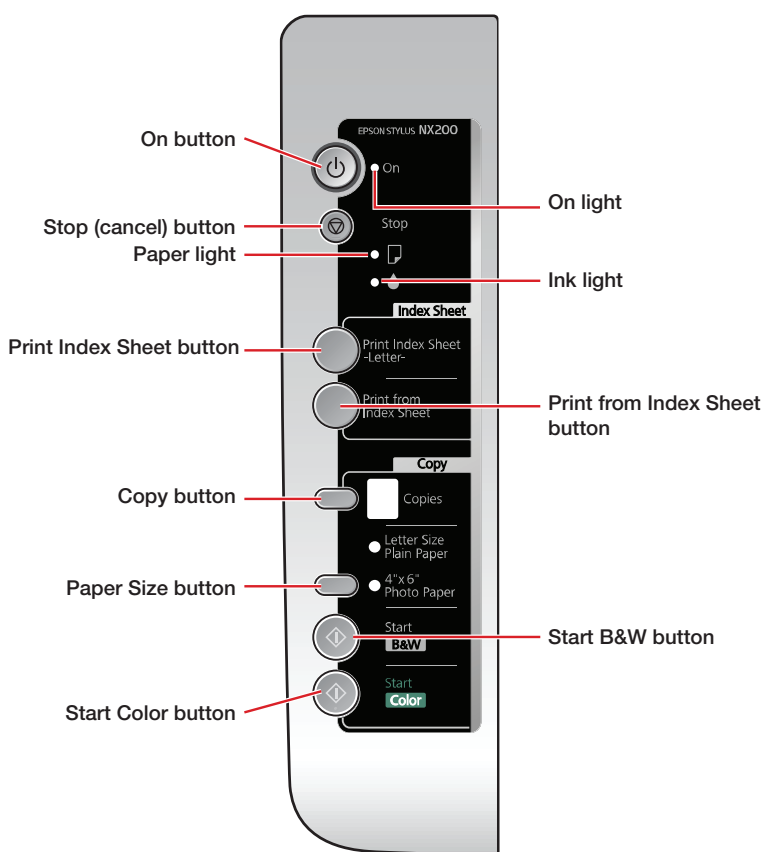


- 9 Click **Next** again, if necessary.

- 10 When you're done, eject the CD.

You're ready to copy, print, and scan! See the *Quick Guide* or your on-screen *User's Guide* for instructions.

# Control panel



## Any questions?

### Quick Guide

Basic instructions for copying, printing, and scanning.



### On-screen Epson Information Center

Click the desktop shortcut for easy access to the NX200 Series *User's Guide*, FAQs, online troubleshooting advice, and software downloads. You can also purchase paper and ink.



### On-screen help with your software

Select **Help** or **?** when you're using your software.

### Epson Technical Support

#### Internet Support

Visit Epson's support website at [epson.com/support](http://epson.com/support) and select your product for solutions to common problems. You can download drivers and documentation, get FAQs and troubleshooting advice, or e-mail Epson with your questions.

#### Speak to a Support Representative

Call (562) 276-4382 (U.S.) or (905) 709-3839 (Canada), 6 AM to 6 PM, Pacific Time, Monday through Friday. Days and hours of support are subject to change without notice. Toll or long distance charges may apply.

# Need paper and ink?

Want great results? Simple. Use genuine Epson paper and ink. For the right supplies at the right time, you can purchase them at Epson Supplies Central<sup>SM</sup> at [www.epson.com/ink3](http://www.epson.com/ink3) (U.S. sales) or [www.epson.ca](http://www.epson.ca) (Canadian sales). You can also purchase supplies from an Epson authorized reseller. To find the nearest one, call 800-GO-EPSON (800-463-7766).



## Epson Photo Paper Glossy

Bright, instant-drying paper for great looking photos and projects.

See the entire line of Epson photo papers at Epson Supplies Central.

# Genuine Epson inks

Look for the numbers below to find your cartridges. It's as easy as remembering your number!



**69** or **88** Black

**69** or **88** Magenta

**69** or **88** Cyan

**69** or **88** Yellow


Epson and Epson Stylus are registered trademarks and Epson Exceed Your Vision is a registered logomark of Seiko Epson Corporation. DURABrite is a registered trademark of Epson America, Inc.

General Notice: All other trademarks are the property of their respective owners. Epson disclaims any and all rights in those marks.


This information is subject to change without notice.

© Epson America, Inc. 2009, 3/09 CPD-25335R1

Cut out the card to the right and keep it with you when purchasing replacement ink cartridges.



## Epson NX200 Series Ink Cartridges



**69** or **88** Black

**69** or **88** Magenta

**69** or **88** Cyan

**69** or **88** Yellow