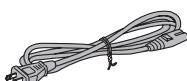
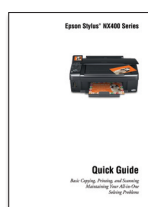
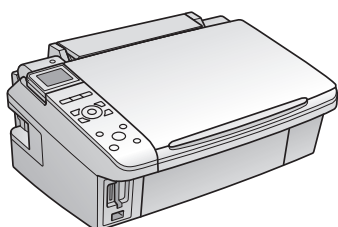


# Start Here

## Epson Stylus® NX400 Series

# 1

### Unpack



(Included for Canada only)

If anything is missing, contact Epson as described on the back.

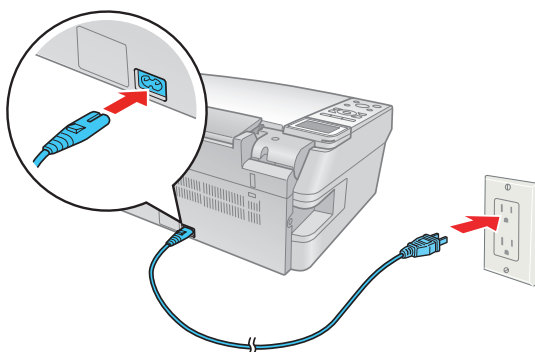
**Caution:** Do not open the ink cartridge package until you are ready to install the ink. Cartridges are vacuum packed to maintain reliability.

**Canada only:** For French speakers, remove stickers from the backing sheet and place over corresponding text on the control panel.


# 2

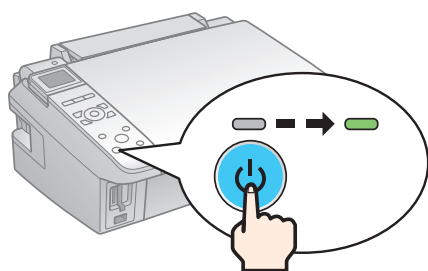
### Turn on the NX400 Series

- 1 Connect the power cable.



**Note:** Do not connect to the computer at this time.

- 2 Press the  On button.



\*411385501\*

**EPSON®**  
EXCEED YOUR VISION

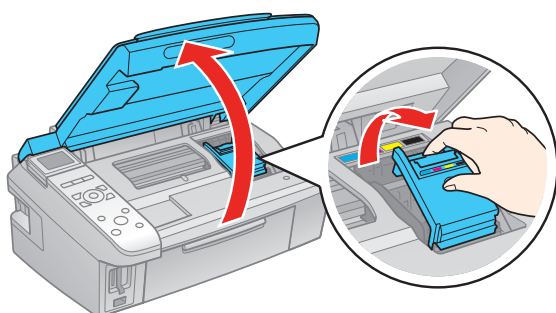
# 3

## Install cartridges

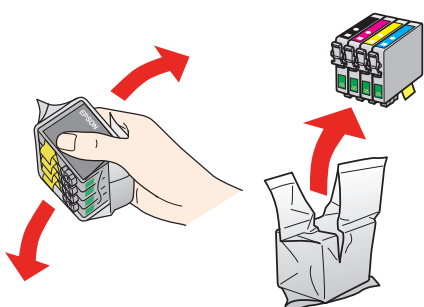
**Note:** Do not load paper yet.

**1** Lift up the scanner.

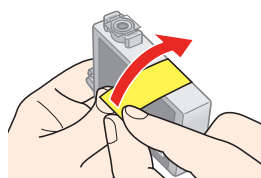
**2** Open the cartridge cover.



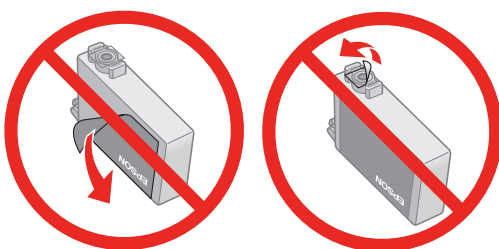
**3** Shake the ink cartridges gently 4 or 5 times, then unpack them.



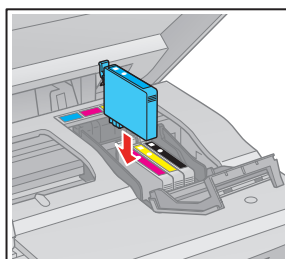
**4** Remove only the yellow tape from each cartridge.



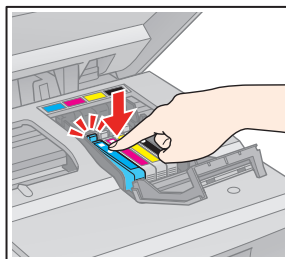
**Caution:** Do not remove any other seals or the cartridge may leak.



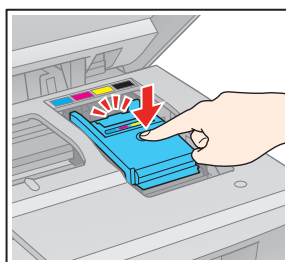
**5** Insert the cartridges in the holder for each color.



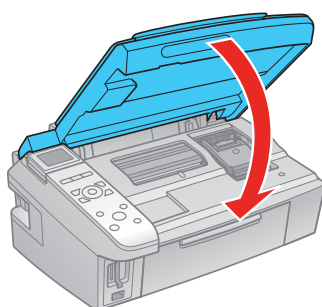
**6** Press each cartridge down until it clicks.



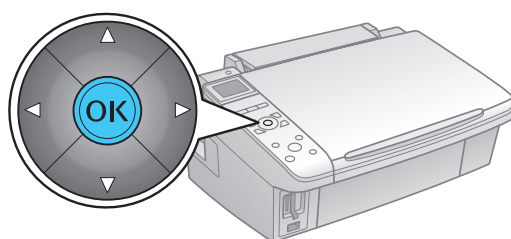
**7** Close the cartridge cover. Press down until it clicks.



**8** Lower the scanner.



- 9** Press the **OK** button to charge the ink. Charging takes about 2½ minutes.

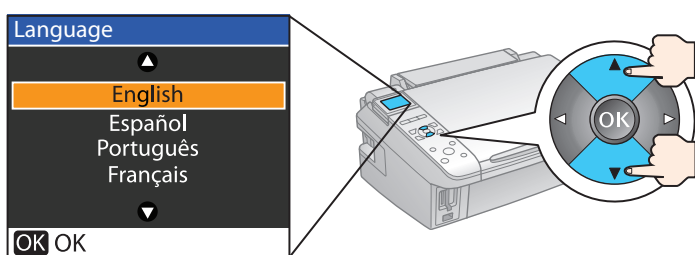


**Caution:** Don't turn off the NX400 Series while it is charging or you'll waste ink.

## 4 Change your language

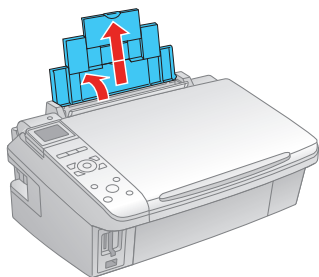
You can change the language that appears on your LCD display screen from English to French, Spanish, or Portuguese.

- 1** Press **Setup**.
- 2** Press **►** to select **Maintenance**, and press **OK**.
- 3** Press **▼** to select **Language**, and press **OK**.
- 4** Press **▲** or **▼** to select your language, and press **OK**.

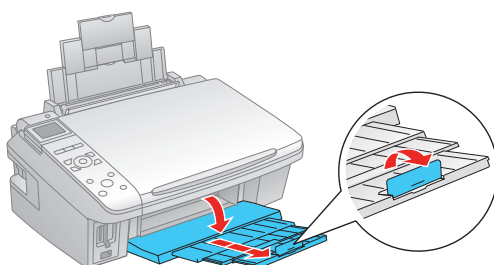


## 5 Load paper

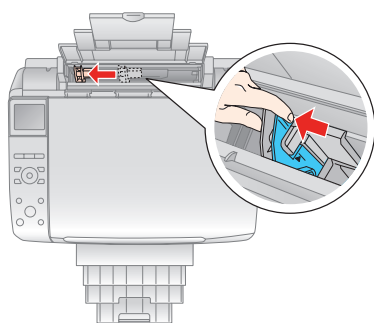
- 1** Open the paper support and pull up the extensions.



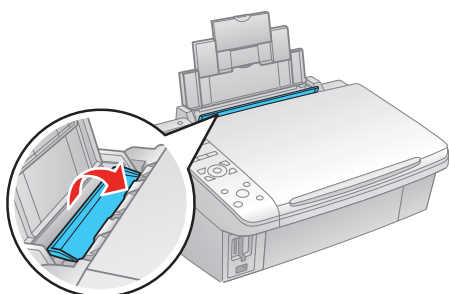
- 2** Open the output tray, pull out the extensions, and raise the stopper.



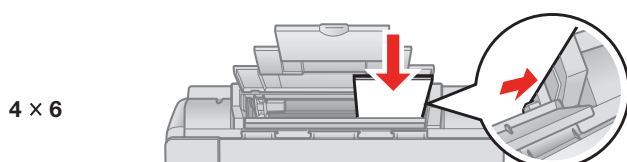
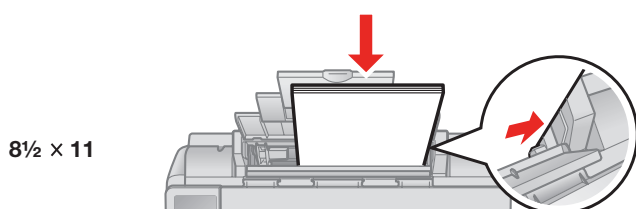
- 3** Squeeze the edge guide and slide it left.



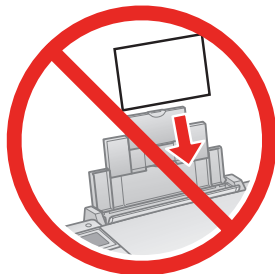
**Tip:** If the feeder guard is in the way, flip it forward.



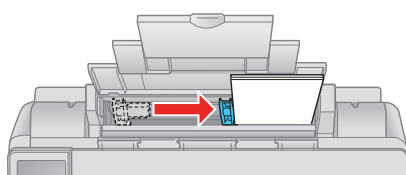
- 4** Load paper against the right edge and underneath the tab.



**Note:** Don't load the paper sideways.



- 5** Slide the edge guide over.



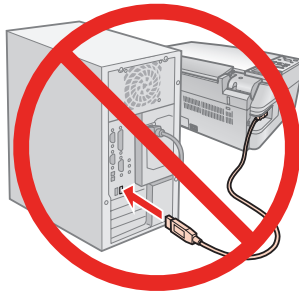
# 6

## Install software

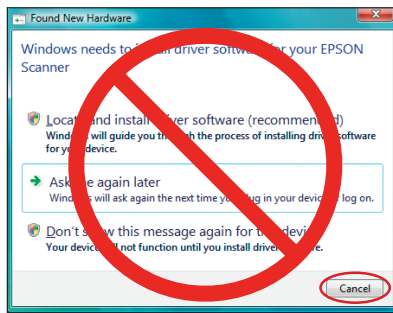
Your software works with Windows® 2000, XP, XP Professional x64 Edition, Windows Vista® and **Mac OS® X 10.3.9, 10.4.x, and 10.5.x.**

### Windows

- 1 Make sure the NX400 Series is **NOT CONNECTED** to your computer.

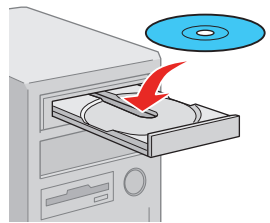


**Note:** If you see a Found New Hardware screen, click **Cancel** and disconnect the USB cable.



- 2 Insert the NX400 Series CD.

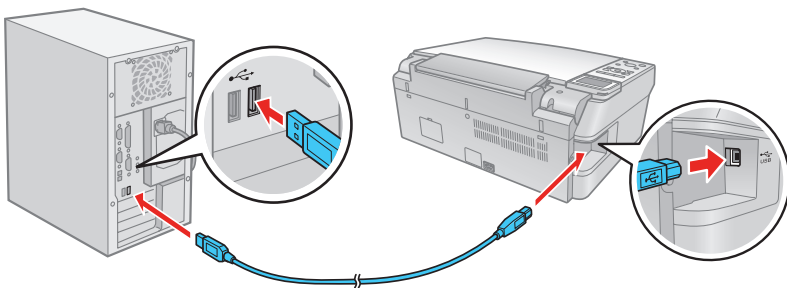
With Windows Vista, if you see the AutoPlay window, click **Run Esetup.exe**. When you see the User Account Control screen, click **Continue**.



- 3 Click **Install** and follow the on-screen instructions.



- 4 When prompted, connect the USB cable. Use any open port on your computer.



**Note:** If installation doesn't continue after a moment, make sure you securely connected and turned on the NX400 Series.

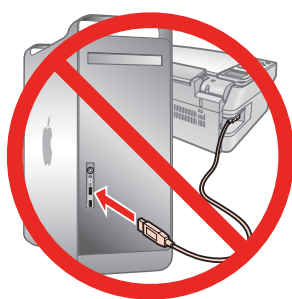
- 5 Follow the on-screen instructions to install the rest of the software and register your NX400 Series.

- 6 When you're done, remove the CD.

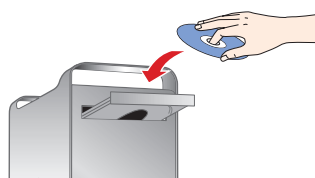
You're ready to copy, print, and scan! See the *Quick Guide* or your on-screen *User's Guide* for instructions.

# Macintosh

- 1 Make sure the NX400 Series is **NOT CONNECTED** to your computer.

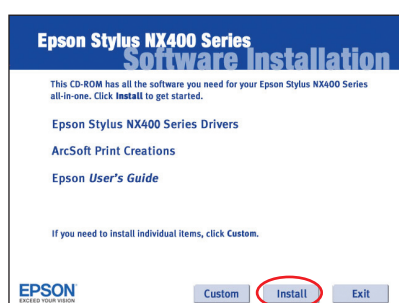


- 2 Insert the NX400 Series CD.

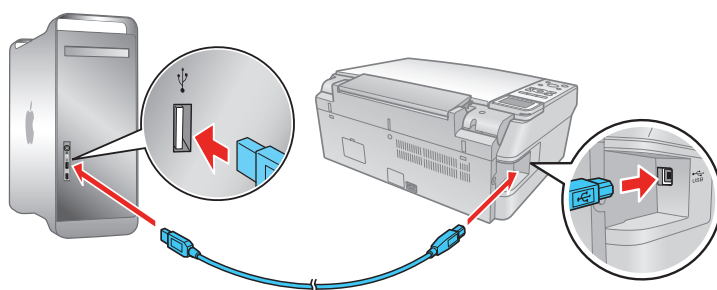


- 3 Double-click the **EPSON** Epson icon.

- 4 Click **Install** and follow the on-screen instructions.



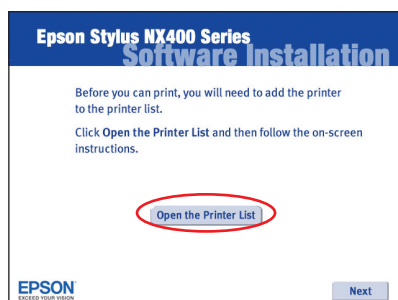
- 5 When prompted, connect the USB cable. Use any open USB port on your Macintosh. Make sure the NX400 Series is securely connected and turned on.



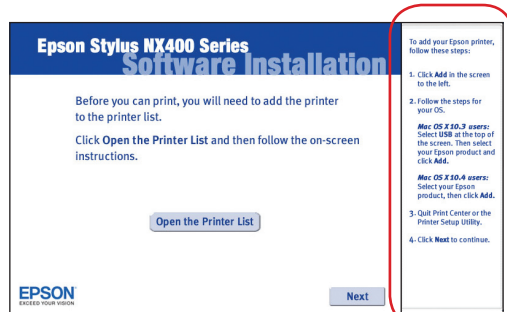
- 6 Mac OS X 10.5 users: skip to step 10.

Other users: continue with step 6.

- 7 When you see this screen, click **Open the Printer List**.



- 8 Follow the steps on the right of the screen to add the NX400 Series.

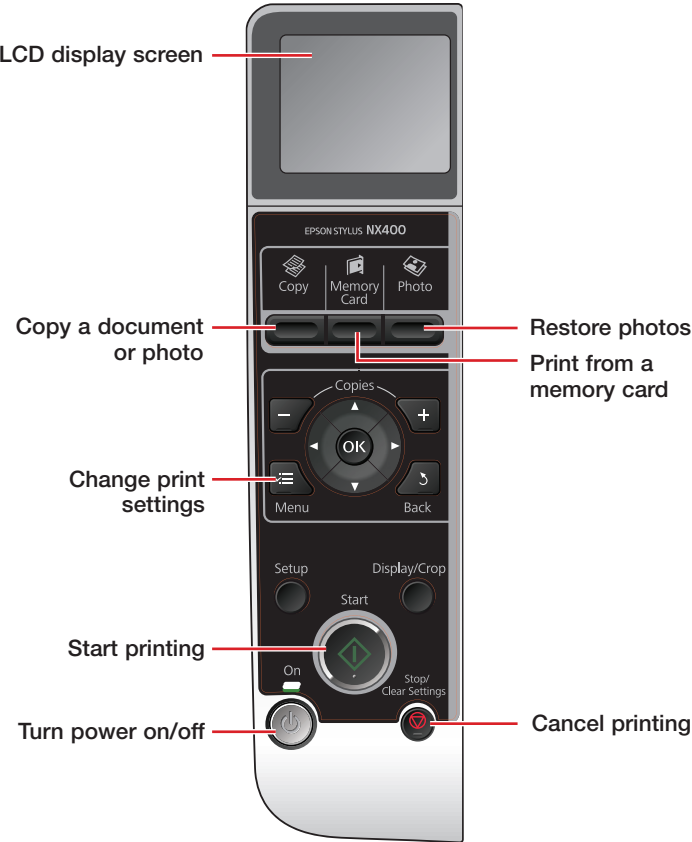


- 9 Click **Next** again, if necessary.

- 10 Follow the on-screen instructions to install the rest of the software and register your NX400 Series.
- 11 When you're done, eject the CD.

You're ready to copy, print, and scan! See the *Quick Guide* or your on-screen *User's Guide* for instructions.

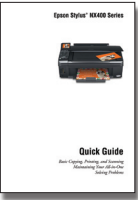
## Control panel



## Any questions?

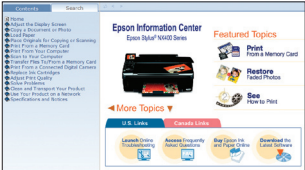
### Quick Guide

Basic instructions for copying, printing, and scanning.



### On-screen Epson Information Center

Click the desktop shortcut for easy access to the NX400 Series *User's Guide*, FAQs, online troubleshooting advice, and software downloads. You can also purchase paper and ink.



### On-screen help with your software

Select **Help** or **?** when you're using your software.

### Epson Technical Support

#### Internet Support

Visit Epson's support website at [epson.com/support](http://epson.com/support) and select your product for solutions to common problems. You can download drivers and documentation, get FAQs and troubleshooting advice, or e-mail Epson with your questions.

#### Speak to a Support Representative

Call (562) 276-4382 (U.S.) or (905) 709-3839 (Canada), 6 AM to 6 PM, Pacific Time, Monday through Friday. Days and hours of support are subject to change without notice. Toll or long distance charges may apply.

### Software Technical Support

ArcSoft Print Creations™

Web: [www.arcsoft.com/support](http://www.arcsoft.com/support)

# Need paper and ink?

Want great results? Simple. Use genuine Epson paper and ink. For the right supplies at the right time, you can purchase them at Epson Supplies Central<sup>SM</sup> at [www.epson.com/ink3](http://www.epson.com/ink3) (U.S. sales) or [www.epson.ca](http://www.epson.ca) (Canadian sales). You can also purchase supplies from an Epson authorized reseller. To find the nearest one, call 800-GO-EPSON (800-463-7766).



## Epson Photo Paper Glossy

Bright, instant-drying paper for great looking photos and projects.

See the entire line of Epson photo papers at Epson Supplies Central.

## Genuine Epson inks

Look for the numbers below to find your cartridges. It's as easy as remembering your number!



**69** or **88** Black

**69** or **88** Magenta

**69** or **88** Cyan

**69** or **88** Yellow

**68** Try the Epson High Capacity 68 black cartridge available at [www.epson.com/highcapacity](http://www.epson.com/highcapacity) (U.S. sales) or [www.epson.ca](http://www.epson.ca) (Canadian sales).

Epson and Epson Stylus are registered trademarks, Epson Exceed Your Vision is a registered logomark, and Supplies Central is a service mark of Seiko Epson Corporation. DURABrite is a registered trademark of Epson America, Inc.

General Notice: All other trademarks are the property of their respective owners. Epson disclaims any and all rights in those marks.

This information is subject to change without notice.

© 2008 Epson America, Inc. 8/08

CPD-25345R1

Cut out the card to the right and keep it with you when purchasing replacement ink cartridges.

### Epson NX400 Series Ink Cartridges

<b>69</b> or <b>88</b> Black	<b>69</b> or <b>88</b> Magenta
<b>69</b> or <b>88</b> Cyan	<b>69</b> or <b>88</b> Yellow
<b>68</b> High Capacity Black	

