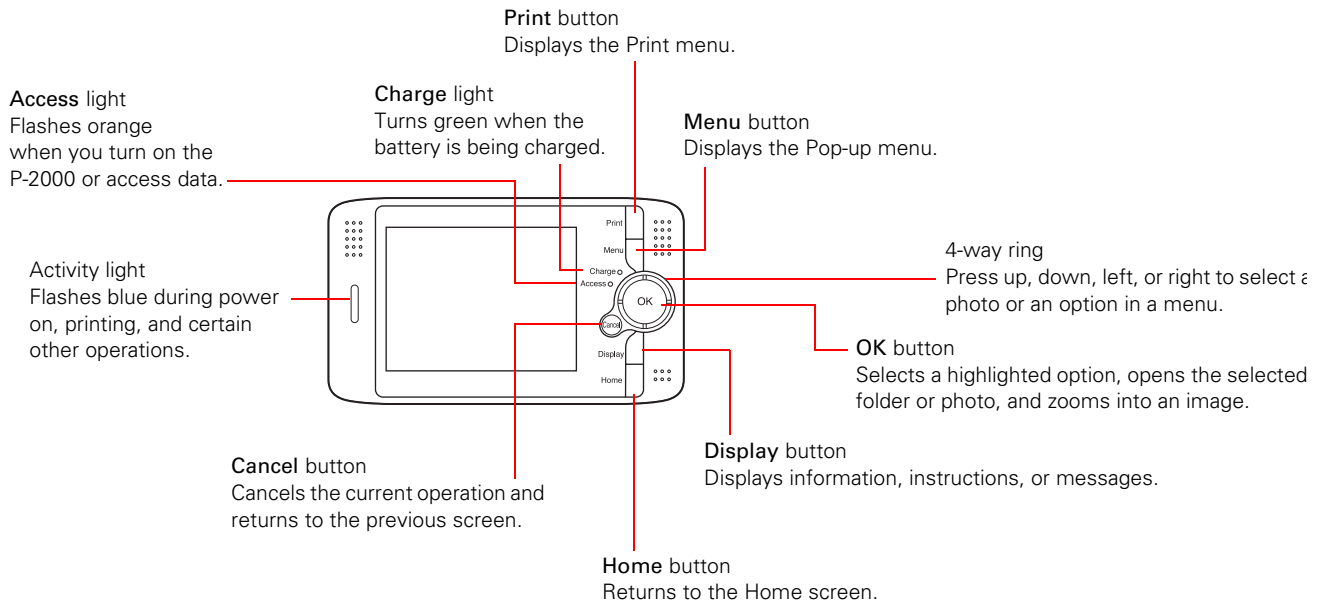
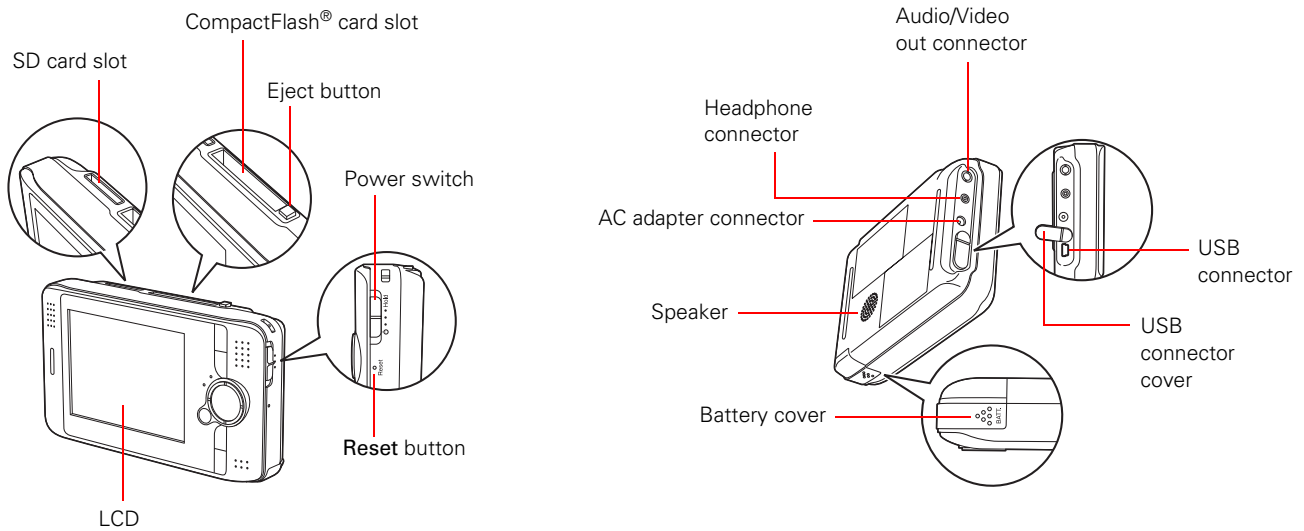


P-2000 Parts



Specifications

General

CPU	TMS320DM270
LCD	3.8 inches, Epson VGA TFT LCD; 640 × 480 pixels; 262,144 colors; 212 ppi
Memory	64MB SDRAM; 4MB flash ROM
HDD	2.5 inch HDD, 40GB, FAT 32
Dimensions (without projections)	Height 3.3 inches (84 mm)
	Width 5.8 inches (147 mm)
	Depth 1.2 inches (31.4 mm)
Weight	Approx. 0.9 lb (415 g), including battery
Temperature	Operating (or charging): 41 to 95 °F (5 to 35 °C)
	Non-operating: -4 to 140 °F (-20 to 60 °C)
Humidity (without condensation)	Operating: 30 to 80%
	Non-operating: 10 to 80%
Memory card	CompactFlash memory card (Type I/ Type II, including Microdrive™ 3.3V); SD™ memory card, MultiMediaCard™
	Note: A commercially available CF adapter is needed to use other memory cards.
Power sources	Lithium-ion battery (EU-97) AC adapter (A351H)

Electrical

Input voltage	DC 5.0 V
Rated current	Maximum 2.3 A
Power consumption	4 W (with the battery)
	9 W (when using the AC adapter)

Interface

USB connector	One USB 2.0 (Mass Storage Class) interface
A/V Out connector	Mini pin jack (3.5 mm)
Headphone Out connector	M3 stereo mini pin jack (3.5 mm)
CF Card slot	One slot (Type I/Type II, 3.3V) for CompactFlash memory card and Microdrive
SD Card slot	One slot for SD memory card and MultiMediaCard

Battery

Type	Rechargeable Lithium-ion battery
Model	EU-97
Size (H × W × D)	0.88 × 0.80 × 2.78 inches (22.45 × 20.4 × 71 mm)
Ratings	3.7 V, 2300 mAH
Temperature	Storing: -4 to 104 °F (-20 to 60 °C)
	Keep the battery in a cool place when storing for a long period.

AC Adapter

Model	A351H
Input	AC 100 to 240 V, 50 to 60 Hz, 0.3 to 0.1 A
Output	DC 5.0 V, 2.3 A
Power consumption	Maximum 18 W

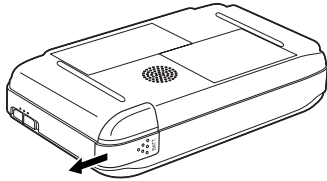
Optional Battery

If you need a replacement battery, order the Lithium ion battery (EU-97), model number B32B818252, from Epson. Contact your dealer or call Epson at (800) 873-7766 or visit the Epson StoreSM at www.epsonstore.com (U.S. sales only). In Canada, please call (800) 463-7766 for dealer referral.

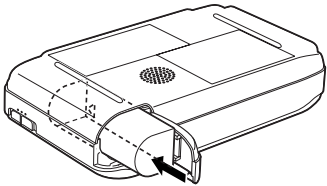
Installing/Replacing the Battery

Follow these steps to install or replace the Lithium ion battery:

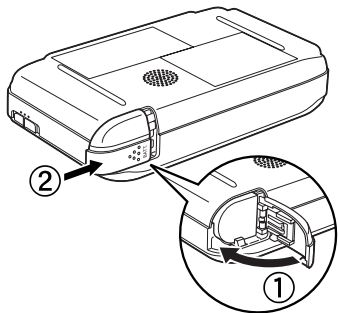
1. Turn the P-2000 upside down and slide the battery cover to the left to open it.



2. If you need to remove the battery, follow the instructions below, then return here to step 3.
3. Insert the battery into the compartment as shown. Make sure the gold contacts on the battery go in first.



4. Close the battery cover and slide it to the right until it clicks.



Removing the Battery

If you need to replace the battery or plan to store the P-2000 for an extended period of time, follow these steps to remove the battery:

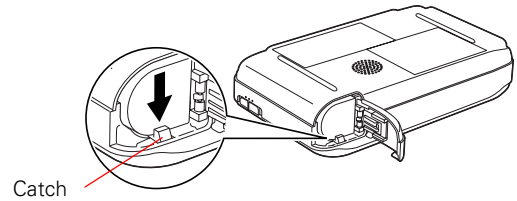
1. Make sure the P-2000 is turned off.
2. Remove the AC adapter if it is connected to the P-2000.

Caution:

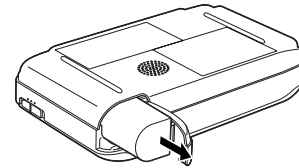
Never remove the battery while the P-2000 is turned on. Doing so may cause files to be lost or damaged.

3. Open the battery cover.

4. Push the catch down. The battery pops out.



5. Pull out the battery. Then close the battery cover.

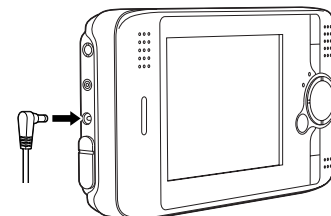


Charging the Battery

After installing the battery, you need to charge it using the AC adapter. It takes about 3 hours to fully charge the battery when the P-2000 is off. It takes longer when the P-2000 is on.

The Charge light is green while the battery is being charged. When the battery is fully charged, the light turns off.

To charge the battery, connect the AC adapter as shown below. Connect the other end to the power cord, and plug it into an electrical outlet.



Caution: Do not connect the AC adapter when the battery is not installed; this can damage the P-2000.

The battery status is displayed in the top right corner of the LCD screen when the P-2000 is on.

	Battery is fully charged.
	Battery power is about half full.
	Battery power is low.
	Battery power is running out. The P-2000 will shut down automatically. Charge the battery using the AC adapter.
	Battery is charging.

Note: The P-2000 stops charging if the battery becomes hot when charging while it is on. It will start charging again when it cools down.

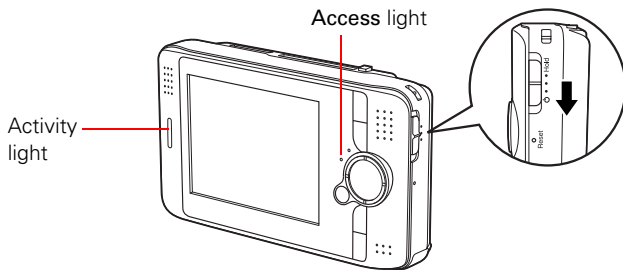
Conserving Battery Power

To conserve battery power and protect the LCD screen, the P-2000 has two power-saving features. If no button has been pressed and there has been no activity for 10 minutes, the backlight on the LCD screen is turned off. After 15 minutes, the power is turned off.

If the screen goes dark because the backlight is turned off, press any button on the P-2000 to resume operation. If the P-2000 has been powered off, you need to turn it back on with the power switch.

Turning the P-2000 On and Off

To turn on the power, slide the power switch down as shown below, then release it. The blue activity light flashes and the Home screen appears.

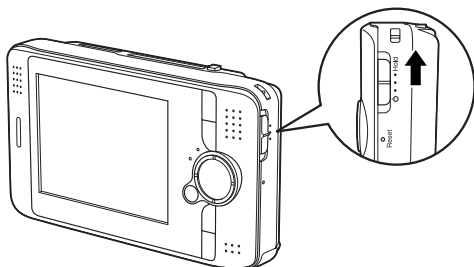


When you're ready to turn off the P-2000, make sure the Access light is off. Then slide the power switch down and hold it down for a few seconds until the Access light flashes and the P-2000 turns off.

Locking the Buttons

You can lock the buttons on the P-2000. This allows you to place it in a purse or backpack and use it with headphones without accidentally pressing the buttons.

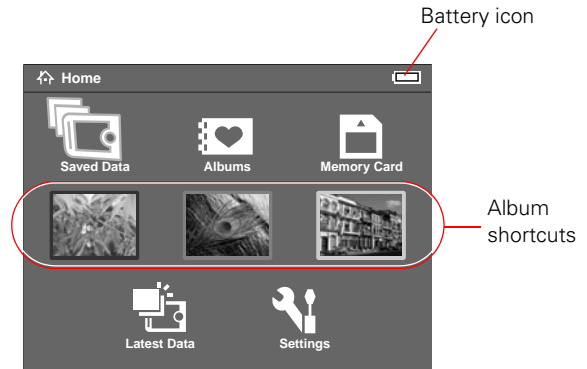
To lock the buttons, slide the power switch to Hold.



To unlock the buttons, slide the power switch back to the middle position.

Using the Home Screen

Whenever you turn on the P-2000, the Home screen appears. All operations can be started from this screen.



The following table summarizes the Home Screen functions.

Icon	Function
Battery	Indicates the charge remaining in the battery.
Saved Data	Lets you select folders that include files saved on the P-2000.
Albums	Lets you select albums that you have created for your images, videos, or audio files.
Memory Card	Lets you display or copy files from a memory card.
Shortcut icons	Let you go right to a favorite album.
Latest Data	Lets you access the most recent files saved on the P-2000.
Settings	Lets you change the P-2000's settings.

You can return to the Home screen at any time by pressing the Home button.

Using Memory Cards

The P-2000 has two memory card slots, one for CompactFlash cards, and one for Secure Digital cards. It supports the following types of memory cards:

- ❑ CompactFlash Type I and Type II
- ❑ Microdrive™ (3.3 V)
- ❑ SD (Secure Digital)
- ❑ MultiMedia card (MMC V 2.1 or later), up to 512MB

If you have a CompactFlash adapter, you can also use the following types of memory cards:

- ❑ Memory Stick®
- ❑ SmartMedia™ (3.3 V only)
- ❑ xD-Picture card™

Caution: Make sure you follow all instructions included with your memory card.

Never remove a memory card while the **Access** light is flashing. Doing so may cause files to be lost or damaged.

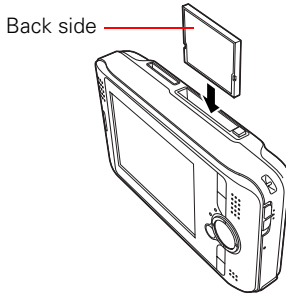
Do not put labels or stickers on memory cards. The sticker may peel off, preventing the card from being ejected and damaging the P-2000.

Avoid using or storing cards in direct sunlight, or in places that are extremely hot, humid, or dusty.

Using the CompactFlash Card Slot

You can use Type I and Type II CompactFlash cards or Microdrive cards in the C/F Card slot.

Insert the memory card into the slot with the back of the card facing the LCD. Then push the memory card all the way into the slot.

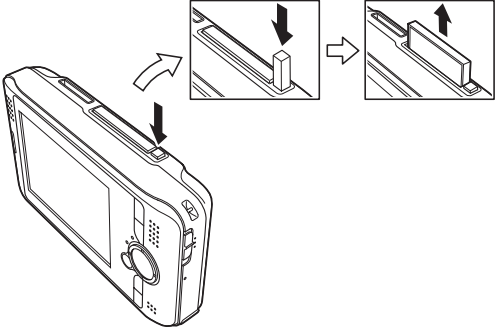


Caution: Make sure you insert memory cards in the correct orientation. Otherwise, the card and P-2000 may be damaged.

If you are using a CompactFlash adapter, put the card into the adapter and insert the adapter into the slot.

To remove a card from the C/F Card slot, first make sure the **Access** light is off. Then press the eject button and pull out the card.

If the button is not sticking out, press it once to pop it out, then press it again to eject the card.

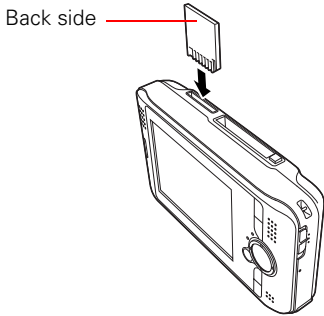


Note: If you are using a CompactFlash adapter, remove the adapter from the P-2000; do not remove only the memory card.

Using the Secure Digital Card Slot

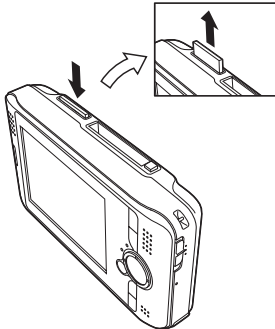
You can use Secure Digital or MultiMedia cards in the SD Card slot.

Insert the memory card into the slot with the back of the card facing the LCD. Then push the memory card all the way into the slot.



Caution: Make sure you insert memory cards in the correct orientation. Otherwise, the card and P-2000 may be damaged.

To remove a card from the SD Card slot, first make sure the **Access** light is off. Then press the top of the card to make it pop out. Then pull it out of the slot.



Copying Files from a Memory Card

After you insert a memory card, you can browse the files and decide what you want to do with them, or simply copy all the files on the card to the P-2000.

Note: When the battery is low, copying may not be completed. Use the AC adapter if this happens.

Supported Image Formats

Supported Files	Extension	Details
JPEG	.jpg .jpeg	Minimum size: 160 × 120 pixels Maximum size: 8.9 megapixels Maximum image aspect ratio: 8:1 Progressive JPEG files are not supported.
RAW	.nef .crw .erf .cr2	JPEG data stored in the header of RAW files is displayed.

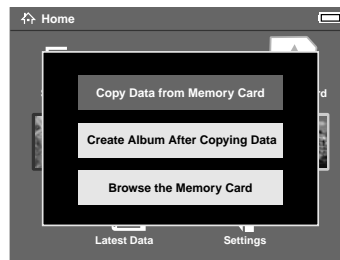
The P-2000 supports images in RAW format that you have taken with the following digital SLR cameras:

- Epson R-D1
- Nikon® D100, D1H, D2H, D1X, and D70
- Canon® EOS-D30, EOS-D60, EOS-10D, Kiss Digital, and EOS-1D Mark II

RAW files do not support slide shows, zooming, rotation, or direct printing from the P-2000.

Copying your files

1. Insert the memory card.
2. Select **Memory Card** in the Home screen and press the OK button.
3. If necessary, select the memory card you want to access. You see the following menu:



4. Select what you want to do by pressing up or down on the 4-way ring. Then press the OK button.

- If you select **Copy Data from Memory Card**, copying starts and the following screen appears:



The files are copied to a folder that is automatically created on the P-2000. The folder is named according to the date, for example 20041225.001. Folders are numbered in the order they are copied.

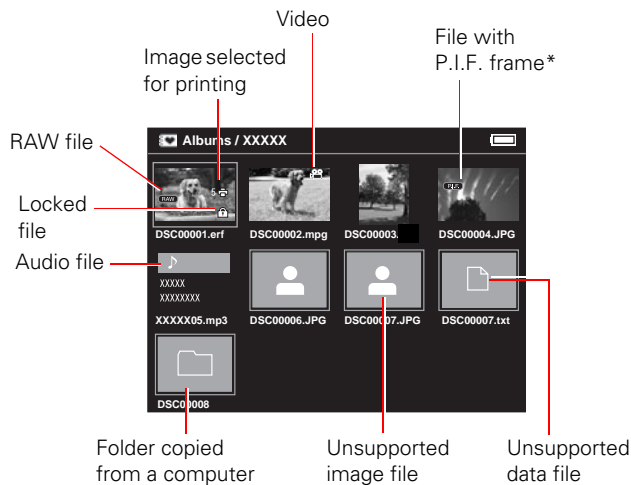
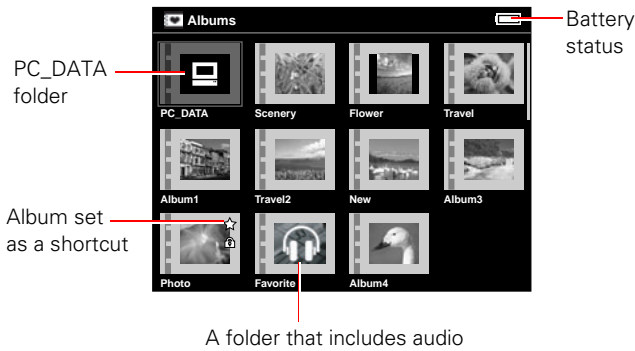
- If you select **Create Album After Copying Data**, you can select an album or create a new one. (See the *P-2000 User's Guide* for instructions.)
- If you select **Browse the Memory Card**, you see thumbnail images of the files on the card.

Viewing and Playing Images, Audio, and Video

After you have copied files from a memory card, you can view or play them in various ways on your P-2000 or on a TV or projector.

Screen Icons

The following illustrations identify the icons that appear on the screen:



* P.I.F. is the abbreviation for Print Image Framer[®] which lets you add frames to your images. Some Epson digital cameras support this feature.

Screen icon descriptions

	PC_DATA folder	This is one of the default albums, which you use for copying files from your computer.
	Battery status	Indicates the amount of battery power remaining.
	Folders containing audio	Only folders that do not include image or video files display this icon.
	Album shortcuts	Up to 3 album shortcuts can be created for quick album access.
	RAW files	Appears on RAW image files.
	Images selected for printing	The number next to the icon indicates how many photos have been selected for printing.
	Video files	Appears on video files.
	Files with P.I.F. frames	P.I.F. icons are displayed only in Saved Data.
	Unsupported data files	You can set whether unsupported files are displayed or not. The default setting is not to display them.
	Unsupported image files	
	Folders copied from a computer	When you select a folder in Saved Data, all files including those in subfolders are displayed. Subfolders are not displayed.
	Audio files	Indicates that the file includes sound.
	Locked files	Indicates that the photo has been locked.

Note: Files whose names contain characters other than alphanumeric are not displayed.

When you select an album, files and subfolders included in the selected folder are displayed. Subfolders are displayed with the icon.

To display information or instructions, press the **Display** button.

Displaying Images

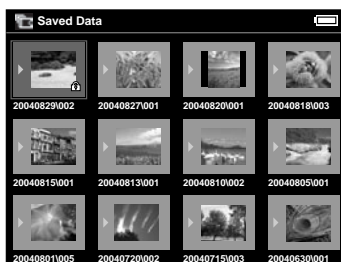
You can display all images in Saved Data or Albums as thumbnails. You can also display an image in full-screen format.

1. Select **Saved Data** or **Albums** in the Home screen and press the OK button.



Folders or albums that include data such as images, videos, or audio appear.

Note: In the Saved Data screen, folders are displayed by memory card. You can change the setting to display folders by date.



2. Select the folder or album which includes images you want to view by using the 4-way ring, then press the OK button.

To move to the next screen, press down on the 4-way ring and hold.

Thumbnails of the images and other data are displayed:



3. Use the 4-way ring to select the image you want to view, then press the OK button. The selected image is enlarged to fill the screen:



Zooming an image

- To zoom in on an image displayed full screen, press the OK button. Continue pressing it to zoom in even further.
- To zoom out, press the Cancel button.
- To move around a zoomed image, use the 4-way ring.

Playing Audio and Videos

The P-2000 supports video files in resolutions ranging from 160 × 112 pixels to 640 × 480 pixels, with file sizes up to 2GB. The P-2000 supports audio files up to 100MB.

WMV, MPEG1, MPEG2, and DVD-Video are not supported. However, you may be able to convert files to supported formats using programs such as QuickTime® Pro.

Supported video formats

File extension	Video codec	Audio codec	Max bit rate
.avi	MPEG4	AAC, MP3, ALaw, μLaw PCM, ADPCM	1.5 Mbps (at 24 fps)
	Motion JPEG	ALaw, μLaw, PCM	3 Mbps
.mov	MPEG4	AAC	1.5 Mbps (at 24 fps)
	Motion JPEG	ALaw, μLaw, PCM	3 Mbps
.mp4	MPEG4	AAC	1.5 Mbps (at 24 fps)
.asf	MPEG4	ADPCM	1.5 Mbps (at 24 fps)

Supported audio formats

File extension	Audio codec	Detail
.m4a .aac	AAC (MPEG4)	Maximum bit rate: 320 kbps (48 kHz, 16 bit Stereo)
.mp3	MP3	Maximum bit rate: 320 kbps (48 kHz, 16 bit Stereo)

To start playing an audio or video file, just select it and press the OK button.

Note the following when playing video and audio:

- ❑ All videos are played with the LCD resolution (640 × 480 pixels).
- ❑ While the P-2000 is playing audio, it turns off the LCD to conserve battery power. The LCD comes back on when you press any button.
- ❑ You can select audio files to use as slide show background music using the pop-up menu.
- ❑ You can listen to audio using headphones. Simply insert the headphone cable into the headphone connector on the side of the P-2000.

The following table describes how the buttons work while playing audio and video files:

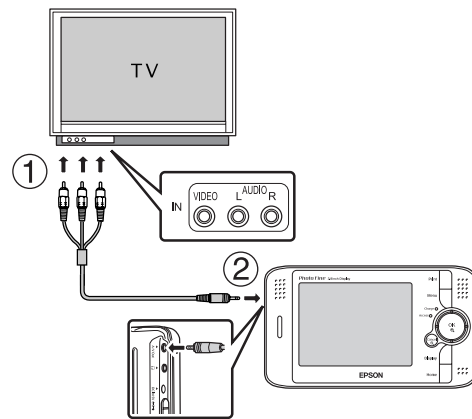
Button	Audio function	Video function
OK	Pause (press OK again to restart).	
Cancel	Stop the audio or video and return to the previous screen.	
Up	Raise the volume.	
Down	Lower the volume.	
Left	Play the previous audio file. Press and hold to rewind.	Rewind.
Right	Play the next audio file. Press and hold to fast forward.	Fast forward.

Viewing Files on a TV

You can connect the P-2000 to a TV or AV projector and view your images, videos, and slide shows.

You'll need a camcorder-to-TV/VCR audio/video cable (A/V cable with 3.5 mm mini-plug to 3 RCA phono plugs). You can purchase the cable at an electronics store.

1. Connect the three RCA plugs to the video and audio IN jacks on your TV.
2. Connect the mini-plug on the other end to the AV Out connector on the side of the P-2000. The LCD screen turns off.



3. Set the TV display to video input from the P-2000.

Note: Some TVs may crop your images on the top and bottom.

You can now use all of the P-2000 controls to play slide shows, photos, and videos on your TV.

Copying Files to and From Your Computer

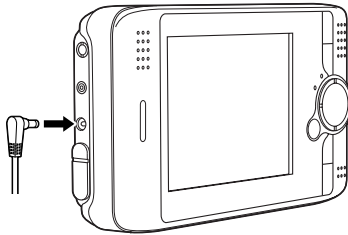
You can connect the P-2000 to your computer using the USB cable that came in the box. Your computer recognizes the P-2000 as an external hard disk drive, and you can easily copy files back and forth.

Note: You cannot copy files from a memory card in the P-2000 directly to your computer; you must first copy them to the P-2000 and then to the computer.

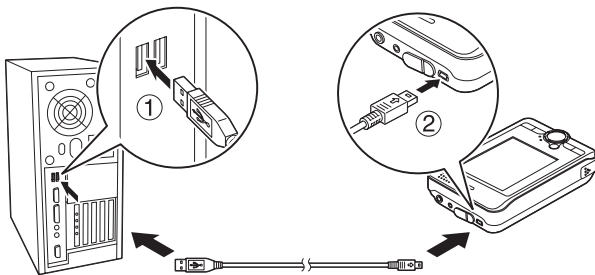
You should use the AC adapter when you connect the P-2000 to your computer.


Note: If your computer uses Windows® 98SE, you need to install driver software before you connect the P-2000. See the *P-2000 Basics* guide for instructions.

1. Connect the AC adapter to the P-2000 and plug it in. Then turn on the P-2000 and your computer. Make sure the Home screen is displayed.



2. Connect the USB cable to your computer. Then open the USB connector cover and connect the other end of the USB cable to the P-2000.



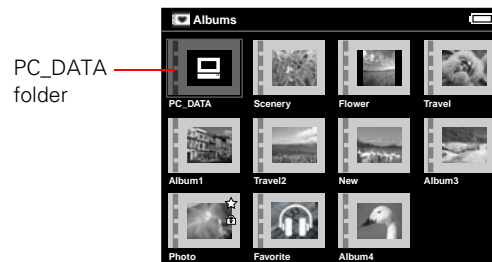
The  PC peripheral mode icon is displayed briefly, then the LCD turns off. (You can turn it on by pressing any button.)

3. Select the EPSON_PV drive on your computer. In Windows, you may have to use My Computer to select the drive.

From your computer, you'll see an Albums folder and a Cards folder (corresponding to Saved Data on the Home screen). Do not change the names of these folders or any of their subfolders.

To locate files in the Cards folder, you'll need to open a series of subfolders.

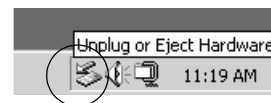
4. Copy files to the PC_DATA folder (within the Albums folder) only. If you copy files to any other folder, the P-2000 will not recognize the files.



The PC_DATA folder is one of the default albums on the P-2000; you cannot rename or delete it or create an album thumbnail for it.

Disconnecting the P-2000 From Your Windows Computer

1. Click Unplug or Eject Hardware on the computer screen.



2. Turn off the P-2000 and remove the USB cable from your computer.

Note: After copying files to a computer running Windows 98, you may see a blue screen when you remove the cable. To avoid this, turn the computer off before removing the cable.

3. Remove the USB cable from the P-2000.

Disconnecting the P-2000 From Your Macintosh®

1. Drag and drop the P-2000 icon to the trash.
2. Turn off the P-2000 and remove the USB cable from your Macintosh.
3. Remove the USB cable from the P-2000.

Direct Printing

You can print your photos directly from the P-2000 to any of the following Epson printers without connecting a computer:

- ❑ Epson Stylus® Photo R300 and R300M
- ❑ Epson Stylus Photo R320
- ❑ Epson Stylus Photo RX600
- ❑ PictureMate™

Note: Additional printers may be supported; check the Epson web site to get the latest information: <http://support.epson.com>.

You can use the following sizes and types of paper:

Paper	Size
Premium Glossy Photo Paper	4 × 6 in., 5 × 7 in., Letter, A4
Premium Semigloss Photo Paper	Letter
PictureMate™ Photo Paper	4 × 6 in.

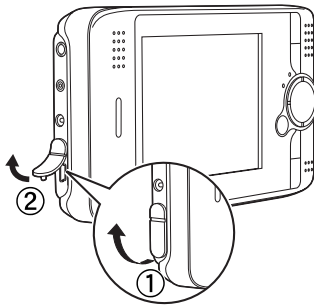
Note: PictureMate prints on 4 × 6-inch paper only.

For details about paper, see your printer documentation.

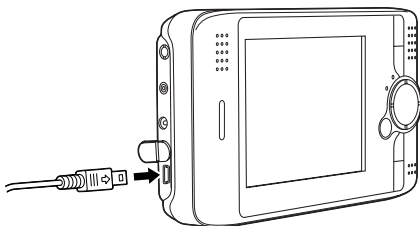
Connecting the P-2000 to a Printer

Follow these steps to connect the P-2000 to your printer:

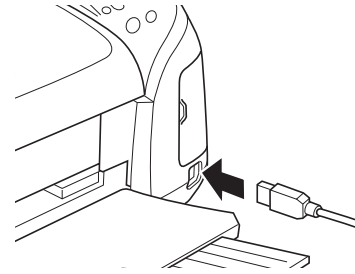
1. Make sure the P-2000 and the printer are turned off.
2. Open the USB connector cover:



3. Connect the small end of the USB cable to the P-2000.



4. Connect the other end of the cable to the EXT I/F connector on the printer.



The EXT I/F connector may be in a different location on your printer.

5. Connect the AC adapter to the P-2000.
6. Turn on the printer and the P-2000.

Note: Don't worry if you see the message **Camera is connected** on the printer's LCD panel. You will still be able to print from the P-2000.

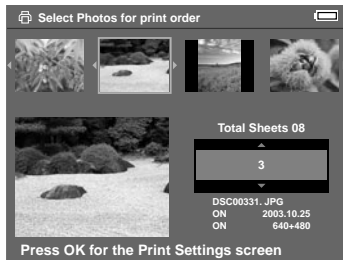
Printing Your Photos

1. Make sure the printer is connected and has paper and ink. Make sure the AC adapter is connected to the P-2000 before you print.
2. To print a single photo, select the image. If you want to print multiple images in a folder or album, just open the folder or album.
3. Press the PRINT button. You see the Print menu:



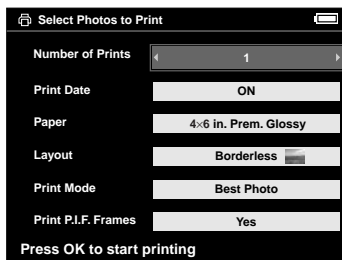
4. Do one of the following:

- To print only the selected image, choose **Print This Photo**.
- To print all the images in the selected folder or album, select **Print All Photos**.
- To add images to be printed and select the number of copies, choose **Select Photos to Print**. You see this screen:



Select the images you want to print and the number of copies for each one.

5. Press the OK button. You see the Print Settings menu:



6. Use the 4-way ring to choose the settings you want:

Number of Prints	Select the number of copies, up to 99, you want printed of the selected photo(s).
Print Date	Set whether to print the date the photo was taken (if the image includes date information) or the date the file was created.
Paper	Select the paper type and size that is loaded in the printer.
Layout	Choose Border or Borderless printing. If you selected all photos, choose the number per page. For Letter size, choose 3, 4, 9, or 20.
Print Mode	Select Photo or Best Photo.
Print P.I.F. Frames	Set whether to print the frame if the image includes P.I.F. data.

7. Press the OK button when you are ready to start printing.

During printing, the LCD is turned off. When you are finished printing, be sure to disconnect the USB cable.

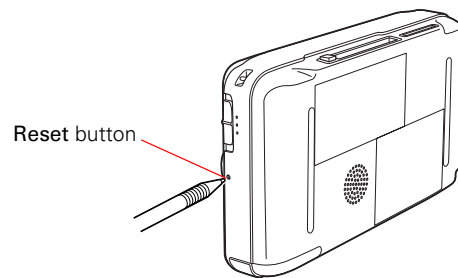
Updating the Firmware and Printer Driver

Epson will occasionally update the P-2000 firmware. You can download the latest version from Epson's Support web site: <http://support.epson.com>. Instructions for updating the firmware in your P-2000 will be included with the download information.

Resetting the P-2000

If the P-2000 locks up, stops working, or you want to restore the default values, you can reset it.

Press the **Reset** button with a thin object.



The P-2000 shuts off, resets its default values, and comes back on.

Related Documentation

- CPD-18999 *Epson P-2000 Basics*
- CPD-18998 Epson P-2000 CD-ROM with electronic *Epson P-2000 User's Guide*