

EPSON Product Support Bulletin

Date:	3/20/2008	Originator:	JD
PSB #:	PSB.2008.01.001B	Authorization:	Kps
Reference:	TE07-0449 Rev. B, C and D	Total Pages:	4
Product(s):	Epson P-3000 and P-5000 Multimedia Storage Viewers		
Subject:	New Firmware Release version 01.20		

This bulletin was created to inform you of a firmware update for the P-3000/P-5000 multimedia viewers. The updated firmware provides certain improvements as outlined below.

Description of Change:

The firmware has been updated to version **01.20**.

Reason:

To provide the following fixes and/or improvements:

- Supports RAW files (.orf) from the Olympus E-410, E-510, E-3 (new) and 40D (new) digital cameras
- Supports RAW files (.nef) from the Nikon D3 and D300 digital cameras – new
- Supports RAW files (.arw/.srf/.sr2) from the Sony A700 digital camera – new
- Corrects movie audio playback issues on files using an 11.025kHz sampling frequency
- Corrects movie audio playback issues on files using the G.726 codec
- Corrects an intermittent lock-up that can occur when using the “Set as folder icon” function in Backup Files with Auto-Rotation enabled – new

P-3000/P-5000 Firmware Update Instructions:

Note: Before starting the firmware update process, confirm that there are no files on the memory card.

To download and install the new firmware file, you will need the following:

- Windows-based PC or Macintosh computer with Internet access
- Operating Systems: Windows 2000/XP Home/Pro/XP/XP Pro x64 Edition/Vista
- Operating Systems: Macintosh OS 10.2.8 to 10.5
- Memory card reader/writer
- 128MB or higher formatted Compact Flash or SD memory card (there must be no data on the card)
- P-3000/P-5000 battery installed (fully-charged battery recommended)
- AC adapter – must be plugged in to a wall socket and connected to the viewer before the firmware update can be performed

Firmware Update Procedure:

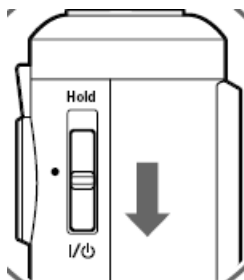
Download the file **epson12463.exe** for Windows users or **epson12464.dmg** for Mac users from the Epson website (www.epson.com). Follow the on-screen instructions to download and extract the file onto your computer.

To verify the current firmware version on your viewer, power on the unit, select Settings from the Home screen and press OK. In the Settings screen use the 4 way ring to scroll down to the firmware version menu. Press OK. If the firmware says 01.20.01.00, then you do not need to perform the update described in this bulletin. If you see an earlier version such as 01.10.01.00 (see image below), then proceed to the next section.

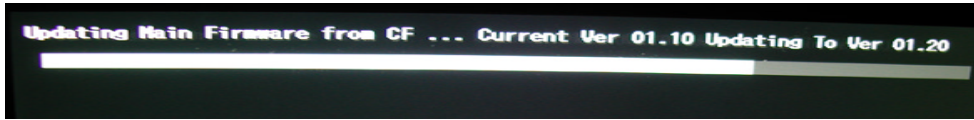


Steps:

1. Install a **blank** memory card into a memory card reader/writer and copy the "PSV3FIRM" folder (including all the files in the folder) to the root directory of the memory card.
2. Verify that the battery is installed in the P-3000 or P-5000 viewer.
3. Connect the AC adapter to the viewer, **but do not power on the viewer.**
4. After the firmware file has been copied to the memory card, insert the CompactFlash or SD memory card into the viewer.
5. Press and hold down the "OK" and ★ keys while sliding the "POWER" switch as shown below.



When you see the firmware update screen (see reference image below), release the **OK** and **★** keys. **Note:** If you do not see this screen, power off the unit and start the firmware process again.



During the update process, the message screen will display the current firmware and updated firmware versions. Then the message "Updating Resources" will appear.

Important: Do not remove the battery or disconnect the AC adapter during the firmware update process.

6. The firmware update process is completed when you see this screen (see image below).

7. Power off the unit and remove the CompactFlash or SD memory card.

8. Power on the viewer and verify the new firmware version. It should say **01.20.01.01** (see image below).

EPSON Product Support Bulletin

Date:	2/27/2007	Originator:	JD
PSB #:	PSB.2007.03.001	Authorization:	<i>Wps</i>
Reference:	TE06-0487 Rev. A	Total Pages:	4
Product(s):	Epson P-3000 and P-5000 Multimedia Storage Viewers		
Subject:	New Firmware Release version 01.10		

This bulletin was created to inform you of a firmware update for the P-3000/P-5000 multimedia viewers. The updated firmware provides certain improvements as outlined below.

Description of Change:

The firmware has been updated to version **01.10**.

Reason:

To improve product operation and functionality. These changes include:

- Improved functionality in the Print Quality/Print Settings screens
- Improved performance when playing videos using the H.264 codec
- Zoom feature performance improvement when magnifying images
- Improved performance when viewing SH901is formatted images in Display Photo Enhance Mode
- Improved performance when viewing rotated images in Display Photo Enhance Mode
- Viewer no longer locks up when repeatedly trying to play a non-supported audio file
- "Backup complete" message no longer appears when disconnecting USB cable during a file backup
- When playing music files, improved scrolling of music titles that exceed 32 bytes in length
- Improved operation key performance when playing music files
- Update process improved for saving files with unsupported long names
- "Press Reset" error no longer appears when trying to play JPEG files with unsupported long names
- Improved menu functionality when using the Rate Photos feature on zoomed images
- Improved functionality when modifying folder names with upper and lower case letters
- Improved functionality when performing consecutive memory card file back-ups using card adapter
- Improved functionality when selecting or accessing video data folders

P-3000/P-5000 Firmware Update Instructions:

Note: Before starting the firmware update process, confirm that there are no files on the memory card.

To download and install the new firmware file, you will need the following:

- Windows-based PC or Macintosh computer with Internet access
- Operating Systems: Windows 2000/XP Home/Pro/XP/XP Pro x64 Edition
- Operating Systems: Macintosh OS 10.2.8 to 10.4.x
- Memory card reader/writer
- 128MB or higher formatted Compact Flash or SD memory card (there must be no data on the card)
- P-3000/P-5000 battery installed (fully-charged battery recommended)
- AC adapter – must be plugged in to a wall socket and connected to the viewer before the firmware update can be performed

Firmware Update Procedure:

Download the file **epson12233.exe** for Windows users or **epson12234.dmg** for Mac users from the Epson website (www.epson.com). Follow the on-screen instructions to download and extract the file onto your computer.

To verify the current firmware version on your viewer, power on the unit, select Settings from the Home screen and press OK. In the Settings screen use the 4 way ring to scroll down to the firmware version menu. Press OK. If the firmware says 01.10.01.00 (see image below), then you do not need to perform the update described in this bulletin.

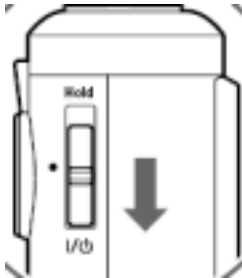


If you see an earlier version such as Ver: 01.03.01.00, then proceed to the next section.

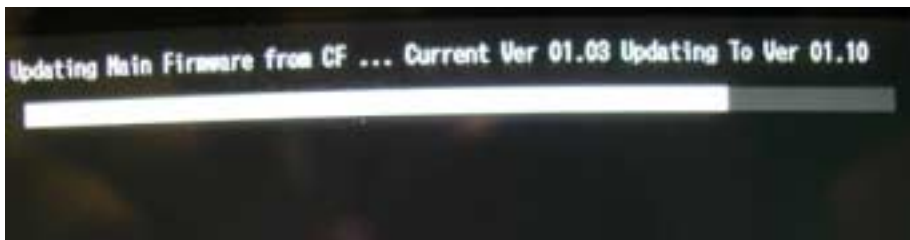
Steps:

1. Install a **blank** memory card into a memory card reader/writer and copy the "PSV3FIRM" folder (including all the files in the folder) to the root directory of the memory card.

2. Verify that the battery is installed in the P-3000 or P-5000 viewer.
3. Connect the AC adapter to the viewer, **but do not power it on**.
4. After the firmware file has been copied to the memory card, insert the CompactFlash or SD memory card into the viewer.
5. Press and hold down the “**OK**” and ★ keys while sliding the “**POWER**” switch as shown below.



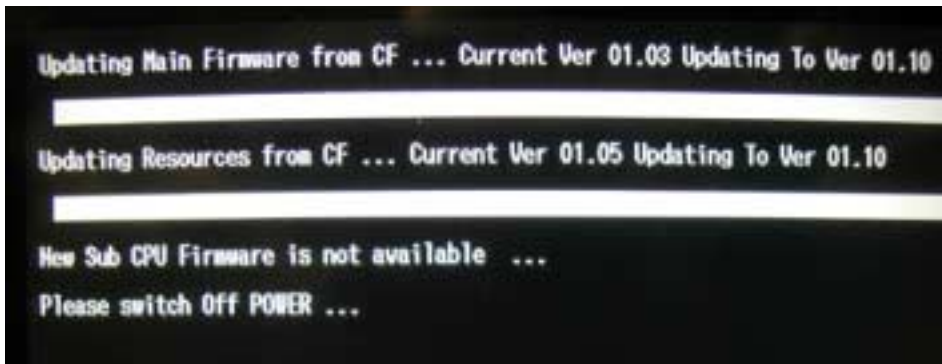
When you see the firmware update screen (see image below), release the **OK** and ★ keys. **Note:** If you do not see this screen, power off the unit and start the firmware process again.



During the update process, the message screen will display the current firmware and updated firmware versions. Then the message “Updating Resources” will appear.

Important: Do not remove the battery or disconnect the AC adapter during the firmware update process.

6. The firmware update process is completed when you see this screen (see image below).



7. Power off the unit and remove the CompactFlash or SD memory card.
8. Power on the viewer and verify the new firmware version. It should say **01.10.01.00** (see image below).

