

Start Here

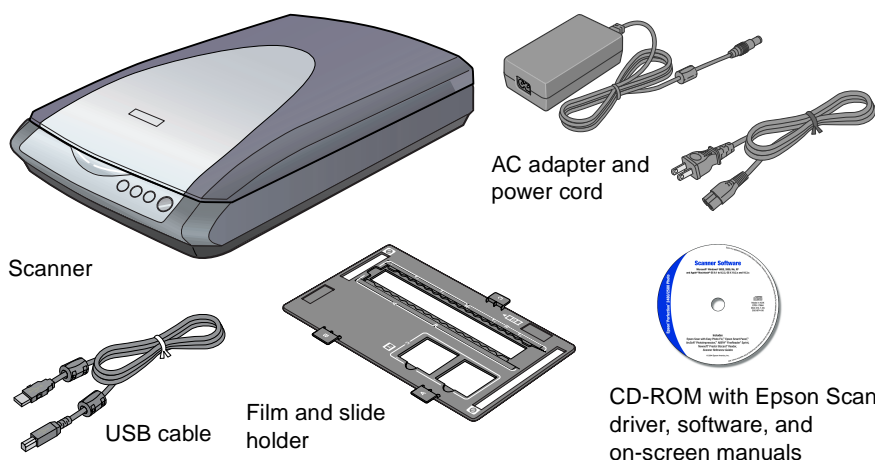
Epson® Perfection® 2480 Photo Epson® Perfection® 2580 Photo

404877-00 XXX

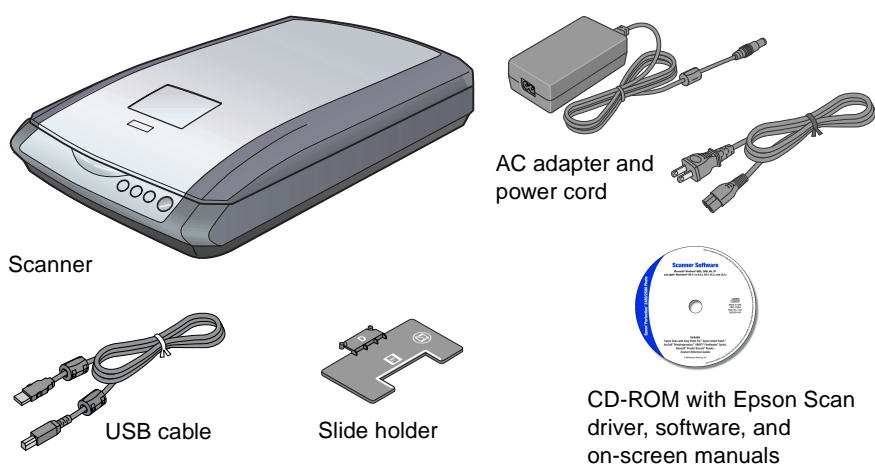
1 Unpack Your Scanner

- 1 Make sure you have all the parts shown below for your Epson scanner:

Perfection 2480 Photo

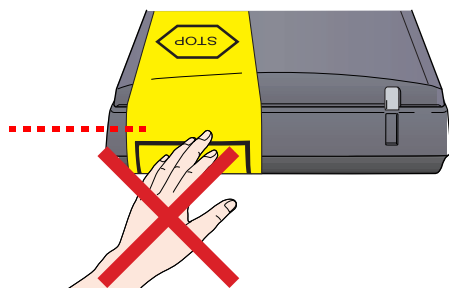


Perfection 2580 Photo



- 2 Remove all the packing tape, but leave the large stickers in place until you are instructed to remove them.

IMPORTANT!
Leave the sticker in place until you are instructed to remove it



Note: The illustrations on this sheet show the Perfection 2580 Photo scanner, but the instructions are the same for the Perfection 2480 Photo except where noted.

2 Install the Software

Wait! You must install your software before connecting the scanner to your computer. The installation process may take several minutes. Be sure to close all open programs and turn off any virus protection programs.

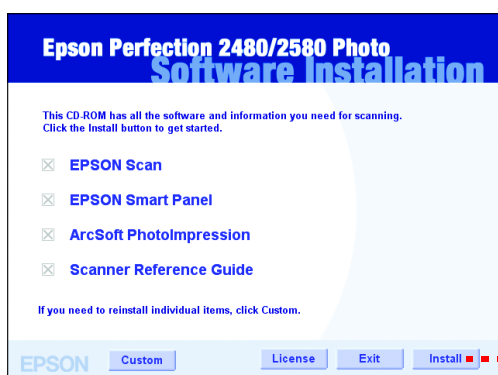
Note: The software works with Windows® 98SE, Me, 2000, and XP, and Macintosh® OS 9.1 to 9.2.2 and OS X 10.2.x and 10.3.x.

- 1 Insert the scanner software CD-ROM in the CD-ROM or DVD drive. The installer starts automatically in Windows; on a Macintosh, the EPSON folder opens.

If it doesn't start or the folder doesn't open, do the following:

- Windows XP: Click **Start**, click **My Computer**, then double-click **Epson**.
- Windows 98, Me, and 2000: Double-click **My Computer**, then double-click **Epson**.
- Macintosh: Double-click the **Epson** CD-ROM icon.

- 2 If you're using Mac® OS X, double-click the **Mac OS X** folder, then double-click the **Epson** icon.
If you're using Mac OS 9.x, double-click the **Epson** icon.
- 3 Click **Continue**, then read the license agreement and click **Agree**.
- 4 At the Software Installation screen, click **Install**. Enter your Macintosh Administrator name and password as necessary during installation.



Click **Install**

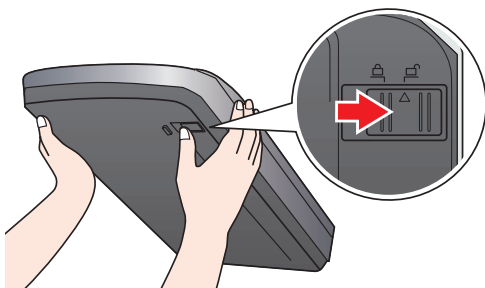
- 5 Follow the on-screen instructions to install each program. Click **Next** or **Finish** (Windows) or **Install** or **Quit** (Macintosh) as needed. Note that Epson Smart Panel™ installs in several steps.
Note: If you're installing on Macintosh OS 9.x, you may see a prompt to update your Carbon Library. After installing it and restarting your system, double-click the **Epson** icon, then click **Install** to continue.
- 6 At the end of the installation, click **Exit**.
- 7 At the Product Registration screen, register your scanner as instructed.

3 Connect the Scanner

After your software is installed, it's time to connect your scanner.

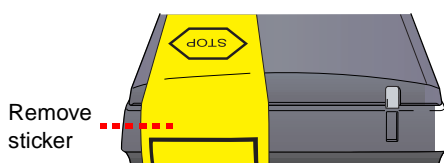
- 1 Remove the sticker wrapped around the front of the scanner covering the transportation lock on the bottom.

Caution: Don't turn the scanner over to access the lock or you may damage the scanner.

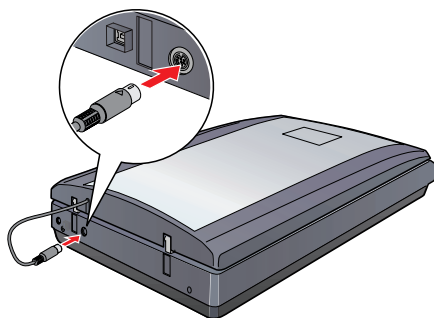


- 2 Slide the transportation lock to the unlock position.

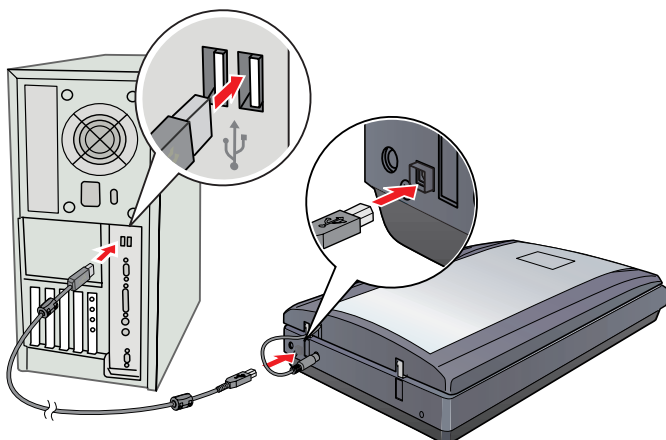
- 3 Remove the yellow sticker.



- 4 Connect the cable for the built-in transparency unit (scanner cover).

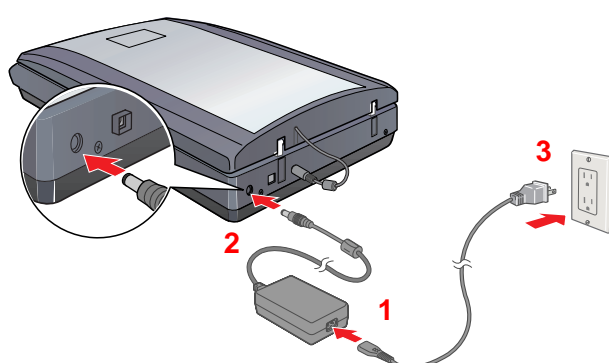



- 5 Plug the square end of the USB cable into the scanner's USB port. Then plug the flat end into any available USB port on your computer or hub.



Note: Your scanner may not work correctly if you use a USB cable other than the one supplied by Epson or connect it through more than one hub.

- 6 Connect the scanner's power cord as shown below.



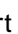

The scanner turns on and the  Start light flashes green. It stops flashing and stays on green when the scanner is ready.

Caution: When you unplug the scanner, wait at least 10 seconds before plugging it back in. Rapidly unplugging and plugging in the scanner can damage it.

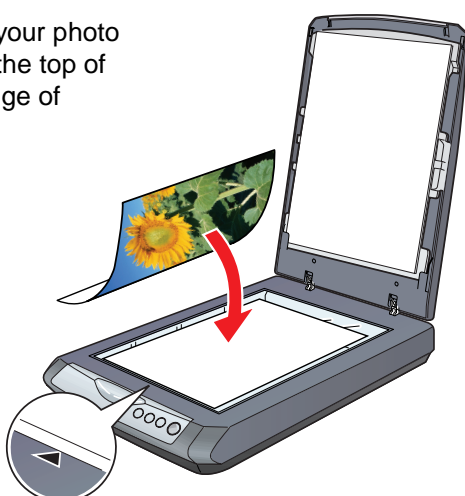
- 7 Remove and store your scanner software CD-ROM.
8 Restart your computer.

Scanner Basics


Your First Scan

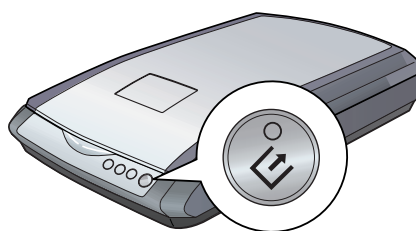
The  Start button on your scanner automatically opens Epson Smart Panel, making it easy for you to scan your images for many different uses. Here's how to use the  Start button to scan photos and save them as files.

- 1 Raise the scanner cover and place your photo face down on the glass. Make sure the top of the document is against the front edge of the scanner glass.



- 2 Close the scanner cover.

- 3 Press the  Start button on your scanner.



Note: In Windows, if you see a message when you press the  Start button, select **EPSON Smart Panel**, click **Always use this program for this action**, then click **OK**.

Epson Smart Panel opens on your computer.



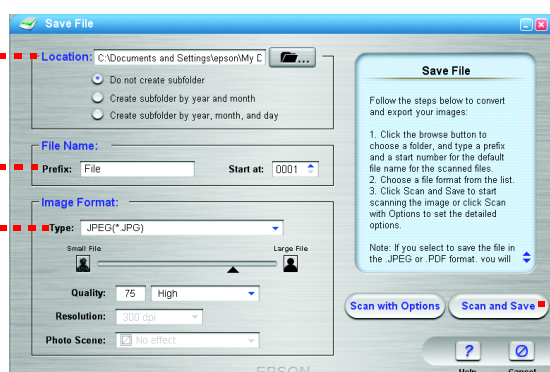
- 4 Click the  **Scan and Save** button.

- 5 Select a location, prefix (name), and file type for your scanned image, then click **Scan and Save**. Note the location so you can easily find your file later.

Select a folder

Select a filename prefix

Select a file format



Click **Scan and Save**

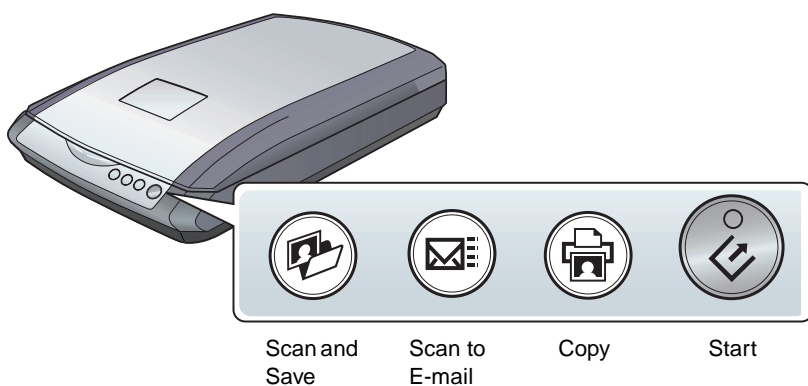
A progress meter appears on the screen and your document is automatically scanned by Epson Scan.

- 6 After your document is scanned, Epson Scan saves it in the location you specified and opens it in ArcSoft® PhotoImpression.™

Using the Scanner Buttons

The scanner buttons make scanning easy. Just place your document face down on the scanner and press the button for the type of scan you want. Smart Panel automatically opens and scans your document. Then follow the easy on-screen instructions to finish your task.

Note: If you are using OS X, make sure Smart Panel is installed in an OS X environment, not Classic mode. Otherwise, Classic mode may start when you press a scanner button.



Restoring Color in Photos

If you have faded photos, slides, or negatives, you can use the Color Restoration setting in your software to bring them back to life.

Start Epson Scan and select **Home Mode** or **Professional Mode** in the Mode box at the top of the screen.



Select your settings and click the **Preview** button at the bottom of the screen.

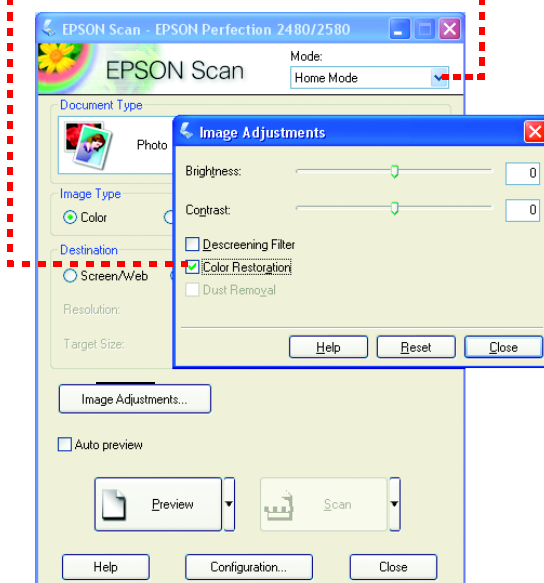
Select the **Color Restoration** checkbox. (In Home Mode, click the **Image Adjustments** button first. In Professional Mode, scroll to the bottom of the screen.)

For complete steps, see your on-screen *Reference Guide*.

Note: You can also use the Color Restoration feature in the Epson Smart Panel copy utility. See the on-screen help in the copy utility for details.

Color Restoration checkbox

Mode box



Scanning Film or Slides

Tip: Make sure your negatives or slides are dust-free for the best scan. You can also select the Dust Removal setting in Epson Scan to improve your scan.

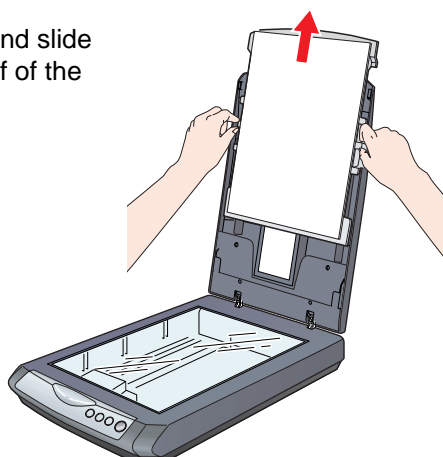


Perfection 2480 Photo

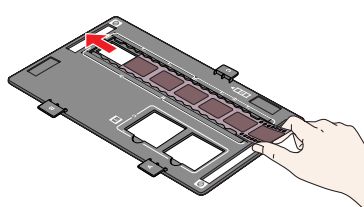
If you have the Perfection 2480 Photo, its cover has a built-in transparency unit (TPU). To scan film or slides, you'll need to remove the reflective document mat from the cover and place the film or slides in a holder on the scanner glass.

- 1 Lift the scanner cover all the way up and slide the reflective document mat up and off of the scanner cover.

Note: Make sure the transparency unit cable is connected to the back of the scanner (see step 4 in "Connect the Scanner").



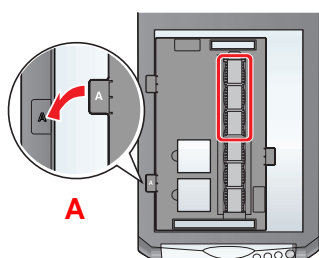
- 2 If you're scanning film, slide it into the film holder with the shiny base side facing down. Your images and any wording on the film strip should appear backwards on the side that faces up.



- 3 Place the film holder in the correct position for your film or slides. For slides, place the holder on the scanner first, then place the slides in the holder. Match the letter on the film holder tab with the corresponding letter on the scanner.

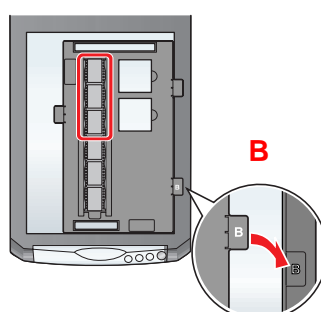
A Negatives

Scans the first 3 frames of the film strip in the 1, 2, and 3 spots on the holder.



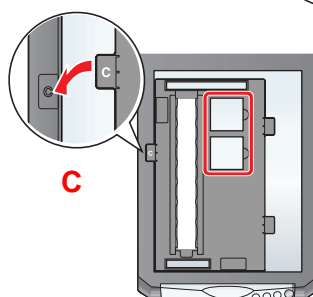
B Negatives

Scans the last 3 frames of the film strip in the 4, 5, and 6 spots on the holder.



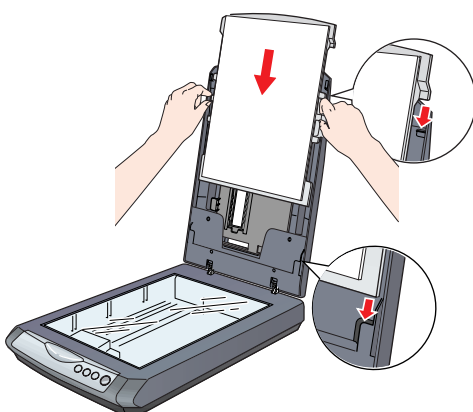
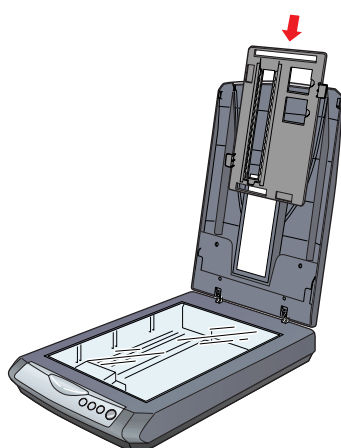
C Slides

Place the holder on the scanner glass, then put the slides in the holder. For a landscape-oriented slide, place the top of the image toward the left. For a portrait-oriented slide, place the top of the image toward the top of the scanner.



Note: Make sure the thin, rectangular calibration windows on both ends of the film holder are uncovered to ensure an accurate scan.

- 4 Close the scanner cover.
- 5 To scan each film frame or slide as a separate image, press the Scan and Save button or open Epson Smart Panel and select **Scan and Save**. This scans each frame or slide using ideal settings in Full Auto Mode and opens each one separately in ArcSoft PhotoImpression for viewing, editing, and printing. See your on-screen *Reference Guide* and Smart Panel help for instructions on selecting scan modes and complete scanning details.
- 6 When you're finished scanning, you can store the film holder in the scanner cover. Slide the film holder into the cover, then replace the document mat.

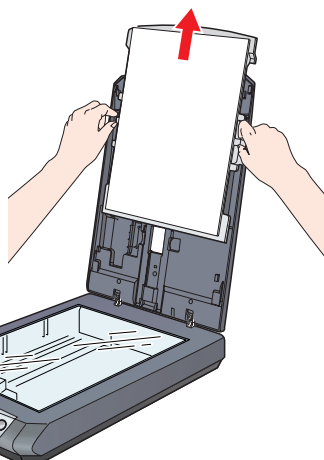


Perfection 2580 Photo

If you have the Perfection 2580 Photo, the top of the cover has an automatic film loader that lets you load 35 mm negatives without even opening the scanner cover. You can use the slide holder to scan a 35 mm slide from the scanner glass.

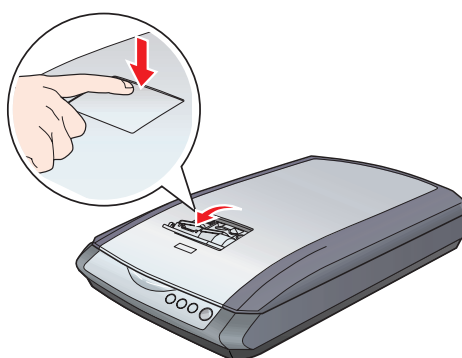
Before scanning negatives or a slide, lift the scanner cover all the way up and slide the reflective document mat up and off of the scanner cover.

Note: Make sure the transparency unit cable is connected to the back of the scanner (see step 4 in “Connect the Scanner”).



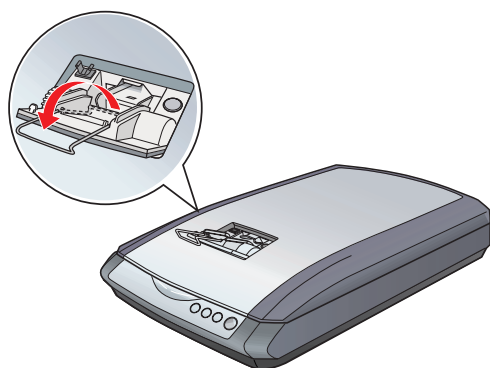
Scanning 35 mm Negatives

- 1 Close the scanner cover.
- 2 Press and release the back of the auto film loader cover to open it.



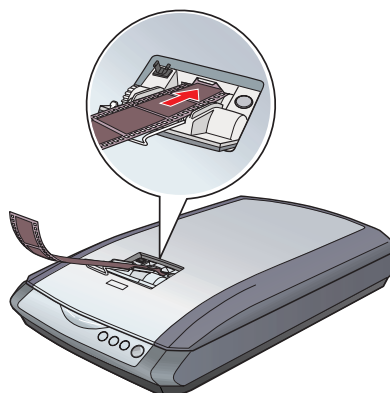
- 3 Flip out the metal film guide and press it down until it clicks into place.



Caution: Before loading a film strip, make sure it contains at least 2 photos, but no more than 6. Don't load folded or creased film into the auto film loader or it may damage the film or your scanner.

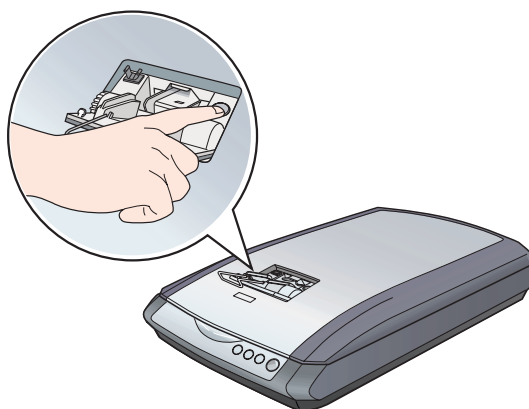


- 4 Place the film strip in the film loader with the shiny base side facing down. Your images and any wording on the film strip should appear backwards on the side that faces up.

Slowly slide the film into the loader. Let go of the film when the scanner begins to automatically feed it into position.



- 5 To scan each frame in your film strip as a separate image, press the  Scan and Save button or open Epson Smart Panel and select **Scan and Save**. This scans each frame using ideal settings in Full Auto Mode and opens each one separately in ArcSoft PhotoImpression for viewing, editing, and printing. See your on-screen *Reference Guide* and Smart Panel help for instructions on selecting scan modes and complete scanning details.
- 6 When you finish scanning the film strip, press the **Eject** button inside the auto film loader to eject the film. Wait for the  Start light to stay on green, then remove the film strip.




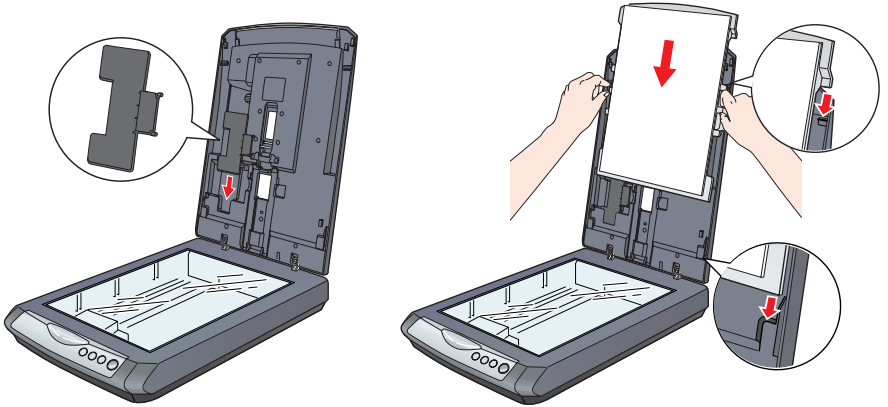
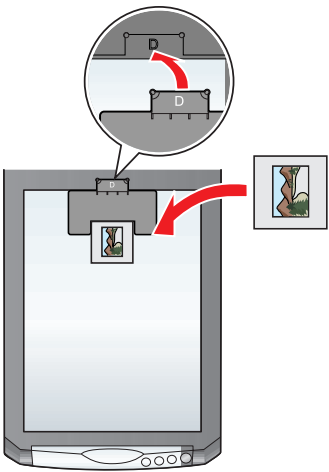
Caution: Don't turn off the scanner with a film strip loaded in the auto film loader. Never pull film out of the loader by force.

- 7 Flip the film guide back inside the auto film loader and press it down until it clicks into place.
- 8 Close the auto film loader cover.
- 9 Replace the document mat before you resume scanning reflective (paper) documents.

Scanning a Slide





- 1 Make sure you removed the reflective document mat, as described in the previous column.
- 2 Place the slide holder on the top of the scanner glass so that the tab labelled “D” fits into the area labelled “D” on the document table.
- 3 Place a 35 mm slide into the holder with its shiny base side facing down. Your image should appear backwards on the side that faces up.

For a landscape-oriented slide, place the top of the image toward the left. For a portrait-oriented slide, place the top of the image toward the top of the scanner.
- 4 Close the scanner cover.
- 5 To scan your slide, press the  Scan and Save button or open Epson Smart Panel and select **Scan and Save**. This scans your slide using ideal settings in Full Auto Mode and opens it in ArcSoft PhotoImpression for viewing, editing, and printing. See your on-screen *Reference Guide* and Smart Panel help for instructions on selecting scan modes and complete scanning details.
- 6 When you're finished scanning, you can store the slide holder in the scanner cover. Slide the slide holder into the cover, then replace the document mat.



Problems?

First check the  Start light on the scanner.

	Flashing green Warming up or scanning.
	Green Ready to scan.
	Flashing red Make sure the transportation lock is unlocked (see section 3). Try restarting your computer and unplugging the scanner. Wait 10 seconds, then plug the scanner back in. Film may be jammed in the auto film loader on the Perfection 2580 Photo. Disconnect the scanner from the computer, wait 10 seconds, and connect it to the computer again to see if the film ejects on its own. If film is still jammed, see your on-screen <i>Reference Guide</i> . If the red light is still flashing, contact your dealer or Epson.
	Off Make sure your scanner is connected to your computer and plugged into a power source, and the scanner software is installed.

If your problem is listed here, try these suggestions.

The New Hardware Wizard appears on your screen.	Click Cancel and follow the steps in section 2 to install your software. Disconnect the scanner before you install.
You see an error message when you try to scan or the scanner doesn't scan.	Make sure your scanner is connected to your computer and plugged into a power source. Make sure the transportation lock is unlocked (see section 3). Uninstall and reinstall Epson Scan. See your on-screen <i>Reference Guide</i> for instructions.
You can't scan negatives or slides.	Make sure the transparency unit cable is connected to the scanner (see section 3) and the reflective document mat is removed. Make sure the Document Type setting and the film holder position are correct for the type of film you're scanning.

Questions?

Here's where to look for answers:

On-Screen Reference Guide

Double-click the **Perf 2480_2580 Reference Guide** icon on your desktop. (If you didn't install the guide, insert the scanner software CD-ROM in the CD-ROM or DVD drive. Click the **Custom** button, select **Scanner Reference Guide**, then click **Install**.)

On-Screen Help for Epson Smart Panel and Epson Scan

Click the **Help** or **?** button that appears on the screen when you're using these programs.

Epson Technical Support

Epson provides technical assistance 24 hours a day through the electronic support services and automated telephone services described below:

- **World Wide Web**
From the Internet, you can reach Epson Support at **http://support.epson.com**.
- **Automated Telephone Services**
To use Automated Telephone Services, you must have a touch tone telephone and call **(800) 922-8911**. Use your Epson SoundAdviceSM Express Code to quickly select your scanner in SoundAdvice.

Perfection 2480 Photo: Use code **70555**

Perfection 2580 Photo: Use code **70560**

- **To Speak to a Customer Service Representative**
Dial **(562) 276-4382** (U.S.) or **(905) 709-3839** (Canada), 6 AM to 6 PM, Pacific Time, Monday to Friday. Toll or long distance charges may apply.

Before you call, please have the following information ready:

- Product name (Perfection 2480 Photo or Perfection 2580 Photo)
- Product serial number (located on the bottom of the scanner)
- Proof of purchase (such as a store receipt) and date of purchase
- Computer configuration
- Description of the problem

Software Technical Support

Software	Telephone*	Internet and E-mail
Epson Scan	U.S.: (562) 276-4382 Canada: (905) 709-3839 6 AM to 6 PM, Pacific Time, Monday to Friday	support.epson.com
Epson Smart Panel	(510) 445-8616	www.newsoftinc.com
Presto! BizCard®	Fax: (510) 445-8601	contactus@newsoftinc.com
ABBYY® FineReader® Sprint	(510) 226-6719 Fax: (510) 226-6069	www.abbyyusa.com support@abbyyusa.com
ArcSoft PhotoImpression	(510) 440-9901 8:30 AM to 5:30 PM, Pacific Time, Monday to Friday	www.arcsoft.com support@arcsoft.com

* Toll or long distance charges may apply.