

Accessories

User Replaceable Parts

Part name	Reference number	Part number
Printer cover	101	1050101
Printer cover support	110	1059610
Paper support assembly, including rear paper support	102	1043087
Logo plate B	115	1051170
Caution label	180	1061183
Model name label	181	1063221
Paper set label	182	1051405
Roll paper adapter	800	1059609
Left roll paper holder	801	1058169
Right roll paper holder	802	1058170
Roll paper stoppers	803	1058171
Uncurling sheet	805	1052356

Ink Cartridges

Cartridge	Part number
Black	U.S.: T007201; Canada: T007311
Color	U.S.: T009201; Canada: T009311

Media

Media name	Size	Part number
EPSON 360 dpi Ink Jet Paper	Letter	S041060
	A4	S041258
	A3	S040165
	Super B	S041066
EPSON High Quality Ink Jet Paper	Letter	S041111
EPSON Photo Quality Ink Jet Paper	Letter	S041062
	Legal	S041067
	A3	S041068
	A4	S041061
	B Super B	S041070 S041069
EPSON Photo Quality Glossy Film	Letter	S041072
	A6	S041107
	A4	S041071
	A3	S041073
	B	S041075
	Super B	S041074
EPSON Photo Paper	Letter (20 sheets)*	S041141
	Letter (100 sheets)*	S041271
	Letter (500 sheets)*	S041272
	4 × 6 inches (perforated)	S041134
	4 × 6 inches (no perforations)*	S041458
	Panoramic	S041145
	A4	S041140
	Roll (3.9 inches × 26.2 ft)*	S041279
Roll (13 inches × 32.8 ft)*	S041233	

Media name	Size	Part number
EPSON Ink Jet Transparencies	Letter A4	S041064 S041063
EPSON Photo Quality Ink Jet Cards	A6	S041054
EPSON Photo Stickers Kit (CD-ROM and paper)	A6, 16 frames per sheet	S041144-KIT
EPSON Photo Stickers (refill, paper only)	A6, 16 frames per sheet	S041144
EPSON Iron-On Cool Peel Transfer Paper	Letter (10 sheets) Letter (50 sheets)	S041153 S041155
EPSON Photo Quality Self Adhesive Sheets	A4	S041106
Matte Paper - Heavyweight	Letter* A4 8 × 10 inches* 11 × 14 inches*	S041257 S041258 S041467 S041468
EPSON Premium Glossy Photo Paper	Letter* 5 × 7 inches* A4 8 × 10 inches* 11 × 14 inches* Roll (3.9 inches × 26.2 feet)* Roll (8.3 inches × 26.2 feet) Roll (13 inches × 32.8 feet)*	S041286 S041464 S041285 S041465 S041466 S041302 S041376 S041378
EPSON Premium Semigloss Photo Paper	Letter* Super B A4 Roll (3.9 inches × 26.2 feet)*	S041286 S041327 S041332 S041329
EPSON Premium Luster Photo Paper	Letter* A3 Super B Roll (8.3 inches × 26.2 feet) Super B Roll (13 inches × 32.8 feet)*	S041405 S041406 S041407 S041408 S041409
EPSON Glossy Photo Greeting Cards	Letter*	S041267

* Supports true BorderFree™ (borderless) printing

Printer Specifications

Printing

Printing method On-demand ink jet

Nozzle configuration

Black 48 nozzles
Color 240 nozzles (48 each: cyan, magenta, yellow, light cyan, light magenta)

Resolution Maximum 2880 dpi × 720 dpi

Print direction Bidirectional with logic seeking

Control code ESC/P Raster,™ EPSON Remote

Input buffer 256KB

Interface USB or IEEE 1284-compatible parallel

Mechanical

Paper feed method Friction

Paper path Sheet feeder, rear entry

Sheet feeder capacity 100 sheets of 17 lb (64 g/m²) paper

Dimensions

Storage
Width: 23.6 inches (609 mm)
Depth: 12.2 inches (311 mm)
Height: 6.9 inches (175 mm)

Printing
Width: 23.6 inches (609 mm)
Depth: 30.2 inches (766 mm)
Height: 16.3 inches (414 mm)

Weight 18.5 lb (8.4 kg) without the ink cartridges

Acoustic noise 42 dB

Electrical

Specification	120 V Model	220–240 V Model
Input voltage range*	99 to 132 V	198 to 264 V
Rated frequency range	50 to 60 Hz	
Input frequency range	49.5 to 60.5 Hz	
Rated current	0.4 A	0.2 A
Power consumption	Approx. 15 W (ISO/IEC 10561 Letter Pattern) Approx. 3 W in standby mode	

* Check the label on the back of the printer for your printer's voltage.

Environmental

Temperature

Operation	50 to 95 °F (10 to 35 °C)
Storage*	-4 to 104 °F (-20 to 40 °C) 1 month at 104 °F (40 °C)
Transit*	-4 to 140 °F (-20 to 60 °C) 120 hours at 140 °F (60 °C)

Humidity (without condensation)

Operation	20 to 80% RH
Storage*	5 to 85% RH

*Stored in shipping container

Safety Approvals

Safety standards	UL 1950, CSA C22.2 No. 950
EMC	FCC part 15 subpart B class B

Ink Cartridges

Specification	Black ink cartridge (T007201)	Color ink cartridge (T009201)
Color(s)	Black	Cyan, Magenta, Yellow, Light Cyan, Light Magenta
Print capacity*	540 pages (3.5% ECMA at 360 dpi, 370 pages 5% in calculation)	330 pages (5% each color CcMmY [total 25%] in calculation)
Cartridge life	2 years from production date (if unopened) (within 6 months after opening package, at 77 °F [25 °C])	
Storage temperature	-4 to 104 °F (-20 to 40 °C) 1 month at 104 °F (40 °C)	
Transit temperature	-22 to 140 °F (-30 to 60 °C) 1 month at 104 °F (40 °C) 120 hours at 140 °F (60 °C)	
Freezing temperature**	3.2 °F (-16 °C)	-0.4 °F (-18 °C)
Dimensions (W × D × H)	0.8 × 2.6 × 1.5 inches 20.1 × 66.85 × 38.5 mm	1.9 × 3.3 × 1.6 inches 49.1 × 84.05 × 41.8 mm

* The figure given is based on continuous printing after ink replacement. The actual print capacity may vary, depending on how often you turn on the printer and clean the print head.

** Ink thaws and is usable after approximately 3 hours at 77 °F (25 °C).



To ensure good results, use genuine EPSON cartridges and do not refill them. Other products may cause damage to your printer not covered by EPSON's warranties.

Don't use an ink cartridge if the date on the package has expired.

Paper

Paper type	Size	Paper types	Thickness	Weight
Single sheets	Letter (8.5 × 11 inches) Legal (8.5 × 14 inches) Half letter (statement, 5.5 × 8.5 inches) Executive (7.5 × 10 inches) A4 (210 × 297 mm) A5 (148 × 210 mm) A3 (297 × 420 mm) B (11 × 17 inches) Super B (13 × 19 inches)	Plain bond paper and special ink jet papers distributed by EPSON	0.003 to 0.004 inch (0.08 to 0.11 mm) for plain bond paper	17 to 24 lb (64 to 90 g/m ²) for plain bond paper
Transparencies and Photo Quality Glossy Film	Letter (8.5 × 11 inches) A3 (297 × 420 mm) A4 (210 × 297 mm) A6 (105 × 148 mm), glossy film only B (11 × 17 inches), glossy film only Super B (13 × 19 inches), glossy film only	Transparencies and glossy film distributed by EPSON	—	—
Premium Glossy Photo Paper	Letter (8.5 × 11 inches) 5 × 7 inches A4 (210 × 297 mm) 8 × 10 inches 11 × 14 inches Roll (3.9 inches × 26.2 feet) Roll (8.3 inches × 26.2 feet) Roll (13 inches × 32.8 feet)	Premium Glossy Photo Paper distributed by EPSON	—	—
Matte Paper - Heavyweight	Letter (8.5 × 11 inches) A4 (210 × 297 mm) 8 × 10 inches 11 × 14 inches	Matte paper distributed by EPSON	—	—
Self-adhesive sheets	A4 (210 × 297 mm)	EPSON Self-adhesive sheets	—	—
Envelopes	No. 10, 4.1 × 9.5 inches (104 × 241 mm) DL, 4.3 × 8.7 inches (110 × 220 mm) C6, 4.4 × 6.4 inches (114 × 162 mm) 132 × 220 mm (5.2 × 8.7 inches)	Plain, bond, or air mail paper	0.006 to 0.02 inch (0.16 to 0.52 mm)	12 to 20 lb (45 to 75 g/m ²)
Index (ink jet) cards	A6 (105 × 148 mm)	Ink jet cards distributed by EPSON	—	—
Photo Paper	Letter (8.5 × 11 inches) A4 (210 × 297 mm) 4 × 6 inches (102 × 152 mm) Panoramic (8.3 × 23.4 inches) Roll (3.9 inches × 26.2 feet) Roll (13 inches × 32.8 ft)	Photo paper distributed by EPSON	—	—
Photo Stickers	A6 (105 × 148 mm), 16 frames/sheet	Photo stickers distributed by EPSON	—	—
Iron-On Cool Peel Transfer Paper	Letter (8.5 × 11 inches)	Transfer paper distributed by EPSON	—	—

Note:

Always load paper into the sheet feeder short edge first, except for envelopes. Load envelopes flap edge first with the flap side down.

Since the quality of any particular brand or type of paper may be changed by the manufacturer at any time, EPSON cannot attest to the quality of any non-EPSON brand or type of paper. Always test samples of paper stock before purchasing large quantities or printing large jobs.

Poor quality paper may reduce print quality and cause paper jams and other problems. If you encounter problems, switch to a higher grade of paper. Do not load curled or folded paper.

Use papers under these conditions:

Temperature: 59 to 77 °F (15 to 25 °C)

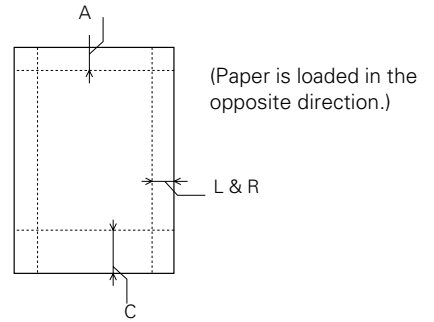
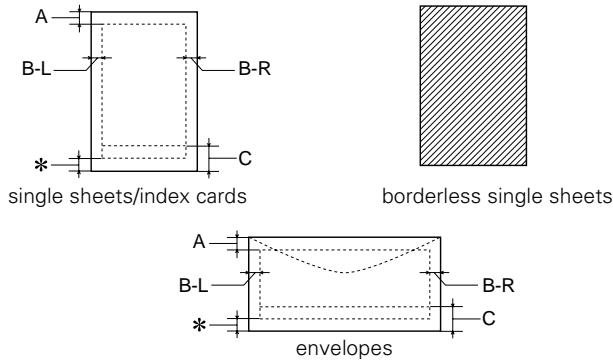
Humidity: 40 to 60% RH

Store printouts on EPSON Photo Quality Glossy Film and Self Adhesive Sheets under these conditions:

Temperature: 59 to 86 °F (15 to 30 °C)

Humidity: 20 to 60% RH

Printable area



EPSON 4 × 6-inch Photo Paper* with perforations (dotted lines indicate perforations)

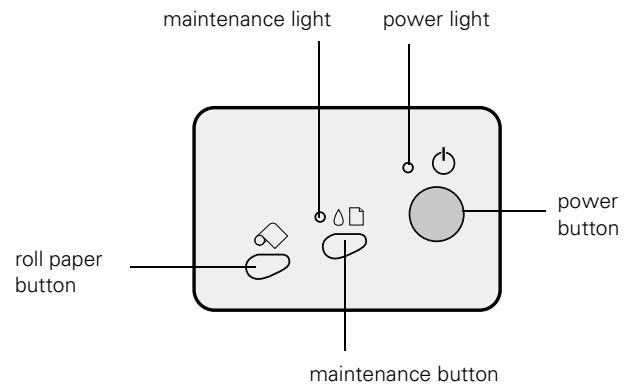
- A: For envelopes, index cards, and sheets printed with borders, the minimum top margin is 0.12 inch (3.0 mm).
- B-L: The minimum left margin for envelopes, index cards, and sheets printed with borders is 0.12 inch (3.0 mm).
- B-R: The minimum right margin is 0.12 inch (3.0 mm) for index cards and single sheets with borders; 0.28 inch (7.0 mm) for DL envelopes; 1.10 inch (28.0 mm) for No. 10 envelopes.
- C: The minimum bottom margin for envelopes, index cards, and single sheets with borders is 0.55 inch (14.0 mm).

- A: The maximum top margin is 0.24 inch (6.1 mm).
- L & R: The maximum left and right margin is 0.24 inch (6.1 mm). The minimum left and right margin is 0.12 inch (3.0 mm).
- C: The maximum bottom margin is 0.67 inch (17.0 mm).

* You can reduce the minimum bottom margin to 0.12 inch (3.0 mm) by selecting Maximum as the Printable Area setting. However, print quality may decline or ink may smear in the expanded area, depending on the media. Before printing large jobs, print a single sheet to confirm print quality.

* EPSON 4 × 6-inch Photo Paper (perforated) is 4.5 × 6.9 inches (114 × 175 mm), including the perforated margins. The printable area is 4 × 6 inches (102 × 152 mm).

Control Panel



The following table explains the control panel lights:

<p>⏻ is on or flashes</p>	<p>The ⏻ power light is on when the printer is on and ready to print. It flashes when the printer is receiving a print job, charging ink, or cleaning the print head. It also flashes when the print head moves to the ink cartridge replacement position</p>
<p>⚠ is on and ⏻ flashes</p>	<p>When the ⚠ maintenance light comes on and the ⏻ power light flashes, paper is out or loaded incorrectly, or you have a paper jam. If paper is out or loaded incorrectly, load or reload your paper. Then press the ⚠ maintenance button to turn off the ⚠ maintenance light and resume printing. (If you're printing on roll paper, press the ⚠ maintenance button to turn off the ⚠ maintenance light, and then press the ⏪ roll paper button to resume printing.) If paper is jammed, do one of the following:</p> <ul style="list-style-type: none"> ❑ If you're printing on any type of media but roll paper, press the ⚠ maintenance button to try to clear the jam. If that doesn't work, turn off the printer and gently pull the paper forward (toward the output tray) to pull it out. Then turn on the printer and press the ⚠ maintenance button to turn off the ⚠ maintenance light and resume printing. ❑ If you're printing on roll paper, press the ⏪ roll paper button for at least three seconds to clear the jam. (You may have to repeat this step more than once to back the paper out completely.) If that doesn't work, turn the printer off and trim the roll at a point a few inches after it exits the printer. Gently pull the roll backward, taking care not to force the printer mechanism.
<p>⏻ and ⚠ flash</p>	<p>When both the lights flash, one of the ink cartridges is low on ink. To find out which one, do the following: Windows: Check the ink level graphic in the printer software. Macintosh: Check the EPSON Monitor 3 utility. Then replace the ink cartridge as described on page 8.</p>
<p>⚠ and ⏻ are on</p>	<p>When both lights are on, one of the ink cartridges is out of ink. Determine which cartridge is empty by checking the ink level graphic in the printer software (Windows) or the EPSON Monitor 3 utility (Macintosh). Then replace the cartridge as described on page 8. If both lights come on after you've replaced a cartridge, you may have installed a cartridge your printer can't use.</p>
<p>⚠ is on and ⏻ is off</p>	<p>Jammed paper may be blocking movement of the print head, or you may have an internal error. Turn off the printer, open the cover, and check for any jammed paper. Also, make sure you removed all the packing material, as described on the <i>Start Here</i> poster. Then turn the printer back on.</p>

<p>⏻ and ⚠ are off</p>	<p>When both lights are off, the printer is not receiving power. Try these solutions:</p> <ul style="list-style-type: none"> ❑ Make sure the printer is turned on. ❑ Turn off the printer, plug in the power cord securely, and turn on the printer again. ❑ Make sure the outlet is working and is not controlled by a switch or timer.
------------------------	---

Installing an Ink Cartridge for the First Time



Follow these ink cartridge precautions and the others in the *Printer Basics* book:

- ❑ Install both ink cartridges, and leave them installed for all types of printing, or the printer won't work.
- ❑ Remove the yellow tape seal from the top of the ink cartridges or you'll permanently damage them. Don't remove the clear seals on the bottom or ink will leak out.
- ❑ Don't touch the green chip on the back of the cartridge. This may inhibit normal operation and printing.
- ❑ Never turn off the printer when the ⏻ power light is flashing, unless the printer hasn't moved or made any noise for more than five minutes.



Keep ink cartridges out of the reach of children and do not drink the ink.

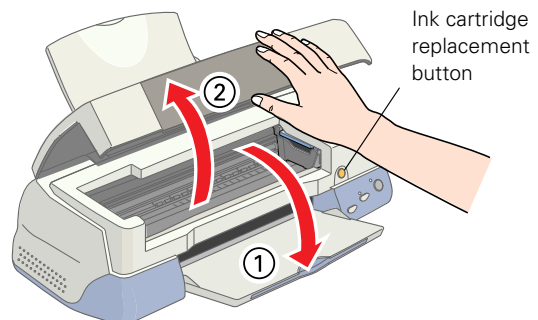
If ink gets on your skin, wash the area thoroughly with soap and water. If ink gets in your eyes, flush them immediately with water.

1. Plug the printer into an electrical outlet and turn it on. The ink cartridges move into the loading position.

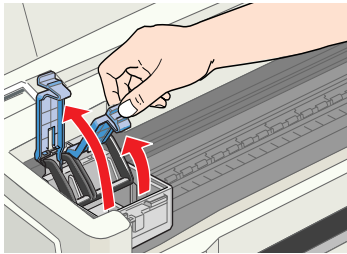


If the ink cartridges fail to move to the loading position, press the ink cartridge replacement button, shown below.

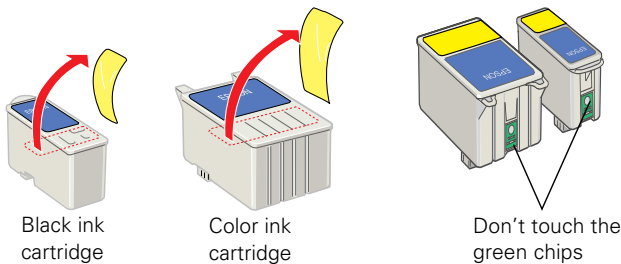
2. Lower the output tray and open the cover.



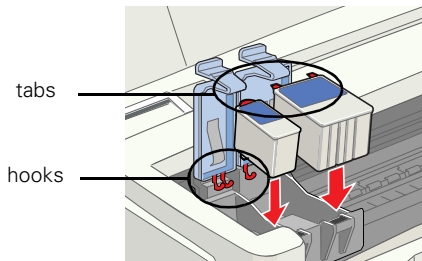
- Lift up the two ink cartridge clamps.



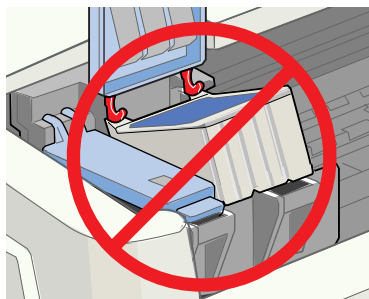
- Unwrap the ink cartridges, then remove only the yellow part of the tape seal on top. **Don't pull off the blue part.**



- As you face the printer, tilt each cartridge forward (toward you) slightly as you lower it into its holder. Position the tabs at the back of the cartridge on top of the hooks on the holder clamps.



Don't place the cartridges *under* the holder clamp; you may damage the clamp when you close it.



- Close the ink cartridge clamps. (You need to press the color clamp a little more firmly.)

- Press the ink cartridge replacement button (shown in step 2) and close the printer cover.

Ink charging takes about two minutes, with the power light flashing and the printer making noise until it's finished. Don't turn off the printer or interrupt charging or it will start over, using more ink than necessary. It's finished when the power light stops flashing.

Testing the Printer

You can run a printer check to determine whether a problem comes from the printer itself or some other source. Follow these steps to run the printer check:

- Make sure both the printer and computer are turned off.
- Disconnect the interface cable from the printer.
- Make sure letter-size or larger paper is loaded in the printer.
- Hold down the maintenance button, then press and release the power button. Continue holding down the maintenance button until the power light starts to flash, then release it.

The printer prints one page showing its ROM version number, ink counter, and a nozzle check pattern. Only the nozzle check pattern is shown below. (If the pattern has gaps in its dots, you need to clean the print head; see page 10.)



- To end the check, turn off the printer after it prints the check page. Then reconnect the interface cable and turn on your printer and computer.

If the check page prints, the problem probably lies in your software settings, the interface cable, or your computer.

If the check page doesn't print, you may have a problem with your printer.

Try the suggestions in "Problems and Solutions" in the *Printer Basics* book.

Printing on Special Media

Follow the guidelines in the table below when selecting the Media Type setting for your paper:

For this paper name...	Select this Media Type setting
Plain paper and envelopes	Plain paper
EPSON 360 dpi Ink Jet Paper EPSON Iron-On Cool Peel Transfer Paper	360 dpi Ink Jet Paper
EPSON High Quality Ink Jet Paper EPSON Photo Quality Ink Jet Paper EPSON Photo Quality Ink Jet Cards EPSON Photo Quality Self Adhesive Sheets	Photo Quality Ink Jet Paper
EPSON Matte Paper - Heavyweight	Matte Paper - Heavyweight
EPSON Photo Paper	Photo Paper
EPSON Premium Glossy Photo Paper EPSON Premium Semigloss Photo Paper EPSON Premium Luster Photo Paper	Premium Glossy Photo Paper
EPSON Photo Quality Glossy Film EPSON Photo Stickers	Photo Quality Glossy Film
EPSON Ink Jet Transparencies	Ink Jet Transparencies
EPSON Photo Quality Glossy Film EPSON Photo Stickers	Photo Quality Glossy Film
EPSON Ink Jet Transparencies	Ink Jet Transparencies

Additional Media Loading Guidelines




Don't use the cleaning sheets that may be included with your special media; they may damage the printer.

- Be sure to load the printable (whiter) side of the media face up in the sheet feeder.
- You can load paper up to the arrow mark on the left edge guide.
- In addition to the **Media Type** option, remember to select the correct **Paper Size** for your media in the printer software.
- If the special media has protective sheets between each sheet of media, be sure to remove the protective sheets before printing.
- Some special media have a cut corner that you need to position correctly; follow any instructions in the package. Always handle sheets by the edges, and don't touch the printable surface.

Replacing an Ink Cartridge

When the ⚙ maintenance and ⏻ power lights are both flashing, one of your ink cartridges is low on ink. This is a good time to make sure you have a new cartridge. When both lights stay on, a cartridge is empty and you need to replace it.

When an installed ink cartridge is more than six months old, you may also need to replace it if you notice that your printouts don't look as good as they used to. If print quality doesn't improve after cleaning and aligning the print head, you can replace the cartridge even if the ⚙ maintenance and ⏻ power lights aren't flashing.

To check the level of ink you have left, see the graphic in the printer driver (Windows) or click the  ink level icon in the printer driver or EPSON Monitor 3 utility (Macintosh).

You can also check the flash pattern of the control panel lights to determine which cartridge is low or empty. Press the ink cartridge replacement button. If the ⏻ power and ⚙ maintenance lights flash at the same speed, replace the black cartridge. If the ⚙ maintenance light flashes twice as fast as the ⏻ power light, replace the color cartridge.



You cannot print if either ink cartridge is empty. Leave the empty cartridge installed in the printer until you have obtained a replacement. Otherwise the ink remaining in the print head nozzles may dry out.

Use these EPSON ink cartridges within six months of installing them and before the expiration date on the package:

- Black ink cartridge: T007201
- Color ink cartridge: T009201



To ensure good results, use genuine EPSON ink cartridges and do not refill them. Other products may cause damage to your printer not covered by EPSON's warranty.

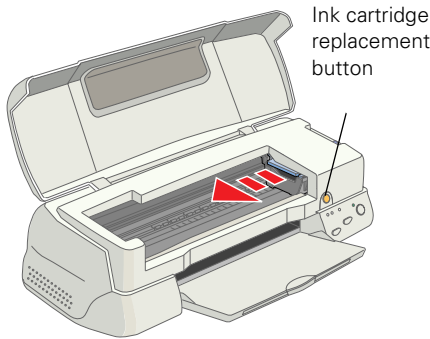
When you need new ink cartridges, contact your dealer or call the EPSON Store™ at (800) 873-7766 or visit the EPSON Store at www.epsonstore.com (U.S. sales only). In Canada, please call (800) 873-7766 for dealer referral.

Be sure you have a new ink cartridge before you begin. Once you start the ink cartridge replacement procedure, you must complete all the steps in one session.

Follow these steps to replace ink cartridges:

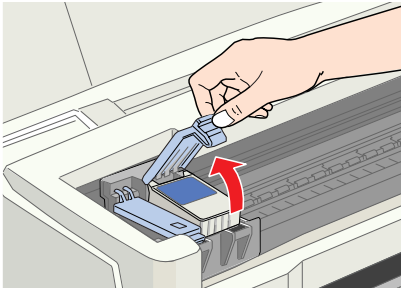
1. Make sure the printer is turned on and not printing (the ⏻ power light should be on, but not flashing).

- Open the printer cover and press the yellow ink cartridge replacement button. The print head moves left and the power light begins flashing.

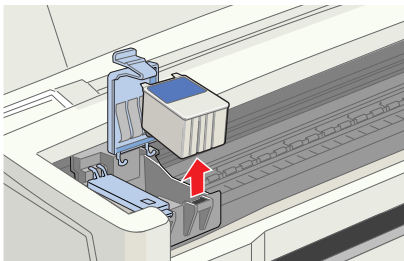


To avoid damaging the printer, never move the print head by hand.

- The color cartridge is on the right and the black cartridge is on the left. Pull up the ink cartridge clamp all the way. The cartridge rises up from its holder.



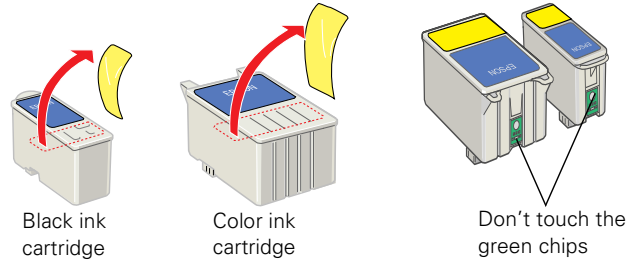
- Lift the cartridge out of the printer and dispose of it carefully.



Keep ink cartridges out of the reach of children and do not drink the ink.

If ink gets on your skin, wash the area thoroughly with soap and water. If ink gets in your eyes, flush them immediately with water.

- Unwrap the new ink cartridge, then remove only the yellow part of the tape seal on top. **Don't pull off the blue part.**

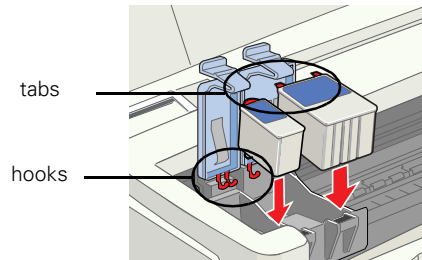


You must remove the yellow tape from the top of the cartridge or you will permanently damage it. Don't pull off the blue portion or try to remove the clear seal underneath the cartridge.

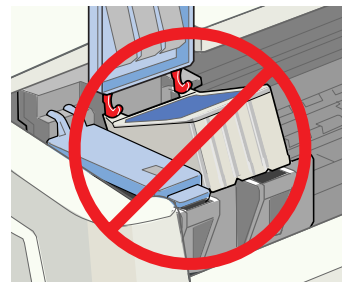
Don't touch the green circuit board on the back of the cartridge; you may inhibit normal operation and printing.

- As you face the printer, tilt the ink cartridge forward (toward you) slightly as you lower it into its holder.

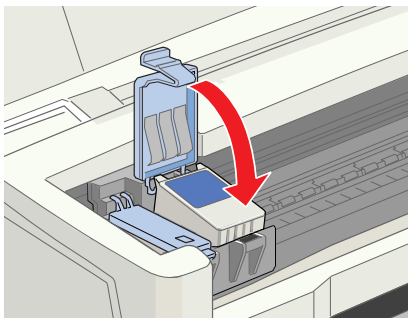
Position the tabs at the back of the cartridge on top of the hooks on the holder clamps.




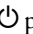
Don't place the cartridge tabs *under* the hooks on the holder clamp; you may damage the clamp when you close it.



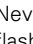
- Press down on the ink cartridge clamp until it locks in place. (You may have to press a little more firmly on the color clamp.)



- If you need to replace the other ink cartridge, repeat steps 3 through 7 before continuing with step 9.
- Press the ink cartridge replacement button and close the printer cover. The printer moves the print head and begins charging the ink delivery system.

The  power light flashes, and the printer makes noise. Charging takes about one minute. When it's finished, the  power light stops flashing and stays on.



Never turn off the printer while the  power light is flashing, unless the printer hasn't moved or made noise for more than 5 minutes.

Cleaning the Print Head

If your printed image is unexpectedly light or faint, or dots are missing from the image, you may need to clean the print head. This unclogs the nozzles so they can deliver ink properly.

Cleaning the print head uses ink, so clean it only if print quality declines. You can clean the print head in either of the following ways:

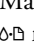
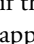
- Using the Head Cleaning utility (when the printer is connected to a local port, not over a network)
- Using the printer's control panel buttons




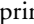
When you don't turn on your printer for a long time, the print quality can decline. It's a good idea to turn on your printer at least once a month to maintain good print quality.

Using the Head Cleaning Utility


Follow these steps to run the Head Cleaning utility (recommended method):


- Make sure the printer is turned on but not printing, and the  maintenance light is off. (You can't clean the print head if the  maintenance light is flashing or on. Replace the appropriate ink cartridge instead.)
- If you have an application running, access the printer settings dialog box.

Or, with Windows, click **Start**, point to **Settings**, then select **Printers**. Right-click your **EPSON Stylus Photo 1280** printer icon in the **Printers** window. Then select **Properties (Document Defaults in Windows NT)**.

- Windows:** Click the **Utility** tab.
Macintosh: Click the  Utility button.
- On the Utility menu, click the **Head Cleaning** button.
- Follow the instructions on the screen to clean the print head. Cleaning takes about 30 seconds, during which the printer makes some noise and the  power light flashes.



Never turn off the printer while the  power light is flashing, unless the printer hasn't moved or made noise for more than 5 minutes.

- When the  power light stops flashing, run a nozzle check to confirm the print head nozzles are clean.

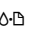

Make sure paper is loaded in the printer and click **Print nozzle check pattern (Windows)** or **Confirmation (Macintosh)**. Then click **Next**. The nozzle check pattern prints. (See page 11 for details.)

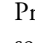
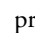
- If the nozzle check pattern has no gaps in its dots, click **Finish**.

If the pattern is missing dots, click **Clean** to clean the print head again. If you don't see any improvement after cleaning three or four times, check the solutions in the *Printer Basics* book. You can also turn the printer off and wait overnight—this allows any dried ink to soften—and then try cleaning the print head again.

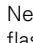
Using the Control Panel to Clean the Print Head

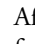
Follow these steps to clean the print head:

- Make sure the printer is turned on but not printing, and the  maintenance light is off. (If the  maintenance light is on or flashing, replace the appropriate ink cartridge instead.)

- Press the  maintenance button and hold it down for three seconds. Cleaning takes about 30 seconds, during which the printer makes some noise and the  power light flashes.



Never turn off the printer while the  power light is flashing, unless the printer hasn't moved or made noise for more than 5 minutes.

- After the  power light stops flashing, do one of the following:

If your printer is connected directly to the computer, go to step 4 to run a nozzle check.

If you're printing over a network, open an application and print a short document containing black and color data. Check the quality of your printout, then go to step 8.

- If you have an application running, access the printer settings dialog box.

Or, with Windows, click **Start**, point to **Settings**, then select **Printers**. Right-click your EPSON Stylus Photo 1280 printer icon in the Printers window. Then select **Properties (Document Defaults in Windows NT)**.

- Windows:** Click the **Utility** tab.

Macintosh: Click the  Utility button.

- Make sure paper is loaded in the printer, click the **Nozzle Check** button, and click **Next**. The nozzle check pattern prints. (See the next section for details.)
- If the nozzle check pattern has no gaps in its dots, click **Finish**.

If the pattern is missing dots, click **Clean** to clean the print head again.

- If you don't see any improvement after cleaning three or four times, check the solutions in the *Printer Basics* book. You can also turn the printer off and wait overnight—this allows any dried ink to soften—and then try cleaning the print head again.

Examining the Nozzle Check Pattern

Examine the nozzle check pattern you print. It should look something like this:



Each staggered horizontal and straight vertical line should be complete, with no gaps in the dot pattern. If your printout looks okay, you're done. If any dots are missing, as shown below, clean the print head again; see page 10 for instructions.



Aligning the Print Head


If your printouts contain misaligned vertical lines, you may need to align the print head. Your printer must be connected to a local port, not on a network, to use the Print Head Alignment utility. Follow these steps:

- Make sure the printer is turned on but not printing, and letter-size paper is loaded.



Load letter or A4-size paper to print the entire bidirectional pattern.

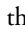
For the best results, load EPSON ink jet paper in the printer whenever you check the print head alignment.

- If you have an application running, access the printer settings dialog box.
Or, with Windows, click **Start**, point to **Settings**, then select **Printers**. Right-click the EPSON Stylus Photo 1280 icon in the Printers window. Select **Properties (Document Defaults in Windows NT)**.
- Windows:** Click the **Utility** tab.
Macintosh: Click the  Utility button.
- You see the Utility menu. Click the **Print Head Alignment** button.
- Follow the instructions on the screen to print a test page.
- Select the best line from the first group of lines on the printout, then enter its number in box #1 on screen. Select the line with the cleanest, straightest edges. Then choose the best line in the second group and enter its number in box #2 on screen.

7. If you want to check the results, click **Realignment** to print another test page. Make sure the middle line (numbered 8) in each group is the best. If it isn't, you may need to repeat step 6 more than once to align your print head completely.
8. Click **Next** and follow the instructions on the screen to print two columns of boxes.
9. Select the box with the least grainy appearance (smoothest gray) from the first column, then enter its number in box #1 on screen. Then choose the best box from the second column and enter its number in box #2 on screen.
10. If you want to check the results, click **Realignment** to reprint the boxes. Make sure the middle box (numbered 5) in each column is the best. If it isn't, you may need to repeat step 9 more than once.
11. When done, click **Finish**.

Cleaning the Printer

To keep your printer working at its best, you should clean it several times a year. Follow these steps:

1. Turn off the printer and wait for the  power light to go out.
2. Unplug the power cord and disconnect the printer cable.
3. Remove all the paper from the sheet feeder.
4. Clean the exterior of the printer with a soft, damp cloth.



Don't touch the gears inside the printer.

Never use a hard or abrasive brush, or alcohol or thinner for cleaning; they can damage the printer components and case.

Don't get water on the printer components and don't spray lubricants or oils inside the printer.

Transporting the Printer

If you move your printer some distance, you need to prepare it for transportation in its original box or one of a similar size.



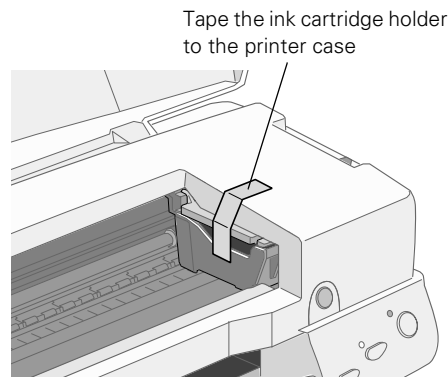
To avoid damage, always leave the ink cartridges installed when transporting the printer.

Be sure to remove the tape used in step 4 after installing the printer in its new location.

Follow these steps:

1. Turn on the printer, wait until the print head locks in the far right position, then turn off the printer.

2. Unplug the power cord from the electrical outlet. Then disconnect the printer cable from the printer.
3. Remove any paper from the printer and remove the paper support.
4. Open the printer cover. Secure the ink cartridge holder to the printer with tape as shown, then close the printer cover.



5. Push in the output tray extensions and close the tray.
6. Repack the printer and attachments in the original box using the protective materials that came with it. See the *Start Here* poster for details.

Be sure to keep the printer level as you transport it.

After transporting the printer, remove the tape securing the print head and test your printer. If you notice a decline in print quality, clean the print head (see page 10); if output is misaligned, align the print head (see page 11).

Related Documentation

TM-890/1280	EPSON Stylus Photo 890/1280 Service Manual
PL-SP1280	EPSON Stylus Photo 1280 Parts Price List
CPD-11716	EPSON Stylus Photo 890/1280 <i>Printer Basics</i>
CPD-11717	EPSON Stylus Photo 890/1280 <i>Start Here</i>
CPD-11718	EPSON Stylus Photo 1280 printer software CD-ROM