

Media

Media name	Size	Part number
EPSON Archival Matte Paper	Letter (8 1/2 x 11 inches)	S041341
	A3 (11.7 x 16.5 inches)	S041343
	Super B (13 x 19 inches)	S041339
EPSON Watercolor Paper - Radiant White	Super B (13 x 19 inches)	S041351
EPSON Premium Semigloss Photo Paper	Letter (8 1/2 x 11 inches)	S041331
	Super B (13 x 19 inches)	S041327
	4 inch x 26 ft roll	S041329
EPSON Premium Luster Photo Paper	Letter (8 1/2 x 11 inches)	S041405
	A3 (11.7 x 16.5 inches)	S041406
	Super B (13 x 19 inches)	S041407
	8.3 inch x 32.8 ft roll	S041408
	13.0 inch x 32.8 ft roll	S041409

Printer Specifications

Printing

Printing method On-demand ink jet

Nozzle configuration

Black 48 nozzles
 Color 240 nozzles (48 each: cyan, magenta, yellow, light cyan, light magenta)

Resolution Maximum 1440 dpi x 720 dpi

Print direction Bidirectional with logic seeking

Control code ESC/P Raster,™ EPSON Remote

Input buffer 256KB

Accessories

User Replaceable Parts

Part name	Reference number	Part number
Cover assembly	101	1053994
Paper support	102	1054449
Logo plate	115	1056022
Cover support	110	1053995

Ink Cartridges

Cartridge	Part number
Black	U.S. and Latin America: T015201; Canada: T015311
Color	U.S. and Latin America: T016201; Canada: T016311

Ink Cartridges

Specification	Black ink cartridge (U.S./Latin America: T015201; Canada: T015311)	Color ink cartridge (U.S./Latin America: T016201; Canada: T016311)
Color(s)	Black	Cyan, Magenta, Yellow, Light Cyan, Light Magenta
Print capacity*	510 pages (A4, text at 360 dpi, 3.5% coverage), 350 pages (graphics, 5% coverage)	250 pages (A4, 360 dpi, 5% duty each color)
Cartridge life	18 months from production date (if unopened) (within 6 months after opening package, at 77 °F [25 °C])	
Storage temperature	-4 to 104 °F (-20 to 40 °C) 1 month at 104 °F (40 °C)	
Transit temperature	-22 to 140 °F (-30 to 60 °C) 1 month at 104 °F (40 °C) 120 hours at 140 °F (60 °C)	
Freezing temperature**	3.2 °F (-16 °C)	-0.4 °F (-18 °C)
Dimensions	0.8 × 2.6 × 1.5 inches (W × D × H) 20.1 × 66.9 × 38.5 mm (W × D × H)	1.9 × 3.3 × 1.6 inches (W × D × H) 49.1 × 84.0 × 41.8 mm (W × D × H)

* The figure given is based on continuous printing after ink replacement. The actual print capacity may vary, depending on how often you turn on the printer and clean the print head.

** Ink thaws and is usable after approximately 3 hours at 77 °F (25 °C).



To ensure good results, use genuine EPSON cartridges and do not refill them. Other products may cause damage to your printer not covered by EPSON's warranties.

Don't use an ink cartridge if the date on the package has expired.

Mechanical

Paper feed method	Friction
Paper path	Sheet feeder, rear entry
Sheet feeder capacity	50 sheets of 17 lb (64 g/m ²) paper
Dimensions	
Storage	Width: 23.6 inches (609 mm) Depth: 12.2 inches (311 mm) Height: 6.9 inches (175 mm)
Printing	Width: 23.6 inches (609 mm) Depth: 30.2 inches (766 mm) Height: 16.3 inches (414 mm)
Weight	17.6 lb (8.4 kg) without the ink cartridges

Electrical

Specification	120 V Model	220-240 V Model
Input voltage range*	99 to 132 V	198 to 264 V
Rated frequency range	50 to 60 Hz	
Input frequency range	49.5 to 60.5 Hz	
Rated current	0.4 A	0.2 A
Power consumption	Approx. 18 W (ISO 10561 Letter Pattern) Approx. 3.5 W in standby mode	

* Check the label on the back of the printer for your printer's voltage.

Environmental

Temperature	
Operation	50 to 95 °F (10 to 35 °C)
Storage*	-4 to 104 °F (-20 to 40 °C) 1 month at 104 °F (40 °C)
Transit*	-4 to 140 °F (-20 to 60 °C) 120 hours at 140 °F (60 °C)

Humidity (without condensation)

Operation	20 to 80% RH
Storage*	5 to 85% RH

*Stored in shipping container

Safety Approvals

Safety standards	UL 1950, CSA C22.2 No. 950
EMC	FCC part 15 subpart B class B

Paper

Paper type	Size	Paper types	Thickness	Weight
Single sheets	Letter (8.5 × 11 inches) Legal (8.5 × 14 inches) Half letter (statement, 5.5 × 8.5 inches) Executive (7.5 × 10 inches) A4 (210 × 297 mm) A5 (148 × 210 mm) A3 (11.7 × 16.5 inches) B (11 × 17 inches) Super B (13 × 19 inches)	Plain bond paper and special papers distributed by EPSON	0.003 to 0.004 inch (0.08 to 0.11 mm) for plain bond paper	17 to 24 lb (64 to 90 g/m ²) for plain bond paper
EPSON Archival Matte Paper	Letter (8 1/2 × 11 inches) A3 (11.7 × 16.5 inches) Super B (13 × 19 inches)	Special papers distributed by EPSON	—	—
EPSON Watercolor Paper - Radiant White	Super B (13 × 19 inches)	Special papers distributed by EPSON	—	—
EPSON Premium Semigloss Photo Paper	Letter (8 1/2 × 11 inches) Super B (13 × 19 inches) 4 inch × 26 ft roll	Special papers distributed by EPSON	—	—
EPSON Premium Luster Photo Paper	Letter (8 1/2 × 11 inches) A3 (11.7 × 16.5 inches) Super B (13 × 19 inches) 8.3 inch × 32.8 ft roll 13.0 inch × 32.8 ft roll	Special papers distributed by EPSON	—	—
Envelopes	No. 10, 4.1 × 9.5 inches (104 × 241 mm) DL, 4.3 × 8.7 inches (110 × 220 mm) C6, 4.4 × 6.4 inches (114 × 162 mm)	Plain, bond, or air mail paper	0.006 to 0.016 inch (0.16 to 0.43 mm)	12 to 20 lb (45 to 75 g/m ²)



Always load paper into the sheet feeder short edge first, except for envelopes. Load envelopes flap edge first with the flap side down.

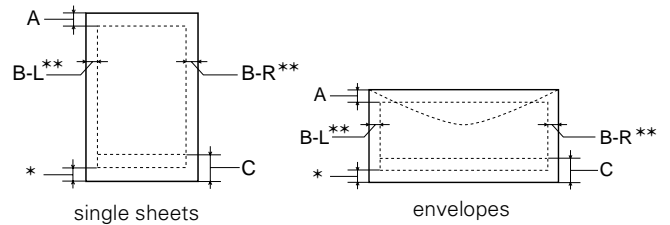
Since the quality of any particular brand or type of paper may be changed by the manufacturer at any time, EPSON cannot attest to the quality of any non-EPSON brand or type of paper. Always test samples of paper stock before purchasing large quantities or printing large jobs.

Poor quality paper may reduce print quality and cause paper jams and other problems. If you encounter problems, switch to a higher grade of paper. Do not load curled or folded paper.

Use papers under these conditions:

- Temperature: 59 to 77 °F (15 to 25 °C)
- Humidity: 40 to 60% RH

Printable area

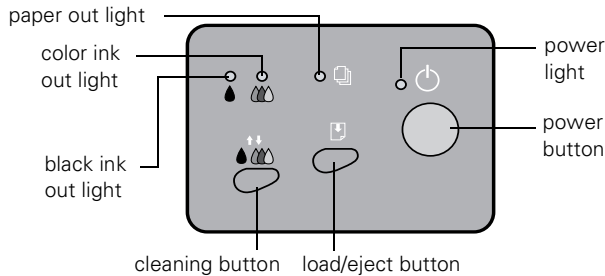


- A: The minimum top margin is 0.12 inch (3.0 mm).
- B-L: The minimum left margin is 0.12 inch (3.0 mm).
- B-R: The minimum right margin is 0.12 inch (3.0 mm).
- C: The minimum bottom margin is 0.55 inch (14.0 mm).

* You can extend the minimum bottom margin to 0.12 inch (3.0 mm) by selecting Maximum as the Printable Area setting. However, print quality may decline in the expanded area. Before printing large jobs, print a single sheet to confirm print quality.

** When Roll Paper-No Margins or Sheet Feeder-No Margins is selected as the Paper source, the left and right margins are 0 (available only at certain paper widths: 4, 8.3, 8.5, 13 [12.95 Macintosh]).

Control Panel



Follow these guidelines when you check the control panel lights.

⏻ is on	The ⏻ power light is on when the printer is on and ready to print. It flashes when the printer is receiving a print job, charging ink, or cleaning the print head.
📄 flashes	When the 📄 paper out light flashes, you have a paper jam. Press the 📄 load/eject button to try to clear the jam. If that doesn't work, turn off the printer and gently pull out all the paper. Make sure none of the sheets are curled, creased, old, stuck together, or too thin. Then reload the paper against the right edge guide and slide the left edge guide against it. Turn on the printer and press the 📄 load/eject button to resume printing. If you're using roll paper, see page 7 for additional loading instructions.
📄 is on	When the 📄 paper out light comes on, your paper is out or incorrectly loaded. Make sure none of the sheets are curled, creased, old, stuck together, or too thin. Then reload the paper against the right edge guide and slide the left edge guide against it. Press the 📄 load/eject button to resume printing. If you're using roll paper, see page 7 for additional loading instructions.
🖨️ or 🖨️ flash	When an ink out light flashes, your ink supply is low. Make sure you have a replacement cartridge.
🖨️ or 🖨️ are on	When an ink out light comes on, you need to replace the ink cartridge. Make sure you have a replacement cartridge. See page 8 for instructions. If an ink out light comes on after you've replaced a cartridge, you installed a cartridge your printer can't use. Remove it and replace it with the correct type (see page 1 for ink cartridge specifications).
⏻ and 📄 flash and 🖨️ and 🖨️ are on	When the ⏻ power and 📄 paper out lights flash and one or both of the ink out lights come on, jammed paper may be blocking movement of the print head. Turn off the printer, open the cover, and check inside for any jammed paper. Then turn the printer back on. If the lights still flash and/or come on, contact your dealer or EPSON.

⏻ 📄 🖨️ 🖨️ flash	When all the lights flash, your printer may have an internal error. Make sure you removed all the packing material as described on the <i>Start Here</i> poster in your printer box. Then turn off the printer, wait a few seconds, and turn it on again. If the lights still flash, contact your dealer or EPSON.
⏻ 📄 🖨️ 🖨️ are off	When all the lights are off, the printer is not receiving power. Try these solutions: <ul style="list-style-type: none"> <input type="checkbox"/> Make sure the printer is turned on. <input type="checkbox"/> Turn off the printer, plug in the power cord securely, and turn on the printer again. <input type="checkbox"/> Make sure the outlet is operable and is not controlled by a switch or timer. If in doubt, try using another outlet.

Installing an Ink Cartridge for the First Time



Follow these ink cartridge precautions and the others in "Safety Instructions" in the *Printer Basics* book:

- Install both ink cartridges, and leave them installed for all types of printing, or the printer won't work.
- Remove the yellow tape seal from the top of the ink cartridges or you'll permanently damage them. Don't remove the clear seals on the bottom or ink will leak out.
- Don't touch the green chip on the back of the cartridge. This may inhibit normal operation and printing.
- Never turn off the printer when the ⏻ power light is flashing, unless the printer hasn't moved or made any noise for more than five minutes.

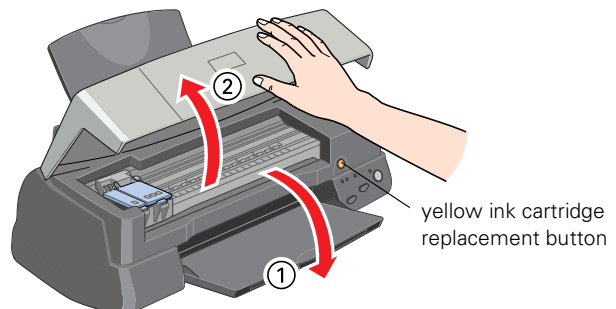


Keep ink cartridges out of the reach of children and do not drink the ink.

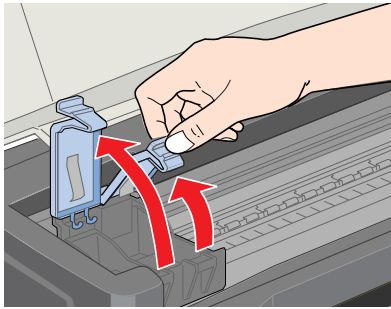
If ink gets on your skin, wash the area thoroughly with soap and water. If ink gets in your eyes, flush them immediately with water.

Before you begin, make sure the printer is plugged into an electrical outlet and turned on.

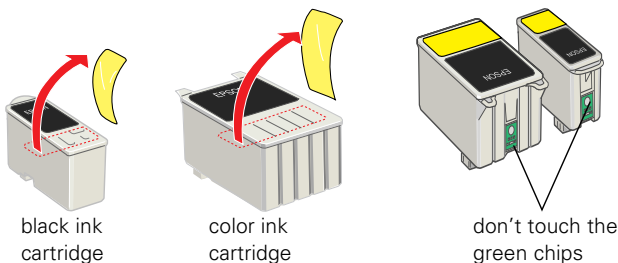
1. Lower the output tray and open the cover.



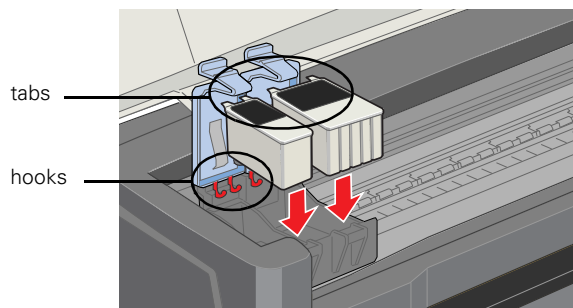
- Lift up the two ink cartridge clamps.



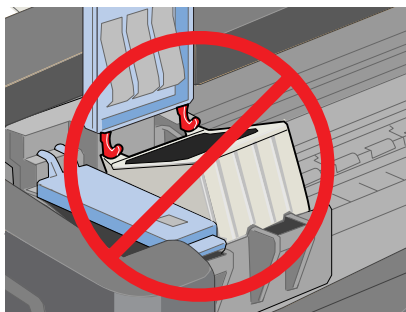
- Unwrap the ink cartridges, then remove only the yellow part of the tape seal on top.



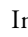

- Tilt each cartridge forward slightly as you lower it into its holder. Hang the tabs at the back of the cartridge on the hooks on the holder clamps.



CAUTION Don't place the cartridges *under* the holder clamp; you may damage the clamp when you close it.



- Close the ink cartridge clamps. (The color clamp is a bit harder to close.)
- Press the yellow ink cartridge replacement button (shown in step 1) and close the printer cover.

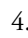



Ink charging takes about three minutes, with the  power light flashing and the printer making noise until it's finished. Don't turn off the printer or interrupt charging or it will start over, using more ink than necessary. It's finished when the  power light stops flashing.



The printer's first ink cartridges won't last as long as the replacements. This is because the printer uses more ink when charging the print head for the first time.

Testing the Printer

You can run a printer check to determine whether a problem comes from the printer itself or some other source. Follow these steps to run the printer check:

- Make sure both the printer and computer are turned off.
- Disconnect the interface cable from the printer.
- Make sure letter-size or larger paper is loaded in the printer.
- Hold down the  load/eject button, then press and release the  power button. Continue holding down the  load/eject button until the  power light starts to flash, then release it.

The printer prints one page showing its ROM version number, ink counter, and a nozzle check pattern. Only the nozzle check pattern is shown below. (If the pattern has gaps in its dots, you need to clean the print head; see page 9.)



- To end the check, turn off the printer after it prints the check page. Then reconnect the interface cable and turn on your printer and computer.

If the check page prints, the problem probably lies in your software settings, the interface cable, or your computer.

If the check page doesn't print, you may have a problem with your printer.

Try the suggestions in "Problems and Solutions" in the *Printer Basics* book.

Printing on Special Media

Whether you print on special media or plain paper, you need to select the Media Type setting according to the guidelines in the table below.

For this paper . . .	Select this Media Type setting
EPSON Archival Matte Paper EPSON Watercolor Paper–Radiant White	Archival Matte Paper
EPSON Premium Semigloss Photo Paper EPSON Premium Luster Photo Paper	Premium Semigloss Photo Paper
Plain paper (sheets or envelopes)	Plain paper



Use only papers specifically designed for the EPSON Stylus Photo 2000P. Other EPSON papers may not work as well with your printer.

Traditional fine art papers may deposit dust or fibers inside your printer and cause its feeding mechanism to malfunction.

Be sure to follow these media loading guidelines:

- Be sure to load the printable (whiter, brighter, or smoother) side of the media face up in the sheet feeder.
- In addition to the **Media Type** option, remember to select the correct **Paper Size** for your media in the printer software.
- Avoid handling the printable surface (moisture and oils from your skin can affect print quality), and return unused paper to the original package when you finish printing.

Follow the guidelines below to select the best paper for your project, load it in the printer, and make the correct printer settings.

Archival Matte Paper

Archival Matte Paper has a professional-looking, flat matte finish for printing photos, graphics, and digital fine art on a smooth, non-glossy surface. Keep the following in mind when printing on this paper:

- Always load it with the whiter side face-up.
- Load up to 20 letter-size sheets at a time. Load only one sheet if printing on A3 (11.7 × 16.5 inch) or Super B (13 × 19 inch) paper.
- Use a loading support sheet if it is included in the paper package.
- Select **Archival Matte Paper** as the Media Type setting.

Premium Semigloss Photo Paper

Premium Semigloss Photo Paper is a photo-weight paper with a semigloss finish suitable for photographic applications. Keep the following in mind:

- Always load it with the whiter, glossier side face-up.
- Load one sheet at a time.
- Select **Premium Semigloss Photo Paper** as the Media Type setting.
- Remove each sheet from the output tray immediately after it's done printing, and let the colors set for several minutes before stacking.

This paper is also available in 4-inch-wide rolls.

Premium Luster Photo Paper

Premium Luster Photo Paper is a resin-coated photo-weight paper of the type commonly used by portrait photo labs. Its light sheen and textured surface create the look of real photo prints. Keep the following in mind when printing on this paper:

- Always load it with the whiter, glossier side face-up.
- Load one sheet at a time.
- Select **Premium Semigloss Photo Paper** as the Media Type setting.
- Remove each sheet from the output tray immediately after it's done printing, and let the colors set for several minutes before stacking.

This paper is also available in 8.3- and 13-inch-wide rolls.

Watercolor Paper–Radiant White

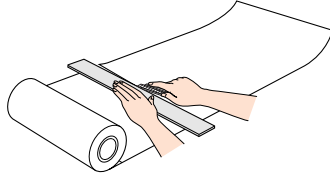
Watercolor Paper–Radiant White has the look and feel of textured watercolor papers typically used by artists. Photographs printed on this paper have a soft watercolor tone. Keep the following in mind when printing on this paper:

- The whiter, smoother side is the printable side of the page. Always load this paper with the printable side face-up.
- Load one sheet at a time.
- Select **Archival Matte Paper** as the Media Type setting.

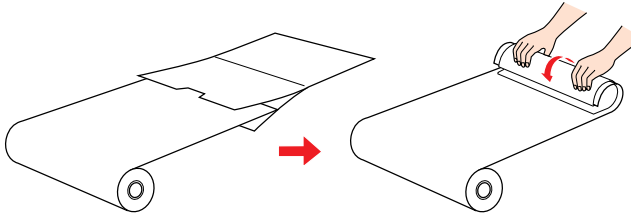
Loading Roll Paper

When loading roll paper, be sure to follow the instructions in this section. Also, make sure **Roll Paper** is selected as your Paper Source in the printer driver.

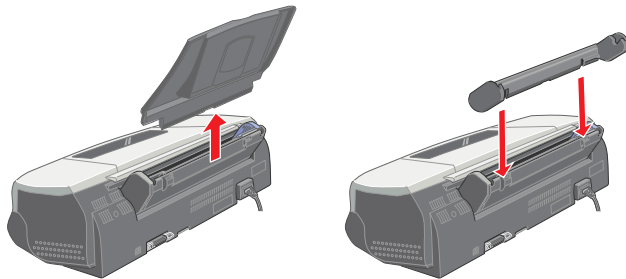
1. Before loading the roll, make sure the edge is cut cleanly—at a 90-degree angle in each corner—to ensure proper loading. If necessary, trim the edge using a straight-edge tool.



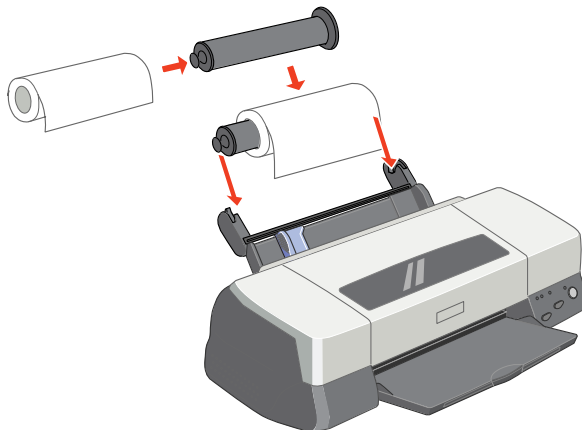
2. To make loading easier, roll the first several inches of the paper backward to uncurl it. Use the plastic sheet included with your printer to prevent your hands from marring the printable surface. (Or you can use a folded sheet of paper.)



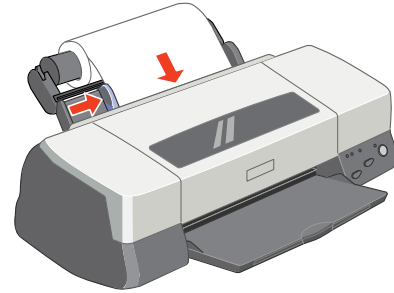
3. Remove the printer's paper support and install the roll paper holder in the same mounting slots.




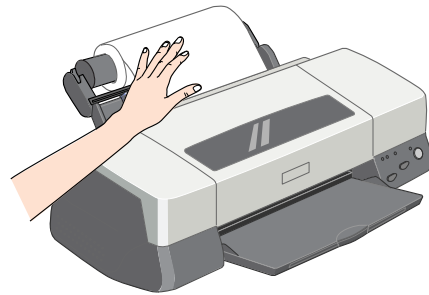
4. Insert the roll paper onto the spindle, making sure it's oriented as shown here. Then place the spindle with the roll paper onto the holder.

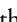


5. Load the end of the paper into the printer as far as it will go, then slide the left edge guide against the paper.





6. Gently hold the paper in place as you press and release the  load/eject button to feed the paper into the printer. Avoid handling the paper excessively, to prevent contamination with dirt or grease.




(If the paper doesn't feed properly, lift the paper out and then reload it. If the paper doesn't come out easily, hold down the  load/eject button for three seconds. Then turn the printer off, remove the paper, and turn the printer back on to reset it. When reloading, make sure the end is cut straight and not curled or damaged. If necessary, re-trim the paper as shown in step 1.)

7. Make sure the output tray is open but the extensions are closed, and leave ample room at the front of the printer for your paper to eject smoothly.

Replacing an Ink Cartridge

When the  black or  color ink out light flashes, the indicated cartridge is low on ink. This is a good time to make sure you have a new cartridge. When the light stays on, the cartridge is empty and you need to replace it.

When an installed ink cartridge is more than six months old, you may also need to replace it if you notice that your printouts don't look as good as they used to. If print quality doesn't improve after cleaning and aligning the print head, you can replace one or both cartridges. To check the level of ink you have left, see the graphic in the printer driver (Windows) or click the  ink level icon in the printer driver or EPSON Monitor 3 utility (Macintosh).



You cannot print if either ink cartridge is empty. Leave the empty cartridge installed in the printer until you have obtained a replacement. Otherwise the ink remaining in the print head nozzles may dry out.

To ensure good results, use genuine EPSON ink cartridges and do not refill them. Other products may cause damage to your printer not covered by EPSON's warranty.

Use these EPSON ink cartridges within six months of installing them and before the expiration date on the package:

Cartridge	Part number
Black	U.S. and Latin America: T015201; Canada: T007311
Color	U.S. and Latin America: T016201; Canada: T009311

When you need new ink cartridges, contact your dealer or call EPSON at (800) 873-7766 or visit our web site at www.epson.com (U.S. sales only). In Canada, please call (800) 873-7766 for dealer referral.

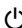





The printer's first ink cartridges will run out of ink sooner than the replacement cartridges. This is because the printer has to charge its ink delivery system when cartridges are installed the first time.

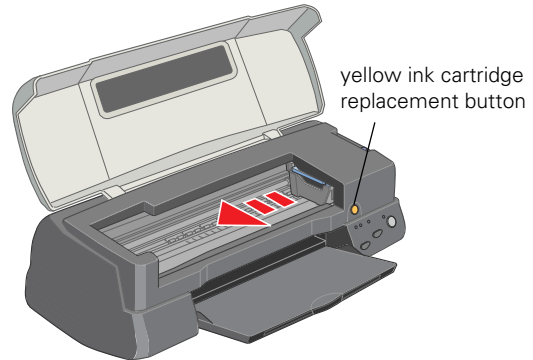
To conserve ink, avoid cleaning the print head more often than necessary, and always turn the printer off using the power button (not from a power strip or external switch).

Be sure you have a new ink cartridge before you begin. Once you start the ink cartridge replacement procedure, you must complete all the steps in one session.

Follow these steps to replace ink cartridges:

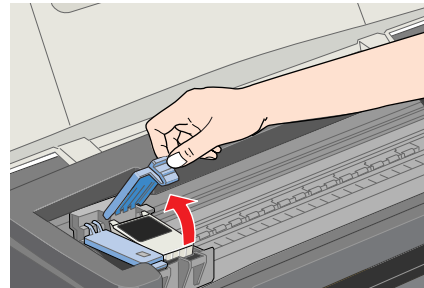
1. Make sure the printer is turned on and not printing (the  power light should be on, but not flashing).
2. Check the  black and  color ink out lights to see which ink cartridge you need to replace.

3. Open the printer cover and press the yellow ink cartridge replacement button. The print head moves left and the  power light begins flashing.

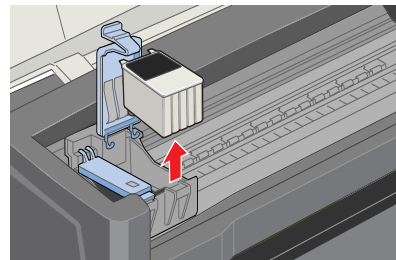


To avoid damaging the printer, never move the print head by hand.

4. The color cartridge is on the right and the black cartridge is on the left. Pull up the ink cartridge clamp all the way. The cartridge rises up from its holder.



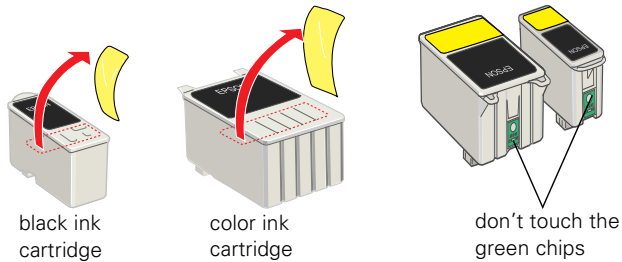
5. Lift the cartridge out of the printer and dispose of it carefully.



Keep ink cartridges out of the reach of children and do not drink the ink.

If ink gets on your skin, wash the area thoroughly with soap and water. If ink gets in your eyes, flush them immediately with water.

6. Unwrap the ink cartridges, then remove only the yellow part of the tape seal on top.

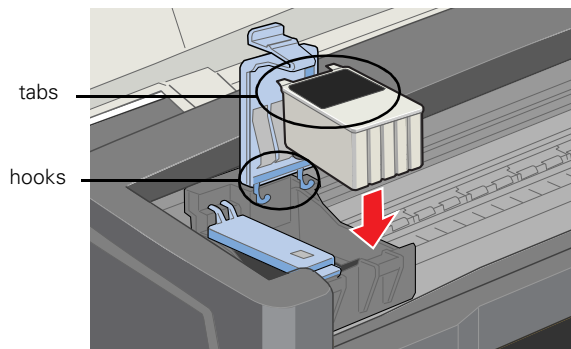


You must remove the yellow tape from the top of the cartridge or you will permanently damage it. Don't pull off any other part of the label or try to remove the clear seal underneath the cartridge.

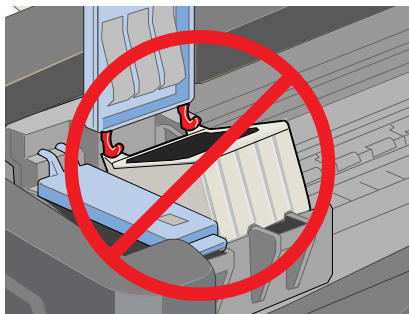
Don't touch the green circuit board on the back of the cartridge; you may inhibit normal operation and printing.

7. Tilt the ink cartridge forward slightly as you lower it into its holder.

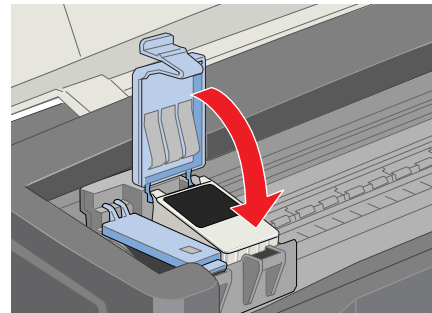
Hang the tabs at the back of the cartridge on the hooks on the holder clamps.



Don't place the cartridge tabs *under* the hooks on the holder clamp; you may damage the clamp when you close it.



8. Press down the ink cartridge clamp until it locks in place. (The color clamp is a bit harder to close than the black clamp.)



9. If you need to replace the other ink cartridge, repeat steps 4 through 8 before continuing with step 10.

10. Press the yellow ink cartridge replacement button and close the printer cover. The printer moves the print head and begins charging the ink delivery system.

The power light flashes, and the printer makes noise. Charging takes about one minute. When it's finished, the power light stops flashing and stays on.



Never turn off the printer while the power light is flashing, unless the printer hasn't moved or made noise for more than 5 minutes.

Cleaning the Print Head

If your printed image is unexpectedly light or faint, or has missing bands of color, you may need to clean the print head. This unlogs the nozzles so they can deliver ink properly.

Cleaning the print head uses ink, so clean it only if print quality declines. You can clean the print head in either of the following ways:



- using the Head Cleaning utility (when the printer is connected to a local port, not over a network), as described below
- using the printer's control panel buttons, as described on page 10



When you don't turn on your printer for a long time, the print quality can decline. It's a good idea to turn on your printer at least once a month to maintain good print quality.

Using the Head Cleaning Utility


Follow these steps to run the Head Cleaning utility (recommended method):



1. Make sure the printer is turned on but not printing, and both the  black and  color ink out lights are off. (If an ink out light is flashing, replace the ink cartridge instead.)
2. If you have an application running, access the printer settings dialog box.


Or, with Windows, click **Start**, point to **Settings**, then select **Printers**. Right-click your **EPSON Stylus Photo 2000P** printer icon. Then select **Properties (Document Defaults in Windows NT or Printing Preferences in Windows 2000)**.

3. **Windows:** Click the **Utility** tab.

Macintosh: Click the  Utility button.

4. On the Utility menu, click the **Head Cleaning** button.
5. Follow the instructions on the screen to clean the print head. Cleaning takes about 30 seconds, during which the printer makes some noise and the  power light flashes.

 Never turn off the printer while the  power light is flashing, unless the printer hasn't moved or made noise for more than 5 minutes.

6. When the  power light stops flashing, run a nozzle check to confirm the print head nozzles are clean.



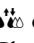
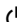
Make sure paper is loaded in the printer and click **Print nozzle check pattern**. Then click **Next**. The nozzle check pattern prints (see the next page for details).

7. If the nozzle check pattern has no gaps in its dots, click **Finish**.


If the pattern is missing dots, click **Clean** to clean the print head again. If you don't see any improvement after cleaning three or four times, check the solutions in the *Printer Basics* book. You can also turn the printer off and wait overnight—this allows any dried ink to soften—and then try cleaning the print head again.


Using the Control Panel to Clean the Print Head

Follow these steps to clean the print head:

1. Make sure the printer is turned on but not printing, and both the  black and  color ink out lights are off. (If an ink out light is flashing, replace the ink cartridge instead.)
2. Press the  cleaning button and hold it down for three seconds. Cleaning takes about 30 seconds, during which the printer makes some noise and the  power light flashes.



Never turn off the printer while the  power light is flashing, unless the printer hasn't moved or made noise for more than 5 minutes.

3. After the  power light stops flashing, open an application and print a short document containing black and color data. Check the quality of your printout, then go to step 8.

Or if your printer is connected directly to the computer, go to step 4 to run a nozzle check.

4. If you have an application running, access the printer settings dialog box.

Or, with Windows, click **Start**, point to **Settings**, then select **Printers**. Right-click your **EPSON Stylus Photo 2000P** printer icon in the **Printers** window. Then select **Properties (Document Defaults in Windows NT or Printing Preferences in Windows 2000)**.

5. **Windows:** Click the **Utility** tab.

Macintosh: Click the  Utility button.

6. Make sure paper is loaded in the printer, click the **Nozzle Check** button, and click **Next**. The nozzle check pattern prints (see the next section for details).

7. If the nozzle check pattern has no gaps in its dots, click **Finish**.

If the pattern is missing dots, click **Clean** to clean the print head again.

8. If you don't see any improvement after cleaning three or four times, check the solutions in the *Printer Basics* book. You can also turn the printer off and wait overnight—this allows any dried ink to soften—and then try cleaning the print head again.

Examining the Nozzle Check Pattern

Examine the nozzle check pattern you print. It should look something like this:



Each line in the pattern should be complete, with no gaps. If your printout looks okay, you're done. If any dots are missing, as shown below, clean the print head again; see page 9 for instructions.



Aligning the Print Head

If your printouts contain jagged characters or misaligned vertical lines, you may need to align the print head. Your printer must be connected to a local port, not on a network, to use the Print Head Alignment utility.

The utility is in two parts and takes approximately 15 minutes to complete. Follow these steps:

1. Make sure the printer is turned on but not printing, and letter-size paper is loaded.




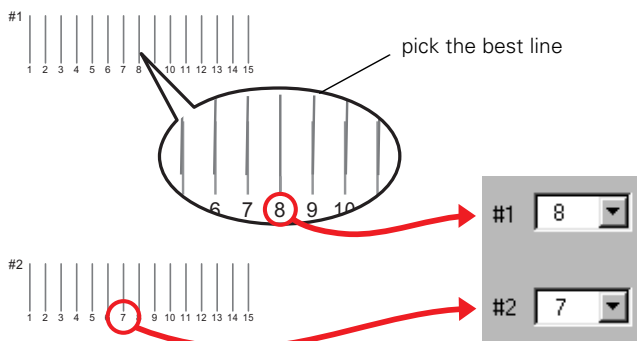
Load paper that's at least 8.27 inches (210 mm) wide to prevent ink from spraying inside the printer and smudging your printouts.

For the best results, use a photo-quality paper, such as EPSON Archival Matte Paper, to check the print head alignment. Don't use plain, recycled, or photocopier paper.

2. If you have an application running, access the printer settings dialog box.

Or, with Windows, click **Start**, point to **Settings**, then select **Printers**. Right-click your **EPSON Stylus Photo 2000P** printer icon in the **Printers** window. Select **Properties (Document Defaults in Windows NT or Printing Preferences in Windows 2000)**.

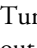
3. **Windows:** Click the **Utility** tab.
Macintosh: Click the  **Utility** button.
4. You see the **Utility** menu. Click the **Print Head Alignment** button.
5. Follow the instructions on the screen to print a test page.
6. Select the best line from the first group of lines on the printout, then enter its number in box #1 on screen. Select the line with the cleanest, straightest edges. Then choose the best line in the second group, and enter its number in box #2 on screen.



7. If you want to check the results, click **Realignment** to print another test page. Make sure the middle line (numbered 8) in each group is the best. If it isn't, you may need to repeat step 6 more than once. When done, click **Next** to continue with the second part of the alignment utility.
8. Follow the instructions on screen to print two columns of boxes.
9. Select the box with the smoothest gray from the first column, then enter its number in box #1 on screen. Select the box where individual colors can't been seen or that doesn't look pixelated. Then choose the best box from the second column and enter its number in box #2 on screen.
10. If you want to check the results, click **Realignment** to print another set of boxes. Make sure the middle box (numbered 5) in each column is the best. If it isn't, you may need to repeat step 9 more than once.
11. When done, click **Finish**.

Cleaning the Printer

To keep your printer working at its best, you should clean it several times a year. Follow these steps:

1. Turn off the printer and wait for the  power light to go out.
2. Unplug the power cord and disconnect the printer cable.
3. Remove all the paper from the sheet feeder.
4. Clean the exterior of the printer with a soft, damp cloth.
5. Clean ink out of the printer's interior with a soft, damp cloth.

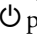


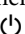
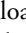
Don't clean the gears or touch any other parts inside the printer, except as described below.

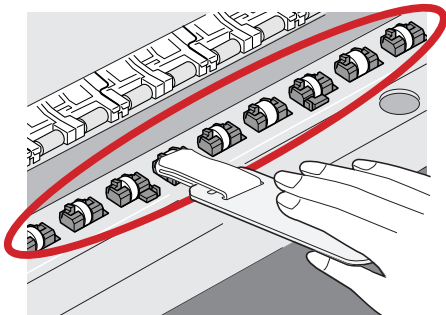
Never use a hard or abrasive brush, or alcohol or thinner for cleaning; they can damage the printer components and case.


Don't get water on the printer components and don't spray lubricants or oils inside the printer.

If you notice streaks of ink marring your printouts, your printer's paper eject rollers may be dirty. You can clean the rollers using the cleaning tool that came with your printer (or you can just use cotton swabs). Follow these steps:

1. Plug in the printer, but make sure it's turned off and the  power light is not on.
2. Place several sheets of plain paper in the printer.
3. Dampen the cleaning tool, and then squeeze out any excess water.

4. Hold down the yellow ink cartridge replacement button, and then turn on the printer by pressing the  power button. Continue holding down the yellow button until you see all three control panel lights flashing.
5. Press the  load/eject button. A sheet of paper feeds into the printer (under the paper eject rollers) and the rollers turn slowly.
6. Wipe off ink from the rollers using the dampened cleaning tool as shown.



If the paper ejects before you finish cleaning, press the  load/eject button to feed another sheet into the printer.

7. When you're finished, turn the printer off.

Transporting the Printer

If you move your printer some distance, you need to prepare it for transportation in its original box or one of a similar size.



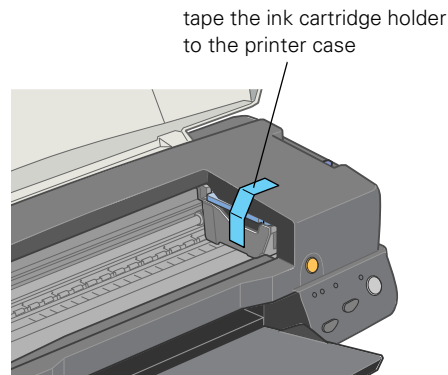
To avoid damage, always leave the ink cartridges installed when transporting the printer.

Be sure to remove the tape used in step 4 after installing the printer in its new location.

Follow these steps:

1. Turn on the printer, wait until the print head locks in the far right position, then turn off the printer.
2. Unplug the power cord from the electrical outlet. Then disconnect the printer cable from the printer.
3. Remove any paper from the printer and remove the paper support.

4. Open the printer cover. Secure the ink cartridge holder to the printer with tape as shown, then close the printer cover.



5. Push in the output tray extensions and close the tray.
6. Repack the printer and attachments in the original box using the protective materials that came with it. See the unpacking sheet that was packed with your printer.

Be sure to keep the printer level as you transport it.

After transporting the printer, remove the tape securing the print head and test your printer. If you notice a decline in print quality, clean the print head (see page 9); if output is misaligned, align the print head (see page 11).

Related Documentation

TM-SP2000P	EPSON Stylus Photo 2000P Service Manual
PL-SP2000P	EPSON Stylus Photo 2000P Parts Price List
CPD-10627	EPSON Stylus Photo 2000P <i>Printer Basics</i>
CPD-10628	EPSON Stylus Photo 2000P <i>Start Here</i>
CPD-10629	EPSON Stylus Photo 2000P printer software CD-ROM
CPD-10714	Welcome letter
CPD-10714R1	Welcome letter revision