



EPSON[®]

**IMAGE
AUTHENTICATION
SYSTEM™**

User's Guide

EPSON is a registered trademark of SEIKO EPSON Corporation. PhotoPC is a registered trademark, and HyPict, Image Authentication System, and FaxAdvice are trademarks of EPSON America, Inc. SoundAdvice is a service mark of EPSON America Inc.

Microsoft, Windows, and Windows NT are registered trademarks of Microsoft Corporation. IBM is a registered trademark of IBM Corporation.

Other product names used herein are for identification purposes only and may be trademarks of their respective owners.

This software is based in part on the work of the Independent JPEG Group.

Contents

Introduction	1
System Requirements	2
Installation and Setup	2
Installing IAS	3
Uploading IAS to Your Camera	3
Verifying Pictures	9
Displaying Different Views	12
Where to Get Help	15
Appendix	17



Introduction

The EPSON Image Authentication System™ (IAS) lets you check the authenticity of photos taken with your EPSON PhotoPC® 700 or EPSON PhotoPC 750Z camera. IAS detects when even a single bit of digital data in a picture has been altered. Because IAS doesn't change the file format, it has no affect on your ability to store and display pictures, or to use them in other applications.

Important:

Your software license agreement permits you to upload the IAS software to only one EPSON digital camera per software copy or license purchased.

System Requirements

Your system must have the following:

- IBM[®] compatible PC with a 486 or higher processor
- Microsoft[®] Windows[®] 98, Windows 95, Windows NT[®] 3.51, or Windows NT 4.0 (with Service Pack 3) or greater
- 9-pin serial port
- At least 16MB RAM
- VGA monitor with minimum resolution of 640 × 480 and at least 16-color display



Installation and Setup

This section explains how to install the IAS software on your computer and upload it to your camera.

Note:

Once you upload IAS to your camera, you will not be able to remove it.

Installing IAS

Follow these steps to install IAS:

1. Insert the EPSON Image Authentication System CD into your CD-ROM drive.
2. Click the Start button, then click Run.
3. Type *D:\SETUP* (where *D* is the letter of the CD-ROM drive) and click OK to start the installation program.
4. Follow the instructions on your screen.

Uploading IAS to Your Camera

EPSON Image Authentication System only verifies the authenticity of pictures taken after the IAS program is uploaded to your camera.

You can use this procedure both to upload IAS to your camera and to verify that IAS is loaded on a camera.

Before you start, make sure you have the serial cable that came with your camera. Also, either use an AC adapter or make sure your camera has a fully charged set of batteries.

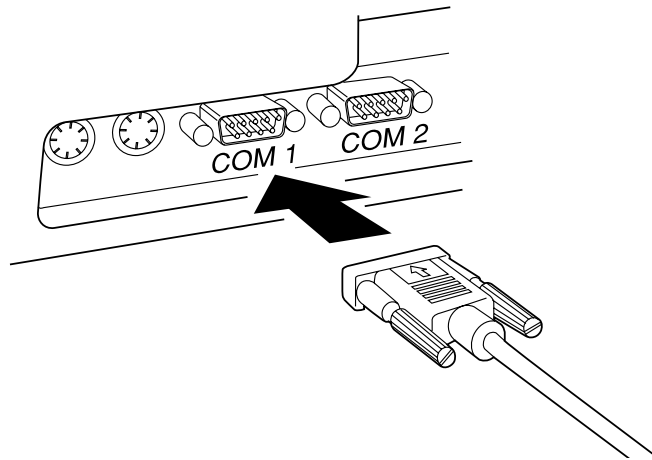
Turn off the camera and LCD screen, then follow these steps:

1. Locate your computer's serial port.

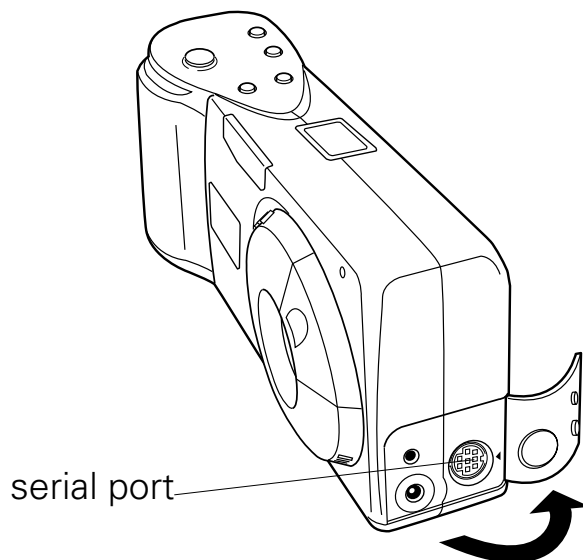
Note:

You may have two serial ports labeled COM1 and COM2, or the ports may be labeled with icons. If you have two ports, use COM1 to connect your camera.

2. Line up the serial connector on the cable with your computer's serial port, and insert the connector. Then tighten the screws.



3. Open the connector cover on the side of the camera.

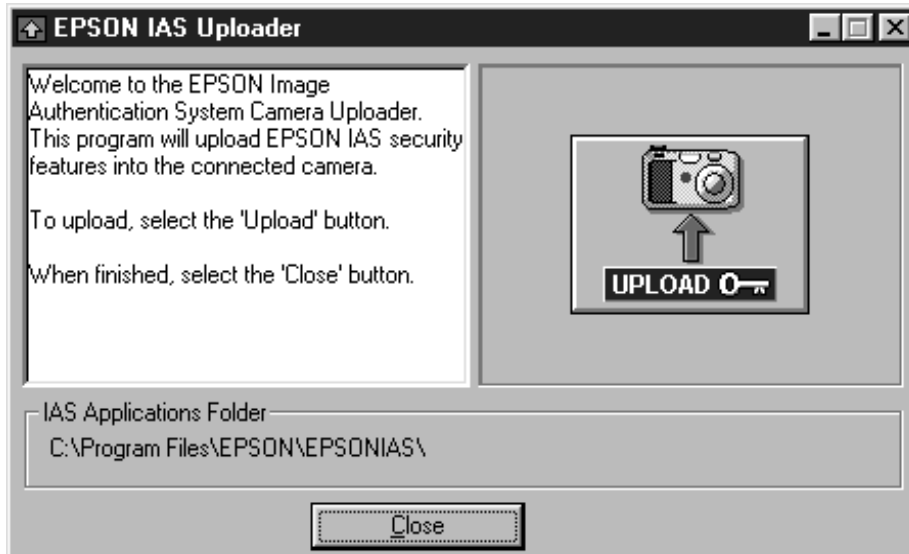


4. Line up the cable's connector with the camera's serial port. Then insert the connector.
5. Turn on the camera.

Note:

If you have problems connecting to the COM port you've selected, check your computer's COM port configuration and try again. If you're using batteries instead of an AC adapter, make sure your batteries are fully charged.

6. Click Start, point to Programs, EPSON Image Authentication System, and click Camera Uploader. You see the following screen:



7. Click the UPLOAD button. The software uploads to your camera. When uploading is complete, you see the following screen:



Your software license permits you to upload the software to one camera. If you purchased additional copies of software, continue with step 8. Otherwise, go to step 9.

Note:

If IAS can't find your camera, follow the instructions on the screen to establish a connection.

8. To upload IAS to another camera, disconnect the first camera and connect the second. Turn the second camera on, then click Test Connection to make sure the camera is properly connected. The software uploads automatically to the second camera.
9. Click Close, then turn off and disconnect your camera when you're finished.

Any pictures you take with your camera from this point on can be checked by IAS for authenticity.

Note:

In the unlikely event your camera needs to be repaired, you will need to upload IAS again.

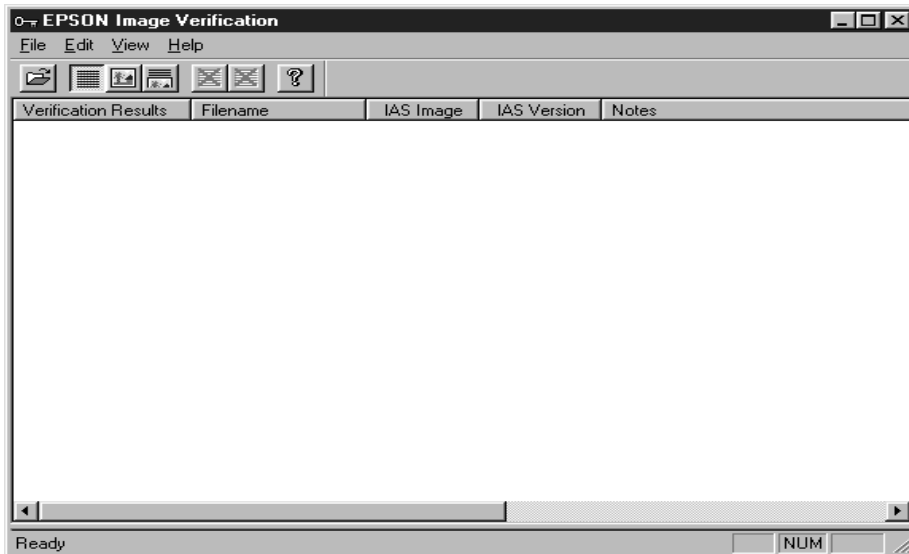



Verifying Pictures

After you've loaded IAS on a camera, any pictures you take will contain an invisible, encrypted "fingerprint." IAS uses this fingerprint to check the integrity of a picture. You can check a single picture or verify several pictures at once. (Transfer your photos to the computer before starting this procedure.)

To verify a picture:

1. Click Start, point to Programs, EPSON Image Authentication System, and click EPSON IAS Verification. You see the following screen:

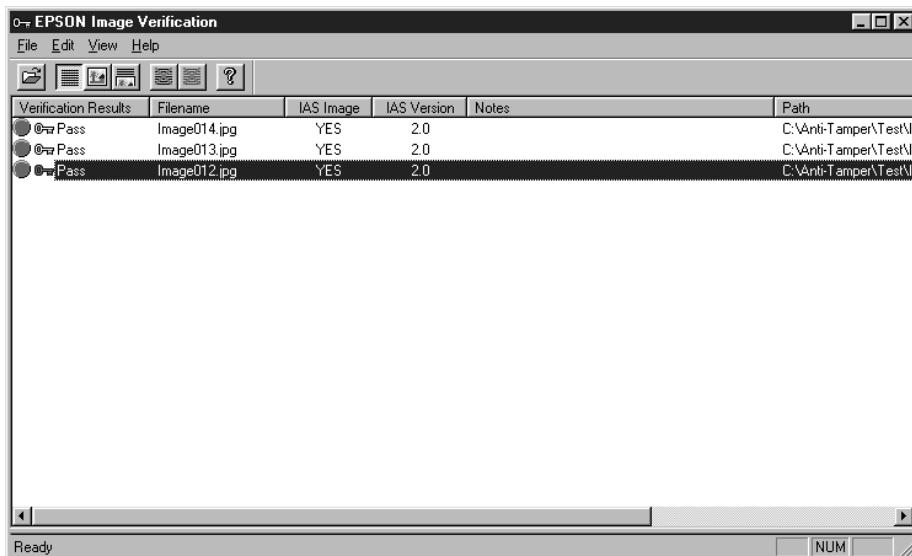


2. From the File menu, select Open, or click the  Open Folder button. You see the Open dialog box.

Note:

The command Select Key List File on the File menu is not operational for this release.

3. Locate and select the image files that you want to verify. Hold down the Control button as you click to select more than one file.
4. Click Open. You see the File List View:



The File List View lists the selected files and the following details for each picture:

Verification Results

Shows the verification results.

- PASS indicates the picture has not been altered.
- FAIL means the picture has been altered.
- Non-IAS image indicates the picture was taken with a camera without IAS loaded.
- ERROR indicates an error condition. (Errors are explained under Notes.)

Filename

Shows the filename of the picture.

IAS Image

Shows whether the picture was taken with a camera that has IAS installed.

IAS Version

Shows the version of IAS security in use.

Notes

Gives more detailed explanations of errors.

Path

Shows the path of the image file.



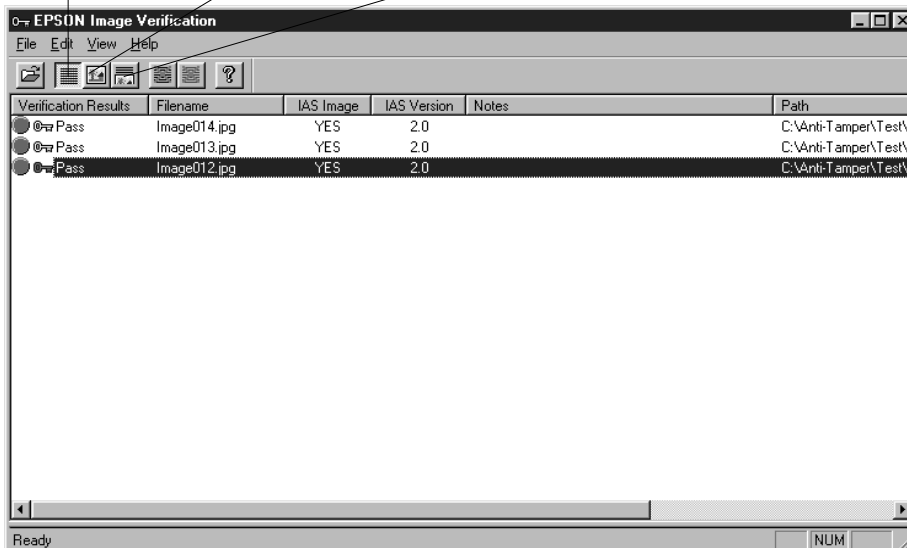
Displaying Different Views

In addition to the File List View, you can display verification results for a single image file (Test Info View), or you can display the File List View and Test Info View at the same time.

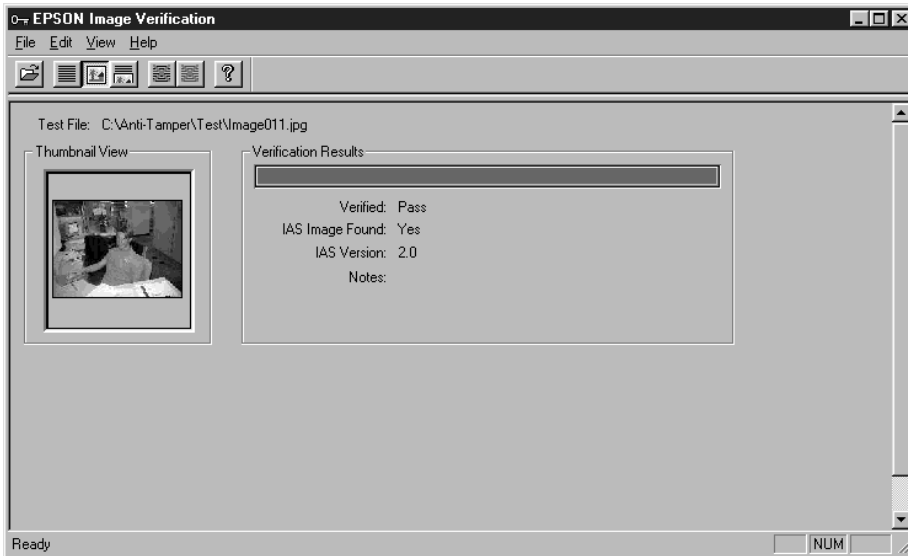
File List View
button

Test Info View
button

Both Views button

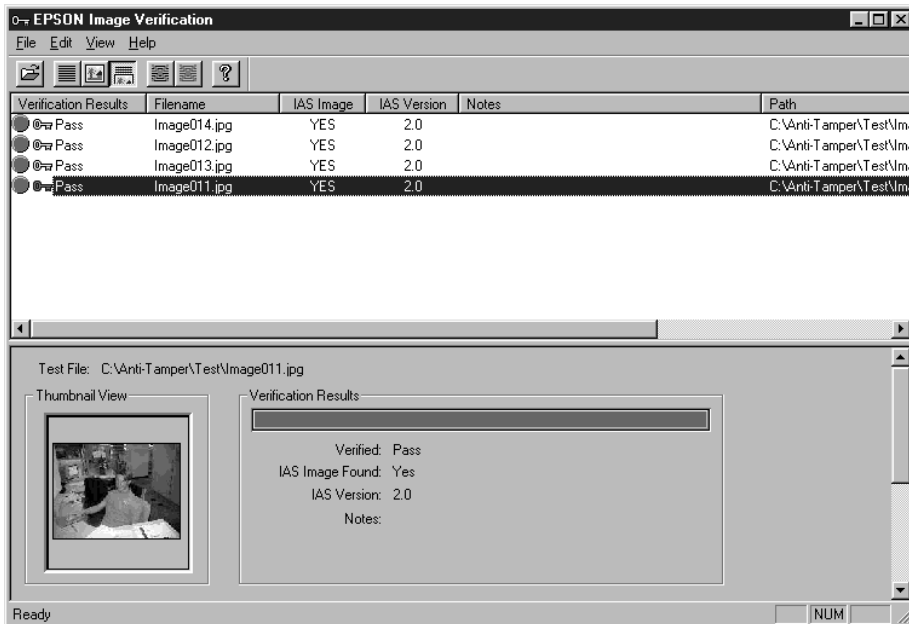


To display the Test Info View, click the Test Info View button in the toolbar, or choose Test Info View from the View menu. You see the following screen:



In addition to verification results, the Test Info View displays a thumbnail image of the selected picture.

To see the File List View and Test Info View at the same time, click the Both Views button, or choose Both Views from the View menu. You see the following screen:



To return to the File List View, click the File List View button on the toolbar, or choose File List View from the View menu.



Where to Get Help

EPSON provides technical assistance through electronic support services and automated telephone systems 24 hours a day, seven days a week, as follows:

- From the Internet, you can reach EPSON's Home Page at <http://www.epson.com>.
- For pre-recorded answers to commonly asked questions, call EPSON SoundAdviceSM at (800) 922-8911.
- You can also access EPSON FaxAdviceTM, EPSON's technical information library, by calling (800) 922-8911. You must provide a return fax number to use this service.
- For the location of your nearest Authorized EPSON Reseller, dial (800) 922-8911.

To speak to a technical support representative, dial (310) 974-1983 (U.S.), or (905) 709-3839 (Canada), 6 AM to 6 PM Pacific Time, Monday through Friday. Toll or long distance charges may apply.

You can purchase manuals and accessories from EPSON Accessories at **(800) 873-7766** (U.S. sales only). In Canada, please call **(800) 807-7766** for dealer referral. Or visit our website at **www.epsonsupplies.com** (U.S. sales only).



Appendix

When you've uploaded IAS to your camera, it takes slightly longer to process pictures. This appendix contains information about camera frame rates (approximate time between pictures) when IAS is installed.

Frame rates for the following tables are listed in seconds.

Color Mode, LCD Off

Image Quality	Photo PC 700	Photo PC 750Z
Standard	4	4
Fine	12	10
Super Fine	18	15
HyPict	N/A	35

Color Mode, LCD On

Image Quality	Photo PC 700	Photo PC 750Z
Standard	7	6
Fine	14	13
Super Fine	21	18
HyPict	N/A	37

CPD-8298