

P.I.M. Plug-in for Adobe Photoshop

version 1.10

P.I.M.-enabled digital cameras embed information in JPEG files to maximize the quality of the print—including a wider range of colors and enhancements set in the camera itself. The P.I.M. Plug-in for Adobe® Photoshop® allows you to retain the *P.I.M. image quality* when you import JPEG files from your P.I.M.-enabled digital camera.

The P.I.M. Plug-in works with Photoshop 7.0, 6.0, and Photoshop Elements 1.0. You will also need to use the ICC profiles for your printer. In Windows®, the profiles are installed along with the plug-in itself; on the Macintosh®, they are automatically installed with the printer driver.

The following printers currently support P.I.M. printing:

- EPSON Stylus® Photo 780
- EPSON Stylus Photo 785EPX
- EPSON Stylus Photo 1280
- EPSON Stylus Photo 820
- EPSON Stylus Photo 890
- EPSON Stylus Photo 2000P

This guide tells you how to import and print P.I.M. images in Photoshop and Photoshop Elements.

For more information about PRINT Image Matching™, visit the web site at www.printimagematching.com.

How Does P.I.M. Work?

Photoshop does not retain the P.I.M. information separately in the JPEG's header file when you import your P.I.M. image. Instead, it converts that information into the file and embeds a color space called EPSON RGB 2001. This profile supports all the P.I.M. color advantages and enhancements.

You can crop, rotate, resize, work with layers, play with filters, and even make selective color adjustments to the P.I.M. image while retaining P.I.M. quality. However, you will not benefit from global color adjustments (such as Auto Levels, Auto Contrast, Auto Color, etc.).

Also, if you try to use your new Photoshop file in another P.I.M.-enabled software program, it will not be recognized as a P.I.M. image. You need to keep your original file if you want to take advantage of P.I.M. information in other programs.

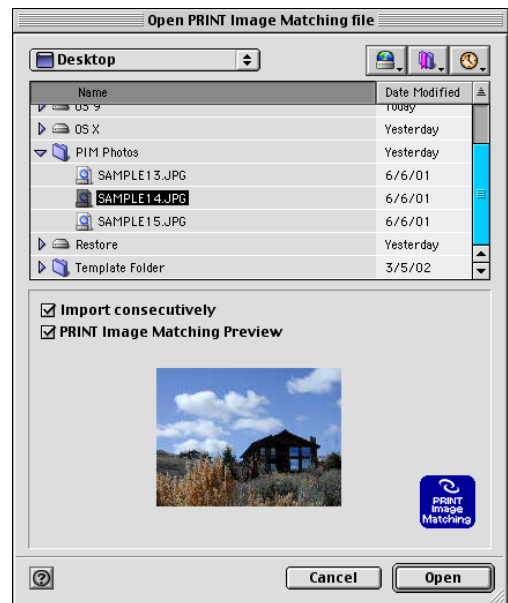
Importing a P.I.M. Image

Follow these steps to import a P.I.M. image into Photoshop 7.0, 6.0, or Photoshop Elements 1.0.

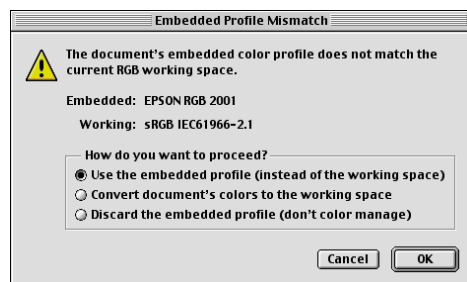


If you're using Photoshop Elements, you need to change your color settings before importing a P.I.M. image. Open the Edit menu and select **Color Settings**. Choose **Full color management - optimized for Print** and click **OK**.

1. Open the File menu and select **Import > PRINT Image Matching**. You see a window like this:
2. Locate the folder where your P.I.M. images are stored. In Windows, you will see a list of all the JPEG files in the folder. On a Macintosh, you will see only P.I.M. files.
3. Select the P.I.M. file you want to import.
4. To display a preview of the selected P.I.M. image, check the **PRINT Image Matching Preview** box. (If you select a non-P.I.M. image, you will not see a preview.)
5. Click the **Open** button. Your image opens, and the window remains on the screen.



If you see this **Embedded Profile Mismatch** warning, select **Use the embedded profile** and click **OK**.



- You can select and open additional P.I.M. images, or click **Cancel** to close the **Open PRINT Image Matching** file window. (If you don't want the window to remain on the screen after you open a file, uncheck **Import Consecutively**.)

If you want to keep the P.I.M. header information intact for use in other P.I.M.-enabled programs, keep the original file. Do not use the Photoshop **Save** command on your original file.

Instead, use the Photoshop **Save As** command to rename the file. The renamed file will not contain P.I.M. header information but will still retain *P.I.M. image quality* as long as the file is saved with the ICC profile embedded. If you overwrite your original file you will lose all P.I.M. header information.

Printing a P.I.M. Image

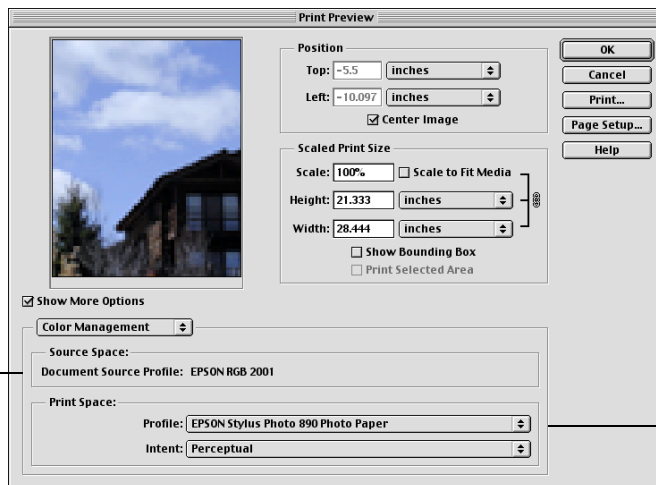
P.I.M. images are converted into the EPSON RGB 2001 color space. To retain the P.I.M. quality and enhancements, make sure you don't change the color space. Follow the steps in one of the sections below, depending on the program you're using.



The illustrations show Macintosh screens. Your screens will look different if you're using Windows, but you'll choose the same settings.

Printing in Photoshop Elements and Photoshop 7.0

- Open the File menu and select **Print Preview**. Then click **Show More Options** and select **Color Management**. You see a window like the one below:



Make sure this source is selected

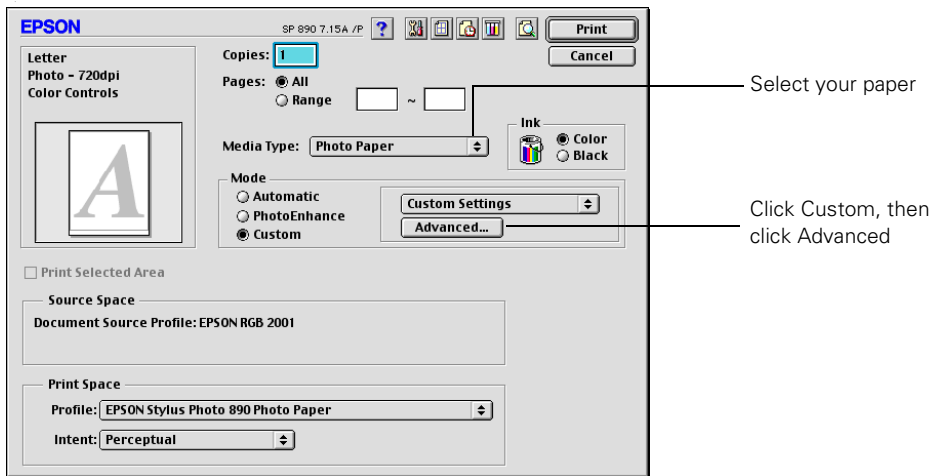
Select the profile for your printer and paper

2. In the Source Space box, make sure **EPSON RGB 2001** is selected.
3. In the Print Space box, select the profile for your printer and the paper you're using. We recommend selecting **Perceptual** for the Intent.
4. Click **Print**.



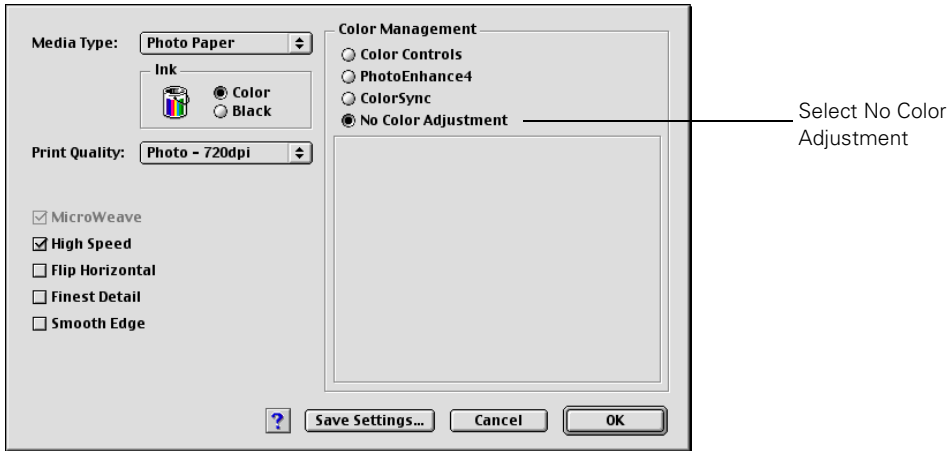
If you're using Windows, click **Setup**, then select your printer and click the **Properties** or **Preferences** button.

You see your printer Properties (or Preferences) window:



5. Under **Media Type**, select the paper you're printing on.
6. In the **Mode** box, click **Custom**, then click the **Advanced** button.

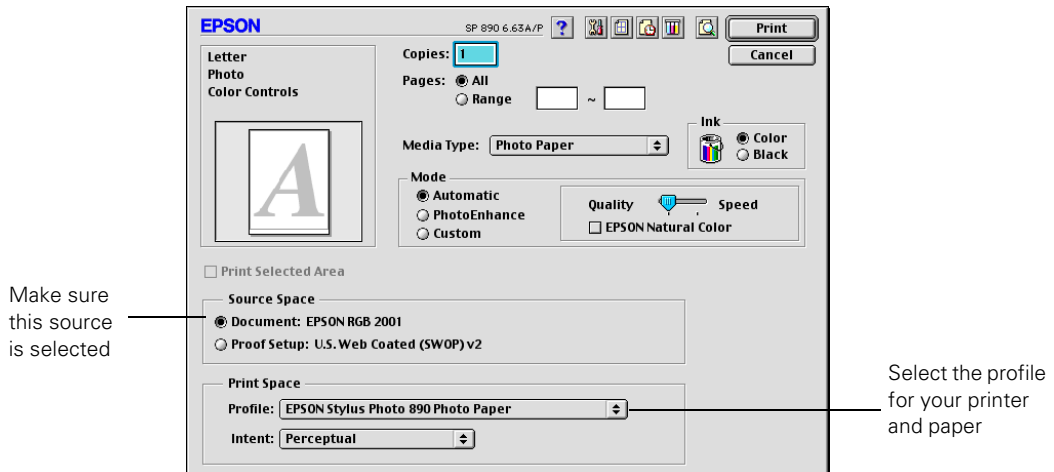
You see the Advanced window:



7. In the Color Management box, select No Color Adjustment and click OK.
8. Continue clicking OK (Windows) or click Print (Macintosh) to print your photo.

Printing in Photoshop 6.0

1. Open the File menu and select Print. You see a window like the following:



2. In the Source Space box, make sure Document: EPSON RGB 2001 is selected.
3. In the Print Space box, select the profile for your printer and the paper you're printing on. We recommend selecting Perceptual for the Intent.



If you're using Windows, click **Setup**, then select your printer and click **Properties** or **Preferences**.

You see your printer Properties (or Preferences) window.

4. Under Mode, select **Custom**, then click the **Advanced** button. You see the Advanced window, as shown on page 5.
5. In the Color Management box, select **No Color Adjustment** and click **OK**.
6. Continue clicking **OK** (Windows) or click **Print** (Macintosh) to print your photo.

Uninstalling the Plug-in

If you need to uninstall the P.I.M. plug-in, follow the instructions below.

Macintosh

Delete the **PRINT Image Matching** file from the **Plug-Ins\Import-Export** folder in your program folder (either Adobe Photoshop or Adobe Photoshop Elements).

Windows

1. Click **Start**, (**Settings**), **Control Panel**.
2. Select **Add or Remove Programs** or double-click **Add/Remove Programs**.
3. Select **P.I.M. Plug-in for Adobe Photoshop** from the list and click **Change/Remove** or **Add/Remove**.
4. Select **Remove P.I.M. Plug-in (v1.10) for Adobe Photoshop** and click **Finish**.
5. Follow the on-screen instructions to uninstall the plug-in.

PRINT Image Matching Version 2.0. Copyright 2002 SEIKO EPSON CORPORATION. All rights reserved.
PRINT Image Matching and the PRINT Image Matching logo are trademarks and EPSON Stylus is a registered trademark of SEIKO EPSON CORPORATION.

PRINT Image Matching is a term for the print command that is embedded in the header file of the image created by a digital camera. It contains color setting and image parameter information.