

Quick Setup


Before using the projector, make sure you read the safety instructions in the *User's Guide* on your projector CD.

Connect the projector

Choose from the following connections:

Computer USB Port

Connect a computer using the USB cable that came with the projector.

Connect the square end of the USB cable to the projector's  **USB TypeB** port. Connect the flat end of the cable to any USB port on your computer.




Windows®: After turning on the projector, follow the on-screen instructions to install the Epson USB Display software (EMP_UDSE.EXE; only on first connection).

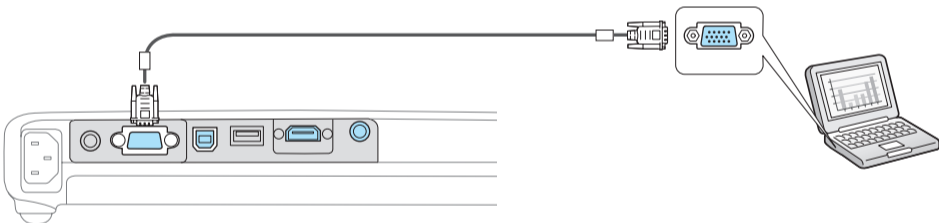
Note: *If the software screen does not display automatically, open **My Computer** or **Computer**, then double-click **EPSON_PJ_UD**. If it still does not display, access the projector's Extended menu and select **USB Display** as the **USB Type B** setting. See the *User's Guide* on your projector CD for instructions.*

Macintosh®: After turning on the projector, the setup folder for USB Display appears in the Finder. Double-click **USB Display Installer** and follow the on-screen instructions to install the Epson USB Display software (only on first connection).

Computer Monitor Port

Connect a computer using the VGA cable that came with the projector.

Connect one end of the cable to the projector's **Computer** port, and the other end to your computer's  monitor port. If you are using a notebook, switch it to external display (see "Troubleshooting"). You can also connect an audio cable.

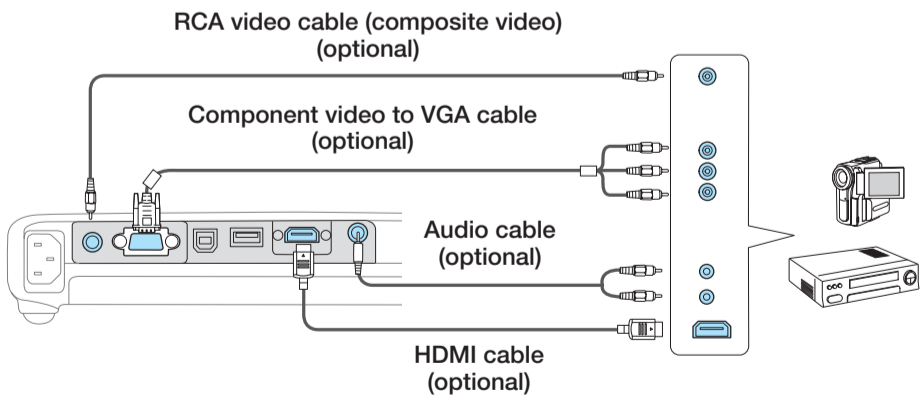


Wireless Network

You can connect the projector wirelessly over an 802.11g, 802.11b, or 802.11n wireless network. See "Projecting wirelessly" for instructions.

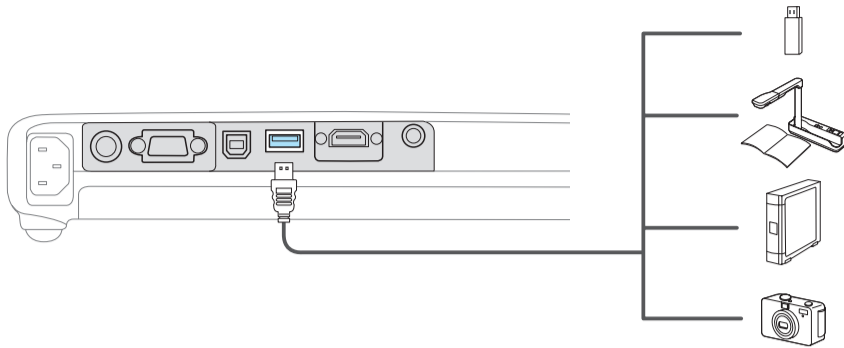
Video Device

Connect up to 3 video devices and use the **Source Search** button on the projector or remote control to switch between them.



Camera, USB Device, or Epson Document Camera

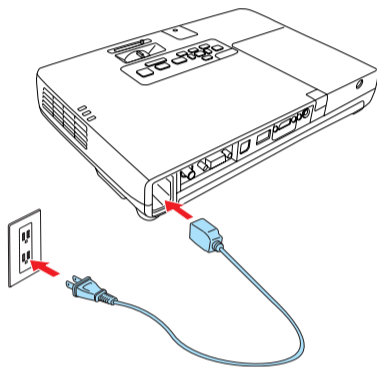
Connect a digital camera, USB flash drive, USB storage device, or Epson document camera to the projector's USB **TypeA** (flat) port.



If you connect a digital camera, USB flash drive, or USB storage device, you can use the projector's **Slideshow** feature. See the *User's Guide* and *EasyMP Slide Converter Operation Guide* on your projector CD for details.

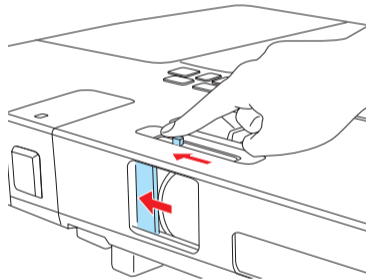
Turn on your equipment

- 1 Turn on your computer or video source.
- 2 Plug in the projector.

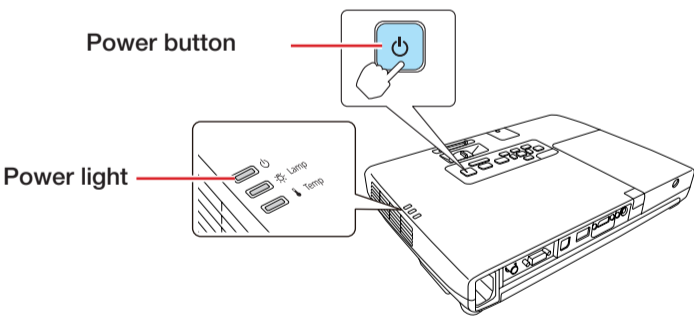


The power light on the projector turns orange.


- 3 Open the **A/V Mute** slide all the way.



- 4 Press the  power button on the projector or remote control.



The power light flashes green, then stays on.

Note: *To shut down the projector, press the  power button twice, then unplug it. You don't have to wait for the projector to cool down.*

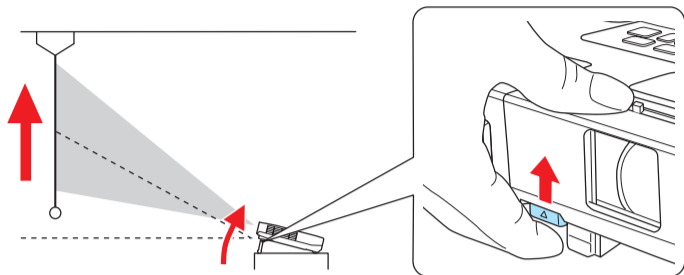


Adjust the image

- 1 If you don't see an image, press the **Source Search** button on the projector or the remote control to select the image source.

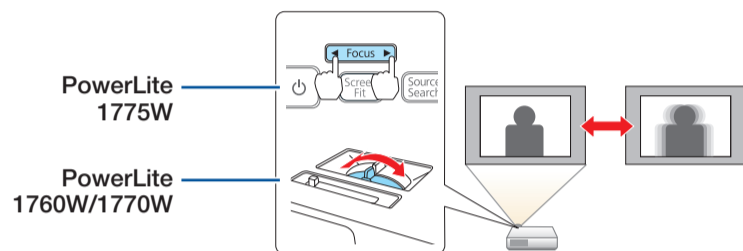
Note: If you still see a blank screen or have other display problems, see the troubleshooting tips on the back of this sheet.

- 2 To raise the image, press the foot release button and lift the front of the projector. Release the button to lock the foot in position.

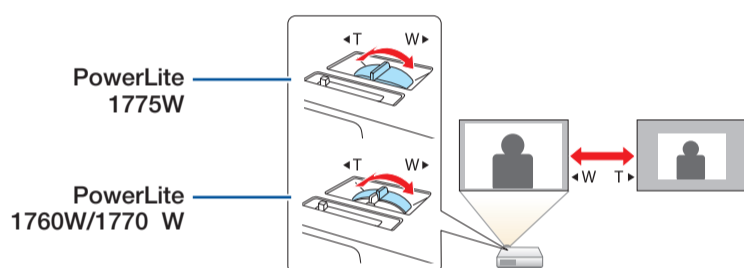




- 3 **PowerLite 1775W:** Press the **Focus** buttons to sharpen the image.





PowerLite 1760W/1770W: Rotate the focus ring to sharpen the image.



- 4 Turn the zoom ring to reduce or enlarge the image.

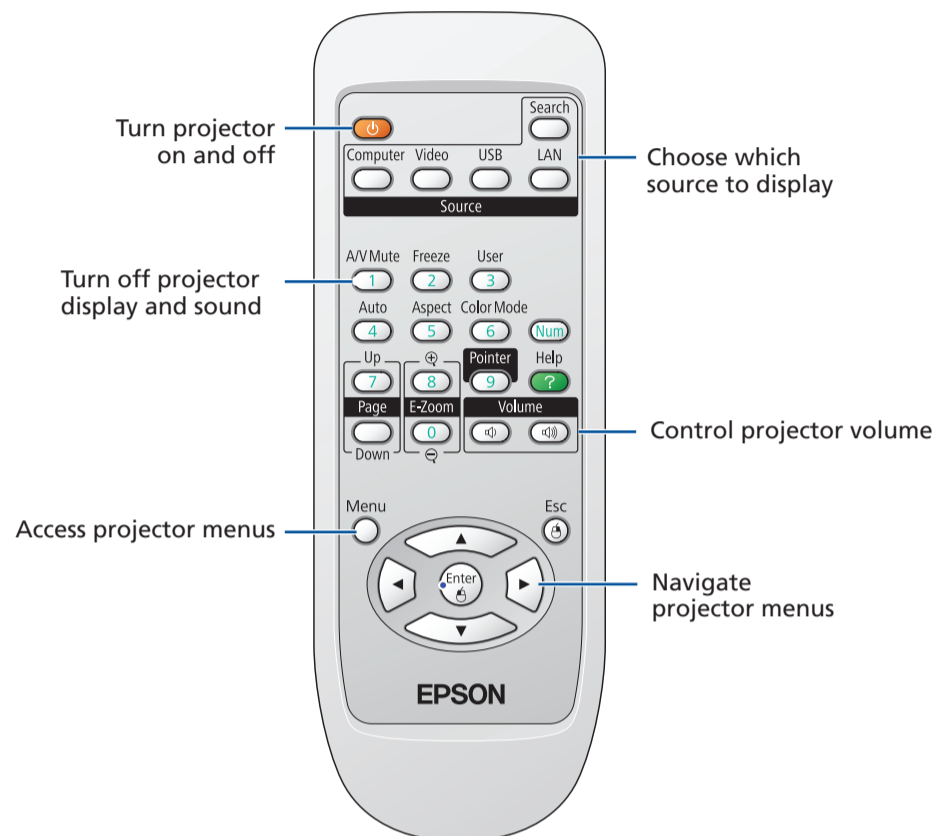
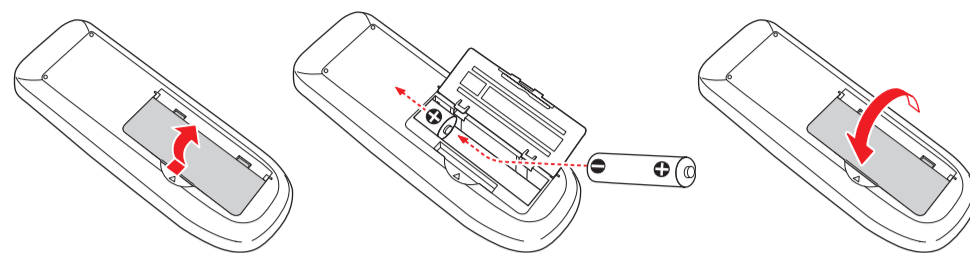


- 5 If your image looks like  or , you've placed the projector off to one side of the screen at an angle. Place it directly in front of the center of the screen, facing the screen squarely.

- 6 If your image looks like  or , press the  or  buttons on the projector to correct it.

Using the remote control

Make sure the batteries are installed as shown (two AA batteries).

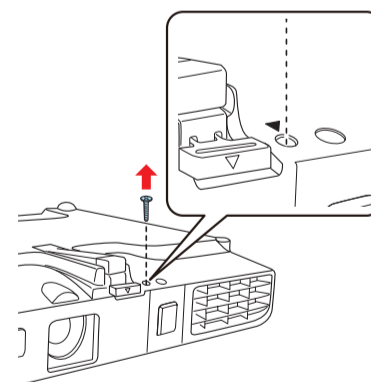


For more information on using the remote control, see the *User's Guide* on your projector CD.

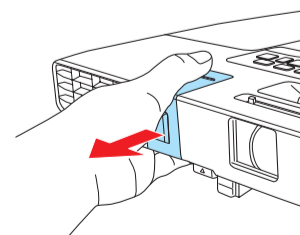
Project wirelessly

Follow the steps here to connect the projector wirelessly over an 802.11g, 802.11b, or 802.11n wireless network. Your computer must have a wireless card or built-in wireless interface, and be running Windows 7, Windows Vista®, Windows XP Professional x64, Windows XP, or Windows 2000, or Mac OS® X 10.3 to 10.6.

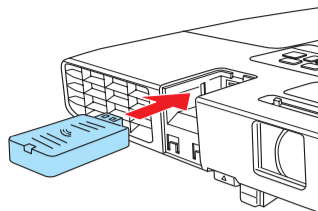
- 1 Turn off the projector and unplug the power cord.
- 2 To install the LAN module, turn the projector over and remove the screw securing the LAN module cover.



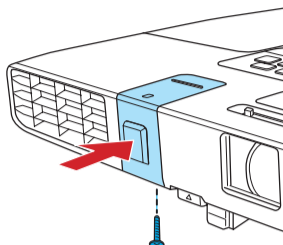
- 3 Remove the wireless LAN module cover.



4 Insert the wireless LAN module into the port.



5 Replace the cover and secure it using the screw.

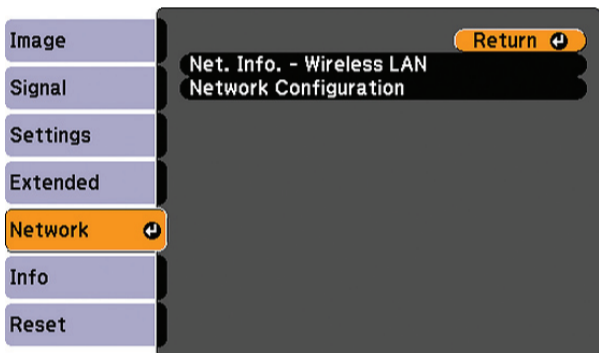


6 Plug in and turn on the projector.

7 To configure your projector for your wireless network, do one of the following:

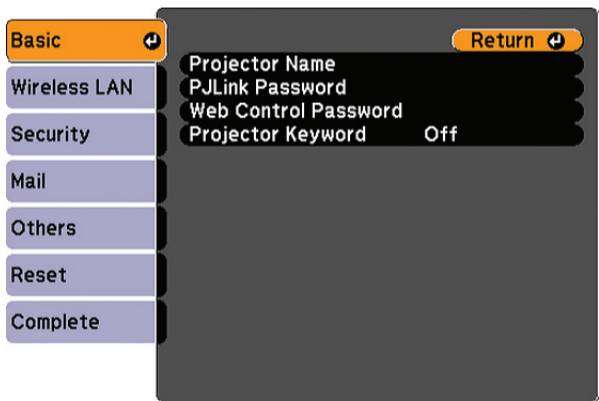
- If you're using the optional Quick Wireless Connection USB key (included with the PowerLite 1775W), insert it into the projector's USB **TypeA** port, wait for the displayed message, remove the key, and connect it to a USB port on your computer. Follow the on-screen instructions to install the driver, then run your presentation. For details, see the *User's Guide* on your projector CD.
- If you're not using the key, continue with these steps.

8 Press the **Menu** button on the remote control, select the **Network** menu, and press **Enter**.



9 Choose **Network Configuration** and press **Enter**.

10 Select the **Basic** menu and press **Enter**.

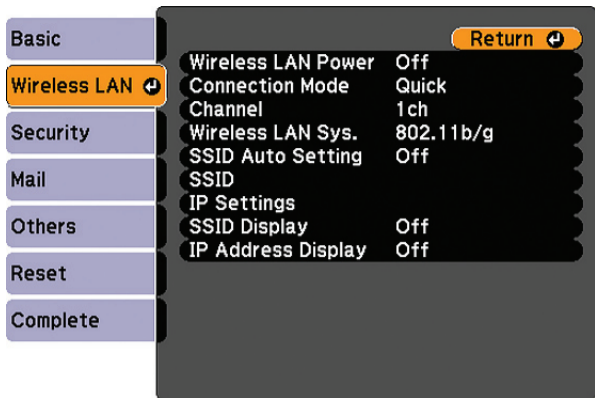


11 Select the **Projector Name** setting and enter a name (up to 16 characters long) to identify your projector over the network.

Use the displayed keyboard to enter characters. Press the arrow buttons on the remote control to highlight the characters and press **Enter** to select them.

Note: See the *User's Guide on the projector CD* for information on adding passwords.

12 Select the **Wireless LAN** menu and press **Enter**.



13 Select the **Connection Mode** setting and choose one of these options:

- **Quick** to connect the projector to one computer on the network
- **Advanced** to connect the projector to multiple computers on the network

14 If you selected **Quick** connection mode, select the **Channel** setting for your wireless network and turn on the **SSID Auto Setting** setting.

15 Select the type of wireless network you are using as the **Wireless LAN Sys.** setting.

16 If you selected **Advanced** connection mode, enter your network SSID (up to 32 characters) as the **SSID** setting.

17 If your network assigns addresses automatically, select **IP Settings** and turn on the **DHCP** setting. If not, turn off the **DHCP** setting and enter the projector's **IP Address**, **Subnet Mask**, and **Gateway Address**, as needed.

18 To prevent the SSID and IP address from appearing on the network standby screen, set the **SSID Display** and/or **IP Address Display** settings to **Off**.

19 See the next section for additional instructions.

Install network software


Install the EasyMP® Network Projection software on each computer that will project over the network. Use the CD labeled *Epson Projector Software for Meeting & Presentation* to install the program.

For instructions on installing and using your network software, see the *EasyMP Network Projection Operation Guide* on your projector CD. This guide is installed along with your projector *User's Guide*.

Troubleshooting


If you see a blank screen...

If you see a blank screen or the **No signal** message after turning on your computer or video device, check the following:

- Make sure the power light on the projector is green and not flashing, and the **A/V Mute** slide is open.
- Press the **Source Search** button on the projector or the remote control to select the computer as the image source.
- If you're using a Windows notebook, press the function key on your keyboard that lets you display on an external monitor. It may be labeled **CRT/LCD** or have an icon such as . You may have to hold down the **Fn** key while pressing it (such as **Fn + F7**).
- On a Macintosh, select the **Mirror Displays** setting as described below.

If the projector and notebook don't display the same image...

Windows

Try using the CRT/LCD or  key as described above. On most systems, this key lets you toggle between the LCD screen and the projector, or display on both at the same time.

If that doesn't work, check your monitor settings to make sure both the LCD screen and the external monitor port are enabled.

- 1 Windows 7:** From the Windows Control Panel, select **Display > Change display settings**.

Windows Vista: Right-click on the desktop and select **Personalize > Display Settings**.

Windows XP: From the Windows Control Panel, select **Display > Settings > Advanced**.

- 2** The method for adjusting the monitor setting varies. You may need to click the **Monitor** tab or icon, and then enable the external monitor port or set it as your primary display. Check the Windows Help utility for details.

Mac OS X

- 1** Select **System Preferences**, then select **Display** or **Displays**.

- 2** Select **Detect Displays**.

- 3 Mac OS X 10.6.x:** Click **Show displays in menu bar**.

Other Mac OS X versions: Select the **VGA Display** or **Color LCD** option, click the **Arrangement** or **Arrange** tab, and check the **Mirror Displays** checkbox. (See your laptop manual for details.)

Where to get help

Manuals

For more information about using the projector, install the manuals from your projector CD. View the guides by clicking the icons for them on your computer desktop.

Telephone Support Services

To use the Epson PrivateLine® Support service, call (800) 637-7661 and enter the PIN on the Epson PrivateLine Support card included with your projector. This service is available 6 AM to 6 PM, Pacific Time, Monday through Friday, for the duration of your warranty period. You may also speak with a projector support specialist by dialing:

(562) 276-4394 (U.S.) or (905) 709-3839 (Canada), 6 AM to 6 PM, Pacific Time, Monday through Friday

Days and hours of support are subject to change without notice. Toll or long distance charges may apply.

Internet Support

Visit www.epson.com/support for solutions to common problems. You can download utilities and documentation, get FAQs and troubleshooting advice, or e-mail Epson.

Registration

Register today to get product updates, special promotions, and customer-only offers. You can use the CD included with your projector or register online at www.epson.com/webreg.

Optional accessories

For a list of optional accessories, see your projector *User's Guide*.

You can purchase screens, carrying cases, or other accessories from an Epson authorized reseller. To find the nearest reseller, call 800-GO-EPSON (800-463-7766). Or you can purchase online at www.epsonstore.com (U.S. sales) or www.epson.ca (Canadian sales).

EPSON®
EXCEED YOUR VISION



Epson and EasyMP are registered trademarks, and Epson Exceed Your Vision is a registered logomark of Seiko Epson Corporation. PowerLite and PrivateLine are registered trademarks of Epson America, Inc.

General Notice: Other product names used herein are for identification purposes only and may be trademarks of their respective owners. Epson disclaims any and all rights in those marks.

This information is subject to change without notice.

© 2010 Epson America, Inc. 8/10
Printed in XXXXXX

CPD-28070