

EasyMP Network Projection Operation Guide

About EasyMP Network Projection

Functions of EasyMP Network Projection	5
Various Screen Transfer Functions	5
Installing the Software	6
Software Requirements.....	6
Installing.....	7

Connecting the Computer and Projector

Two Connection Modes.....	9
Quick Connection Mode.....	9
Advanced Connection Mode	9
Preparing to Connect.....	10
Connecting to a Projector on a Network and Projecting.....	11
Operating the Computer	11
Using the Connection Screen	12
Using the Toolbar	14
Connecting to a Projector on a Different Subnet	17
Specifying Either an IP Address or Projector Name and Performing a Search (Advanced Connection Mode Only)	17
Performing a Search with a Profile	18
Making a Profile	18
Searching by specifying a Profile	19
Managing a Profile.....	20

Various Projection Styles

Projecting Only a PowerPoint Slide Show (Presentation Mode) ..	23
Using Multi-Screen Display	24
Example of Adjusting the Virtual Display	24
Procedure Before Using the Multi-screen Display Function.....	25
Setting the Virtual Display	25
Enable the virtual display driver (Windows only)	25
Adjusting the Virtual Display	26
Allocating the Image to be Projected	30
Projecting the Allocated Images	31

Appendix

Set options	34
General settings tab.....	34
Adjust performance tab	35
Audio Output tab	36
Uninstalling the Software.....	37
Connection Limitations.....	38
Supported Resolutions	38
Display Color.....	38
Other Limitations	38
When Using Windows Vista or Windows 7.....	38
Limitations when projecting from Windows Photo Gallery or Windows Live Photo Gallery.....	39
Limitations in Windows Aero.....	39
Limitations when projecting from Windows Media Center	39

Troubleshooting 40

Cannot connect to the projector you want to use.	40
Cannot connect the projector and the computer via wireless LAN.....	40
Cannot connect the projector and the computer via wired LAN.....	41
Cannot connect the projector and the computer via the network.	41
When a connection is made using EasyMP Network Projection, the projected image remains as it is, and a connection cannot be made from another computer.	42
Cannot select or change the connection mode.....	42
The screen is not projected.....	43
The Slide Show cannot be displayed on the desired display when the multi-screen display function is being executed.	43
Applications are no longer displayed from the computer screen when the multi-screen display function is executed.	43
The mouse cursor is not displayed on the computer screen.....	43
The mouse pointer flickers.....	43
When connecting with EasyMP Network Projection the image is not displayed or the image is slow to appear.....	44
No audio from the projector when connecting with EasyMP Network Projection.....	44
When a connection is made using EasyMP Network Projection, a PowerPoint Slide Show cannot be started.....	44
When a connection has been made using EasyMP Network Projection, the screen will not be refreshed when using an Office application.	45
Error Message List	45
Cannot connect to the projector.....	45
Error message when starting up EasyMP Network Projection	45

Glossary 48**Notices 49**

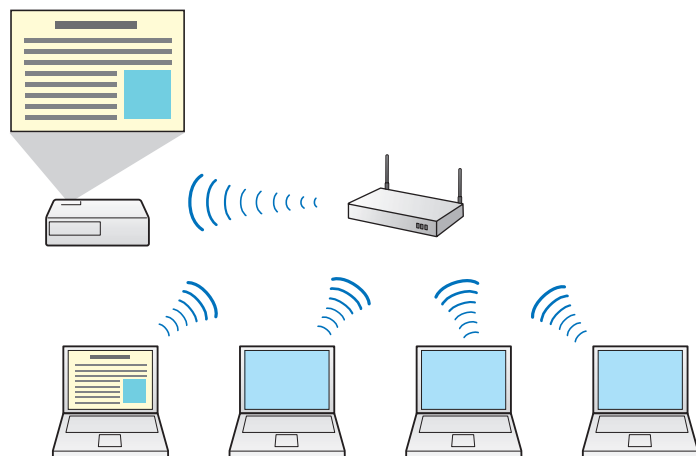
Copyright Notice.....	49
About Notations	49
Trademarks	49

About EasyMP Network Projection

This chapter describes useful functions for EasyMP Network Projection and how to install the software.

Functions of EasyMP Network Projection

You can use EasyMP Network Projection to project your computer screen from the projector via a network. Sharing the projector over the network allows you to project data from different computers without changing the signal cable. Even if the projector is away from the computer, you can still project data via a network.



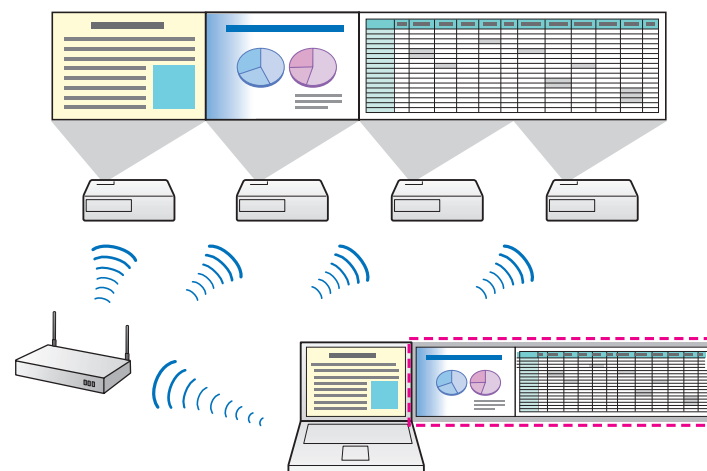
Various Screen Transfer Functions

You can use the following screen transfer functions.

- Multi-screen display

☛ "Using Multi-Screen Display" [p.24](#)

You can use up to four projectors to project a different image from one computer. This allows you to project data such as a report on a landscape screen.



- Presentation Mode

☛ "Projecting Only a PowerPoint Slide Show (Presentation Mode)" [p.23](#)

By using Presentation Mode, you can project only the PowerPoint Slide Show running on your computer. A black screen is projected when the Slide Show is not playing. You can start presentations smoothly without projecting unnecessary images.

- Distribution function

The screen being displayed by a computer can be simultaneously displayed by up to four projectors on the same network.

You cannot connect multiple computers to one projector simultaneously.

Installing the Software

You can find EasyMP Network Projection on the EPSON Projector Software CD-ROM. Install the software on the computer you are using.

Software Requirements

EasyMP Network Projection runs on computers that meet the following requirements.

For Windows

OS	Windows 2000 Service Pack 4 The following 32 bit OS versions: Windows XP Windows XP Service Pack 1 or later Windows Vista Windows Vista Service Pack 1 or later Windows 7 The following 64 bit OS versions: Windows 7
CPU	Mobile Pentium III 1.2GHz or faster Recommended: Pentium M 1.6GHz or faster
Amount of Memory	256MB or more Recommended: 512MB or more
Hard Disk Space	20MB or more
Display	Resolution of no less than XGA (1024x768) and no higher than UXGA (1600x1200) Display color of 16-bit color or greater (approx. 32000 display colors)

For Mac OS

OS	Mac OS X 10.3.x Mac OS X 10.4.x Mac OS X 10.5.1 or later* Mac OS X 10.6.x Recommended: Mac OS X 10.3.9/10.4.11/10.5.8
CPU	PowerPC G3 900MHz or faster Recommended: Core Duo 1.83GHz or faster
Amount of Memory	256MB or more Recommended: 512MB or more
Hard Disk Space	20MB or more
Display	Resolution of no less than XGA (1024x768) and no higher than UXGA (1600x1200) Display color of 16-bit color or greater (approx. 32000 display colors)

* Operation is not guaranteed in Mac OS X 10.5.0 because the Firewall settings are not set correctly when the version is updated.

Installing

Close all running applications before starting installation.

Make sure you check the following points before starting installation.

- Close all running applications before starting installation.
- When the language selected for the installation varies from that of the OS being used, the screens may not be displayed correctly.



For EMP NS Connection users

The name of the software has changed.

Before change: EMP NS Connection

After change: EasyMP Network Projection

When using the same function as EMP NS Connection on the projector, install EasyMP Network Projection after uninstalling EMP NS Connection. Depending on the model, you may not be able to connect to the projector correctly using EMP NS Connection.

For Windows



You need administrator authority to install EasyMP Network Projection.



Turn on your computer.



Insert the EPSON Projector Software CD-ROM into the computer.

The installer starts automatically.



If the installer does not start automatically, open the CD-ROM drive from **My Computer** (or **Computer**), and then double-click **InstallNavi**.



Follow the on-screen instructions to install.

For Mac OS



Turn on your computer.



Insert the EPSON Projector Software CD-ROM into the computer.



Double-click the EMP_NPInstaller.mpkg icon in the EPSON window.

Installation starts.



Follow the on-screen instructions to install.



You can download the latest version of EasyMP Network Projection from www.epson.com and select your location.

Connecting the Computer and Projector

This chapter explains how to connect the computer and the projector via a network, and the procedure for projecting images from your computer's screen with the projector.

Two Connection Modes

There are two methods of connecting a computer and the projector via a network by using EasyMP Network Projection.



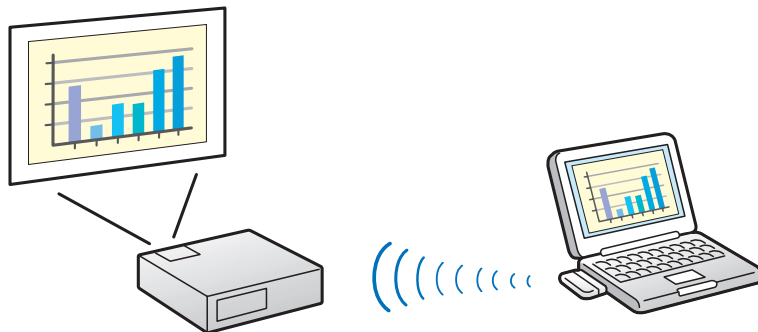
- Depending on the projector model, either wired LAN connection or wireless LAN connection may not be available.
- To use the wireless LAN connection, you need the Wireless LAN unit for the projector.

If the Wireless LAN unit is not supplied with your projector, please purchase the optional accessory. See your projector User's Guide for details on optional accessories.

Quick Connection Mode

Quick Connection Mode is only available when you install the Wireless LAN unit in the projector.

In Quick Connection Mode, you can connect the projector and the computer directly using wireless communication. You can easily project images on the computer without making complex network settings because a wireless LAN access point is not required.

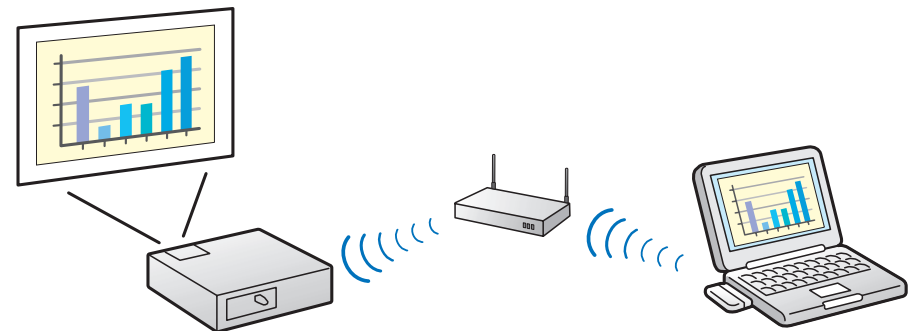


Advanced Connection Mode

Advanced Connection Mode is an infrastructure connection, and connects to an existing network system.

In Advanced Connection Mode, you can connect the projector and the computer via a LAN access point.

When connecting to a network via Wired LAN, connect the projector to the network hub with a commercially available LAN cable.



Preparing to Connect

Follow the steps below to connect the computer and the projector via a network using EasyMP Network Projection.

- 1 Install EasyMP Network Projection on the computer to be connected.**

☞ "Installing" p.7

- 2 Make network settings on the computer and put it into network connection status.**

See the documentation supplied with your the computer, LAN adapter, or AirMac card for details on network settings.



When the computer you are using is normally connected to the network, you do not need to make network settings on the computer.

- 3 For Quick Connection Mode**

Install the Wireless LAN unit to the projector.

For Advanced Connection Mode

Make network settings on the projector and put it into network connection status.

You can make network settings from the projector's **Network** menu.

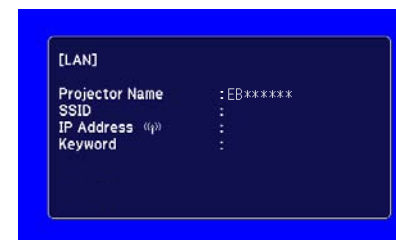
See your projector *User's Guide* for details.



- 4 Press the LAN button on the remote control.**

The LAN standby screen is displayed.

If there is no signal for the current input source, it automatically switches to the LAN source. If it does not automatically switch to the LAN source, press the LAN button.



- 5 Start EasyMP Network Projection on the computer and connect with the projector.**

☞ "Connecting to a Projector on a Network and Projecting" p.11



If a connection error occurs, a number indicating the type of error is displayed as follows.

Event ID: 04xx

See your projector *User's Guide* for details on Event ID.

Operating the Computer

In the following explanations, unless otherwise noted, Windows screen shots are used. Similar screens are displayed on Mac OS.

1 Start EasyMP Network Projection.

For Windows

Click **Start**, select **Programs** (or **All Programs**), **EPSON Projector**, **EasyMP Network Projection**, and then click **EasyMP Network Projection V2.XX**.

For Mac OS

Double-click **EasyMP Network Projection** from the **Applications** folder.

2 Select Quick Connection Mode or Advanced Connection Mode, and then click OK.

☞ "Two Connection Modes" [p.9](#)

The projector search results are displayed. To always connect using the selected connection mode, select **Set the selected Connection Mode as the default mode for future connections**.

3 Select the projector you want to connect to, and then click Connect.

If the projector you want to connect to is not displayed in the search results, click the **Automatic search** button. The search takes about 30 seconds.

See the following section for details on the connection screen.

☞ "Using the Connection Screen" [p.12](#)

4

When Projector Keyword is set to On from the projector, the keyword entry screen is displayed. Enter the keyword displayed on the LAN standby screen, and then click OK.

When the connection is complete, the computer screen is projected. The following EasyMP Network Projection toolbar is displayed on the computer screen. You can use this toolbar to operate the projector and make settings, and to disconnect the network connection. See the following section for details on the toolbar.

☞ "Using the Toolbar" [p.14](#)



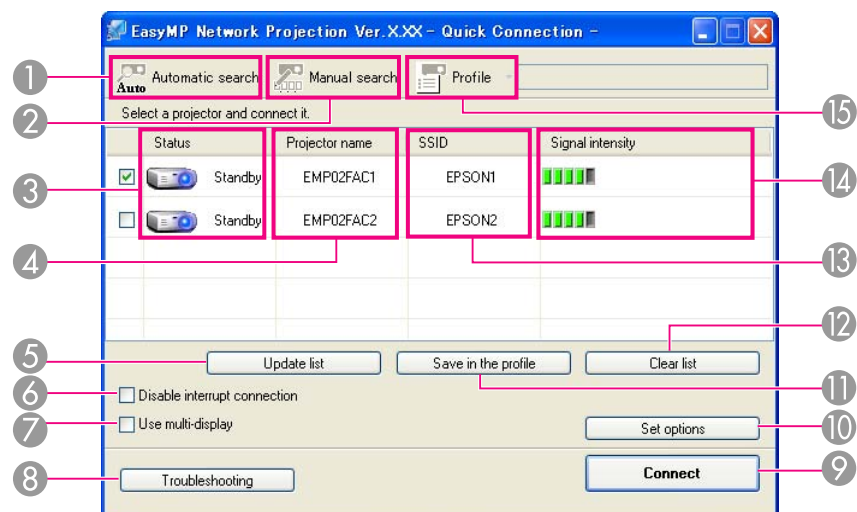
When connecting from another computer, such as when changing presenters, start EasyMP Network Projection from the computer you want to connect. The computer that is currently connected is disconnected, and the projector is then connected with the computer that is trying to connect now.

If a connection is made while **Disable interrupt connection** is set, the connection is not switched to another computer.

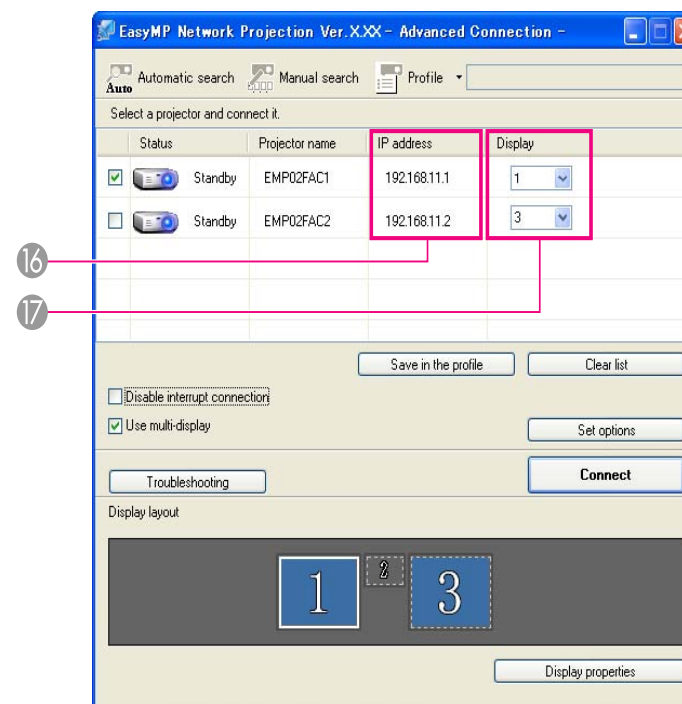
Using the Connection Screen

Start EasyMP Network Projection to display the following screen. The operation of each button or item is described in the following table.

When the system starts in Quick Connection Mode.



When the system starts in Advanced Connection Mode.



1



Automatic search

In Quick Connection Mode, you can search for the projectors based on the SSID.

In Advanced Connection Mode, you can search for available projectors on the network system to which the computer is connected.



2 Manual search

In Quick Connection Mode, you can search for the projector based on the SSID selected from a list.

In Advanced Connection Mode, you can search for a projector based on a specified IP address or projector name.

3 Status

The following six icons indicate the status of the detected projectors.



Standby

Available.



Busy

Available. When you click **Connect**, the computer currently connected is disconnected and your computer is connected.



Busy (Disable interrupt connection)

Cannot be selected. **Disable interrupt connection** is set on another computer which is already connected.



Currently in use by another application

The projector's Configuration menu is open. You can select it after closing the Configuration menu and running the search again.



Searching

Displayed while running Manual search or Profile.



Not found.

Displayed when a projector cannot be found as a result of Manual search or Profile. In Quick Connection Mode, you can only select multiple projectors with the same SSID.

4 Projector name

The projector's name is displayed.

5 Update list (Quick Connection Mode only)

Updates Status and Signal intensity.

6 Disable interrupt connection

Select this to prevent an interrupt connection by other computers while connected to the selected projector.

7 Use multi-display

Select this when using the Multi-screen display function. When this is selected, Display layout and Display properties are displayed at the bottom of the screen.

☞ "Using Multi-Screen Display" [p.24](#)

8 Troubleshooting

If there is a problem and you cannot have a connection, press this button to open the EasyMP Network Projection Troubleshooting screen.

9 Connect

Connect to the projector you selected from the search results list. When a connection is made with a projector, a toolbar is displayed.

10 Set options

You can make option settings such as the processing method when EasyMP Network Projection starts.

☞ "Set options" [p.34](#)

11 Save in the profile

Saves the results of a network projector search as a profile.

☞ "Making a Profile" [p.18](#)

12 Clear list

Deletes all search results.

13 SSID (Quick Connection Mode only)

The projector's SSID is displayed.

14 Signal intensity (Quick Connection Mode only)

As the Signal intensity increases, so does the number of lit indicators.

15 Profile



You can search for a projector on the network using a profile saved using **Save in the profile**.

☞ "Performing a Search with a Profile" [p.18](#)

16 IP address (Advanced Connection Mode only)

The projector's IP address is displayed.

17 Display

Select the display number (when **Use multi-display** is selected).

☞ "Projecting the Allocated Images" [p.31](#)

Using the Toolbar

The toolbar is displayed on the computer screen after EasyMP Network Projection starts and a connection is made with the projector. You can use this toolbar to operate and make settings for the projector.




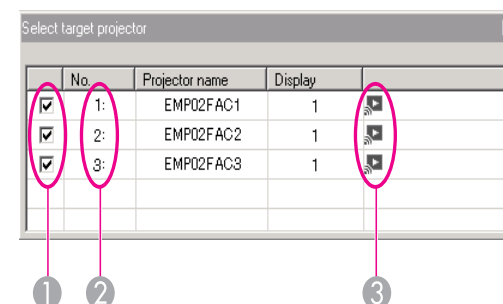
Select target projector

Click to limit the projector operated from the toolbar when projecting from multiple projectors using the distribution function or Multi-screen display. The indication below the icon shows the projectors that can be controlled.

ALL indicates that all of the connected projectors can be controlled.

For example, when "1, 3" is displayed, projectors No. 1 and No. 3 can be controlled.

Click  to display the following screen.



① Select the projector to be controlled.

- ② Indicates the No. of an allocated projector. This No. appears under the icon to indicate the No. of the projector that you can control from the toolbar.

- ③ Indicates the status of the projector.



Stop

Stops projection while connected to the projector. A black screen is projected while stopped.



Show

Releases Stop or Pause.



Pause

Pauses projected images while connecting to the projector.



Presentation Mode


Each time this is clicked, Presentation Mode switches between enabled/disabled.

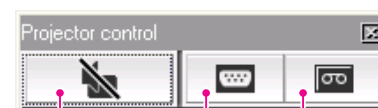
☞ "Projecting Only a PowerPoint Slide Show (Presentation Mode)" [p.23](#)



Projector control

While the projector is connected to the network, the projector's A/V Mute, Switch PC source and Switch video source functions can be controlled from both the remote control and the projector's control panel.

Click  to display the following toolbar.



4



5



6



④ A/V Mute

Turns the video and audio on or off.

⑤ Switch PC source

Changes to images from the port where the signal is being input.


⑥ Switch video source

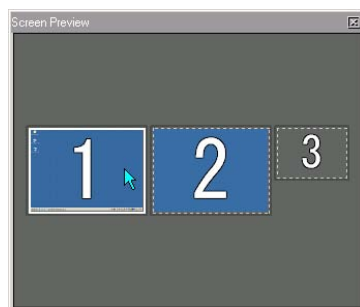
Changes to images from the video input port.



Screen Preview

Displays the multi-screen preview screen.

Click  to display a preview with the settings you have made. Click each display to enlarge each Screen Preview to full-screen.



Set options

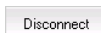
Transmission performance during the transfer of computer images can be adjusted.

☞ "Set options" [p.34](#)



Movie Sending Mode

Used to immediately play back a movie file. If the projector cannot play back movies, the message **The connected projectors do not support Movie Sending.** is displayed.



Disconnect

Disconnects the connection to the projector.



Signal intensity (Quick Connection Mode only)

This is displayed when the connection is made in Quick Connection Mode. As the Signal intensity increases, so does the number of lit indicators.



Switch toolbar display

The toolbar display is switched as follows. The toolbar display remains as is until switched again.

Full



Normal



Simple



Connecting to a Projector on a Different Subnet

You can connect the projector and the computer and project to screens at remote locations (on different subnets).

In Automatic search, projectors on different subnets are not found because searches are only performed on the same subnet.

You can use the following methods to connect to a projector on a different subnet.

- Specify either an IP address or projector name and perform a search.

The IP address can be input directly. Also, provided the projector name to be connected has been registered on the DNS server, you can perform a search simply by inputting that projector name.

☞ "Specifying Either an IP Address or Projector Name and Performing a Search (Advanced Connection Mode Only)" [p.17](#)

- Perform a search based on a Profile.

Once you have performed a search for a projector on a different subnet by specifying either an IP address or a projector name, you can save the search as a profile with an easy-to-remember name, and then use that profile whenever you subsequently want to search for a projector on a different subnet.

☞ "Performing a Search with a Profile" [p.18](#)



- If you cannot find a projector, see the following section for the most likely causes.

☞ "Troubleshooting" [p.40](#)

- When you use Manual search in Quick Connection Mode, you can specify the SSID. When there are a lot of projectors you can narrow the search field by using SSID.

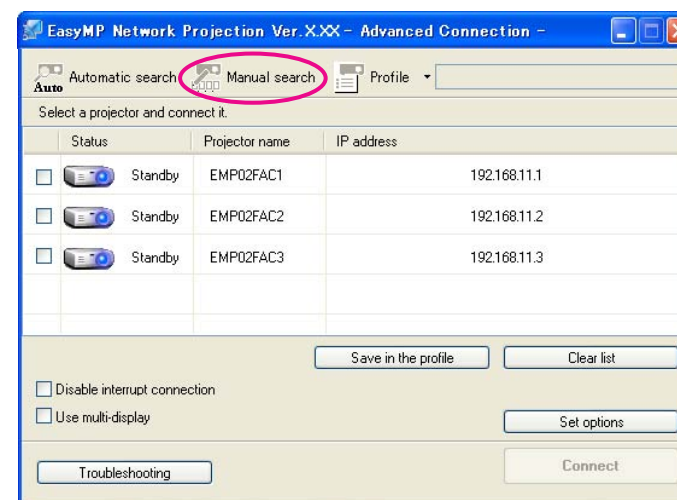
Specifying Either an IP Address or Projector Name and Performing a Search (Advanced Connection Mode Only)

In the following explanations, unless otherwise noted, Windows screen shots are used.

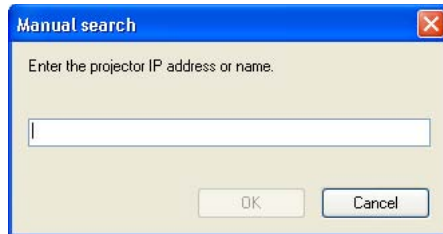
Similar screens are displayed on Mac OS.



Click Manual search on the EasyMP Network Projection projector selection screen.



- 2 Enter the IP address or the projector name for the projector you want to connect to, and click OK.



The search results are displayed on the EasyMP Network Projection projector selection screen. Provided the target projector has been identified, select that projector, and then click **Connect** to establish a connection. Once you have saved projector information as a profile, you do not have to specify the relevant details every time you perform a search.

☞ "Making a Profile" p.18

Performing a Search with a Profile

You can save a search for a frequently used projector as a profile. A profile is a file containing all of the information pertaining to a given projector, such as the projector name, its IP address, and SSID. You can specify a profile to search for a projector instead of specifying relevant details such as the IP address and projector name. For example, by creating a group of profiles for each place where a projector is setup and managing them with folders, the target projector can be found quickly. This section explains how to create and edit a profile.

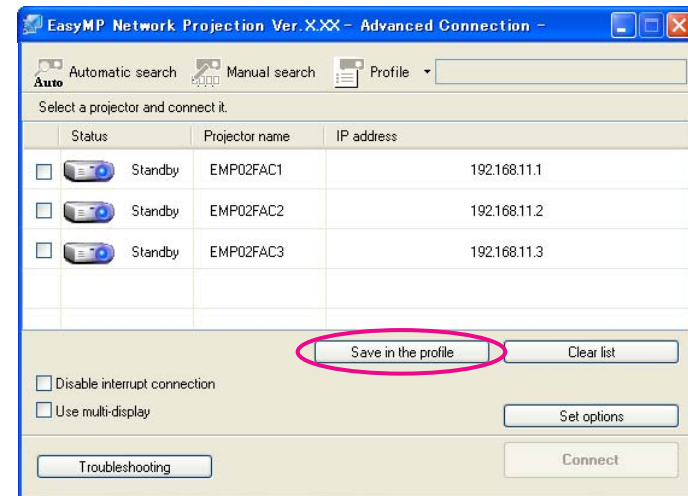
Making a Profile

Profiles are made by saving search results.

For details on how to edit a previously saved profile, see the following section.

☞ "Managing a Profile" p.20

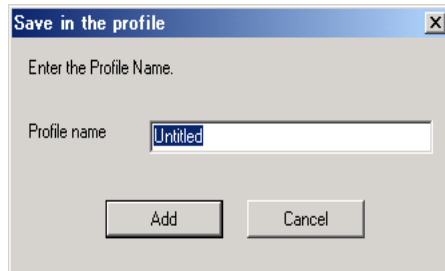
- 1 While the projector is displayed on the EasyMP Network Projection projector selection screen, click Save in the profile.



The Save in the profile screen is displayed.

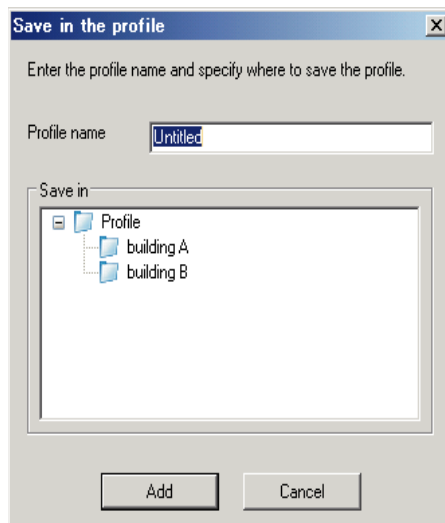
2

Enter a Profile name, and then click Add.

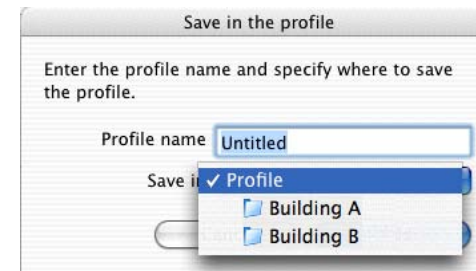


Projector information is registered in the profile. If you have previously saved a profile, you are prompted to confirm whether or not to overwrite. To save a profile with a different name, select **Save as**. If you have created a folder for profiles, one of the following screens is displayed. After entering the Profile name and selecting the **Save in** destination, click **Add**.

For Windows



For Mac OS



For details on how to create a folder for profiles, see the following section.

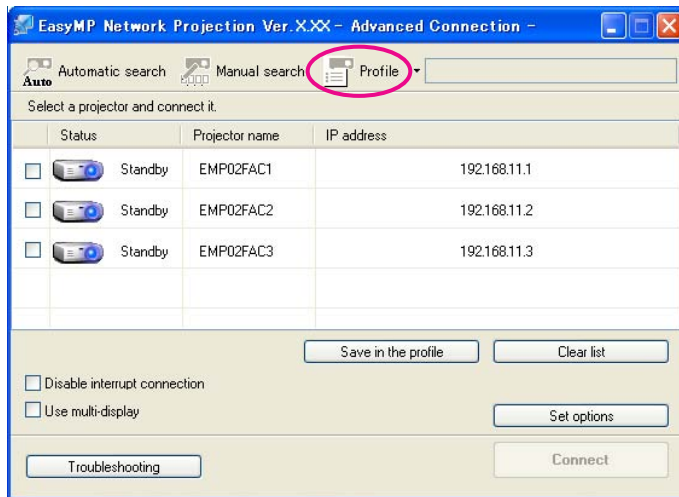
☞ "Managing a Profile" [p.20](#)

Searching by specifying a Profile

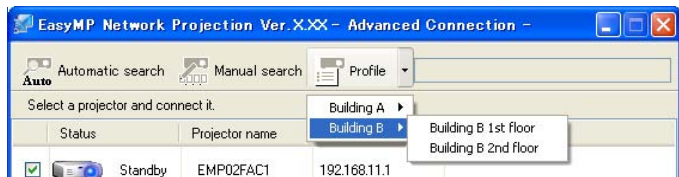
You can search by specifying the profile you created.

- 1 Click **Profile** on the EasyMP Network Projection projector selection screen.

If no profile is registered, you cannot select **Profile**.



- 2 From the menu that is displayed, select the projector you want to connect to.



The search results are displayed on the EasyMP Network Projection projector selection screen.

Provided the target projector has been identified, select that projector, and then click **Connect** to establish a connection.

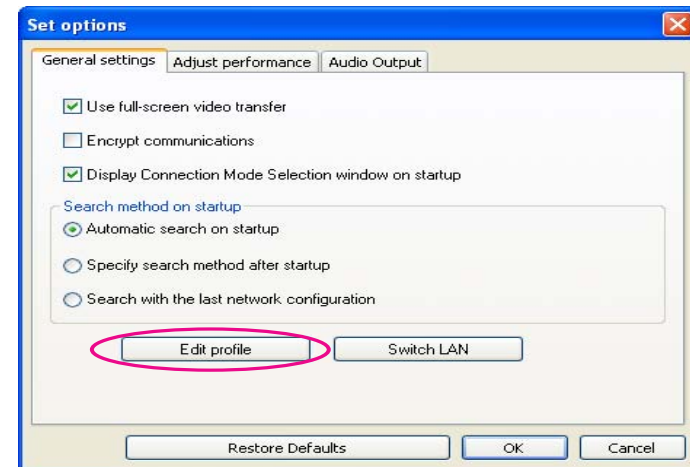
Managing a Profile

You can change the name and the hierarchical structure of the profile.

- 1 Click **Set** options on the EasyMP Network Projection main screen.

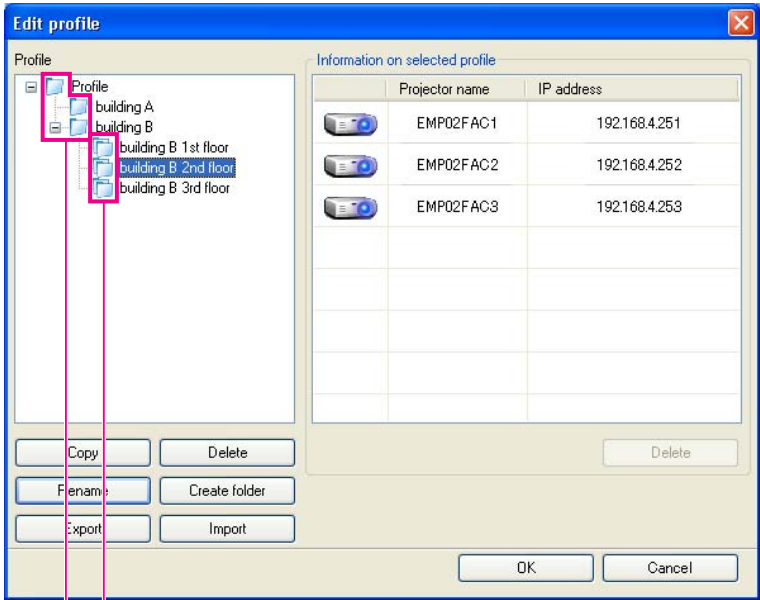
The Set options screen is displayed.

- 2 Click **Edit profile**.



The Edit profile screen is displayed.

3 Edit the contents registered in the profile.



- 1 : Indicates a profile.
- 2 : Indicates a folder.

Profile	
Item	Function
Profile	You can display the registered profile. You can manage it by creating a folder.
Copy	You can copy the profile. The copied profile is saved in the same folder as the original with the same name.
Delete	You can delete the profile and the folder.
Rename	You can display the Rename dialog box to rename the folder or the profile. You can enter up to 32 characters in the Rename dialog box.
Create folder	You can create a new folder.
Export	You can export the profile. Exported profiles can be used as backup files. You can import them with another computer.
Import	You can load an exported profile.

Information on selected profile	
Item	Function
Projector name	The projector information registered in the profile is displayed.
SSID or IP address	
Delete	You can delete the information for the selected projector. When all projector information is deleted, the profile is also deleted.

4 Click OK.

Saves your edits and closes the Edit profile screen.

Various Projection Styles

This chapter explains the functions that may be useful in a meeting or presentation, such as the Multi-Screen Display which allows you to send images to multiple projectors from a single computer.

Projecting Only a PowerPoint Slide Show (Presentation Mode)

By using Presentation Mode, you can project only the PowerPoint Slide Show running on your computer. A black screen is projected when the Slide Show is not playing. You can start presentations smoothly without projecting unnecessary images.

In addition to PowerPoint, Keynote is compatible with Presentation Mode for Mac OS.

To set Presentation Mode to On or Off, click the  button.

☞ "Using the Toolbar" [p.14](#)

Using Multi-Screen Display

Multi-screen display mode allows you to project different images from multiple projectors that are connected to a single computer.

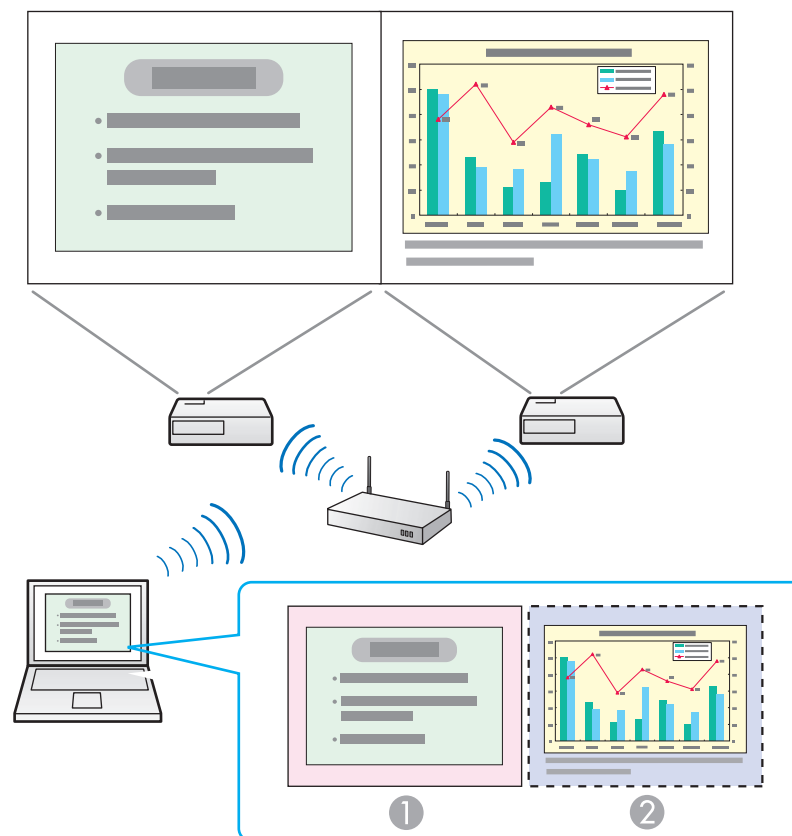
With Windows, multiple virtual display drivers can be set in the computer, and each image can be projected by the projector. This function is not available with Windows Vista and Windows 7.

For Mac OS, an external monitor needs to be connected to the computer to enable this function. While the following explanation refers to virtual display, for Mac OS the operation relates to the screens displayed on the physically connected monitor.

Example of Adjusting the Virtual Display

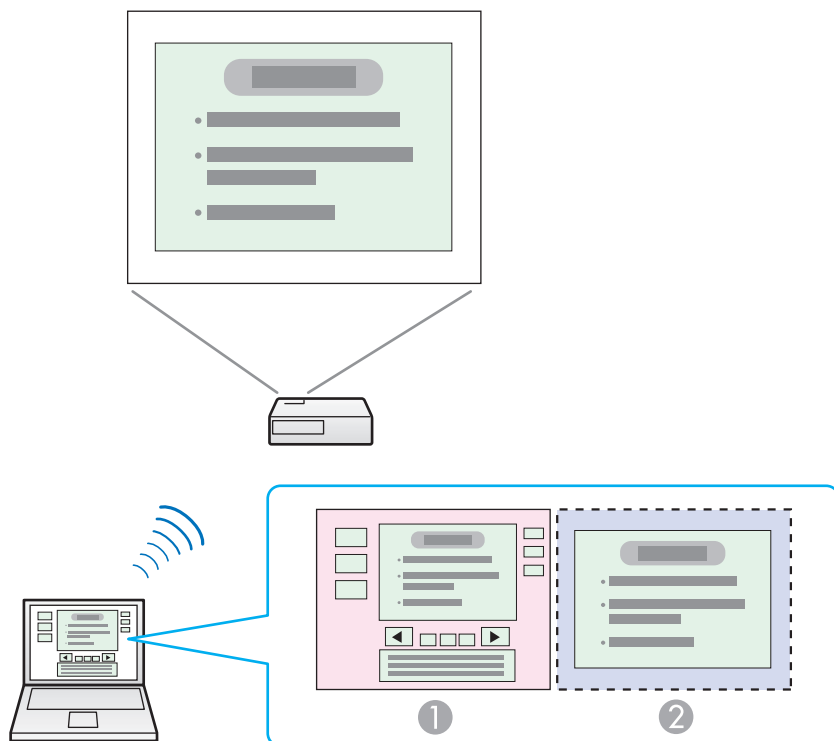
By arranging the virtual display allocation, you can project only the image that you want to show or project different images from left to right in a presentation.

Arrangement example 1



- ① **Actual monitor image** PowerPoint file
- ② **Image of virtual display** Excel file

Arrangement example 2



- ① **Actual monitor image** PowerPoint file presenter tools
- ② **Image of virtual display** Slide Show using a PowerPoint file

Procedure Before Using the Multi-screen Display Function

1

Set the virtual display.

☛ "Setting the Virtual Display" [p.25](#)

In a Windows environment, enable the [virtual display](#) driver as necessary. Also, for both Windows and Mac OS, set up the virtual display arrangement.

2

Allocate the image to be projected.

☛ "Allocating the Image to be Projected" [p.30](#)

Open the file to be projected, and then move the screen to the virtual display according to the actual projection arrangement.

3

Project the allocated images.

☛ "Projecting the Allocated Images" [p.31](#)

Allocate a virtual display number to a projector, and then start projection.

Setting the Virtual Display

This section explains the virtual display for arrangement example 1.

☛ "Example of Adjusting the Virtual Display" [p.24](#)

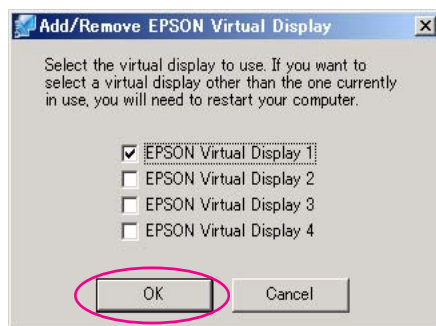
Enable the virtual display driver (Windows only)

Enable the [virtual display](#) driver. If you have already enabled the virtual display while installing EasyMP Network Projection, this operation is not necessary. Go to the following section.

 "Adjusting the Virtual Display" [p.26](#)

- Click Start, select Programs (or All Programs), EPSON Projector, EasyMP Network Projection, and then click Add-Remove EPSON Virtual Display.**

The Add-Remove EPSON Virtual Display screen is displayed.



- Select the virtual display you want to use.**

Up to four monitors can be added. In this example, a single virtual display is to be used. When setting multiple virtual displays, select as many displays as necessary.

Any one of the displays can be selected.

- Click OK.**

When you click **OK**, the drivers for the virtual display are enabled. At this point, it is normal for the display to flicker. Wait for the Add-Remove EPSON Virtual Display screen to close.

Adjusting the Virtual Display

After starting EasyMP Network Projection, the procedure for setting up the virtual displays differs for Windows and Mac OS. The procedures are explained separately below.



Check the following points before starting EasyMP Network Projection when connecting via Wireless LAN. If the following points are not set correctly, Multi-screen display cannot be used.

- *The SSID for the computer and each projector must be the same. (For Quick Connection Mode)*
- *The wireless LAN system for the computer and each projector must be the same.*

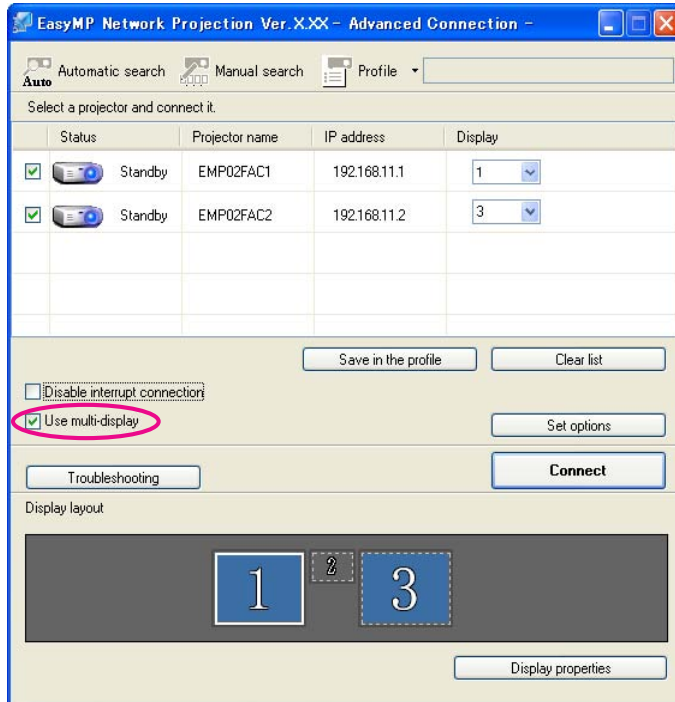
You can modify the SSID and wireless LAN system for the projector from the projector's **Network** menu.

See your projector *User's Guide* for details.

For Windows

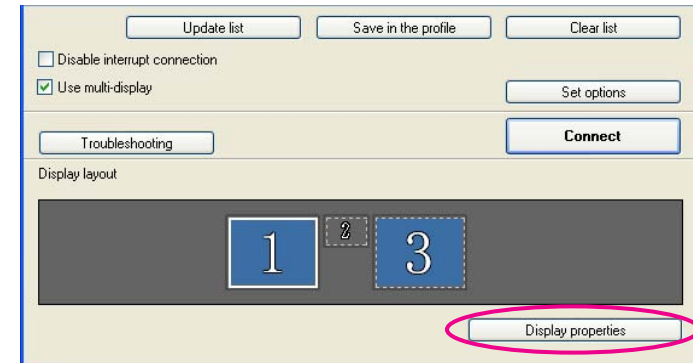
- Click Start, select Programs (or All Programs), EPSON Projector, EasyMP Network Projection, and then click EasyMP Network Projection V2.XX to start EasyMP Network Projection.**
- Select Quick Connection Mode or Advanced Connection Mode, and then click OK.**

3 Select the Use multi-display check box.



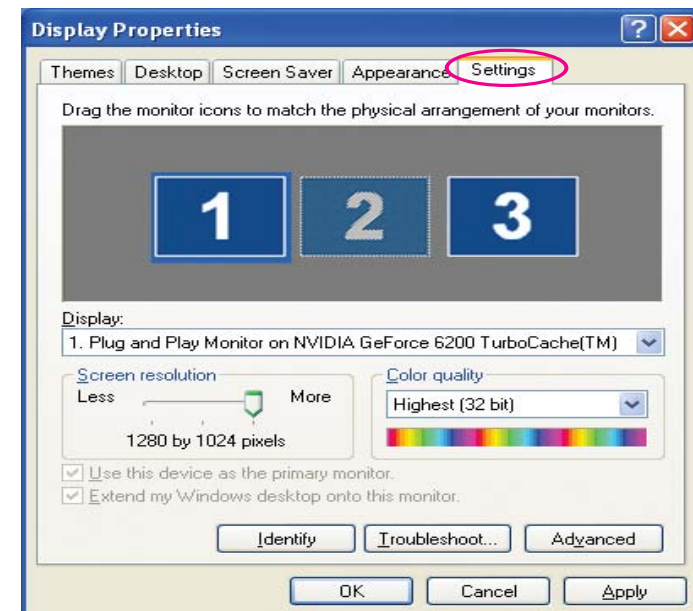
Display layout and Display properties are added at the bottom of the screen.

4 Click Display properties.



The Display Properties screen is displayed.

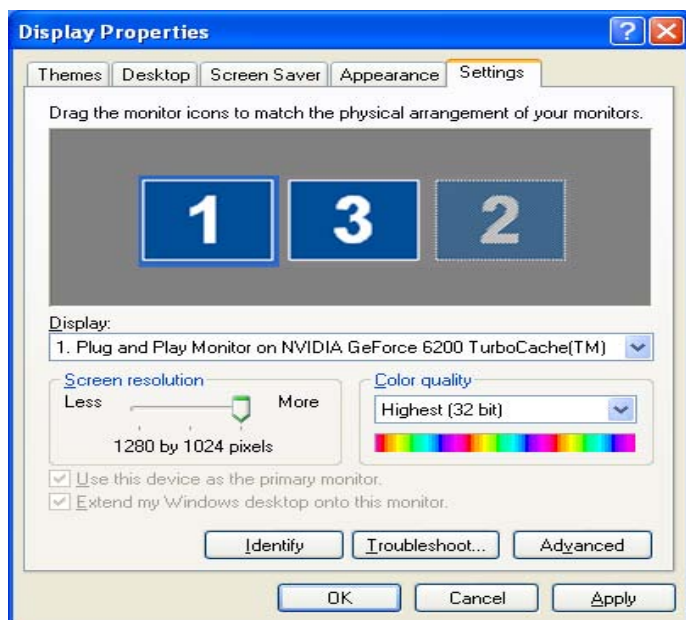
5 Click the Settings tab.



6 Drag the displayed monitor icon and place it where desired.

Here, the actual monitor (1) is placed on the left, while the virtual monitor (3) is placed on the right.

When the PC has multiple display output terminals, the numbers assigned to the virtual terminals will be sequential to those of the physical terminals.

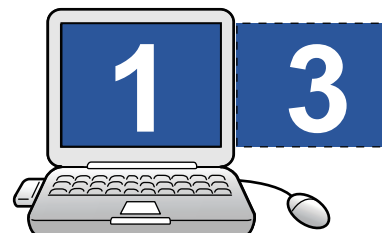


- When an external monitor is connected as a secondary monitor, the image for that screen cannot be projected.
- Depending on the hardware, the number of the secondary monitor may be other than "2". When placing the monitor icons, click the icon to check that the display monitor type is not the secondary monitor.

- For the Screen Resolution settings, see the following.

☞ "Supported Resolutions" [p.38](#)

When the monitor icon is arranged, a virtual display is connected as the image like below.



7 Click OK to close the Display Properties screen.

Allocate the projecting images next.

☞ "Allocating the Image to be Projected" [p.30](#)

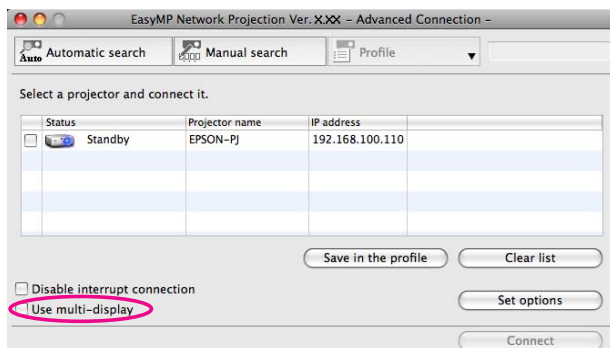
For Mac OS

1 Double-click EasyMP Network Projection from the Applications folder to start EasyMP Network Projection.

2 Select Quick Connection Mode or Advanced Connection Mode, and then click OK.

3

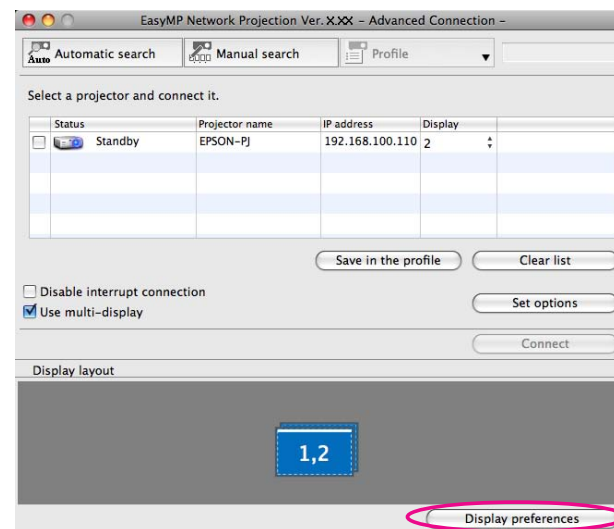
Select the Use multi-display check box.



Display layout and Display preferences are added at the bottom of the screen.

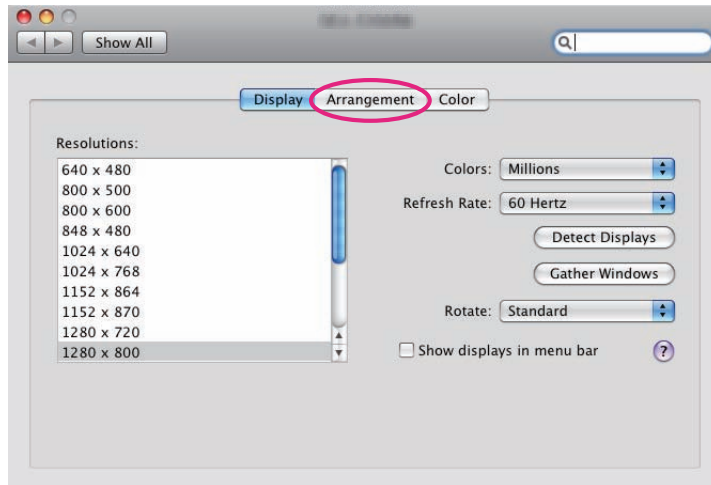
4

Click Display preferences.

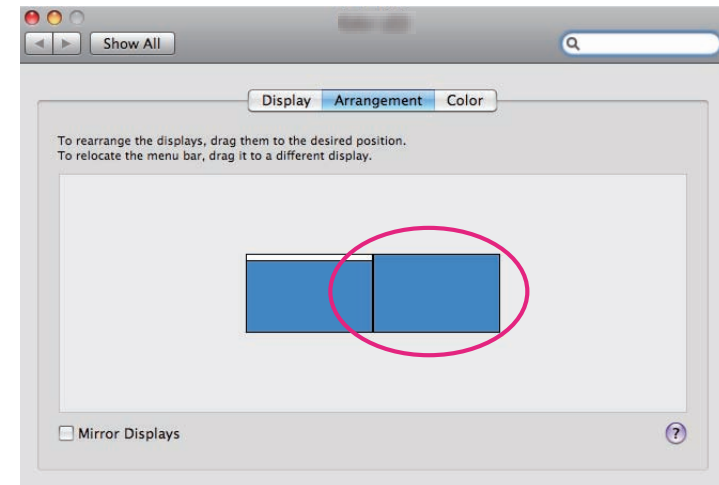


The display setting screen is displayed.

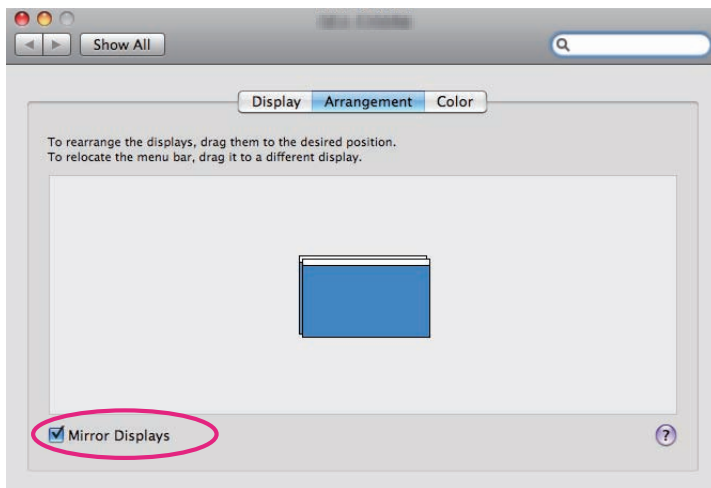
5 Click Arrangement.



7 Drag the displayed monitor icon and place it where desired.



6 Clear the Mirror Displays check box.



8 Close the display setting screen.

Allocate the projecting images next.

☛ "Allocating the Image to be Projected" [p.30](#)

Allocating the Image to be Projected

This section explains the virtual display for arrangement example 1.

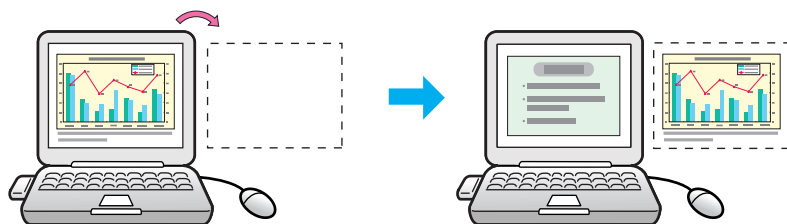
☛ "Example of Adjusting the Virtual Display" [p.24](#)

1 Open the file to be projected.

Open the PowerPoint and Excel files.

- ② **Drag the window to the desired virtual display monitor, and allocate it where the image is to be projected.**

Drag the Excel window to the right until it cannot be seen. The PowerPoint window appears on the actual monitor, while the Excel window appears on the virtual display on the right.

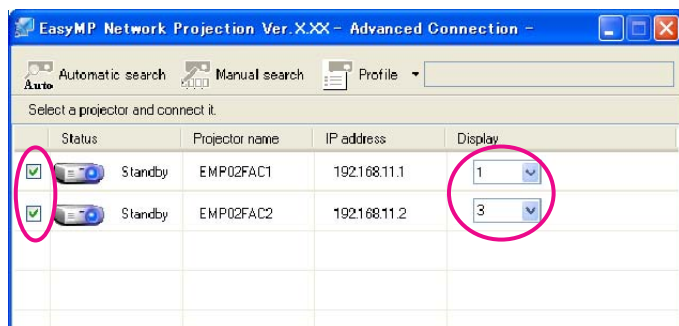


Projecting the Allocated Images

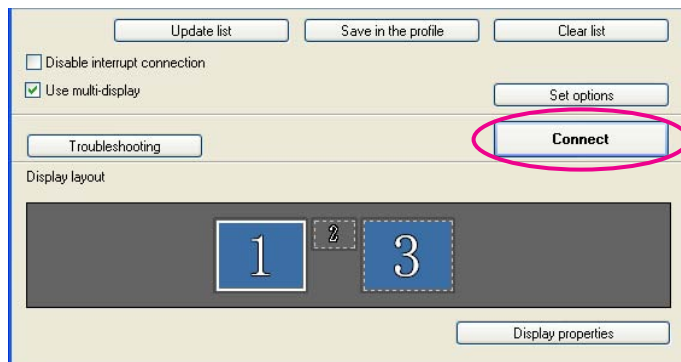
This section explains the virtual display for arrangement example 1.

☞ "Example of Adjusting the Virtual Display" [p.24](#)

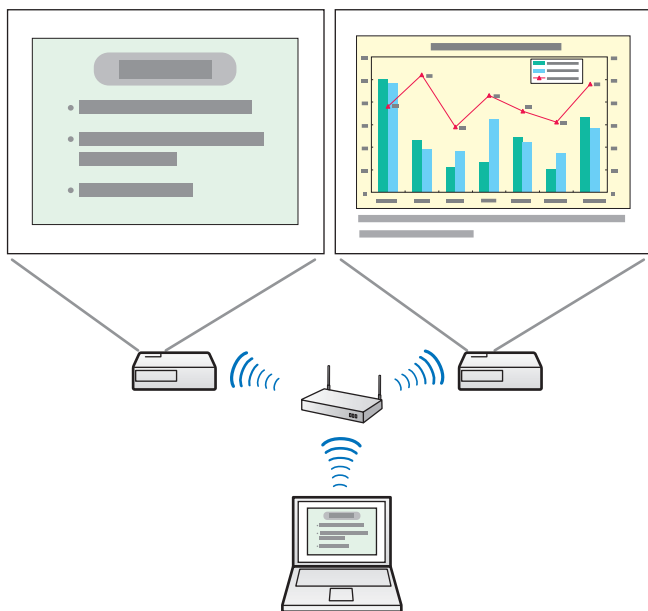
- ① **Select the number of the virtual display to allocate on the Display, and set which image to be projected from which projector.**



2 Click Connect.



The image allocated to each projector is projected.



In a Windows environment, you cannot view the image being sent to a virtual display on the computer. To adjust the image on the virtual display, you must do so while viewing the projected image. To perform mouse-based operations on the virtual display, move the mouse pointer in the direction of the virtual display so that the pointer appears on the virtual display.

3 To end projection for multi-screen display, click Disconnect on the toolbar.



In a Windows environment, if the virtual display driver has been enabled so that the mouse pointer can be moved outside the limits of the screen, there may be occasions when you lose track of the location of the pointer. If you are not using a virtual display, clear the virtual display checkbox on the Add-Remove EPSON Virtual Display screen so that the mouse pointer moves back inside the screen's display area. To subsequently use multi-display again, place a check mark against the required display under Add-Remove EPSON Virtual Display. To clear a check mark, see the following.

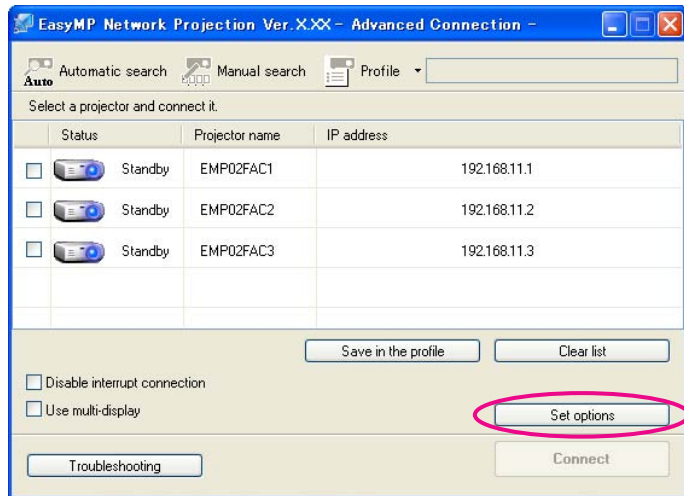
☞ "Enable the virtual display driver (Windows only)" [p.25](#)

Appendix

Set options

You can make option settings such as the processing method when EasyMP Network Projection starts.
Access Set options from the main screen of EasyMP Network Projection.

- 1 **Click Set options on the EasyMP Network Projection main screen.**




The Set options screen is displayed.

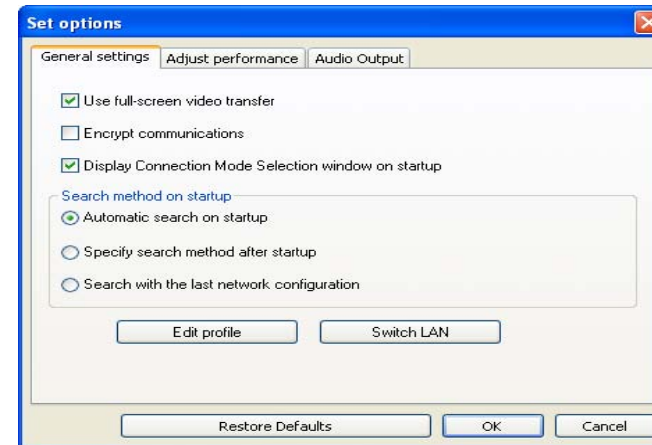
- 2 **Set each of the items.**

Confirm the details of the set items in the following sections. When you have made all the necessary settings, click **OK** to close the Set options screen.




You can also access Set options by clicking  on the toolbar. When you access Set options from toolbar, the General settings tab is not displayed.

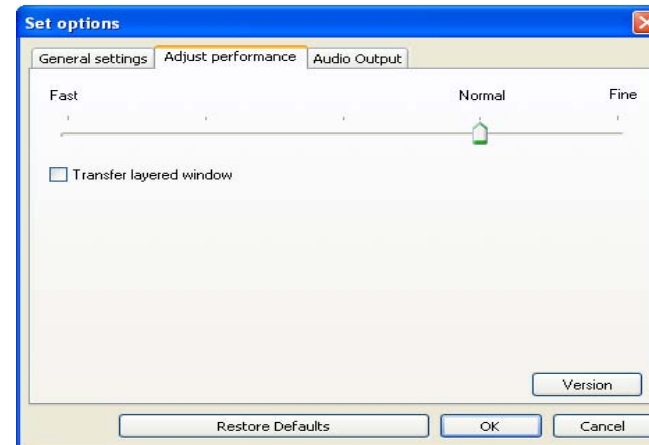
General settings tab



Use full-screen video transfer	Plays back a movie file at full screen. If the projector does not support movie sending, this function cannot be set.
Encrypt communications	Select to Encrypt and transmit data. Even if data is intercepted, it cannot be decrypted. When using Quick Connection Mode, make sure you always select this checkbox.
Display Connection Mode Selection window on startup	Set whether or not the Quick Connection Mode/Advanced Connection Mode screen is displayed when EasyMP Network Projection starts. Clear this checkbox once you have settled on a regular startup method.

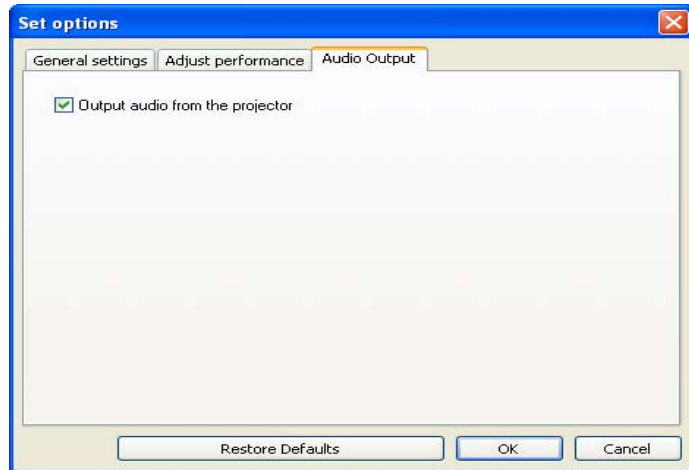
Search method on startup	<p>Select from the following projector search methods executed when EasyMP Network Projection is started.</p> <p>Automatic search on startup</p> <p>Specify search method after startup</p> <p>Search with the last network configuration</p>
Edit profile	<p>The Edit profile dialog box is displayed.</p> <p> "Managing a Profile" p.20</p>
Switch LAN	<p>Windows only</p> <p>This is used when it is necessary to switch the network adapter to be used for a search when a computer has multiple adapters.</p> <p>By default, all of the network adapters are used to perform a search.</p>
Restore Defaults	<p>You can reset all adjustment values for Set options to their default settings. However, you can retain settings for Edit profile and Switch LAN in General settings.</p>

Adjust performance tab



Performance adjustment slider	<p>The performance can be set to Fast, Normal, and Fine.</p> <p>Set to Fast when movie projections are interrupted.</p>
Transfer layered window	<p>Windows only (excluding Windows Vista and Windows 7)</p> <p>The layered window is in use when contents such as messages displayed on the computer are not projected by the projector. Select this checkbox to project contents such as messages that use the layered window.</p> <p>Clear this check box if you do not want the mouse pointer to flicker on the screen.</p>
Restore Defaults	<p>You can reset all adjustment values for Set options to their default settings. However, you can retain settings for Edit profile and Switch LAN in General settings.</p>

Audio Output tab



Output audio from the projector	Select when you want to output the computer's audio from the projector. Clear to output audio from the computer.
Restore Defaults	You can reset all adjustment values for Set options to their default settings. However, you can retain settings for Edit profile and Switch LAN in General settings .



Audio can only be transferred to one projector. Audio cannot be transferred when connected to multiple projectors.

Uninstalling the Software

Make sure you check the following points before starting uninstallation.

- For Windows, you need administrator authority to uninstall EasyMP Network Projection.
- Close all running applications before starting uninstallation.

For Windows 2000

- 1 Click Start, select Settings, and then click Control Panel.
- 2 Double-click Add/Remove Programs.
- 3 Click Change or remove program.
- 4 Select EasyMP Network Projection, and then click Change/Remove.

For Windows XP

- 1 Click Start, and then click Control Panel.
- 2 Double-click Add or Remove Programs.
- 3 Select EasyMP Network Projection, and then click Change/Remove.

For Windows Vista/Windows 7

- 1 Click Start, and then click Control Panel.
- 2 Click Uninstall a program from the Program category.
- 3 Select EasyMP Network Projection, and then click Uninstall/Change.


For Mac OS




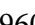
- 1 Open the Applications folder.
- 2 Open the EasyMP Network Projection folder, and then double-click EasyMP Network Projection Uninstaller.app to uninstall the software.

Connection Limitations

When projecting computer images while running EasyMP Network Projection, the following restrictions apply. Confirm these points.

Supported Resolutions

The following computer screen resolutions can be projected. You cannot connect to a computer with a resolution greater than UXGA .

- VGA  (640x480)
- SVGA  (800x600)*
- XGA  (1024x768)*
- SXGA  (1280x960)
- SXGA (1280x1024)*
- SXGA+ (1400x1050)*
- WXGA (1280x768)
- WXGA (1280x800)
- WXGA+ (1440x900)
- UXGA (1600x1200)

* Supported resolutions when multi-screen display function is on.

When using a computer screen with a unique aspect ratio, depending on the resolution of the computer and the projector, the resolution is increased or decreased so as not to impair the image quality.

Depending on the resolution, at times the vertical or horizontal margins may be projected in black.

Display Color

The number of colors for computer screens that can be projected.

Windows	Mac OS
16-bit color	About 32,000 colors (16-bit)
32-bit color	About 16.7 million colors (32-bit)

The operational guarantee for multi-screen display is 16-bit and 32-bit color.

Other Limitations

- If the transmission speed of the wireless LAN is low, the network might be cut off unexpectedly.
- Applications that use part of DirectX functions may not be displayed correctly. (Windows only)
- Cannot project full screen MS-DOS prompts. (Windows only)
- There are times when the image on the computer screen and the image projected by the projector may not match exactly.

When Using Windows Vista or Windows 7

Note the following points when using EasyMP Network Projection on a computer running Windows Vista or Windows 7.

Limitations when projecting from Windows Photo Gallery or Windows Live Photo Gallery

Note the following two limitations when launching Windows Photo Gallery or Windows Live Photo Gallery when EasyMP Network Projection is running.

- Slideshow is played back in simple mode when projecting from Windows Photo Gallery or Windows Live Photo Gallery.

Because the toolbar is not displayed, you cannot change the Theme (effects) while playing a slide show, regardless of the Windows Experience Index rating.

Once simple mode has started, you cannot change modes while Windows Photo Gallery or Windows Live Photo Gallery is running even if you close EasyMP Network Projection. Restart Windows Photo Gallery or Windows Live Photo Gallery.

- You cannot play movies.

Limitations in Windows Aero

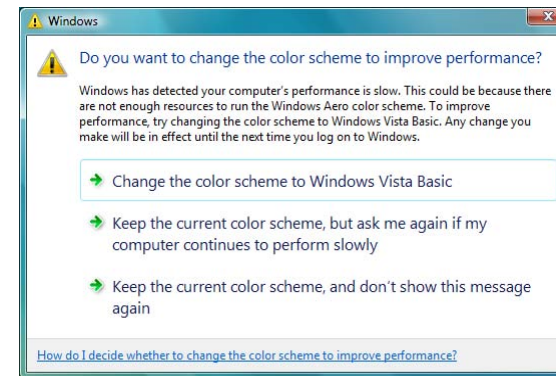
Note the following two limitations when the window design for your computer is Windows Aero.

- The layered window is projected regardless of Transfer layered window from Set options in EasyMP Network Projection.

For example, when Transfer layered window for the EasyMP Network Projection toolbar is disabled, it is not projected even if it is displayed on the computer screen, however the toolbar is projected.

- A few minutes after you connect a computer to the projector over a network with EasyMP Network Projection, the following message may be displayed.

It is recommended that you select **Keep the current color scheme, and don't show this message again**. This selection is enabled until the computer is restarted.



Limitations when projecting from Windows Media Center

You cannot project images in full screen display using Windows Media Center. Switch to the window display mode to project the images.

Cannot connect to the projector you want to use.

Cannot connect the projector and the computer via wireless LAN.

Check	Remedy
Is the Wireless LAN unit connected?	Check that the Wireless LAN unit is securely connected.
Is the SSID the same as that of the access point? (For Quick Connection Mode)	Set an SSID that is different from that of the access point. You can make the SSID setting from the projector's Network menu. See your projector <i>User's Guide</i> for details.
Is the DHCP function for Wired LAN turned On? (For Quick Connection Mode)	Set the DHCP setting to Off from Wired LAN in the Configuration menu. See your projector <i>User's Guide</i> for details.
Is the wireless LAN setting enabled when the computer is in power save mode?	Enable the wireless LAN.
Are there any obstacles between the access point and the computer or projector?	Sometimes the indoor environment prevents the projector from being found in a search. Check for any obstacles between the access point and the computer or projector, and change their position to improve the communication.
Is the computer's wireless LAN radio strength set to low?	Set the radio strength to maximum.
Does the wireless LAN system meet the supported specifications?	Check the wireless LAN system. See your projector <i>User's Guide</i> for details on the projector's wireless LAN system.
Is the Wireless LAN Power set to Off in the projector's Configuration menu?	Set Wireless LAN Power to On in the Wireless LAN menu from the Configuration menu. See your projector <i>User's Guide</i> for details on the projector's wireless LAN settings.
Is the AirMac setting for Mac OS correct?	Check that AirMac is set to on. Or, check whether an appropriate access point has been selected.
Is the same WEP key set?	When selecting WEP from Security , set the access point, the computer, and the projector to the same WEP key. See your projector <i>User's Guide</i> for details on the WEP key.

Cannot connect the projector and the computer via wired LAN.

Check	Remedy
Are the computer's LAN card and the built-in LAN function available?	Check that LAN is available from the device manager under Control Panel - System - Hardware .
Is the network cable connected correctly?	Check that the network cable is connected correctly. Reconnect it if it is not connected or not connected properly.

Cannot connect the projector and the computer via the network.

Check	Remedy
Is the network configuration screen displayed on the projector?	Close network settings on the projector, and return to the LAN standby screen. If the network configuration screen is displayed on the projector, you cannot connect using EasyMP Network Projection.
Was the network adapter used selected correctly with EasyMP Network Projection?	If the computer has multiple LAN environments, it cannot connect unless the network adapter is selected correctly. When using a computer running Windows, start EasyMP Network Projection and select the network adapter you are using from Set options - Switch LAN . ☞ "General settings tab" p.34
Is the firewall turned off, or has the firewall been registered as an exception?	When you do not wish to turn off the firewall or register the firewall as an exception, make the necessary settings to open the ports. The ports used by EasyMP Network Projection are "3620", "3621", and "3629".
Is the SSID setting different? (For Advanced Connection Mode)	Set the computer, the access point, and the projector to the same SSID. You can make the SSID setting from the projector's Network menu. See your projector <i>User's Guide</i> for details.
Are the connection denial functions, such as <u>MAC Address</u> restrictions and port restrictions, set correctly at the access point? (For Advanced Connection Mode)	Set connection permission at the access point to allow projectors to connect.

Check	Remedy
Are the IP address, the subnet mask, and the gateway address for the access point and the projector set correctly? (For Advanced Connection Mode)	When not using a DHCP, adjust each setting. You can make the DHCP setting from the projector's Network menu. See your projector <i>User's Guide</i> for details.
Are the access point and the projector's subnet different? (For Advanced Connection Mode)	Select Manual search from EasyMP Network Projection, specify the IP address, and connect. ☞ "Specifying Either an IP Address or Projector Name and Performing a Search (Advanced Connection Mode Only)" p.17
Have you enabled DHCP? (For Advanced Connection Mode)	When DHCP is set to On in Advanced Connection Mode, it may take some time to enter LAN standby status if an available DHCP server is not found.

When a connection is made using EasyMP Network Projection, the projected image remains as it is, and a connection cannot be made from another computer.

Check	Remedy
Did the presenter leave the conference room without cutting off the network connection?	With EasyMP Network Projection, the computer currently connected can be disconnected when another computer tries to connect to the projector. Therefore, when a Projector Keyword is not set for the projector, or if you know the Projector Keyword, you can disconnect the computer currently connected and then connect your computer to the projector. When a Projector Keyword is set for the projector and you do not know the Projector Keyword, restart the projector and reconnect.

Cannot select or change the connection mode.

Check	Remedy
Is EasyMP Network Projection set to start up using the same connection mode?	Select Display Connection Mode Selection window on startup on the General settings tab from Set options . The projector selection screen is displayed after restarting EasyMP Network Projection.

The screen is not projected.

The Slide Show cannot be displayed on the desired display when the multi-screen display function is being executed.

Check	Remedy
Are you using PowerPoint 2002 or an earlier version? (For Windows)	To set and use two or more virtual displays », use PowerPoint 2003 or later, or limit the number of virtual displays to one before displaying the Slide Show.

Applications are no longer displayed from the computer screen when the multi-screen display function is executed.

Check	Remedy
Is another application running on the virtual display »? (For Windows)	When EPSON Virtual Display is installed, another application sometimes runs on the virtual display. In this case, set EPSON Virtual Display to off in Screen properties.

The mouse cursor is not displayed on the computer screen.

Check	Remedy
Is EPSON Virtual Display installed? (For Windows)	The mouse cursor was moved onto the virtual display ». When the virtual display checkbox is cleared on the Add-Remove EPSON Virtual Display screen, the mouse pointer returns to the screen display area.

The mouse pointer flickers.

Check	Remedy
Is Transfer layered window selected?	If you do not want the mouse pointer to flicker, clear the Transfer layered window check box on the Adjust performance tab. ☞ "Adjust performance tab" p.35

When connecting with EasyMP Network Projection the image is not displayed or the image is slow to appear.

Check	Remedy
Did you try to play back movies with Media Player or try to operate the screen saver preview?	Depending on the computer, the movie playback screen in Media Player may not be displayed, and the screen saver preview may not be displayed normally.
Is WEP encryption effective, or are multiple projectors connected?	The display speed decreases when WEP encryption is effective or multiple projectors are connected.
Is wireless LAN 802.11b/g being used in Quick Connection Mode?	Depending on the electromagnetic wave environment, there are times when the image and sound for movies may stop.

No audio from the projector when connecting with EasyMP Network Projection.

Check	Remedy
Are multiple projectors connected to one computer?	Audio can only be transferred to one projector. Try disconnecting other projectors.
Is audio set to output from the computer in Set Options?	Select Output audio from the projector on the Audio Output tab. ☞ "Audio Output tab" p.36

When a connection is made using EasyMP Network Projection, a PowerPoint Slide Show cannot be started.

Check	Remedy
Was EasyMP Network Projection started while PowerPoint was running? (For Windows)	When connecting with EasyMP Network Projection, make sure you close PowerPoint first. Slide Show might not run if connecting while PowerPoint is running.

When a connection has been made using EasyMP Network Projection, the screen will not be refreshed when using an Office application.

Check	Remedy
Is the mouse moved continuously?	When you stop moving the mouse cursor, the screen is updated. If the screen does not update quickly, stop moving the mouse cursor.

Error Message List

Cannot connect to the projector.

Error Messages	Remedy
Cannot connect to the projector using this version of EasyMP Network Connection. Install the latest version of EasyMP Network Projection.	Install the current version of EasyMP Network Projection from the EPSON Projector Software CD-ROM supplied with the projector. You can download the latest version of EasyMP Network Projection from www.epson.com and select your location.

Error message when starting up EasyMP Network Projection

Error Messages	Remedy
Connection to the projector failed.	Try to connect again. If you still cannot connect to the projector, check the network settings on the computer and the network settings for the projector. You can make network settings from the projector's Network menu. See your projector <i>User's Guide</i> for details.
The keyword does not match. Re-enter the keyword displayed on the projector screen.	Check the Projector Keyword displayed on the LAN standby screen, and enter the Projector Keyword.

Error Messages	Remedy
The selected projector is busy. Do you want to continue the connection process?	<p>You tried to connect to a projector that is connected to another computer.</p> <p>When Yes is clicked, it connects to the projector. The connection between the projector and the other computer is cut off.</p> <p>When No is clicked, it does not connect to the projector. The connection between the projector and the other computer is maintained.</p>
EasyMP Network Projection initialization failed.	<p>Restart EasyMP Network Projection. If the message still appears, uninstall and then reinstall EasyMP Network Projection.</p> <p>☞ "Installing" p.7</p>
Connection failed due to keyword mismatch.	<p>When connecting to a projector for which a Projector Keyword has been set, the wrong Projector Keyword is entered.</p> <p>Check the Projector Keyword that is displayed on the LAN standby screen.</p> <p>☞ "Operating the Computer" p.11</p>
Network adapter information could not be obtained.	<p>Check the following point.</p> <ul style="list-style-type: none"> • Is a network adapter installed on the computer? • Is the driver for the network adapter used installed on the computer? • Is the network adapter enabled? <p>After checking, restart the computer and connect again.</p> <p>If you still cannot connect, check the following.</p> <p>Check the network settings on the computer and the network settings on the projector.</p> <p>You can make network settings from the projector's Network menu.</p> <p>See your projector <i>User's Guide</i> for details.</p>
One or more connected projectors do not support resolutions greater than SXGA. Reduce the screen resolution and reconnect.	<p>There is an incompatible projector in the connection destination. Change the computer screen resolution to SXGA (1280x1024) or less.</p>
One or more projectors are not responding.	<p>Failed to simultaneously connect to one or more of the projectors that you attempted to connect to. Check the network settings on the computer and the network settings on the projector.</p> <p>You can make network settings from the projector's Network menu.</p> <p>See your projector <i>User's Guide</i> for details.</p>

Error Messages	Remedy
Enter the keyword displayed on the projector screen.	Check the Projector Keyword displayed on the LAN standby screen, and enter the Projector Keyword.
Cannot start this application while USB Display is running.	Close USB Display and then start EasyMP Network Projection.
To output audio from the projector, restart applications such as PowerPoint or Windows Media Player.	After restarting PowerPoint or Windows Media Player, audio is output from the projector.
You need to restart your computer to enable Audio Output. Select "Yes" to restart now or select "No" to restart later.	To transfer audio to the projector and play back, select Yes and restart the computer.
Cannot start this application while Quick Wireless Connection is running.	Close Quick Wireless Connection and then start EasyMP Network Projection.
The wireless LAN is off. Turn on the wireless LAN, and then try searching again.	Turn on your computer's wireless LAN, and then try searching for the projector again.

Glossary

This section briefly explains the difficult terms that are not explained in the text of this guide. For details, refer to other commercially available publications.

MAC Address	An abbreviation of Media Access Control. The MAC Address is an ID number unique to each network adapter. A unique number is assigned to each network adapter, and data is transmitted between network adapters based on this identification.
VGA	A screen size standard with a resolution of 640 (horizontal) × 480 (vertical) dots.
SVGA	A screen size standard with a resolution of 800 (horizontal) × 600 (vertical) dots.
XGA	A screen size standard with a resolution of 1,024 (horizontal) × 768 (vertical) dots.
SXGA	A screen size standard with a resolution of 1,280 (horizontal) × 1,024 (vertical) dots.
UXGA	A screen size standard with a resolution of 1,600 (horizontal) × 1,200 (vertical) dots.
Ad hoc	A method of wireless LAN connection that communicates with wireless LAN clients without using an access point. It is not possible to communicate with two or more devices simultaneously.
Virtual Display	The screen for one computer is output to multiple displays. A large virtual screen can be created by using multiple displays.

Notices

Copyright Notice

All rights reserved. No part of this publication may be reproduced, stored in a retrieval system, or transmitted in any form or by any means, electronic, mechanical, photocopying, recording, or otherwise, without the prior written permission of Seiko Epson Corporation. No patent liability is assumed with respect to the use of the information contained herein. Neither is any liability assumed for damages resulting from the use of the information contained herein.

Neither Seiko Epson Corporation nor its affiliates shall be liable to the purchaser of this product or third parties for damages, losses, costs, or expenses incurred by the purchaser or third parties as a result of: accident, misuse, or abuse of this product or unauthorized modifications, repairs, or alterations to this product, or (excluding the U.S.) failure to strictly comply with Seiko Epson Corporation's operating and maintenance instructions.

Seiko Epson Corporation shall not be liable against any damages or problems arising from the use of any options or any consumable products other than those designated as Original Epson Products or Epson Approved Products by Seiko Epson Corporation.

This information is subject to change without notice.

Illustrations in this guide may differ from the actual projector.

About Notations

Microsoft® Windows® 2000 operating system
Microsoft® Windows® XP Professional operating system
Microsoft® Windows® XP Home Edition operating system
Microsoft® Windows Vista® operating system
Microsoft® Windows® 7 operating system

In this guide, the operating systems above are referred to as "Windows 2000," "Windows XP," "Windows Vista," and "Windows 7". Furthermore, the collective term Windows may be used to refer to Windows 2000, Windows XP, Windows Vista, and Windows 7, and multiple versions of Windows may be referred to as, for example, Windows 2000/XP/Vista, with the Windows notation omitted.

Mac OS X 10.3.x
Mac OS X 10.4.x
Mac OS X 10.5.x
Mac OS X 10.6.x

In this guide, the operating systems above are referred to as "Mac OS X 10.3.9," "Mac OS X 10.4.x," "Mac OS X 10.5.x," and "Mac OS X 10.6.x". Furthermore, the collective term "Mac OS" is used to refer to them.

Trademarks

IBM, DOS/V, and XGA are trademarks or registered trademarks of International Business Machines Corporation.

Macintosh, Mac, Mac OS, and iMac are trademarks of Apple Inc.

Microsoft, Windows, Windows NT, Windows Vista, PowerPoint, and Windows logo are trademarks or registered trademarks of Microsoft Corporation in the United States and/or other countries.

Other product names used herein are also for identification purposes only and may be trademarks of their respective owners. Epson disclaims any and all rights in those marks.

Software Copyright:

This product uses free software as well as software to which this company holds the rights.

© 2010 Epson America, Inc.

10/10

CPD-28251