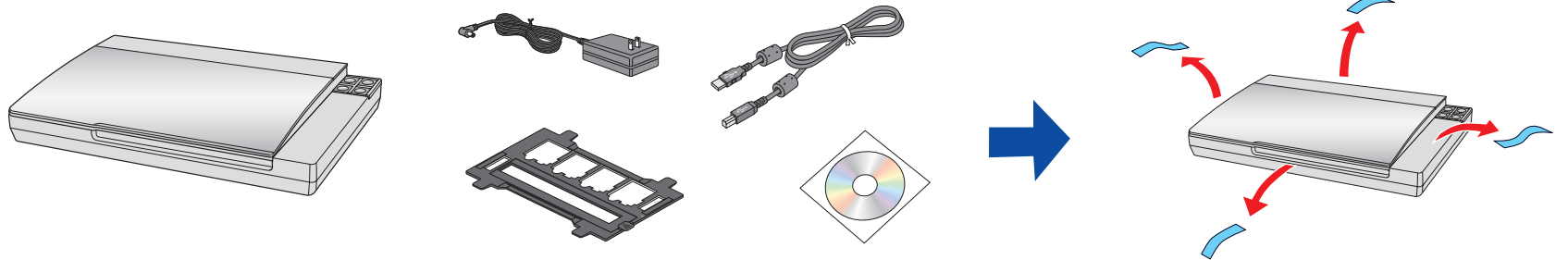


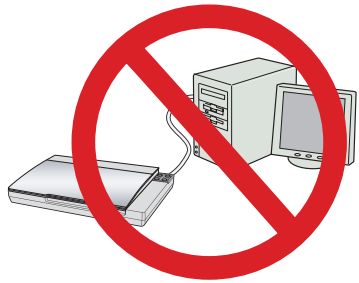


1 Unpack

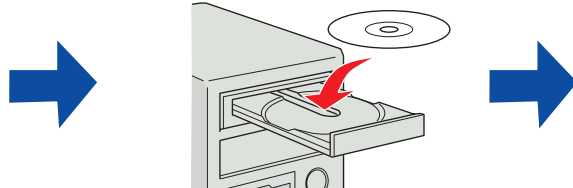
Unpack and remove protective tape.



2 Install software

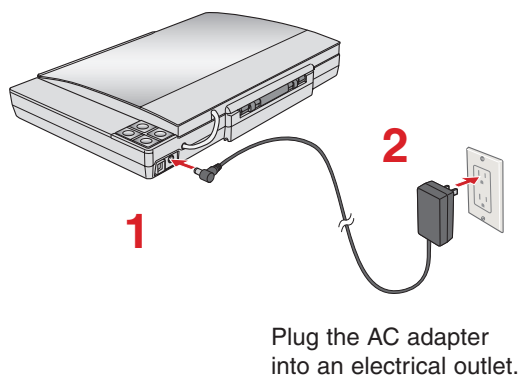


Do not connect the USB cable yet.

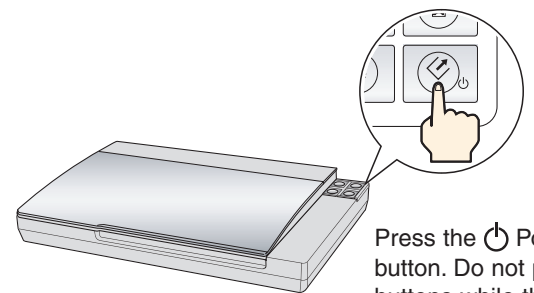
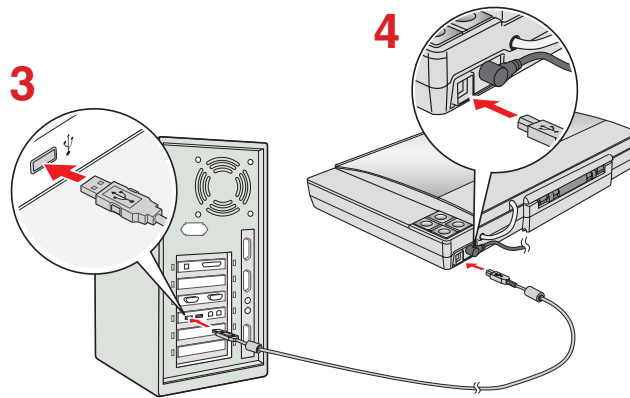


Click **Install** and follow the on-screen instructions.
Windows Vista™: Click **Run** **Epsetup.exe** when prompted.

3 Connect and turn on



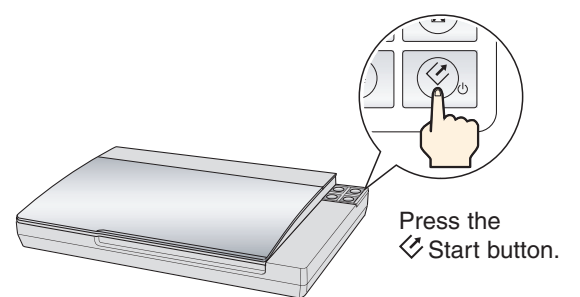
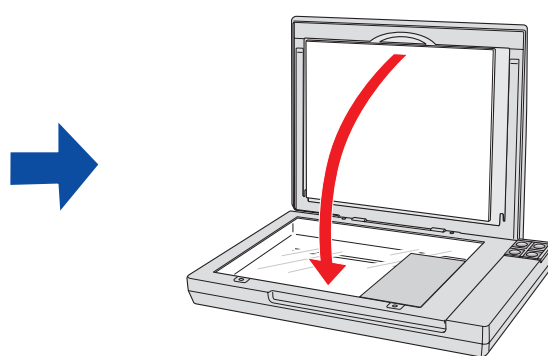
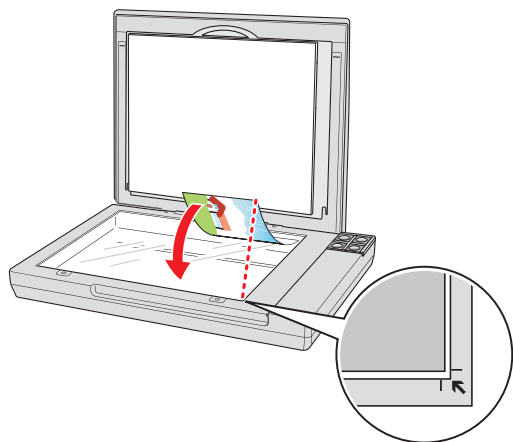
Plug the AC adapter into an electrical outlet.



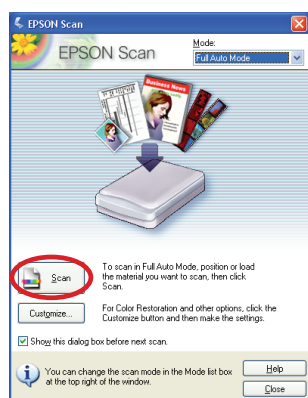
Press the **Power** button. Do not press any buttons while the status light is flashing.

Note: To turn off the scanner press and hold the **Power** button for 3 seconds.

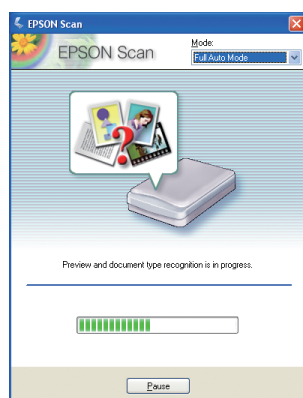
4 Scan a photo



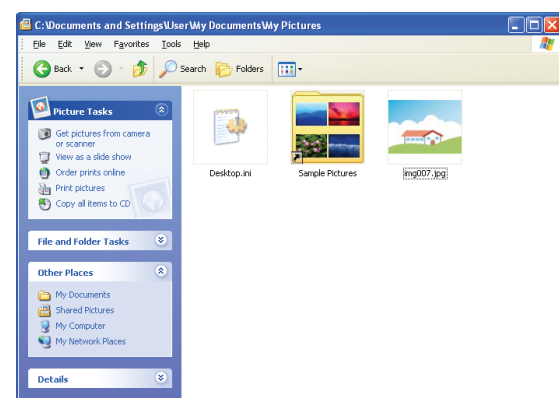
Press the **Start** button.



Click **Scan**.



Epson Scan scans your photo in **Full Auto Mode**. Wait for your scan to finish.

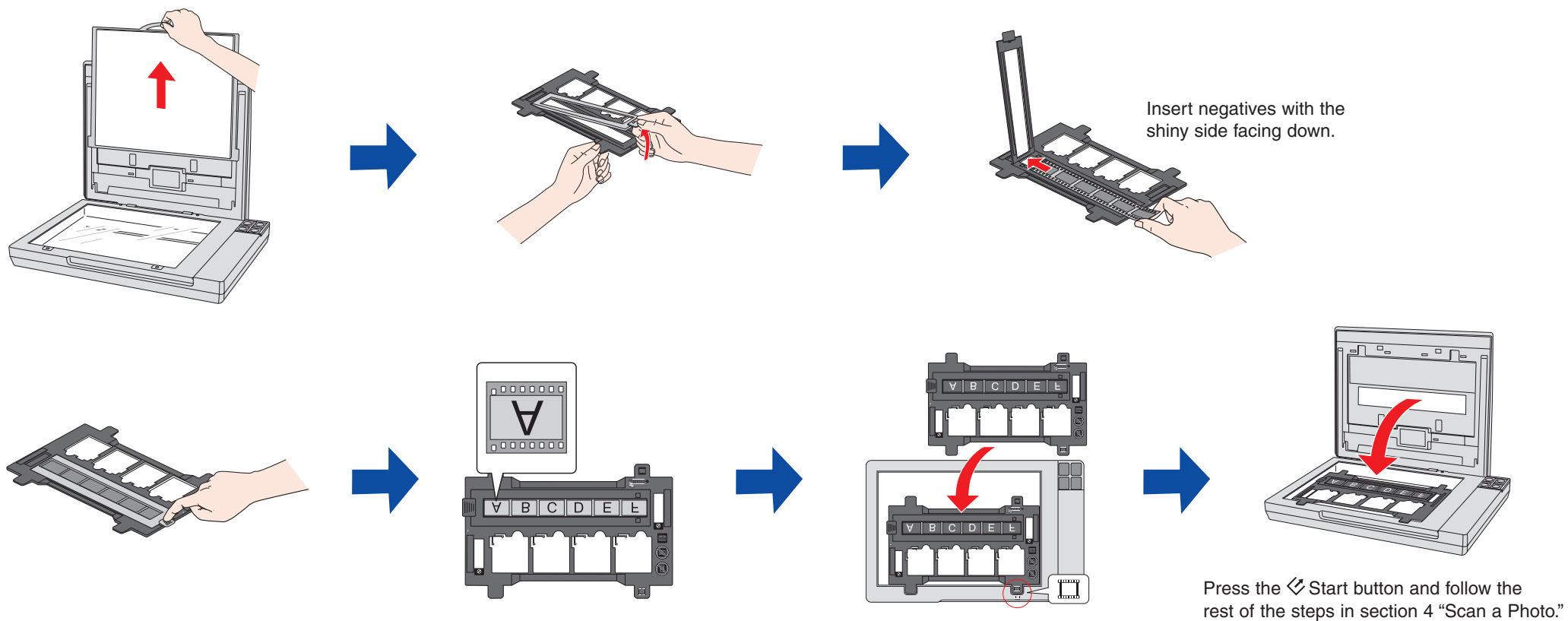


View your photo in **Pictures** or **My Pictures**.

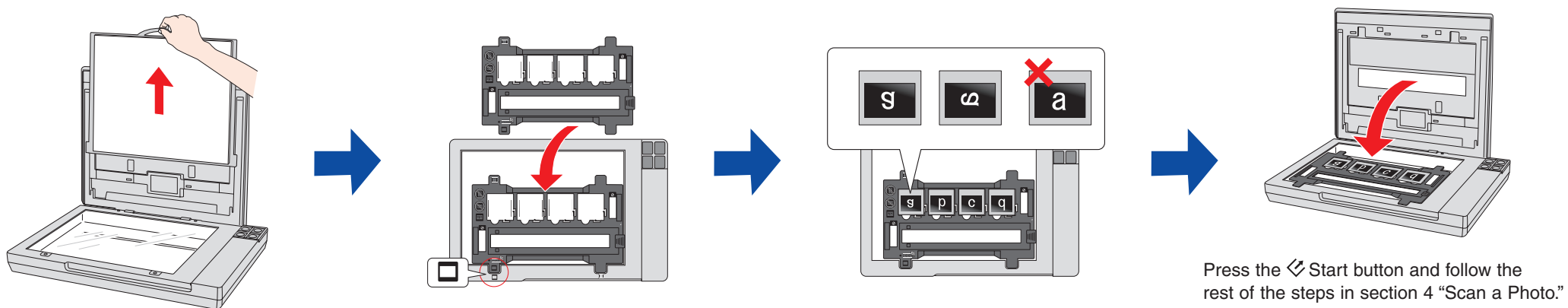


Do more

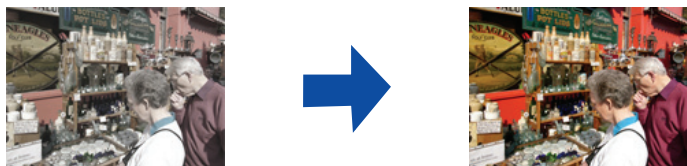
Scan film



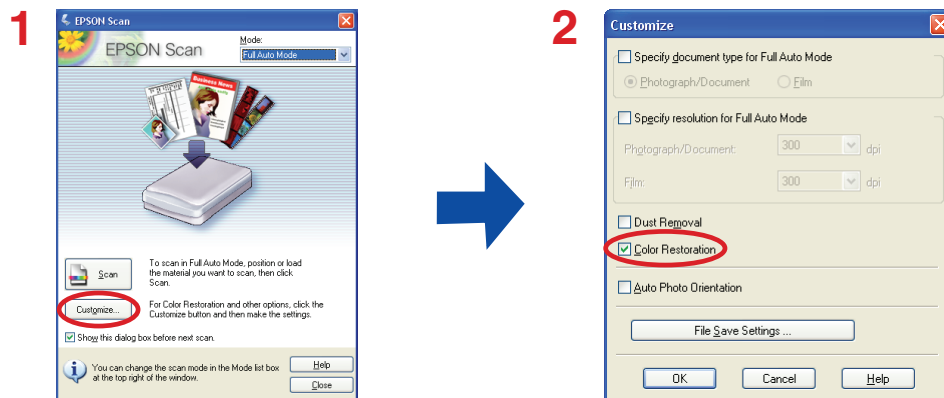
Scan slides



Restore color



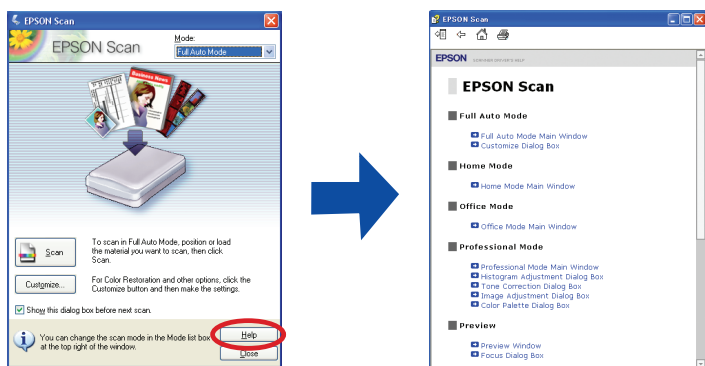
You can also optimize your scans with the Enhanced Backlight Correction and Digital Dust Removal features. See your on-screen *User's Guide* for details.



? Help

Scanner Software Help

Click the **Help** button on your scanner software screen.



User's Guide

Double-click the **Perfection V200P User's Guide** icon on your desktop.

Epson Technical Support

Internet Support

Visit Epson's support website at epson.com/support and select your product for solutions to common problems for the Perfection V200 Photo. You can download drivers and documentation, get FAQs and troubleshooting advice, or e-mail Epson with your questions.

Speak to a Support Representative

U.S.: (562) 276-4382, 6 AM to 6 PM, Pacific Time, Monday through Friday

Canada: (905) 709-3839, 6 AM to 6 PM, Monday through Friday

Toll or long distance charges may apply.

Software Technical Support

ArcSoft PhotoImpression®: Phone (510) 440-9901, Fax (510) 440-1270, www.arcsoft.com, support@arcsoft.com

ABBYY® FineReader®: (510) 226-6717, www.abbyyusa.com, support@abbyyusa.com