

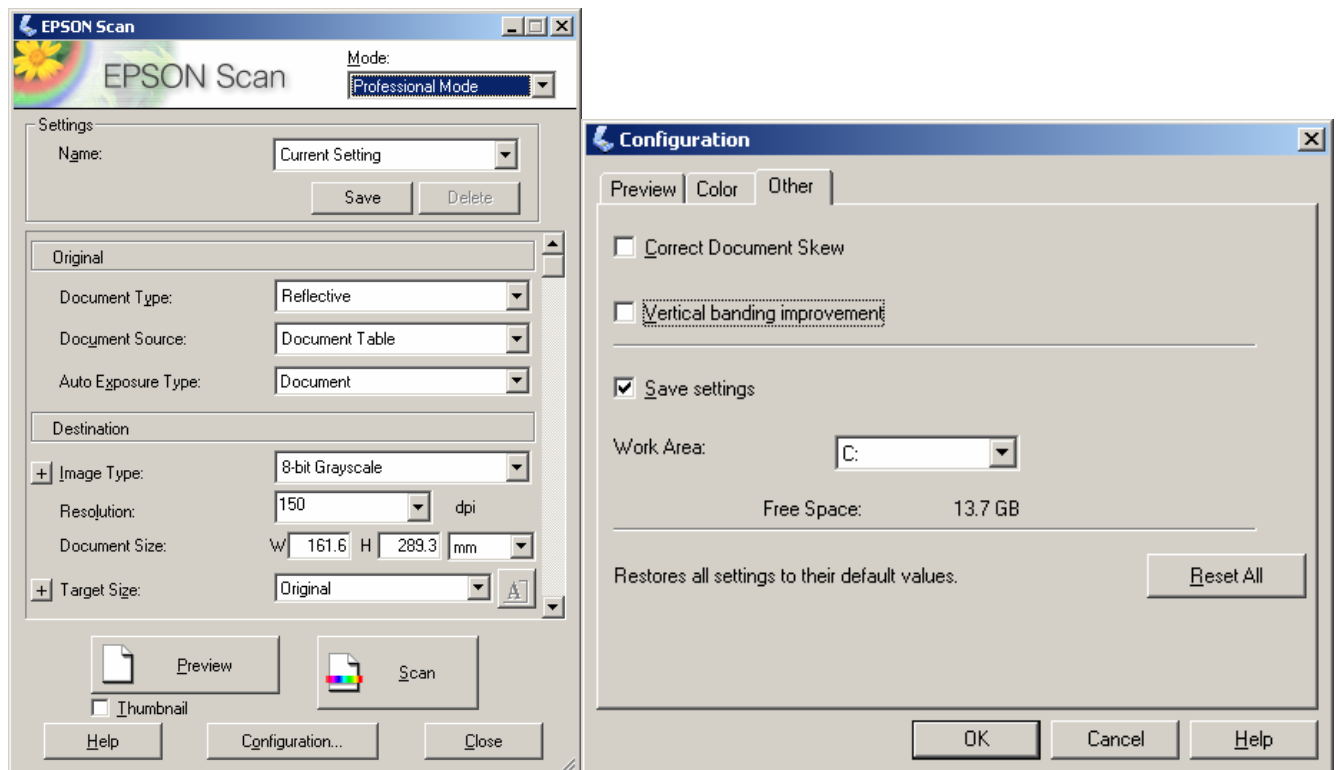
# EPSON PRODUCT SUPPORT BULLETIN

<b>Date:</b>	09/15/2008	<b>Originator:</b>	TC
<b>PSB #:</b>	PSB.2008.10.001	<b>Authorization:</b>	Kps
<b>Reference:</b>	TE08-0407 Rev. A	<b>Total Pages:</b>	2
<b>Product(s):</b>	Perfection V300 Photo		
<b>Subject:</b>	Limitations of Vertical Banding Improvement feature in Epson Scan		

This bulletin was created to inform you about the features and limitations of Vertical Banding Improvement, implemented in Epson Scan for the Perfection V300 Photo.

## Description:

Vertical Banding Improvement (VBI) is a driver setting you can use for correcting vertical banding issues that can occur when scanning certain metallic coated materials or documents. Vertical Banding Improvement can only be used on reflective media—film is not supported. When using the Vertical Banding Improvement, the maximum allowed resolution is 1200dpi. The VBI setting is located in the “Configuration” menu under the “Other” settings tab in the Epson Scan User Interface as shown below.



By default, Vertical Banding Improvement is disabled. Once the box is checked, the VBI setting will remain enabled even after the Epson Scan driver has been closed. To turn off this setting, you must uncheck the box.

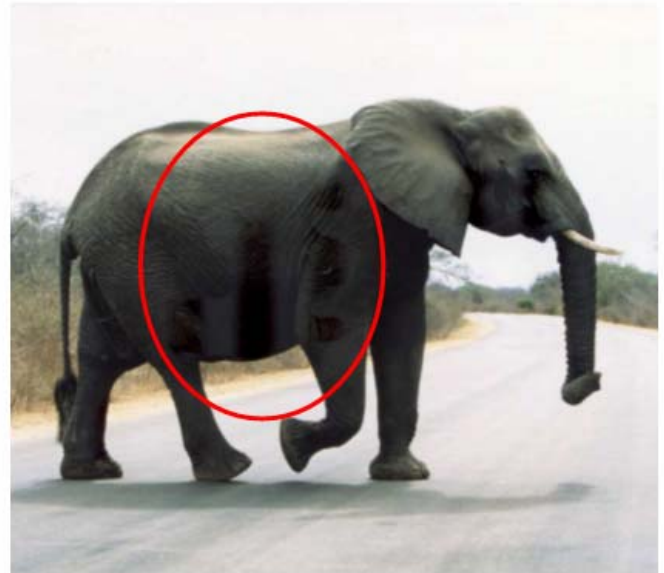
### **Limitations of VBI:**

Certain limitations apply to the Vertical Banding Improvement feature as explained below.

1.) Image artifacts may appear in the dark regions of a scanned image when applying this setting to non metallic-coated reflective media—see examples below. VBI cannot be used on non-metallic media.



**Reflective Photo with VBI: OFF**



**Reflective Photo with VBI: ON**

2.) When using Vertical Banding Improvement, extra processing time is required after the scan has been completed. The additional processing time can take a few minutes or longer depending on your computer system resources, document size and scanning resolution.

3.) When using the Scan button with VBI enabled, there is a several second delay (60 seconds or more) before scanning actually starts. The amount of time will vary depending on your computer system resources, document size and scanning resolution.

4.) The maximum scanned image pixel size that Vertical Banding Improvement can process is 83.3 megapixels (83,333,333 pixels). Therefore, make sure to note the image pixel size when scanning at higher resolutions (i.e. 1200dpi). Although VBI can support a 1200dpi scanning resolution, this feature will not work if the pixel size exceeds 83.3 megapixels. If the pixel size is too big, reduce your resolution.