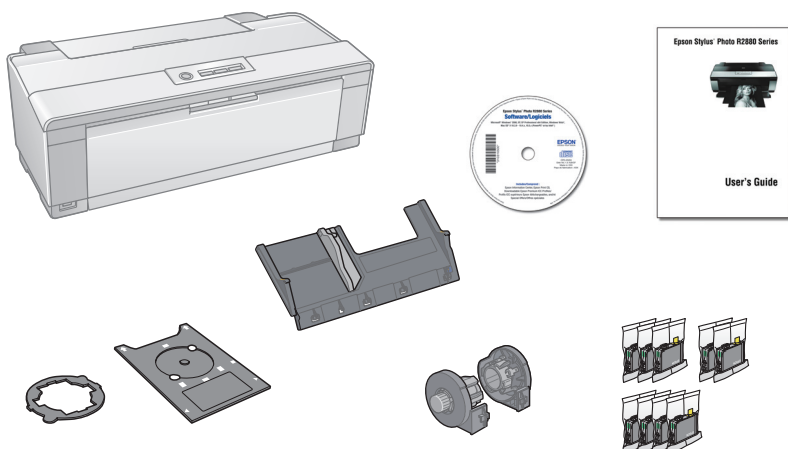


Start Here

Epson Stylus® Photo R2880

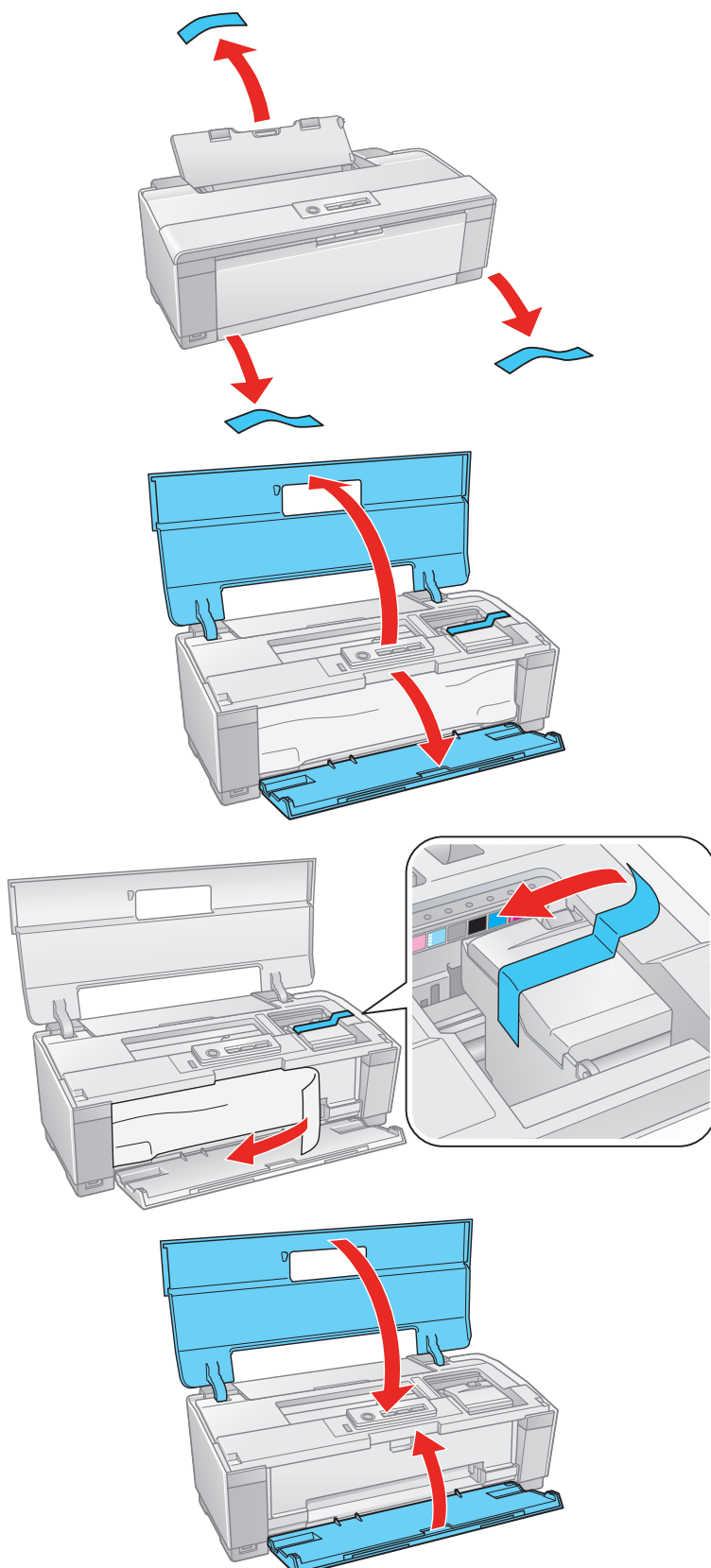
1

Unpack



Check your packaging carefully for all 9 cartridges. If anything is missing, contact Epson as described on the back.

Remove all the tape and packing material. (There may be more tape on the printer than is shown below.)



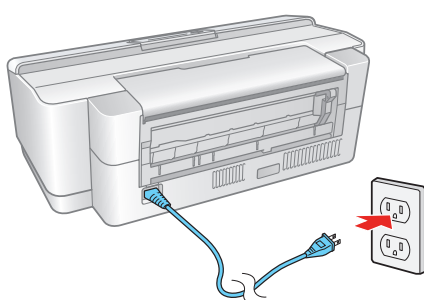
411333100

EPSON®
EXCEED YOUR VISION

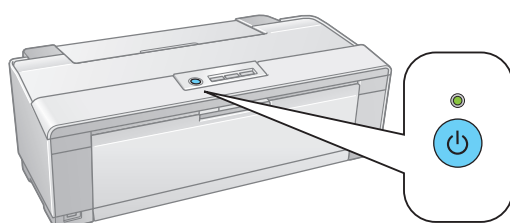
2

Turn on the power

- 1 Plug in the power cable.



- 2 Press the  power button.



3

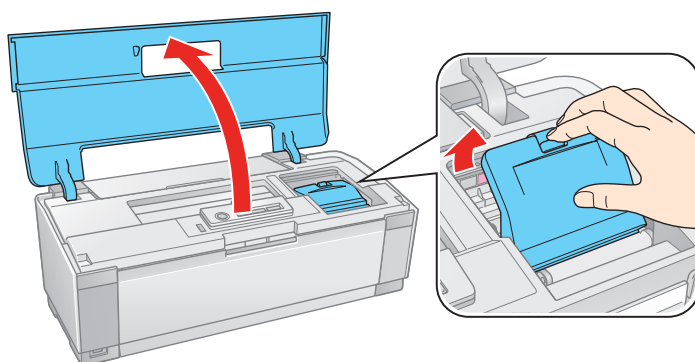
Install ink cartridges

There are eight cartridge slots in the printer, but nine cartridges are included. One slot can use either the Photo Black cartridge or Matte Black cartridge. Install the Photo Black cartridge to print on glossy and luster paper. Install the Matte Black cartridge to print on matte and fine art paper.

Caution: Do not open an ink cartridge package until you are ready to install the ink. Cartridges are vacuum packed to maintain reliability.

Don't load paper before installing ink cartridges.

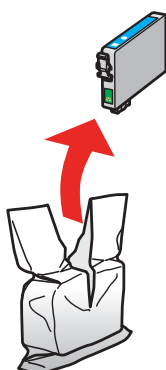
- 1 Open the printer cover, then open the cartridge cover.



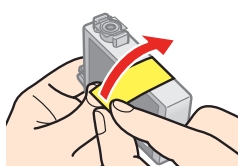
- 2 Shake the ink cartridges four or five times. (All cartridges make a clicking sound when you shake them.)



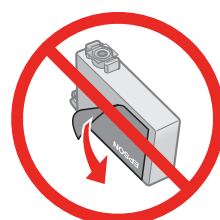
- 3 Unpack the ink cartridges.



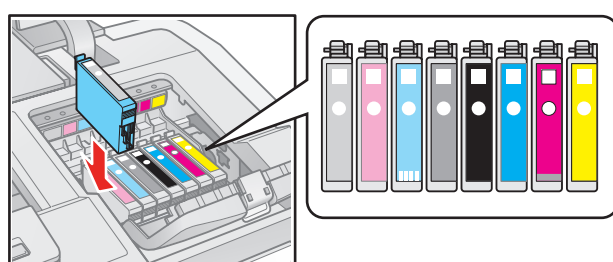
- 4** Remove only the yellow tape from each cartridge.



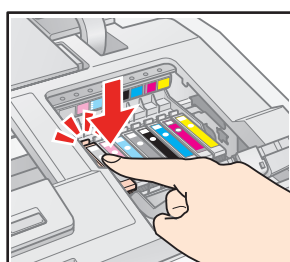
Caution: Don't remove any seals from the cartridge or ink will leak.



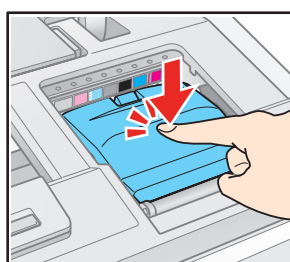
- 5** Insert the cartridges in the holder for each color.



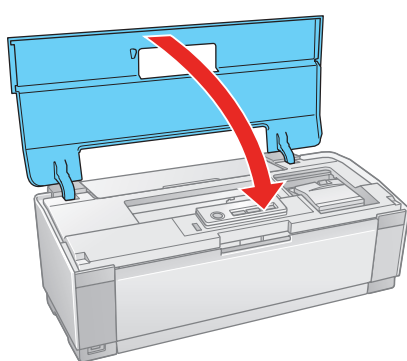
- 6** Press the cartridges down until they click.




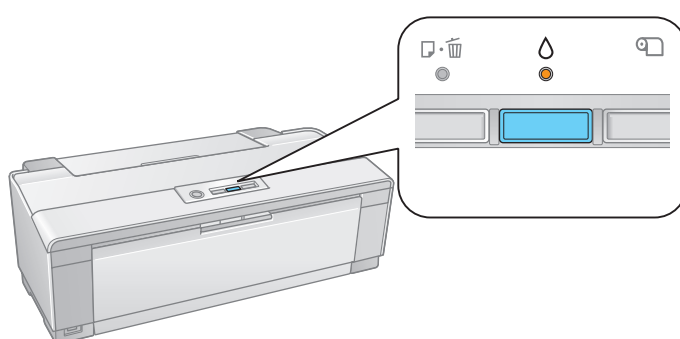
- 7** Close the cartridge cover and press it down until it clicks.



- 8** Close the printer cover.



- 9** Press the  ink button to charge the ink. Charging takes about 3 minutes.



Caution: To conserve ink, don't turn off the printer while the power light is flashing.

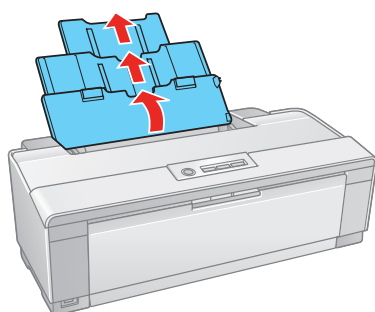
4

Load paper

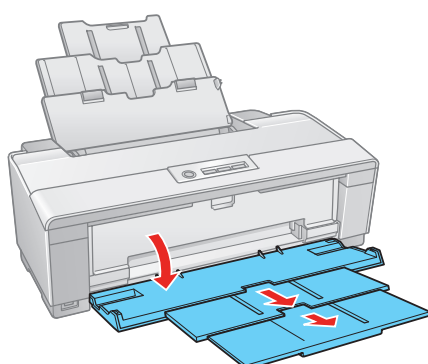
Sheet feeder

You can load plain paper, and most glossy and matte papers, in the sheet feeder.

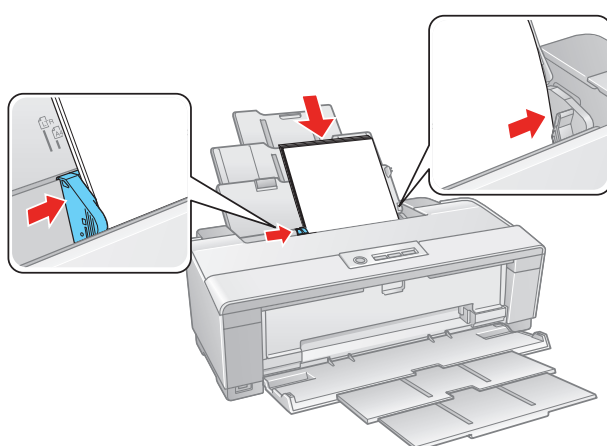
- 1 Open the paper support and pull up the extensions.



- 2 Open the output tray and pull out the extensions.



- 3 Load paper against the right edge and behind the tab. Then squeeze the edge guide and slide it to the edge of the paper.



Note: Don't load the paper sideways. Always load it short edge first.



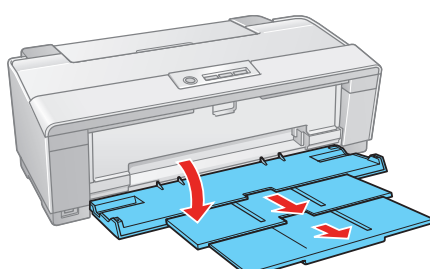
Rear Manual feed slot

You can print on these paper types using the single sheet guide and the rear manual feed slot:

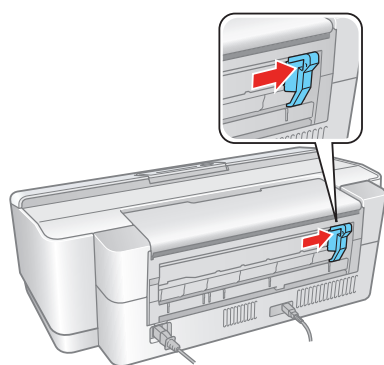
- Epson Velvet Fine Art Paper
- Epson Watercolor Paper Radiant White
- Epson UltraSmooth® Fine Art Paper 325 gsm
- PremierArt™ Matte Scrapbook Photo Paper for Epson
- Epson Exhibition Fiber Paper

- 1 Remove any paper from the sheet feeder and close the paper support.

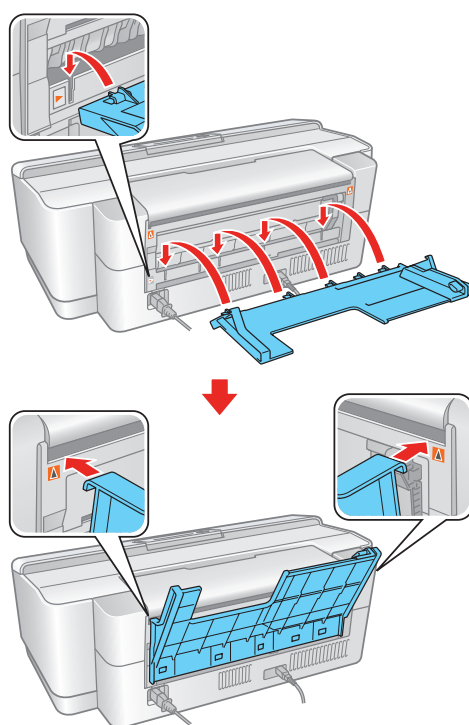
- 2 Make sure the output tray is open and the extensions are pulled out.



- 3** Slide the roll paper edge guide on the back of the printer all the way to the right.

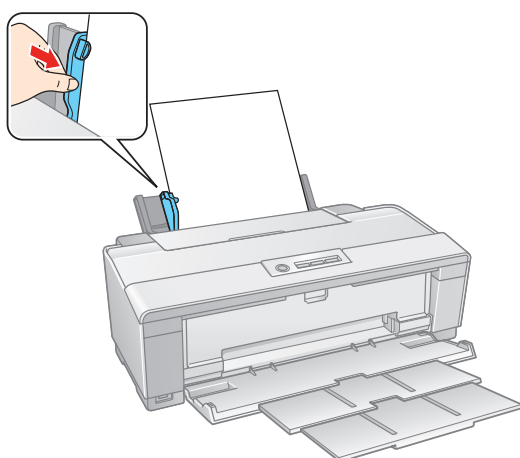


- 4** Attach the single sheet guide by aligning the notches on its base with the slots on the back of the printer. Then hook the tabs over the top of the slot (marked with orange triangles).



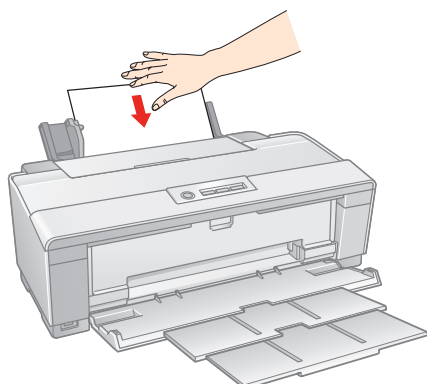
- 5** Turn on the printer so it can load the paper correctly.

- 6** Insert one sheet of paper against the right edge, then slide the edge guide over.



Note: Don't load paper sideways. Always load it short edge first.

- 7** Push the paper into the printer until it meets resistance and hold it there until the printer pulls it in slightly. When the printer begins feeding the paper, let go of it.



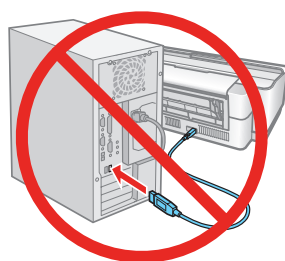
Note: For instructions on loading roll paper, a CD or DVD, or thick media, see the *User's Guide* or your on-screen *Reference Guide*.

Install software

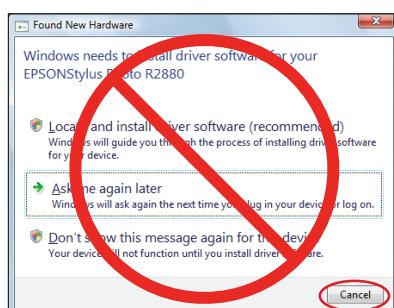
Your software works with Windows® 2000, XP, XP Professional x64 Edition, and Windows Vista®, and **Mac OS® X 10.3.9 to 10.4.x, 10.5.x.**

Windows

- 1 Make sure the printer is **NOT CONNECTED** to your computer.

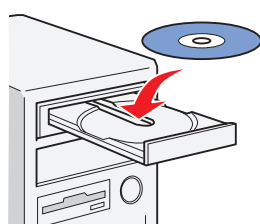


Note: If you see a Found New Hardware screen, click **Cancel** and disconnect the USB cable. You can't install your software that way.



- 2 Insert the **Software CD**.

With Windows Vista, if you see the AutoPlay window, click **Run Esetup.exe**. When you see the User Account Control screen, click **Continue**.



- 3 Click **Install** and follow the on-screen instructions.

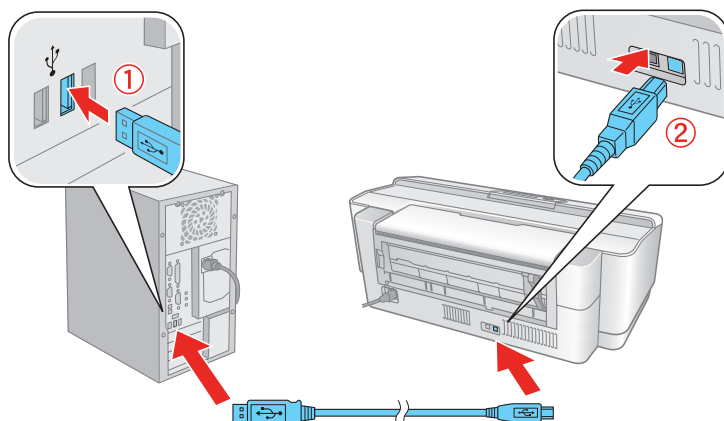


- 4 When you see this screen, click the first option and click **Next**, unless the printer is connected to your computer through an external print server.

If you're using an external print server, click the second option, click **Next**, and skip to step 6.



- 5 When prompted, connect the USB cable to any open port on your computer and then to one of your printer's USB ports.



Note: If installation doesn't continue after a moment, make sure the printer is securely connected and turned on.

- 6 Follow the on-screen instructions to install the rest of the software.
- 7 When you're done, remove the CD.
- 8 If you installed the Matte Black ink cartridge, you need to select it in the printer driver before printing. See "Select the Black Ink Cartridge" in the *User's Guide* for instructions.

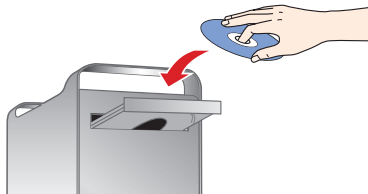
You're ready to print!

Macintosh

- 1** Make sure the printer is **NOT CONNECTED** to your computer.



- 2** Insert the **Software CD**.

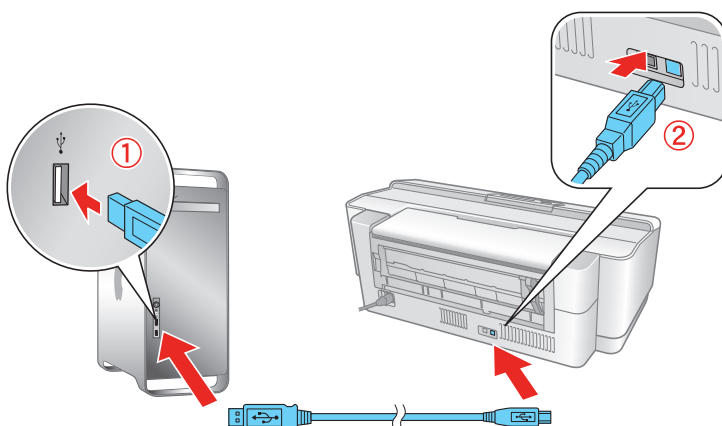


- 3** Double-click the **EPSON** **Epson** icon.

- 4** Click **Install** and follow the on-screen instructions.

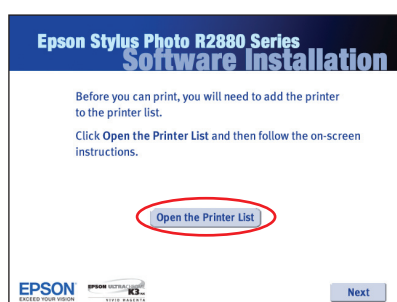


- 5** When prompted, connect the USB cable to any open USB port on your Macintosh and then to one of the printer's USB ports. Make sure the printer is securely connected and turned on.



- 6** For OS X 10.5 users: Skip to step 9.
Other users: Continue with step 7.

- 7** When you see this screen, click **Open the Printer List**.



- 8** Follow the steps on the right of the screen to add the R2880.



- 9** Click **Next** again, if necessary.

- 10** Follow the on-screen instructions to install the rest of the software.

- 11** When you're done, eject the CD.

- 12** If you installed the Matte Black ink cartridge, you need to select it in the printer driver before printing. See "Select the Black Ink Cartridge" in the *User's Guide* for instructions.

You're ready to print!

Any questions?

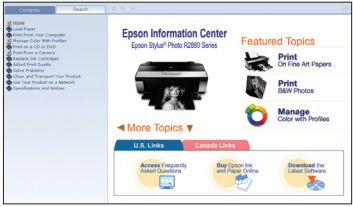
User's Guide

Instructions for loading paper, printing, maintaining your printer, and solving problems.



Epson Information Center

Click the **Epson R2880 Reference Guide** shortcut for easy access to the *Epson Stylus Photo R2880 Reference Guide*, FAQs, and software downloads. You can also purchase paper and ink.



On-screen help with your software

Select **Help** or **?** when you're using your software.

Epson Technical Support

Internet Support

Visit Epson's support website at epson.com/support and select your product for solutions to common problems. You can download drivers and documentation, get FAQs and troubleshooting advice, or e-mail Epson with your questions.

Speak to a Support Representative

Call (562) 276-7272 (U.S.) or (905) 709-2567 (Canada), 6 AM to 6 PM, Pacific Time, Monday through Friday. Days and hours of support are subject to change without notice. Toll or long distance charges may apply.

Need paper and ink?

Want great results? Simple. Use genuine Epson paper and ink. For the right supplies at the right time, you can purchase them at Epson Supplies CentralSM at www.epson.com/ink3 (U.S. sales) or www.epson.ca (Canadian sales). You can also purchase supplies from an Epson authorized reseller. To find the nearest one, call 800-GO-EPSON (800-463-7766).



Ultra Premium Photo Paper Luster

This instant drying RC photo paper produces vivid, lifelike images that rival those of traditional silver halide prints. Its semigloss "E" surface and 10 mil thickness provide a true photographic look and feel.



Ultra Premium Presentation Paper Matte

A bright white, non-glare paper with luxurious weight and feel. Ideal for true matte photographic printing.

Genuine Epson inks

Look for the number below to find your cartridges. It's as easy as remembering your number!

96 Light Light Black

96 Vivid Light Magenta

96 Light Cyan

96 Light Black

96 Yellow

96 Photo Black

96 Matte Black

96 Cyan


96 Vivid Magenta

Epson and Epson Stylus are registered trademarks, and Epson Exceed Your Vision is a logomark of Seiko Epson Corporation. UltraSmooth is a registered trademark, and Supplies Central is a service mark of Epson America, Inc. General Notice: All other trademarks are the property of their respective owners. This information is subject to change without notice.

© 2008 Epson America, Inc. 3/08

CPD-25202

Cut out the card to the right and keep it with you when purchasing replacement ink cartridges.



Epson® R2880 Ink Cartridges

96 Light Light Black	96 Photo Black
96 Vivid Light Magenta	96 Matte Black
96 Light Cyan	96 Cyan
96 Light Black	96 Vivid Light Magenta
	96 Yellow