

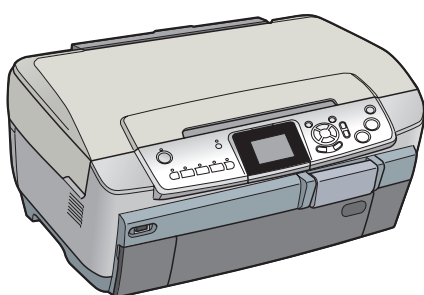
# Start Here

## Epson Stylus® Photo RX700

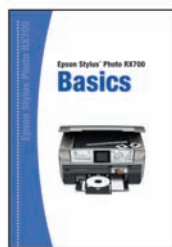
1

### Unpack and Assemble

- 1** Make sure you have all the parts shown here. If any parts are missing, contact Epson® as described on the back of this sheet.



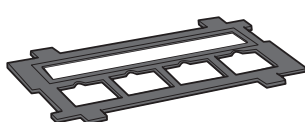
Epson Stylus Photo RX700



Basics book



Ink cartridges  
(6 total)



Film holder  
(in protective  
cardboard sleeve)



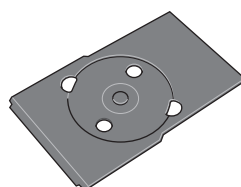
Software  
CD-ROM



8-cm CD/DVD  
adapter



Blank cardboard  
CD printing  
check disk



CD/DVD tray

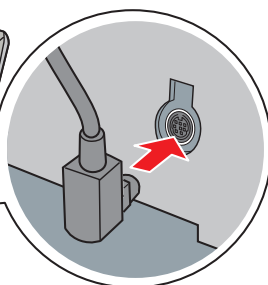
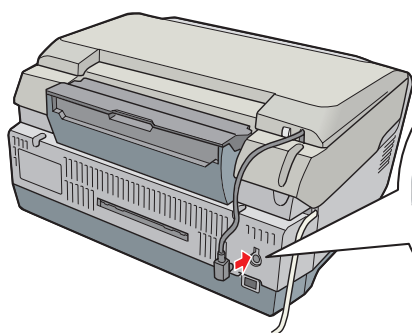
2

- Remove all the blue packing tape from the Stylus Photo RX700.

2

### Connect Cable and Unlock

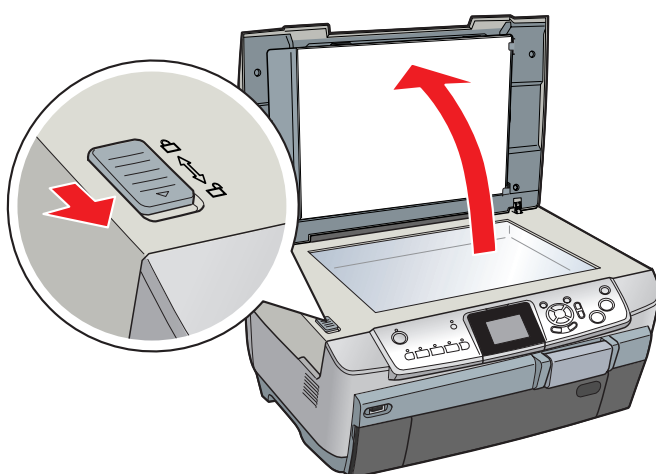
- 1** Connect the scanner lid cable.



\*410034600\*

CPD-19735  
Printed in XXXXXX XX-XX.XX XXX

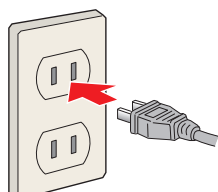
- 2** Open the scanner lid and remove the yellow UNLOCK sticker. Then unlock the scanner as shown.



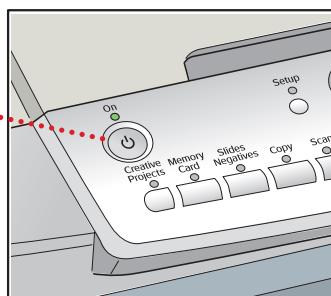
**Note:** You can store the film holder in the scanner lid behind the white document mat.

## 3 Install Ink Cartridges

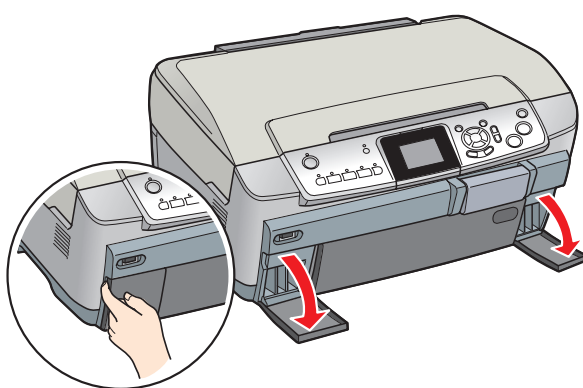
- 1** Plug your Stylus Photo RX700 into an electrical outlet, then press the On button. The green power light comes on.



On button

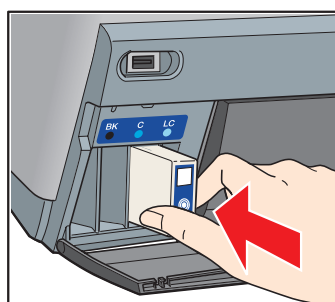


- 2** Open the ink cartridge covers.

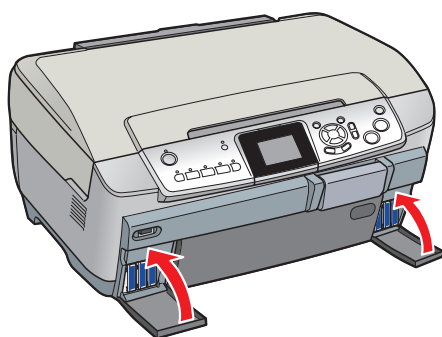


- 3** Remove the ink cartridges from their package.

- 4** Insert each ink cartridge into the correct slot for its color.



- 5** Close the ink cartridge covers to start ink charging. It takes about 3½ minutes for charging to complete.

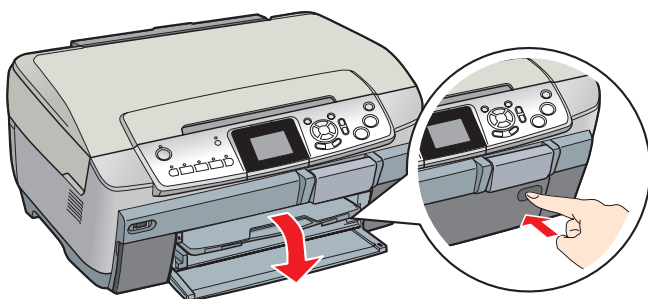


**Caution:** Do not turn off the printer, press any buttons, or try to load paper while charging is in progress.

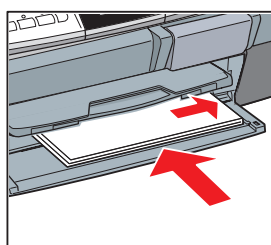
## 4 Load Paper

Your Stylus Photo RX700 is equipped with a front sheet feeder (for plain letter-size paper) and a rear sheet feeder (for both plain paper and special Epson papers). Here's how to load plain paper in the front tray.

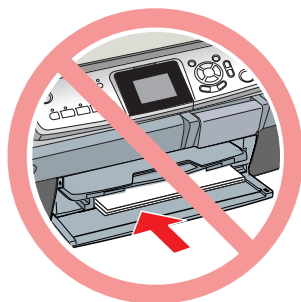
- 1** Open the front cover.



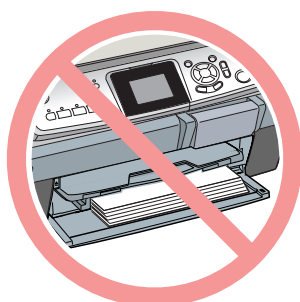
- 2** Place a stack of paper against the right side of the sheet feeder. Align it with the line on the yellow sticker, being careful not to push it in too far. You can load up to 150 sheets.



**Caution:** Do not push the paper in too far. Make sure the paper is stacked evenly. Load letter-size plain paper only.

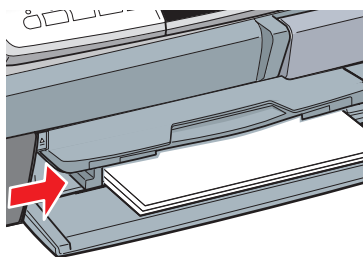


Too far in

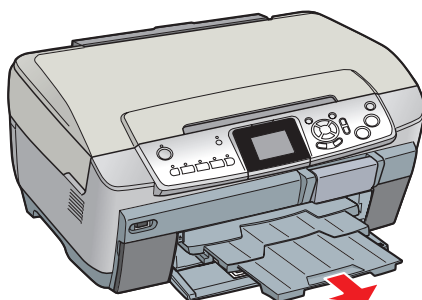


Edges not even

- 3** Slide the edge guide against the left side of the paper.



- 4** Extend the output tray.



**Note:** See your *Basics* book for instructions on loading paper in the rear sheet feeder.

## 5

# Install Software and Connect to Your Computer

The software works with Windows® 98SE, Me, 2000, and XP, and Macintosh® OS X 10.2.x to 10.3.x. Follow the steps below (for Windows), or the steps on the back of this sheet (for Macintosh).

## Windows

- 1** Make sure the RX700 is **not** connected to your computer, then turn on your computer.

**Note:** If you see several New Hardware Wizard screens, click **Cancel** for each of these screens and disconnect your RX700. You can't install your software that way.

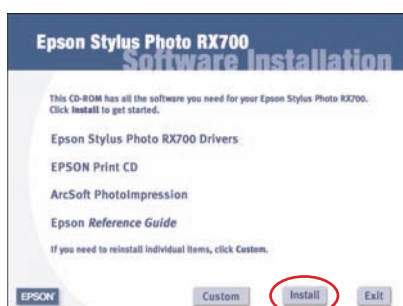


- 2** Insert your RX700 software CD-ROM in your CD-ROM or DVD drive.

**Note:** If you're using Windows XP and you see a message asking what to do with your CD, click **Cancel**.

*Turn over.....* ➡

- 3** When you see this screen, click **Install**.



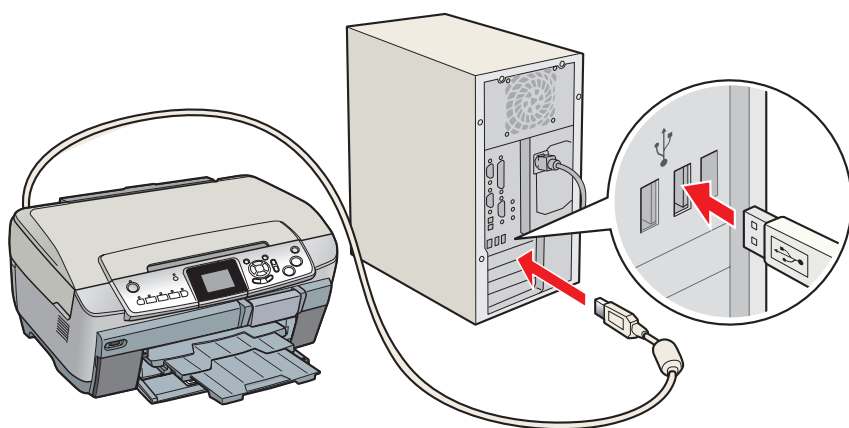
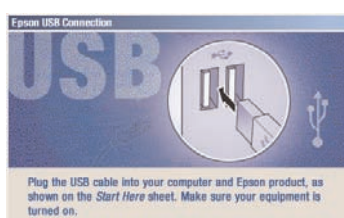
**Note:** If you don't see this screen, do the following:

**Windows XP:** Click **Start** >  **My Computer**. Then double-click the Epson CD-ROM icon.

**Windows 98/Me/2000:** Double-click  **My Computer**. Then double-click the Epson CD-ROM icon.

- 4** Read the license agreement, then click **Agree**. Several messages display on your screen.

- 5** When you see this screen, plug the flat end of the USB cable into any available USB port on your computer.



- 6** Click **Next** to continue the installation.

**Note:** It will take several minutes to install the software. Click **Next** or **Finish**, as prompted. Don't cancel the installation.

- 7** When the installation is complete, print a test page, if desired. Then click **Next** to install optional software.



- 8** Follow the instructions on the screen to install the software. When done, click **Exit**.

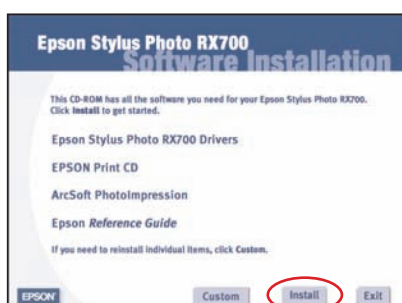
- 9** When you see the Product Registration screen, register your RX700 as instructed, then remove the CD-ROM and restart your computer.

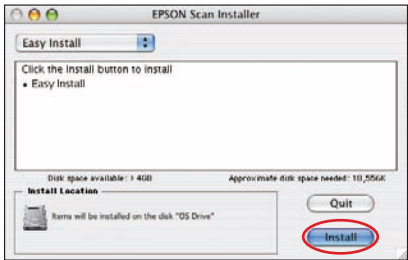
Now you're ready to copy, scan, and print. See the *Basics* book or your on-screen *Reference Guide* for instructions.

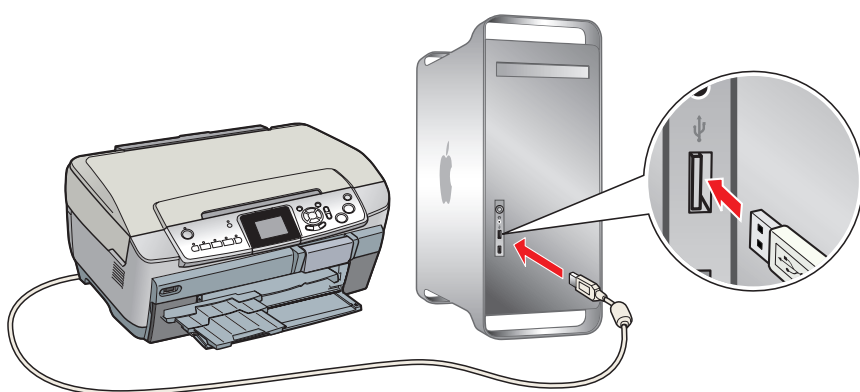
## Macintosh

- 1** Insert your RX700 software CD-ROM into your CD-ROM or DVD drive.

- 2** Double-click the  **Epson CD-ROM** icon, if necessary. Then double-click the  **Epson** installer icon. You see this screen:



- 3** Click **Install**.
  - 4** Read the license agreement, then click **Agree**.  
**Note:** Enter your administrator name and password, if necessary.
  - 5** Click **Install** at the EPSON Scan Installer screen to install the scanner portion of your software.
- 
- 6** When the software finishes installing, click **Quit**.
  - 7** Follow the on-screen instructions to install additional software.  
**Note:** Click **Quit** when each part finishes installing.
  - 8** When installation is complete, you see the Additional Software screen. Follow the instructions on the screen to install the software. When done, click **Exit**.
  - 9** Close any open screens, remove the CD-ROM, and restart your Macintosh.
  - 10** Plug the flat end of the USB cable into any available USB port on your Macintosh.

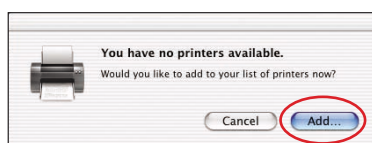


Follow the instructions below to add the RX700 to the Print Center (OS X 10.2.x) or Printer Setup Utility (OS X 10.3.x).

## Selecting the RX700

- 1** Open the OS X Applications folder, then open the **Utilities** folder and start **Print Center** or the **Printer Setup Utility**.

If you see this screen, click **Add**.

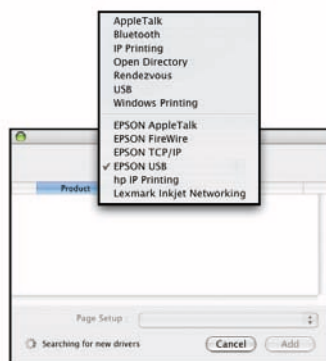


- 2** On the Printer List screen, click the **Add** button.

- 3** On the next screen, select **EPSON USB** from the pull-down menu.

- 4** Click **Stylus Photo RX700**.

**Note:** If the RX700 doesn't appear, make sure it is turned on and securely connected to your Macintosh.



- 5** Click the **Add** button. You see the Stylus Photo RX700 in the Printer List.

- 6** Quit Print Center or the Printer Setup Utility. Now you're ready to copy, scan, and print. See the *Basics* book or your on-screen *Reference Guide* for instructions.



# Any Problems?

If you are having a problem with your RX700, check the message on the control panel. Try turning the RX700 off and then back on to clear the error. If your problem is listed here, try these suggestions. For more information, see your *Basics* book, software Help, or on-screen *Reference Guide*.

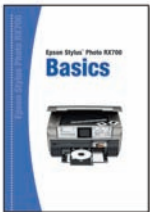
<b>The Found New Hardware Wizard appears on your screen.</b>	Click <b>Cancel</b> and disconnect the RX700. Install the software as described on this sheet.
<b>You see an error message when you try to print or scan.</b>	Make sure your RX700 is connected to your computer, plugged into a power source, and turned on.
<b>The RX700 doesn't work.</b>	<p>Make sure you have unlocked the scanner, as described in section 2. Turn the RX700 off and then on again.</p> <p>Make sure the ink cartridges are pushed all the way in and the covers are closed.</p> <p>Make sure your RX700 software is installed correctly.</p>
<b>The Stylus Photo RX700 makes noise after you turn it on.</b>	<p>Make sure the scanner lock is in the unlocked position, as shown on the front of this sheet. After releasing it, turn off the RX700, wait a moment, then turn it back on.</p> <p>It is normal for the RX700 to make whirring sounds after you turn it on.</p>

# Any Questions?

Here's where to look for answers:

## Epson Stylus Photo RX700 Basics

Includes instructions on copying, printing, and scanning without a computer.



## On-screen Reference Guide

Explains how to use your RX700 with a computer. Double-click the **Reference Guide** icon on your desktop to view the guide.



## On-screen help for ArcSoft PhotolImpression™, EPSON Scan, and EPSON Print CD

Click the **Help** button or question mark that appears on the screen when you're using any of these programs.

## Epson Technical Support (Stylus Photo RX700, EPSON Scan, and EPSON Print CD)

- **World Wide Web**  
<http://support.epson.com>
- **Automated Telephone Services**  
To use these services, you must have a touch tone telephone and call (800) 922-8911. Your Epson SoundAdvice<sup>SM</sup> Express Code is **70635**. Use this code to quickly select your product in SoundAdvice.
- **To speak to a Technical Support Representative**  
Dial (562) 276-4382 (U.S.) or (905) 709-3839 (Canada), 6 AM to 6 PM, Pacific Time, Monday through Friday. Toll or long distance charges may apply.

## Software Technical Support

Software	Telephone and Fax	Internet and E-mail
ArcSoft PhotolImpression	(510) 440-9901 8:30 AM to 5:30 PM, Pacific Time, Monday–Friday Fax: (510) 440-1270	<a href="http://www.arcsoft.com/en/support">www.arcsoft.com/en/support</a> <a href="mailto:support@arcsoft.com">support@arcsoft.com</a>

# Need Ink and Paper?

For the best prints and copies, use genuine Epson ink and paper. You can purchase them from an authorized Epson reseller. To find the nearest reseller, please call 800-GO-EPSON (800-463-7766). To purchase online, visit [www.epsonstore.com](http://www.epsonstore.com) (U.S. sales only). In Canada, please call (800) 463-7766 for reseller referral.



**T559120**  
Black Ink  
Cartridge



**T559220**  
Cyan Ink  
Cartridge



**T559320**  
Magenta Ink  
Cartridge



**T559420**  
Yellow Ink  
Cartridge



**T559520**  
Light Cyan  
Ink Cartridge



**T559620**  
Light Magenta  
Ink Cartridge



## Premium Glossy Photo Paper

Heavyweight paper with a high gloss finish that lets you create borderless photos with no perforated edges. Available in 4 x 6, 5 x 7, 8 x 10, and Letter sizes.



## Matte Paper Heavyweight

Perfect for high-quality photo reprints and enlargements.



## PremierArt™ Matte Scrapbook Photo Paper for Epson

Ideal for printing beautiful-quality matte photos and scrapbook-safe elements.



## Semigloss Scrapbook Photo Paper

Perfect for printing satin-finish photos that stand out against the traditional matte background of your scrapbook pages.