

# EPSON PRODUCT SUPPORT BULLETIN

---

<b>Date:</b>	11/8/04	<b>Originator:</b>	RB, CH, JD, SA
<b>PSB #:</b>	PSB.2004.03.001C	<b>Authorization:</b>	<i>JS</i>
<b>Reference:</b>	PSB.2004.03.001A	<b>Total Pages:</b>	19
<b>Product(s):</b>	EPSON Stylus Color 3000, Stylus Pro 4000, 5000, 5500, 7000 Series, 7600 Series, 9000 Series, 9600 Series, 10000 Series, and 10600 Series		
<b>Subject:</b>	Maximum Printable Area Limits for the EPSON Professional Graphic Printer line.		

---

This bulletin was created to inform you of the maximum custom page sizes allowable for EPSON Professional Graphic products. The tables below show the maximum page sizes allowable for the EPSON Professional Graphics printer line (Desktop and Large Format). Although this document is meant as a guideline for the maximum page size allowable for each printer, it does not include printable area (margin) information. Please refer to your user guide for additional information regarding the printable area (margins) for your particular printer. There are 3 aspects that effect how long of a page your printer can output. Those 3 items are:

1. Operating System.
2. Driver Specification.
3. Software application(s) being used.

## **Maximum custom page size allowable per operating system (for Epson standard driver):**

	Stylus Color 3000	Stylus Pro 4000	Stylus Pro 5000	Stylus Pro 5500	Stylus Pro 7000	Stylus Pro 7500	Stylus Pro 7600	Stylus Pro 9000	Stylus Pro 9500	Stylus Pro 9600	Stylus Pro 10000 Series
Macintosh OS	44 in.	44 in.	44 in.	44 in.	90.5 in.	90.5 in.	90.5 in.	90.5 in.	90.5 in.	90.5 in.	90.5 in.
Macintosh OS X*	44 in.	44 in.	N/A	44 in.	N/A	N/A	90.5 in.	N/A	N/A	90.5 in.	90.5 in.
Win 9x/Me	44 in.	44 in.	44 in.	44 in.	90.5 in.	90.5 in.	90.5 in.	90.5 in.	90.5 in.	90.5 in.	90.5 in.
Win NT 4.0/2000/XP	44 in.	44 in.	44 in.	44 in.	90.5 in.	90.5 in.	90.5 in.	90.5 in.	90.5 in.	90.5 in.	90.5 in.

Print jobs being sent through the Epson standard print driver should be in the RGB format in order for color management to be utilized properly.

\* Macintosh OS X allows you to create any paper size regardless of printer driver's limitations. Exceeding these limitations will result in your image being cropped and printed at 8.5 x 11.

## **Maximum custom page size allowable for EPSON PostScript options (PPD):**

	Stylus Color 3000	Stylus Pro 4000	Stylus Pro 5000	Stylus Pro 5500	Stylus Pro 7000	Stylus Pro 7500	Stylus Pro 7600	Stylus Pro 9000	Stylus Pro 9500	Stylus Pro 9600	Stylus Pro 10000 Series
EPSON Stylus RIP	44 in.	N/A	44 in.	N/A	N/A	N/A	N/A	N/A	N/A	N/A	N/A
EPSON Fiery RIP Station	N/A	N/A	44 in.	N/A	See NOTE 1	See NOTE 1	N/A	See NOTE 1	See NOTE 1	N/A	N/A
EPSON Fiery Spark Designer (Mac)	N/A	N/A	N/A	44 in.	N/A	N/A	N/A	N/A	N/A	N/A	N/A
EPSON Fiery Spark Professional	N/A	N/A	N/A	44 in.	N/A	N/A	See NOTE1	N/A	N/A	See NOTE1	See NOTE 1
EPSON ColorBurst RIP	N/A	See NOTE1	N/A	44 in.	N/A	N/A	See NOTE1	N/A	N/A	See NOTE1	See NOTE 1

Print jobs being sent through the Epson PostScript driver can be either RGB or CMYK format. Settings in the RIP will determine how color management is used.

## **Maximum page size allowable from software applications:**

	Stylus Color 3000	Stylus Pro 4000	Stylus Pro 5000	Stylus Pro 5500	Stylus Pro 7000	Stylus Pro 7500	Stylus Pro 7600	Stylus Pro 9000	Stylus Pro 9500	Stylus Pro 9600	Stylus Pro 10000 Series
Adobe Photoshop 5.x/6.x/7.x/	See NOTE 2	See NOTE 2	See NOTE 2	See NOTE 2	See NOTE 2	See NOTE 2	See NOTE 2	See NOTE 2	See NOTE 2	See NOTE 2	See NOTE 2
Adobe Photoshop CS	See NOTE 2	See NOTE 2	See NOTE 2	See NOTE 2	See NOTE 2	See NOTE 2	See NOTE 2	See NOTE 2	See NOTE 2	See NOTE 2	See NOTE 2
*Adobe Illustrator 8.x/9.x	227 in.	227 in.	227 in.	227 in.	227 in.	227 in.	227 in.	227 in.	227 in.	227 in.	227 in.
*Adobe Illustrator CS	227 in.	227 in.	227 in.	227 in.	227 in.	227 in.	227 in.	227 in.	227 in.	227 in.	227 in.
QuarkXPress 4.x/5.x/6	48 in.	48 in.	48 in.	48 in.	48 in.	48 in.	48 in.	48 in.	48 in.	48 in.	48 in.
*CorelDRAW 8.x/9.x/10.x/11.x	1,800 in.	1,800 in.	1,800 in.	1,800 in.	1,800 in.	1,800 in.	1,800 in.	1,800 in.	1,800 in.	1,800 in.	1,800 in.

\* These applications allow for tiling of print pages, therefore allowing you to print beyond the printers maximum page length limit and print to the applications limits. The printer driver must be set for Roll Paper (Banner) mode so that page breaks at the printer's maximum page length do not occur (in essence gives you a 0 margin for the bottom of the page). The Stylus Pro 5000/5500 however will give a slight page break at the 44 inch limit as these printers do not support banner mode. Also, printing certain elements from these applications may not utilize color management correctly/properly and may produce output color that is not expected.

### **NOTE 1:**

- a. Under Win 9x/Me, the PPD limit is 129 inches.
- b. Under Windows NT, 2000 and XP, the PPD limit is 1771.6 inches (SP7000/9000 Series) and 1800 inches (SP7600/9600/10000 Series).
- c. Under Mac OSX/8.x/9.x, the PPD limit is 273.06 inches.

### **NOTE 2:**

Adobe Photoshop has a pixel limitation of 30,000 pixels, which means that a document created @ 300ppi can only reach a maximum page size of 100 inches (H and V). When sending jobs to the printer via the standard non-PostScript print driver, Photoshop looks at the input resolution of the printer driver and adjusts the page size accordingly. All Epson large format printers use 360dpi as the input resolution (this is the resolution data is rasterized at), therefore when printing from Photoshop, the maximum page length you will be able to output to any Epson large format printer using the standard Epson print driver would be 83.33 inches (30,000 pixels / 360dpi). As for the Epson desktop products, they rasterize data at 720dpi, therefore the maximum page length obtainable with the standard print driver would be 41.67 inches (30,000 pixels / 720dpi).

Also, under Photoshop 5.x/6.x for the Macintosh and Photoshop 6.x for the PC, the job will end up clipped if it is over the 83.3inch printer page limit. In Photoshop CS, the print job will end up clipped if it is over the 86inch printer page limit; however it will allow you to create a custom paper size of 91inches max. If you are using Photoshop 5.x for the PC, the print job will actually be truncated to fit within the printable area of the printer. Be advised that you may not get a page size error. It may be useful to enable the "print preview" function of your printer driver (if available) so that you do not waste unnecessary media.

The only options for printing beyond the limitations is to save the file and print via an application that does not have the 30,000 pixel limit (may lose color management functions) or print the file through a PostScript RIP (which will allow for longer pages).

**UPDATE:** Photoshop CS allows for a maximum Pixel limit of 300,000 x 300,000 (this would create a 251.5 GB file!!) This allows Photoshop to have a print dimension of 4166.666 x 4166.666 at 72 ppi (Pixels per Inch). At 360 ppi, your max print size would be 833.333 x 833.333. You can still only print 44 x 90.5" Photoshop CS at this point exceeds the capability of our printers.

For Windows Users, if you encounter partial/incomplete prints while having Finest Detail enabled, please disable this setting. It is recommended for low resolution text and line art to sharpen their edges. For photos, this may create a massive print file that is too large for the printer driver to process correctly.

The following examples show how to setup banner printing from Adobe Illustrator 8.x/9.x and CorelDRAW 9 from the PC platform. The Macintosh versions of these applications should be very similar in function. Please refer to your software documentation for additional assistance.

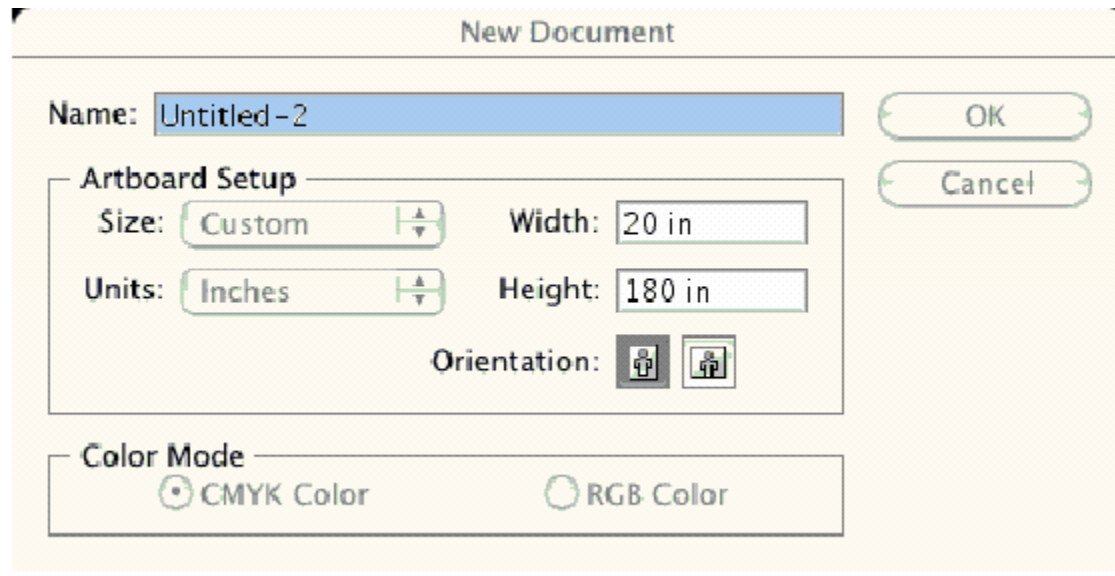
### **Adobe Illustrator CS:**

In this example, we are creating a banner, which is 227 inches (Illustrators max. page setup).

#### **NOTE:**

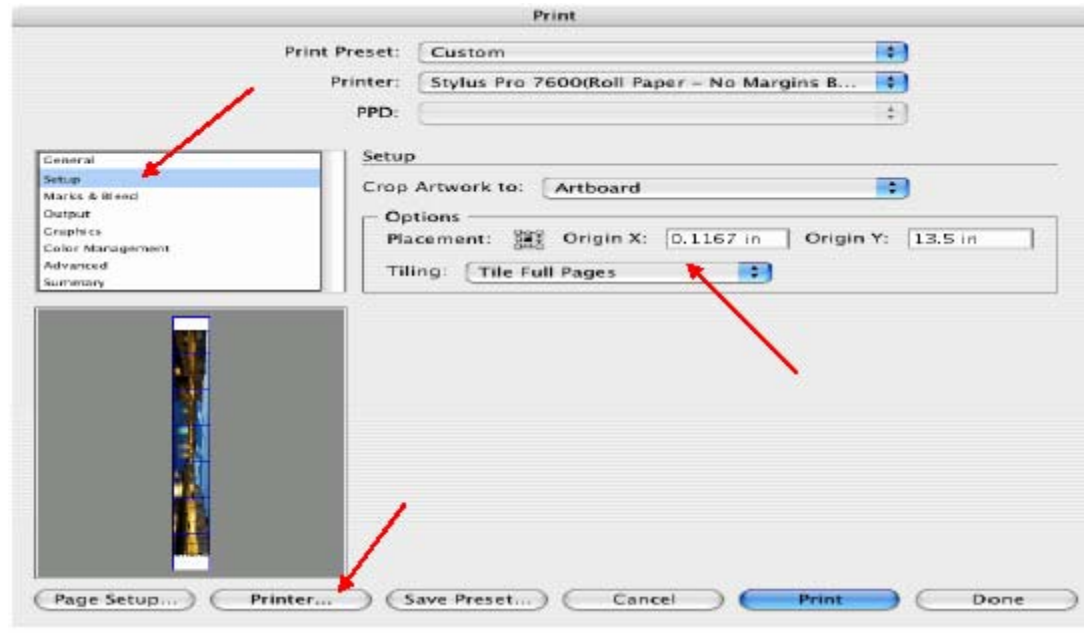
Mac O/S 10.3.3 system is used in this example. Windows versions of this application should be very similar in functionality. Please refer to your software documentation for additional assistance. In this example, a “20 inches wide X 180 inches high” document is created.

1. Click on File and New, set up the width and height (sample shows 20 W x 180 H), then click OK.



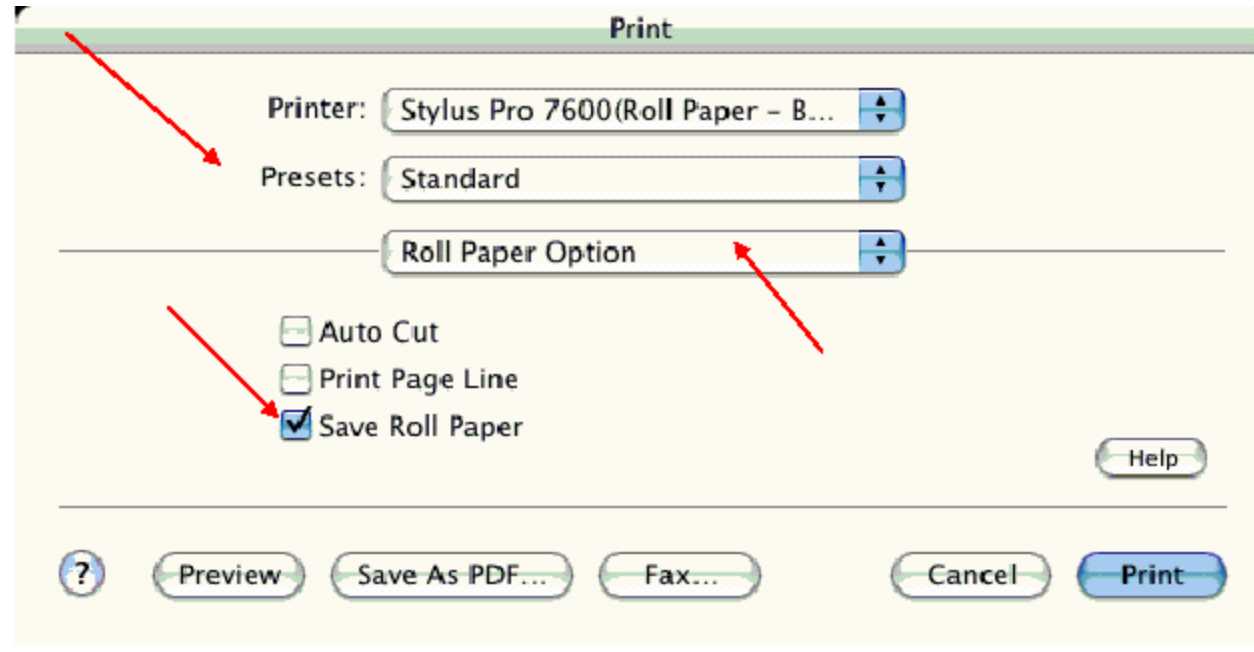
2. Insert the image you want to print and stretch it until it covers the whole page.

3. Click on File, Print, click Setup, under Tiling click on the drop down arrow, select **Tile Full**
4. **Pages** and click the **Printer** button.

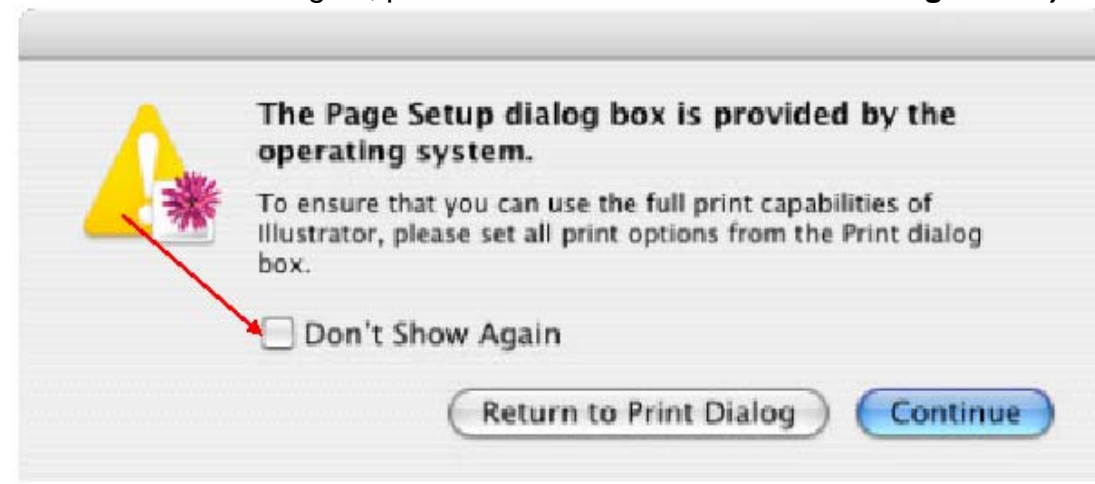


5. When the printer setup window comes up, select your printer name and set the **Roll Paper Options** to:  
**Roll Paper Banner**  
**Roll Paper Banner – No Margin** ( if printing no margins)
6. In the **Copies and Pages** section, click on the drop down arrow, select **Roll Paper Option**. Uncheck **Auto Cut** then check **Save Roll Paper**.

7. Then click on **Print**. This will bring you back to the **Print** window.



8. This time click on **Page Setup**, you see the following screen, just click on **Continue** (If you don't want to see the window again, place a check mark on **Don't Show Again** box).

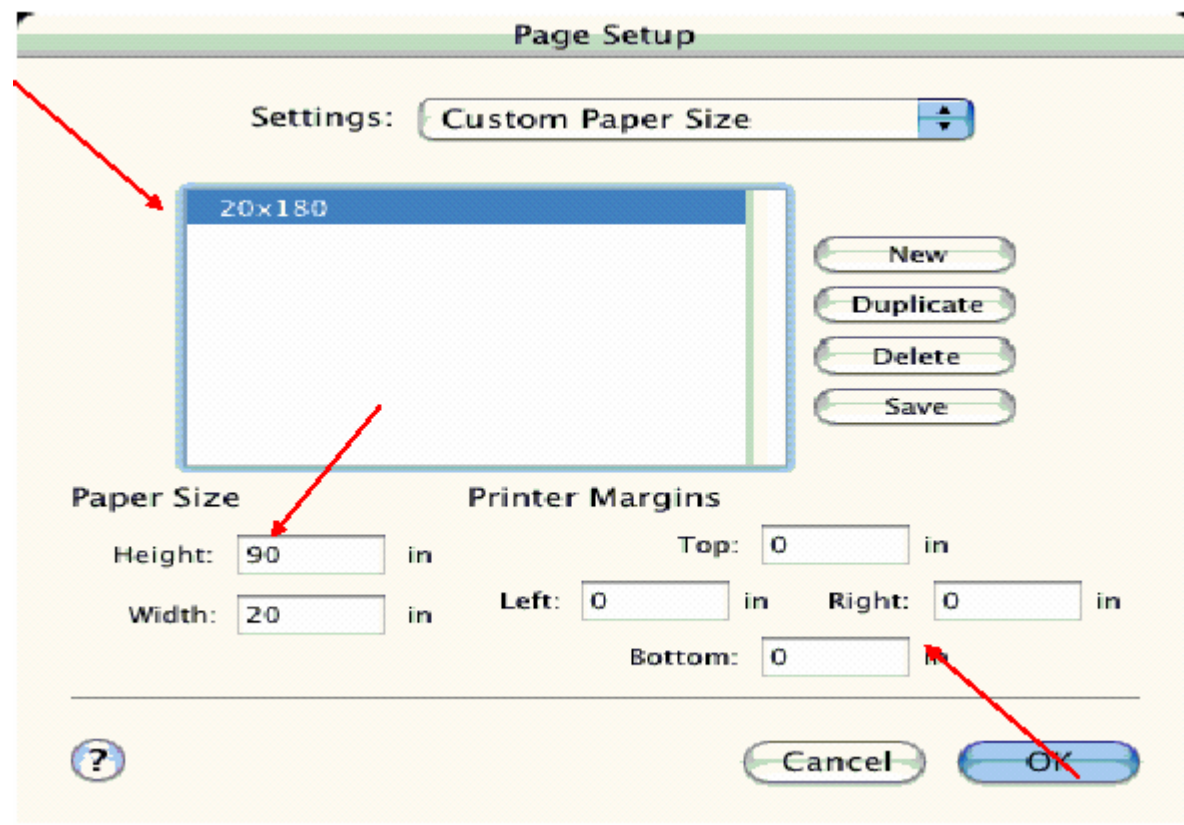


9. When **Page Setup** is open, click on the down arrow for **Custom Paper Size**.

**NOTE:**

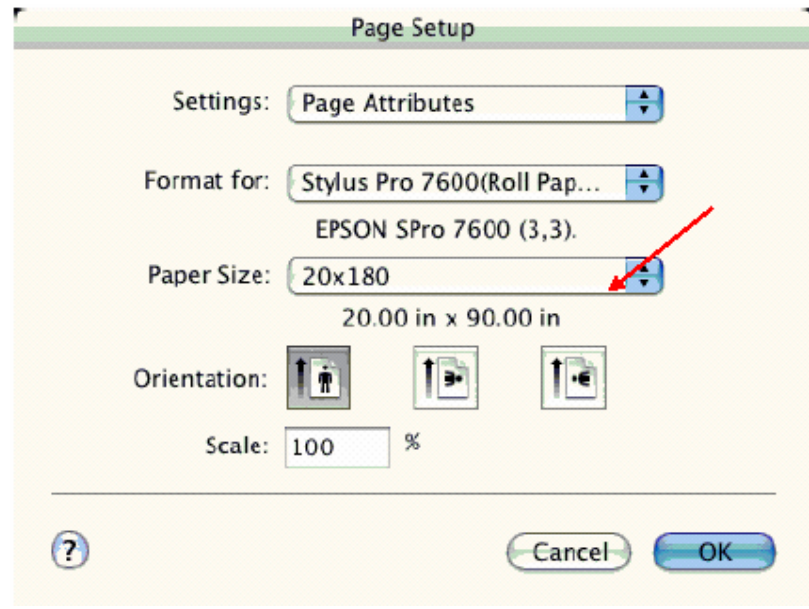
When creating the custom page size, divide the banner size by a value that will make it less than the printer maximum custom page size (90.5 inches). In this example we take  $(180/2 = 90)$ , therefore the custom page size created would be 20x90 (inches).

10. Click on **New**, name the custom size (i.e. 20 x 180 in this example), under **Paper Size** type in 20 inches for the width and 90 inches for the height, margins should be set to zero (0). Click on **Save**. Click on the down arrow again in the **Custom Paper Size** and select **Page Attributes**.



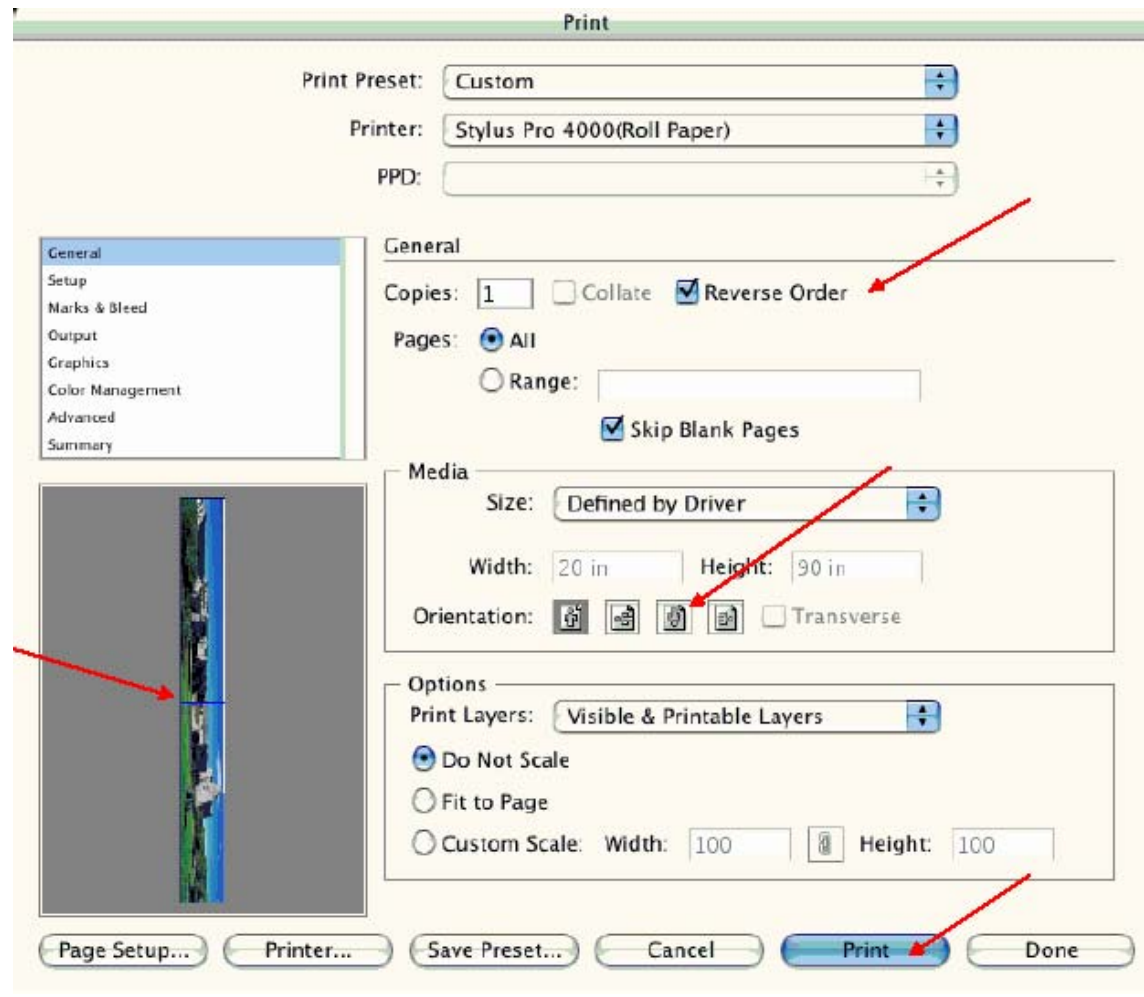


11. Under **Paper Size**, click on the drop down arrow and select the custom paper size you created (i.e. 20 X 180) orientation is set to portrait mode. Then click **OK**.



12. In the **Print** windows the preview pane will show 2 grids or pages. This indicates that a full image is tiled.

13. Click on **General**, then click the square on **Reverse Order**.



4. Click on **Print**.

**NOTE 1:** When enabled, the first page will be printed first, instead of the last page first. Or Change the orientation to “Reverse”, then you don’t have to check the “Reverse Order”.

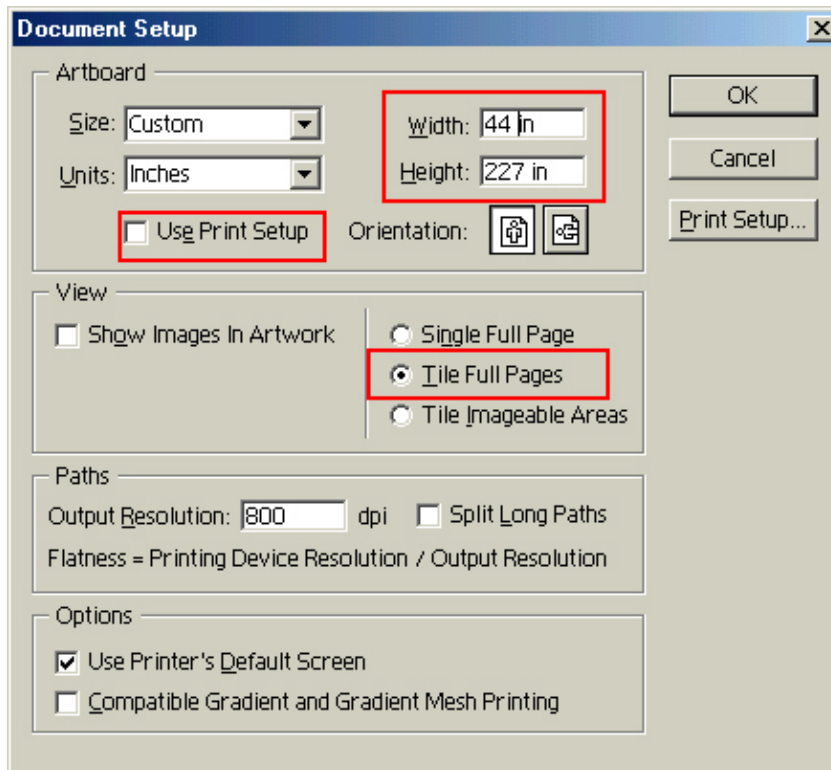
**NOTE 2:** Always select the custom page size last, if not, it will default to other paper sizes.

**NOTE 3:** Before printing a large document, make sure you have enough ink to prevent getting an Ink Out message, causing the print job to stop and not completing the entire print.

### **Adobe Illustrator 8.x/9.x:**

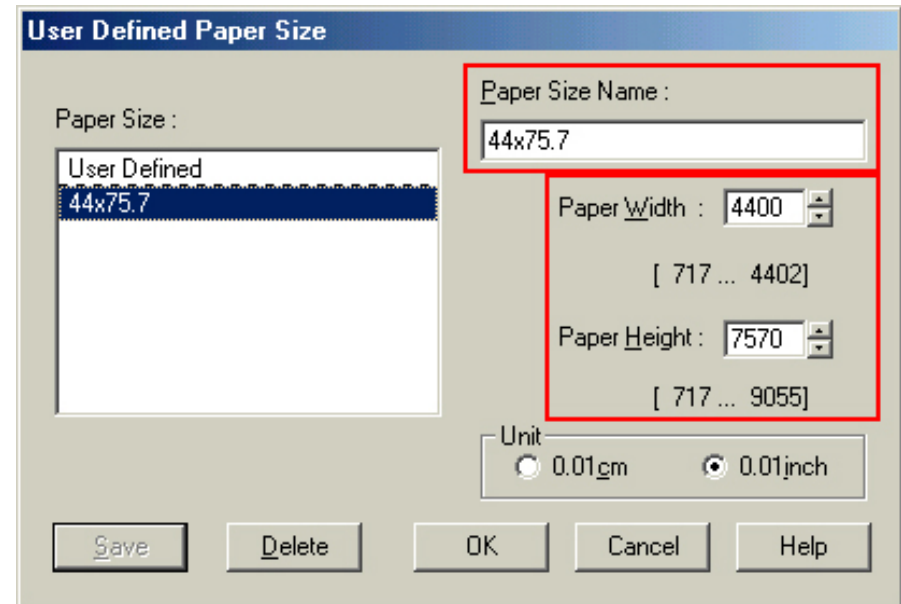
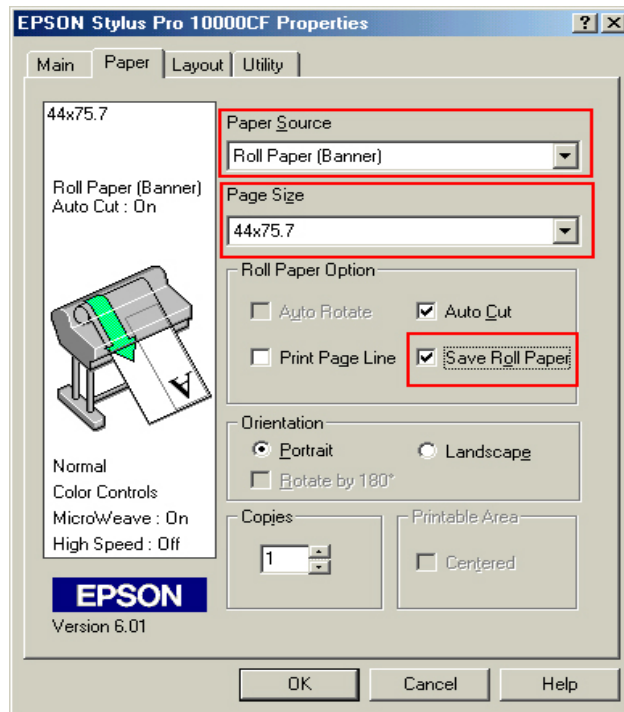
In this example, we are creating a banner, which is 227 inches (Illustrators max. page setup).

1. Launch Illustrator and open or place your file in the page layout.
2. Click on **File**, then **Document Setup**. The following screen appears.
3. Uncheck **Use Print Setup**, enable **Tile Full Pages** and create the page size (in our example we used 44x227 inches).



4. Click, **Print Setup**. This will bring up the print driver.

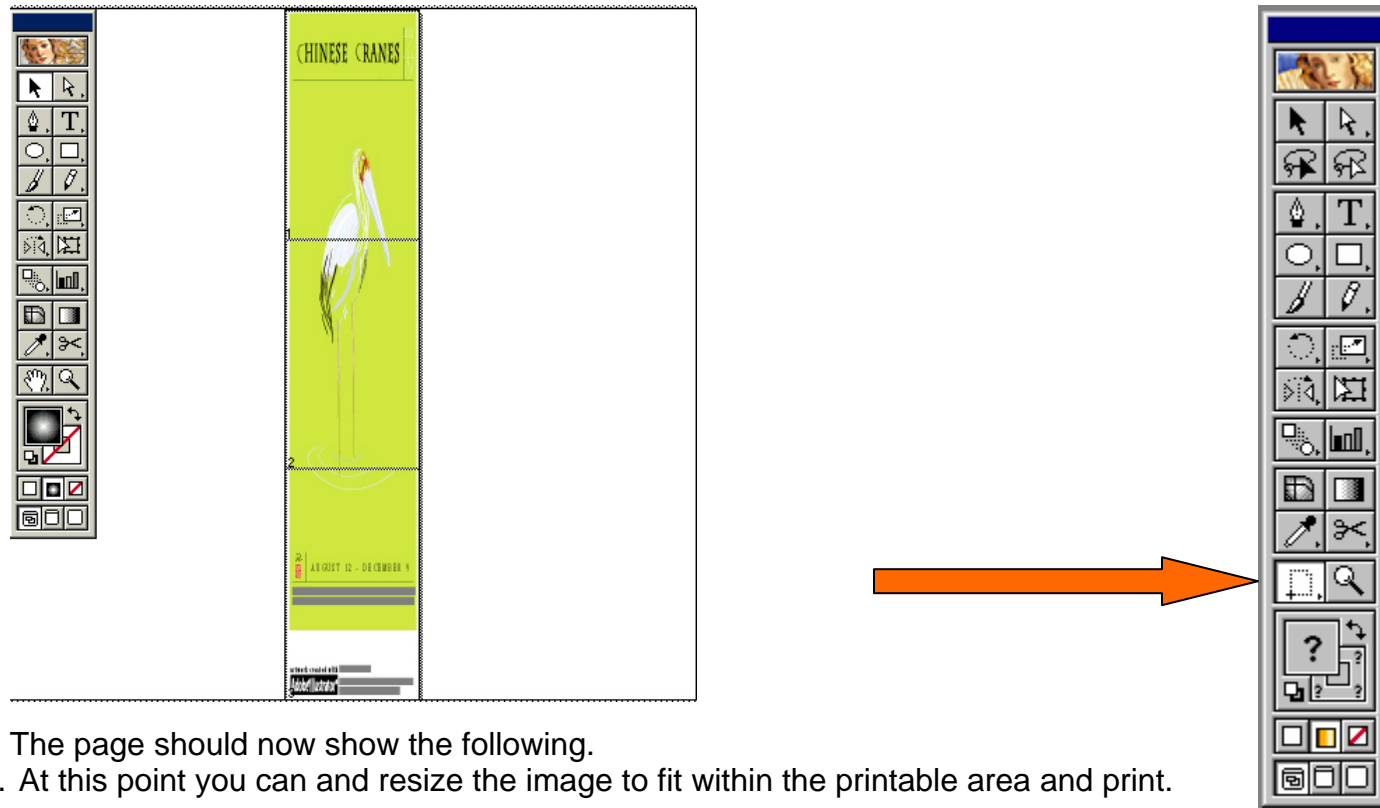
5. Click on the **Paper Tab**. The following appears.



6. Set the **Paper Source** to **Roll Paper (Banner)** and also enable **Save Roll Paper**.

7. When creating the custom page size, divide the banner size by a value that will make it less than the printer maximum custom page size. In this example we take ( $227/3 = 75.7$ ), therefore the custom page size created would be 44x75.7 inches. The reason for this is to save media.

8. After setting the custom page size and other driver settings (media type, resolution, etc.), click **OK**. This will bring you back to the document setup. Now double-click the “Page” tool.

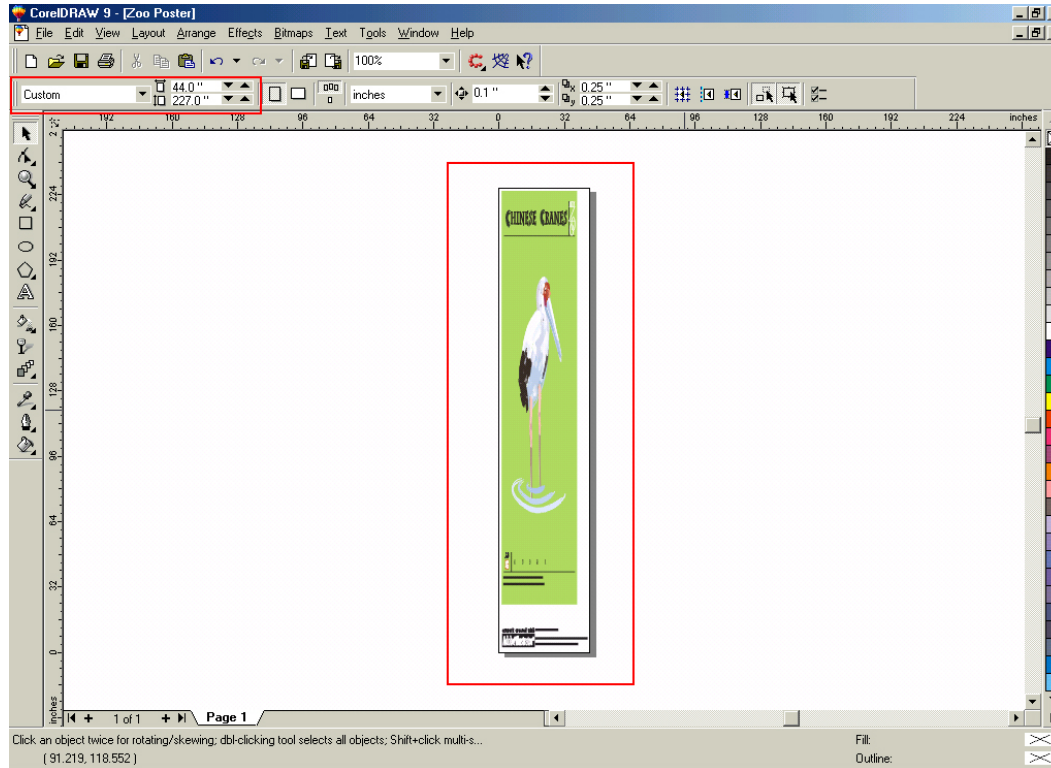


9. The page should now show the following.  
10. At this point you can and resize the image to fit within the printable area and print.

## **CorelDRAW:**

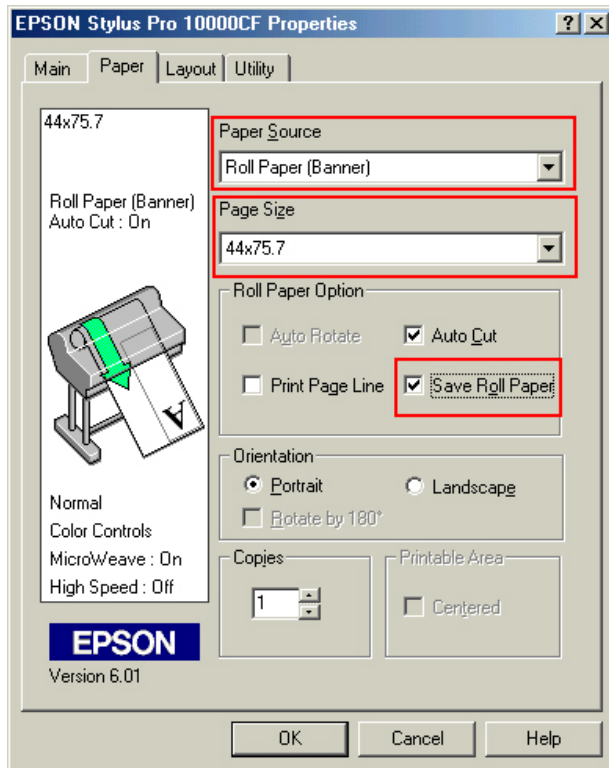
In this example, a banner is created at 227 inches.

1. Launch CorelDRAW and open or place an image in your page layout.
2. Adjust the page size and image for the document as shown in the following image.



3. Click on **File** and **Print Setup**.

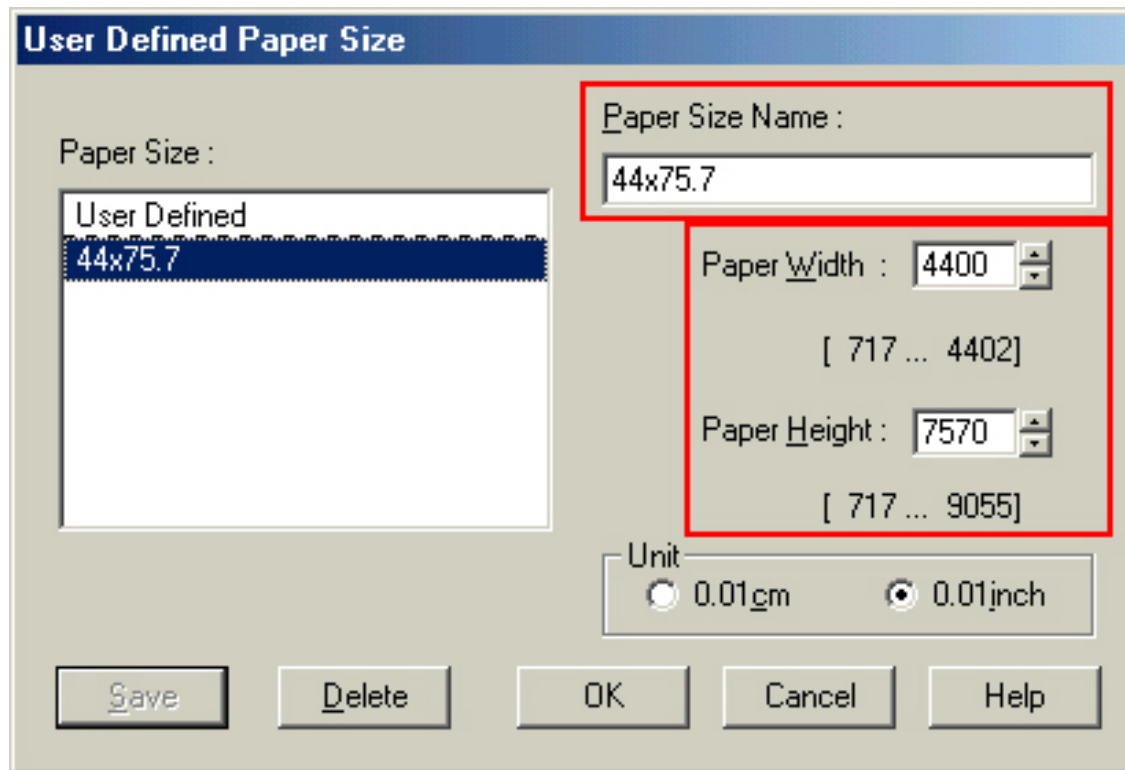
4. Click on the **Paper Tab**. The following appears.



5. Set the **Paper Source** to **Roll Paper (Banner)** and also enable **Save Roll Paper**.

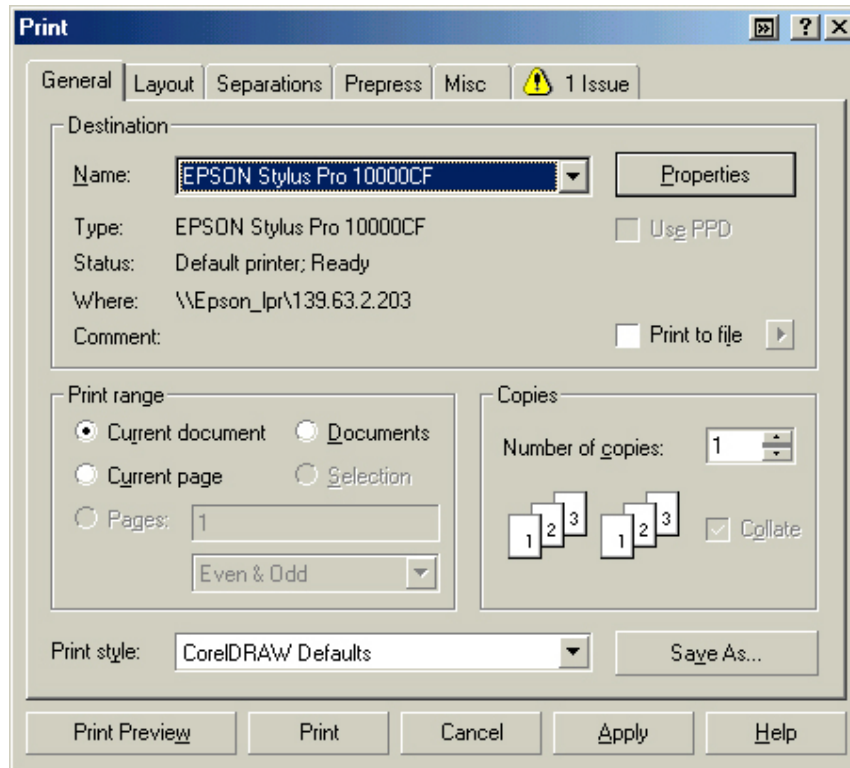


6. When creating the custom page size, divide the banner size by a value that will make it less than the printer maximum custom page size. In this example we take  $(227/3 = 75.7)$ , therefore the custom page size created would be 44x75.7 inches. The reason for this is to save media.

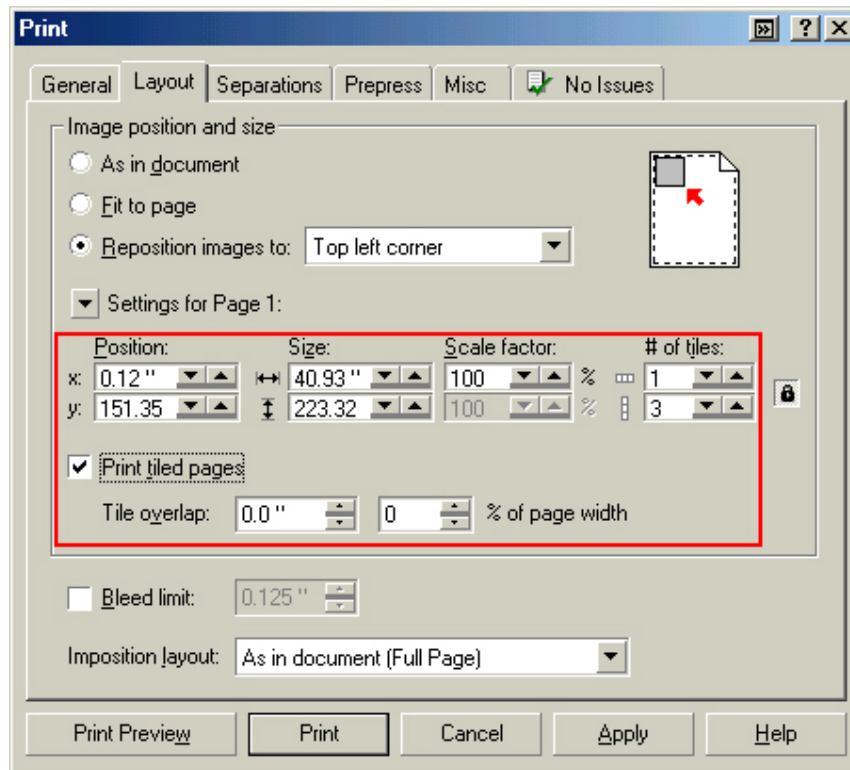


7. After setting the custom page size and other driver settings (media type, resolution, etc.), click **OK**. This will bring you back to the document.

8. At this point, click **File** then **Print**. CorelDRAW will then run a pre-flight check and will show the following window.



9. Click on the **Layout Tab** and enable **Print Tiled Pages** and set any additional parameters as you see fit.



10. At this point you could check other tab settings (if necessary) and click **Print Preview** (recommended) if you want to see how the file will be printed or **Print** to output the file to your printer.

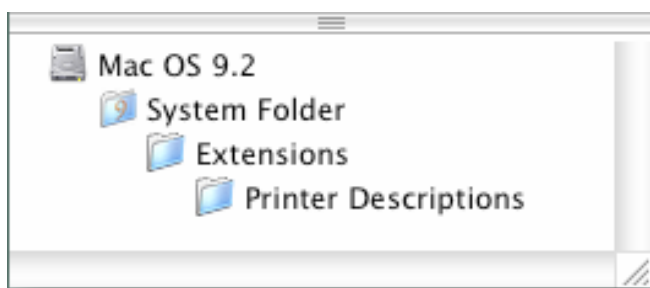
For all other applications, please refer to your software documentation for information on maximum custom page sizes for documents, banners or tiling prints.

# EPSON Product Support Bulletin

Date:	05/06/03	Originator:	ER
PSB #:	PSB.2003.05.002	Authorization:	<i>JA</i>
Reference:	N/A	Total Pages:	3
Product(s):	EPSON Stylus Color 3000 Printer		
Subject:	PostScript Printing Support for Mac OS X Native Mode		

This bulletin provides instructions for installing and configuring a Mac OS X Client with the EPSON Stylus RIP software version 2.1 and above via AppleTalk. Mac OS X version 10.2.5 is required for optimum performance.

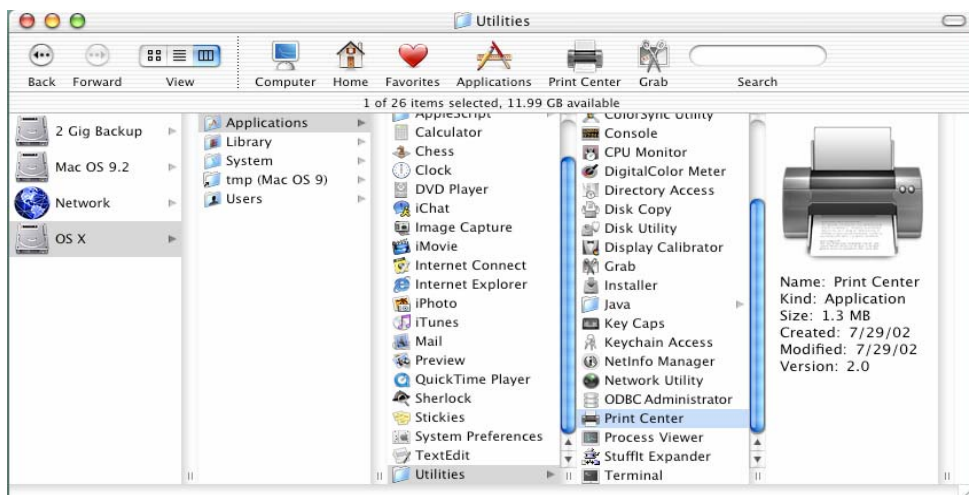
**NOTE:** The extracted PPD files are not available and cannot be copied from the StylusRIP CD directly. You will need to copy them from a Stylus Rip Mac OS 9.2 Server system as shown below. **HDD – System Folder – Extensions - Printer Description.**



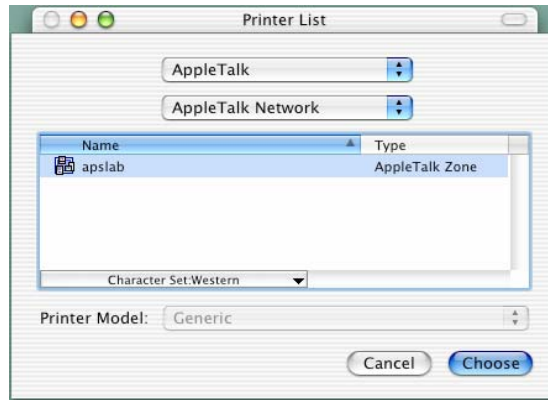
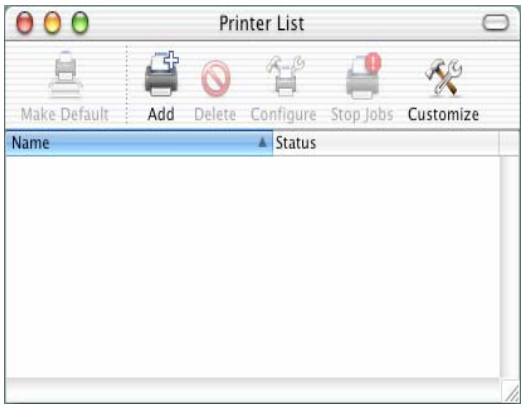
**Suggestion:** Enabling file sharing will assist in getting the PPD to the client Mac OS X computers. Once the PPD is copied, create a folder on the Mac OS X hard drive called **Printer Descriptions** and place the PPD there to gain access when installing the print queue.

## Installation Instructions:

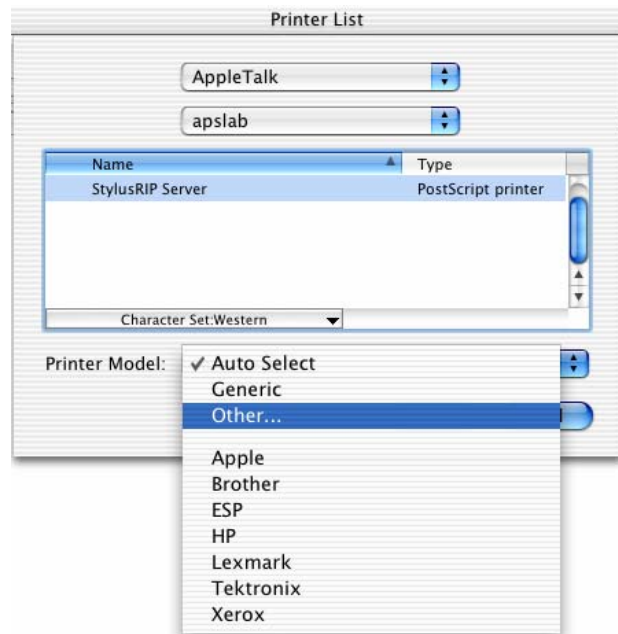
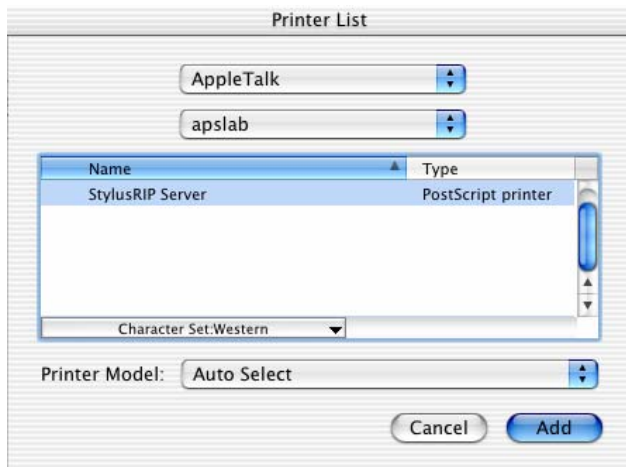
1. Setup your existing Stylus RIP Server as per the instructions provided in the User's Guide that came with the RIP. The printer can be attached to the Stylus RIP server via the optional Ethernet Adapter or USB2 Parallel Adapter Cable.
2. To setup a Mac OS X Version 10.2.5 Client for PostScript printing you will need to install and configure the appropriate PPD file for the Stylus Color 3000 printer.
3. Open the **Print Center**, which can be found on your hard disk drive under **Applications – Utilities**



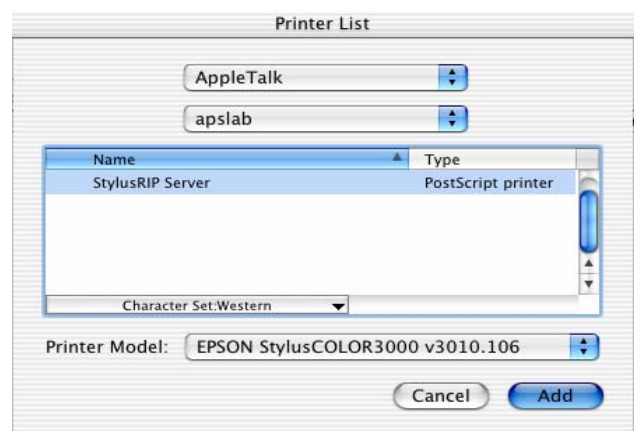
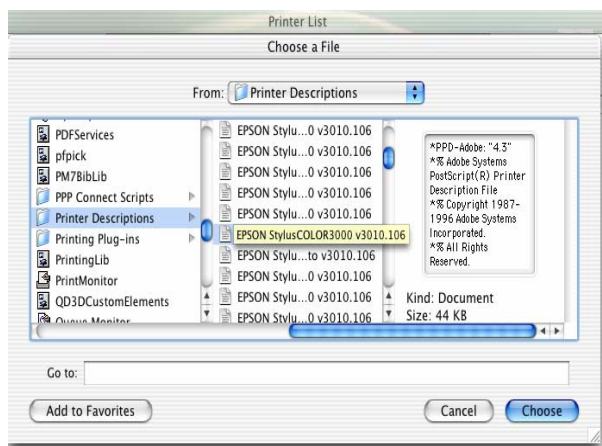
- Click on the **Add** button. Then select **AppleTalk** from the top sub-menu and your **AppleTalk** zone if applicable.



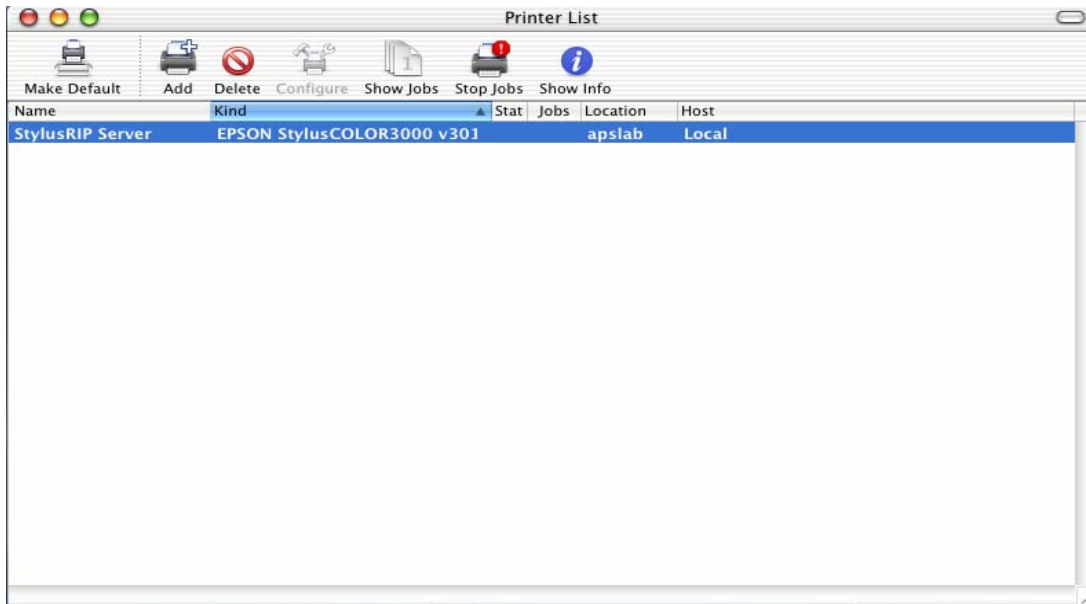
- The **Print Center** should scan the network and find all your devices. Select the **StylusRIP Server** from the list and click on the **Printer Model** sub-menu. Select **Other** to continue.



- Navigate to the location of your PPD file, **StylusRIP EPSON StylusCOLOR3000 v3010.106**. After selecting the PPD file it should reflect the name of the printer under the **Printer Model** section. Click on the **Add** button.



7. Once you have completed adding the Stylus COLOR 3000 PPD, The **Printer List** should now show the **StylusRIP EPSON StylusCOLOR3000 v3010.106** queue.
8. To print simply set the **StylusRIP EPSON StylusCOLOR3000 v3010.106** queue as default.



# EPSON Product Support Bulletin

Date:	09/25/2002	Originator:	MS
PSB #:	PSB.2002.09.004	Authorization:	<i>MS</i>
Reference:	N/A	Total Pages:	
Product(s):	EPSON Stylus Pro 9000, 9500, 9600, 7000, 7500, 7600, 10000, 10600, 5000, 5500 and Stylus Color 3000 Printers		
Subject:	PostScript Printing Support for Mac OS X Native Mode		

This bulletin provides instructions for installing and configuring a Mac OS X Client with your existing EPSON hardware or software RIP. If your EPSON Professional Wide Format printer was bundled with one of the RIP packages listed below, or if you had purchased the RIP as an option, then you can configure a Mac OS X Client with OS Version 10.2 and above for PostScript printing by simply installing the appropriate RIP PPD.

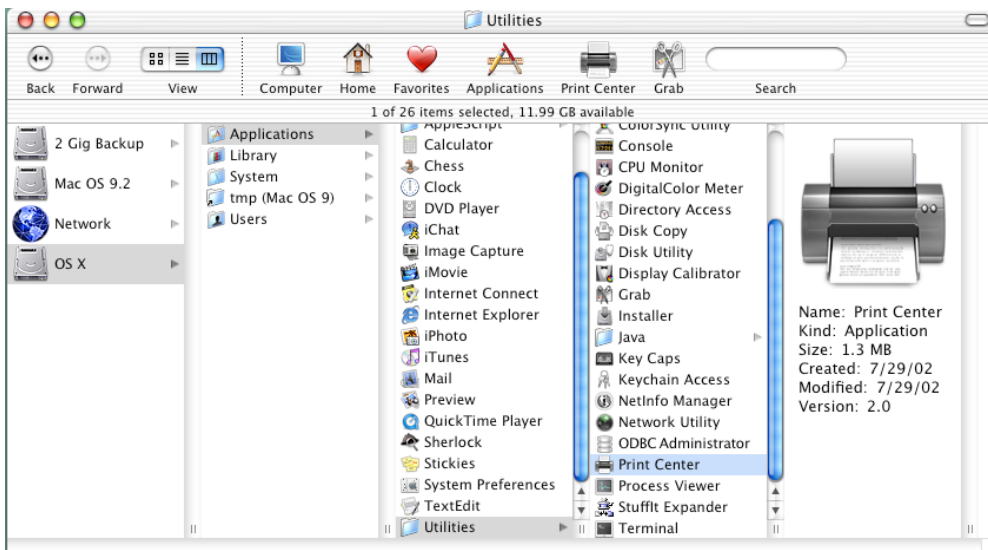
- EFI RS 5000 LX Series – Stylus Pro 5000 printer
- EFI RS 5100 X2 Series - Stylus Pro 9000, 7000, 9500 and 7500 printers
- Fiery Spark Designer – Stylus Pro 5500 printer
- Fiery Spark Professional 1.0 – Stylus Pro 5500 and Stylus Pro 10000ARC/DYE printers
- Fiery Spark Professional 2.0 – Stylus Pro 9600UCM/7600UCM printers
- EPSON StylusRIP - Stylus Color 3000 and Stylus Pro 5000 printers

## Installation Instructions:

Setup your existing RIP Server as per the instructions provided in the User's Guide that came with your RIP. To setup a Mac OS X Version 10.2 Client follow the instructions below. There are two ways you can add a PPD and configure your printer in OS X, **AppleTalk** or **IP Printing**.

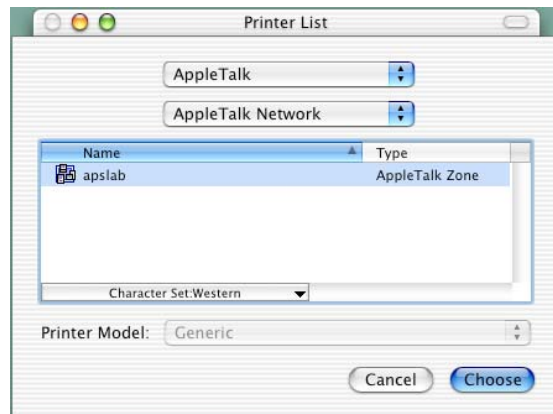
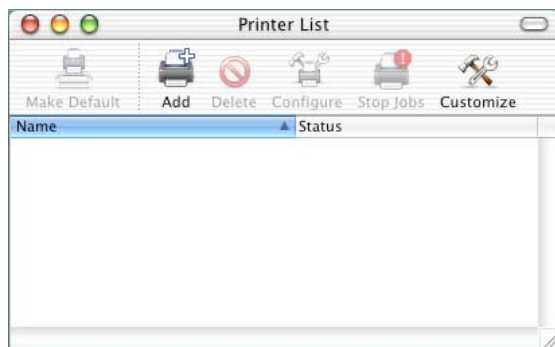
### AppleTalk Installation:

1. Open the **Print Center**, which can be found on your hard disk driver under **Applications - Utilities**

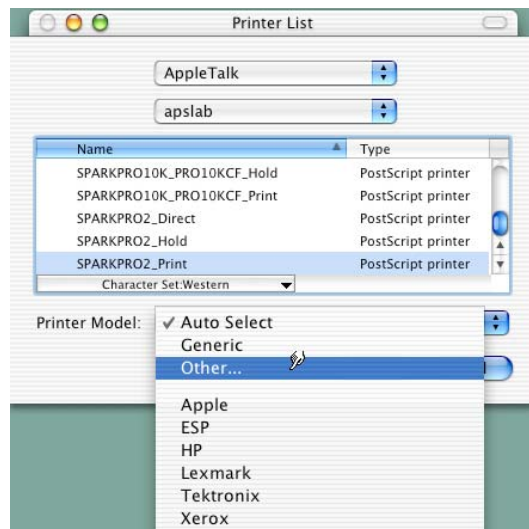
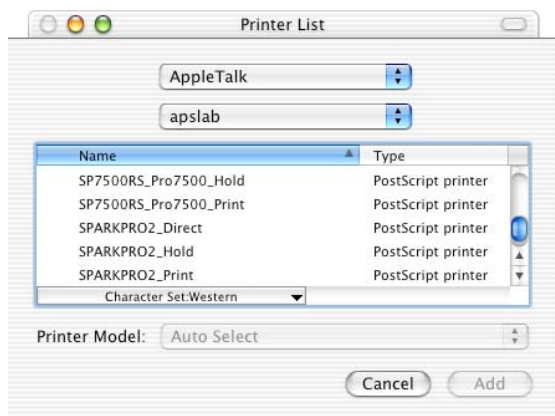




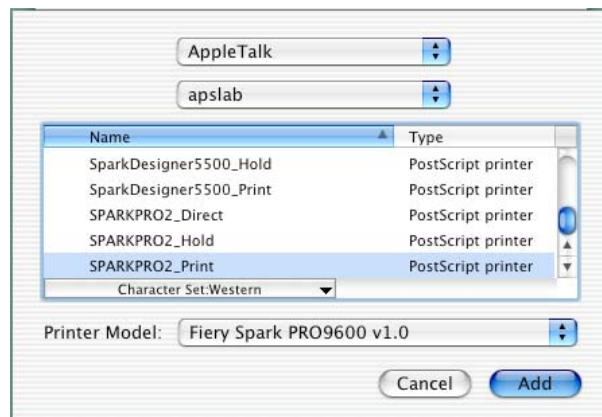
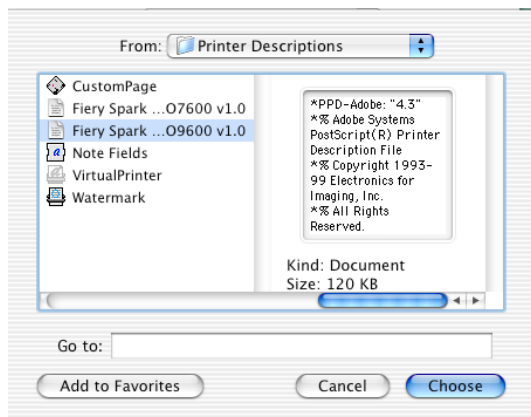
- Click on the **Add** button. Then select **AppleTalk** from the top sub-menu and your **AppleTalk** zone if applicable.



- The **Print Center** should scan the network and find all your devices. Select your printer from the list and click on the **Printer Model** sub-menu. Select **Other** to continue.



- Navigate to the location of your PPD file. After selecting the PPD file it should reflect the name of the printer under the **Printer Model** section. Click on the **Add** button.

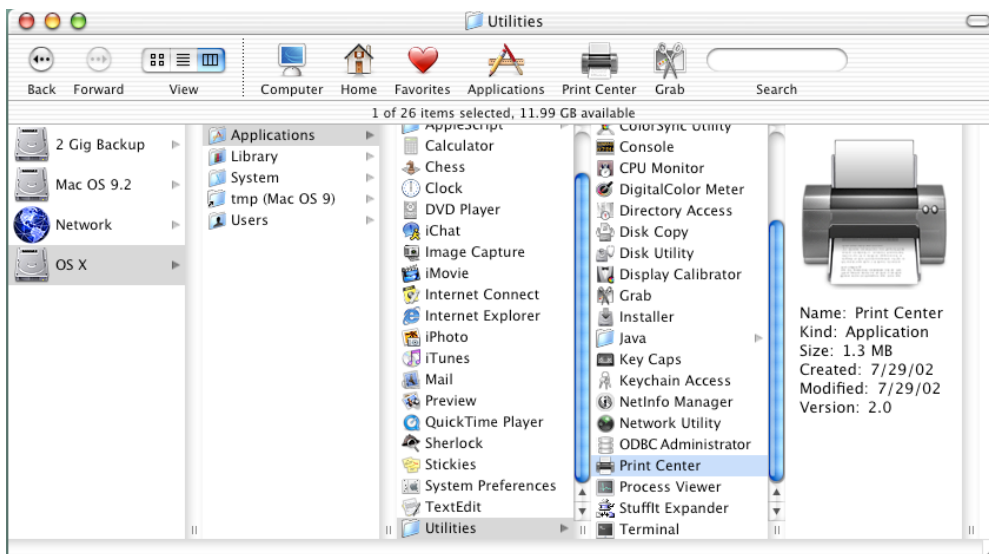


- Repeat the process to add your additional queues. Your Mac OS X Client should now be ready to print.

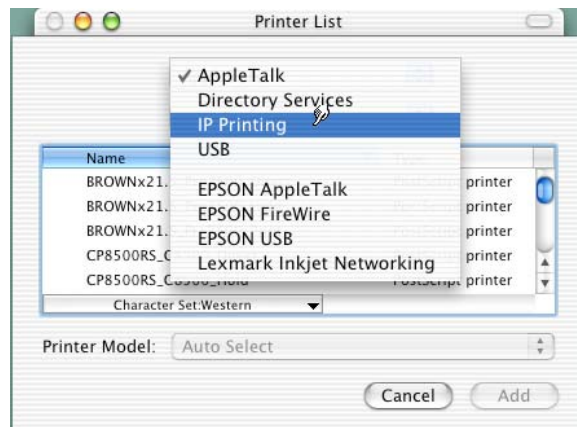
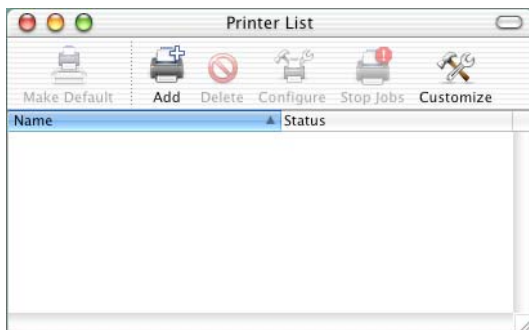


## IP Printing Installation:

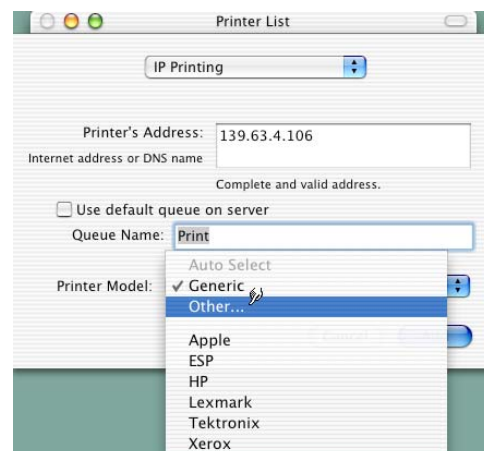
1. Open the **Print Center**, which can be found on your HDD under **Applications - Utilities**



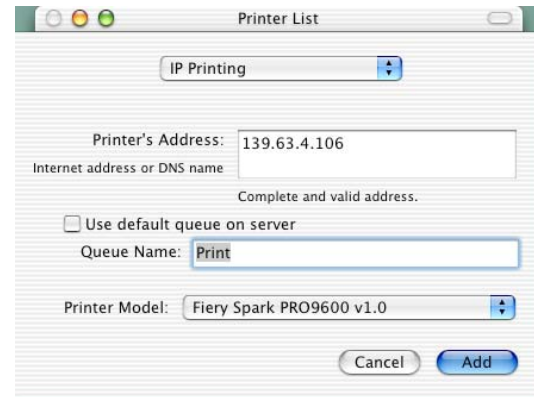
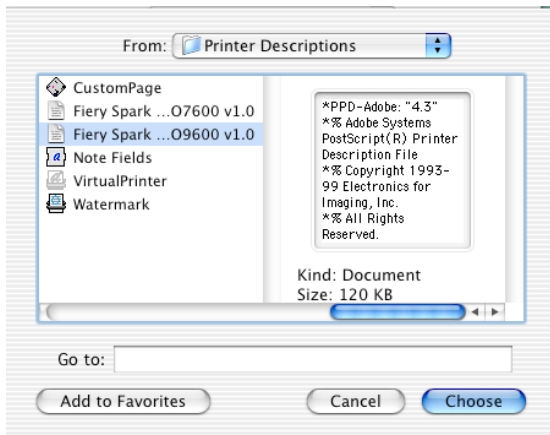
2. Click on the **Add** button and select **IP Printing** from the sub-menu.



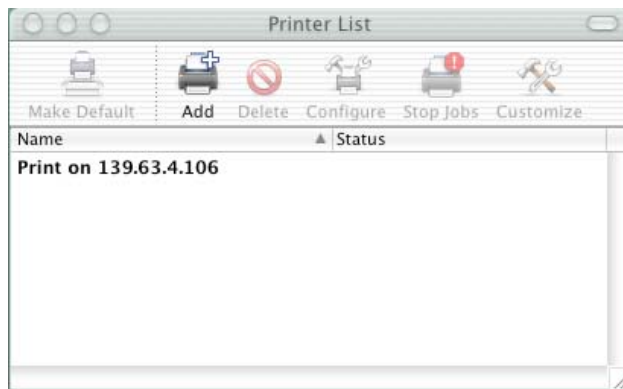
3. Enter the IP Address of the Postscript Server under **Printer's Address**. Uncheck the **Use default queue on server** and type in the queue you wish to add. Click on the **Printer Model** sub-menu and select **Other**.



4. Navigate to the location of your PPD file. After selecting the PPD file it should reflect the name of the printer under the **Printer Model** section. Click on the **Add** button.

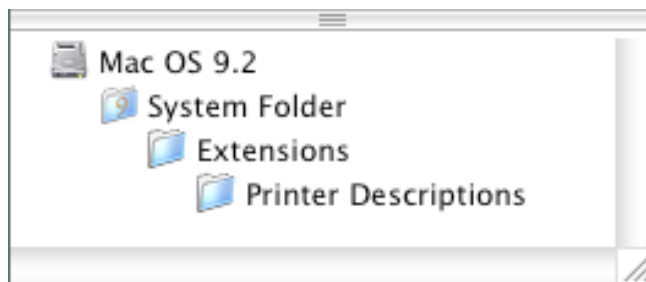


5. The Print Center should now show the Queue that you typed along with the IP address.



6. Repeat the process to add your additional queues. Your Mac OS X Client should now be ready to print.

Note: The StylusRIP does not have a separate folder on the CD to select the printer's PPD. In order to select the PPD it must be copied from another client's **Printer Description folder** as shown below (HDD - System folder - Extensions folder - Printer Description folder).



# EPSON PRODUCT SUPPORT BULLETIN

---

<b>Date:</b>	8/8/02	<b>Originator:</b>	RR
<b>PSB #:</b>	PSB.2002.01.001A	<b>Authorization:</b>	<i>RR</i>
<b>Reference:</b>	PSB.2002.01.001	<b>Total Pages:</b>	12
<b>Product(s):</b>	EPSON Stylus Color 3000, Stylus Pro 5000, 5500, 7000 Series, 7600 Series, 9000 Series, 9600 Series and 10000 Series		
<b>Subject:</b>	Maximum Printable Area Limits for the EPSON Professional Graphic Printer line.		

---

This bulletin was created to inform you of the maximum custom page sizes allowable for EPSON Professional Graphic products. The tables below show the maximum page sizes allowable for the EPSON Professional Graphics printer line (Desktop and Large Format). Although this document is meant as a guideline for the maximum page size allowable for each printer, it does not include printable area (margin) information. Please refer to your user guide for additional information regarding the printable area (margins) for your particular printer. There are 3 aspects that effect how long of a page your printer can output. Those 3 items are:

1. Operating System.
2. Driver Specification.
3. Software application(s) being used.

## **Maximum custom page size allowable per operating system (for Epson standard driver):**

	Stylus Color 3000	Stylus Pro 5000	Stylus Pro 5500	Stylus Pro 7000	Stylus Pro 7500	Stylus Pro 7600	Stylus Pro 9000	Stylus Pro 9500	Stylus Pro 9600	Stylus Pro 10000 Series
Macintosh OS	44 in.	44 in.	44 in.	90.5 in.	90.5 in.	90.5 in.	90.5 in.	90.5 in.	90.5 in.	90.5 in.
Win 9x/Me	44 in.	44 in.	44 in.	90.5 in.	90.5 in.	90.5 in.	90.5 in.	90.5 in.	90.5 in.	90.5 in.
Win NT 4.0/2000/XP	44 in.	44 in.	44 in.	590.5 in.	590.5 in.	590.5 in.	90.5 in.	590.5 in.	590.5 in.	590.5 in.

Print jobs being sent through the Epson standard print driver should be in the RGB format in order for color management to be utilized properly.

### **Maximum custom page size allowable for EPSON PostScript options (PPD):**

	Stylus Color 3000	Stylus Pro 5000	Stylus Pro 5500	Stylus Pro 7000	Stylus Pro 7500	Stylus Pro 7600	Stylus Pro 9000	Stylus Pro 9500	Stylus Pro 9600	Stylus Pro 10000 Series
EPSON Stylus RIP	44 in.	44 in.	N/A	N/A	N/A	N/A	N/A	N/A	N/A	N/A
EPSON Fiery RIP Station	N/A	44 in.	N/A	See NOTE 1	See NOTE 1	N/A	See NOTE 1	See NOTE 1	N/A	N/A
EPSON Fiery Spark Designer (Mac)	N/A	N/A	44 in.	N/A	N/A	N/A	N/A	N/A	N/A	N/A
EPSON Fiery Spark Professional	N/A	N/A	44 in.	N/A	N/A	See NOTE1	N/A	N/A	See NOTE1	See NOTE 1

Print jobs being sent through the Epson PostScript driver can be either RGB or CMYK format. Settings in the RIP will determine how color management is used.

### **Maximum page size allowable from software applications:**

	Stylus Color 3000	Stylus Pro 5000	Stylus Pro 5500	Stylus Pro 7000	Stylus Pro 7500	Stylus Pro 7600	Stylus Pro 9000	Stylus Pro 9500	Stylus Pro 9600	Stylus Pro 10000 Series
Adobe Photoshop 5.x/6.x	See NOTE 2	See NOTE 2	See NOTE 2	See NOTE 2	See NOTE 2	See NOTE 2	See NOTE 2	See NOTE 2	See NOTE 2	See NOTE 2
*Adobe Illustrator 8.x/9.x	227 in.	227 in.	227 in.	227 in.	227 in.	227 in.	227 in.	227 in.	227 in.	227 in.
QuarkXPress 4.x	48 in.	48 in.	48 in.	48 in.	48 in.	48 in.	48 in.	48 in.	48 in.	48 in.
*CorelDRAW 8.x/9.x	1,800 in.	1,800 in.	1,800 in.	1,800 in.	1,800 in.	1,800 in.	1,800 in.	1,800 in.	1,800 in.	1,800 in.

\* - These applications allow for tiling of print pages, therefore allowing you to print beyond the printers maximum page length limit and print to the applications limits. The printer driver must be set for Roll Paper (Banner) mode so that page breaks at the printer's maximum page length do not occur (in essence gives you a 0 margin for the bottom of the page). The Stylus Pro 5000/5500 however will give a slight page break at the 44 inch limit as these printers do not support banner mode. Also, printing certain elements from these applications may not utilize color management correctly/properly and may produce output color that is not expected.

**NOTE 1:**

- a. Under Win 9x/Me, the PPD limit is 129 inches.
- b. Under Windows NT, 2000 and XP, the PPD limit is 1771.6 inches (SP7000/9000 Series) and 1800 inches (SP7600/9600/10000 Series).
- c. Under Mac OS 8.x/9.x, the PPD limit is 273.06 inches.

**NOTE 2:**

Adobe Photoshop has a pixel limitation of 30,000 pixels, which means that a document created @ 300ppi can only reach a maximum page size of 100 inches (H and V). When sending jobs to the printer via the standard non-PostScript print driver, Photoshop looks at the input resolution of the printer driver and adjusts the page size accordingly. All Epson large format printers use 360dpi as the input resolution (this is the resolution data is rasterized at), therefore when printing from Photoshop, the maximum page length you will be able to output to any Epson large format printer using the standard Epson print driver would be 83.33 inches (30,000 pixels / 360dpi). As for the Epson desktop products, they rasterize data at 720dpi, therefore the maximum page length obtainable with the standard print driver would be 41.67 inches (30,000 pixels / 720dpi).

Also, under Photoshop 5.x/6.x for the Macintosh and Photoshop 6.x for the PC, the job will end up clipped if it is over the 83.3inch printer page limit. If you are using Photoshop 5.x for the PC, the print job will actually be truncated to fit within the printable area of the printer. Be advised that you may not get a page size error. It may be useful to enable the "print preview" function of your printer driver (if available) so that you do not waste unnecessary media.

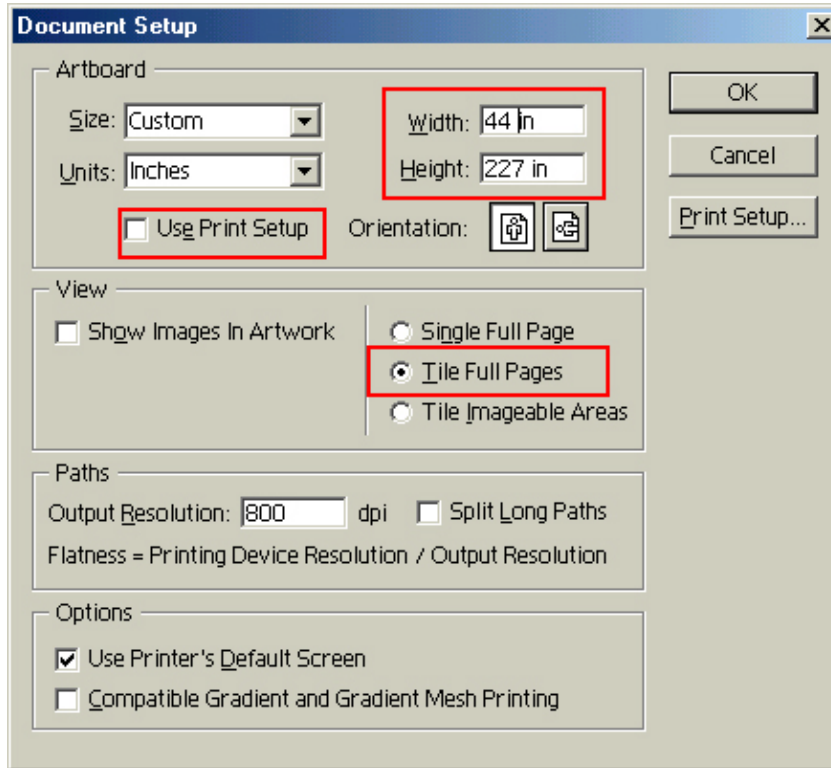
The only options for printing beyond the limitations is to save the file and print via an application that does not have the 30,000 pixel limit (may lose color management functions) or print the file through a PostScript RIP (which will allow for longer pages).

The following examples show how to setup banner printing from Adobe Illustrator 8.01 and CoreIDRAW 9 from the PC platform. The Macintosh versions of these applications should be very similar in function. Please refer to your software documentation for additional assistance.

## **Adobe Illustrator 8.01:**

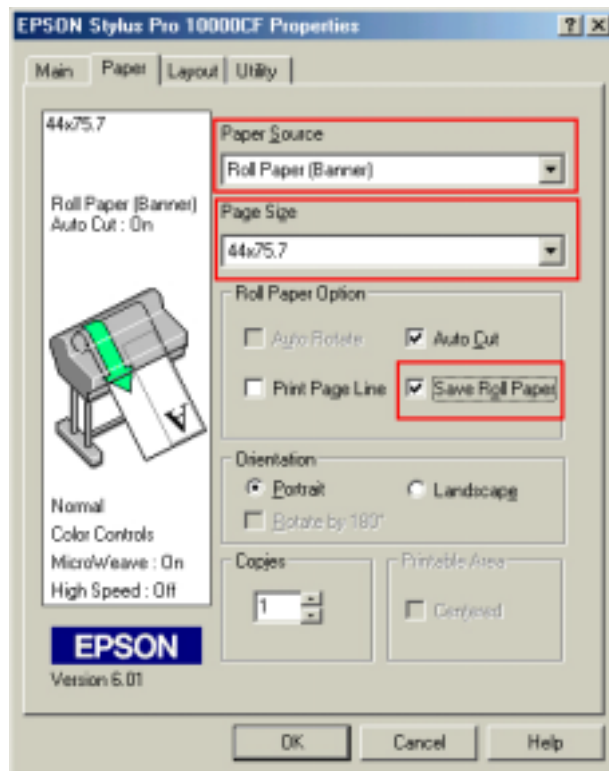
In this example, we are creating a banner, which is 227 inches (Illustrators max. page setup).

1. Launch Illustrator and open or place your file in the page layout.
2. Click on **File**, then **Document Setup**. The following screen appears.



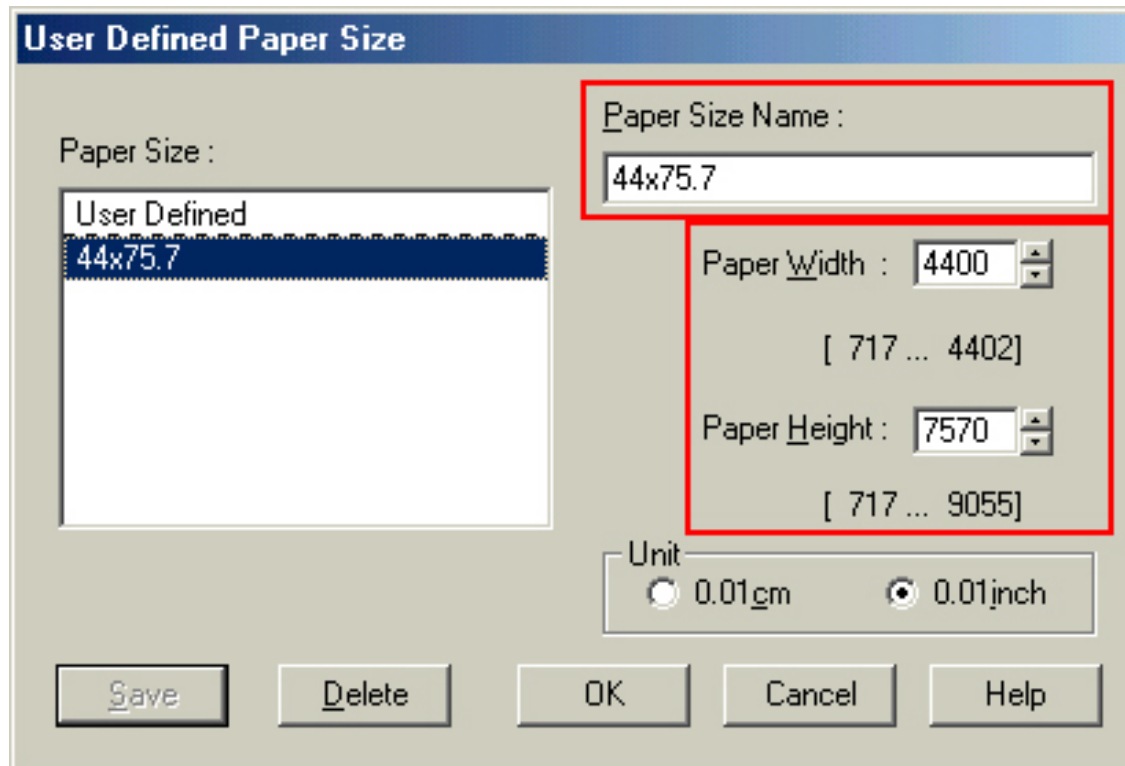
3. Uncheck **Use Print Setup**, enable **Tile Full Pages** and create the page size (in our example we used 44x227 inches).
4. Click, **Print Setup**. This will bring up the print driver.

5. Click on the **Paper Tab**. The following appears.



6. Set the **Paper Source** to **Roll Paper (Banner)** and also enable **Save Roll Paper**.

7. When creating the custom page size, divide the banner size by a value that will make it less than the printer maximum custom page size (not necessary for OS/Drivers that support 590.5 inches). In this example we take  $(227/3 = 75.7)$ , therefore the custom page size created would be 44x75.7 inches. The reason for this is to save media.



The image shows a 'User Defined Paper Size' dialog box. It has a title bar with the same text. On the left, under 'Paper Size:', there is a list box with 'User Defined' and '44x75.7' (the latter is selected). On the right, there is a 'Paper Size Name:' text box containing '44x75.7'. Below this, 'Paper Width:' is set to '4400' with a range of '[ 717 ... 4402]'. 'Paper Height:' is set to '7570' with a range of '[ 717 ... 9055]'. At the bottom right, the 'Unit' is set to '0.01inch' (selected over '0.01cm'). At the bottom are buttons for 'Save', 'Delete', 'OK', 'Cancel', and 'Help'.

**User Defined Paper Size**

Paper Size :

- User Defined
- 44x75.7**

Paper Size Name : 44x75.7

Paper Width : 4400 [ 717 ... 4402]

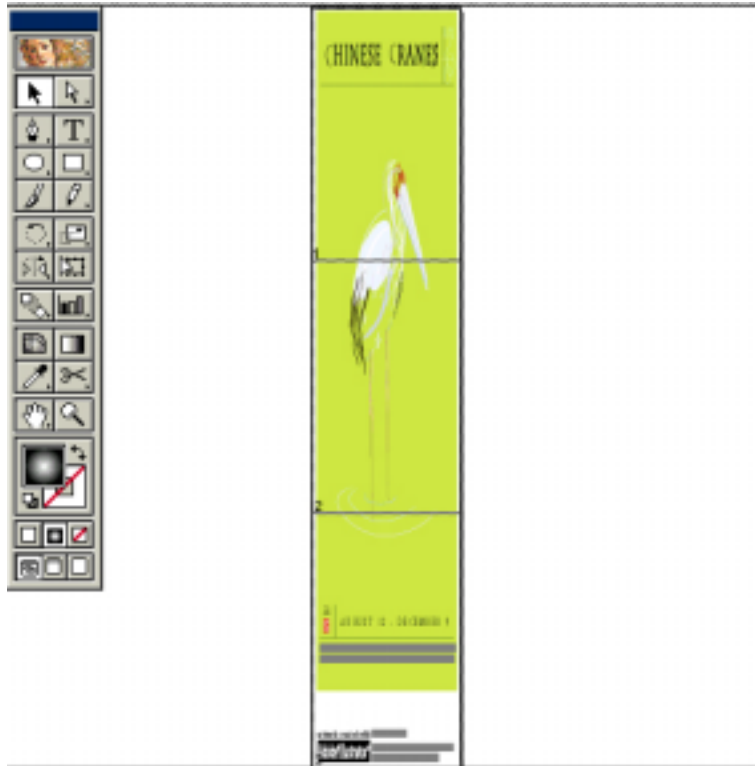
Paper Height : 7570 [ 717 ... 9055]

Unit  
☐ 0.01cm ☒ 0.01inch

Save Delete OK Cancel Help



8. After setting the custom page size and other driver settings (media type, resolution, etc.), click **OK**. This will bring you back to the document setup. The page should now show the following.



9. At this point you can and resize the image to fit within the printable area and print.

## **CorelDRAW 9:**

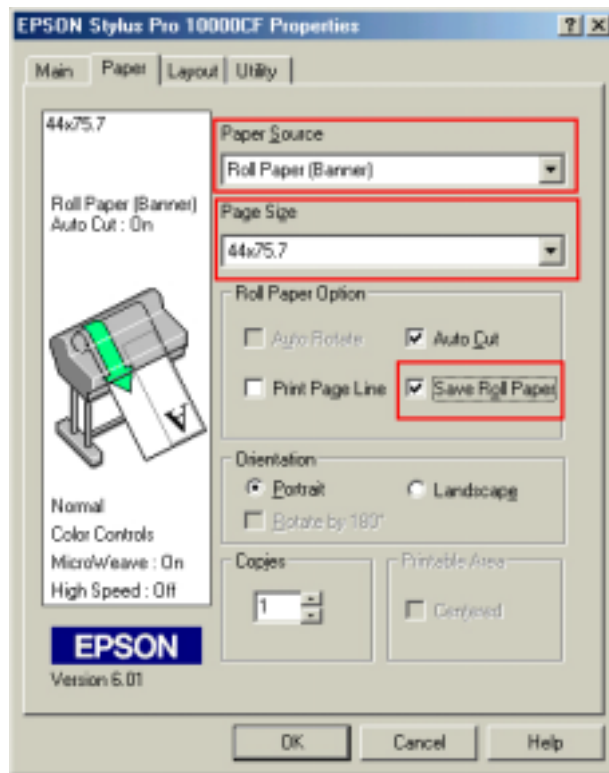
In this example, a banner is created at 227 inches.

1. Launch CorelDRAW and open or place an image in your page layout.
2. Adjust the page size and image for the document as shown in the following image.



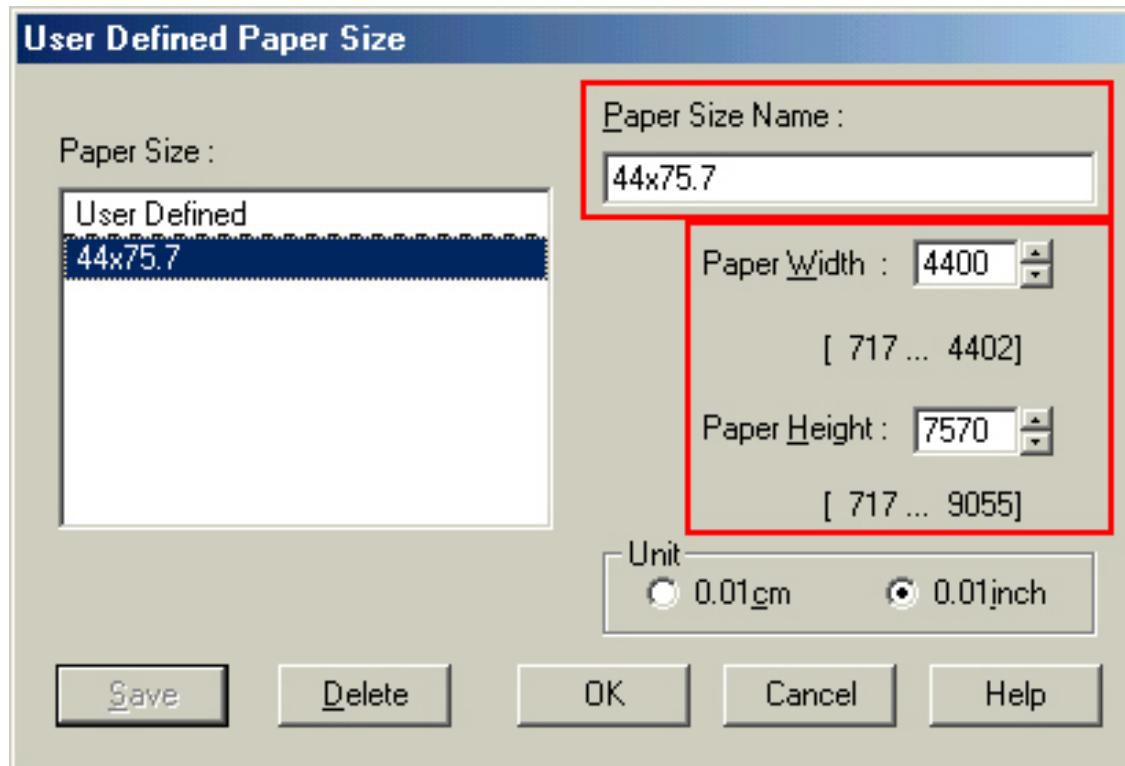
3. Click on **File** and **Print Setup**.

4. Click on the **Paper Tab**. The following appears.



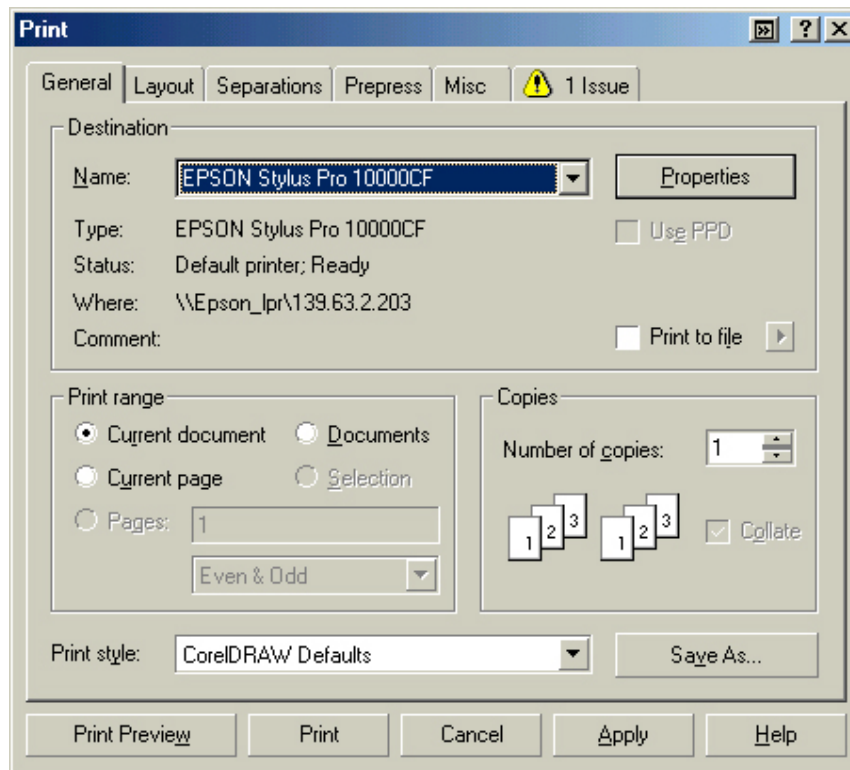
5. Set the **Paper Source** to **Roll Paper (Banner)** and also enable **Save Roll Paper**.

- When creating the custom page size, divide the banner size by a value that will make it less than the printer maximum custom page size (not necessary for OS/Drivers that support 590.5 inches, unless the document is beyond that size). In this example we take  $(227/3 = 75.7)$ , therefore the custom page size created would be 44x75.7 inches. The reason for this is to save media.

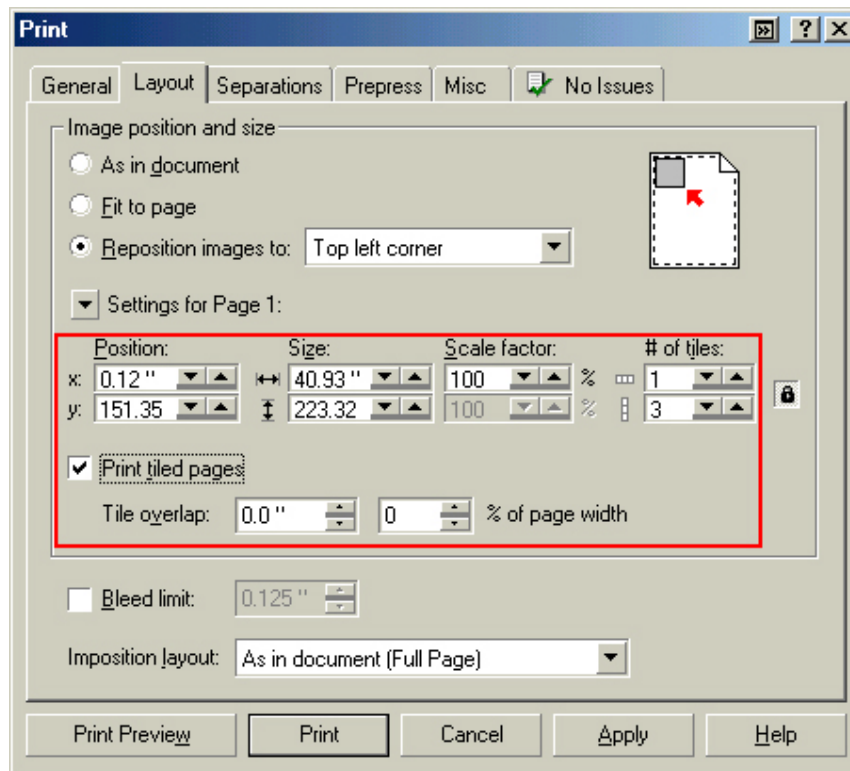


- After setting the custom page size and other driver settings (media type, resolution, etc.), click **OK**. This will bring you back to the document.

8. At this point, click **File** then **Print**. CorelDRAW will then run a pre-flight check and will show the following window.



9. Click on the **Layout Tab** and enable **Print Tiled Pages** and set any additional parameters as you see fit.



10. At this point you could check other tab settings (if necessary) and click **Print Preview** (recommended) if you want to see how the file will be printed or **Print** to output the file to your printer.

For all other applications, please refer to your software documentation for information on maximum custom page sizes for documents, banners or tiling prints.

# EPSON PRODUCT SUPPORT BULLETIN

**Date:** 08/06/2001

**PSB No.:** 2001.08.001

**Reference:**

**Originator:** RR

**Authorization:** 

**Affected Product(s):** Stylus Pro 5000, Stylus Color 3000

**Subject:** EPSON Stylus RIP 2.02/2.03 Windows Me and Windows 2000 Installation Procedures

This bulletin provides instructions on how to install the EPSON Stylus RIP 2.02/2.03 with Windows Me and Windows 2000 for the EPSON Stylus COLOR 3000 and Stylus Pro 5000 printers.

## Windows Me:

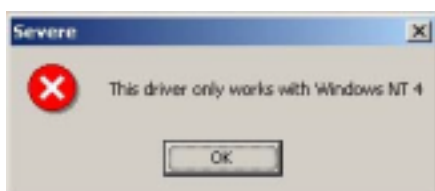
Follow the installation instructions for Windows 95/98 that came with your EPSON Stylus RIP package.

## Windows 2000:

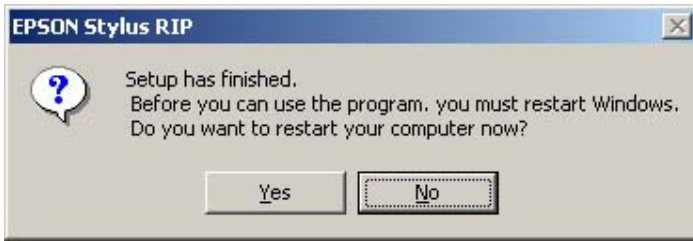
1. Download the Adobe Universal PS Installer v1.04 from Adobe's Web Site (<http://www.adobe.com/support/downloads/8a0e.htm>).
2. Install EPSON Stylus RIP 2.02 (SC3000), 2.03 (SP5000), which came with your product, and follow the screen prompts.



3. Click Finish to complete the installation of Stylus RIP.
4. At this point, the Adobe PS 5 installer will auto-launch and give an error "this driver only works with Windows NT 4". At this point, click OK.



5. You will be prompted to restart Windows, select yes and Restart.



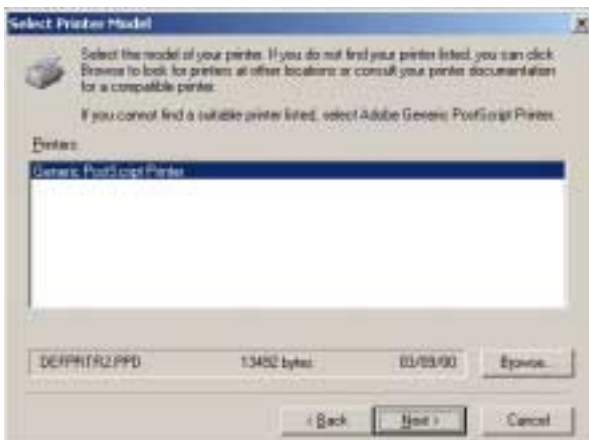
6. Once back at the Windows Desktop, double-click the Adobe PS Installer that was downloaded and follow the screen prompts.



7. Once at the “Local Port Selection” screen, select Stylus RIP for the port and click next.

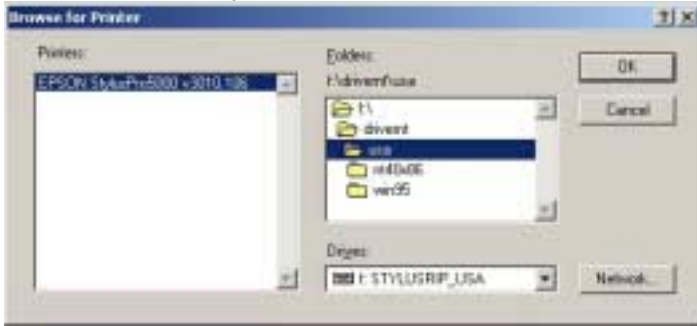


8. At the “Select Printer Model” screen, click Browse and navigate to the Stylus RIP CD’s DriverNT\USA Folder.





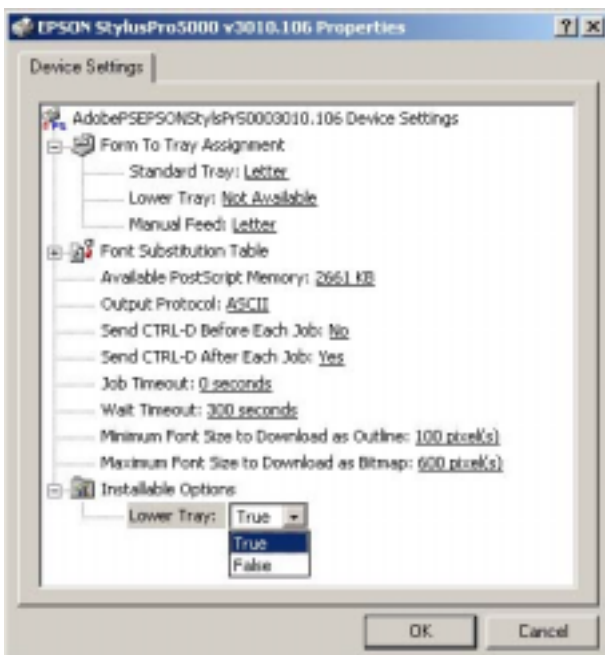
9. Select the PPD for your Printer (**Note PPD Names**) and click OK to continue with the driver installation.



10. (Stylus Pro 5000 only): If you have the optional Lower Paper Cassette and you get to the screen for configuring options, select yes for configuring options and click next to bring up the printer properties.



11. Set the Lower Tray to True, click OK.



12. Click Finish to complete the install.

13. Launch the Stylus RIP application. If you have an SC3000 that was licensed with an earlier version of Stylus RIP the Stylus RIP Server should open to an Idle State. If the printer does not have a license, you will be prompted to input the software license key. The license key is located:
  - a. Stylus Color 3000 – Located on CD Jewel Case (if After Service Part 3002911)
  - b. Stylus Pro 5000 – Located on the CD-ROM itself (5 licenses)
14. If you need further assistance, contact EPSON Technical Support at (888) 377-6698 for the EPSON Stylus Color 3000 and (888) 377-6611 for the EPSON Stylus Pro 5000.

# EPSON PRODUCT SUPPORT BULLETIN

Date: 7/26/2001

PSB No.: PSB.2001.08.003

Reference: TE01-045 Rev. A

Originator: JD, RR, TC & MS

Authorization: *JS*

Affected Product(s): EPSON Pro Graphic Printers

Subject: Compatibility Chart for Macintosh OS X Classic

This bulletin provides information on compatibility for EPSON's Pro Graphic printers running in Macintosh OS X Classic mode. Mac OS X provides the Classic environment mode for Mac OS 9 compatible applications and device drivers. Classic mode will require Mac OS 9.1 system software. To setup Classic mode follow the steps below:

1. First install or upgrade your Macintosh system to OS 9.1 before installing OS X (for details refer to Apple's OS X documentation).
2. To start in Classic mode, click the **Classic** icon in System Preferences. To find *System Preferences* go to the **Apple Menu** or click on the icon in the **Dock** bar on the desktop. Classic mode can also be set up to start automatically during the log in process. (Refer to your Apple documentation for installation and operation of Macintosh OS X Classic and 9.1).
3. To run a Classic application, just double-click on it or a document created with the application.

**A) The following Epson models are supported in OS X Classic mode when using the connector type(s) described in the chart below.**

Model	Driver Version	Connector Type
Stylus Color 3000	5.69E	Ethernet I/F
Stylus Pro 5000	5.69E	Ethernet I/F
Stylus Pro 5500	6.61E	USB/Ethernet I/F
Stylus Pro 7000	6.63E	USB/Ethernet I/F
Stylus Pro 7500	6.73E	USB/Ethernet I/F
Stylus Pro 9000	6.30E	Ethernet I/F
Stylus Pro 9500	6.73E	Ethernet I/F
Stylus Pro 10000/10000CF	6.63E	USB/Ethernet I/F

**Note:**

1. **MAC OS X Classic mode supports USB-native and network-capable devices. Classic mode does not support MAC Serial, SCSI or FireWire connected devices.**
2. **Printers using a Fiery Rip Station for PostScript printing are not yet supported at this time.**
3. **Printers using Stylus Rip with Adobe PostScript drivers are not yet supported at this time.**

**B) The following models are not supported in OS X Classic when using the connector type(s) described in the chart below.**

Model	Connector Type
Stylus Color 3000	Serial/Parallel-to-USB adapter/FireWire (IEEE 1394)
Stylus Pro 5000	Serial/ Parallel-to-USB adapter/FireWire (IEEE 1394)
Stylus Pro 5500	FireWire (IEEE 1394)
Stylus Pro 7000	FireWire (IEEE-1394)
Stylus Pro 7500	FireWire (IEEE-1394)
Stylus Pro 9000	Serial/Parallel-to-USB adapter/FireWire (IEEE 1394)
Stylus Pro 9500	Serial/Parallel-to-USB adapter/FireWire (IEEE 1394)
Stylus Pro 10000/10000CF	FireWire (IEEE-1394)

# EPSON PRODUCT SUPPORT BULLETIN

**Date:** 6/26/01

**PSB No.:** PSB 2001.06.004

**Reference:** N/A

**Originator:** TC/RR

**Authorization:** 

**Affected Product(s):** SC3000, SP5000, SP5500, SP7000, SP7500, SP9000, SP9500, SP10000 DYE, and SP10000 ARC

**Subject:** Current Driver Location for C823722 EPSON IEEE 1394 (FireWire) Type B Interface Card for Windows 2000/Me/Macintosh Operating Systems

This bulletin provides information on where to find the most current driver for the EPSON C823722 - IEEE 1394 (FireWire) Type B Interface Card for the following EPSON Professional Graphics Inkjet Printers with appropriate Operating Systems: SC3000, SP5000, SP5500, SP7000, SP7500, SP9000, SP9500, SP10000DYE, and SP10000ARC.

1. Windows Requirements: The EPSON C823722 - IEEE 1394 (FireWire) Type B Interface Card only supports factory preinstalled full versions of Windows 2000 and Windows Me Operating Systems
2. Macintosh Requirements: The IEEE 1394 (FireWire) drivers for the Apple Macintosh Operating System (OS 8.6 with FireWire Update 2.1 or later required) are all ready built into the EPSON printer driver, and require no other driver files.

The driver CD that comes in the box with the EPSON C823722 - IEEE 1394 (FireWire) Type B Interface Card may contain older drivers than what is available on the CD that came with your EPSON Printer or from EPSON Internet Support Web Site. Prior to installing your printer, please refer to the **IEEE 1394 Reference Table** below for the location of the latest drivers for your specific EPSON printer and operating system. If the driver your need is listed as "Update on the Web" the most current driver can be found on the EPSON Internet Support Web Site at: <http://support.epson.com/filelibrary.html>

**IEEE 1394 Reference Table:**

Printer Models:	Windows 2000	Windows Me
EPSON Stylus COLOR 3000	Update on the Web	Update on the Web
EPSON Stylus PRO 5000	Update on the Web	Update on the Web
EPSON Stylus PRO 5500	Driver that came with printer	Driver that came with printer
EPSON Stylus PRO 7000	Update on the Web	Driver on CD-ROM that came with C823722 card
EPSON Stylus PRO 7500	Update on the Web	Driver on CD-ROM that came with C823722 card
EPSON Stylus PRO 9000	Update on the Web	Driver on CD-ROM that came with C823722 card
EPSON Stylus PRO 9500	Update on the Web	Driver on CD-ROM that came with C823722 card
EPSON Stylus PRO 10000	Driver that came with printer	Driver that came with printer
EPSON Stylus PRO 10000CF	Driver that came with printer	Driver that came with printer

# EPSON PRODUCT SUPPORT BULLETIN

**Date:** April 12, 2001

**IPSB No.:** PSB.2001.04.001

**Reference:** N/A

**Originator:** Mynor Saravia

**Authorization:**

**Affected Product(s):** Stylus Color 3000

**Subject:** Stylus Color 3000 Transportation Instructions

This document provides detail instructions on how to properly prepare your Stylus Color 3000 printer for transit. To avoid print head and ink spill damage to your Stylus Color 3000 printer when transporting or returning the printer to Epson for whole unit repair follow the instructions listed in this bulletin.

**When transporting your Stylus Color 3000 printer you will need to repack your printer in its original box. If the original box is not available, you may purchase a replacement box (P/N 3000BOXA) and corner block pads (P/N 3000BOXB) from you local Epson Customer Care Center.**

## Stylus Color 3000 Transit Instructions

1. To prepare your printer for transportation remove the paper from the tray/roll banner holder and all installed accessories, i.e. banner cutter, paper tray, roll paper holders, Ethernet card etc...
2. Turn the printer ON and make sure it comes to normal READY condition (The Operate and Media lights should be solid). If your printer does not come to READY or fails to power on then go to the next section on how to prepare a damaged printer for transit.
3. With the printer ON in the READY condition, begin removing the ink cartridges one by one until all of them have been removed. Store the ink cartridges in separate bags. Do not pack or return the ink cartridges with the printer.
4. Next, power the printer OFF. It should then take approximately 2 minutes for the printer to complete its transportation mode. During the transportation mode DO NOT unplug the printer. Wait until all the lights on the control panel are off then unplug the printer.
5. After the transportation mode is complete, ensure that the printheads are in the home position at the far right of the printer as shown in figure 1. If not, power the printer back on then wait until the printheads stop moving. After the print heads stop moving verify that they are at the home position, then turn the printer off.

Figure 1.



6. Raise the printer's top cover to expose the carriage bar area as shown in the figure 2. Crumple up newspaper pages into several balls and carefully start distributing these along the inside of the printer starting on the right hand side where the printheads are located. As you start moving towards the center of the printer gently push back the printhead cable and ink tubs against the back wall of the printer mechanism as shown in figure 2.

Figure 2.



7. Continue with this process until no more newspaper balls can be inserted inside the exposed carriage bar area as shown in figure 3. This is to insure that the printheads are securely locked in the home position area and will prevent the printer from sustaining any damage during the shipping process.

Figure 3.



8. Repack the printer in its original box if available. If not you can order a replacement box (P/N 3000BOXA) and corner block pads (P/N 3000BOXB) from you local Epson Customer Care Center.

## Transit Instructions for a Non-Functional Stylus Color 3000

If your Stylus Color 3000 printer does not come to READY or fails to power on you would need to contact EPSON Technical Support for packaging instructions and materials to properly package your printer for transit. Check your printer's warranty documentation for toll-free technical support contact information, or call: 562-276-1305 in the U.S. or 905-709-2567 in Canada during normal business hours. When you have received the appropriate packaging materials (4 transportation cartridges P/N 3000CARTASSY) from EPSON follow the instructions below to prepare your printer for transit.

1. To prepare your printer for transportation remove the paper from the tray/roll banner holder and all installed accessories, i.e. banner cutter, paper tray, roll paper holders, Ethernet card etc...
2. With the printer OFF remove the ink cartridges from the ink cartridge housing one by one until all of them have been removed. Insert the provided transportation cartridges in the cartridge housing of each appropriate color. Store the ink cartridges in separate bags. Do not pack or return the ink cartridges with the printer.
3. Next, to prevent the printer from sustaining any ink spill damage during the shipping process insure that the printheads are securely locked in the home position area. If not, then manually slide the printheads over to the far right side of the carriage bar as shown in figure 4.

Figure 4.



4. Raise the printer's top cover to expose the carriage bar area as shown in the figure 2. Crumple up newspaper pages into several balls and carefully start distributing these along the inside of the printer starting on the right hand side where the printheads are located. As you start moving towards the center of the printer gently push back the printhead cable and ink tubes against the back wall of the printer mechanism as shown in figure 5.

Figure 5.



5. Continue with this process until no more newspaper balls can be inserted inside the exposed carriage bar area as shown in figure 6. This is to insure that the printheads are securely locked in the home position area and will prevent the printer from sustaining any ink spill damage during the shipping process.

Figure 6.



6. Repack the printer in its original box if available. If not you can order a replacement box (P/N 3000BOXA) and corner block pads (P/N 3000BOXB) from you local Epson Customer Care Center.