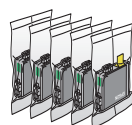
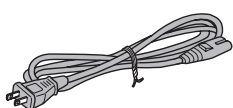
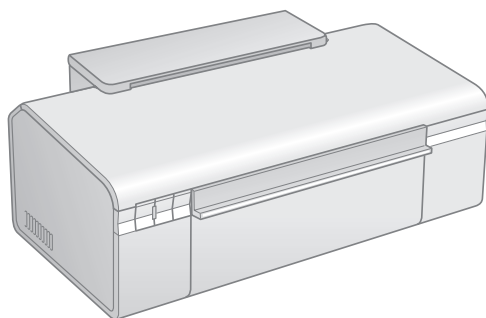


WORKFORCE™ 30 Series Start Here

Please read these instructions before using the printer.

1 Unpack

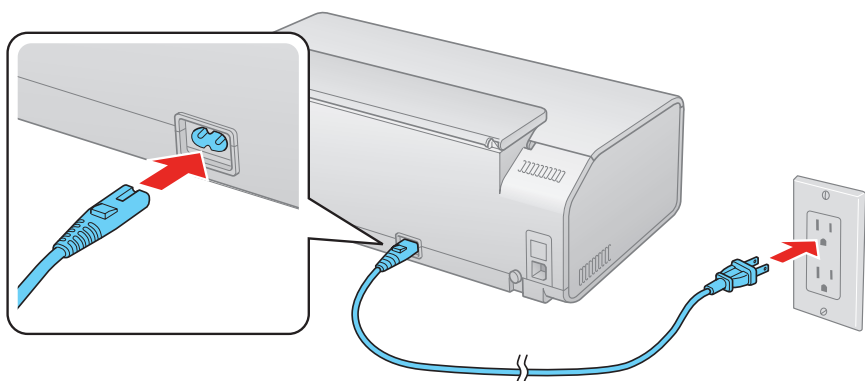


Caution: Do not open ink cartridge packages until you are ready to install the ink. Cartridges are vacuum packed to maintain reliability.

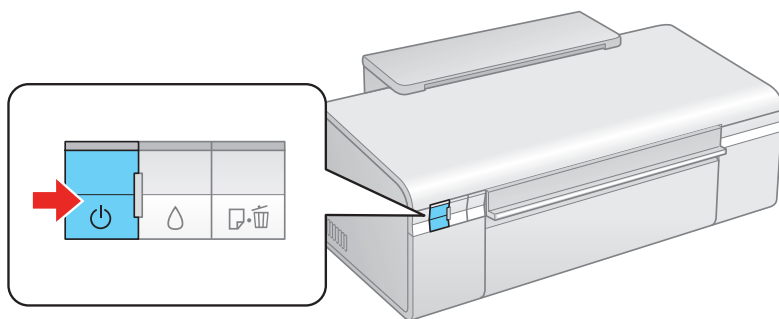
If anything is missing, contact Epson® as described on the back of this sheet.

2 Turn on the printer

1 Connect the power cable.



2 Press the  power button.



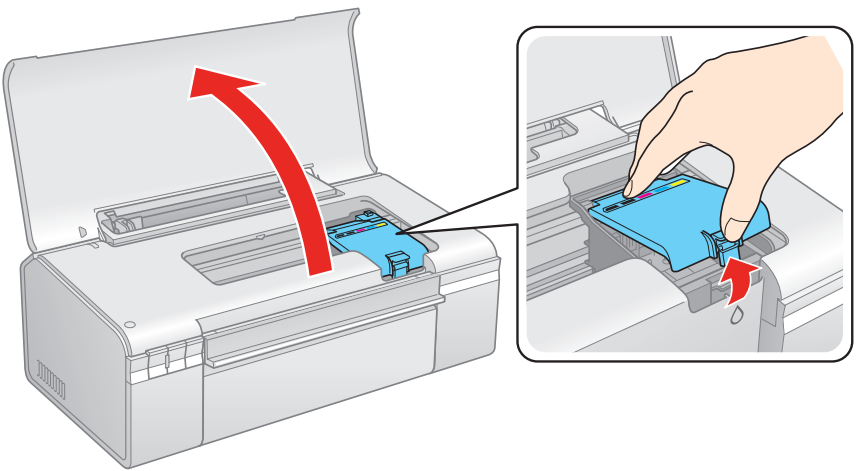
411343900

3

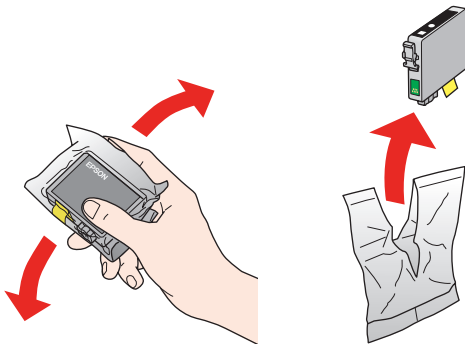
Install ink cartridges

Note: Don't load paper before installing the ink cartridges.

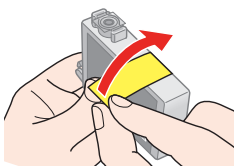
- 1 Lift up the printer cover.
- 2 Open the cartridge cover.



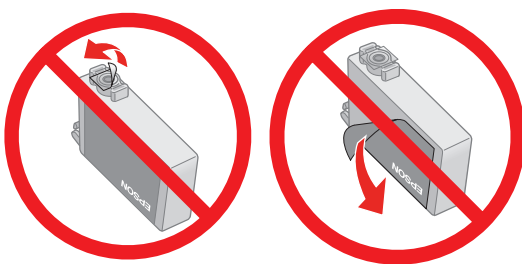
- 3 Shake the ink cartridges, then unpack them.



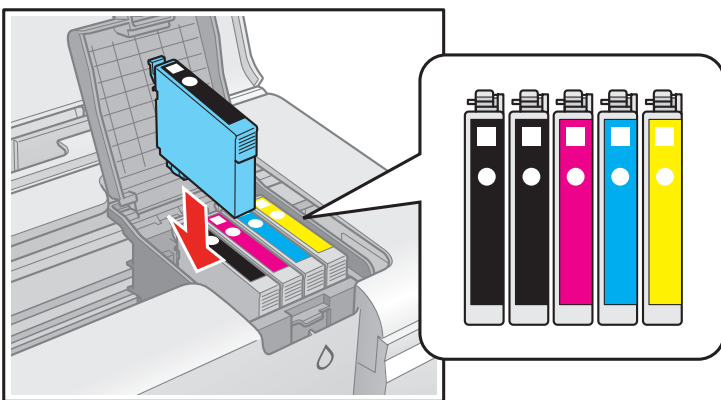
- 4 Remove only the yellow tape from each cartridge.



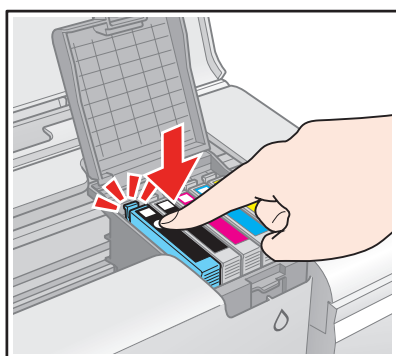
Caution: Don't remove any other seals from the cartridges.



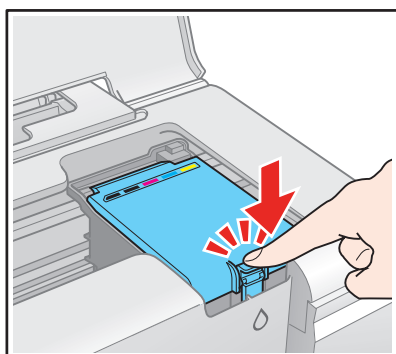
- 5 Insert the cartridges in the holder for each color.



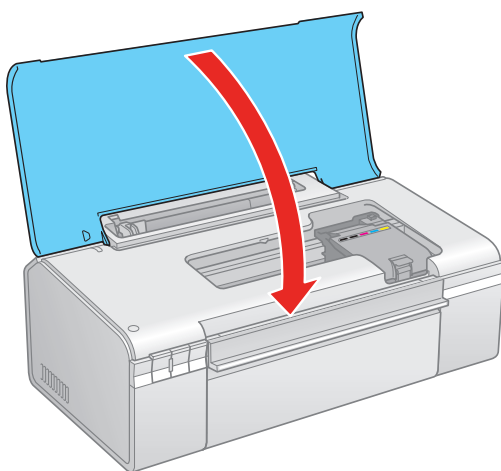
- 6** Press the cartridges down until they click.




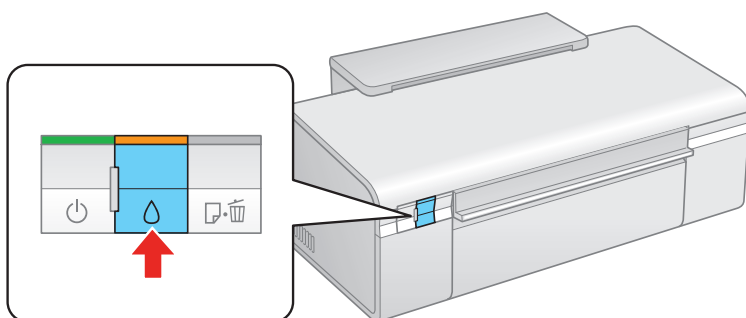
- 7** Close the ink cartridge cover and press it down until it clicks.




- 8** Close the printer cover.



- 9** Press the  ink button to charge ink. Charging takes about 2.5 minutes.

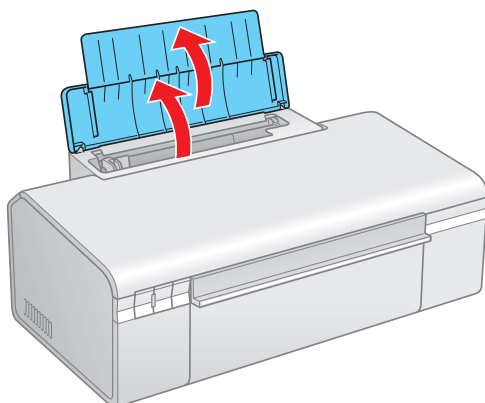


Caution: Don't turn off the printer while the  power light is flashing or you'll waste ink.

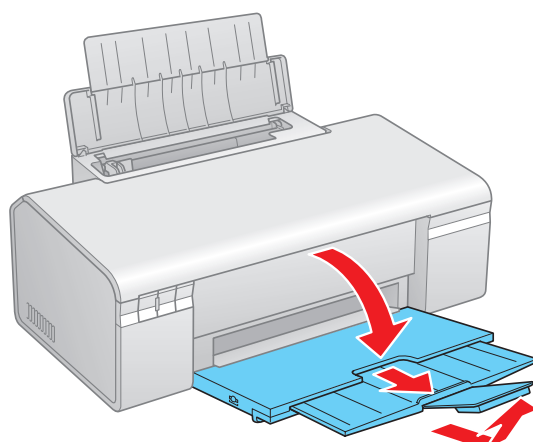
4

Load paper

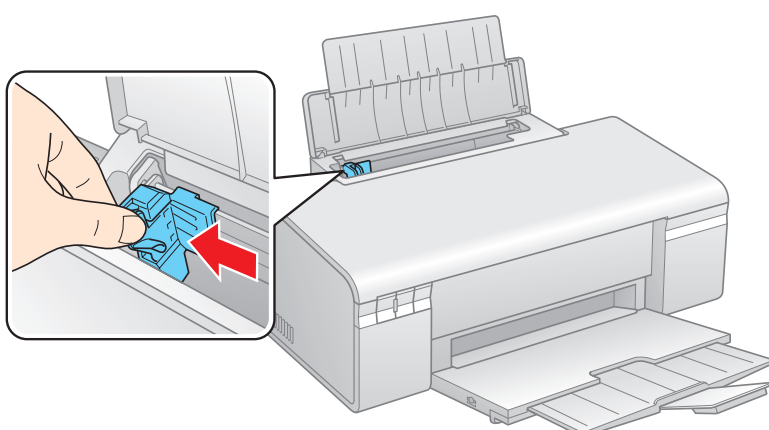
- 1** Open the paper support.



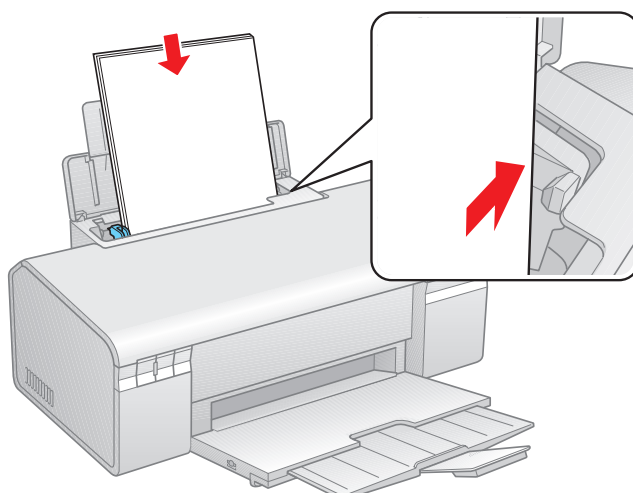
- 2** Open the output tray and pull out the extensions.



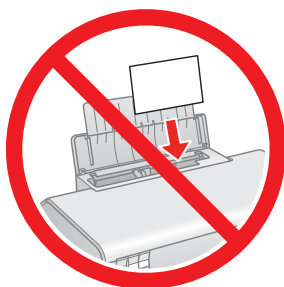
- 3** Squeeze the edge guide and slide it left.



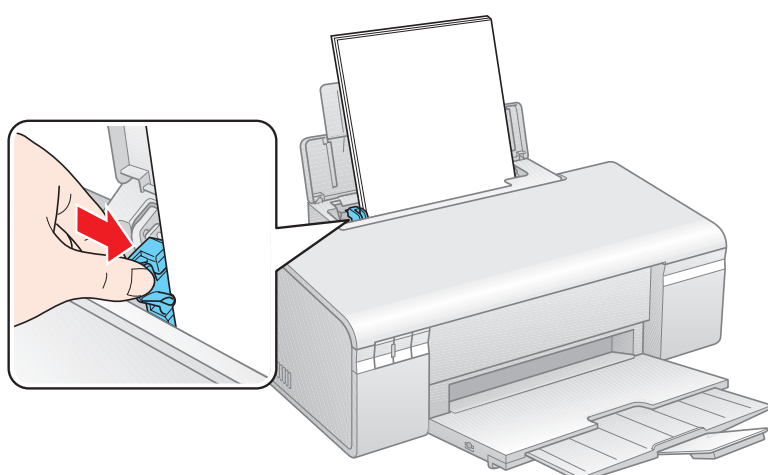
- 4** Load paper against the right edge guide and behind the tab, with the printable side face up.



Note: Don't load the paper sideways; always load it short edge first.



- 5** Slide the edge guide over.



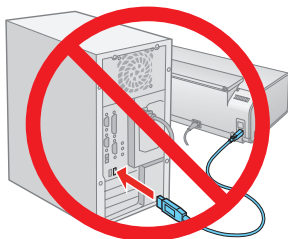
5

Install Software

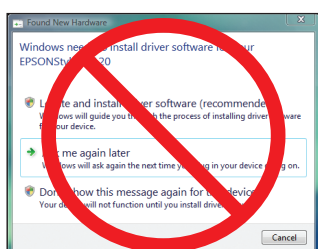
Your software works with Windows® 2000, XP, XP Professional x64 Edition, Windows Vista®, and [Mac OS® X 10.3.9, 10.4.x, and 10.5.x.](#)

Windows

- 1 Make sure the printer is **NOT CONNECTED** to your computer.

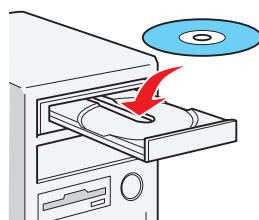


Note: If you see a Found New Hardware screen, click **Cancel** and disconnect the USB cable. You can't install your software that way.

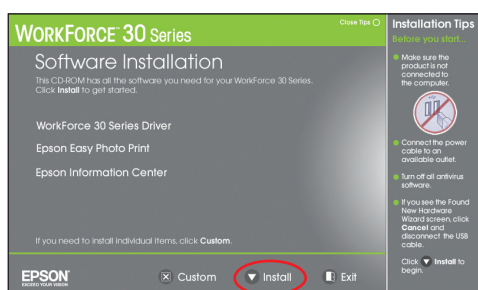


- 2 Insert the WorkForce 30 Series software CD.

With Windows Vista, if you see the AutoPlay window, click **Run EPSETUP.EXE**. When you see the User Account Control screen, click **Continue**.



- 3 Click **Install** and follow the on-screen instructions.

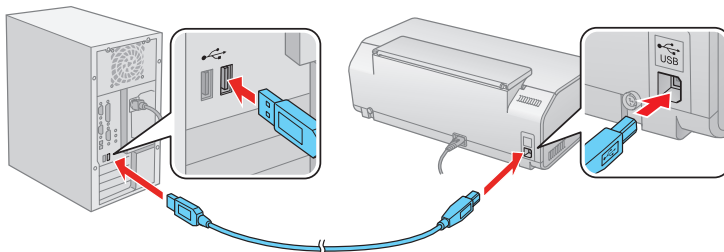


- 4 When you see this screen, click the first option and then click **Next**, *unless* the printer is connected to your computer through an external print server.

If you're using an external print server, click the second option, click **Next**, then skip to step 6.



- 5 When prompted, connect the USB cable. Use any open USB port on your computer.



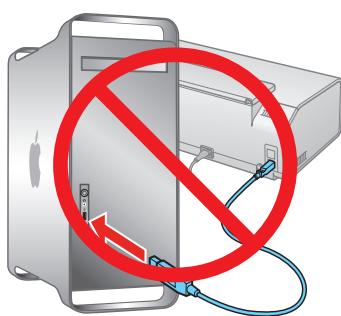
Note: If installation doesn't continue after a moment, make sure you securely connected and turned on the printer.

- 6 When you're done, remove the CD and restart your computer.

You're ready to print! See your *Quick Guide* or online *Epson Information Center* for instructions.

Macintosh®

- 1** Make sure the printer is **NOT CONNECTED** to your computer.



- 2** Insert the WorkForce 30 Series software CD.

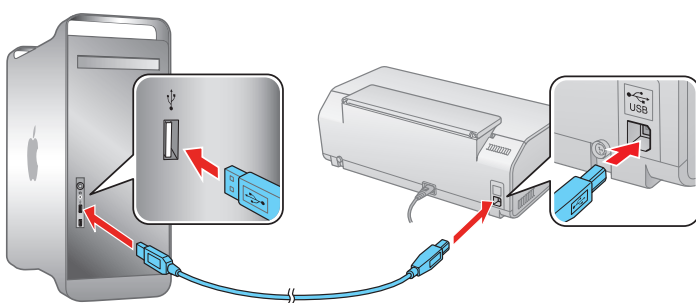


- 3** Double-click the **EPSON** Epson icon.

- 4** Click **Install** and follow the on-screen instructions.



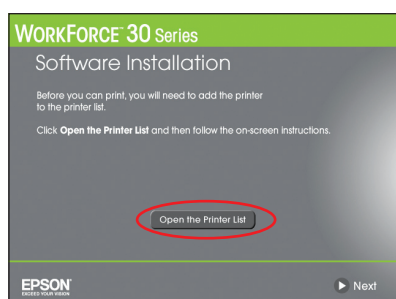
- 5** When prompted, connect the USB cable. Use any open USB port on your computer.



If you're using Mac OS X 10.5.x, skip to step 9.

If you're using Mac OS 10.3.9 or 10.4.x, continue with the next step.

- 6** When you see this screen, click **Open the Printer List**.



- 7** Follow the steps on the right side of the screen to add the printer.





- 8** Click **Next** again, if necessary.

- 9** When you're done, eject the CD.

You're ready to print! See your *Quick Guide* or online *Epson Information Center* for instructions.

Solving problems

The printer makes noise after ink cartridge installation.

- The first time you install ink cartridges, the printer must charge its print head for 2.5 minutes or so. Wait until charging finishes (the  power light stops flashing) before you turn off the printer, or it may charge improperly and use excess ink the next time you turn it on.
- If the printer stops moving or making noise, but the  power light is still flashing after 5 minutes, turn off the printer. If the light is still flashing when you turn it back on, contact Epson as described in “**Any Questions?**”.
- Turn off the printer, then make sure the ink cartridges are inserted completely and the ink cartridge cover is closed completely. Wait a moment, then turn the printer back on to clear the error.

You’re having problems installing the printer software.

- During software installation, you are prompted to connect the USB cable. When you connect the cable, make sure your printer is turned on and the cable is securely connected at both ends.
- Close your other programs, including any screen savers and virus protection software, and install the software again.

Any questions?

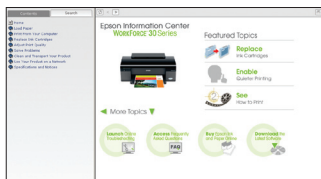
Quick Guide

Basic instructions for printing.



Online Epson Information Center

Click the desktop shortcut.



Note: You will need an Internet connection to view the *Epson Information Center*. If you can't find the desktop shortcut, you can also view the *Epson Information Center* at epson.com/support.

Online help with your software

Select **Help** or **?** when you're using your software.

Technical Support

Internet Support

Visit Epson's support website at epson.com/support and select your product for solutions to common problems. You can download drivers and documentation, get FAQs and troubleshooting advice, or e-mail Epson with your questions.

Speak to a Support Representative

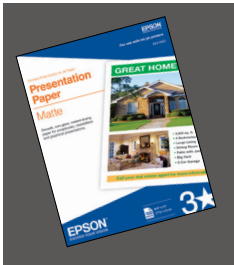
Call (562) 276-7202 (U.S.), 6 AM to 6 PM, Pacific Time, Monday through Friday, and 7 AM to 4 PM, Saturday, or (905) 709-2567 (Canada), 6 AM to 6 PM, Pacific Time, Monday through Friday. Days and hours of support are subject to change without notice. Toll or long distance charges may apply.

Need paper and ink?

Try Epson paper with DURABrite® Ultra Ink for professional results. For the right supplies at the right time, you can purchase them at Epson Supplies CentralSM at www.epson.com/ink3 (U.S. sales) or www.epson.ca (Canadian sales). You can also purchase supplies from an Epson authorized reseller. To find the nearest one, call 800-GO-EPSON (800-463-7766).

Genuine Epson Paper

Epson offers a wide variety of papers to meet your needs; visit Epson Supplies Central for more information.



Presentation Paper Matte

Ultra smooth, non-glare, instant-drying paper for scrapbooks, newsletters and graphical presentations.







Premium Photo Paper Glossy

High gloss, instant-drying paper for beautiful, durable photos made to share or display in an album.

Genuine Epson Inks







Look for the numbers below to find your cartridges. It's as easy as remembering your number!

Color	Standard Capacity	High Capacity
 Black	69	68
 Cyan	69	68
 Magenta	69	68
 Yellow	69	68

Note: The 68 High Capacity color ink cartridges are available only online; visit www.epson.com/highcapacity (U.S. sales) or www.epson.ca (Canadian sales).

Cut out the card to the right and keep it with you when purchasing replacement ink cartridges.

Epson WORKFORCE™ 30 Series Ink Cartridges

Color	Standard Capacity	High Capacity
 Black	69	68
 Cyan	69	68
 Magenta	69	68
 Yellow	69	68

The 68 High Capacity color ink cartridges are available only online; visit www.epson.com/highcapacity (U.S. sales) or www.epson.ca (Canadian sales).

