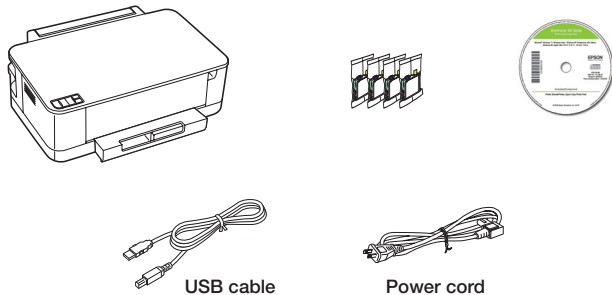


WorkForce® 60 Series Start Here

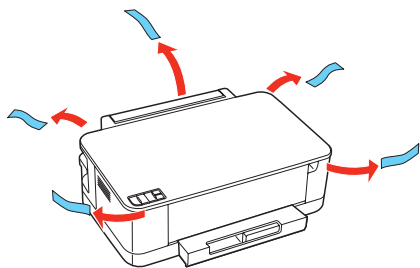
Read these instructions before using your product.

1 Unpack



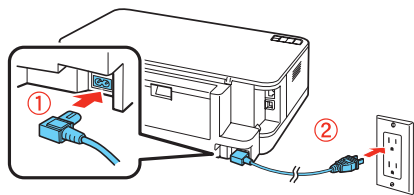
Caution: Do not open ink cartridge packages until you are ready to install the ink. Cartridges are vacuum packed to maintain reliability.

Remove all protective materials.



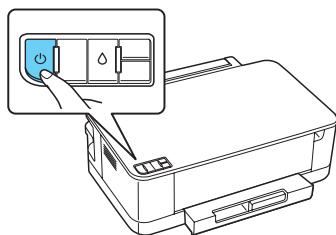
2 Turn on

- 1 Connect the power cable.



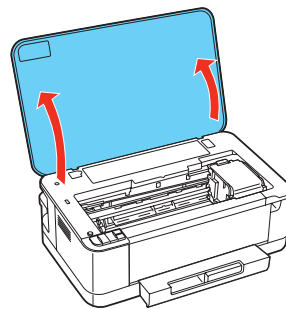
Caution: Do not connect to your computer yet.

- 2 Press the  **Power** button.

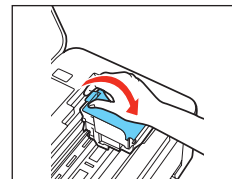


3 Install ink cartridges

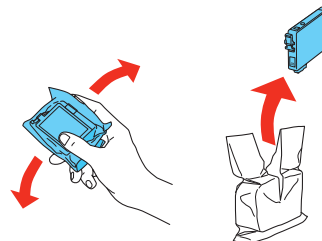
- 1 Lift up the printer cover.



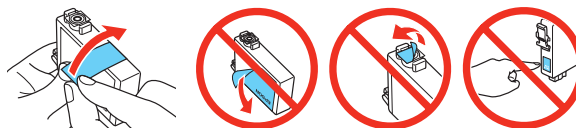
- 2 Open the cartridge cover.



- 3 Shake the ink cartridges gently 4 or 5 times, then unpack them.

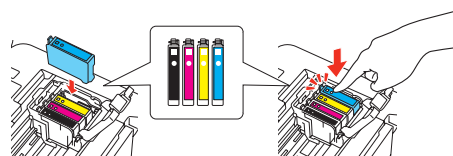


- 4 Remove only the yellow tape from each cartridge.

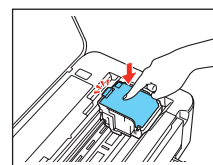


Caution: Don't remove any other seals or the cartridges may leak.


- 5 Insert the cartridges in the holder for each color. Press each cartridge down until it clicks.



- 6 Close the cartridge cover. Press down until it clicks.



- 7 Lower the printer cover.

- 8 Press the  **Ink** button to prime the ink delivery system. This takes several minutes.

Note: Your printer ships with full cartridges and part of the ink from the first cartridges is used for priming the printer.

Caution: Don't turn off the printer while it is priming or you'll waste ink.



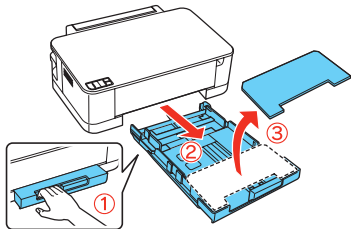
411961800

EPSON®
EXCEED YOUR VISION

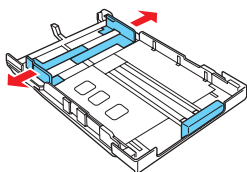
4 Load paper

You can load letter-, A4-, or legal-size paper, as well as 4 × 6-, 5 × 7-, or 8 × 10-inch photo paper. For instructions on loading legal-size paper, see the online *User's Guide*.

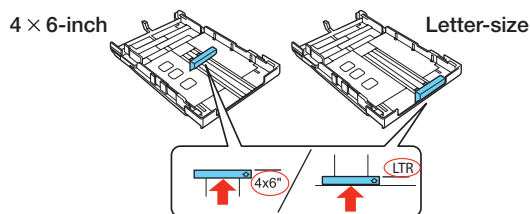
- 1 Pull out the paper cassette and lift off the paper cassette cover.



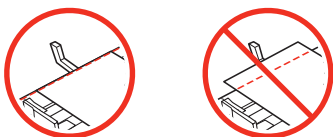
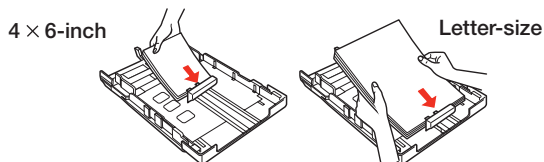
- 2 Slide the edge guides outward.



- 3 Position the guide shown below for the size of paper you're using.

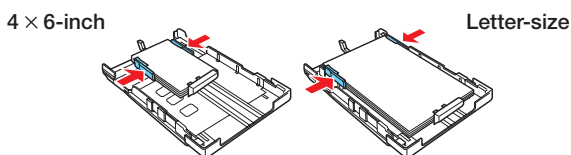


- 4 Insert the paper with the glossy or printable side face-down.

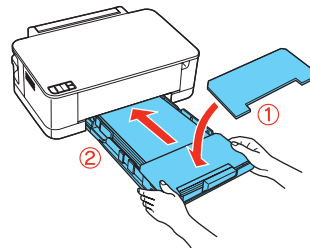


Note: Make sure the paper is loaded against the edge guide and not sticking out from the end of the cassette.

- 5 Slide the edge guides against the paper, but not too tight. Make sure the paper is under the tabs on the edge guides.

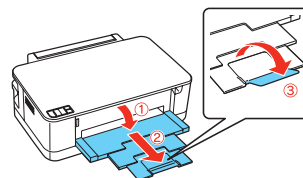


- 6 Replace the paper cassette cover, then gently insert the paper cassette.



Note: The paper may slide forward slightly as you insert the cassette. This is normal.

- 7 Extend the output tray as shown.



5 Choose your connection

You can connect your printer to your existing network (wireless or wired) or directly to your computer using a USB cable. See below for details on each connection method.

Wireless Connection

You must install the software on every computer from which you want to print. For the first installation, we recommend using a USB cable to simplify wireless setup. After the printer is connected to the network, you will be prompted to remove the cable.

Make sure you know your network name (SSID) and network password:

- Network name _____
- Network password _____

If you don't have this information, contact the person who set up your network.

Direct USB Connection

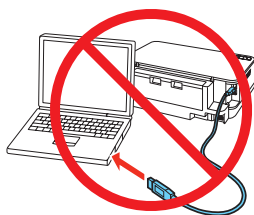
Make sure you have a USB cable. Do not connect the printer to your computer until you're instructed to do so.

Wired Ethernet® Connection

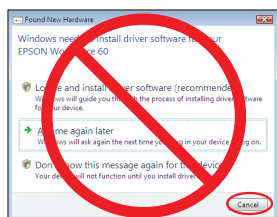
Make sure you have an Ethernet network cable (not included). You must install the software on every computer from which you want to print.

6 Install software

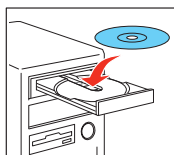
- 1 Make sure the printer is **NOT CONNECTED** to your computer.



Windows®: If you see a Found New Hardware screen, click **Cancel** and disconnect the USB cable. You can't install your software that way.



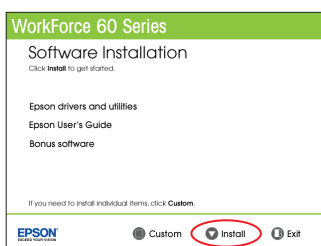
- 2 Insert your product CD.



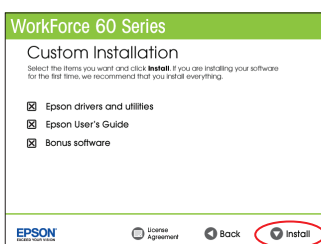
Windows: If you see the AutoPlay window, click **Run Setup.exe**. If you see the User Account Control screen, click **Yes** or **Continue**.

Macintosh®: Double-click the  **Epson** icon.

- 3 **Windows:** Click **Install** and follow the on-screen instructions.



Macintosh: Select the items you want to install. Then click **Install**.



Any questions?

On-screen help with your software

Select **Help** or **?** when you're using your software.

User's Guide

Click the desktop shortcut to access the online *User's Guide*, software downloads, Epson Supplies CentralSM, and more (requires an Internet connection).



Epson Technical Support

Visit epson.com/support (U.S.) or epson.ca/support (Canada) where you can download drivers, view manuals, get FAQs, or e-mail Epson.

You may also speak with a support specialist by calling:



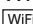

- U.S.: (562) 276-7202, 6 AM to 8 PM, Pacific Time, Monday through Friday, and 7 AM to 4 PM Saturday
- Canada: (905) 709-2567, 6 AM to 6 PM, Pacific Time, Monday through Friday

Days and hours of support are subject to change without notice. Toll or long distance charges may apply.

Any problems?

If you experience problems during setup, see below:

Network setup was unsuccessful.

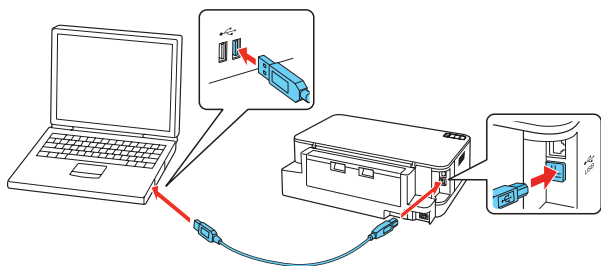
- Make sure you select the right network name.
- If you see a firewall alert message, click **Unblock** or **Allow** to let setup continue.
- If your network has security enabled, make sure you enter your network password (WEP key or WPA passphrase) correctly. If it has uppercase (**ABC**) or lowercase (**abc**) letters, make sure you enter them correctly.
- Try moving the product to a different location. Avoid placing it next to a microwave oven, 2.4 GHz cordless phone, or large metal object such as a filing cabinet.
- If your wireless router doesn't broadcast its network name (SSID), manually enter your wireless network name. Make sure there aren't any access restrictions (such as MAC address filtering) set on the wireless router. If access restrictions are set, register the product's MAC address on the router. Print a Network Status Sheet (see below) to obtain the MAC address. Then see your router's manual for instructions.
- Print a Network Status Sheet to see what network settings are currently enabled in the printer. Press the Network Information  button to print a network status sheet.
- Remove and reinsert the CD to reinstall your product software.
- If you're using the  WiFi button to connect to your WPS-compatible wireless router, make sure you press the  WiFi button on your printer and the  WPS button on your router within 2 minutes of each other.

The product's WiFi light is on but you cannot print.

Your router might not be assigning IP addresses automatically using DHCP. If it isn't, you will need to set the product's IP address manually. Make sure it is set correctly for your network.

Setup is unable to find my printer after connecting it with a USB cable.

Make sure it is securely connected as shown:



Printing Problems

- Make sure the size of paper you loaded matches the paper size selected in your printer software.
- Printing stops when an ink cartridge is expended. If a color cartridge is expended, you may be able to continue printing temporarily with black ink; see the online *User's Guide* for more information. If the black cartridge is expended, you must replace it to continue printing.

Paper Feeding Problems

If paper doesn't feed correctly, remove the paper and fan the sheets, then reload them. Don't load paper above the tabs on the edge guides.

Print Quality Problems

- Make sure your paper is loaded printable side down (usually the whiter, brighter, or glossy side).
- For the best print quality, use Epson papers and genuine Epson ink cartridges.
- Make sure the type of paper you loaded matches the paper type setting on the control panel or in your printer software. See the online *User's Guide* for more information.
- If you notice light or dark bands across your printouts or they are too faint, run a nozzle check to see if the print head needs cleaning. See the online *User's Guide* for more information.
- If you notice jagged vertical lines, you may need to align the print head. See the online *User's Guide* for instructions.
- The ink cartridges may be low on ink. Check your cartridge levels and replace cartridges, if necessary. See the online *User's Guide* for more information.

Need paper and ink?

Try Epson paper with DURABrite® Ultra Ink for professional results. For the right supplies at the right time, you can purchase them at Epson Supplies Central at www.epson.com/ink3 (U.S. sales) or www.epson.ca (Canadian sales). You can also purchase supplies from an Epson authorized reseller. To find the nearest one, call 800-GO-EPSON (800-463-7766).

DESIGNED *for*
EXCELLENCE™

Epson printers, ink and specialty papers.

Genuine Epson Paper

Epson offers a wide variety of papers to meet your needs; visit Epson Supplies Central for more information.



Presentation Paper Matte

Smooth, non-glare, instant-drying paper for scrapbooks, newsletters, and graphical presentations.

Genuine Epson Inks



Look for the numbers below to find your cartridges. It's as easy as remembering your number!



WorkForce 60 Series Ink Cartridges

| Color | High-capacity | Extra High-capacity |
|---------|---------------|---------------------|
| Black | 126 | 127 |
| Cyan | 126 | 127 |
| Magenta | 126 | 127 |
| Yellow | 126 | 127 |

Epson is a registered trademark, Epson Exceed Your Vision is a registered logomark, and Supplies Central is a service mark of Seiko Epson Corporation. WorkForce and DURABrite are registered trademarks, and Designed for Excellence is a trademark of Epson America, Inc.

General Notice: Other product names used herein are for identification purposes only and may be trademarks of their respective owners. Epson disclaims any and all rights in those marks.

This information is subject to change without notice.

© 2010 Epson America, Inc. 9/10

CPD-28179

Printed in XXXXXX