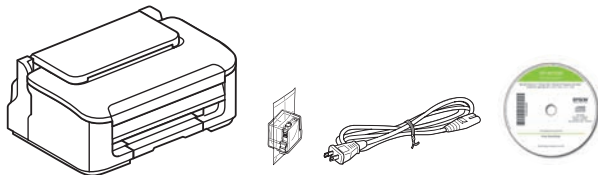


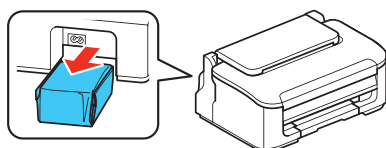
# WF-M1030 Start Here

Read these instructions before using your product.

## 1 Unpack

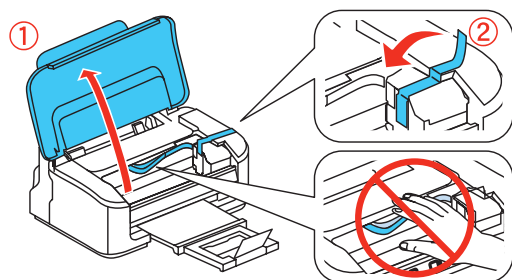


**Note:** Remove the ink cartridge package from the back of the printer.



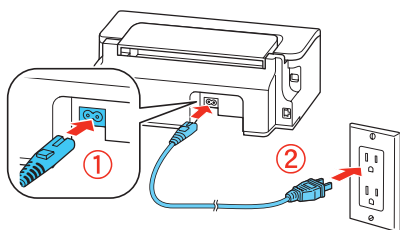
**Caution:** Do not open the ink cartridge package until you are ready to install the ink. The cartridge is vacuum packed to maintain reliability.

Remove all protective materials, including from inside the printer.



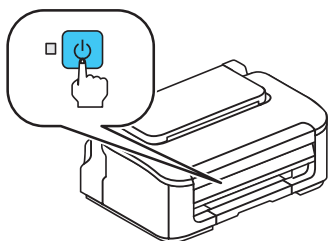
## 2 Turn on

- 1 Connect the power cord to the back of the printer and to an electrical outlet.



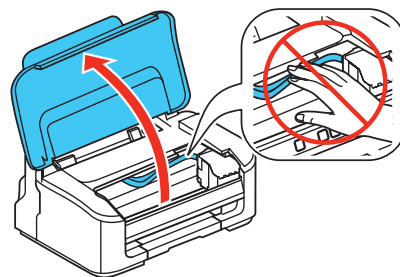
**Caution:** Do not connect to your computer yet.

- 2 Press the  power button.

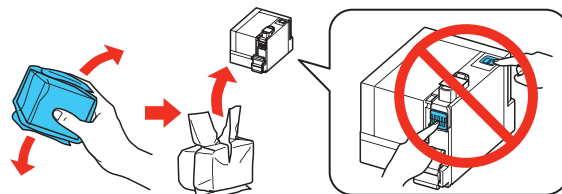


## 3 Install ink cartridge

- 1 Lift up the printer cover.

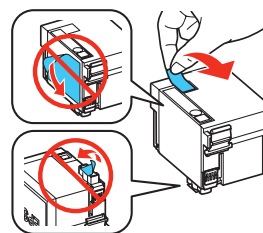


- 2 Shake the ink cartridge gently 4 or 5 times, then unpack it.



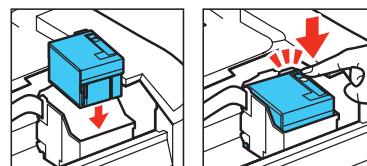
**Caution:** Don't touch the green chip or small window on the cartridge.

- 3 Remove only the yellow tape from the cartridge.

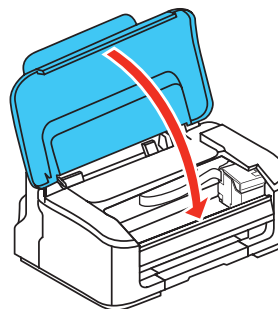




**Caution:** Don't remove any other seals or the cartridge may leak.

- 4 Insert the cartridge in the holder, and press it down until it clicks.



- 5 Lower the printer cover.



- 6 Press the  button to prime the ink delivery system. This takes about 5 minutes. When the green  power light stops flashing, priming is complete.

**Note:** The cartridge included with the printer is designed for printer set up and not for resale. After some ink is used for priming, the rest is available for printing.

**Caution:** Don't turn off the printer or load paper while the printer is priming or you'll waste ink.

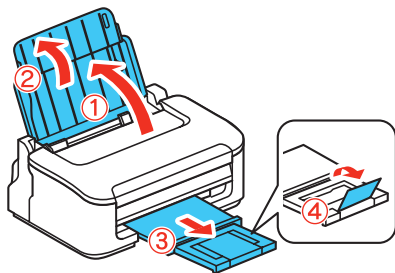


\*412491700\*

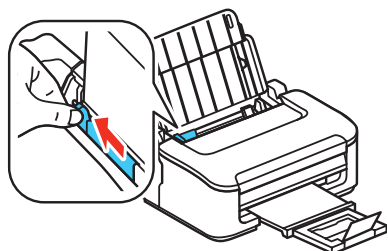
**EPSON**  
EXCEED YOUR VISION

## 4 Load paper

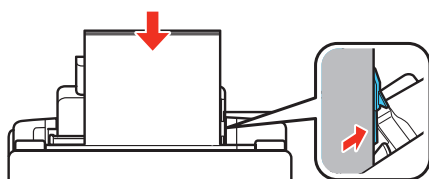
- 1 Raise the paper support, pull out the output tray, then raise the paper stopper.



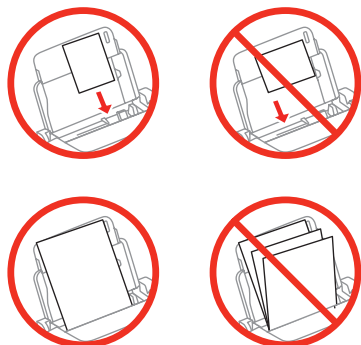
- 2 Slide the edge guide to the left.



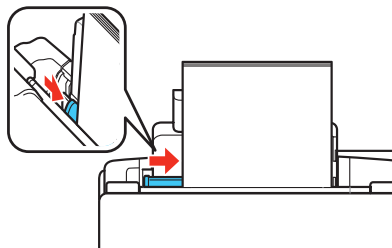
- 3 Load paper against the right edge guide and behind the tab line on the left edge guide, with the printable side faceup.



**Caution:** Don't load the paper sideways; always load it short edge first.



- 4 Slide the edge guide against the left edge of the paper, but not too tightly.

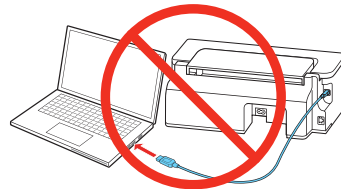


## 5 Install software

**Note:** If your computer does not have a CD/DVD drive, you can download the software from the Epson website (see "Epson technical support").

**Caution:** Be sure to close your other programs, including any screen savers and virus protection software, before beginning this software installation.

- 1 Make sure the printer is **NOT CONNECTED** to your computer.



**Windows®:** If you see a Found New Hardware screen, click **Cancel** and disconnect the USB cable. You can't install your software that way.

- 2 Insert the product CD.

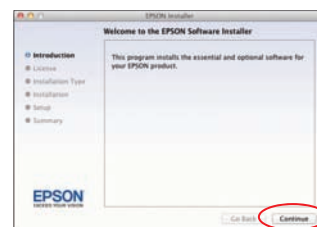
- 3 **Windows 8:** Click the CD/DVD drive message that appears on your computer screen. Then select **Run Setup.exe**. If you don't see this option, navigate to your CD/DVD drive and double-click **Setup**.

**Windows (other versions):** If you see the AutoPlay window, click **Run Setup.exe**.

**Mac OS X:** Double-click the  **EPSON** icon.

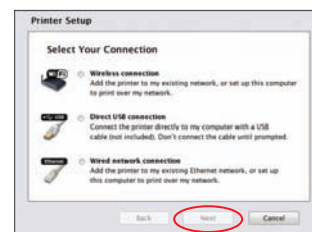
- 4 **Windows:** If you see the User Account Control screen, click **Yes** or **Continue**.

- 5 Click **Install** (Windows) or **Continue** (Mac OS X) and follow the instructions on your computer screen.



- 6 When you see the screen below, check the "Connection options" section on the back of this sheet for more information.

Choose your connection. Then click **Next** (Windows) or **Continue** (Mac OS X) and follow the instructions on your computer screen.



# Connection options

## Wireless connection

You must install the software on every computer from which you want to print. The installer may prompt you to connect the printer to your computer with a USB cable temporarily. After the printer is connected to the network, you will be prompted to remove the cable (USB cable not included).

Make sure you know your network name (SSID) and network password:

- Network name \_\_\_\_\_
- Network password \_\_\_\_\_

If you don't have this information, contact the person who set up your network.

If your router or access point supports Wi-Fi Protected Setup (WPS), you can connect the printer by pressing the WPS button on your router, then pressing the **Wi-Fi** button on your printer.

To view how-to-videos on setting up your printer's wireless connection, go to [epson.com/support](http://epson.com/support) (U.S.) or [epson.ca/support](http://epson.ca/support) (Canada).

## Direct USB connection

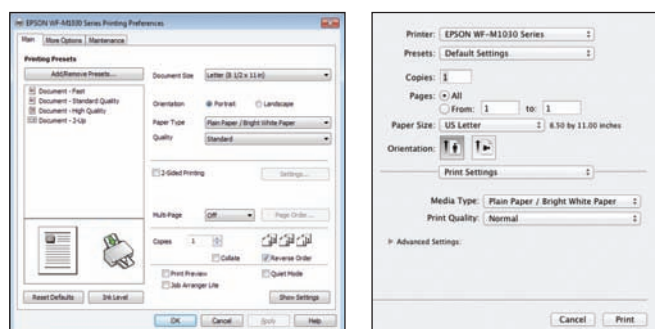
Make sure you have a USB cable. Do not connect the printer to your computer until you're instructed to do so.

## Wired network connection

Make sure you have an Ethernet® cable (not included). You must install the software on every computer from which you want to print.

# Printing from a computer

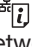

- 1 Open your document or photo.
- 2 Select the print option in your application.
- 3 Select your EPSON printer.
- 4 In Windows, select **Preferences** or **Properties**.
- 5 Choose your printer settings. (In Windows, click **OK** when you're done.)



- 6 Click **OK** or **Print** to start printing.

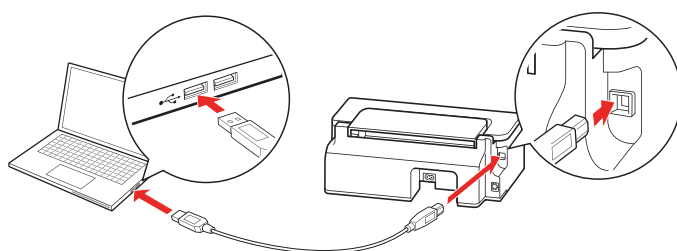
# Any problems?

## Network setup problems

- If you're connecting the printer via Wi-Fi Protected Setup (WPS), make sure you press the **Wi-Fi** button on the printer within 2 minutes of pressing the WPS button on your router. The **Wi-Fi** button on the printer must be pressed for 3 seconds.
- Try connecting to the router or access point with your computer or another device to confirm that it is working correctly.
- Press the  button to print a network status sheet. Verify that the network settings are correct and check the signal strength. If it's weak, try moving the printer closer to your router or access point. Avoid placing the printer next to a microwave oven, 2.4 GHz cordless phone, or large metal objects such as a filing cabinet.
- When using TCP/IP, make sure the printer's IP address is set correctly for your network. If your network does not assign IP addresses using DHCP, you need to set the IP address manually.
- Check to see if access restrictions, such as MAC address filtering, are set on the router or access point. If access restrictions are set, add your printer's MAC address to your router's address list. To obtain your printer's MAC address, press the  button to print a network status sheet. Then follow the instructions in your router or access point documentation to add the address to the list.
- Disable the firewall temporarily to see if that may be causing the issue. Contact your firewall manufacturer for assistance.

## Setup is unable to find my printer after connecting it with a USB cable.

Make sure it is securely connected as shown:














## Print quality problems

- Make sure your paper is loaded printable side up (usually the whiter, brighter, or glossy side).
- If you notice light or dark bands across your printouts or they are too faint, run a nozzle check to see if the print head needs cleaning. See the online *User's Guide* for more information.

Error indicators

If you see one of the error indicators below, follow the steps here to proceed:

- ■ On     Flashing slowly     Flashing fast


	Paper is out or multiple sheets have fed at the same time. Load paper correctly and press the  button.
	Paper is jammed. Cancel the print job if necessary, remove the jammed paper, then press the  button.
	The ink cartridge is expended, not installed correctly, or cannot be used with the product. Replace or reinstall the ink cartridge.
	The ink cartridge is running low on ink. If the cartridge is expended, you will need to replace it to continue printing.
 Flashing alternately	The ink pads are near or at the end of their service life. Contact Epson for support. If the pads are near the end of their service life, you can resume printing by pressing the  button.
	Printer error. Turn the printer off, check inside for jammed paper or foreign objects, then turn the printer back on. If the error does not clear, contact Epson.
	Firmware update error. Contact Epson.

Any questions?

On-screen help with your software

Select **Help** or **?** when you're using your software.

User's Guide

Click the  icon on your desktop (or in the **Applications/ Epson Software/Guide** folder in Mac OS X) to access the online *User's Guide*, how-to-videos, software downloads, EPSON® Supplies Central®, and more (requires an Internet connection). If you don't have a User's Guide icon, you can install it from the CD or go to the Epson website, as described below.

Epson technical support

Visit **epson.com/support** (U.S.) or **epson.ca/support** (Canada) where you can download drivers, view manuals and how-to-videos, get FAQs, or e-mail Epson.

You may also speak with a support specialist by calling (562) 276-7202 (U.S.) or (905) 709-2567 (Canada), 6 AM to 8 PM, Pacific Time, Monday through Friday, and 7 AM to 4 PM, Pacific Time, Saturday.

Days and hours of support are subject to change without notice. Toll or long distance charges may apply.

Recycling

Epson offers a recycling program for end of life products. Please go to **www.epson.com/recycle** for information on how to return your products for proper disposal.

Need paper and ink?

Try EPSON specialty papers with DURABrite® Ultra Ink for professional results. For the right supplies at the right time, you can purchase them at EPSON Supplies Central at **www.epson.com/ink3** (U.S. sales) or **www.epson.ca** (Canadian sales). You can also purchase supplies from an EPSON authorized reseller. To find the nearest one, call 800-GO-EPSON (800-463-7766).



Genuine EPSON paper

Epson offers a wide variety of papers to meet your needs; visit EPSON Supplies Central for more information.




**Presentation Paper Matte**  
Smooth, non-glare, instant-drying paper for home, school, and business projects.

Genuine EPSON inks

Look for the numbers below to find your cartridges. It's as easy as remembering your number!



WF-M1030 replacement ink cartridges

Color	Standard-capacity	High-capacity
 Black	223	223XL



EPSON, Supplies Central, and DURABrite are registered trademarks, and EPSON Exceed Your Vision is a registered logomark of Seiko Epson Corporation. Designed for Excellence is a trademark of Epson America, Inc.

General Notice: Other product names used herein are for identification purposes only and may be trademarks of their respective owners. Epson disclaims any and all rights in those marks. This information is subject to change without notice.