

# Quick Setup

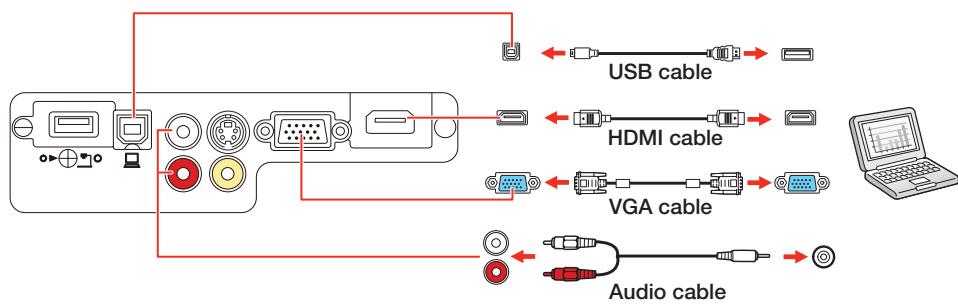
Before using the projector, make sure you read the safety instructions in the online *User's Guide*.

**Note:** The PowerLite W15+ has USB-A, USB-B, and Computer ports only. Refer to the applicable sections below when connecting the projector.

## Connect the projector

Choose from the following connections. See the sections below or the online *User's Guide* for details.

### Computer



### USB port

Connect the square end of a USB cable to the projector's **USB-B** (square) port. Connect the flat end of the cable to any USB port on your computer.

**Windows® XP or later:** After turning on the projector, follow the on-screen instructions to install the Epson® USB Display software (**EMP\_UDSE.EXE**; only on first connection). If the software screen does not display automatically, open **My Computer** or **Computer**, then double-click **EPSON\_PJ\_UD**.

**Mac OS X 10.5.8 or higher:** After turning on the projector, the setup folder for USB Display appears in the Finder. Double-click **USB Display Installer** and follow the on-screen instructions to install the Epson USB Display software (only on first connection).

**Note:** If you have problems installing the USB Display software, make sure the **USB Type B** setting in the projector's **Extended** menu is set to **USB Display**. See the online *User's Guide* for instructions.

### Computer port

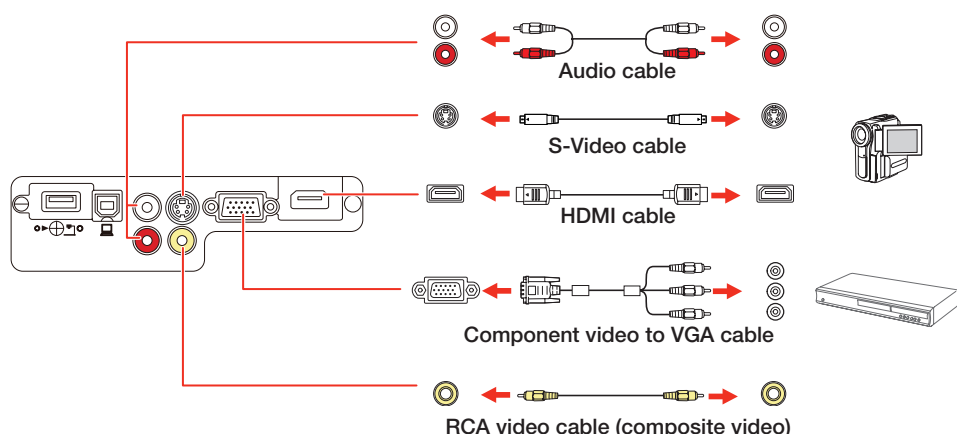
Connect one end of a VGA cable to the projector's **Computer** port, and the other end to your computer's monitor port. If you are using a laptop, switch it to external display (see "Troubleshooting"). You can also connect an audio cable.

### HDMI port

Connect one end of an HDMI cable to the projector's **HDMI** port and the other end to an HDMI port on your computer.

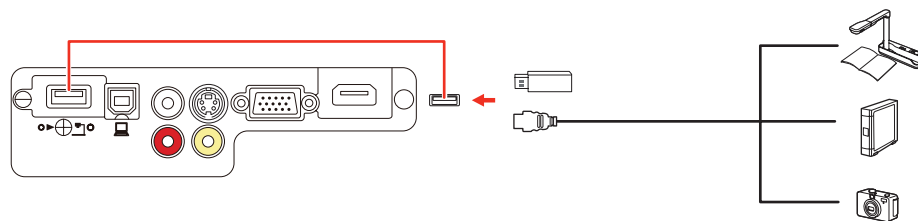
### Video device

Connect up to 4 video devices and use the remote control to switch between them.



### Camera, USB device, or Epson DC-06 document camera

Connect a digital camera, USB flash drive, USB storage device, or Epson DC-06 document camera to the projector's **USB-A** (flat) port.

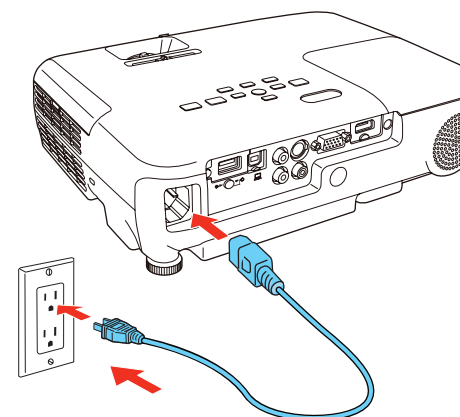


If you connect a digital camera, USB flash drive, or USB storage device, you can use the projector's PC Free feature. See the online *User's Guide* for details.

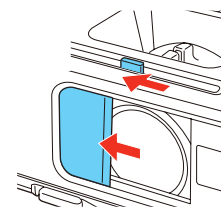
## Turn on your equipment

**1** Turn on your computer or video source.

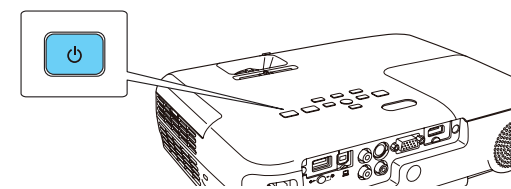
**2** Plug in the projector. The power light on the projector turns blue.



**3** Open the **A/V Mute** slide all the way.



**4** Press the power button. The projector beeps, the **Status** light flashes blue, and then stays on.



**Note:** To shut down the projector, press the power button twice, then unplug it. You don't have to wait for the projector to cool down.

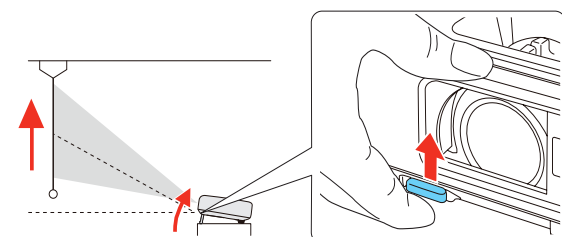
**5** The default language of the menu system is **English**. To select another language, press the **Menu** button on the projector. Select **Extended** and press **Enter**. Select **Language** and press **Enter**. Select your language and press **Enter**. Press the **Menu** button to exit the menu system.

## Adjust the image

**1** If you don't see an image, press the **Source Search** button on the projector or remote control to select the image source.

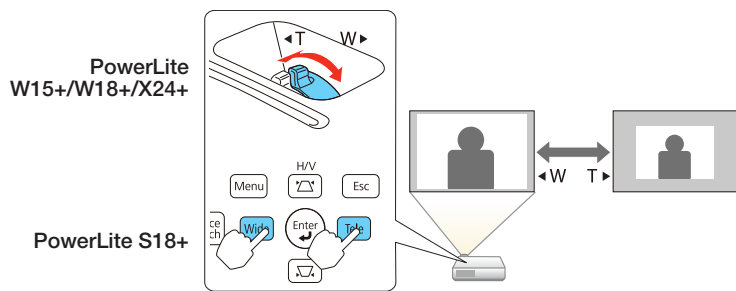
**Note:** If you still see a blank screen or have other display problems, see the troubleshooting tips on the back of this sheet.

**2** To raise the image, press the foot release button and lift the front of the projector. Release the button to lock the foot in position.

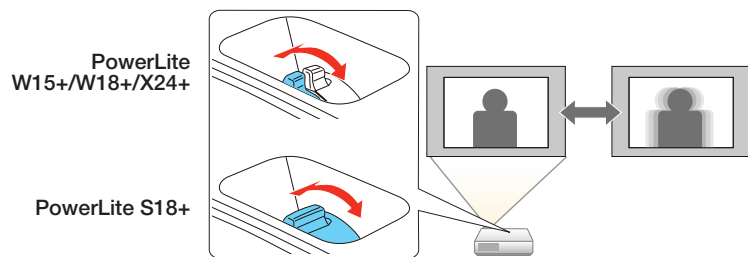


**3 PowerLite W15+/W18+/X24+:** To reduce or enlarge the image, turn the zoom ring.

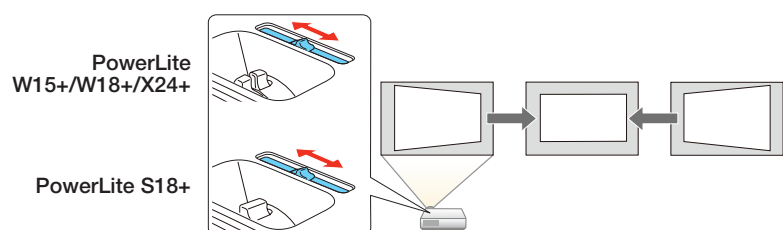
**PowerLite S18+:** To reduce or enlarge the image, press the **Tele** (reduce) or **Wide** (enlarge) buttons on the projector.



**4** Turn the focus ring to sharpen the image.



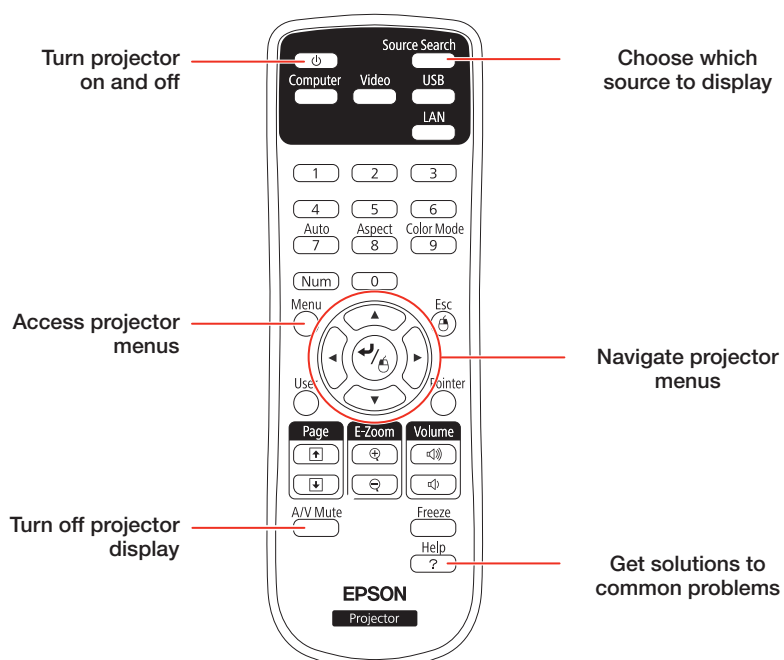
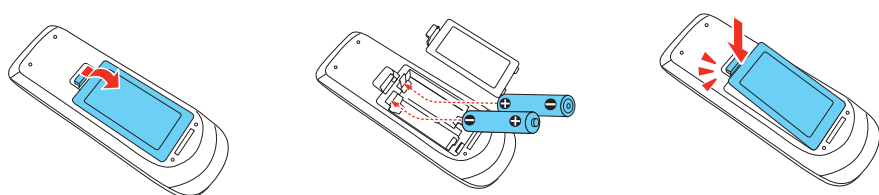
**5** If your image looks like or , you may have placed the projector off to one side of the screen at an angle. Place the projector directly in front of the center of the screen, facing the screen squarely. If you can't move the projector, use the horizontal slider on the projector to correct the image.



**6** Your projector automatically adjusts images that look like or , but if necessary you can press the or button on the projector to correct it.

## Using the remote control

Make sure the batteries are installed as shown (two AA batteries).



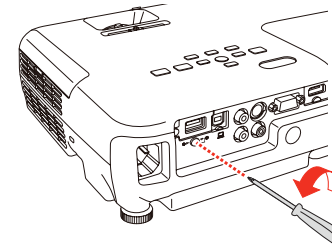
For more information on using the remote control, see the online *User's Guide*.

## Project wirelessly

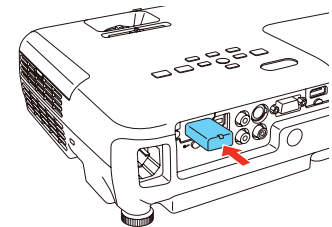
Follow the steps here to connect the projector wirelessly over an 802.11n, 802.11g, or 802.11b wireless network. With the PowerLite S18+, you will need the optional wireless LAN module (part number V12H418P12).

If you're projecting from a computer, it must have a wireless card or built-in wireless interface, and be running Windows 8, Windows 7, Windows Vista®, Windows XP Professional x64, or Windows XP, or Mac OS X 10.4.11 to 10.8.x.

**1** Remove the wireless LAN module cover screw.



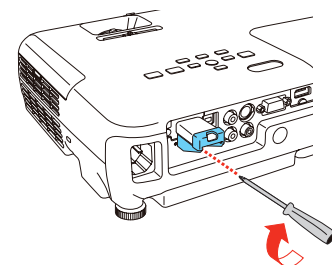
**2** Connect the wireless LAN module to the projector's **USB-A** (flat) port.



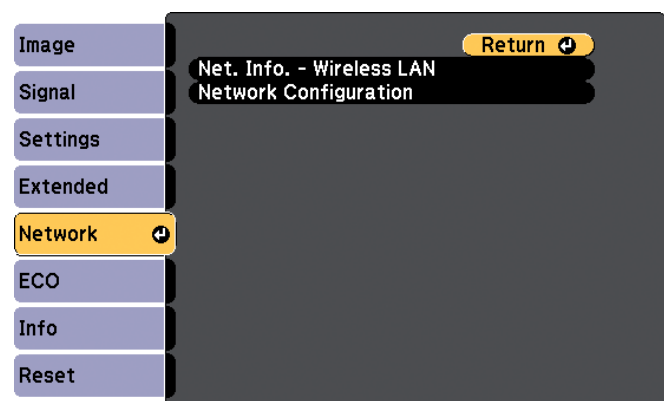
**3** To configure your projector for your wireless network, do one of the following:

- If you're using the optional Quick Wireless Connection USB key (Windows only, part number V12H005M09), press the **LAN** button on the remote control. When you see SSID and IP address information on the screen, remove the wireless LAN module and connect the key to the projector's **USB-A** port. Look for the displayed message, remove the key, and connect it to a USB port on your computer. Follow the on-screen instructions to install the driver, then run your presentation. For details, see the online *User's Guide*.
- If you're not using the key, continue with the steps below.

**4** Attach the wireless LAN module cover and secure it using the screw you removed.

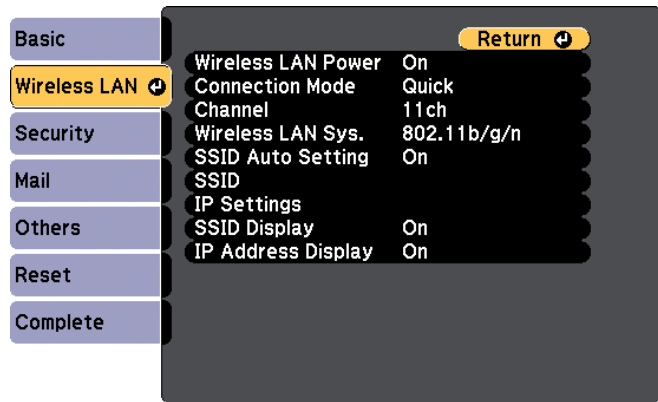


**5** Press the **Menu** button on the remote control, select the **Network** menu and press .



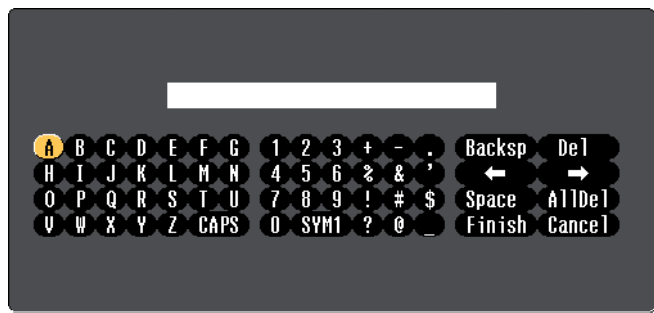
**6** Choose **Network Configuration** and press .

7 Select the **Wireless LAN** menu and press  $\leftarrow/\rightarrow$ .



8 Choose **Connection Mode**, press  $\leftarrow/\rightarrow$ , select **Quick** (for a direct connection to a computer, tablet, or smartphone) or **Advanced** (for a connection to a router or access point), then press  $\leftarrow/\rightarrow$  again. When you're finished, press **Esc** to return to the Wireless LAN menu.

9 If you chose the **Advanced** connection mode, select **SSID**, press  $\leftarrow/\rightarrow$ , and enter your network name (SSID) in the screen that appears.



- To select a character, use the arrow buttons on the remote control to highlight it, then press  $\leftarrow/\rightarrow$ .
- To enter a number, hold down the **Num** button on the remote control and press the numeric button.
- To switch between uppercase and lowercase letters, select **CAPS** and press  $\leftarrow/\rightarrow$ .
- To change the displayed symbols, select **SYM1** or **SYM2** and press  $\leftarrow/\rightarrow$ .

When you're finished entering the SSID, select **Finish** and press  $\leftarrow/\rightarrow$ .

10 If you chose the **Advanced** connection mode, select **IP settings** and press  $\leftarrow/\rightarrow$ .

If your network assigns addresses automatically, turn on **DHCP**. If not, turn off **DHCP** and enter the projector's **IP Address**, **Subnet Mask**, and **Gateway Address**, as needed.

To enter numbers, hold down the **Num** button on the remote control and press the numeric buttons. When you're finished, press **Esc** to return to the Wireless LAN menu.

11 To prevent the SSID and IP address from appearing on the network standby screen, set the **SSID Display** and/or **IP Address Display** settings to **Off**.

12 When you're finished selecting settings in the Wireless LAN menu, press **Esc**.

13 If you are connecting the projector to a secure network, select the **Security** menu and press  $\leftarrow/\rightarrow$ . Then select settings as necessary and press **Esc** when you're finished.

14 Select **Complete** and press  $\leftarrow/\rightarrow$ . Then select **Yes** and press  $\leftarrow/\rightarrow$  again.

15 See "Install network software" for additional instructions.

## Install network software

### Computer

To project over the network, download and install the EasyMP® Network Projection software on each computer that you will project from. To monitor and control your projector over the network, download and install the EasyMP Monitor software (Windows only). Click the icons on your desktop to access the software download pages.

For instructions on installing and using your network software, click the icons on your desktop to access the online *EasyMP Network Projection Operation Guide* or *EasyMP Monitor Operation Guide* (requires an Internet connection).

If you don't see the software download or guide icons on your desktop, you can install them from the projector CD or go to the Epson website, as described in "Where to get help."

### Mobile device

To project from an iOS® or Android™ tablet or smartphone, download and install the Epson iProjection™ app. Visit [www.epson.com/projectorapp](http://www.epson.com/projectorapp) for more information.



## Troubleshooting

If you see a blank screen or the **No signal** message after turning on your computer or video device, check the following:

- Make sure the **Status** light on the projector is blue and not flashing, and the **A/V Mute** slide is open.
- Press the **Source Search** button on the projector or the remote control to switch to the correct image source, if necessary.
- If you're using a Windows laptop, press the function key on your keyboard that lets you display on an external monitor. It may be labeled **CRT/LCD** or have an icon such as . You may have to hold down the **Fn** key while pressing it (such as **Fn + F7**). Wait a moment for the display to appear.
- If you're using a Mac laptop, open **System Preferences** and select **Displays**. Select the **Display** or **Color LCD** option if necessary, then click the **Arrange** or **Arrangement** tab, and select the **Mirror Displays** check box.

## Where to get help

### Manuals

For more information about using the projector, click the icons on your desktop to access the online manuals (requires an Internet connection). If you don't have icons for the manuals, you can install them from the projector CD or go to the Epson website, as described below.

### Telephone support services

You may also speak with a support specialist by calling:

<b>Argentina</b>	(54 11) 5167-0300	<b>Mexico</b>	
<b>Bolivia*</b>	800-100-116	<b>Mexico City</b>	(52 55) 1323-2052
<b>Chile</b>	(56 2) 2484-3400	<b>Other cities</b>	01-800-087-1080
<b>Colombia</b>	01 8000 915235	<b>Nicaragua*</b>	00-1-800-226-0368
<b>Costa Rica</b>	800-377-6627	<b>Panama*</b>	00-800-052-1376
<b>Dominican Republic*</b>	1-888-760-0068	<b>Peru</b>	
<b>Ecuador*</b>	1-800-000-044	<b>Lima</b>	(51 1) 418-0210
<b>El Salvador*</b>	800-6570	<b>Other cities</b>	0800-10126
<b>Guatemala*</b>	1-800-835-0358	<b>Uruguay</b>	00040-5210067
<b>Honduras**</b>	800-0122	<b>Venezuela</b>	(58 212) 240-1111
	Code: 8320		

\*Contact your local phone company to call this toll free number from a mobile phone.

\*\*Dial the first 7 digits, wait for a message, then enter the code.

If your country does not appear on the preceding list, please contact the dealer where you purchased the product. Toll or long distance charges may apply.

### Internet support

Visit [global.latin.epson.com/Soporte](http://global.latin.epson.com/Soporte) for solutions to common problems (website available in Spanish and Portuguese). You can download utilities and documentation, get FAQs and troubleshooting advice, or e-mail Epson.

## Optional accessories

For a list of optional accessories, see the online *User's Guide*.

You can purchase screens or other accessories from an Epson authorized reseller. To find the nearest reseller, contact Epson as described in "Where to get help."



# Notices

## Declaration of Conformity

According to 47CFR, Part 2 and 15, Class B Personal Computers and Peripherals; and/or CPU Boards and Power Supplies used with Class B Personal Computers

We: Epson America, Inc.  
Located at: 3840 Kilroy Airport Way  
MS: 3-13  
Long Beach, CA 90806  
Tel: (562) 981-3840

Declare under sole responsibility that the product identified herein, complies with 47CFR Part 2 and 15 of the FCC rules as a Class B digital device. Each product marketed, is identical to the representative unit tested and found to be compliant with the standards. Records maintained continue to reflect the equipment being produced can be expected to be within the variation accepted, due to quantity production and testing on a statistical basis as required by 47CFR 2.909. Operation is subject to the following two conditions: (1) this device may not cause harmful interference, and (2) this device must accept any interference received, including interference that may cause undesired operation.

Trade Name: Epson  
Type of Product: LCD Projector  
Model: H552A/H557A/H550A/H553A  
Marketing Name: PowerLite S18+/W15+/W18+/X24+

## Epson America, Inc. Limited Warranty

### 1. Limited Warranty for Epson Products

Epson products are covered by warranty against defects in workmanship and materials when operated under normal use and handling conditions, as indicated in the product documentation, for the period specified in section "Limited Warranty Coverage". Coverage begins as of the date of delivery to the purchaser by Epson or by an authorized Epson dealer, in the country of purchase.

Epson also guarantees that the consumables (ink cartridges, toner, batteries) included with the product, will perform according to the usage specifications as long as they are used prior to the expiration of their warranty period.

### 2. Scope of Warranty

Should Epson receive notice of a defect during the warranty period, it may, at its discretion, repair or replace the defective product at no cost to the purchaser. In the event of a replacement, the replaced equipment will become property of Epson. The replaced item may be new or previously repaired to the Epson standard of quality, and will assume the remaining warranty period of the product that was originally purchased.

This warranty does not include any compensation or damages whatsoever, resulting from the operating failures of the Epson product. In any event, Epson's maximum liability toward the purchaser will be limited to the purchase price paid to Epson or to the authorized dealer.

Epson's warranty does not cover any software not manufactured by Epson, even when delivered with an Epson product. The software may have a warranty provided by the manufacturer, as indicated in the documentation attached thereto.

### 3. Limitations and Exclusions

The warranty will be invalid in the following cases:

- 3.1 When the product's serial number has been removed or altered.
- 3.2 When the product has been misused, has undergone unauthorized modifications, has been used or stored in ways that are not in compliance with the environmental specifications of the product.
- 3.3 When the damage resulted from the use of refilled supplies or consumables, or when damages are the result of use of media that does not meet the product's specifications.
- 3.4 When damages resulted from the inappropriate transport of the equipment (packaging, installation, maintenance, transportation).
- 3.5 When damages were caused by natural or intentional disasters (fire, floods, lightning, earthquakes, etc.), power surges, or interaction with other brand products.
- 3.6 When the product has been totally or partially disassembled, or has been repaired other than by an Epson Authorized Service Center.
- 3.7 When substances have been spilled on the product.
- 3.8 When the external plastic case has been scratched or abused.
- 3.9 When damages resulted from inappropriate tests, installation, maintenance or adjustments.

The warranty does not extend to accessories (lids, covers, trays) or replenishing supplies and consumables (ink cartridges, toner, ink ribbons, batteries, photosensitive units, knobs, print heads, lamps), which, due to their nature, must be regularly purchased through authorized dealers.

### 4. How to Obtain Warranty Service

Please refer to the user documentation to ensure that the product settings have been properly set and to perform the diagnostic tests indicated therein. Furthermore, in order for the unit to operate optimally, always use original Epson supplies and consumables.

To obtain warranty service, the purchaser may take the product to any Authorized Epson Service Center, along with proof of purchase, or call any of the Epson Technical Assistance Centers (see country list below).

Upon calling an Authorized Epson Service Center, the purchaser will be asked to provide the product model and serial numbers, and may be asked to provide information on the location and the date of purchase (the warranty is only valid in the country of purchase).

If there are no Authorized Epson Service Centers in your area, call the Technical Assistance Center for service referral.

### 5. Responsibilities of Purchaser

The purchaser is responsible for the safety of all confidential and proprietary information stored on the product, as well as for recovery backup files in case of damage. Any activity related with the re-installation or resetting of the software that was delivered with the equipment, will be billed to the purchaser at the rates in effect at the Epson Service Center. This also applies if the failure was the result of a defect in the purchaser's proprietary software or of a computer "virus".

In order to obtain on-site service, the purchaser will be required to provide: access to the product; an appropriate working area; access to electrical facilities; access to the resources that may be necessary for the installation, repair or maintenance of the unit; a safety environment for Epson staff and their work tools.

### 6. Limited Warranty Coverage

Product	Projector
Model	PowerLite
Coverage Period	Two years
Condiciones	Service Center
Notes	The lamp has a 90 day warranty.

Epson offers technical assistance through electronic and telephone services. Before calling Epson, refer to the documentation included with your product. If you do not find the solution to your problem, visit Epson's website at: [global.latin.epson.com](http://global.latin.epson.com) or call the local Epson office or an authorized dealer.

### Service Centers

<b>Argentina</b>	(54 11) 5167-0300	<b>Mexico</b>	
<b>Bolivia*</b>	800-100-116	<b>Mexico City</b>	(52 55) 1323-2052
<b>Chile</b>	(56 2) 2484-3400	<b>Other cities</b>	01-800-087-1080
<b>Colombia</b>	01 8000 915235	<b>Nicaragua*</b>	00-1-800-226-0368
<b>Costa Rica</b>	800-377-6627	<b>Panama*</b>	00-800-052-1376
<b>Dominican Republic*</b>	1-888-760-0068	<b>Peru</b>	
<b>Ecuador*</b>	1-800-000-044	<b>Lima</b>	(51 1) 418-0210
<b>El Salvador*</b>	800-6570	<b>Other cities</b>	0800-10126
<b>Guatemala*</b>	1-800-835-0358	<b>Uruguay</b>	00040-5210067
<b>Honduras**</b>	800-0122	<b>Venezuela</b>	(58 212) 240-1111
	Code: 8320		

\*Contact your local phone company to call this toll free number from a mobile phone.

\*\*Dial first 7 digits, wait for a message, then enter code.

If your country does not appear on the preceding list, please contact the dealer where you purchased the product.

You may receive help or consult information online for all Epson products. Register your Epson equipment on our website, at [global.latin.epson.com](http://global.latin.epson.com).

### Extended Warranty Support and Service

In some countries, Epson offers warranty extension services. You may purchase this service by calling the Technical Service Centers.

**EPSON**  
EXCEED YOUR VISION



EPSON, EasyMP, and PowerLite are registered trademarks, Epson iProjection is a trademark, and EPSON Exceed Your Vision is a registered logomark of Seiko Epson Corporation.

Mac and Mac OS are trademarks of Apple Inc., registered in the U.S. and other countries.

General Notice: Other product names used herein are for identification purposes only and may be trademarks of their respective owners. Epson disclaims any and all rights in those marks.

This information is subject to change without notice.

© 2013 Epson America, Inc. 7/13  
Printed in XXXXXX

CPD-39527R1