

EasyMP Multi PC Projection Operation Guide

Contents

Introduction to EasyMP Multi PC Projection	7
EasyMP Multi PC Projection Features	7
Connection to Various Devices.....	7
Four-Panel Display	8
Change Presenters and Projection Position	9
Moderator Function	10
Setting Up EasyMP Multi PC Projection for the First Time	12
Installing the Software	12
EasyMP Multi PC Projection System Requirements.....	12
Installing EasyMP Multi PC Projection (Windows)	14
Installing EasyMP Multi PC Projection (Mac OS X)	15
Setting Up the Projector	15
Recommended Wireless Environment for Multi PC Projection	16
Setting Up a Projector to Connect in Advanced Connection Mode (Wireless).....	16
Setting Up a Projector to Connect in Advanced Connection Mode (Wired)	17
Connecting to the Projector and Projecting Images	20
Connection Methods	20
Connection Methods for Various Meeting Styles	20
Connecting to the Projector from the Software over a Network System	22
Selecting the Projector Search Method	25
Search Methods	26
Searching for Network Projectors Automatically.....	26
Searching for Network Projectors by Specifying an IP Address or Projector Name.....	27
Searching for Network Projectors Using a Profile	29
Profiles for Search	29
Performing a Profile Search	29
Registering a Profile.....	31
Exporting a Profile.....	33
Importing a Profile.....	33
Sharing a Profile over a Network.....	34

Controlling the Projected Display	35
Screen Types for Projection Control.....	35
Operating the Projected Display Status.....	36
Changing the Number of Projected Panels.....	37
Changing the Presenter.....	39
Changing the Projection Position.....	40
Disconnecting.....	41
Using Additional Functions.....	44
Searching for Network Projectors Using a Shortcut	44
Creating a Shortcut.....	44
Connecting to Multiple Projectors (Mirroring)	45
Outputting Audio from the Projector	46
Projecting Your Screen	47
Changing the Moderator.....	48
Hiding the Projection Control Screen	49
Solving Problems	51
Solving Network Connection Problems	51
Solutions When You Cannot Connect Projectors (Wireless)	51
Solutions When You Cannot Connect Projectors (Wired).....	53
Solving Problems During Projection	54
Solutions When the Computer Screen is Not Displayed Properly.....	55
Solutions When the Screen is Not Projected Properly	55
Solutions When Audio is Not Played Properly	56
Error Messages List	56
Error Messages When Starting up EasyMP Multi PC Projection	56
Error Messages When Searching for and Selecting Projectors	59
Error Messages When Projecting.....	60
Error Messages When Operating a Profile	60
Error Messages When Using the Moderator Function	61
Event ID List.....	62
Screen Summary	64
Search Screen	64
Save Screen.....	67

Set options	68
Set options - User Settings	69
Set options - General settings	70
Set options - Adjust performance	72
Set options - Audio Output.....	73
Toolbar	74
Projection Control Screen	76
Appendix.....	80
Updating and Uninstalling the Software	80
Getting the Latest Version of the Application	80
Uninstalling EasyMP Multi PC Projection (Windows XP/Windows Vista/Windows 7)	80
Uninstalling EasyMP Multi PC Projection (Windows 8).....	81
Uninstalling EasyMP Multi PC Projection (Mac OS X)	81
Supported Resolutions and Colors.....	82
Supported Resolutions	82
Display Color	82
Limitations	83
Connection Limitations	83
Limitations when Projecting from Windows Photo Gallery or Windows Live Photo Gallery	84
Limitations in Windows Aero.....	84
Limitations when Projecting from Windows Media Center	85
Notices	85
Copyright Notice	86
About Notations	86
General Notice.....	87
Copyright Attribution	87

Introduction to EasyMP Multi PC Projection

See the information here to learn more about EasyMP Multi PC Projection software.

[EasyMP Multi PC Projection Features](#)

EasyMP Multi PC Projection Features

EasyMP Multi PC Projection is software that allows you to hold interactive meetings by projecting images from network projectors. You can use a variety of display options for your environment.

[Connection to Various Devices](#)

[Four-Panel Display](#)

[Change Presenters and Projection Position](#)

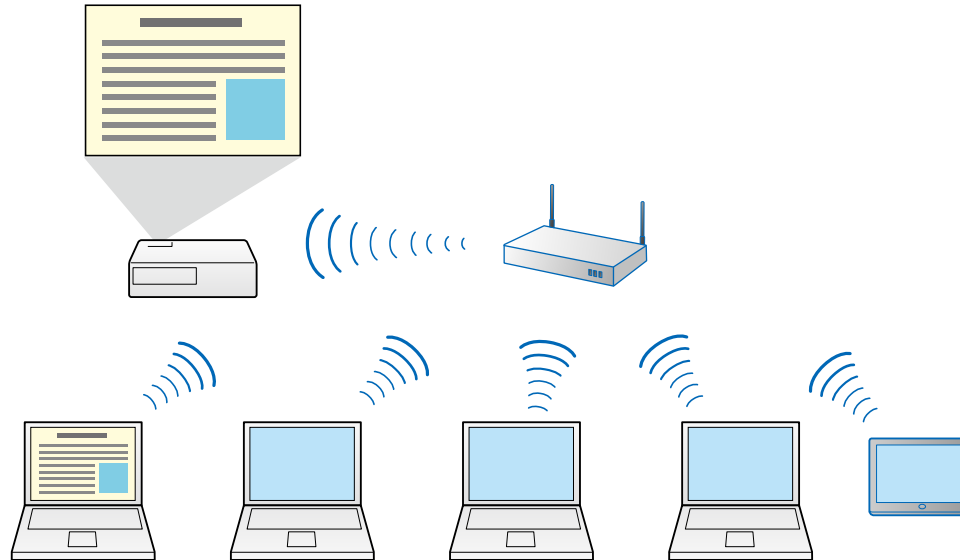
[Moderator Function](#)

Parent topic: [Introduction to EasyMP Multi PC Projection](#)

Connection to Various Devices

When you install EasyMP Multi PC Projection on a networked computer and use it to connect to the projector, up to 50 other devices on the network can project images from the projector. (Up to four devices can project at one time.) The 50 devices can be a combination of computers running EasyMP Multi PC Projection and wireless devices, such as smartphones and tablets, running Epson iProjection. The computers running EasyMP Multi PC Projection can control the projection from multiple devices, but the devices running Epson iProjection can only project.

You can also hold remote meetings over a network by simultaneously projecting the same image on up to four projectors on the network.



Parent topic: [EasyMP Multi PC Projection Features](#)

Related tasks

[Connecting to Multiple Projectors \(Mirroring\)](#)

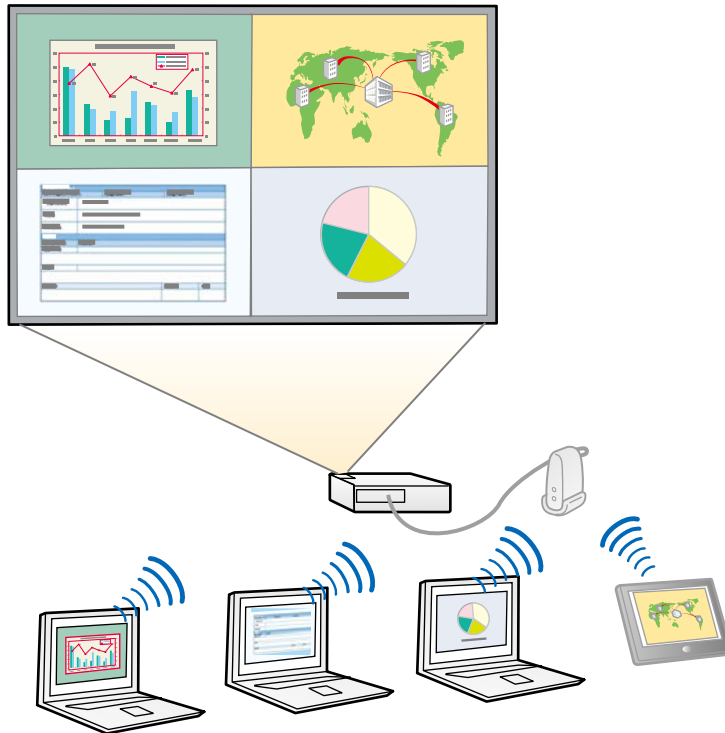
Related topics

[Connection Methods](#)

Four-Panel Display

You can simultaneously display up to four screens in separate projected panels, which is useful in both business and educational environments.

For example, you can compare and analyze data while simultaneously projecting screens from multiple devices. In an educational environment, you can project lesson material on one part of the screen and student answers on another to enhance the learning experience.



Parent topic: [EasyMP Multi PC Projection Features](#)

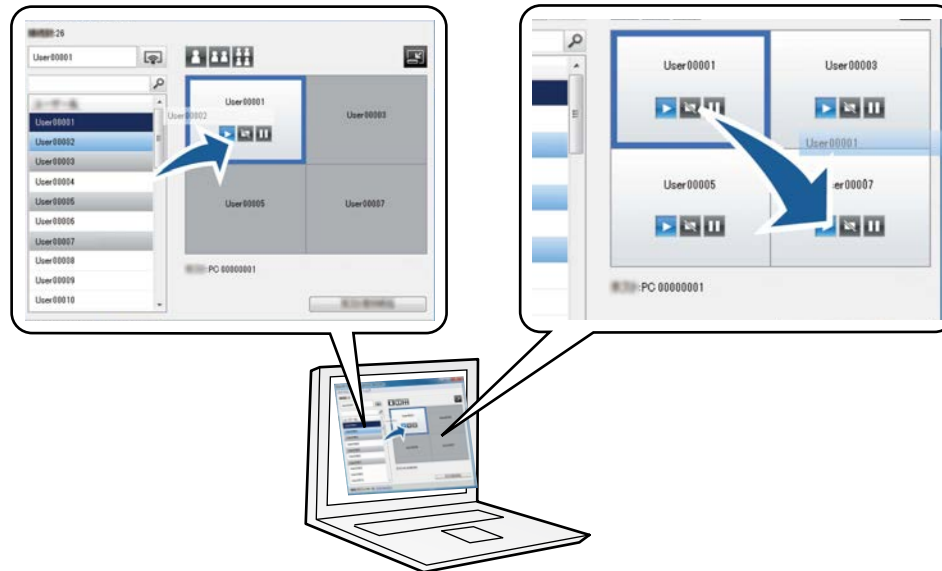
Related tasks

[Changing the Number of Projected Panels](#)

Change Presenters and Projection Position

Using EasyMP Multi PC Projection, you can easily change the screen being projected and the projection position by simply dragging and dropping user names in panels on the projection control screen.

You can share the projector with other users on the same network without having to change cable connections, allowing users to take turns giving presentations.



Note: The projection control screen may not be available on all versions of this software.

Parent topic: [EasyMP Multi PC Projection Features](#)

Related tasks

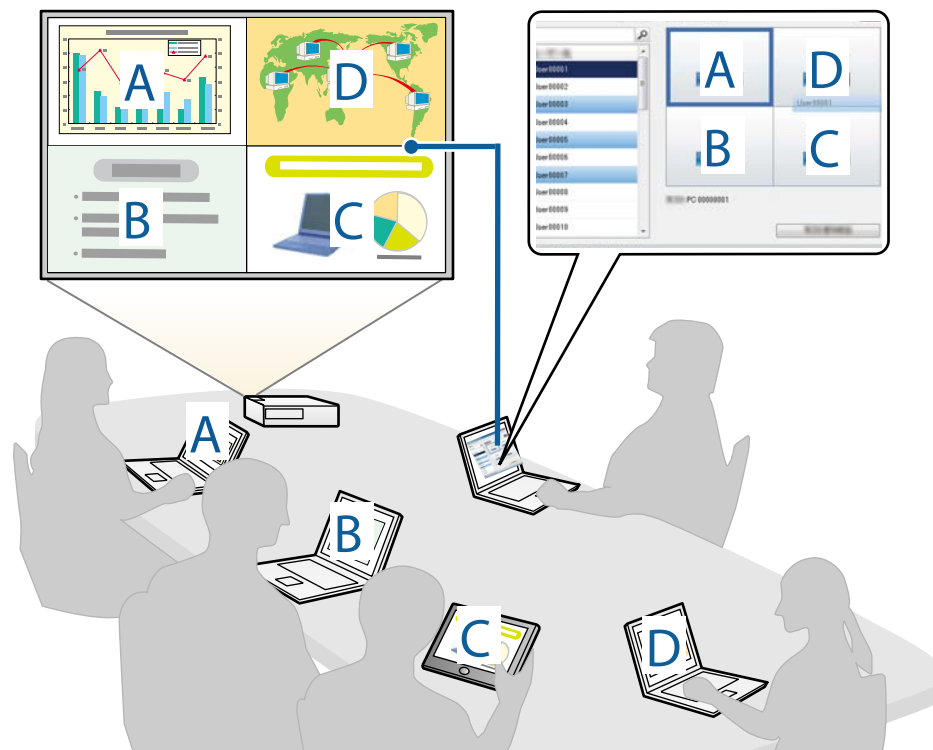
[Changing the Presenter](#)

[Changing the Projection Position](#)

Moderator Function

When using the moderator function, only one person plays a role of moderator who can control the projected display. This function is suitable for meetings in which one user is the moderator and the other users are participants, and the moderator must control the projected display.

This can also be useful in a classroom environment where the moderator must control the lesson without interruption.



Note: This function is available only for supported models.

Parent topic: [EasyMP Multi PC Projection Features](#)

Related tasks

[Changing the Moderator](#)

Related topics

[Connection Methods](#)

Setting Up EasyMP Multi PC Projection for the First Time

Follow these instructions before connecting a computer to the projector over a network.

[Installing the Software](#)

[Setting Up the Projector](#)

Installing the Software

Install EasyMP Multi PC Projection from the EPSON Projector Software CD-ROM supplied with your projector (if available) or by downloading it from the Epson Web site.

Note:

- If the language selected for the installation differs from the language of the operating system being used, the screens may not be displayed correctly.
- If a previous version of EasyMP Multi PC Projection is already installed on your computer, uninstall it first and then install EasyMP Multi PC Projection.

[EasyMP Multi PC Projection System Requirements](#)

[Installing EasyMP Multi PC Projection \(Windows\)](#)

[Installing EasyMP Multi PC Projection \(Mac OS X\)](#)

Parent topic: [Setting Up EasyMP Multi PC Projection for the First Time](#)

Related tasks

[Getting the Latest Version of the Application](#)

EasyMP Multi PC Projection System Requirements

Your computer must meet the following system requirements to use the EasyMP Multi PC Projection software.

Requirement	Windows	Mac
Operating system	Windows XP <ul style="list-style-type: none"> • Professional (32-bit) • Home Edition (32-bit) • Tablet PC Edition (32-bit) 	Mac OS X <ul style="list-style-type: none"> • 10.4.x (32-bit) • 10.5.1 or later (32-bit) • 10.6.x (32- and 64-bit) • 10.7.x (32- and 64-bit) • 10.8.x (64-bit) • 10.9.x (64-bit) • 10.10.x (64-bit)
	Windows Vista <ul style="list-style-type: none"> • Ultimate (32-bit) • Enterprise (32-bit) • Business (32-bit) • Home Premium (32-bit) • Home Basic (32-bit) 	
	Windows 7 <ul style="list-style-type: none"> • Ultimate (32- and 64-bit) • Enterprise (32- and 64-bit) • Professional (32- and 64-bit) • Home Premium (32- and 64-bit) • Home Basic (32-bit) • Starter (32-bit) 	
	Windows 8 <ul style="list-style-type: none"> • Windows 8 (32- and 64-bit) • Windows 8 Pro (32- and 64-bit) • Windows 8 Enterprise (32- and 64-bit) 	
	Windows 8.1 <ul style="list-style-type: none"> • Windows 8.1 (32- and 64-bit) • Windows 8.1 Pro (32- and 64-bit) • Windows 8.1 Enterprise (32- and 64-bit) 	

Requirement	Windows	Mac
CPU	Mobile Pentium III 1.2 GHz or faster (Pentium M 1.6 GHz or faster recommended)	Power PC G3 900 MHz or faster (CoreDuo 1.5 GHz or faster recommended)
Memory	256 MB or more (512 MB or more recommended)	
Hard disk space	20 MB or more	
Display	Resolution between 1024 × 768 (XGA) and 1920 × 1200 (WUXGA) 16-bit color or greater (approximately 32,000 display colors)	

Note:

- Operation is not guaranteed for Windows XP without any service packs installed, or Windows XP Service Pack 1.
- Operation is not guaranteed for Mac OS X 10.5.0 because the Firewall settings are not set correctly when the version is updated.

Parent topic: [Installing the Software](#)

Installing EasyMP Multi PC Projection (Windows)

Install EasyMP Multi PC Projection on your computer.

Note: You need administrator authority to install the software.

1. Turn on your computer.
2. Make sure all running applications are closed.
3. Do one of the following:
 - Insert the EPSON Projector Software CD-ROM into the computer (if available) and continue with these steps.
 - If you downloaded the software from the Epson Web site, follow the on-screen instructions to install the software.

The installer starts automatically.

4. If the installer does not start automatically, open the CD-ROM drive from **My Computer** (or **Computer**), and then double-click **InstallNavi.exe**.
5. Follow the on-screen instructions to install.

Parent topic: [Installing the Software](#)

Installing EasyMP Multi PC Projection (Mac OS X)

Install EasyMP Multi PC Projection on your computer.

1. Turn on your computer.
2. Make sure all running applications are closed.
3. Do one of the following:
 - Insert the EPSON Projector Software CD-ROM into the computer (if available) and continue with these steps.
 - If you downloaded the software from the Epson Web site, follow the on-screen instructions to install the software.
4. Double-click the **Install Navi** icon in the EPSON window.
Installation starts.
5. Follow the on-screen instructions to install.

Parent topic: [Installing the Software](#)

Setting Up the Projector

Follow these instructions to set up a projector to connect to a wireless or wired LAN. When connecting the projector to a wireless LAN, connect using the **Advanced Connection Mode**. You cannot connect using the **Quick Connection Mode**.

[Recommended Wireless Environment for Multi PC Projection](#)

[Setting Up a Projector to Connect in Advanced Connection Mode \(Wireless\)](#)

[Setting Up a Projector to Connect in Advanced Connection Mode \(Wired\)](#)

Parent topic: [Setting Up EasyMP Multi PC Projection for the First Time](#)

Recommended Wireless Environment for Multi PC Projection

When you connect a projector to a wireless LAN and connect multiple devices wirelessly, note the following recommendations.

- Set up multiple access points so that one of the access points can connect up to 10 or 20 devices. See the access point manual for more information on the maximum number of devices that can be connected.
- When you use multiple access points, assign a different channel to each access point, and use different access points for the projector connection and the computer connection.
- Use a wireless LAN controller, if possible, to enhance the connection stability.
- Use an access point that supports 802.11n.

Contact your network administrator for help in setting up the wireless environment.

Parent topic: [Setting Up the Projector](#)

Setting Up a Projector to Connect in Advanced Connection Mode (Wireless)

To connect a computer to the projector over a wireless LAN, you need to select network settings on the computer and the projector.

1. Contact your network administrator and write down the settings for the access point, such as the SSID and security settings.
2. Connect the computer to the network.

Note: To set up a network connection, if necessary, see the documentation supplied with your computer or network adapter.

3. Install the wireless LAN unit in the projector, if necessary. See the *User's Guide* supplied with the projector for more details.
4. Turn on the projector.
5. Press the **Menu** button on the remote control or the control panel, select the **Network** menu, and then select **Network Configuration**.
6. Select **Wireless LAN**.

A screen like one of the following is displayed.



7. Select **On** for **Wireless LAN Power**.

Note: Depending on the projector model, you may need to select **Wireless LAN On** as the **Wireless Mode** setting in the **Network** menu instead.

8. Select **Advanced** for **Connection Mode**.
9. Select other options as necessary for your network. See the *User's Guide* supplied with the projector for more details.
10. Select security settings on the **Security** menu as necessary for your network. Check with your network administrator for more information on making the correct settings.
11. When you have finished making settings, select **Setup Complete** or **Complete**, and follow the on-screen instructions to save your settings and exit the menus.

Parent topic: [Setting Up the Projector](#)

Related tasks

[Connecting to the Projector from the Software over a Network System](#)

Setting Up a Projector to Connect in Advanced Connection Mode (Wired)

To connect a computer to the projector using a wired LAN, you need to select network settings on the computer and the projector.

1. Contact your network administrator and check that DHCP is available under the current network environment.

Note: If DHCP is not available, write down the following values that are available for your projector.

- IP Address
- Subnet Mask
- Gateway Address

2. Connect the computer to the network.

Note: To set up a network connection, if necessary, see the documentation supplied with your computer or network adapter.

3. Connect a LAN cable to the projector.
4. Turn on the projector.
5. Press the **Menu** button on the remote control or the control panel, select the **Network** menu, and select **Network Configuration**.
6. Select **Wired LAN**.

A screen like one of the following is displayed.



7. Select IP settings as necessary.
 - DHCP is available: Set **DHCP** to **On**.

- DHCP is not available: Set **DHCP** to **Off** and enter the projector's IP Address, Subnet Mask, and Gateway Address values as necessary.
8. When you have finished making settings, select **Setup Complete** or **Complete**, and follow the on-screen instructions to save your settings and exit the menus.

Parent topic: [Setting Up the Projector](#)

Related tasks

[Connecting to the Projector from the Software over a Network System](#)

Connecting to the Projector and Projecting Images

Follow these instructions to connect the computer and the projector over a network, and to project images from your computer's screen using the projector.

Make sure you have already set up EasyMP Multi PC Projection.

[Connection Methods](#)

[Selecting the Projector Search Method](#)

[Controlling the Projected Display](#)

[Disconnecting](#)

Related topics

[Installing the Software](#)

[Setting Up the Projector](#)

Connection Methods

You can select a suitable method to connect the computer and the projector over a network depending on your meeting style.

[Connection Methods for Various Meeting Styles](#)

[Connecting to the Projector from the Software over a Network System](#)

Parent topic: [Connecting to the Projector and Projecting Images](#)

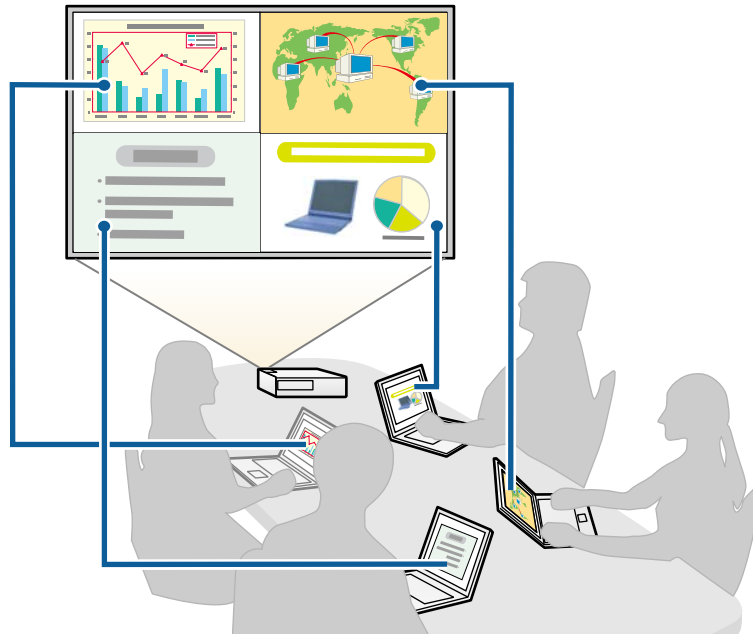
Connection Methods for Various Meeting Styles

You can choose a connection method to suit the style of your meeting.

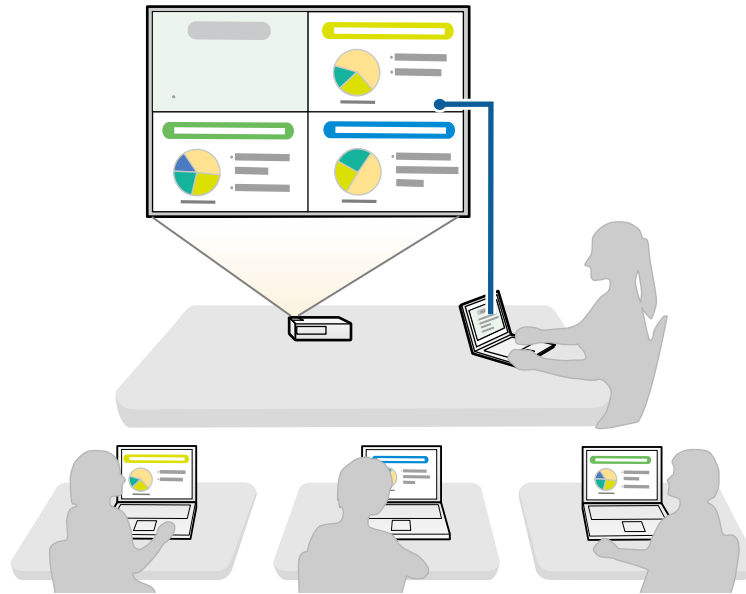
Decide how you want to hold your meeting. Depending on the connection method you selected, the connection procedure differs.

Note: Depending on your projector, some connection methods may not be available. See the *User's Guide* supplied with the projector for more details.

- All users can control the projected display and become presenters. (Holding discussions and interacting with other users in a business environment.)



- Only one user is the moderator and has full control over the meeting using the moderator function.
(Holding a class or lesson using the participants' computer screens in an educational environment.)



Note: To start a meeting using the moderator function, one user must connect to the projector as the moderator and the other users must connect to the projector as participants.

Parent topic: [Connection Methods](#)

Related tasks

[Changing the Moderator](#)

[Connecting to the Projector from the Software over a Network System](#)

Connecting to the Projector from the Software over a Network System

When your projector is set up as indicated below, you can connect the projector and a computer over a network by using EasyMP Multi PC Projection.

- The wireless LAN unit is installed in the projector (wireless networks only).
- A LAN cable is connected to the projector (wired networks only).
- The projector's connection method is set to **Advanced**.

Note: Make sure you also connected a computer to the network.

1. Press the **LAN** button or **Source Search** button on the remote control to switch the input source to LAN.

The LAN standby screen is projected.



2. Start EasyMP Multi PC Projection.
 - **Windows XP, Windows Vista, and Windows 7:** Click **Start**, select **Programs** (or **All Programs**), **EPSON Projector**, **EasyMP Multi PC Projection**, and then click **EasyMP Multi PC Projection Ver.X.XX**.
 - **Windows 8 and Windows 8.1:** Navigate to the **Apps** screen and select **EasyMP Multi PC Projection Ver.X.XX**.
 - **Mac OS X:** Double-click **EasyMP Multi PC Projection Ver.X.XX** from the **Applications** folder.

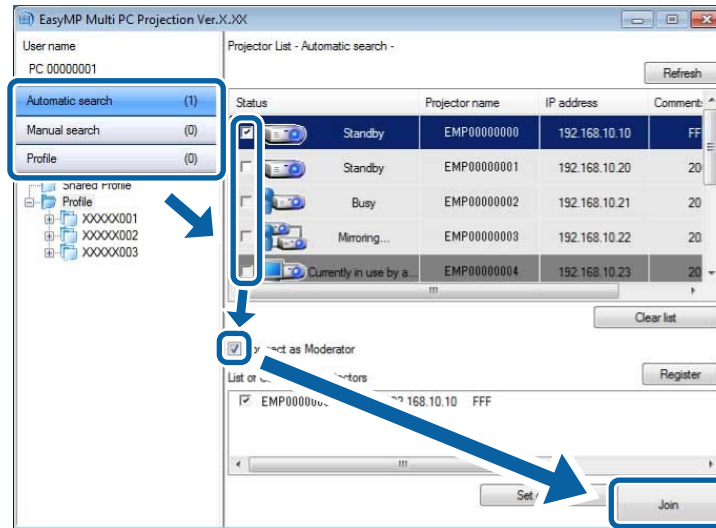
The search screen is displayed.

Note: You can also create a shortcut and use it to start EasyMP Multi PC Projection and to automatically search for saved projectors.

3. Search for the projector using one of the following methods.
 - **Automatic search:** Searches for the projector automatically.
 - **Manual search:** Searches for the projector based on a specified IP address or projector name.
 - **Profile:** Searches for the projector based on a previously saved profile.

The projector search results are displayed.

4. Select the projector you want to connect to from the **Projector List**, and then perform one of the following operations.
 - All users can become presenters, or are participants in the moderator function: Make sure **Connect as Moderator** is not selected, and then click **Join**.
 - User is the moderator in the moderator function: Select **Connect as Moderator**, and then click **Join**.



Note:



- The moderator function is available only for supported models and may not be available on all versions of this software.
- When one user connects as a moderator, the moderator function turns on.

When **Projector Keyword** is set to **On** in the projector settings, the keyword entry screen is displayed.

5. Enter the keyword displayed on the LAN standby screen, and then click **OK** as necessary.

When the connection is complete, the EasyMP Multi PC Projection toolbar is displayed on the computer screen.



The computer screen for the user who connects first is projected in full screen mode. Users who connect later can project their own screen by clicking the  button on the toolbar or can control the projected display from the projection control screen by clicking the  button on the toolbar.

Note:

- When a connection is established, the input source for the projector automatically switches to the LAN source if no other signal is being input. If the input source does not automatically switch to the LAN source, press the **LAN** button or **Source Search** button on the remote control.
- The displayed toolbar varies depending on the connection method and the version of this software.
- When using the moderator function, only the moderator can control the projected display.

Parent topic: [Connection Methods](#)

Related tasks

[Setting Up a Projector to Connect in Advanced Connection Mode \(Wireless\)](#)

[Setting Up a Projector to Connect in Advanced Connection Mode \(Wired\)](#)

[Disconnecting](#)

Related topics

[Selecting the Projector Search Method](#)

[Controlling the Projected Display](#)

[Searching for Network Projectors Using a Shortcut](#)

Selecting the Projector Search Method

You can select a suitable method to search for a projector depending on the status or location of the projector you want to connect to.

[Search Methods](#)

[Searching for Network Projectors Automatically](#)

[Searching for Network Projectors by Specifying an IP Address or Projector Name](#)

[Searching for Network Projectors Using a Profile](#)

Parent topic: [Connecting to the Projector and Projecting Images](#)

Search Methods

You can use one of the following methods to search for the projector you want to connect to. Choose the best method depending on your environment.

- Searching for Network Projectors Automatically

You can automatically search for available projectors on the network.

Searches are performed only on the same subnet. Projectors on different subnets are not displayed in the search results.

- Searching for Network Projectors by Specifying an IP Address or Projector Name

If the projector you want to connect to is not found automatically, you can search for the target projector by specifying the IP address or a projector name. You can also search for projectors at remote locations on a different subnet.

- Searching for Network Projectors Using a Profile

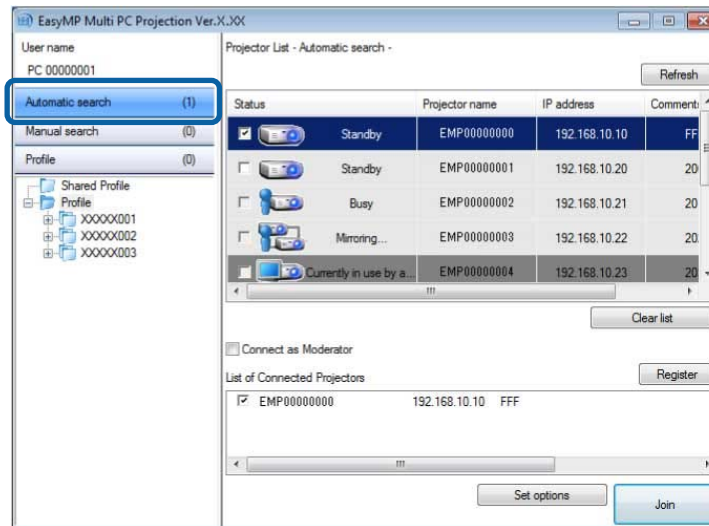
You can save network projector information as a profile, and then specify the profile to search for the same projector instead of providing projector details each time you search. By creating a group of profiles for each place where a projector is setup and managing them with folders, the target projector can be found quickly.

Parent topic: [Selecting the Projector Search Method](#)

Searching for Network Projectors Automatically

You can automatically search for available projectors on the network, and then project images by simply selecting the projector.

Click **Automatic search** on the search screen.



The search results are displayed.

When you click **Refresh**, the latest information is displayed.

If you cannot find any projectors, try one of the other search methods.

Parent topic: [Selecting the Projector Search Method](#)

Related concepts

[Search Methods](#)

Related tasks

[Searching for Network Projectors by Specifying an IP Address or Projector Name](#)

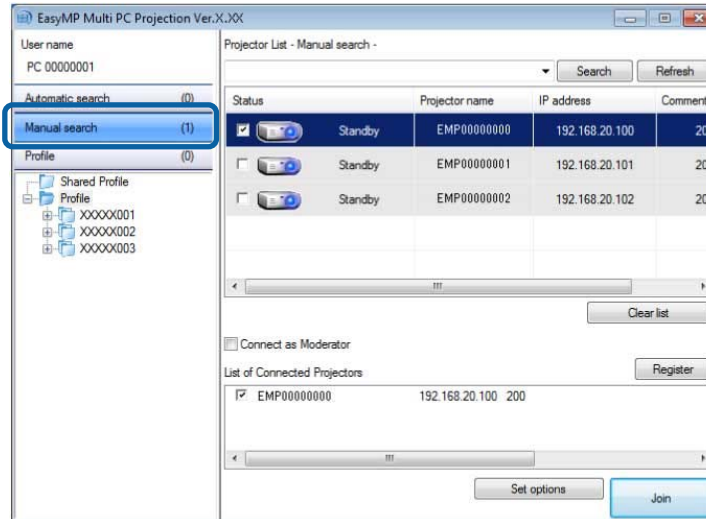
Related topics

[Searching for Network Projectors Using a Profile](#)

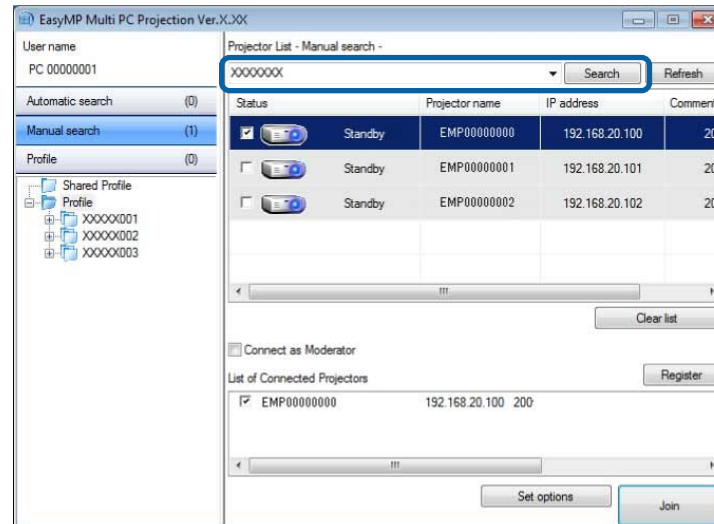
Searching for Network Projectors by Specifying an IP Address or Projector Name

If the projector you want to connect to is not found automatically, you can search for the target projector by specifying the IP address or the projector name.

1. Click **Manual search** on the search screen.



2. Enter the IP address or the projector name for the projector you want to connect to, and then click **Search**.



The search results are displayed.

Parent topic: [Selecting the Projector Search Method](#)

Searching for Network Projectors Using a Profile

You can save network projector information as a profile, and then search for the same projector using the profile instead of specifying the projector details each time.

[Profiles for Search](#)

[Performing a Profile Search](#)

[Registering a Profile](#)

[Exporting a Profile](#)

[Importing a Profile](#)

[Sharing a Profile over a Network](#)

Parent topic: [Selecting the Projector Search Method](#)

Profiles for Search

You can save information for a network projector as a profile. A profile is a file containing all of the projector's information, such as the projector name and IP address. By using a profile, you can easily search for saved projectors instead of providing projector details.

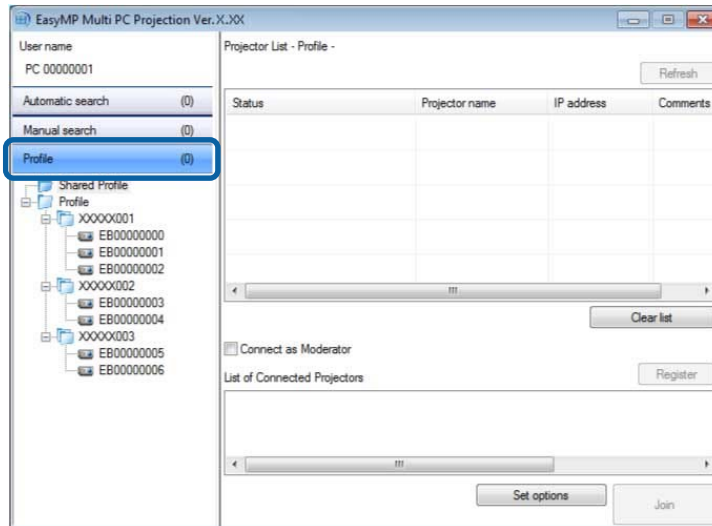
You can export the registered profile to create a backup, and then import it locally to easily search for projectors on another computer. You can also share the exported profile over a network, allowing other users to easily search for projectors.

Parent topic: [Searching for Network Projectors Using a Profile](#)

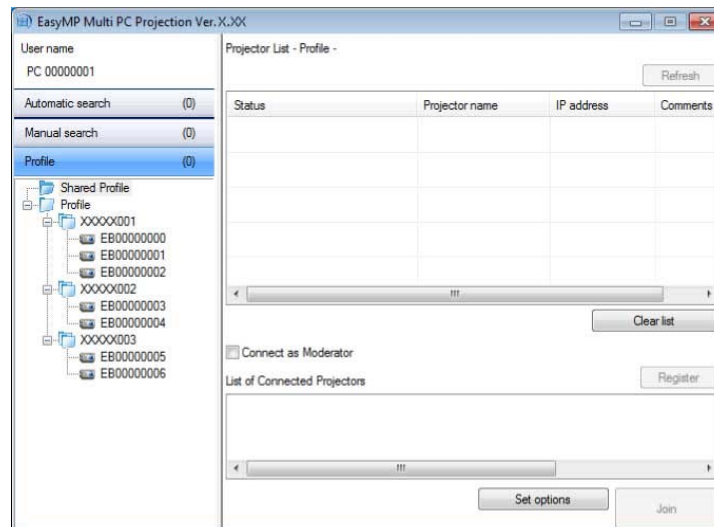
Performing a Profile Search

You can specify the profile to search for the saved projector instead of providing projector details each time you search.

1. Click **Profile** on the search screen.



2. Double-click the folder or the projector icon for the profile you want to use from the list.



The search results are displayed.

Parent topic: [Searching for Network Projectors Using a Profile](#)

Related tasks

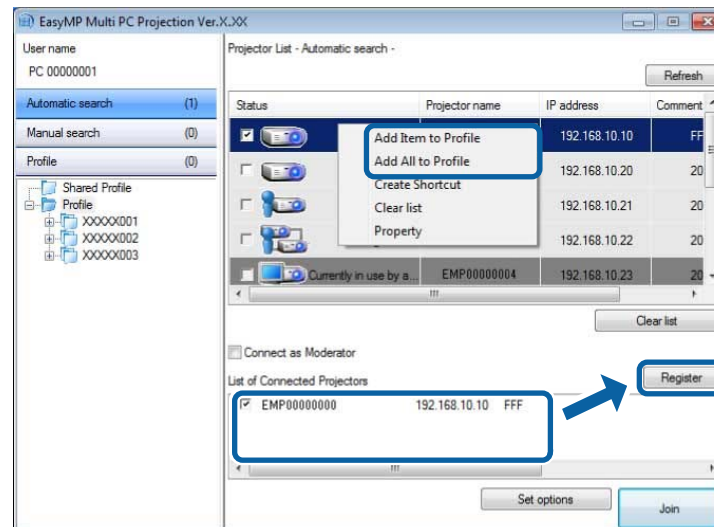
[Registering a Profile](#)

Registering a Profile

After searching for a projector, you can save the projector details as a profile using a memorable name that you can search for easily later.

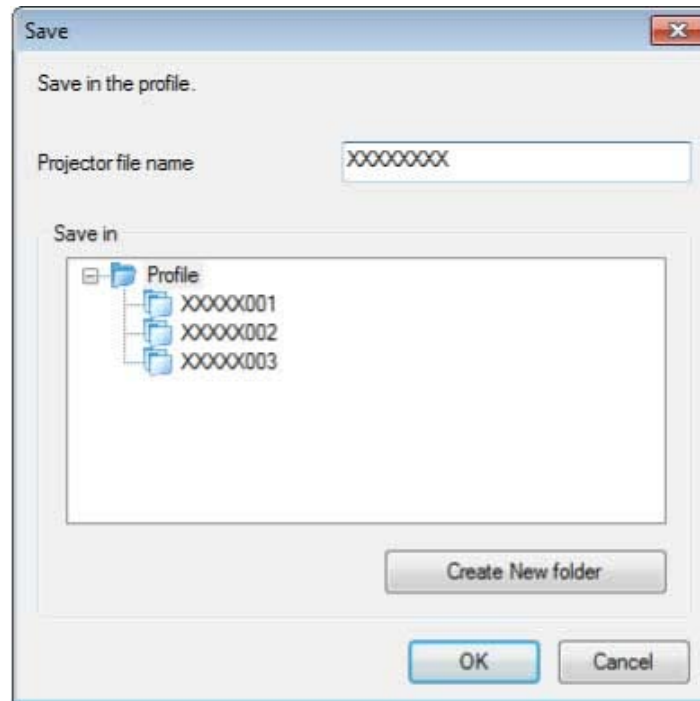
Note: You cannot register a profile under the **Shared Profile** folder on the search screen.

1. While the projectors are displayed on the search screen, perform one of the following operations.
 - Register projectors displayed in the **List of Connected Projectors**: Click **Register**.
 - Register a specific projector: Right-click the projector you want to register in the **Projector List**, and then click **Add Item to Profile**.
 - Register all projectors found by the search: Right-click one of the projectors in the **Projector List**, and then click **Add All to Profile**.



The **Save** screen is displayed.

2. Enter the **Projector file name**, and select the folder where you want to save the profile, and then click **OK**.



The profile is registered and the projector information is saved in the profile.

Note:

- The folder structure can be six folders deep.
- Click **Create New folder** if you want to create a new folder.
- To register a specific projector, you can drag and drop the projector from the **Projector List** to the folder under **Profile**.
- You can drag and drop profiles and folders to change the folder structure.

Parent topic: [Searching for Network Projectors Using a Profile](#)

Exporting a Profile

You can export a profile and share it with other users allowing them to easily search for projectors and join a meeting.

Note: You cannot export the profiles under the **Shared Profile** folder on the search screen.

1. On the search screen, right-click the folder containing the profile you want to share under **Profile**, and then click **Export**.

The **Save As** screen is displayed.

2. Select where you want to save the profile (.mplist), and then click **Save**.

The profile is exported.

Parent topic: [Searching for Network Projectors Using a Profile](#)

Related tasks

[Registering a Profile](#)

[Importing a Profile](#)

[Sharing a Profile over a Network](#)

Importing a Profile

You can locally import an exported profile and use it to easily search for projectors and join a meeting.

Note:

- You can also import a profile (.plist) exported using EasyMP Network Projection. However, you cannot import a profile in which the projectors are connected using **Quick Connection Mode**.
- You cannot import profiles under the **Shared Profile** folder on the search screen.

1. On the search screen, right-click the folder to which you want to import the profile under **Profile**, and then click **Import**.

The **Open** screen is displayed.

2. Select the profile (.mplist), and then click **Open**.

The profile is imported locally.

Parent topic: [Searching for Network Projectors Using a Profile](#)

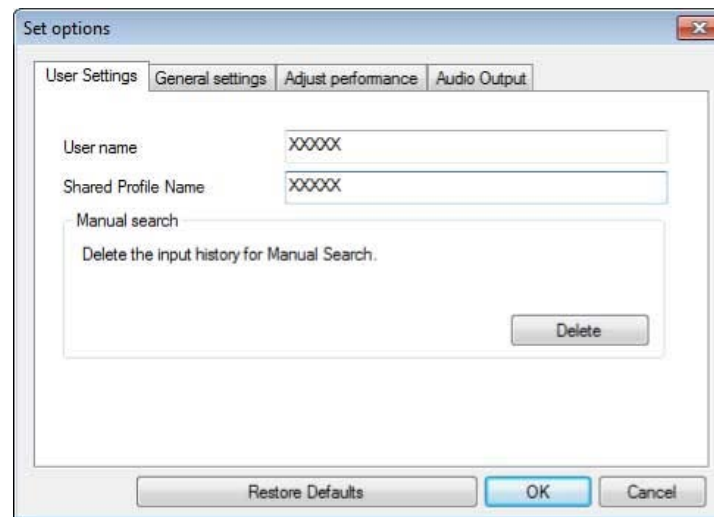
Related tasks

[Exporting a Profile](#)

Sharing a Profile over a Network

You can share an exported profile with other users over a network so that any changed projector information is easily updated. The shared profile is read and updated automatically when EasyMP Multi PC Projection is started.

1. Place the profile (.mplist) in a shared network location such as a server.
2. Click **Set options** on the search screen.
The **Set options** screen is displayed.
3. Click the **User Settings** tab.
4. Enter the network location or URL to the shared profile (including the name of the profile) in **Shared Profile Name**.
 - For a file server (Windows only): \\xxxxx\xxxxx.mplist
 - For a web server: http://xxxxx/xxxxx.mplist



5. Click **OK**.

The shared profile is read and the **Set options** screen closes.

Note: The shared profile is read only and cannot be edited in EasyMP Multi PC Projection.

Parent topic: [Searching for Network Projectors Using a Profile](#)

Related tasks

[Exporting a Profile](#)

Controlling the Projected Display

Follow these instructions to use the toolbar and the projection control screen to control the screen being projected.

[Screen Types for Projection Control](#)

[Operating the Projected Display Status](#)



[Changing the Number of Projected Panels](#)

[Changing the Presenter](#)

[Changing the Projection Position](#)

Parent topic: [Connecting to the Projector and Projecting Images](#)

Screen Types for Projection Control

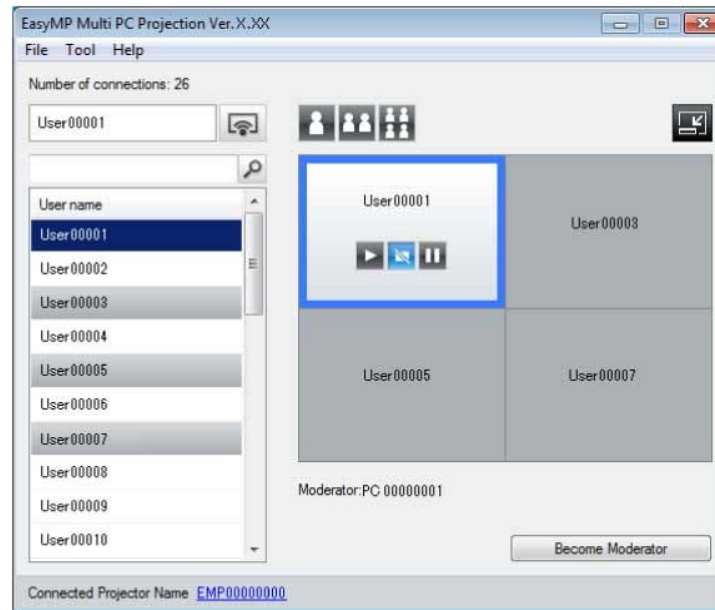
You can choose the type of screen you use to control projected images to suit your situation. You can switch the screen type by clicking the  button on the toolbar or the  button on the projection control screen.

Note:

- The displayed toolbar and the projection control screen vary depending on the connection method and the version of this software.
- The projection control screen may not be available on all versions of this software.
- Use the toolbar to display a wide image of the projected display and perform operations on the projected image.



- Use the projection control screen to change the number of projected panels, presenters, or the projection position.



Parent topic: [Controlling the Projected Display](#)

Related references



[Toolbar](#)

[Projection Control Screen](#)


Operating the Projected Display Status

You can control the projected display while projecting your computer screen by starting, stopping, or pausing the projected image.

Perform one of the following operations on the toolbar or the projection control screen.

- **Show:** Click the  button.
The computer screen is projected as it is.
- **Stop:** Click the  button.

The projected image stops. A black screen is projected while stopped.

- **Pause:** Click the  button.

The projected image pauses. The paused image is projected, even if you make changes on the computer screen.

Note:

- These buttons are not available for participants when using the moderator function.
- The moderator can also control the other users' projection using the projection control screen when using the moderator function.

Parent topic: [Controlling the Projected Display](#)


Related references

[Projection Control Screen](#)

Changing the Number of Projected Panels

You can divide the projected display into a maximum of four panels. By changing the number of panels, you can project screens from multiple devices at the same time, or project one computer screen in full screen mode.

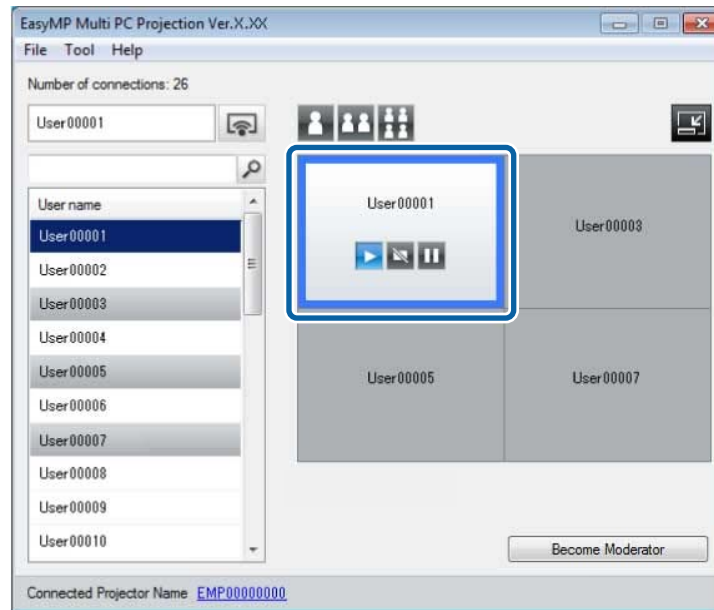
Note:

- This function is not available for participants when using the moderator function.
- You can also use the  button to project your computer screen in full screen mode.




1. Click the  button on the toolbar.

The projection control screen is displayed.

2. Click the panel of the user to be projected in the projection area.



The selected panel is framed in blue.

3. Perform one of the following operations to change the number of available panels in the projection area.
 - Project one panel in full screen mode: Click the  button.
 - Split the projected display in two and projecting the selected panel and the adjacent right or left panel: Click the  button.
 - Split the projected display in four and projecting the all four panels: Click the  button.

The number of panels changes and the background color for panels being projected becomes white.

Note:

- You can also change the number of panels by right-clicking in the projection area. Right-click the panel, and then select the number of total panels.
- If there is no user in a white panel, a black screen is projected.

- The background color for panels not being projected is gray.

Parent topic: [Controlling the Projected Display](#)


Related references

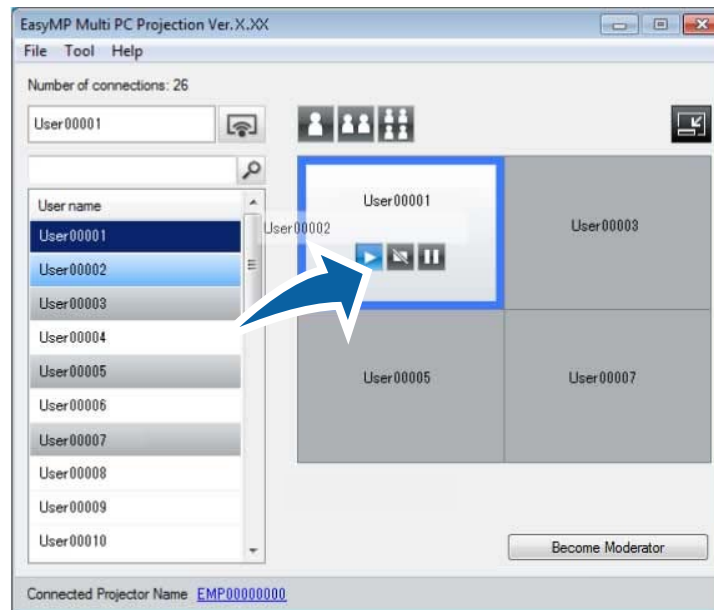
[Projection Control Screen](#)

Changing the Presenter

You can change the presenter by dragging and dropping one of the connected user names in the list onto a panel in the projection area.

Note: This function is not available for participants when using the moderator function.

1. Click the  button on the toolbar.
The projection control screen is displayed.
2. Select the user names in the user list, and then drag and drop the user name onto a white panel in the projection area.



Note:

- If you cannot find the user that you want to project in the user list, you can search for them using the user search box.
- You can also right-click a user name in the user list to select the projection position.
- If there is no user in a white panel, a black screen is projected.

The selected user's computer screen is projected.

3. To finish projecting, drag and drop the user name from the projection area to the user list.

Note: You can also finish the selected user's projection by right-clicking the panel in the projection area, and then clicking **End Projection**.

The background color of the user name in the user list is blue while their screen is projected. The background color of the user name is gray when a user is in the panel but their screen is not being projected.

Parent topic: [Controlling the Projected Display](#)

Related tasks

[Changing the Projection Position](#)

Changing the Projection Position

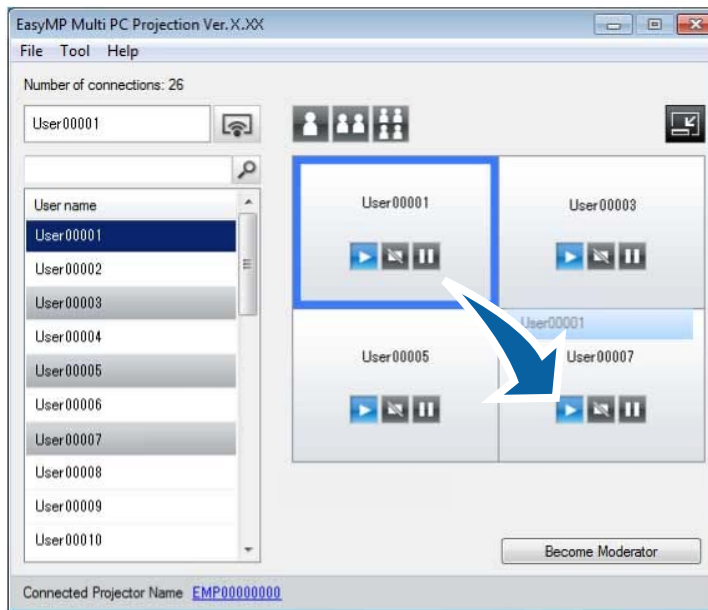
You can change the projection position by dragging and dropping the user name from one position to another in the projection area.

Note: This function is not available for participants when using the moderator function.



1. Click the  button on the toolbar.

The projection control screen is displayed.

2. Select the user in the projection area, and then drag and drop the user name into another position.



The projection position is changed.

Note: When the  or  button is selected, you can drag and drop the user name in a gray panel to the white panel to switch the image being projected. If you drag and drop the user name in a white panel to the gray panel, the image for that user will not be projected.

Parent topic: [Controlling the Projected Display](#)

Related tasks

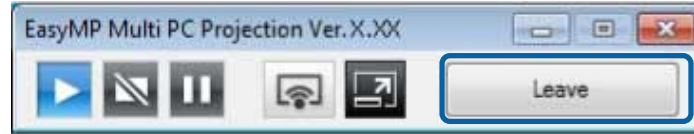
[Changing the Number of Projected Panels](#)

Disconnecting


You can disconnect one computer or all devices from the projector when you finish projecting.

1. Perform one of the following operations.
 - Disconnect your computer and the projectors: Click the **Leave** button on the toolbar.

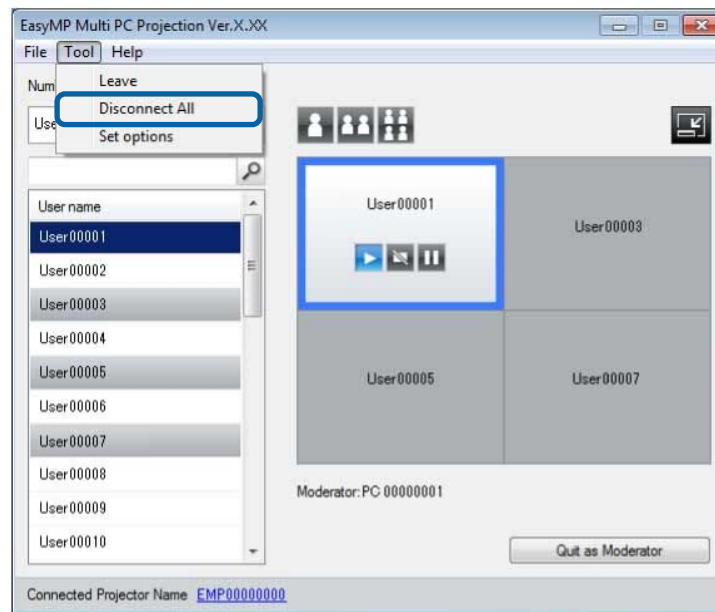
The connection between your computer and the projectors is ended.



Note:

- When you are the moderator, the **Disconnect All** button is displayed on the toolbar instead of this button.
- You can also disconnect by clicking **Leave** from the **Tool** menu on the projection control screen.
- The moderator can disconnect other participants by right-clicking the selected user in the user list, and then clicking **Leave** on the projection control screen when using the moderator function.
- When the moderator leaves the meeting, the moderator function turns off.
- Disconnect all devices from the projectors: Click the  button on the toolbar, and then click **Disconnect All** from the **Tool** menu on the projection control screen.

The connection between all devices and projectors participating in the meeting is ended.



Note: This function is not available for participants when using the moderator function.

The confirmation screen is displayed.

2. Click **OK**.

You are returned to the search screen.

Parent topic: [Connecting to the Projector and Projecting Images](#)

Using Additional Functions

Follow these instructions to use additional EasyMP Multi PC Projection functions that may be useful during a meeting.

[Searching for Network Projectors Using a Shortcut](#)

[Connecting to Multiple Projectors \(Mirroring\)](#)

[Outputting Audio from the Projector](#)

[Projecting Your Screen](#)

[Changing the Moderator](#)

[Hiding the Projection Control Screen](#)

Related topics

[Connection Methods](#)

[Selecting the Projector Search Method](#)

Searching for Network Projectors Using a Shortcut

You can save network projector information as a shortcut, and then double-click it to start EasyMP Multi PC Projection. This allows you to easily search for the same projectors instead of specifying the projector details each time.

[Creating a Shortcut](#)

Parent topic: [Using Additional Functions](#)

Creating a Shortcut

After searching for a projector, you can save the projector details as a shortcut that you can use later. A shortcut contains all of the projector's information, such as the projector name and IP address. Creating a folder shortcut saves information for multiple projectors contained in the folder.

1. On the search screen, right-click the projector or folder from the **Profile** or **Projector List**, and then click **Create Shortcut**.

The **Save As** screen is displayed.

2. Select where you want to save the shortcut (.pme), and then click **Save**.

The shortcut is created and the projector information is saved in the shortcut.

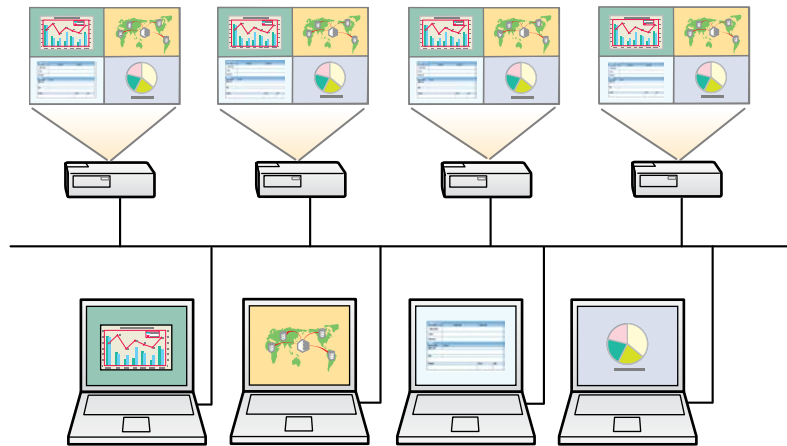
Note:

- You can start EasyMP Multi PC Projection by double-clicking the shortcut file (.pme). The saved projectors are automatically searched for and the results are displayed on the search screen.
- You can also select the projector or folder from the **Profile** or **Projector List**, and then drag and drop to the location where you want to create the shortcut.

Parent topic: [Searching for Network Projectors Using a Shortcut](#)

Connecting to Multiple Projectors (Mirroring)

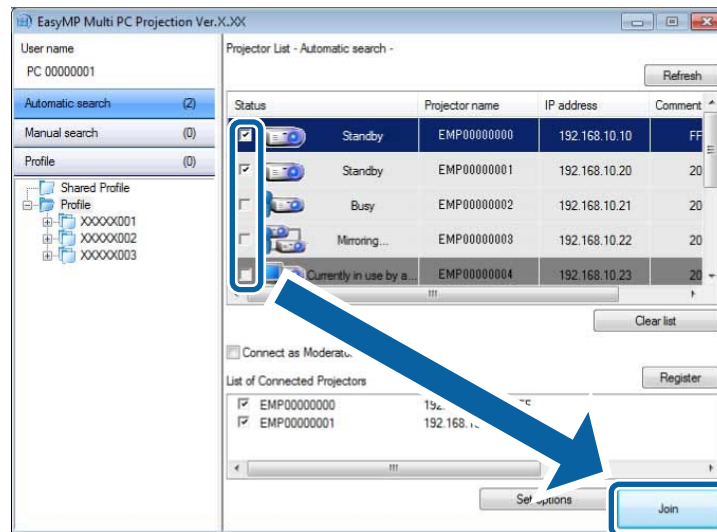
Connecting to multiple projectors and projecting the same image is known as mirroring. You can perform mirroring with up to four projectors.



Note:

- You cannot perform mirroring with projectors that are not compatible with EasyMP Multi PC Projection.
- For best results, we recommend that you connect the projector to a wired LAN to perform mirroring.

On the search screen, select up to four projectors you want to connect to, and then click **Join**.



A projector mirroring group is formed and the same image is projected from multiple projectors.

Note:

- When you select one projector from a projector mirroring group, all of the projectors in that group are selected.
- When other users are already connected to a projector in a mirroring group, you can only select another projector from the same mirroring group. You cannot select a projector that is not in a mirroring group.

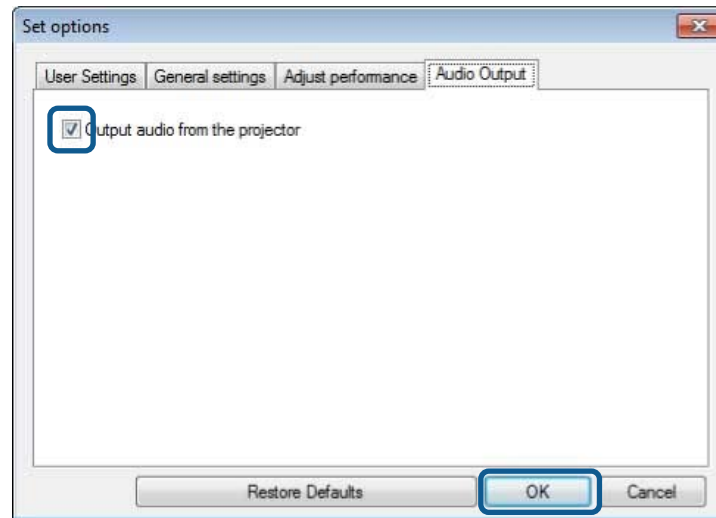
Parent topic: [Using Additional Functions](#)

Outputting Audio from the Projector

You can output audio from the projector only when one computer is connected to one projector, and you are projecting in full screen mode.

1. Click **Set options** on the search screen.
The **Set options** screen is displayed.

2. Click the **Audio Output** tab.
3. Select **Output audio from the projector**, and then click **OK**.



The **Set options** screen closes.

Parent topic: [Using Additional Functions](#)

Related tasks

[Projecting Your Screen](#)

Projecting Your Screen


You can project the computer screen in full screen mode without projecting any other users' screens.

1. On the search screen, select the projector you want to connect to, and then click **Join**.

The toolbar is displayed.

2. Click the  button.

Note:

- You can also use the  button on the projection control screen.
- This button is not available for participants when using the moderator function.

Your computer screen is projected in full screen mode.

Parent topic: [Using Additional Functions](#)

Changing the Moderator

While using the moderator function, you can change the moderator when another user needs to control the projected display.

Note: The moderator function may not be available on all versions of this software.

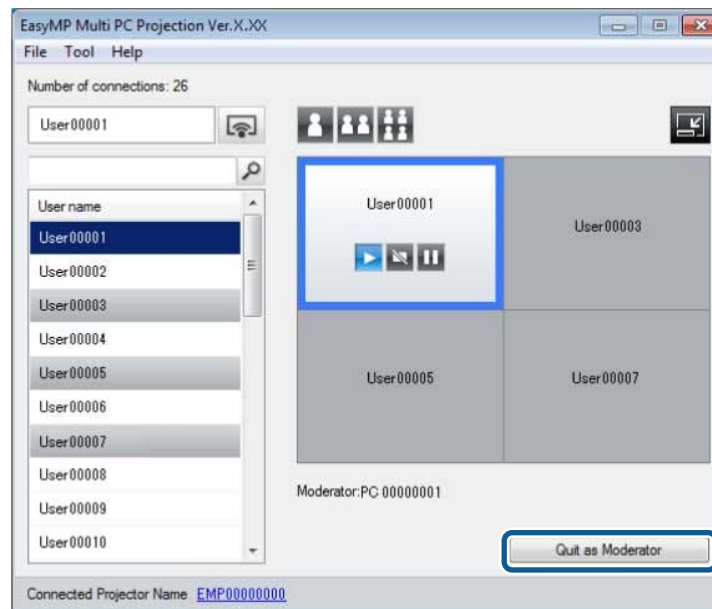
1. On the search screen, select the projector you want to connect to, select **Connect as Moderator**, and then click **Join**.

The moderator function turns on and the toolbar is displayed.

2. Click the  button on the toolbar.

The projection control screen is displayed.

3. Click the **Quit as Moderator** button on the moderator's computer.

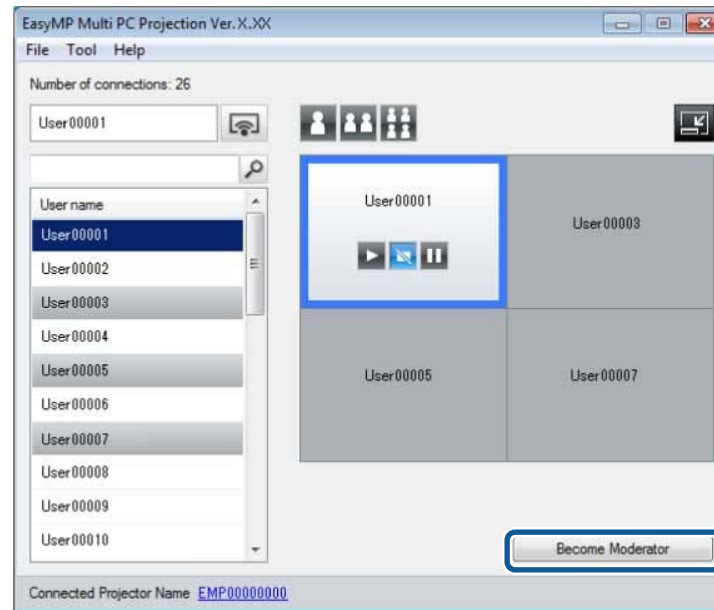


The confirmation screen is displayed.

4. Click **OK**.

The moderator function turns off.

5. Click the **Become Moderator** button on the projection control screen on a different user's computer.



The confirmation screen is displayed.

6. Click **OK**.

The moderator function turns back on and the new moderator can control the projected display.

Parent topic: [Using Additional Functions](#)

Related concepts

[Connection Methods for Various Meeting Styles](#)

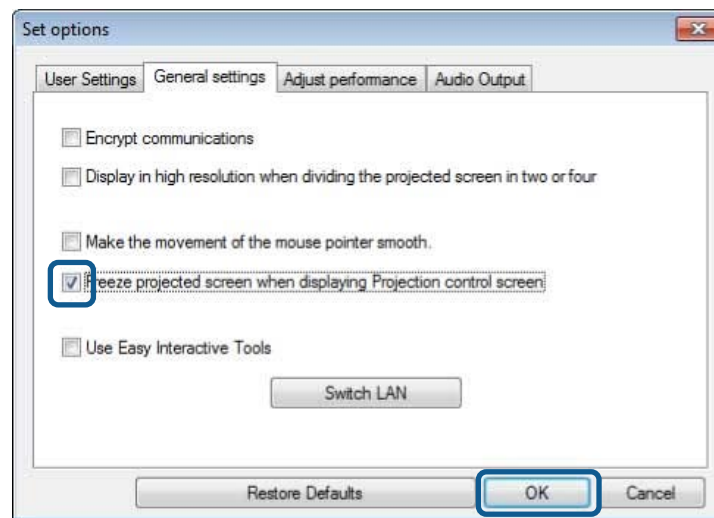
Hiding the Projection Control Screen

You can hide the projection control screen from other users while projecting your computer screen. This allows you to change the necessary settings without projecting the operation. The projected image

currently displayed is paused automatically when you switch the toolbar to the projection control screen. Your computer screen is projected again when you return to the toolbar.

Note: This function is available only for the moderator when using the moderator function.

1. Click **Set options** on the search screen.
The **Set options** screen is displayed.
2. Click the **General settings** tab.
3. Select **Freeze projected screen when displaying Projection control screen**, and then click **OK**.



The **Set options** screen closes. The operation on the projector control screen will not be projected next time you use it.

Parent topic: [Using Additional Functions](#)

Solving Problems

See the following sections to check for solutions to problems you may have using EasyMP Multi PC Projection.

[Solving Network Connection Problems](#)

[Solving Problems During Projection](#)

[Error Messages List](#)

[Event ID List](#)

Solving Network Connection Problems

Try these solutions depending on your network environment.

[Solutions When You Cannot Connect Projectors \(Wireless\)](#)

[Solutions When You Cannot Connect Projectors \(Wired\)](#)

Parent topic: [Solving Problems](#)

Solutions When You Cannot Connect Projectors (Wireless)

When you cannot connect the computer and the projector over a wireless network, try the following solutions. If you cannot resolve the problem, contact your network administrator.

- Check the status of the external devices used for the network connection or the environment in which the network devices and the projector are located.
 - Connect the specified wireless LAN unit to the projector securely.
 - Check for any obstacles between the access point and the computer or projector, and change their position to improve communication. Sometimes, indoor environments prevent the projector from being found in a search.
 - Make sure that the access point and the computer or projector are not too far apart. Move them closer together and try to connect again.
 - If the wireless connection is slow or your projected image contains noise, check for interference from other equipment, such as a Bluetooth device or microwave. Move the interfering device farther away or expand your wireless bandwidth.
 - Set the radio strength for the network devices to the maximum.
 - Set the IP address, the subnet mask, and the gateway address for the access point correctly.

- Make sure the wireless LAN system of the access point supports the projector's wireless LAN system.
- Check the projector's network settings.
 - Set the **Connection Mode** setting to **Advanced**.
 - Set the computer, the access point, and the projector to the same SSID.
 - Set **DHCP** to **Off**. When **DHCP** is set to **On**, it may take some time to enter LAN standby status if an available DHCP server is not found.
 - Set the IP address, the subnet mask, and the gateway address for the projector correctly.
 - Set **Wireless LAN Power** to **On**, or **Wireless Mode** to **Wireless LAN On**.
 - Set the wireless LAN system to meet the standards supported by the access point.
 - When you enable the security setting, set the same passphrase to the access point, the computer, and the projector.
 - Close network settings on the projector, and then return to the LAN standby screen.
- Check the computer's network settings.
 - If the wireless LAN adapter is not installed on your computer, install a wireless LAN card on your computer.
 - Enable the wireless LAN setting or AirPort on your computer.
 - Connect to the access point to which the projector is connected.
 - Turn off the firewall. If you do not want to turn it off, register the firewall as an exception. Make the necessary settings to open the ports. The ports used by this software are "3620", "3621", and "3629".
- Check the access point settings.
 - Set connection permission at the access point to allow projectors to connect if any functions that block connections, such as MAC Address restrictions and port restrictions, are set to the access point.
- Check the software settings.
 - Select the network adapter you are using from **Switch LAN** on the **Set options** screen. If the computer has multiple LAN environments, a connection cannot be established unless the network adapter is selected correctly.
 - If you cannot find the projector you want to connect to using **Automatic search**, select **Manual search** to specify the IP address.

- Make sure the projector supports the EasyMP Multi PC Projection version being used. Install EasyMP Multi PC Projection from the EPSON Projector Software CD-ROM supplied with the projector (if available) or download it from the Epson Web site.
- Install the latest version of EasyMP Multi PC Projection on all computers. The maximum number of computer connections and the availability of the moderator function varies depending on the projector model, no matter which version of EasyMP Multi PC Projection you are using.
- When another user is already connected, you can only connect to projectors in the same mirroring group as that selected by the other user. Select a projector from the same mirroring group as the user who is already connected, or select a projector that is in standby status.

Parent topic: [Solving Network Connection Problems](#)

Related references

[Set options - General settings](#)

Related tasks

[Searching for Network Projectors by Specifying an IP Address or Projector Name](#)

Solutions When You Cannot Connect Projectors (Wired)

When you cannot connect the computer and the projector over a wired network, try the following solutions. If you cannot resolve the problem, contact your network administrator.

- Check the status of the external devices used for the network connection or the environment in which the network devices and the projector are located.
 - Connect the network cable securely.

Note:

- Use a commercially available 100BASE-TX or 10BASE-T LAN cable.
- To prevent malfunctions, use a category 5 or higher shielded LAN cable.
- Check the projector's network settings.
 - Set **DHCP** to **Off**. When **DHCP** is set to **On**, it may take some time to enter LAN standby status if an available DHCP server is not found.
 - Set the IP address, the subnet mask, and the gateway address for the projector correctly.
 - Close network settings on the projector, and then return to the LAN standby screen.
- Check the computer's network settings.
 - Enable LAN settings on your computer.

Windows XP: Check **Control Panel > System > Hardware > Device Manager**.

Windows Vista: Check **Control Panel > System and Maintenance > Device Manager**.

Windows 7, Windows 8, and Windows 8.1: Check **Control Panel > Hardware and Sound > Device Manager**.

- Turn off the firewall. If you do not want to turn it off, register the firewall as an exception. Make the necessary settings to open the ports. The ports used by this software are "3620", "3621", and "3629".
- Check the software settings.
 - Select the network adapter you are using from **Switch LAN** on the **Set options** screen. If the computer has multiple LAN environments, a connection cannot be established unless the network adapter is selected correctly.
 - If you cannot find the projector you want to connect to using **Automatic search**, select **Manual search** to specify the IP address.
 - Make sure the projector supports the EasyMP Multi PC Projection version being used. Install EasyMP Multi PC Projection from the EPSON Projector Software CD-ROM supplied with the projector (if available) or download it from the Epson Web site.
 - Install the latest version of EasyMP Multi PC Projection on all computers. The maximum number of computer connections and the availability of the moderator function varies depending on the projector model, no matter which version of EasyMP Multi PC Projection you are using.
 - When another user is already connected, you can only connect to projectors in the same mirroring group as that selected by the other user. Select a projector from the same mirroring group as the user who is already connected, or select a projector that is in standby status.

Parent topic: [Solving Network Connection Problems](#)

Related references

[Set options - General settings](#)

Related tasks

[Searching for Network Projectors by Specifying an IP Address or Projector Name](#)

Solving Problems During Projection

Try these solutions depending on your situation.

[Solutions When the Computer Screen is Not Displayed Properly](#)

[Solutions When the Screen is Not Projected Properly](#)

[Solutions When Audio is Not Played Properly](#)

Parent topic: [Solving Problems](#)

Solutions When the Computer Screen is Not Displayed Properly

If there are any problems with the computer screen, try the following solutions.

- If you start EasyMP Multi PC Projection while PowerPoint is running, a slide show might not run. Make sure PowerPoint is closed and then start EasyMP Multi PC Projection and a slide show.

Parent topic: [Solving Problems During Projection](#)

Solutions When the Screen is Not Projected Properly

If the screen is not projected or there are problems with the project images try the following solutions.

- If you are using a Microsoft Office application, stop moving the mouse pointer. If you move the mouse pointer continuously, the screen may not be refreshed quickly.
- If the mouse pointer flickers, try the following solutions.
 - Select **Make the movement of the mouse pointer smooth** on the **General settings** tab on the **Set options** screen.
 - Clear **Transfer layered window** on the **Adjust performance** tab on the **Set options** screen.
- The Media Player movie playback screen may not be projected depending on the computer.
- The screen saver preview may not be projected properly depending on the computer.
- Reduce the number of connected devices if the connection speed declines.
- For Mac OS X, when playing back movies, start EasyMP Multi PC Projection first before starting playback. If EasyMP Multi PC Projection is started during movie playback and the display screen resolution and color numbers are changed, try moving the movie playback window, minimizing it, or resizing it and so on.
- When using a computer that does not meet the software requirements, images and audio for movies may stop.
- When another user is the moderator, you cannot control your projected display. Change the moderator or project the screen without a moderator.

Parent topic: [Solving Problems During Projection](#)

Related references

[Set options - General settings](#)

[Set options - Adjust performance](#)

Related tasks

[Changing the Moderator](#)

Solutions When Audio is Not Played Properly

If there is no audio coming from the projector, try the following solutions.

- Audio can only be transferred to one projector. When multiple projectors are connected to one computer, disconnect other projectors and try again.
- Select **Output audio from the projector** on the **Audio Output** tab on the **Set options** screen.
- You can only output the computer's audio from the projector when projecting one computer screen in full screen mode.
- If the volume for the computer is set to the minimum while the projector volume is set to the maximum, the noise may be mixed. Turn up the computer's volume and turn down the projector's volume.

Parent topic: [Solving Problems During Projection](#)

Related references

[Set options - Audio Output](#)

Error Messages List

When an error occurs, an error message is displayed on your computer screen. Check for your message and follow the instructions here to clear the error.

[Error Messages When Starting up EasyMP Multi PC Projection](#)

[Error Messages When Searching for and Selecting Projectors](#)

[Error Messages When Projecting](#)

[Error Messages When Operating a Profile](#)

[Error Messages When Using the Moderator Function](#)

Parent topic: [Solving Problems](#)

Error Messages When Starting up EasyMP Multi PC Projection

Error Messages	Remedy
This application is already running.	Two instances of EasyMP Multi PC Projection have been started.

Error Messages	Remedy
Cannot start this application because other EPSON Projector software (Quick Wireless Connection) is already running.	<p>Close Quick Wireless Connection and then start EasyMP Multi PC Projection.</p> <p>To close Quick Wireless Connection, perform Safely Remove Hardware from the icon on the task bar to remove the Quick Wireless Connection USB Key from the computer.</p>
Cannot start this application because other EPSON Projector software (USB Display) is already running.	<p>Close USB Display and then start EasyMP Multi PC Projection.</p> <p>Do one of the following to close USB Display:</p> <ul style="list-style-type: none"> • Windows: Disconnect the USB cable from the projector. • Mac OS X: Select Disconnect from the USB Display icon menu on the menu bar or Dock, and then remove the USB cable.
Cannot start this application because other EPSON Projector software (EasyMP Network Projection) is already running.	Close EasyMP Network Projection and then start EasyMP Multi PC Projection.
EasyMP Multi PC Projection initialization failed.	Restart EasyMP Multi PC Projection. If the message is still displayed, uninstall and then reinstall EasyMP Multi PC Projection.
Cannot open the shortcut file.	The shortcut file may be corrupted. Start EasyMP Multi PC Projection, and then try searching for and connecting to the projector again.
Files are missing or invalid. Failed to start the application. Reinstall/remove the application.	Uninstall and then reinstall EasyMP Multi PC Projection.

Error Messages	Remedy
Network adapter information could not be obtained.	<p>Check the following items.</p> <ul style="list-style-type: none"> • A network adapter is installed on the computer. • The driver for the network adapter being used is installed on the computer. • The network adapter is enabled. <p>After checking, restart the computer and then restart EasyMP Multi PC Projection.</p> <p>If you still cannot connect, check the network settings on the computer and the network settings on the projector.</p>
Cannot start from the shortcut while projecting.	Stop projecting and then start projection from the shortcut. You cannot start projection from the shortcut when you are already projecting using EasyMP Multi PC Projection.
Cannot start from the shortcut while the Option screen is displayed. Close the Option screen, and then try opening the shortcut again.	The Set options screen is displayed. Close the Set options screen.
The slide show will not begin until PowerPoint is restarted.	Close PowerPoint, and then start the slide show again.
Cannot be used with the current OS version. Reinstall EasyMP Multi PC Projection.	Reinstall EasyMP Multi PC Projection.

Parent topic: [Error Messages List](#)

Related tasks

[Uninstalling EasyMP Multi PC Projection \(Windows XP/Windows Vista/Windows 7\)](#)

[Uninstalling EasyMP Multi PC Projection \(Windows 8\)](#)

[Uninstalling EasyMP Multi PC Projection \(Mac OS X\)](#)

[Installing EasyMP Multi PC Projection \(Windows\)](#)

[Installing EasyMP Multi PC Projection \(Mac OS X\)](#)

Error Messages When Searching for and Selecting Projectors

Error Messages	Remedy
Cannot join. The maximum number of participants has been exceeded.	The maximum number of devices are already connected to the projector. Disconnect users and projectors that are not projecting screens.
The keyword does not match. Re-enter the keyword displayed on the projector screen.	Check the Projector Keyword displayed on the LAN standby screen, and enter the Projector Keyword.
Connection failed due to keyword mismatch.	
The selected projector is mirroring another projector.	When another user is already connected, you can only connect to the projectors in the same mirroring group as that selected by the other user. Select a projector from the same mirroring group, or select a projector that is in standby status.
One or more projectors are not responding.	You cannot connect to multiple projectors simultaneously. Check the network settings on the computer and the network settings on the projector.
A network error occurred.	Turn on your computer's wireless LAN, and then try searching for the projector again. If you still cannot connect to the projector, check the network settings on the computer and the network settings on the projector.
Connection to the projector failed.	Check if the projector you want to connect to is already connected to EasyMP Network Projection. You cannot connect to a projector that is already connected using EasyMP Network Projection.

Parent topic: [Error Messages List](#)

Related tasks

[Uninstalling EasyMP Multi PC Projection \(Windows XP/Windows Vista/Windows 7\)](#)

[Uninstalling EasyMP Multi PC Projection \(Windows 8\)](#)

[Uninstalling EasyMP Multi PC Projection \(Mac OS X\)](#)

[Getting the Latest Version of the Application](#)

[Installing EasyMP Multi PC Projection \(Windows\)](#)

[Installing EasyMP Multi PC Projection \(Mac OS X\)](#)

Related topics

[Supported Resolutions and Colors](#)

Error Messages When Projecting

Error Messages	Remedy
The projector has disconnected.	An error may have occurred in the projector. Check the projector's indicator lights.
A network error occurred.	Try connecting again. If you still cannot connect to the projector, check the network settings on the computer and the network settings on the projector.

Parent topic: [Error Messages List](#)

Error Messages When Operating a Profile

Error Messages	Remedy
Enter max. 32 characters.	The entered text exceeds 32 characters. Shorten the name to 32 characters or less.
Enter a folder name.	No folder name entered. Enter a folder name.
Folders should not be created more than 6 layers deep.	The folder structure is deeper than six folders. Create the new folder higher up in the folder structure.
There is already a folder named XXX in this folder.	A folder with the same name already exists. Enter another folder name.
There is already a file named XXX in this folder.	A projector with the same name already exists. Enter another projector name.

Error Messages	Remedy
Cannot import. Format not supported by this application.	Check the profile you want to import. You cannot import a profile for projectors connected using Quick Connection Mode in EasyMP Network Projection. Also, you cannot import a profile when projector information has not been registered, or when the profile is corrupt.
Cannot import because the folder structure exceeds six folders.	The folder structure cannot exceed six layers. Import, move, or copy to a folder higher up in the folder structure.
Cannot move because the folder structure exceeds six folders.	
Cannot copy because the folder structure exceeds six folders.	
Failed to open the file.	The profile may be corrupted. Try importing the profile again.
Failed to save the file.	Make sure you have access rights to the folder, and then try again.

Parent topic: [Error Messages List](#)

Error Messages When Using the Moderator Function

Error Messages	Remedy
Cannot switch to moderator.	You cannot become the moderator when another user is the moderator. Ask the current moderator to quit, and then try again.
Failed to switch to Moderator Mode	Make sure another user is not the moderator, and then try again.
The moderator function is not available. You have been connected as a participant.	The projector you are connecting to does not support the moderator function. To become the moderator, change to a projector that supports the moderator function.

Parent topic: [Error Messages List](#)

Related tasks

[Changing the Moderator](#)

Event ID List

When a connection error occurs, a number indicating the type of error is displayed as follows.

Event ID: 04xx

Check the numbers and then apply the following countermeasures. If you cannot resolve the problem, contact your network administrator, or contact Epson as described in your projector *User's Guide*.

Event ID	Cause	Remedy
0432	Failed to startup the network software.	Restart the projector.
0435		
0434	Network communication is unstable.	Check the network communication status, and reconnect after waiting for a while.
0481		
0482		
0433	Cannot play transferred images.	Restart the network software.
0484	Communication was disconnected from the computer.	
04FE	The network software ended unexpectedly.	Check the status of network communications. Restart the projector.
04FF	A system error occurred in the projector.	Restart the projector.
0891	Cannot find an access point with the same SSID.	Set the computer, the access point, and the projector to the same SSID.
0892	The WPA/WPA2 authentication type does not match.	Check that the wireless LAN security settings are correct.
0893	The WEP/TKIP/AES encryption type does not match.	
0894	Communication was disconnected because the projector connected to an unauthorized access point.	Contact your network administrator for more information.

Event ID	Cause	Remedy
0898	Failed to acquire DHCP.	Check the DHCP server to see if it is operating correctly and check the LAN cable to see if it is connected correctly. If you are not using DHCP, set DHCP to Off .
0899	Other communication errors	If restarting the projector or the network software does not solve the problem, contact Epson as described in your projector <i>User's Guide</i> .
089A	The EAP authentication type is not the same.	Check that the wireless LAN security settings are correct. Also, check if the certificate is installed correctly.
089B	EAP server authentication failed.	
089C	EAP client authentication failed.	
089D	Key exchange failed.	
0B01	The built-in storage could not be detected correctly.	Perform Delete All Internal Data . When the internal storage is deleted correctly, plugin the power cord for the projector and turn it on. If it is not deleted correctly, contact Epson as described in your projector <i>User's Guide</i> . Go to Extended > Whiteboard Settings > Internal Storage .
0BFF	An error has occurred in the Whiteboard function.	Restart the projector.

Parent topic: [Solving Problems](#)

Screen Summary

See these sections for more information about the EasyMP Multi PC Projection screens.

[Search Screen](#)

[Save Screen](#)

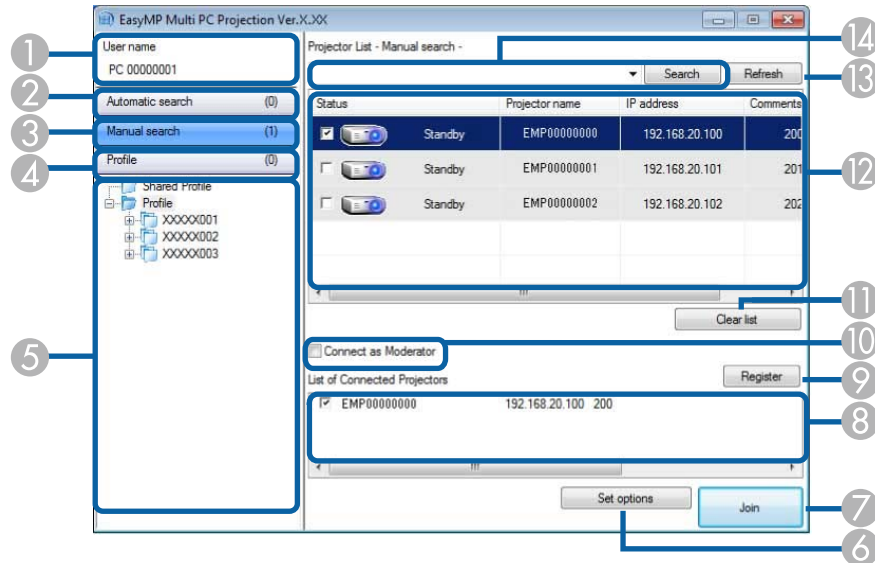
[Set options](#)

[Toolbar](#)

[Projection Control Screen](#)

Search Screen

When you start EasyMP Multi PC Projection, the search screen is displayed.










1	User name	Displays the user name displayed in the user list on the projection control screen. You can edit the user name on the User Settings tab on the Set options screen.
2	Automatic search	Searches for projectors on the network to which the computer is connected.

3	Manual search	Searches for projectors on the network by specifying the projector's IP address or projector name.
4	Profile	Searches for projectors on the network by using the projector information saved previously.
5	Profile list	Displays the registered profiles (projector information). When you double-click the profile, the projectors registered in the profile are searched for on the network.
6	Set options	Displays the Set options screen.
7	Join	Connects to the selected projectors.
8	List of Connected Projectors	Displays information on the projectors selected from the Projector List . Even if the search method is changed, the content of the List of Connected Projectors remains the same.
9	Register	Registers the projectors from the List of Connected Projectors to a profile.
10	Connect as Moderator	Connects to the selected projectors as the moderator (supported models only). The moderator function may not be available on all versions of this software.
11	Clear list	Clears information displayed in the Projector List and the List of Connected Projectors .
12	Projector List	Displays a list of the projectors found on the network. You can then select projectors to connect to. The search results for each search method (Automatic search , Manual search , and Profile) are displayed in separate lists.
		Status See the description of projector status icons in the next table.
		Projector name Displays the projector's name.
		IP address Displays the projector's IP address.
		Comments Displays comments for the projector. You can edit the comment by right-clicking the profile, and then clicking Property . You can enter up to 32 characters.
13	Refresh	Updates information in the Projector List .

14	Manual search box	When using Manual search , enter the projector's IP address or the projector name. Click the Search button to search for the specified projector.
----	-------------------	---

Projector status icons in the **Projector List** are described in the following table.

 Standby	Available. You can connect to the projector.
 Busy	Available. Although other computers are connected to the projector, you can also connect at the same time.
 Mirroring...	Available. You can connect to a group of projectors that are projecting the same image (mirroring).
 Currently in use by another application	Not available. The projector is displaying the network configuration screen or is being used by other projector software.
 Searching	Not available. A Manual search or Profile search is already being used to search for the projector.
 Not found.	Not available. The specified projector could not be found using Manual search or Profile search.
 Unsupported Projectors	Not available. The projector is not compatible with EasyMP Multi PC Projection.

Parent topic: [Screen Summary](#)

Related tasks

[Searching for Network Projectors Automatically](#)

[Searching for Network Projectors by Specifying an IP Address or Projector Name](#)

Related topics

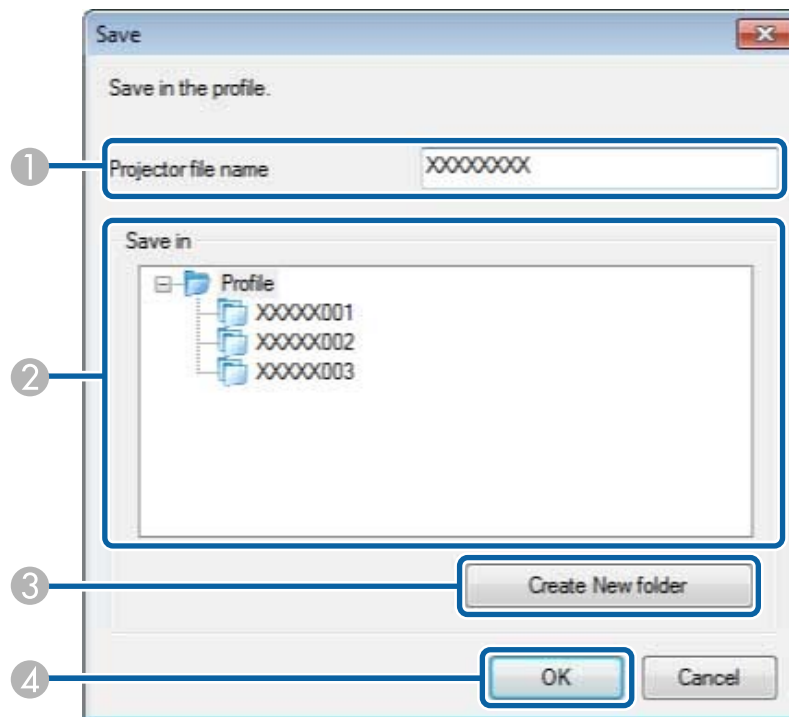
[Searching for Network Projectors Using a Profile](#)

[Searching for Network Projectors Using a Shortcut](#)

[Set options](#)

Save Screen

When you search for projectors and save information as a profile on the search screen, the **Save** screen is displayed.



1	Projector file name	Enter the projector file name.
---	----------------------------	--------------------------------

2	Save in	Select the folder where you want to save the profile.
3	Create New folder	Creates a new folder.
4	OK	Registers the projector information in the profile.

Parent topic: [Screen Summary](#)

Related tasks

[Registering a Profile](#)

Set options

When you click **Set options** on the EasyMP Multi PC Projection search screen, the **Set options** screen is displayed.

Note: You can also access **Set options** from the **Tool** menu on the projection control screen. When you access **Set options** from the projection control screen, the **User Settings** tab is not displayed.

[Set options - User Settings](#)

[Set options - General settings](#)

[Set options - Adjust performance](#)

[Set options - Audio Output](#)

Parent topic: [Screen Summary](#)

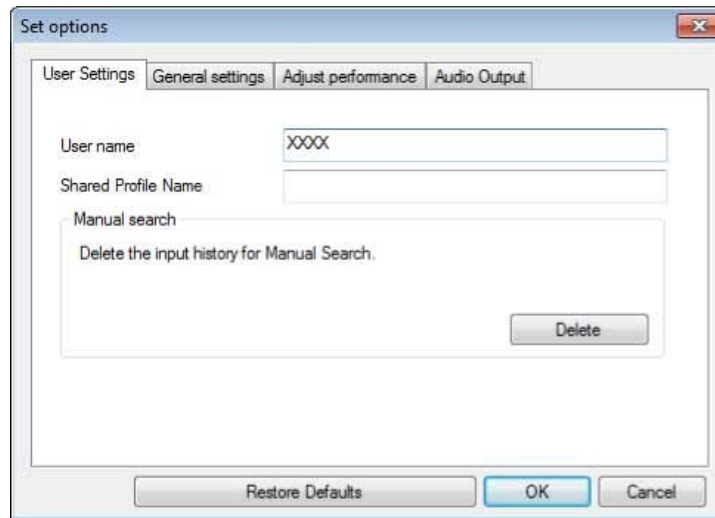
Related references

[Search Screen](#)

[Toolbar](#)

Set options - User Settings

When you click the **User Settings** tab on the **Set options** screen, the following screen is displayed.



User name	Enter the user name displayed in the user list on the projection control screen. You can enter up to 32 characters. This setting is synchronized with the setting on the search screen.
Shared Profile Name	Enter the network location or URL of the shared profile (including the name of the profile) as shown below. <ul style="list-style-type: none">• For a file server (Windows only): \\xxxxx\xxxxx.mplist• For a web server: http://xxxxx/xxxxx.mplist
Delete	Deletes the input history for Manual search .
Restore Defaults	Resets all adjustment values for Set options to their default settings, except for Switch LAN in General settings .

Parent topic: [Set options](#)

Related references

[Search Screen](#)

[Projection Control Screen](#)

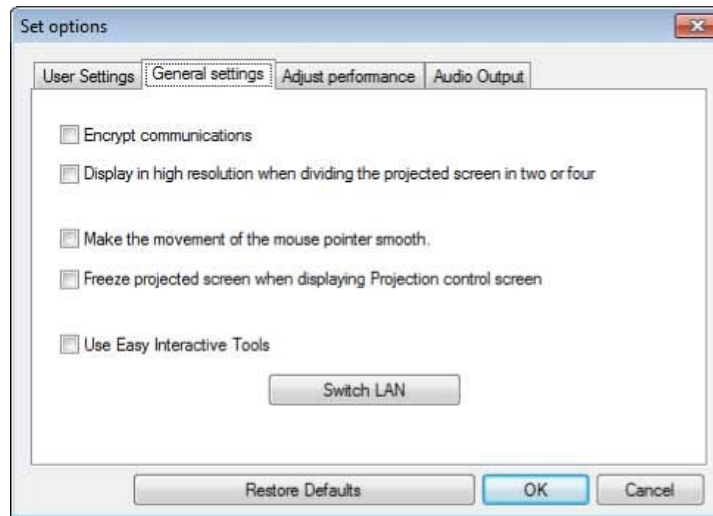
Related tasks

[Searching for Network Projectors Automatically](#)

[Sharing a Profile over a Network](#)

Set options - General settings

When you click the **General settings** tab on the **Set options** screen, the following screen is displayed.



Encrypt communications	Select to encrypt and transmit data. Even if data is intercepted, it cannot be decrypted.
Display in high resolution when dividing the projected screen in two or four	Available only for projectors with a resolution of WUXGA (1920 × 1200). Select to display all divided screens in high resolution. Clear this setting if displaying the image takes too long or is interrupted.

Make the movement of the mouse pointer smooth	Windows XP/Windows Vista/Windows 7 only Select to prevent the mouse pointer from flickering when Transfer layered window is selected in Adjust performance . (If Windows Aero is selected as the theme for Windows Vista and Windows 7, this setting turns off Windows Aero.)
Freeze projected screen when displaying Projection control screen	Available only for the moderator when using the moderator function. Select to hide the operations on the projection control screen from other users while projecting your computer screen.
Use Easy Interactive Tools	Select to use Easy Interactive Tools with EasyMP Multi PC Projection. This setting is synchronized with Transfer layered window in Adjust performance .
Switch LAN	Windows only Use this setting if you need to switch the network adapter used to perform a search when a computer has multiple adapters. By default, all of the network adapters are used to perform a search.
Restore Defaults	Resets all adjustment values for Set options to their default settings, except for Switch LAN in General settings .

Parent topic: [Set options](#)

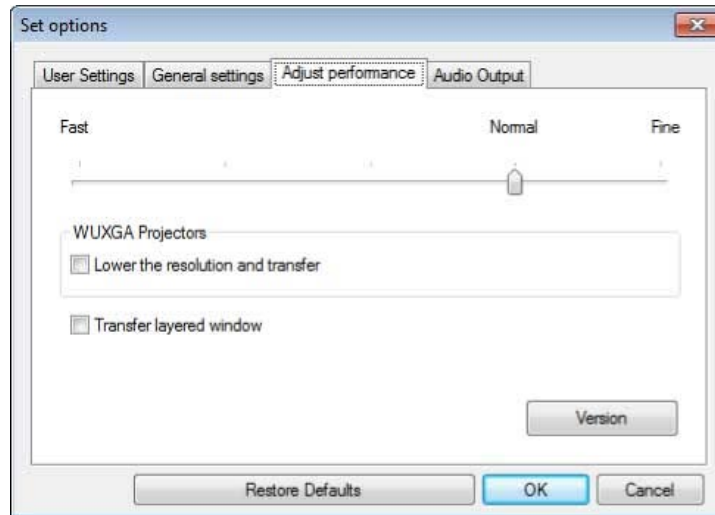
Related tasks

[Changing the Number of Projected Panels](#)

[Hiding the Projection Control Screen](#)

Set options - Adjust performance

When you click the **Adjust performance** tab on the **Set options** screen, the following screen is displayed.



Performance adjustment slider	You can set the performance to Fast , Normal , and Fine . Set to Fast if movie projections are interrupted.
Lower the resolution and transfer	Available only for projectors with a resolution of WUXGA (1920 × 1200). Select to reduce the size of the data to be transferred to the projector by lowering the resolution. Use this option on a slow network or if it takes too long to display the image or projection is interrupted.
Transfer layered window	Windows XP and Windows 7 (when Windows 7 Basic is selected as the theme) only When using a layered window, contents such as messages displayed on the computer are not projected by the projector. Select this to project contents from a different layered window. If the mouse pointer flickers on the screen, select Make the movement of the mouse pointer smooth in General settings .

Version	Displays EasyMP Multi PC Projection version information.
Restore Defaults	Resets all adjustment values for Set options to their default settings, except for Switch LAN in General settings .

Parent topic: [Set options](#)

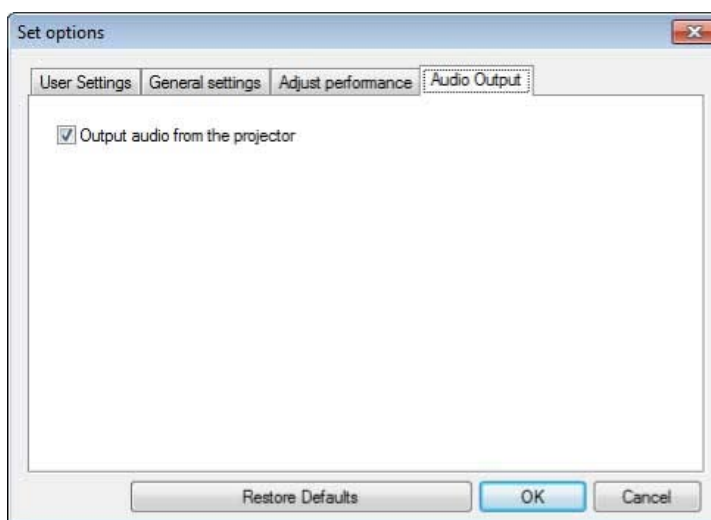
Related tasks

[Changing the Number of Projected Panels](#)

[Projecting Your Screen](#)

Set options - Audio Output

When you click the **Audio Output** tab on the **Set options** screen, the following screen is displayed.



Output audio from the projector	Select to output the computer's audio from the projector. Clear to output audio from the computer. Note: You can only output the computer's audio from the projector when projecting one computer screen in full screen mode.
Restore Defaults	Resets all adjustment values for Set options to their default settings, except for Switch LAN in General settings .

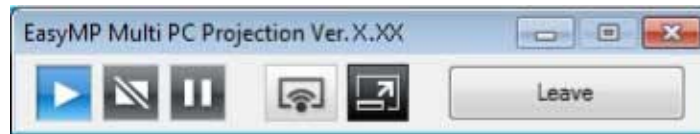
Parent topic: [Set options](#)

Related tasks

[Outputting Audio from the Projector](#)

Toolbar

After EasyMP Multi PC Projection starts and a connection is made with the projector, the toolbar is displayed on the computer screen. You can use this toolbar to control the projected image and to disconnect the network connection.



When using the moderator function, one of the following toolbars is displayed depending on your role of the session.






- For the moderator



- For the participants



Note: Some items may not be displayed on all version of this software.

 Show	Releases Stop or Pause and projects the computer screen as it is.
 Stop	Stops projection while connected to the projector. A black screen is projected while stopped.
 Pause	Pauses projected images while connecting to the projector.
 Project My Screen	Projects the screen from your computer in full screen mode without projecting any other users' screens.
Leave	Disconnects the connection between your computer and the projectors.
Disconnect All	Disconnects the connection between all devices and projectors participating in the meeting.
 Switch to Projection control screen	Switches to the projection control screen.

Parent topic: [Screen Summary](#)

Related references

[Projection Control Screen](#)


Related tasks

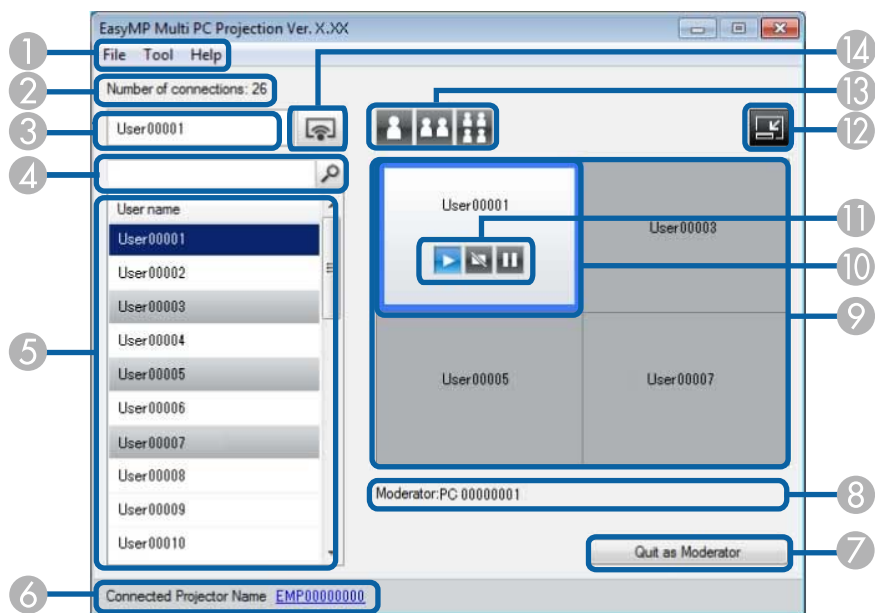
[Operating the Projected Display Status](#)

[Projecting Your Screen](#)

[Disconnecting](#)



Projection Control Screen









When you click the  button on the toolbar, the projection control screen is displayed.



Note: The projection control screen may not be available on all versions of this software.

1	File menu	Click to select Exit to close the software.
	Tool menu	Click to select Leave or Disconnect All . Click to select Set options to display the Set options screen.
	Help menu	Click to select Version information .
2	Number of connections	Displays the number of users connected to the projector.
3	User information	Displays your name and status. Displayed in blue when your computer screen is being projected. Displayed in gray when you are in the projection area but not projecting.

4	User search box	<p>Enter the user name you want to search for, and then click the  button. The search results are displayed in the user list.</p> <p>Click the  button to return to the original user list.</p>
5	User list	<p>Displays the user names for the computers connected to the projectors. You can connect up to 50 devices between computers that are running EasyMP Multi PC Projection and smartphones or tablets that are running Epson iProjection.</p> <p>When you drag and drop a user name to a white panel in the projection area, the computer screen is projected. The background for users that are currently being projected is blue and users that are in the projection area but not currently projecting is gray. Even if a user left the session, their name remains in the user list and their text color is gray.</p> <p>The default setting for the user name is the computer name. You can change the user name on the User Settings tab on the Set option screen, or the search screen.</p>
6	Connected Projector Name	<p>Displays the name of the projector you are currently connected to.</p> <p>When you click the projector name, Web Remote is displayed. In Web Remote, you can make projector operations on your computer screen in the same way as using the remote control. See the <i>User's Guide</i> supplied with the projector for more details on Web Remote.</p>
7	Quit as Moderator/Become Moderator	Click the Quit as Moderator button to stop being the moderator, or the Become Moderator button to become the moderator. The displayed button varies depending on the connection method.
8	Moderator	Displays the moderator name when there is a moderator.
9	Projection area	When the background color for a panel is white, the computer screen for the user in that panel is projected. If there is no user in the white panel, a black screen is projected. By dragging and dropping the user name, you can change the screen being projected and the position at which the computer screen is projected.
10	Target panel	Move the target panel framed in blue by clicking on one of the panels in the projection area. You can project the computer screen where the target panel is positioned when you click one of the change projection buttons.

11	Screen control buttons	Indicates the following status of the projector.	
		 Show	Releases Stop or Pause and projects the computer screen as it is.
		 Stop	Stops projecting. Projects a black screen while it is stopped.
		 Pause	Pauses the computer screen currently displayed. The projected display does not change, even if you make changes on the computer screen.
12	 Switch to Toolbar	Switches to the toolbar.	
13	Change projection buttons	Changes the number of panels available for projecting computer screens.	
		 One Screen	Projects the screen from one device in full screen mode without dividing the projected display.
		 Two Screens	Projects the screens from up to two devices at the same time by dividing the projected display in two.
		 Four Screens	Projects the screens from up to four devices at the same time by dividing the projected display in four.
14	 Project My Screen	Projects your computer screen in full screen mode.	

Parent topic: [Screen Summary](#)

Related references

[Search Screen](#)

[Set options - User Settings](#)

[Toolbar](#)

Related tasks

[Disconnecting](#)

[Projecting Your Screen](#)

[Changing the Moderator](#)

[Hiding the Projection Control Screen](#)

Related topics

[Controlling the Projected Display](#)

Appendix

See these sections to learn more about EasyMP Multi PC Projection software.

[Updating and Uninstalling the Software](#)

[Supported Resolutions and Colors](#)

[Limitations](#)

[Notices](#)

Updating and Uninstalling the Software

Follow these instructions to update or uninstall EasyMP Multi PC Projection.

[Getting the Latest Version of the Application](#)

[Uninstalling EasyMP Multi PC Projection \(Windows XP/Windows Vista/Windows 7\)](#)

[Uninstalling EasyMP Multi PC Projection \(Windows 8\)](#)

[Uninstalling EasyMP Multi PC Projection \(Mac OS X\)](#)

Parent topic: [Appendix](#)

Getting the Latest Version of the Application


Updates to this software and this manual may be available for your product. To check for updates, visit epson.com/support (U.S) or epson.ca/support (Canada) and select your product.

Parent topic: [Updating and Uninstalling the Software](#)

Uninstalling EasyMP Multi PC Projection (Windows XP/Windows Vista/Windows 7)

For Windows XP, Windows Vista, and Windows 7, follow the instructions below to uninstall EasyMP Multi PC Projection.

Note: You need administrator authority to uninstall the software.

1. Turn on your computer.
2. Make sure all running applications are closed.
3. Click  **Start**, and then click **Control Panel**.
4. Do one of the following.
 - **Windows XP:** Double-click **Add or Remove Programs**.

- **Windows Vista** and **Windows 7**: Click **Uninstall a program** from the **Programs** category.
5. Select **EasyMP Multi PC Projection**, and then do one of the following.
 - **Windows XP**: Click **Change/Remove**.
 - **Windows Vista** and **Windows 7**: Click **Uninstall/Change**.
 6. Follow the on-screen instructions.

Parent topic: [Updating and Uninstalling the Software](#)

Uninstalling EasyMP Multi PC Projection (Windows 8)

For Windows 8 and Windows 8.1, follow the instructions below to uninstall EasyMP Multi PC Projection.

Note: You need administrator authority to uninstall the software.

1. Turn on your computer.
2. Make sure all running applications are closed.
3. Navigate to the **Apps** screen, and then right-click (press and hold) **EasyMP Multi PC Projection Ver.X.XX**.
4. Select **Uninstall** from the app bar.
5. Select **EasyMP Multi PC Projection**, and then select **Uninstall**.
6. Follow the on-screen instructions.

Parent topic: [Updating and Uninstalling the Software](#)

Uninstalling EasyMP Multi PC Projection (Mac OS X)

For Mac OS X, follow the instructions below to uninstall EasyMP Multi PC Projection.

1. Turn on your computer.
2. Make sure all running applications are closed.
3. Open the **Applications** folder.
4. Open the **EasyMP Multi PC Projection - Tools** folder, and then double-click **EasyMP Multi PC Projection Uninstaller.app**.
5. Follow the on-screen instructions.

Parent topic: [Updating and Uninstalling the Software](#)

Supported Resolutions and Colors

Check these sections for the computer screen resolutions and the number of colors that EasyMP Multi PC Projection can project.

[Supported Resolutions](#)

[Display Color](#)

Parent topic: [Appendix](#)

Supported Resolutions

The following computer screen resolutions can be projected. You cannot connect to a computer with a resolution greater than WUXGA.

- VGA (640 × 480)
- SVGA (800 × 600)
- XGA (1024 × 768)
- SXGA (1280 × 960)
- SXGA (1280 × 1024)
- SXGA+ (1400 × 1050)
- WXGA (1280 × 768)
- WXGA (1280 × 800)
- WXGA+ (1440 × 900)
- UXGA (1600 × 1200)
- WUXGA (1920 × 1200)

When using a computer screen with a unique aspect ratio, the resolution is increased or decreased depending on the resolution of the computer and the projector to avoid impairing image quality.

Depending on the resolution, the vertical or horizontal margins may be projected in black.

Parent topic: [Supported Resolutions and Colors](#)

Display Color

The following number of computer screen colors can be projected.

Windows	Mac OS X
16-bit color	Approx. 32,000 colors (16-bit)
32-bit color	Approx. 16.7 million colors (32-bit)

Parent topic: [Supported Resolutions and Colors](#)

Limitations

Check these sections for restrictions applied when projecting computer images while using EasyMP Multi PC Projection.

[Connection Limitations](#)

[Limitations when Projecting from Windows Photo Gallery or Windows Live Photo Gallery](#)

[Limitations in Windows Aero](#)

[Limitations when Projecting from Windows Media Center](#)

Parent topic: [Appendix](#)

Connection Limitations

Note the following limitations when using EasyMP Multi PC Projection.

- You can connect up to four projectors to one computer and project simultaneously. (Multi-screen is not supported.)
- You can connect up to 50 devices between computers that are running EasyMP Multi PC Projection and smartphones or tablets that are running Epson iProjection. (If any of the computers are running an older version of EasyMP Multi PC Projection, the number of computers is limited to 16 or 32, and tablets that are running Epson iProjection cannot join the connection.)
- Audio can only be transferred when connected to one projector and projecting one computer screen in full screen mode. If multiple projectors are connected or if the projected display is divided, audio cannot be transferred during projection.
- If the transmission speed of the wireless LAN is low, the network may disconnect unexpectedly.
- Applications that use part of DirectX functions may not be displayed correctly (Windows only).
- You cannot project full-screen MS-DOS prompts (Windows only).
- There are times when the image on the computer screen and the image projected by the projector may not match exactly.
- Movies are not played as smoothly as they are on a computer.

Parent topic: [Limitations](#)

Limitations when Projecting from Windows Photo Gallery or Windows Live Photo Gallery

Note the following limitations when launching Windows Photo Gallery or Windows Live Photo Gallery when using EasyMP Multi PC Projection.

- Slideshow is played back in simple mode when projecting from Windows Photo Gallery or Windows Live Photo Gallery.

Because the toolbar is not displayed, you cannot change the Theme (effects) while playing a slide show, regardless of the Windows Experience Index rating.

Once simple mode has started, you cannot change modes while Windows Photo Gallery or Windows Live Photo Gallery is running, even if you close EasyMP Multi PC Projection. Restart Windows Photo Gallery or Windows Live Photo Gallery.

- You cannot play movies.

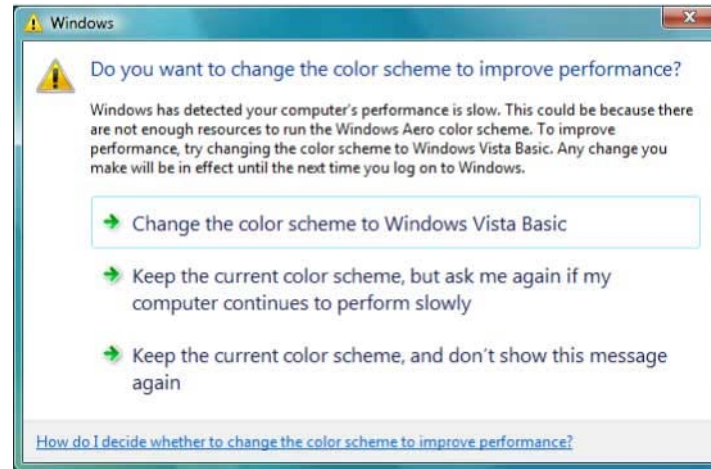
Parent topic: [Limitations](#)

Limitations in Windows Aero

Note the following limitations when the window design for your computer is Windows Aero.

- The layered window is projected regardless of the **Transfer layered window** setting on the **Set options** screen in EasyMP Multi PC Projection.

- A few minutes after you connect a computer to the projector over a network with EasyMP Multi PC Projection, the following message may be displayed.



It is recommended that you select **Keep the current color scheme, and don't show this message again**. This selection is enabled until the computer is restarted.

Parent topic: [Limitations](#)

Limitations when Projecting from Windows Media Center

Note the following limitations when projecting from Windows Media Center.

- You cannot project images in full screen mode using Windows Media Center. Switch to window display mode to project the images.
- If audio stops during playback when transferring audio from the computer to the projector using EasyMP Multi PC Projection, try restarting the application you are using.

Parent topic: [Limitations](#)

Notices

Check these sections for important notices about your projector.

[Copyright Notice](#)

[About Notations](#)

[General Notice](#)

[Copyright Attribution](#)

Parent topic: [Appendix](#)

Copyright Notice

All rights reserved. No part of this publication may be reproduced, stored in a retrieval system, or transmitted in any form or by any means, electronic, mechanical, photocopying, recording, or otherwise, without the prior written permission of Seiko Epson Corporation. No patent liability is assumed with respect to the use of the information contained herein. Neither is any liability assumed for damages resulting from the use of the information contained herein.

Neither Seiko Epson Corporation nor its affiliates shall be liable to the purchaser of this product or third parties for damages, losses, costs, or expenses incurred by the purchaser or third parties as a result of: accident, misuse, or abuse of this product or unauthorized modifications, repairs, or alterations to this product, or (excluding the U.S.) failure to strictly comply with Seiko Epson Corporation's operating and maintenance instructions.

Seiko Epson Corporation shall not be liable against any damages or problems arising from the use of any options or any consumable products other than those designated as Original Epson Products or Epson Approved Products by Seiko Epson Corporation.

The contents of this guide may be changed or updated without further notice.

Illustrations in this guide and the actual projector may differ.

Parent topic: [Notices](#)

About Notations

- Microsoft® Windows® XP Professional operating system
- Microsoft® Windows® XP Home Edition operating system
- Microsoft® Windows Vista® operating system
- Microsoft® Windows® 7 operating system
- Microsoft® Windows® 8 operating system
- Microsoft® Windows® 8.1 operating system

In this guide, the operating systems above are referred to as "Windows XP," "Windows Vista," "Windows 7," "Windows 8", and "Windows 8.1." Furthermore, the collective term Windows may be used to refer to

Windows XP, Windows Vista, Windows 7, Windows 8, Windows 8.1, and multiple versions of Windows may be referred to as, for example, Windows XP/Vista, with the Windows notation omitted.

- Mac OS X 10.4.x
- Mac OS X 10.5.x
- Mac OS X 10.6.x
- Mac OS X 10.7.x
- Mac OS X 10.8.x
- Mac OS X 10.9.x

In this guide, the operating systems above are referred to as "Mac OS X 10.4.x," "Mac OS X 10.5.x," "Mac OS X 10.6.x," "Mac OS X 10.7.x," "Mac OS X 10.8.x", and "Mac OS X 10.9.x." Furthermore, the collective term "Mac OS X" is used to refer to them all.

Parent topic: [Notices](#)

General Notice

IBM, DOS/V, and XGA are trademarks or registered trademarks of International Business Machines Corporation.

Macintosh, Mac, Mac OS, and iMac are trademarks of Apple Inc.

Microsoft, Windows, Windows NT, Windows Vista, PowerPoint, and Windows logo are trademarks or registered trademarks of Microsoft Corporation in the United States and/or other countries.

Other product names used herein are also for identification purposes only and may be trademarks of their respective owners. Epson disclaims any and all rights in those marks.

Software Copyright: This product uses free software as well as software to which this company holds the rights.

© 2015 Epson America, Inc.

Parent topic: [Notices](#)

Copyright Attribution

3/15

CPD-40960R1

Parent topic: [Notices](#)