

Projector Firmware Update

Follow these instructions to update the firmware on the PowerLite® Home Cinema 5030UB/5030UBe and PowerLite Pro Cinema 4030/6030UB projectors.

Caution: Make sure to carefully follow the update instructions. **Incorrect installation of the firmware can cause serious damage to your projector.**

Checking the current version

Before you install the firmware, check your current version to see if you already have the updated firmware.

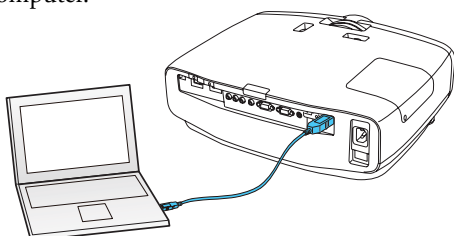
1. Press the **On** button on the remote control or the **⏻** power button on the projector.
2. Press the **Menu** button on the remote control or projector.
3. Use the down arrow button to select the **Info** menu.

Image	Lamp Hours	0 H
Signal	Source	Component
	Input Signal	RGB
Settings	Resolution	1920 x 1080
	Scan Mode	Interlace
	Refresh Rate	0.00 Hz
Extended	3D Format	Frame Packing
	Sync Info	SGNN 00000
Memory	Deep Color	0 bit
	Status	----
Info	Serial Number	ABCD11122334
	Version	V100
Reset		

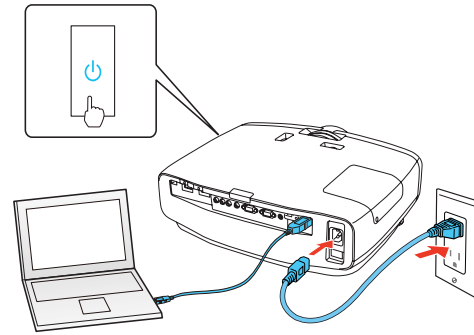
If the Version displayed on the Info menu is V111, your projector already has the update. If you see an earlier Version, follow the steps in “Installing the firmware” below.

Installing the firmware

1. Turn off the projector and allow it to cool down, then **unplug the power cable**.
2. On your computer, download the firmware file from epson.com/detailenhancement (U.S.) or epson.ca/detailenhancement (Canada).
3. Connect a Mini-USB cable to your projector’s **Service** port and the other end of the cable to a USB port on your computer.



4. Connect the power cord to the projector while holding down the projector’s **⏻** power button.



5. When the power and status lights turn solid blue and the Lamp and Temp lights turn solid orange, release the projector’s power button.

Your computer detects the projector as a removable disk and automatically displays the EPSON_PJ folder.

Note: If the folder does not appear, open **My Computer**, **Computer**, or a new Finder screen and select **EPSON_PJ**.

6. On your computer, copy the **EPSONPJ_t3111.bin** firmware file into the **EPSON_PJ** folder.

Note: Do not copy any other files or folders into the **EPSON_PJ** folder.

7. Safely eject the projector from your computer and disconnect the Mini-USB cable from the projector. After a moment, the projector’s lights flash and the firmware update starts.

Caution: Do not disconnect the power from the projector while the firmware is updating. **Interrupting the update process may render the projector inoperable.**

After the update is complete, the projector turns off.

Checking the firmware update

After you install the firmware, check to make sure that the update has been correctly applied to your projector. Follow the steps in “Checking the current version” to confirm the update.

If the Version displayed on the Info menu is V111, the firmware update installed correctly. If you see an earlier Version, repeat the steps in “Installing the firmware.”

Note: If your projector will not turn on after installing the firmware, contact Epson support.