



# **Installing and Printing with the Epson Universal Print Driver**



---

# Contents

<b>Installing and Printing with the Epson Universal Print Driver - Windows .....</b>	<b>5</b>
Installing the Epson Universal Print Driver - Windows .....	5
Synchronizing Printer Settings - Epson Universal Print Driver - Windows .....	9
Selecting Basic Print Settings - Epson Universal Print Driver - Windows .....	10
Selecting Additional Layout and Print Options - Epson Universal Print Driver - Windows .....	13
Selecting Maintenance Options - Epson Universal Print Driver - Windows .....	15
Extended Settings - Epson Universal Print Driver - Windows .....	16
Selecting Default Print Settings - Epson Universal Print Driver - Windows.....	17
Locking Printer Settings - Epson Universal Print Driver - Windows .....	19
Epson Universal Print Driver Lock Settings .....	21
Adding Network Printers - Epson Universal Print Driver - Windows .....	22
Copyright Attribution.....	25



---

# Installing and Printing with the Epson Universal Print Driver - Windows

You can print with the Epson Universal Print Driver using any Windows printing program, as described in these sections.

[Installing the Epson Universal Print Driver - Windows](#)

[Synchronizing Printer Settings - Epson Universal Print Driver - Windows](#)

[Selecting Basic Print Settings - Epson Universal Print Driver - Windows](#)

[Selecting Additional Layout and Print Options - Epson Universal Print Driver - Windows](#)

[Selecting Maintenance Options - Epson Universal Print Driver - Windows](#)

[Selecting Default Print Settings - Epson Universal Print Driver - Windows](#)

[Locking Printer Settings - Epson Universal Print Driver - Windows](#)

[Adding Network Printers - Epson Universal Print Driver - Windows](#)

[Copyright Attribution](#)

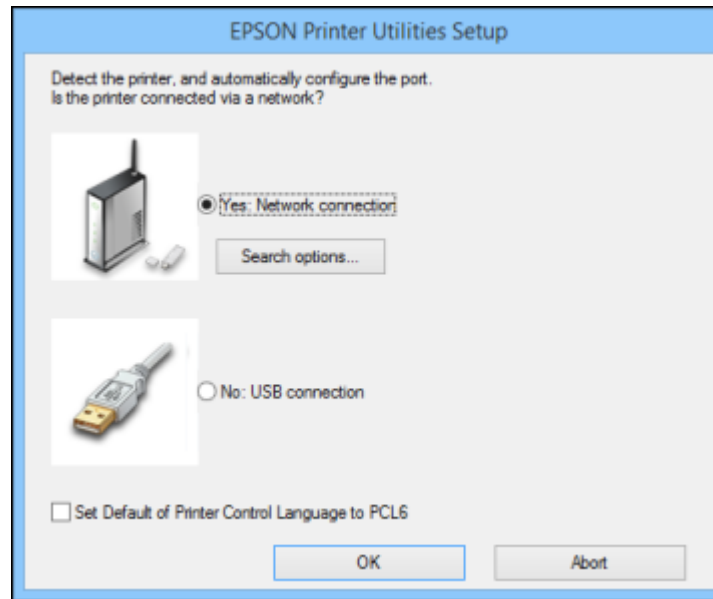
## Installing the Epson Universal Print Driver - Windows

The Epson Universal Print Driver supports multiple printer languages, such as PCL and ESC/P-R, and can be installed on a Windows computer.

**Note:** Make sure your product is turned on and connected to the same network as your computer before installing the printer software.

1. Double-click **Setup.exe**.

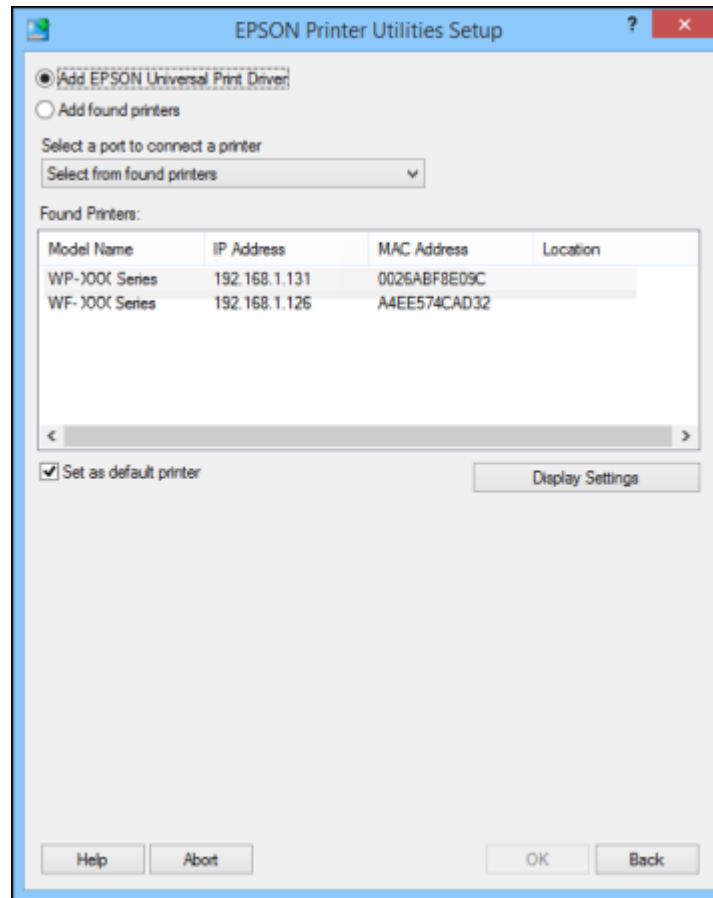
2. Follow the on-screen instructions until you see the screen below.



3. Select **Yes: Network connection** and click **OK**.

**Note:** Select the **Set Default of Printer Control Language to PCL6** checkbox if you want to set the default printer language to PCL6. Leave this option deselected to set the printer language to ESC/P-R. (You can change this setting later as needed.)

After the software finishes searching for products, you see a screen like this:



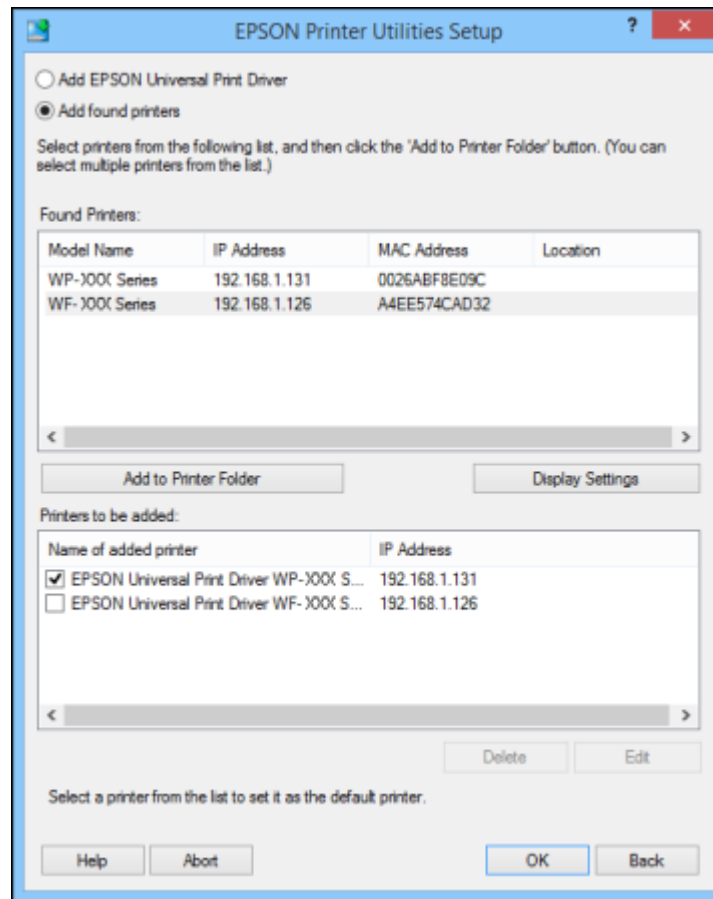
4. Do one of the following:
  - If you are installing one product, make sure **Add EPSON Universal Print Driver** is selected, and continue with the next step.
  - If you are installing more than one product, select **Add found printers**, and go to step 9.

**Note:** You can customize and filter your product search results by clicking **Display Settings**.

5. Open the **Select a port to connect a printer** pop-up menu and select an existing printer port if necessary. Otherwise, skip this option to have a new port created automatically.
6. Select the product you want to install from the Found Printers list.

**Note:** Deselect the **Set as default printer** checkbox if you do not want the product to be set as your default printer.

7. Click **OK**, then skip the remaining steps.
8. Select each product you want to install and click **Add to Printer Folder**.





The selected products appear in the lower section of the screen.



9. Select the checkbox next to a product to make it your default printer if necessary.
10. Click **OK**.

**Parent topic:** [Installing and Printing with the Epson Universal Print Driver - Windows](#)

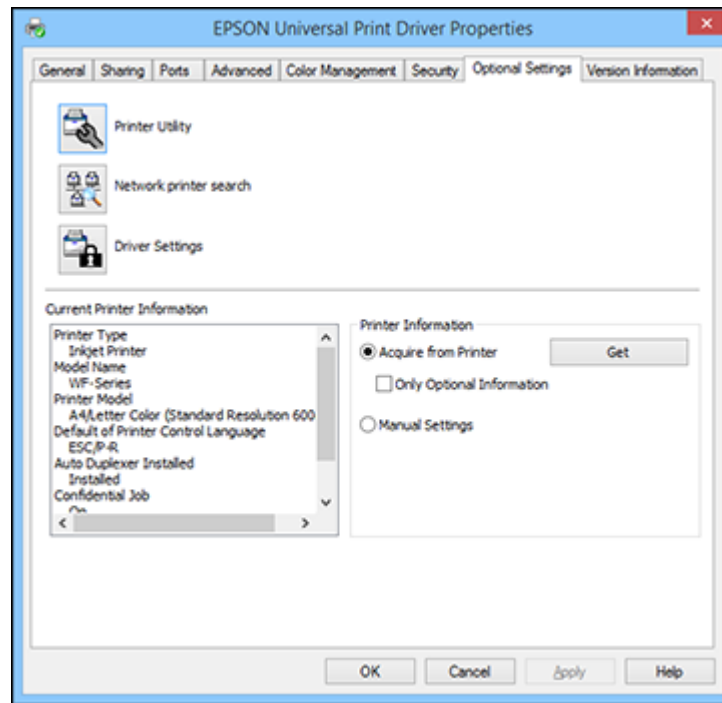
## Synchronizing Printer Settings - Epson Universal Print Driver - Windows

You may need to synchronize the printer driver with the product if the printer driver does not detect the correct information or settings from the product.

**Note:** You must sync the printer driver before you can use any optional equipment installed on the product, such as an optional cassette unit.

1. Do one of the following:
  - **Windows 8.x:** Navigate to the **Apps** screen and select **Control Panel > Hardware and Sound > Devices and Printers**. Right-click **EPSON Universal Print Driver** and select **Printer properties**.
  - **Windows 7:** Click  and select **Devices and Printers**. Right-click **EPSON Universal Print Driver** and select **Printer properties**.
  - **Windows Vista:** Click  and select **Control Panel**. Click **Printer** under **Hardware and Sound**, then right-click **EPSON Universal Print Driver** and select **Properties**.
  - **Windows XP:** Click **Start** and select **Printers and Faxes**. Right-click **EPSON Universal Print Driver** and select **Properties**.
2. Click the **Optional Settings** tab.

You see this window:



3. Make sure **Acquire from Printer** is selected and click **Get**.

**Note:** Select the **Only Optional Information** checkbox if you only want to enable optional equipment, such as an optional cassette unit.

The product's settings and other information appears in the Current Printer Information area.

4. Click **OK**.

**Parent topic:** [Installing and Printing with the Epson Universal Print Driver - Windows](#)

## Selecting Basic Print Settings - Epson Universal Print Driver - Windows

Select the basic settings for the document or photo you want to print.

1. Open a photo or document for printing.

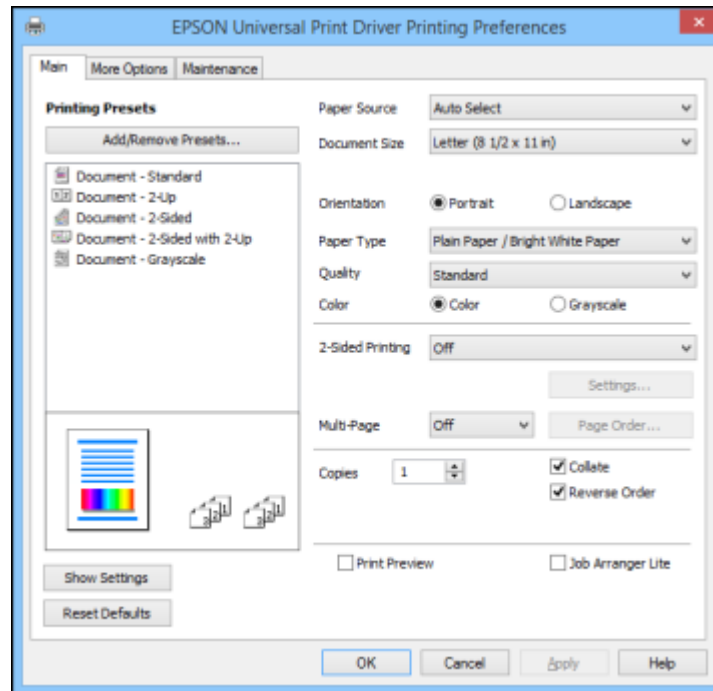
2. Select the print command in your application.

**Note:** You may need to select a print icon on your screen, the **Print** option in the **File** menu, or another command. See your application's help utility for details.

3. If necessary, select **EPSON Universal Print Driver** as the printer you want to use.

**Note:** You may also need to select **Properties** or **Preferences** to view your print settings.

You see the Main tab of your printer settings window:



**Note:** For more information about a setting, right-click it and select **Help**.

4. For the **Paper Source** setting, select where you loaded the paper you want to print on.

5. Select the size of the paper you loaded as the **Document Size** setting.

**Note:** You can also select the **User-Defined** setting to create a custom paper size.

6. Select the orientation of your document.

**Note:** If you are printing an envelope, select **Landscape**.

7. Select the type of paper you loaded as the **Paper Type** setting.

**Note:** The setting may not exactly match the name of your paper. Check the paper type settings list for details.

8. Select the **Quality** setting that matches the print quality you want to use.

9. Select a Color option:

- To print a color document or photo, select the **Color** setting.
- To print text and graphics in black or shades of gray, select the **Grayscale** setting.

10. To print on both sides of the paper, select one of the **2-Sided Printing** settings.

11. To print multiple pages on one sheet of paper, or print one image on multiple sheets of paper, select one of the settings in the **Multi-Page** menu and select the printing options you want.

12. To print multiple copies and arrange their print order, select the **Copies** options.

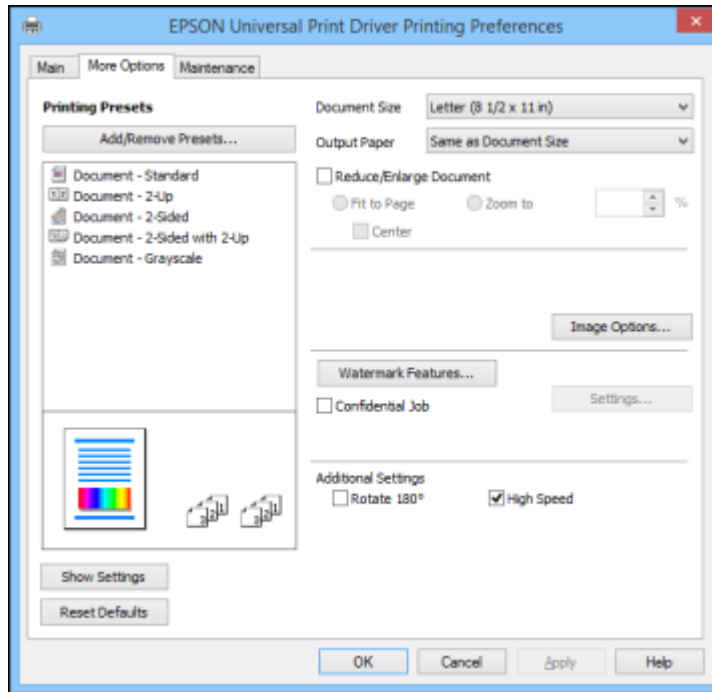
13. To preview your job before printing, select **Print Preview**.

14. To save your print job as a project that can be modified and combined with other print jobs, select **Job Arranger Lite**.

**Parent topic:** [Installing and Printing with the Epson Universal Print Driver - Windows](#)

## Selecting Additional Layout and Print Options - Epson Universal Print Driver - Windows

You can select a variety of additional layout and printing options for your document or photo on the More Options tab.



**Note:** For more information about a setting, right-click it and select **Help**.

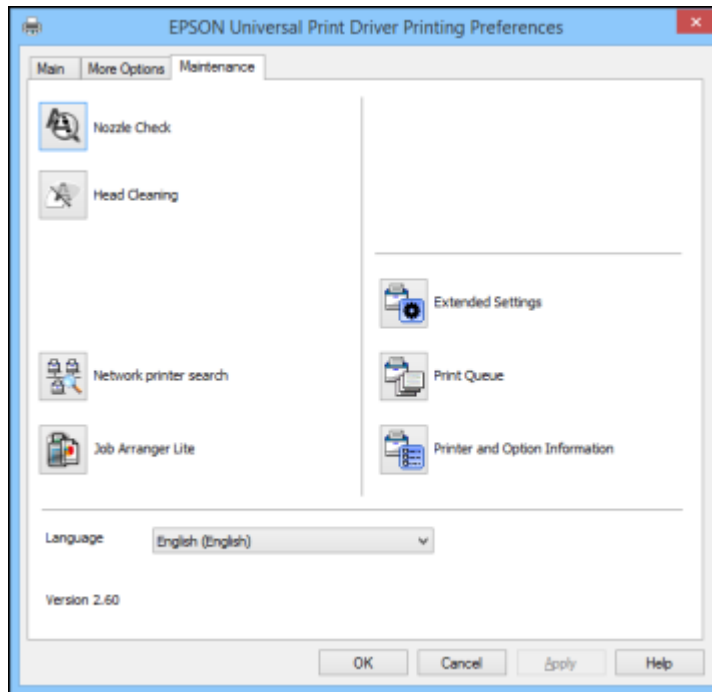
1. To change the size of your printed document or photo, select the **Reduce/Enlarge Document** checkbox and select one of these sizing options:
  - Select the **Fit to Page** option to size your image to fit the paper you loaded. Select the size of the your document or photo as the **Document Size** setting, and the size of your paper as the **Output Paper** setting. If you want to center your image on the paper, select the **Center** option.
  - Select the **Zoom to** option to reduce or enlarge your document or photo by a specific percentage. Select the percentage in the % menu.

2. Select one of the following Color Correction options:
  - Select **Automatic** to automatically adjust the sharpness, brightness, contrast, and color saturation for your image.
  - Select **Custom** and click the **Advanced** button to manually adjust the color correction settings or turn off color management in your printer software.
  - Select **Image Options** to access additional settings for improving printed images.
3. To add the following features, click the **Watermark Features** button:
  - **Watermark**: adds a visible watermark to your printout.  
  
**Note:** Click the **Add/Delete** button to create your own watermark, and click the **Settings** button to customize the watermark.
  - **Header/Footer**: adds information such as the date and time to the top or bottom of your printout.  
  
**Note:** Click the **Settings** button to customize the text and location of the header or footer.
4. To add a password to your print job, select the **Confidential Job** checkbox, then enter a password. Confidential jobs are stored in the product's memory without being printed. To print the job, enter the password for the confidential job on the product's control panel.  
  
**Note:** Confidential print jobs are cleared from the product's memory after printing.
5. Select any of the Additional Settings options to customize your print.

**Parent topic:** [Installing and Printing with the Epson Universal Print Driver - Windows](#)

## Selecting Maintenance Options - Epson Universal Print Driver - Windows

You can select maintenance and other optional settings on the Maintenance tab.



**Note:** For more information about a setting, right-click it and select **Help**.

- **Nozzle Check** lets you print a nozzle check pattern to check for clogged nozzles.
- **Head Cleaning** lets you clean the print head.
- **Network printer search** lets you search for and connect to a product on the network.
- **Job Arranger Lite** lets you save your print job as a project that can be modified and combined with other print jobs.
- **Extended Settings** lets you change a variety of print settings.
- **Print Queue** displays all the print jobs in queue. You can also cancel or restart print jobs.

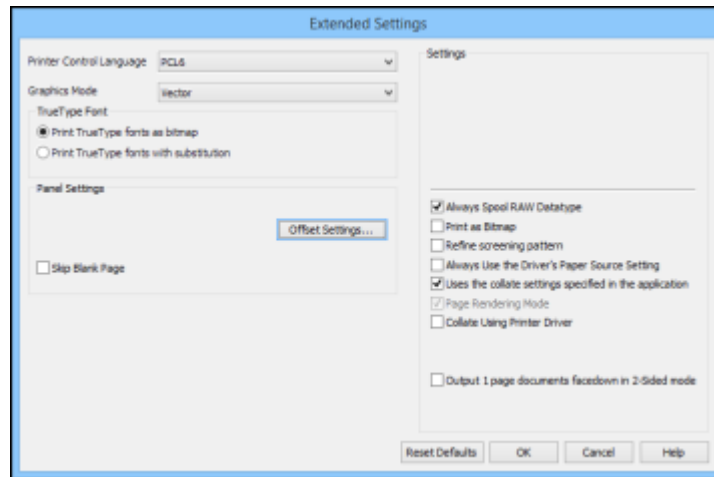
- **Printer and Option Information** displays information on the printer settings and any optional equipment installed.
- **Language** lets you change the language of the printer software screens.

[Extended Settings - Epson Universal Print Driver - Windows](#)

**Parent topic:** [Installing and Printing with the Epson Universal Print Driver - Windows](#)

## Extended Settings - Epson Universal Print Driver - Windows

You can select from these settings on the Extended Settings window.



### Printer Control Language

Lets you select the printer control language.

### Graphics Mode

Lets you select the mode by which to output PDL commands to the product.

### TrueType Font

Lets you select how you want to print TrueType fonts.

### Offset Settings

Lets you make fine-tune adjustments to the print position of data on your printout.

### Skip Blank Page

Ensures that your product does not print pages that contain no text or images.



**Always Spool RAW Datatype**

Increases print speed and may solve other printing problems.

**Print as Bitmap**

Increases print speed when printing is extremely slow or the print head stops during printing, and other settings do not help.

**Refine screening pattern**

Prints graphics with a finer screening pattern.

**Always Use the Driver's Paper Source Setting**

Prints using the paper source setting in the printer driver, rather than the setting in your application.

**Uses the collate settings specified in the application**

Prints using the collate setting in your application.

**Page Rendering Mode**

Increases print speed when printing is extremely slow or the print head stops during printing.

**Collate Using Printer Driver**

Prints and collates multi-page documents using the printer driver. Deselect this checkbox to use the product to collate your print jobs instead. (This setting is automatically enabled if there is not enough memory on the product to collate your print job.)



**Output 1 page documents facedown in 2-Sided mode**

Outputs single-sided pages in a 2-sided print job facedown instead of faceup.

Parent topic: [Selecting Maintenance Options - Epson Universal Print Driver - Windows](#)

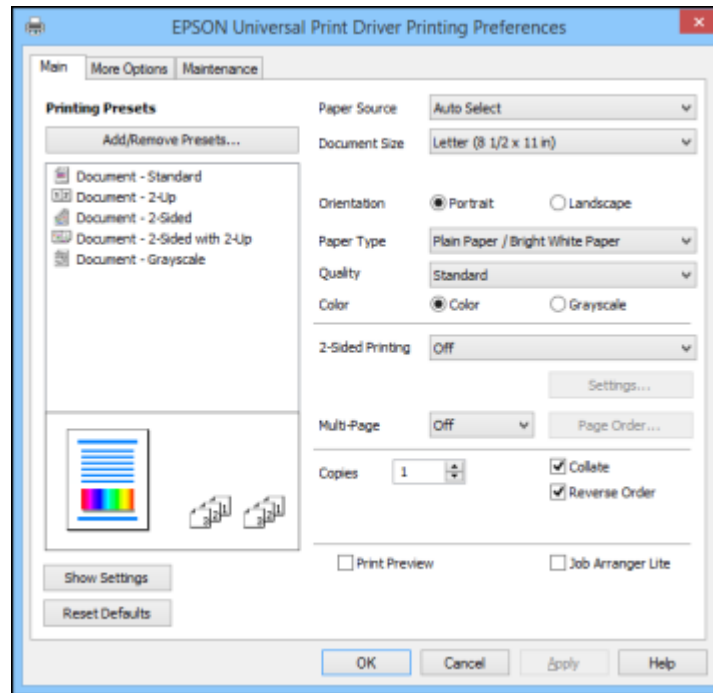
## Selecting Default Print Settings - Epson Universal Print Driver - Windows

When you change your print settings in a program, the changes apply only while you are printing in that program session. If you want to change the print settings you use in all your Windows programs, you can select new default print settings.

1. Do one of the following:
  - **Windows 8.x:** Navigate to the **Apps** screen and select **Control Panel > Hardware and Sound > Devices and Printers**. Right-click **EPSON Universal Print Driver** and select **Print Preferences**.
  - **Windows 7:** Click  and select **Devices and Printers**. Right-click **EPSON Universal Print Driver** and select **Printing Preferences**.
  - **Windows Vista:** Click  and select **Control Panel**. Click **Printer** under **Hardware and Sound**, right-click **EPSON Universal Print Driver**, and select **Printing Preferences**.

- **Windows XP:** Click **Start** and select **Printers and Faxes**. Right-click **EPSON Universal Print Driver** and select **Printing Preferences**.

You see the printer settings window:



**Note:** For more information about a setting, right-click it and select **Help**.



2. Select the print settings you want to use as defaults in all your Windows programs.
3. Click **OK**.

These settings are now the defaults selected for printing. You can still change them as needed for printing in any program session.

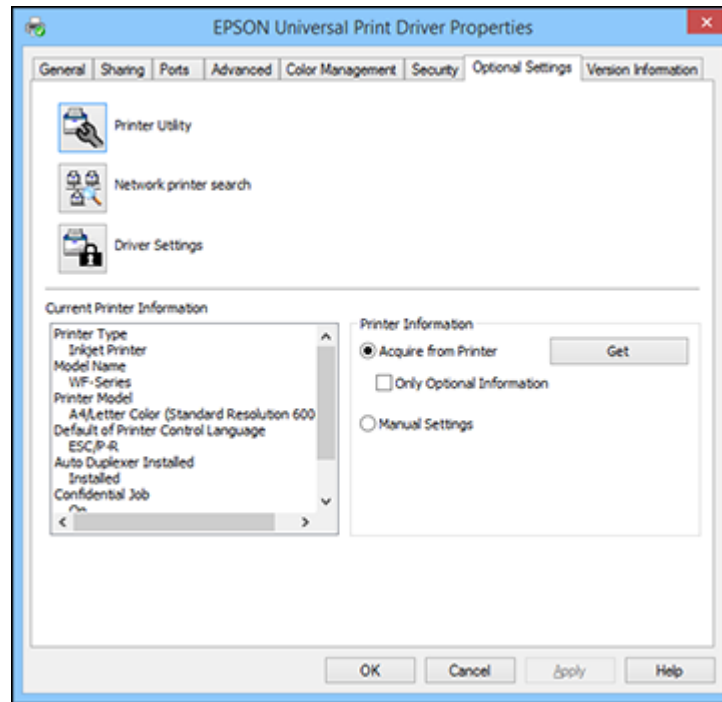
**Parent topic:** [Installing and Printing with the Epson Universal Print Driver - Windows](#)

## Locking Printer Settings - Epson Universal Print Driver - Windows

Administrators can lock some printer settings to prevent unauthorized changes. The following settings can be locked:

- Watermark
  - Header/footer
  - Color printing
  - 2-sided printing
  - Multi-page printing
  - All document settings
1. Do one of the following:
    - **Windows 8.x:** Navigate to the **Apps** screen and select **Control Panel > Hardware and Sound > Devices and Printers**. Right-click **EPSON Universal Print Driver** and select **Printer properties**.
    - **Windows 7:** Click  and select **Devices and Printers**. Right-click **EPSON Universal Print Driver** and select **Printer properties**.
    - **Windows Vista:** Click  and select **Control Panel**. Click **Printer** under **Hardware and Sound**, then right-click **EPSON Universal Print Driver** and select **Properties**.
    - **Windows XP:** Click **Start** and select **Printers and Faxes**. Right-click **EPSON Universal Print Driver** and select **Properties**.
  2. Click the **Optional Settings** tab.

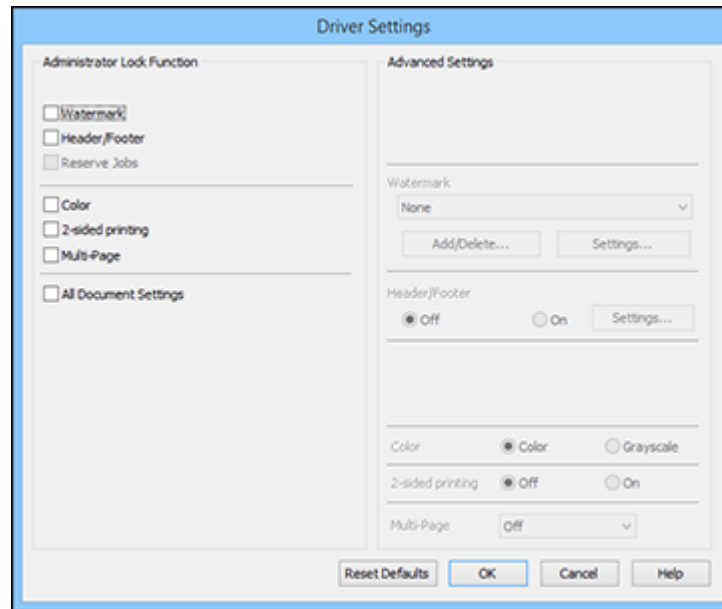
You see this window:



**Note:** You can prevent access to the **Optional Settings** tab by changing the user or group permissions in the **Security** tab.

3. Click **Driver Settings**.

You see this window:



4. Select the checkbox for the function or functions you want to lock. To lock all print settings, select **All Document Settings**.
5. Under **Advanced Settings**, select the setting you want for each selected function.
6. Click **OK**.

[Epson Universal Print Driver Lock Settings](#)

**Parent topic:** [Installing and Printing with the Epson Universal Print Driver - Windows](#)

## Epson Universal Print Driver Lock Settings



Select the settings you want to use for locking print functions.

Printing function	Available settings	Description
<b>Watermark</b>	Various text watermarks	Lets you select the text for the watermark (or prohibit watermarks)
	<b>Add/Delete</b>	Lets you add (or delete) a customized text or image-based watermark
	<b>Settings</b>	Lets you select the size, position, color and other watermark settings
<b>Header/Footer</b>	<b>Off</b>	Prohibits headers or footers
	<b>On</b>	Allows headers and footers
	<b>Settings</b>	Lets you select the text and position for printing headers and/or footers
<b>Color</b>	<b>Color</b>	Allows color printing
	<b>Grayscale</b>	Prints in black or shades of gray only
<b>2-sided printing</b>	<b>Off</b>	Allows printing on only one side of the paper
	<b>On</b>	Allows printing on both sides of the paper
<b>Multi-Page</b>	<b>Off</b>	Prohibits multi-page settings
	<b>2-Up</b>	Prints 2 pages on one sheet of paper
	<b>4-Up</b>	Prints 4 pages on one sheet of paper

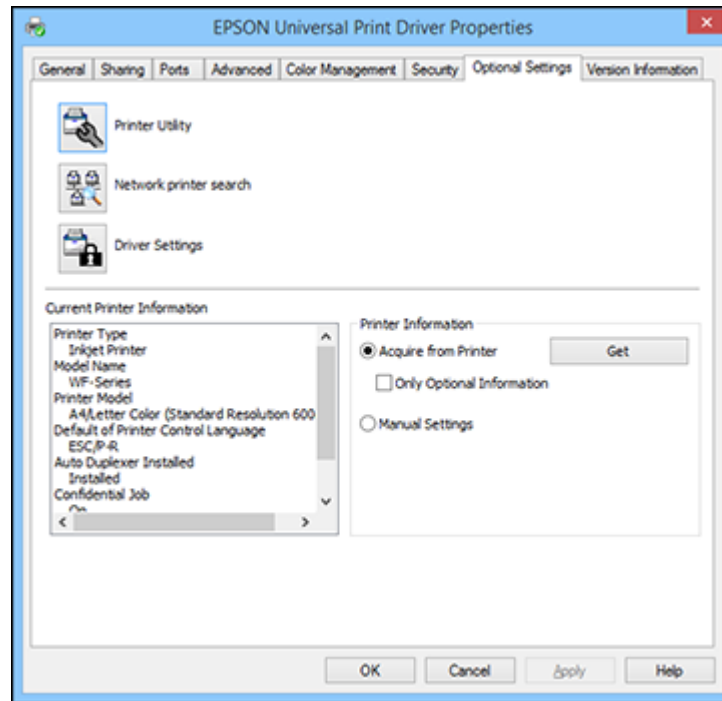
Parent topic: [Locking Printer Settings - Epson Universal Print Driver - Windows](#)

## Adding Network Printers - Epson Universal Print Driver - Windows

You can use the Epson Universal Print Driver to find and add network printers.

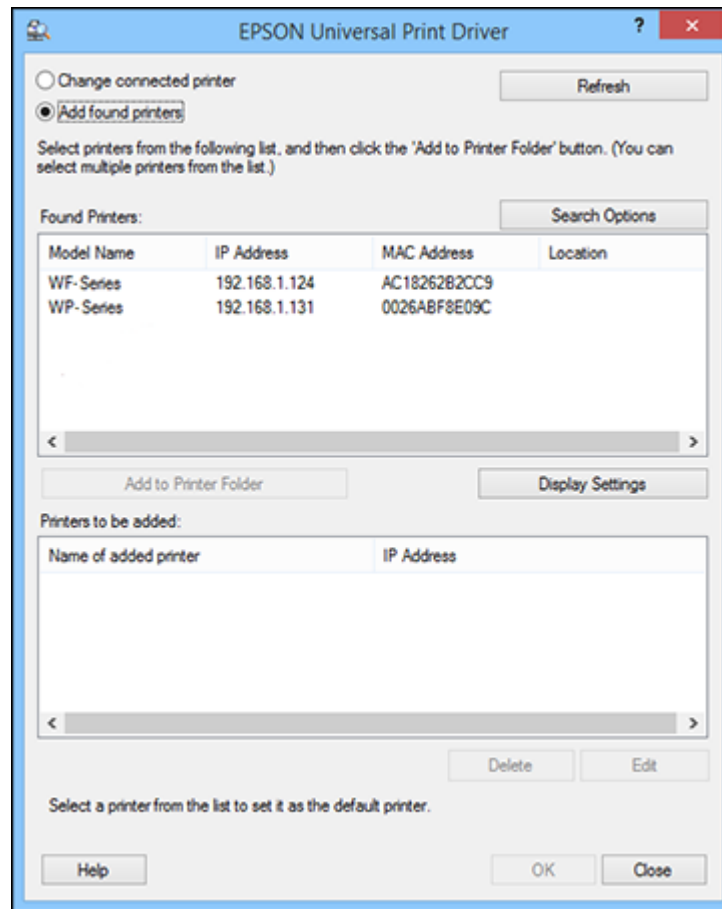
- Do one of the following:
  - Windows 8.x:** Navigate to the **Apps** screen and select **Control Panel > Hardware and Sound > Devices and Printers**. Right-click **EPSON Universal Print Driver** and select **Printer properties**.
  - Windows 7:** Click  and select **Devices and Printers**. Right-click **EPSON Universal Print Driver** and select **Printer properties**.
  - Windows Vista:** Click  and select **Control Panel**. Click **Printer** under **Hardware and Sound**, then right-click **EPSON Universal Print Driver** and select **Properties**.

- **Windows XP:** Click **Start** and select **Printers and Faxes**. Right-click **EPSON Universal Print Driver** and select **Properties**.
2. Click the **Optional Settings** tab.  
You see this window:



3. Click **Network printer search**.
4. When you see the search results, select **Add found printers**.

You see a screen like this:



5. Select the printer or printers you want to add.
6. Click **Add to Printer Folder**.  
The selected printer or printers appear in the lower section of the screen.
7. Click **OK**.

**Parent topic:** [Installing and Printing with the Epson Universal Print Driver - Windows](#)



## Copyright Attribution

© 2014 Epson America, Inc.

12/14

CPD-42607

**Parent topic:** [Installing and Printing with the Epson Universal Print Driver - Windows](#)