

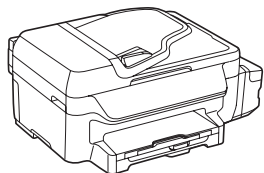
# ET-4550

# Start Here

**Read these instructions before using your product.**

**Note for Spanish speakers/Nota para hispanohablantes:** Para obtener instrucciones de configuración en español, consulte la *Guía de instalación* en [epson.com/support/et4550sp](http://epson.com/support/et4550sp) (requiere una conexión a Internet).

## 1 Unpack

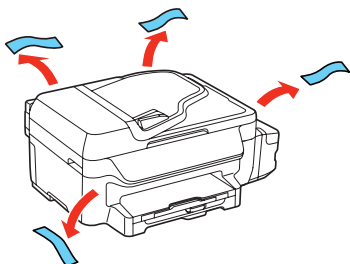


Transportation kit

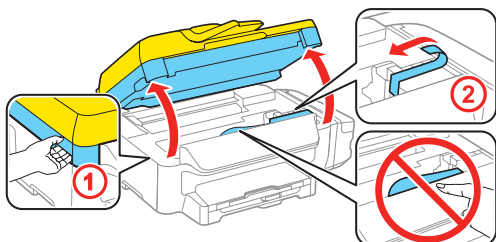
### Note:

- Your product includes 4 **Initial** bottles that are designed for product setup and 4 additional bottles (1 black bottle and 3 smaller color **Bonus** bottles) for refilling.
- Do not open the ink bottles until you are ready to fill the ink tanks. The ink bottles are vacuum packed to maintain reliability.

- 1 Remove all protective materials from the product.

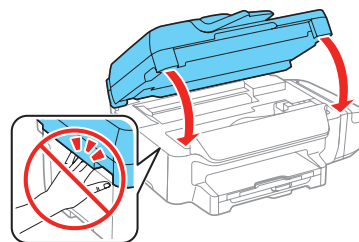


- 2 Lift up the scanner unit and remove all protective materials from inside the product.



**Caution:** Do not touch the translucent part or ink tubes.

- 3 Lower the scanner unit.

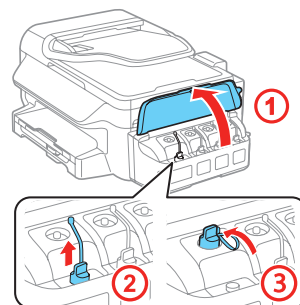


## 2 Fill ink tanks

**Note:** This product requires careful handling of ink. Wear disposable gloves and place a sheet of paper under the ink tank when you fill or refill the ink tanks, as ink may splatter. If ink spills, wipe it off immediately with a damp towel to avoid permanent stains. If ink gets on your clothes or belongings, it may not come off.

**Warning:** Keep the ink bottles out of the reach of children and do not drink the ink.

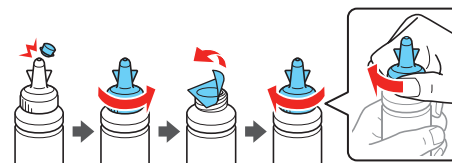
- 1 Open the ink tank unit cover, then remove the cap for the black ink tank and attach it to its holder.



- 2 Unpack the black **Initial** ink bottle.

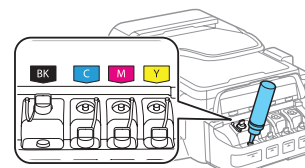


- 3 Snap the bottle tip off, then remove the bottle cap. Carefully remove the protective seal (avoid touching the ink underneath the seal), then close the bottle cap tightly.



**Caution:** Be sure to close the bottle cap tightly, or ink may leak.

- 4 Fill the tank using all of the ink in the bottle.



**Note:** Refer to the color coded sticker above the ink tank unit to identify the color of each tank.

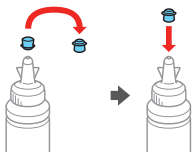
**Caution:** Be sure to fill each tank with the correct ink color.



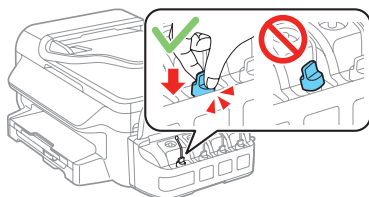
\*413013900\*

**EPSON**  
EXCEED YOUR VISION

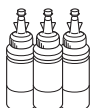
- 5** Carefully seal the bottle using the reverse side of the bottle tip for proper disposal.



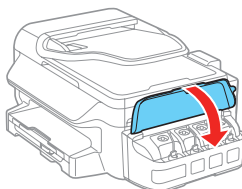
- 6** Close the ink tank securely.



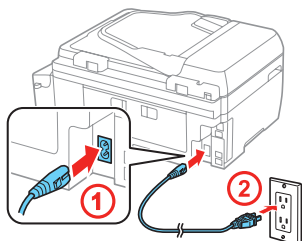
- 7** Repeat the previous steps for the 3 other **Initial** bottles.



- 8** Close the ink tank unit cover.

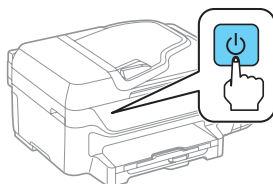


- 9** Connect the power cord to the back of the product and to an electrical outlet.



**Caution:** Do not connect to your computer yet.

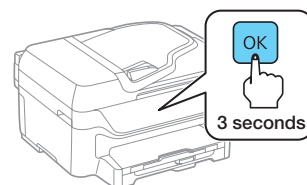
- 10** Turn on the product. Select your language, country, date, and time.



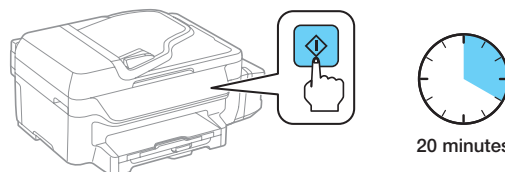
**Note:**

- You can change these settings later using the product's control panel. For more information, see the online *User's Guide*.
- If an error message appears, turn off the product and check that no protective material has been left inside the product.

- 11** When the message to see the setup manual is displayed on the LCD screen, press and hold the **OK** button for 3 seconds.



- 12** Press one of the **Start** buttons to start charging the ink. Ink charging takes approximately 20 minutes. Ink charging is complete when the power light stops flashing.

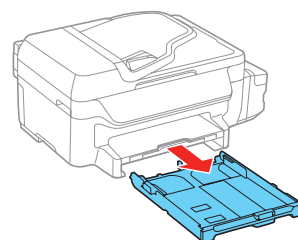


**Note:** After some ink is used for charging, the rest is available for printing.

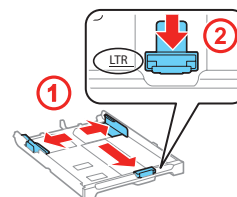
**Caution:** Do not turn off the product, raise the scanner unit, or load paper while the product is charging or you'll waste ink.

## 3 Load paper

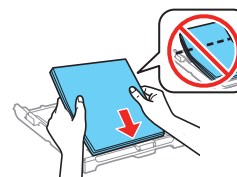
- 1** Make sure the product is not charging, and then pull out the paper cassette.



- 2** Slide the side edge guides all the way out and set the front edge guide to the paper size you are using.

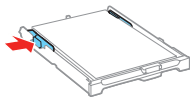


- 3** Insert paper with the glossy or printable side down.

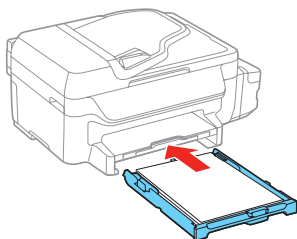


**Note:** Make sure the paper is loaded against the front edge guide and not sticking out from the end of the cassette.

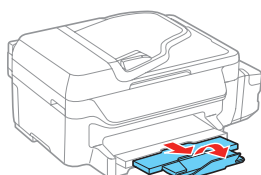
- 4** Slide the side edge guides against the paper, but not too tightly.



- 5** Keep the cassette flat as you insert it all the way in.



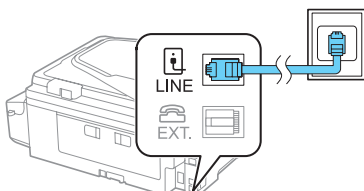
- 6** Pull out the output tray.



- 7** Select the paper settings on the product's control panel.

## 4 Connect the fax line

- 1** Connect a phone cord to a telephone wall jack and to the **LINE** port on your product. See the online *User's Guide* for more information.

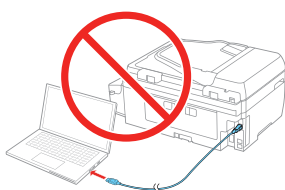


- 2** Press **▲** on the control panel if you want to set up the fax, or press **▼** to set it up later.

## 5 Install software

**Note:** If your computer does not have a CD/DVD drive or you are using a Mac, an Internet connection is required to obtain the product software.

- 1** Make sure the product is **NOT CONNECTED** to your computer.



**Windows®:** If you see a Found New Hardware screen, click **Cancel** and disconnect the USB cable.

- 2** Insert the product CD or download and run your product's software package:

[epson.com/support/et4550](http://epson.com/support/et4550) (U.S.) or  
[epson.ca/support/et4550](http://epson.ca/support/et4550) (Canada)

- 3** Follow the instructions on the screen to run the setup program.

**OS X:** Make sure you install Software Updater to receive firmware and software updates for your product.

- 4** When you see the Select Your Connection screen, select one of the following:

- **Wireless connection**

In most cases, the software installer automatically attempts to set up your wireless connection. If setup is unsuccessful, you may need to enter your network name (SSID) and password.

- **Direct USB connection**

Make sure you have a USB cable (not included).

- **Wired network connection**

Make sure you have an Ethernet cable (not included).

## Mobile printing options

To print from a mobile device, your product must be set up for wireless printing or Wi-Fi Direct®. See the online *User's Guide* for instructions.

### iOS/Android™



[epson.com/iprint](http://epson.com/iprint)

### Epson Connect™

Connect wirelessly from your tablet, smartphone, or computer. Print documents and photos from across the room or around the world.

[epson.com/connect](http://epson.com/connect)

## Any problems?

### Network setup was unsuccessful.

- Make sure you select the right network name (SSID). The product can only connect to a network that supports 2.4 GHz.
- If you see a firewall alert message, click **Unblock** or **Allow** to let setup continue.
- If your network has security enabled, make sure you enter your network password (WEP key or WPA passphrase) correctly. Passwords must be entered in the correct case.

### There are lines or incorrect colors in my printouts.

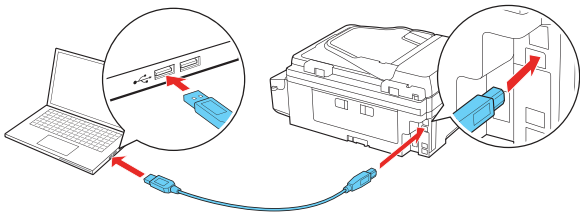
Run a nozzle check to see if any of the print head nozzles are clogged. Then clean the print head, if necessary. See the online *User's Guide* for more information.

### The product's screen is dark.

Make sure your product is turned on and press any button to wake it from sleep mode.

Setup is unable to find my product after connecting it with a USB cable.

Make sure the product is on and securely connected as shown:



# Any questions?

## Quick Guide

Basic information and troubleshooting.

## User's Guide

**Windows:** Click the icon on your desktop or Apps screen to access the online *User's Guide*.

**OS X:** Click the icon in **Applications/Epson Software/Guide** to access the online *User's Guide*.

If you don't have a User's Guide icon, go to the Epson website, as described below.

## Epson technical support

[epson.com/support](http://epson.com/support) (U.S.) or [epson.ca/support](http://epson.ca/support) (Canada)

(562) 276-4382 (U.S.) or (905) 709-3839 (Canada), 6 AM to 8 PM, Pacific Time, Monday through Friday, and 7 AM to 4 PM, Pacific Time, Saturday. Days and hours of support are subject to change without notice. Toll or long distance charges may apply.

## Recycling

Epson offers a recycling program for end of life hardware and ink bottles. Please go to [epson.com/recycle](http://epson.com/recycle) for information on how to return your products for proper disposal.

# Need paper and ink?

Try Epson® specialty inks and papers to get good results. For the right supplies at the right time, you can purchase them at [epson.com/ink3](http://epson.com/ink3) (U.S. sales) or [epson.ca](http://epson.ca) (Canadian sales). You can also purchase supplies from an Epson authorized reseller. Call 800-GO-EPSON (800-463-7766).



## ET-4550 refill inks

Color	Code
Black	774
Cyan	664
Magenta	664
Yellow	664



EPSON is a registered trademark, Epson Connect is a trademark, and EPSON Exceed Your Vision is a registered logomark of Seiko Epson Corporation. Designed for Excellence is a trademark of Epson America, Inc.

Mac and OS X are trademarks of Apple Inc., registered in the U.S. and other countries.

Android is a trademark of Google Inc.

Wi-Fi Direct® is a registered trademark of Wi-Fi Alliance®.

General Notice: Other product names used herein are for identification purposes only and may be trademarks of their respective owners. Epson disclaims any and all rights in those marks.

This information is subject to change without notice.

© 2015 Epson America, Inc., 5/15

Printed in XXXXXX

CPD-42921R1