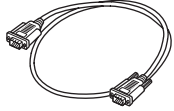




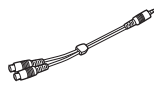
SMART Board[®] M600 Series/800 Series

Connection Guide • Guide de connexion • Guía de conexión • Guia de conexão

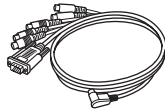
A



B*



C



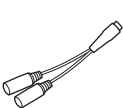
These items are supplied with the SMART Board. See your SMART Board documentation for connection instructions. Items C and E vary depending on the SMART Board model and country.

Ces pièces sont fournies avec le SMART Board. Consultez la documentation du SMART Board pour les instructions de connexion. Les pièces C et E varient selon le modèle du SMART Board et le pays.

Estas piezas son suministradas con el SMART Board. Consulte la documentación del SMART Board para obtener instrucciones de conexión. Las piezas C y E varían según el modelo del SMART Board y el país.

Estes itens são fornecidos com o SMART Board. Consulte a documentação do SMART Board para instruções de conexão. Os itens C e E variam dependendo do modelo do SMART Board e do país.

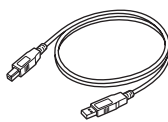
D



E



F



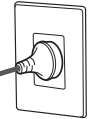
Example 2
Exemple 2
Ejemplo 2
Exemplo 2



F

SMART Board

USB 2 USB 1



Example 1
Exemple 1
Ejemplo 1
Exemplo 1



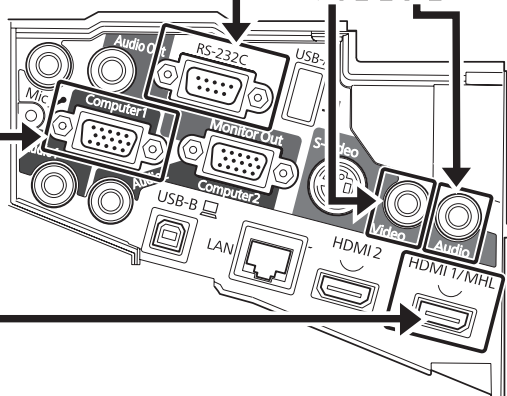
F

A

D

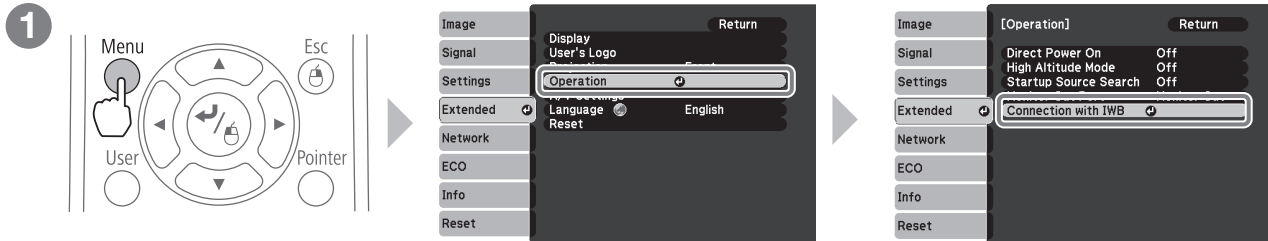
E

B*

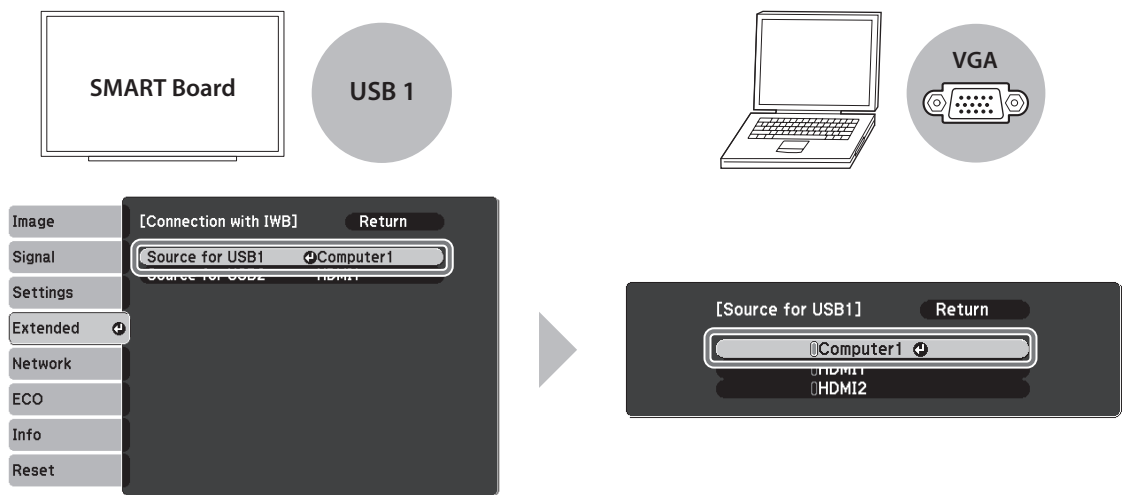


* For SMART Board M600 Series only
Pour SMART Board M600 Series seulement
Solamente para el modelo SMART Board M600 Series
Somente para o SMART Board M600 Series

Adjust the following menu settings on your projector to complete the connection to the computer.
 Réglez les paramètres de menu suivants sur votre projecteur pour compléter la connexion à l'ordinateur.
 Configure los siguientes ajustes de menú en el proyector para completar la conexión a la computadora.
 Ajuste as seguintes configurações do menu no seu projetor para completar a conexão ao computador.



2 Example 1/Exemple 1/Ejemplo 1/Exemplo 1



Example 2/Exemple 2/Ejemplo 2/Exemplo 2

