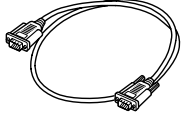




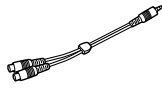
SMART Board[®] M600 Series/800 Series

Connection Guide • Guide de connexion

A



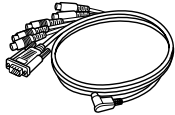
B*



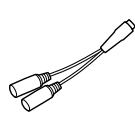
These items are supplied with the SMART Board. See your SMART Board documentation for connection instructions. Items C and E vary depending on the SMART Board model and country.

Ces pièces sont fournies avec le SMART Board. Consultez la documentation du SMART Board pour les instructions de connexion. Les pièces C et E varient selon le modèle du SMART Board et le pays.

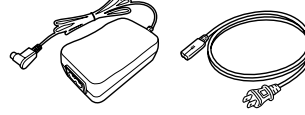
C



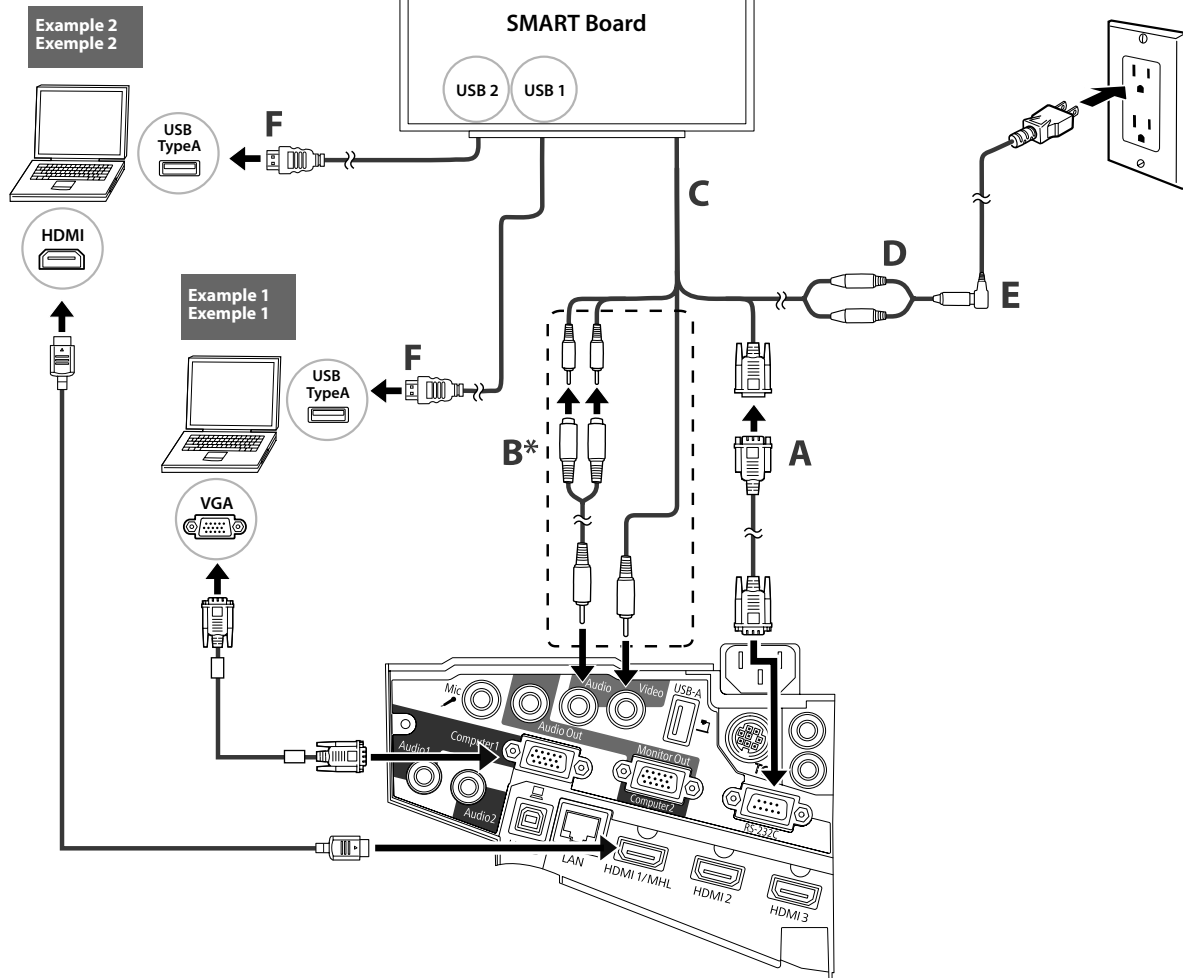
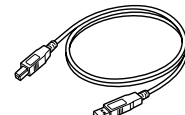
D



E

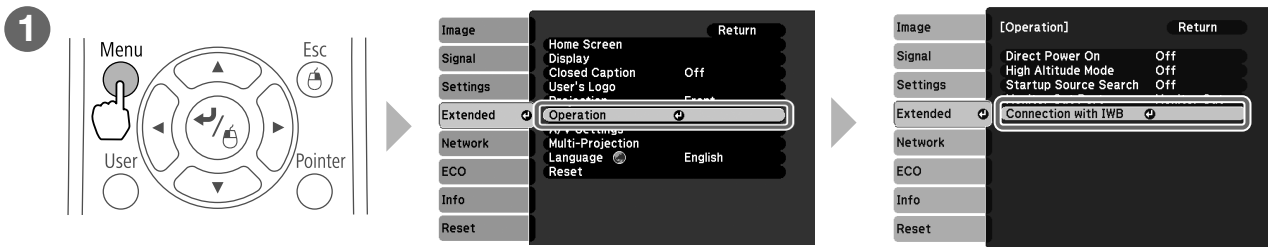


F

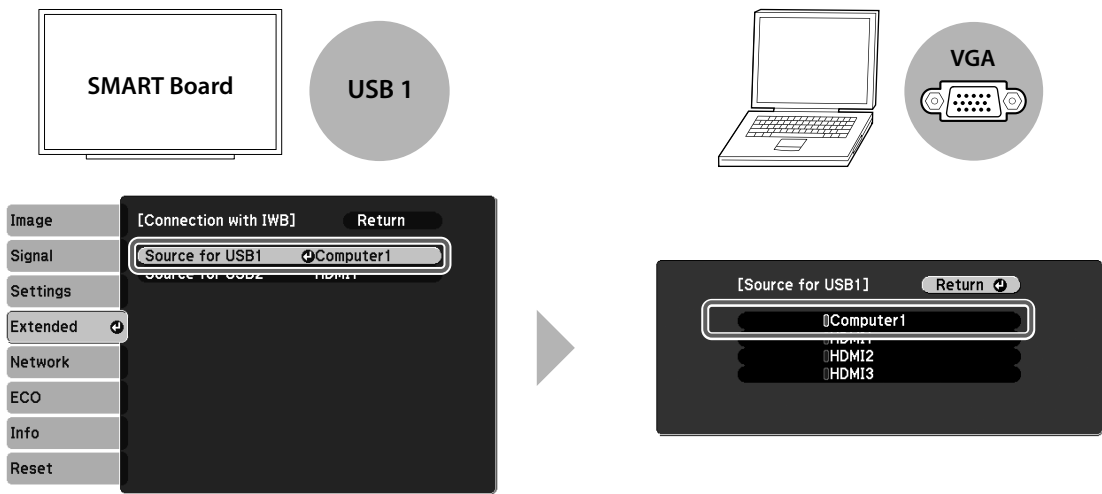


* For SMART Board M600 Series only
Pour SMART Board M600 Series seulement

Adjust the following menu settings on your projector to complete the connection to the computer.
 Réglez les paramètres de menu suivants sur votre projecteur pour compléter la connexion à l'ordinateur.



2 Example 1/Exemple 1



Example 2/Exemple 2

