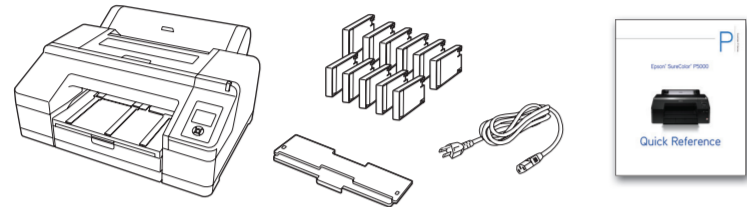


Start Here

Read these instructions before using your product.

Unpack

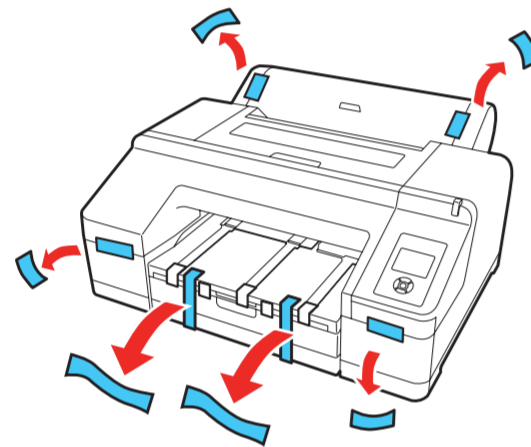
1 Make sure you have these items:



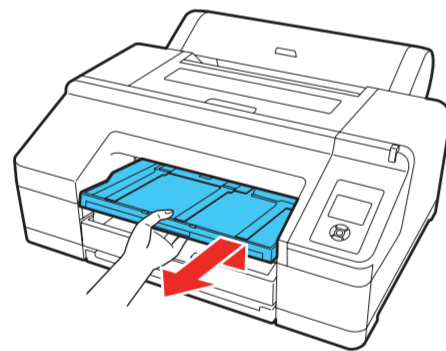
Note: Do not open ink cartridge packages until you are ready to install the ink. Cartridges are vacuum packed to maintain reliability.

Warning: The product is heavy and should be lifted and moved by two people.

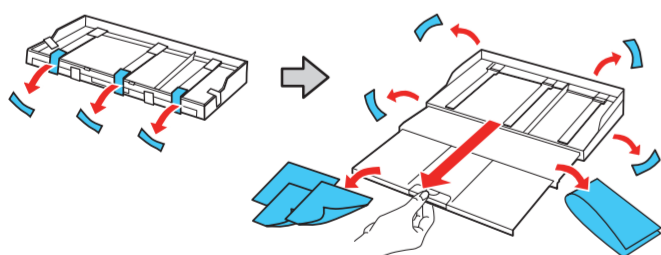
2 Remove the tape from the front of the printer.



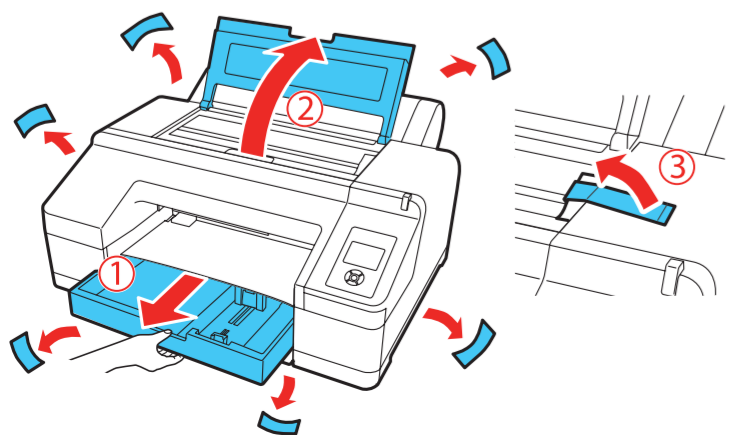
3 Lift the edge of the output tray and pull it out to remove it.



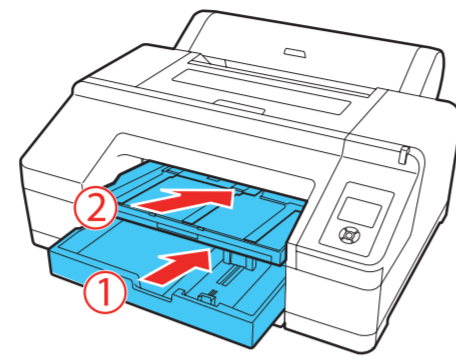
4 Remove all packing materials and tape from the output tray.



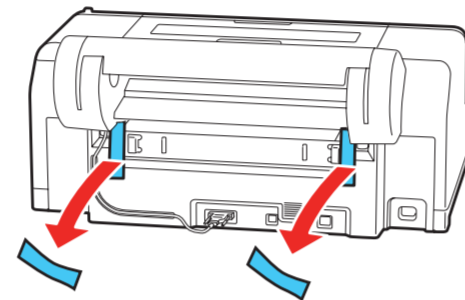
5 Pull out the paper cassette and open the top cover. Remove all packing materials and tape from inside the product, then close the top cover.



6 Replace the paper cassette and output tray.

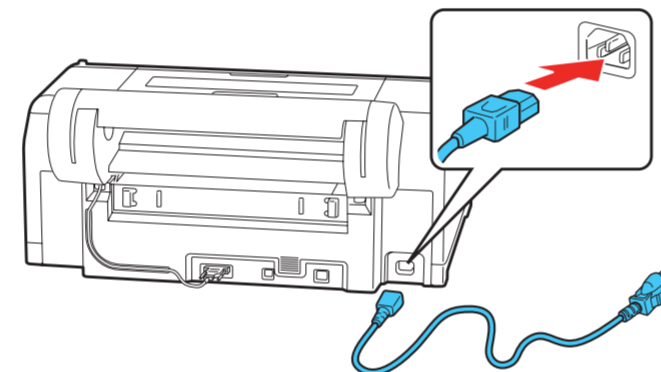


7 Remove the tape from the back of the printer.



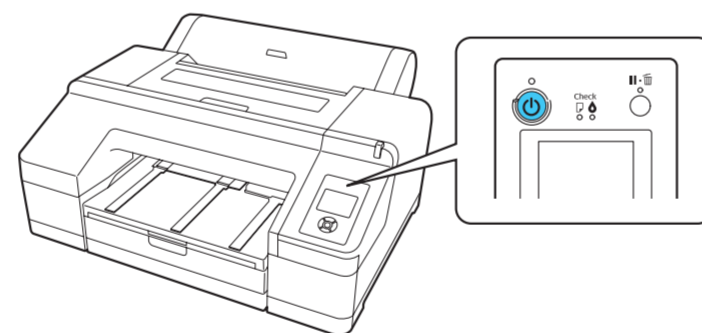
Turn on and configure

1 Connect the power cable.



Caution: Do not connect the printer to your computer yet.

2 Press the power button to turn on the printer.



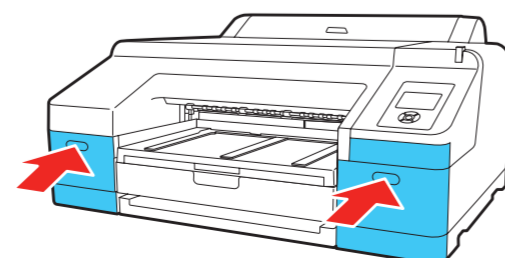
3 Select the ink set that was included with your printer on the control panel.

- Note:**
- This setting cannot be changed once the initial ink charging process begins.
 - Initialization takes about one minute. Do not install ink cartridges before this process is complete.

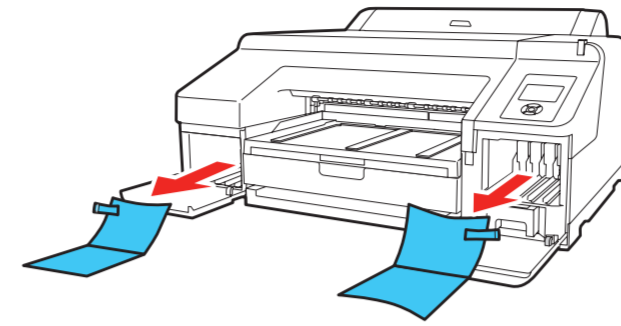
Install ink cartridges

Use the ink cartridges that came with your printer for initial ink charging.

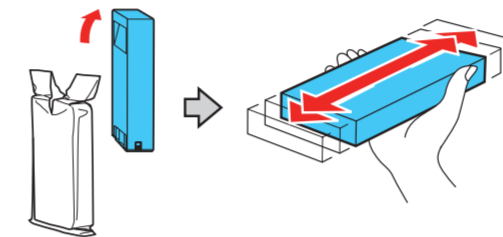
1 Press the left and right ink compartment covers to open them.



2 Remove the packing materials inside the ink compartments.

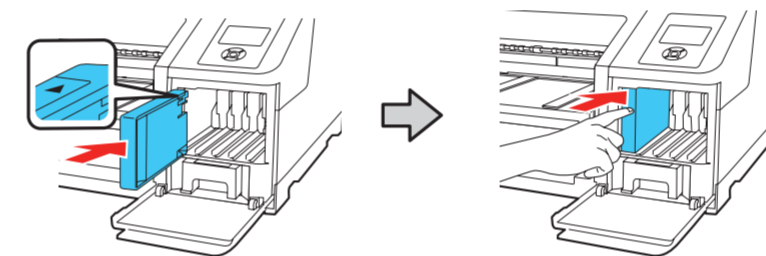


3 Remove the ink cartridges from their packages, then gently shake each cartridge for about 15 seconds.

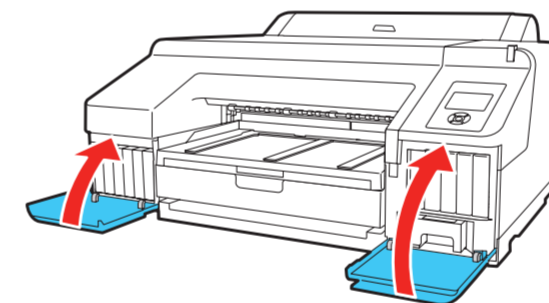


Caution: Do not touch the green chip on the cartridge.

4 Insert the cartridges in the slot for each color. Push the cartridges in until they click.



5 Close the ink cartridge covers.



6 The printer begins charging the ink. This takes about 20 minutes. Do not turn off the printer, load paper, or open any covers until the process is complete.

Caution: Don't turn off or interrupt the printer while the ink is charging or you'll waste ink.

Note:

- The printer is designed for use with Epson® cartridges only, not third-party cartridges or ink.
- The cartridges included with the printer are designed for printer setup and not for resale. After some ink is used for charging, the rest is available for printing.

Load paper

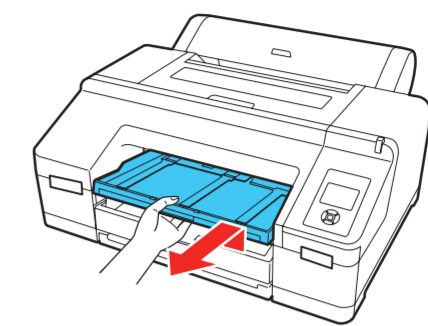
Note: For instructions on using the rear manual feed or loading thick paper, see the *Quick Reference Guide*.

Paper cassette

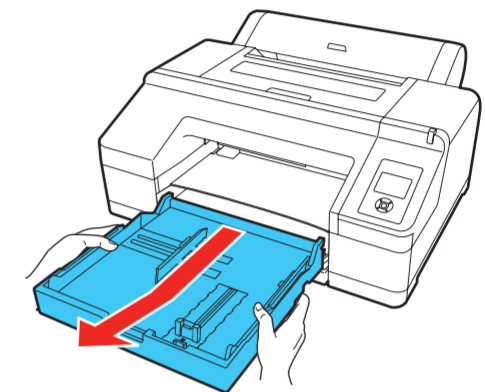
You can load a stack of paper of the same size and type in the paper cassette. For available paper types and instructions on loading paper larger than A3 size, see the online *User's Guide*.

1 On the control panel, press the left arrow button and press the down arrow button to select **Cut Sheet**. Press the **OK** button. The paper icon appears on the LCD screen.

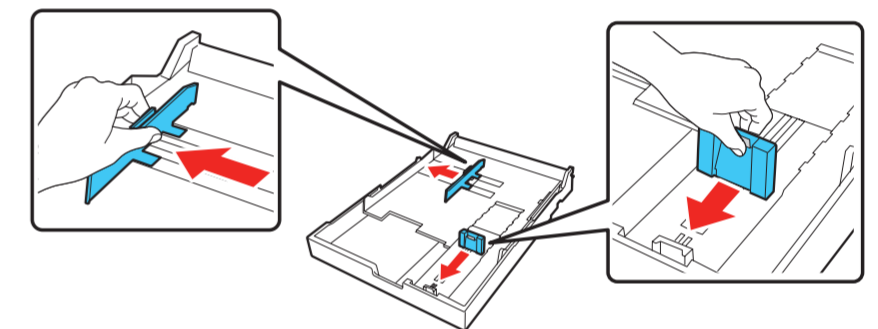
2 Lift the edge of the output tray to remove it.



3 Slide out the paper cassette, then pull it out.



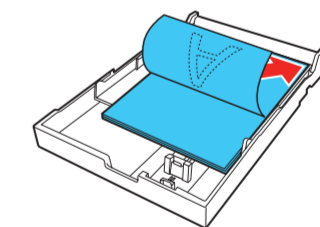
4 Slide the edge guides outward.



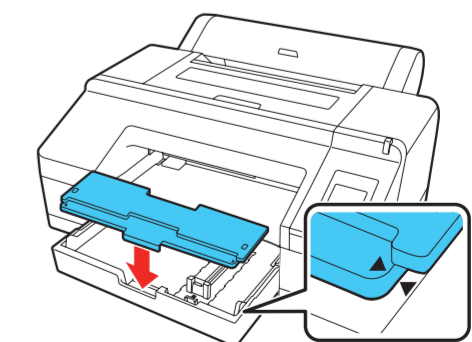
5 Thumb through a stack of paper, then gently tap it on a flat surface to even the edges.



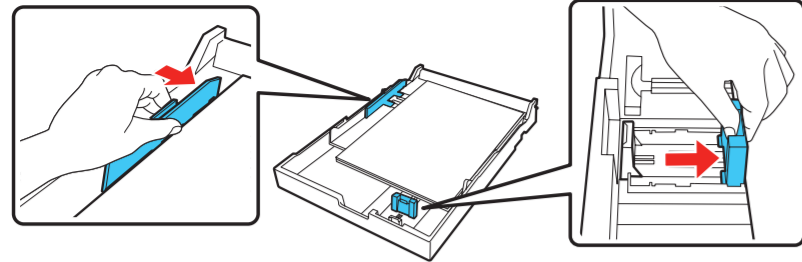
6 Load the paper with the printable side facedown and short edge first. Place the paper all the way back in the paper cassette and next to the right edge. Make sure the paper fits under the arrow on the left edge guide.



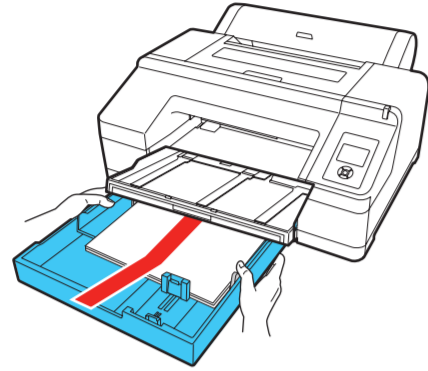
Note: When loading paper sized 13x19" or larger, make sure you install the paper cassette cover to prevent dust from entering the cassette.



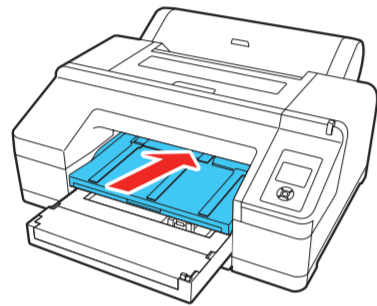
- 7 Slide the edge guides against the paper, but not too tightly.



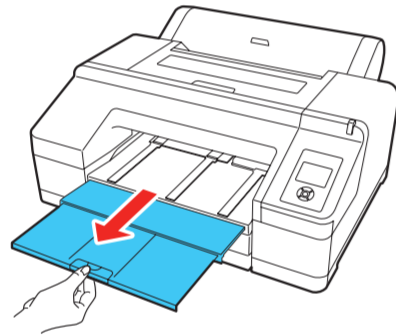
- 8 Insert the paper cassette. Push it firmly into the printer.



- 9 Replace the output tray.



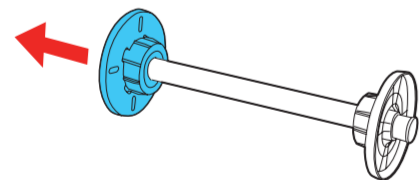
- 10 Extend the output tray to adjust its length to fit your paper size.



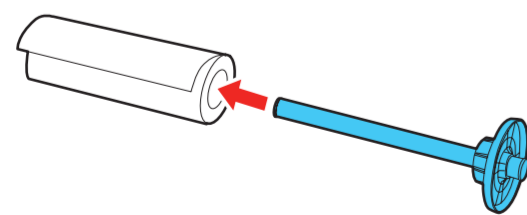
Roll paper

Depending on the size of the roll paper core (2 inches or 3 inches), you may need to mount or remove the core adapter from the spindle. To perform borderless printing, you may need to install the spacer. See the online *User's Guide* for more information and instructions.

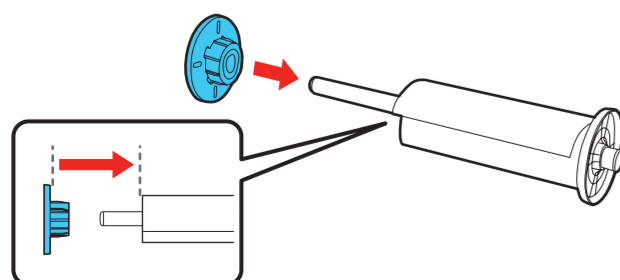
- 1 Remove the black paper stop off the end of the spindle.



- 2 Position the roll as shown, then slide it onto the spindle. The gray end should be on the right with the paper unwinding from the top. Make sure the roll is pushed all the way to the end of the spindle.

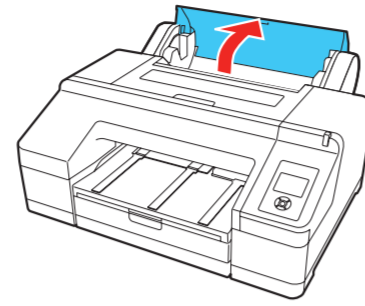


- 3 Firmly push the black paper stop back onto the spindle.

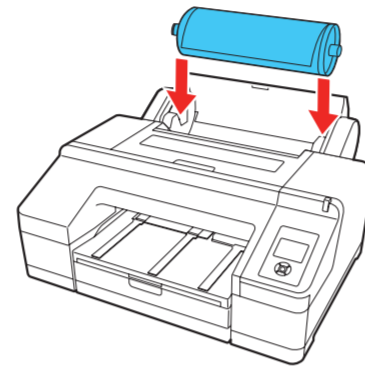


- 4 Make sure the paper source setting is selected for roll paper. Press the ◀ button on the control panel. Press the ▼ button to select **Roll Paper/Cut** or **Roll Paper/No Cut**, then press the **OK** button.

- 5 Open the roll paper cover.

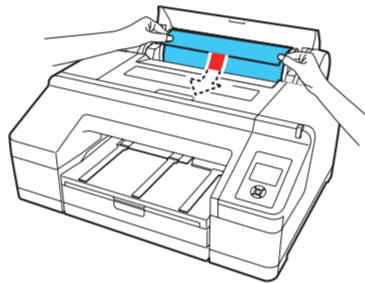


- 6 Place the roll paper in the printer as shown (the black end of the spindle goes on the left).



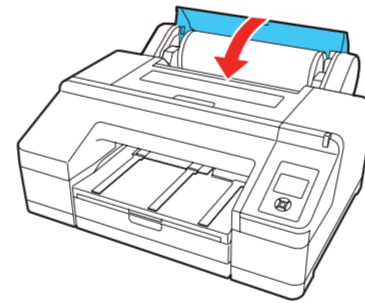
- 7 Press the % button on the control panel.

- 8 Insert the leading edge of the roll paper into the roll paper feeder until the message on the LCD screen changes to "Press the % button."



- 9 Press the % button. The printer automatically feeds the paper to the printing position.

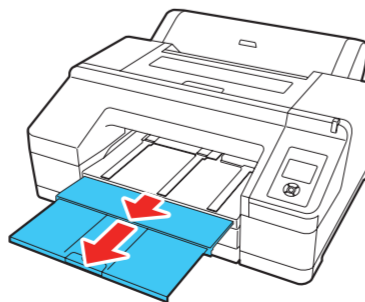
- 10 Close the roll paper cover.



Note: Always keep the roll paper cover closed to prevent dust from entering the printer.

- 11 On the control panel, select **Yes** to use the displayed media type setting or **No** to choose a new setting.

- 12 Slide out the output tray. Do not raise the paper stopper. If the paper stopper is raised while printing, the paper may not eject correctly.



Install software

Note: An Internet connection is required to obtain the printer software.

- 1 Make sure the printer is **NOT CONNECTED** to your computer.

Windows: If you see a Found New Hardware screen, click **Cancel** and disconnect the USB cable.

- 2 Download and run your product's software package:
www.epson.com/support/p5000 (U.S.)
www.epson.ca/support/p5000 (Canada)

- 3 Follow the instructions on the screen to run the setup program.

Mac: Make sure you install Software Updater to receive firmware and software updates for your product.

- 4 When you see the Select Your Connection screen, select one of the following:

- **Direct USB connection**
Make sure you have a USB cable (not included).
- **Wired network connection**
Make sure you have an Ethernet cable (not included).

Any problems?

Network setup was unsuccessful.

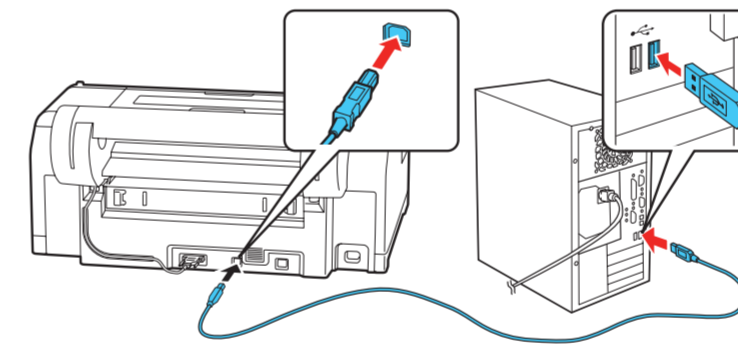
If you see a firewall alert message, click **Unblock** or **Allow** to let setup continue.

The printer's screen is dark.

Make sure your product is turned on, and press any button to wake it from sleep mode.

Setup is unable to find my product after connecting it with a USB cable.

Make sure your product is on and securely connected as shown:



Any questions?

Quick Reference Guide

Basic information and troubleshooting.

User's Guide

Windows: Click the icon on your desktop or Apps screen to access the online *User's Guide*.

Mac: Click the icon in Applications/Epson Software/Guide to access the online *User's Guide*.

If you don't have a User's Guide icon, go to the Epson website, as described below.

Technical support

Visit www.epson.com/support (U.S.) or www.epson.ca/support (Canada) and search for your product to download drivers, view manuals, get FAQs, or contact Epson.

Call (562) 276-1305 (U.S.) or (905) 709-3481 (Canada), 6 AM to 6 PM, Pacific Time, Monday through Friday. Days and hours of support are subject to change without notice. Toll or long distance charges may apply.

Recycling

Epson offers a recycling program for end of life hardware and ink cartridges. Please go to www.epson.com/recycle (U.S.) or www.epson.ca/recycle (Canada) for information on how to return your products for proper disposal.

Need paper and ink?

Ensure peak performance and brilliant results with Genuine Epson Ink and specialty papers, engineered specifically for Epson printers. Find Genuine Epson Ink and specialty papers at www.epson.com (U.S. sales) or www.epson.ca (Canadian sales) and at Epson authorized retailers. Call 800-GO-EPSON (800-463-7766) in the U.S. or 800-807-7766 in Canada.

DESIGNED for
EXCELLENCE™
Epson printers, ink and specialty papers.

Epson SureColor P5000 Series replacement ink cartridges

| Color | Part number |
|-----------------------|-------------|
| ● Photo Black | T9131 |
| ● Cyan | T9132 |
| ● Vivid Magenta | T9133 |
| ● Yellow | T9134 |
| ● Light Cyan | T9135 |
| ● Vivid Light Magenta | T9136 |
| ● Light Black | T9137 |
| ● Matte Black | T9138 |
| ● Light Light Black* | T9139 |
| ● Orange | T913A |
| ● Green | T913B |
| ● Violet** | T913D |

*Standard and Designer Editions only
**Commercial Edition only



EPSON and SureColor are registered trademarks and EPSON Exceed Your Vision is a registered logomark of Seiko Epson Corporation. Designed for Excellence is a trademark of Epson America, Inc.

Mac is a trademark of Apple Inc., registered in the U.S. and other countries.

General Notice: Other product names used herein are for identification purposes only and may be trademarks of their respective owners.

Epson disclaims any and all rights in those marks.

This information is subject to change without notice.

© 2016 Epson America, Inc., 11/16

Printed in U.S.A.

CPD-52919