

Epson® SureColor® F2100 Series

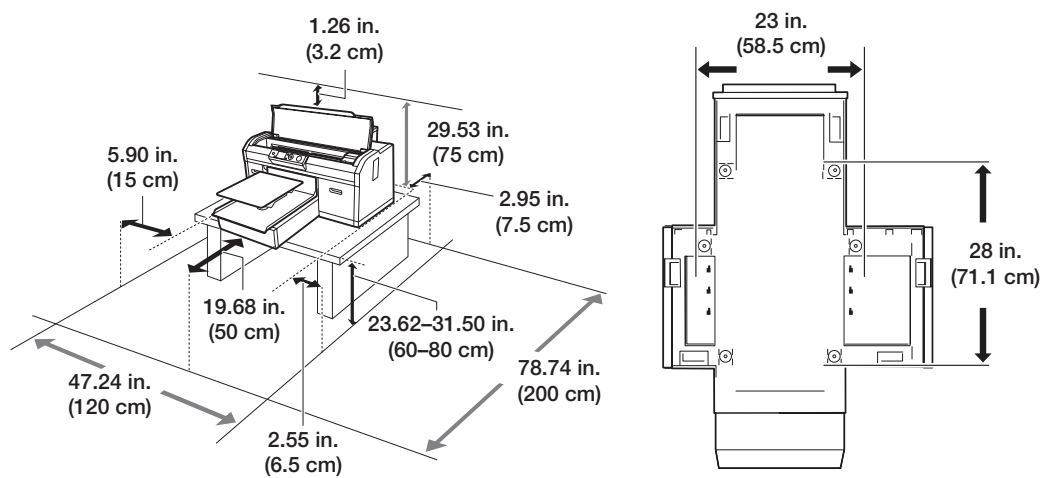
Start Here

Read these instructions before using your product.

Choose a Location for the Printer

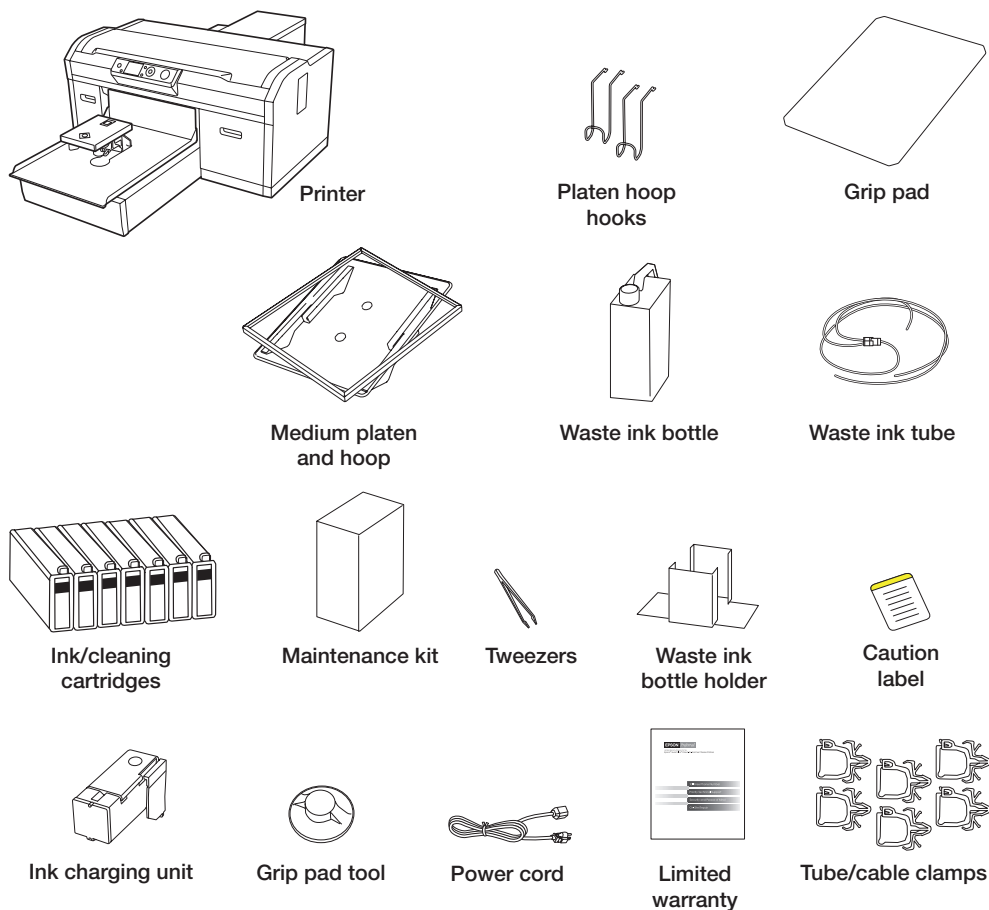
Choose a location for the printer that is near a wall outlet where the plug can be easily unplugged. Avoid places subject to rapid changes in temperature and humidity. Also keep the printer away from direct sunlight, strong light, or heat sources.

Make sure to place the printer on a flat, stable surface with enough space on all sides (see illustrations below). The surface supporting the printer should be wider than the space between the rubber feet on the bottom of the printer, at least 2 feet (60 cm) off the ground, and capable of supporting at least 220 pounds (100 kg).



Unpack

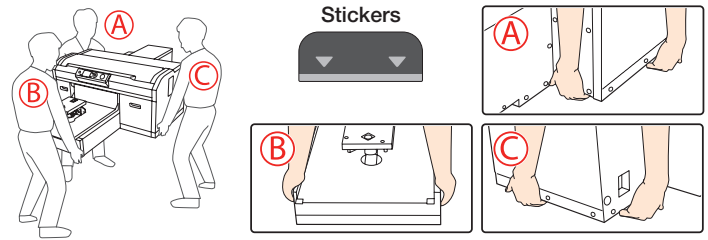
1 Make sure you have these items:



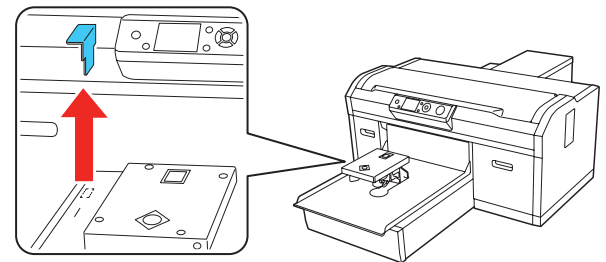
Note: See the online *User's Guide* for information on installing the grip pad, using the grip pad tool, installing the platen hoop hooks, and using the maintenance kit and tweezers.

2 Remove all the packaging materials and tape. Check carefully for all the tape inside and outside the printer and platen.

WARNING: The printer weighs about 185 pounds (84 kilograms) and requires three people to lift and move it. Make sure to grip the printer where indicated by the gray stickers as shown in the illustration. When moving the printer, do not tilt it more than 10 degrees.

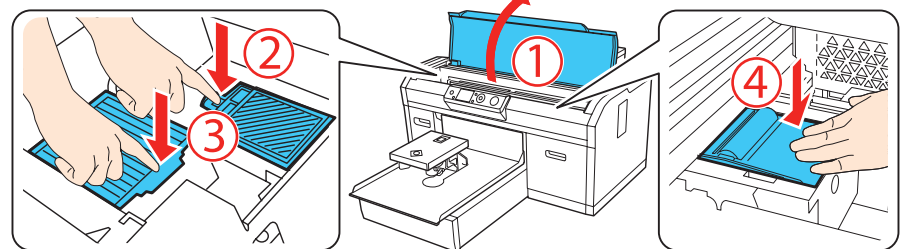


3 Remove the carriage lock and store it in a safe place.



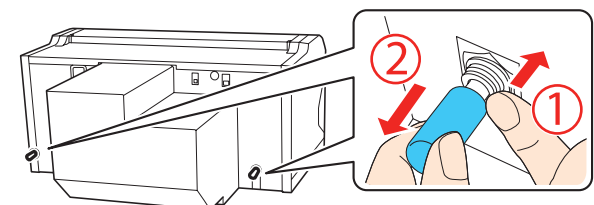
Note: Do not throw the carriage lock away; you will need it if you transport the printer.

4 Open the printer cover and press down on the parts as shown to make sure they are secure. Then close the printer cover.



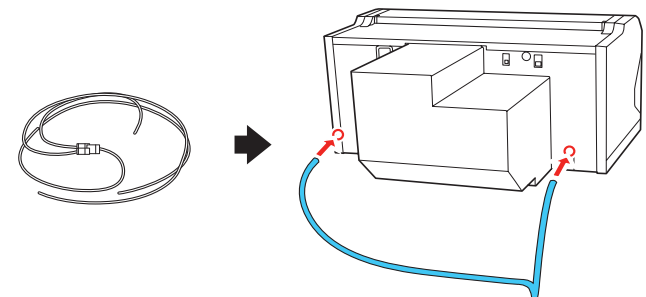
Assemble the Printer

1 Remove the plugs from the waste ink outlets on the back of the printer and store them in a safe place.



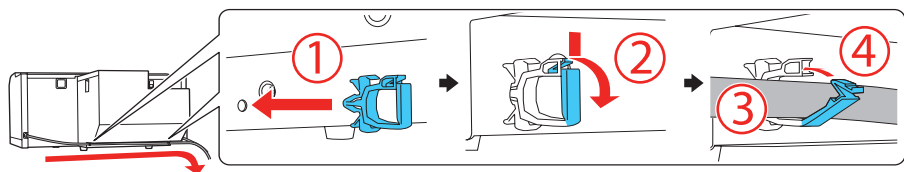
Note: Do not throw the plugs away; you will need them if you transport the printer.

2 Connect the waste ink tube. Make sure that the longer end of the tube is connected to the waste ink outlet on the left side and the shorter end is connected to the waste ink outlet on the right side.

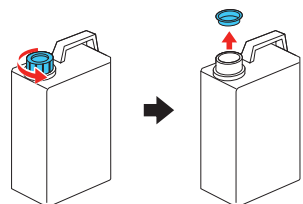


Note: Make sure the tubes point downward and are not twisted to ensure proper ink drainage.

3 Attach two tube clamps to the left and right sides on the back of the printer and route the waste ink tube through the clamps as shown.

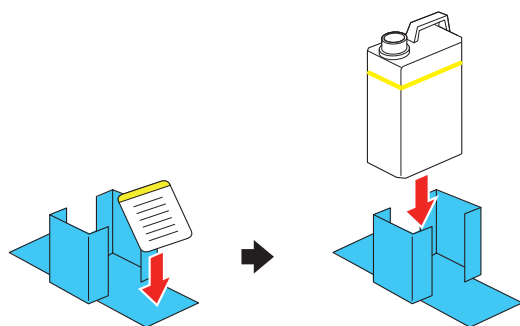


4 Remove the outer and inner caps from the waste ink bottle and store them in a safe place.

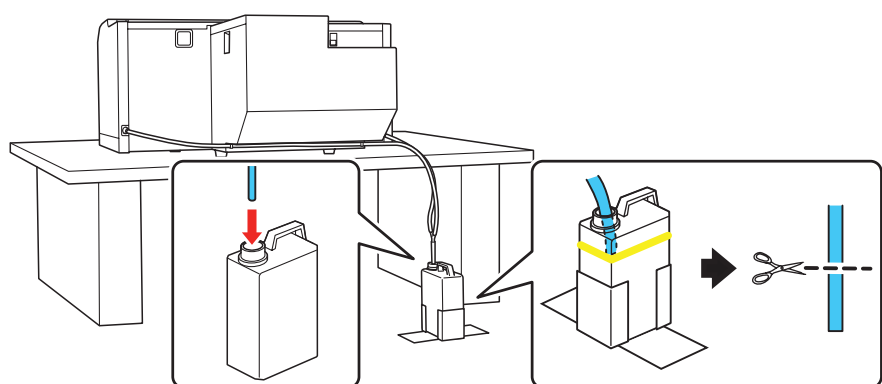


Note: Do not throw the caps away; you will need them when disposing of the waste ink.

5 Place the caution label for your language over the English label, if necessary. Then, insert the waste ink bottle into the waste ink bottle holder. The bottle and holder should be placed in an area lower than the printer so that the waste ink can flow straight down.

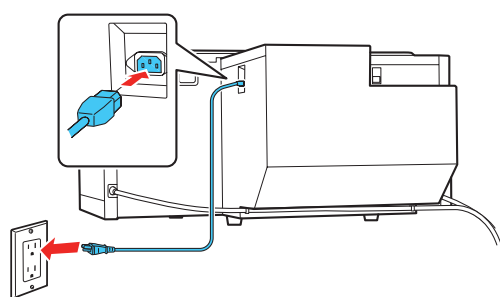


6 Insert the waste ink tube into the waste ink bottle. The tube should curve toward the bottle and straight down as shown.



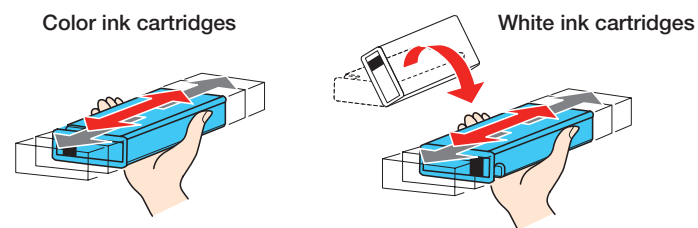
Make sure that the tube sits above the yellow line indicated on the outside of the bottle. If the tube is too long, cut the end to the appropriate length.

7 Connect the power cord. (Do not connect the printer to your computer yet.)



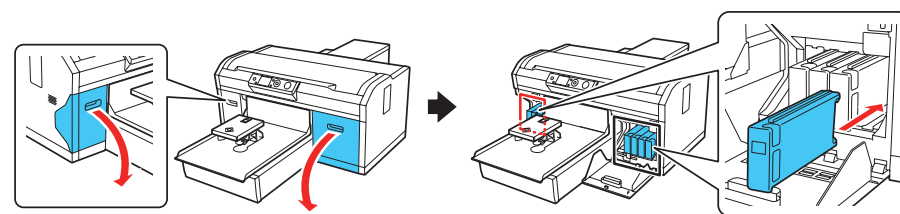
Install Ink Cartridges

1 Remove the ink cartridges from their packages. Gently shake each ink cartridge for about 15 seconds; white ink cartridges need to be shaken on both sides. You do not need to shake the cleaning cartridge.



Caution: Do not touch the green chip on top of the cartridge.

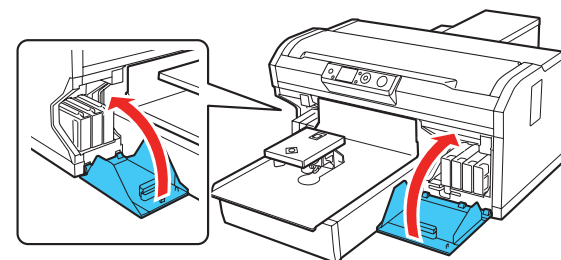
2 Open the ink covers and install each cartridge into the correct slot for its color.



Left ink bay			Right ink bay			
Slot 1	Slot 2	Slot 3	Slot 4	Slot 5	Slot 6	Slot 7
WH	WH	Y	M	C	BK	CL*

*Cleaning cartridge

3 Close the ink covers.



4 Press the  button on the control panel.

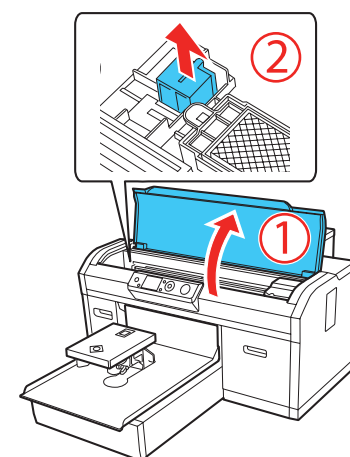
5 Follow the prompts to select **Language**, **Date & Time**, and unit of measurement.

6 Select **White Ink/Color Ink** and press the **OK** button.

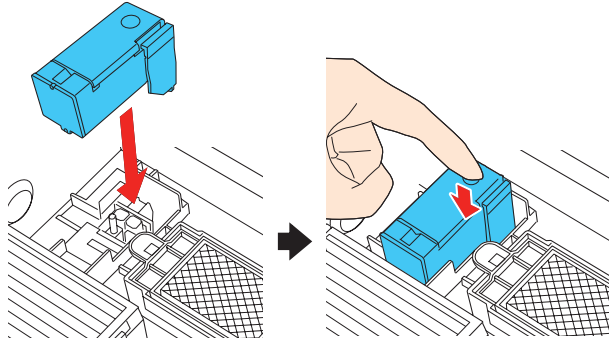
7 Select **Yes** and press the **OK** button.

8 Press the **OK** button at each of the confirmation prompts.

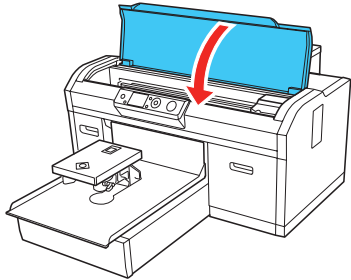
9 Open the printer cover. Remove the ink charging cover and set it aside. Press the **OK** button.




- 10** Install the ink charging unit and push it down until it clicks into place. Press the **OK** button.



- 11** Close the printer cover. Press the **OK** button.

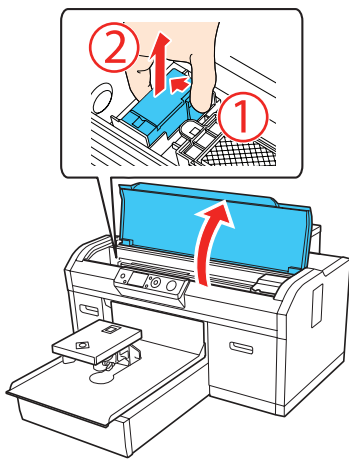


- 12** The printer starts charging the ink. This takes about 33 minutes. The LCD displays a message when the charging is complete.

Caution: Do not turn off or unplug the printer while the  light is flashing. Also, do not open the ink covers during the charging process.

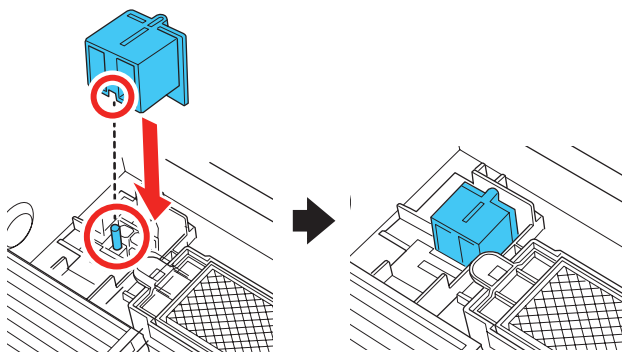
Note: The first time you install ink cartridges, the printer uses some ink to charge the printing system, so print yields may be lower with the first cartridges. Subsequent ink cartridges will last for their full rated life.

- 13** Open the printer cover again. Press the tab on the ink charging unit and pull it out to remove it. Press the **OK** button.

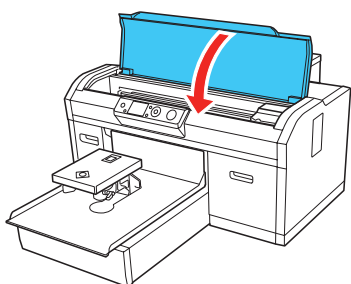


Note: See the online *User's Guide* for disposal instructions for the ink charging unit.

- 14** Replace the ink charging cover that was removed in step 9. Press the **OK** button.



- 15** Close the printer cover. Press the **OK** button.



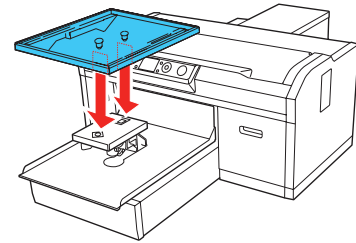
- 16** The printer starts a cleaning cycle. This takes about 10 minutes. The LCD displays a message when cleaning is complete.

Install Software & Drivers

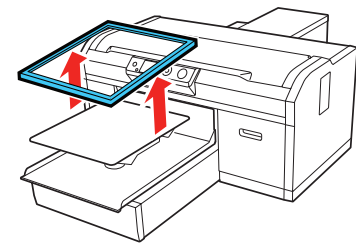
- 1 Go to www.epson.com/support/f2100 (U.S.) or www.epson.ca/support/f2100 (Canada) to download the software and utilities.
- 2 After you install the software, open the Epson Control Dashboard and check for a firmware update.

Perform Nozzle Check

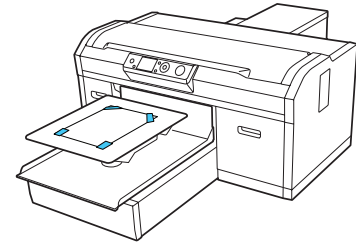
- 1 Attach the platen as shown.



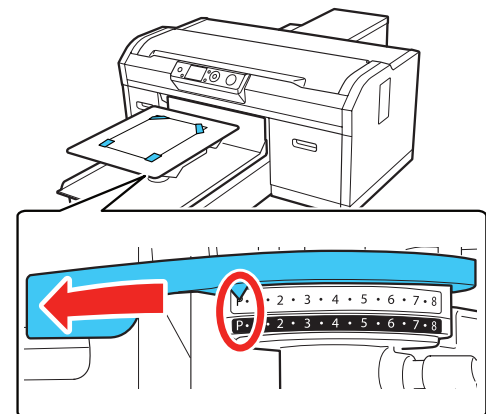
- 2 Remove the platen's hoop.





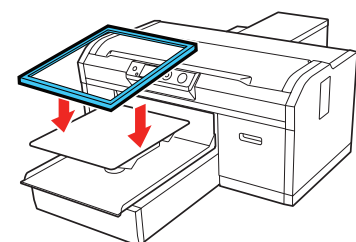
- 3 Place one sheet of letter- or A4-size plain paper on the center of the platen. Secure the corners with tape.



- 4 Make sure the height adjustment lever is at the **P** position.



- 5 Press the  button on the control panel. The Maintenance menu is displayed.
- 6 Press the  button to select **Nozzle Check**.
- 7 Press the **OK** button twice to print a nozzle check pattern.
- 8 Check the pattern. If there are no gaps, the nozzles are clean. If there are gaps in the pattern, refer to the online *User's Guide* for instructions on cleaning the print head.
- 9 Replace the platen's hoop.



Product Support

Online *User's Guide*

Instructions for using your printer and maintenance tools.

On-screen help with your software

Select **Help** or **F1** when you're using your Garment Creator software.

Epson technical support

Visit www.epson.com/support/f2100 (U.S.) or www.epson.ca/support/f2100 (Canada) to download software and utilities, view manuals, get FAQs, or contact Epson.

Epson provides technical support and information on the installation, configuration, and operation of professional printing products through the Epson PreferredSM Limited Warranty Plan. Dial (888) 377-6611, 6 AM to 6 PM, Pacific Time, Monday through Friday. Days and hours of support are subject to change without notice. Before you call, make sure you have your:

- Printer serial number: _____
- Proof of purchase and date: _____

Note: If you experience difficulty with the toll-free line, call (562) 276-1305.

Recycling

Epson offers a recycling program for end of life hardware and ink cartridges. Please go to www.epson.com/recycle (U.S.) or www.epson.ca/recycle (Canada) for information on how to return your products for proper disposal.

Need Ink?

You can purchase ink from an Epson DTG authorized reseller. To find the nearest reseller, call 800-GO-EPSON (800-463-7766).

Epson SureColor F2100 Series replacement ink cartridges

Color	Part number
● Black	T725100
● Cyan	T725200
● Magenta	T725300
● Yellow	T725400
○ White	T725A00
Cleaning cartridge	T736000

EPSON and SureColor are registered trademarks and EPSON Exceed Your Vision is a registered logomark of Seiko Epson Corporation. Epson Preferred is a service mark of Epson America, Inc.

General Notice: Other product names used herein are for identification purposes only and may be trademarks of their respective owners. Epson disclaims any and all rights in those marks.

This information is subject to change without notice.

© 2018 Epson America, Inc., 1/18

Printed in USA

CPD-54911