

Epson Projector Professional Tool Operation Guide

Contents

Introduction to the Epson Projector Professional Tool Software	5
Epson Projector Professional Tool Features	5
Projector Panel Feature	6
Lens Control Feature	6
Geometry Correction Feature	6
Edge Blending and Color Uniformity Features	7
Tiling Assist Feature	7
Screen Matching Feature	8
Color Calibration Feature	8
Projector Operations or Settings	9
Apply Settings to Multiple Projectors Simultaneously	9
Monitoring Feature	9
Setting Up the Software for the First Time	10
Installing the Software	10
System Requirements	10
Installing the Epson Projector Professional Tool Software	11
Creating and Adjusting Projector Projects	12
Creating a Project	12
Adding a Projector to a Project	14
Adjusting the Layout of the Projector Panel	17
Adjusting Projected Images	19
Projector Adjustment Options on the Software Screen	19
Screen Summary	20
Lens Control	21
Initial Setting	22
Edge Blending	24
Geometry Correction	25
Image	27
Black Level	30
Scale	32

Blanking.....	32
Adjusting the Screen with the Tiling Assist Feature.....	33
Operating Conditions for the Tiling Assist Wizard.....	38
Solving Tiling Assist Problems.....	38
Monitoring Projectors	40
Projector Monitoring Views.....	40
Appendix.....	42
Updating and Uninstalling the Software	42
Getting the Latest Version of the Software	42
Uninstalling the Epson Projector Professional Tool Software (Windows 7)	42
Uninstalling the Epson Projector Professional Tool Software (Windows 8.x/Windows 10).....	43
Notices	43
Copyright Notice	43
About Notations	44
General Notice.....	44
Copyright Attribution	44

Introduction to the Epson Projector Professional Tool Software

See the information here to learn more about the Epson Projector Professional Tool software.

[Epson Projector Professional Tool Features](#)

Epson Projector Professional Tool Features

The Epson Projector Professional Tool software allows you to adjust and control images projected from network projectors, and monitor the status of the projectors using your computer.

Note: Depending on the firmware version, you may encounter some limitations when using this software.

[Projector Panel Feature](#)

[Lens Control Feature](#)

[Geometry Correction Feature](#)

[Edge Blending and Color Uniformity Features](#)

[Tiling Assist Feature](#)

[Screen Matching Feature](#)

[Color Calibration Feature](#)

[Projector Operations or Settings](#)

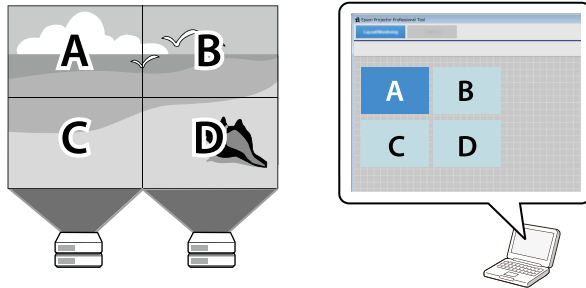
[Apply Settings to Multiple Projectors Simultaneously](#)

[Monitoring Feature](#)

Parent topic: [Introduction to the Epson Projector Professional Tool Software](#)

Projector Panel Feature

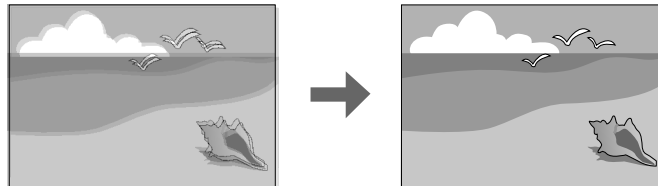
You can visually select the projector you want to adjust and control on your computer screen by arranging the projector panel according to the actual projected image.



Parent topic: [Epson Projector Professional Tool Features](#)

Lens Control Feature

You can adjust the focus or the position of the lens installed on the projector.

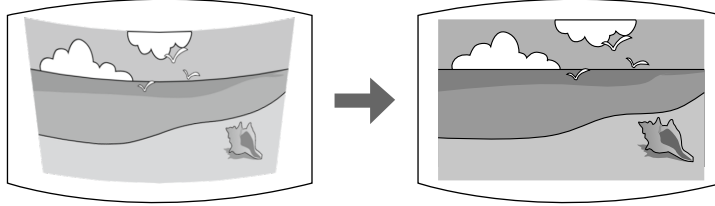


Parent topic: [Epson Projector Professional Tool Features](#)

Geometry Correction Feature

You can correct image distortion when projecting on a curved or right-angled screen using the **Geometry Correction** feature. You can also undo and redo the adjustment.

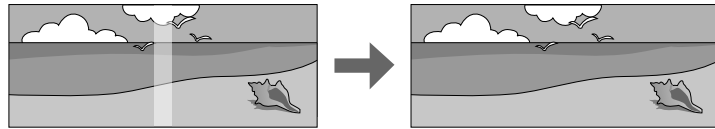
You can also export the current **Correction Type** setting value to a file and import it to another projector.



Parent topic: [Epson Projector Professional Tool Features](#)

Edge Blending and Color Uniformity Features

You can create a single seamless image from multiple projectors using the **Edge Blending** feature, and you can reduce color tone differences between images using the **Color Uniformity** feature.



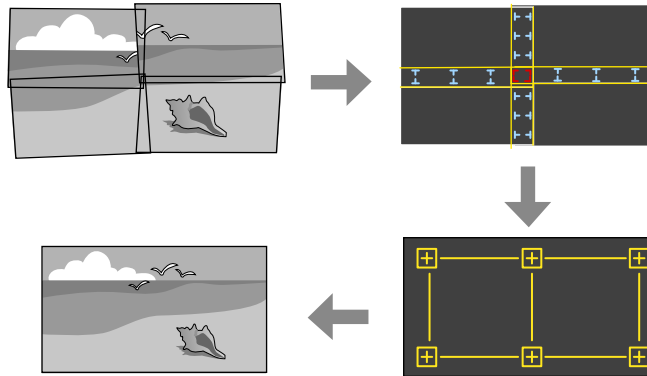
Parent topic: [Epson Projector Professional Tool Features](#)

Tiling Assist Feature

You can easily and quickly create a single seamless image from multiple projectors when projecting on a flat screen using the **Tiling Assist** wizard (supported models only).

You first select an **Edge Blending** value and adjust the size and position of your projected image. Then the projector automatically calibrates the image to correct any distortion.

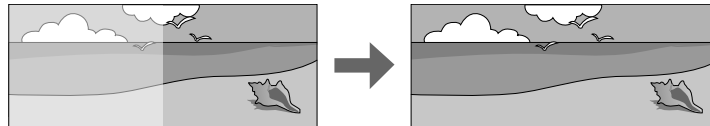
You can then manually adjust the outline of the projected image and correct any other settings as needed for a seamless result.



Parent topic: [Epson Projector Professional Tool Features](#)

Screen Matching Feature

You can correct differences in the tint and brightness between projectors to optimize the display quality of the combined image.



Parent topic: [Epson Projector Professional Tool Features](#)

Color Calibration Feature

The Epson Projector Professional Tool software automatically adjusts the color tone of the entire screen based on the default color settings. This compensates for deterioration in color tone over time.

Parent topic: [Epson Projector Professional Tool Features](#)

Projector Operations or Settings

You can control the basic projector operations such as turning the power on or off, and displaying a **Test Pattern** from your computer screen.

You can also select projector settings necessary for the projector installation.

Parent topic: [Epson Projector Professional Tool Features](#)

Apply Settings to Multiple Projectors Simultaneously

You can apply the following settings to multiple projectors:

- **Power/Source**
- **Shutter**
- **On Screen**
- **Test Pattern**
- All features in the **Initial Setting** tab
- All features in the **Edge Blending** tab
- All features in the **Image** tab

Parent topic: [Epson Projector Professional Tool Features](#)

Monitoring Feature

You can visually check the status of one or more projectors, such as the power, current input source, or other projector status information. This lets you monitor projector operations and receive alerts should any errors or warnings occur.

Parent topic: [Epson Projector Professional Tool Features](#)

Setting Up the Software for the First Time

Follow these instructions before connecting a computer to the projector over a network.

[Installing the Software](#)

Installing the Software

Check the system requirements necessary to run the software, and then install the software.

Note: Depending on your projector's firmware version, you may see this message.

*** This version of firmware does not support all of the features in this software version. Please see the user's manual for details.**

Upgrading your firmware to the latest version may enable you to use all the functions of this software. See the sections in this guide covering software functions and their limitations.

[System Requirements](#)

[Installing the Epson Projector Professional Tool Software](#)

Parent topic: [Setting Up the Software for the First Time](#)

System Requirements

Your computer must meet the following system requirements to use the Epson Projector Professional Tool software.

Requirement	Windows
Operating system	Windows 7 <ul style="list-style-type: none">• Ultimate (32- and 64-bit)• Enterprise (32- and 64-bit)• Professional (32- and 64-bit)• Home Premium (32- and 64-bit)• Home Basic (32-bit)

Requirement	Windows
	Windows 8.1 <ul style="list-style-type: none"> • Windows 8.1 (32- and 64-bit) • Windows 8.1 Pro (32- and 64-bit) • Windows 8.1 Enterprise (32- and 64-bit) Windows 10 <ul style="list-style-type: none"> • Windows 10 Home (32- and 64-bit) • Windows 10 Pro (32- and 64-bit) • Windows 10 Enterprise (32- and 64-bit)
CPU	Intel Core2Duo 1.2GHz or faster (Intel Core i3 or faster recommended)
Memory	1GB or more (2GB or more recommended)
Display	Resolution between 1280 × 768 and 1920 × 1080

Parent topic: [Installing the Software](#)

Installing the Epson Projector Professional Tool Software

Download and install the Epson Projector Professional Tool software on your computer.

Visit epson.com/support (U.S.) or epson.ca/support (Canada) and select your projector to download the latest version of Epson Projector Professional Tool.

Note:

- You need administrator authority to install the Epson Projector Professional Tool software.
1. Download the latest version of the Epson Projector Professional Tool software.
 2. Double-click **EPPT_Setup.exe** to install the software.

Parent topic: [Installing the Software](#)

Creating and Adjusting Projector Projects

Follow these instructions to create a projector project, register projectors to the project, and adjust the image layout.

[Creating a Project](#)

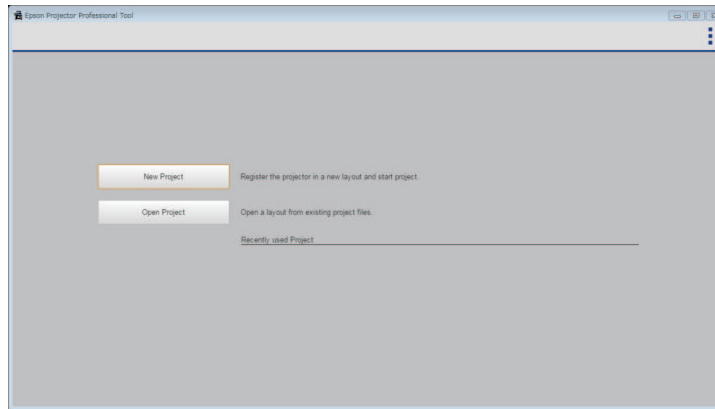
[Adding a Projector to a Project](#)

[Adjusting the Layout of the Projector Panel](#)

Creating a Project

You can save projector connection information and the layout of the projected image as a project. Creating separate projects allows you to save projector settings depending on the installation environment.

When you start the Epson Projector Professional Tool software, the following screen is displayed.




- Select **New Project** to create a new project to register projectors you want to control.
- Select **Open Project** to open the previously created project.
- Select a previously created project from the **Recently used Project** list.

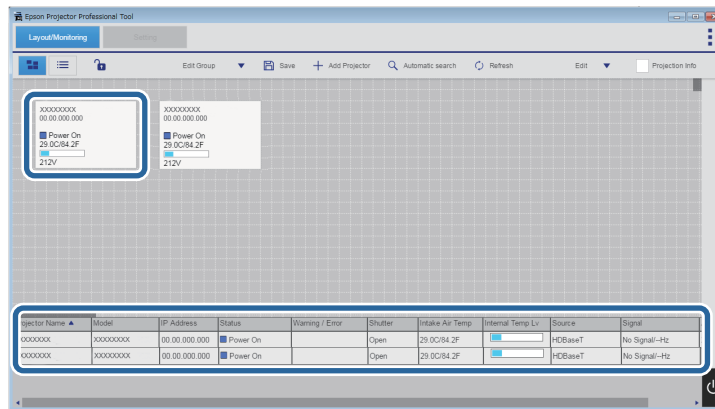
Attention:

- If you change your computer's network adapter settings before starting the Epson Projector Professional Tool software, the software may not start. Restart your computer first.

- If the MAC address is changed after creating a project, an unintended projector may be read in the project.

Note: To change the language or color theme for the software, select  in the upper right corner and select the **Option** setting.

When you create a project, the software automatically searches for network projectors on the same subnet and displays up to 50 detected projectors as panels and a list on the **Layout/Monitoring** tab.




Each projector panel or the projector list on the bottom contains the following information:

- Projector name
- IP address
- Model name
- System error
- Shutter status
- Projector status
- Intake air temperature
- Internal temperature level
- Input source
- Signal/frequency

- AC voltage (supported models only)

Note:

- Depending on the software setting, the information displayed on the projector panel may vary.
- The information displayed on the projector panel or projector list updates automatically at an interval you set. To change the interval, select  in the upper right corner and select the **Option** setting. You can select an interval time from 5 to 60 seconds.
- If the detected projector is using an older version of the firmware, the following message is displayed.
*** This version of firmware does not support all of the features in this software version. Please see the user's manual for details.**

Parent topic: [Creating and Adjusting Projector Projects](#)

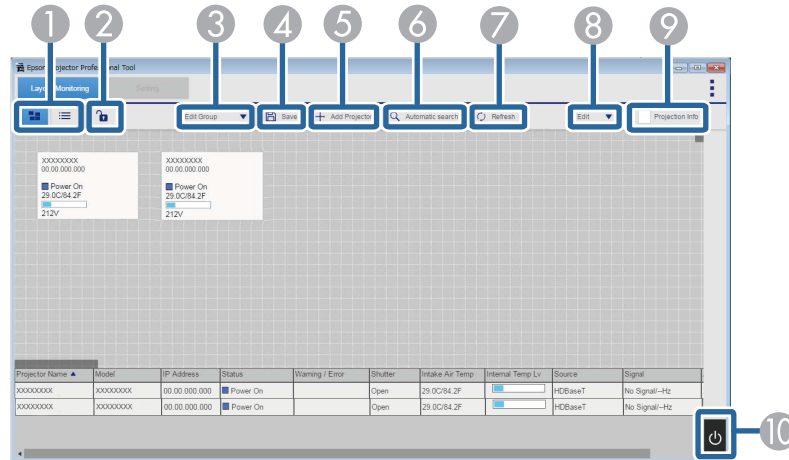
Adding a Projector to a Project



Select the projector panel you want to add to the project and select the following buttons as necessary.


Note: You can select multiple projectors in the following ways:

- Select multiple projector panels by dragging them on your computer screen.
- Select each projector panel by pressing the Ctrl + Enter keys, or the Ctrl key + the spacebar on the keyboard. (You can select and deselect a projector panel by pressing the Enter key or the spacebar each time.)

- You can zoom in or zoom out the projector panels by pressing the Ctrl key + mouse wheel.



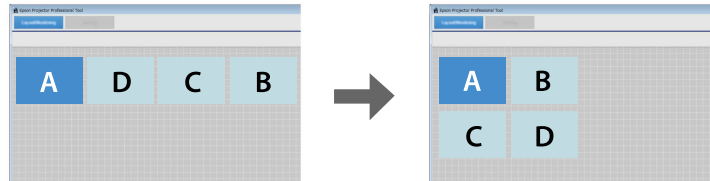
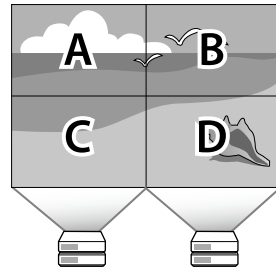
1		Switches the view between one for arranging the projector panel and another for monitoring the projectors.
2		Locks/unlocks the layout of the projector panels.
3	Edit Group	Sets up projectors in a group so you can control them simultaneously. <ul style="list-style-type: none"> Group: Creates a group of the projectors you selected. Ungroup: Removes the group of the projector you selected. Rename Group Name: Lets you edit the name of the projector group.
4	Save	Saves the projector information and the layout of the projector panel to the project file.
5	Add Projector	Adds a projector manually by specifying the projector's IP address.
6	Automatic search	Searches for network projectors on the same subnet.
7	Refresh	Updates the projector information.

8	Edit	<p>Adjusts the projector's settings.</p> <ul style="list-style-type: none"> • Rename Projector Name: Lets you edit the name of the selected projector. • Remove: Deletes the projector from the project. • Authentication: Performs authentication manually when the projector status is Not Authenticated. If you set the same password for multiple projectors, you can perform authentication for multiple projectors at one time by selecting multiple projector panels before selecting this button. If you set the default Web Control password for the projector, the projector is automatically authenticated. • Panel items: Lets you select the information which is displayed on the projector panel.
9	Projection Info	Projects the IP address and the name of the projector you selected.
10		Opens the menu to control the projector power, input source, and shutter settings.

Parent topic: [Creating and Adjusting Projector Projects](#)

Adjusting the Layout of the Projector Panel

You can adjust the layout of the projector panel by dragging and dropping the individual projector panels on your computer screens according to the actual projected image. When you select multiple projector panels, you can move them at one time.

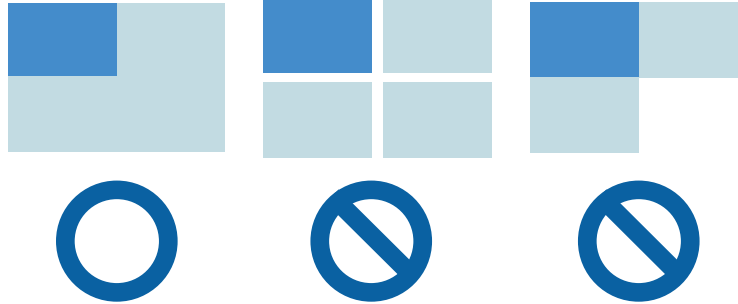


When you have finished making adjustments of the layout, select the **Save** button to save the project.

Note: When you need to group projectors so you can control **Screen Matching** or use **Tiling Assist**, make sure you arrange the panels under the following conditions:

- All the projectors must support **Screen Matching** or **Tiling Assist**.
- There are no gaps between the panels.

- The shape of the selected panels forms a rectangle.



Parent topic: [Creating and Adjusting Projector Projects](#)

Adjusting Projected Images

See the following sections to select and adjust individual projector settings on the Epson Projector Professional Tool **Setting** tab.

[Projector Adjustment Options on the Software Screen](#)

[Screen Summary](#)

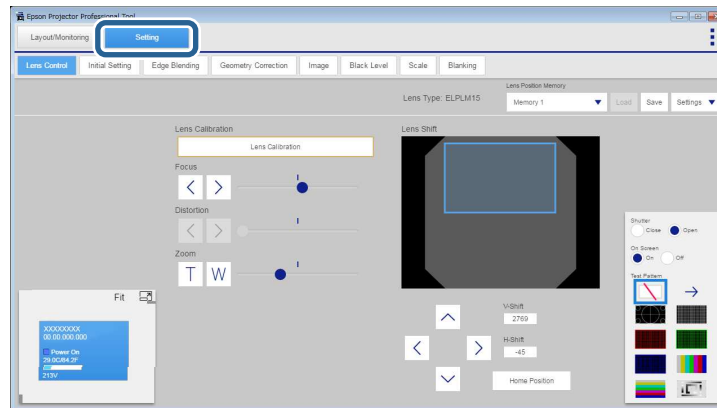
[Adjusting the Screen with the Tiling Assist Feature](#)

Projector Adjustment Options on the Software Screen

When you select the **Setting** tab, the following screen is displayed.

Select the projector you want to adjust from the list in the lower left corner of the screen. Then adjust the settings for that projector.




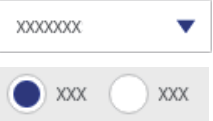

Note: To select the projector using your keyboard, press the W key to move your selection upward, the S key to move it downward, the A key to move it to the left, or the D key to move it to the right.



The following controls can apply to multiple projectors:

- **Shutter**
- **On Screen**
- **Test Pattern**

The following table describes the types and usage of main buttons on the **Setting** tab.

	Adjust the value of settings. Select and hold the button to continue adjustments until you release the button. You can also adjust the settings by moving the  button.
	Adjusts each value on the Setting tab by entering the number.
	Selects a value from the options.
	Turns the setting on or off, or displays additional instructions or information.

Attention:

- Do not adjust your projected image using the projector remote control or control panel at the same time that you adjust the image with this software. The settings displayed by the software may not reflect the actual settings. To update the displayed setting values, switch to a tab other than **Setting**, and then select the **Setting** tab again.
- Depending on the projector's status, the setting values may not be displayed on this software screen.
- If communication with the projector fails and the projector cannot receive the setting values you selected, the settings return to their original values.

Note: If you want to adjust projector menu settings that cannot be set from this software, use the Epson Web Control software. To access Epson Web Control, double-click the projector panel, select the **Advanced** option, and then log in with the user name and password below. (Depending on the firmware version, you cannot access Epson Web Control in this way.)

User name is EPSONWEB; default password is admin.

Parent topic: [Adjusting Projected Images](#)

Screen Summary

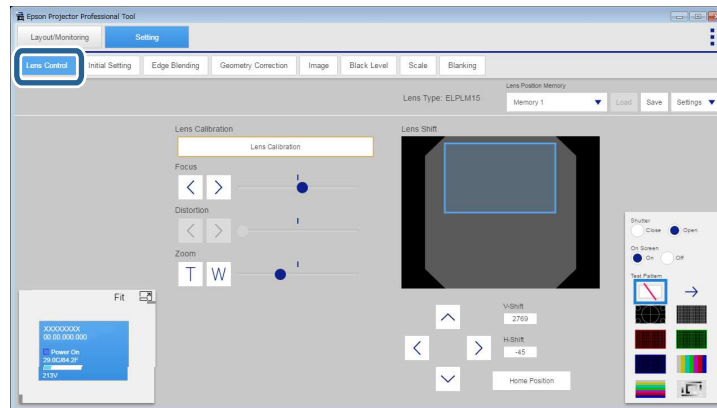
See the sections here to adjust the settings available on each tab of the **Setting** tab. See your projector *User's Guide* for details on the settings available for your projector.

Lens Control
Initial Setting
Edge Blending
Geometry Correction
Image
Black Level
Scale
Blanking

Parent topic: [Adjusting Projected Images](#)

Lens Control

You can adjust the projector's lens settings on the **Lens Control** tab.



Depending on the type of lens you installed, the available features or adjustment ranges may vary. And depending on the firmware version, the image may appear longer horizontally in the preview image than in the actual image.

Note:

- When adjusting the image height with the vertical lens shift, adjust it by moving the image from the bottom to the top. If you adjust it from the top to the bottom, the image position may move down slightly after adjusting.

- For best results, adjust the **Focus**, **Zoom**, or **Lens Shift** settings only after projecting an image for 20 minutes or more. This gives the image a chance to stabilize before you adjust it.
- You can register up to 10 **Memory** settings to save adjustments for different lens types.

Keyboard Shortcuts

When you adjust settings on the **Lens Control** tab, you can use the following keyboard commands:

Keyboard command	Function
Shift + [↑ / ↓ / ← / →]	Moves the cursor on the adjustment items.
Ctrl + [↑ / ↓ / ← / →]	Changes the adjustment value.

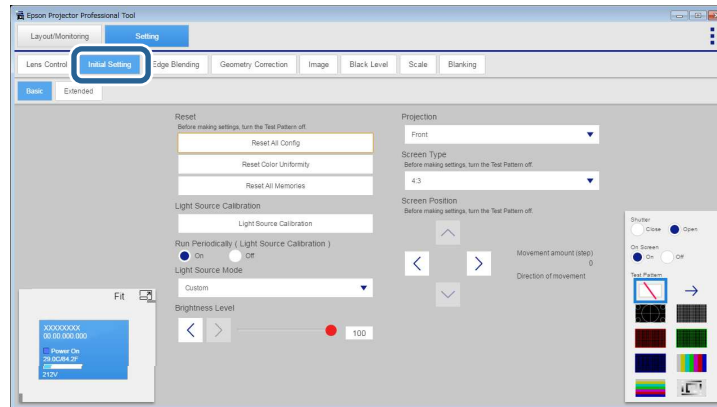
Parent topic: [Screen Summary](#)

Initial Setting

You can select the initial values for the following projector settings on the **Initial Setting** tab:

- **Light Source Calibration**
- **Light Source Mode**
- **Brightness Level**
- **Projection**
- **Screen Type**
- **Screen Position**
- **Display Background**
- **Start Up Screen**
- **Fade-in (seconds)/Fade-out (seconds)**
- **Shutter Timer**
- **Sleep Mode**
- **Standby Confirmation**
- **Indicators**

- **Beep**



You can adjust the settings for multiple projectors or groups on the **Initial Setting** tab. If you select different projector models, you can adjust only settings that are available on all selected projectors.

Note:

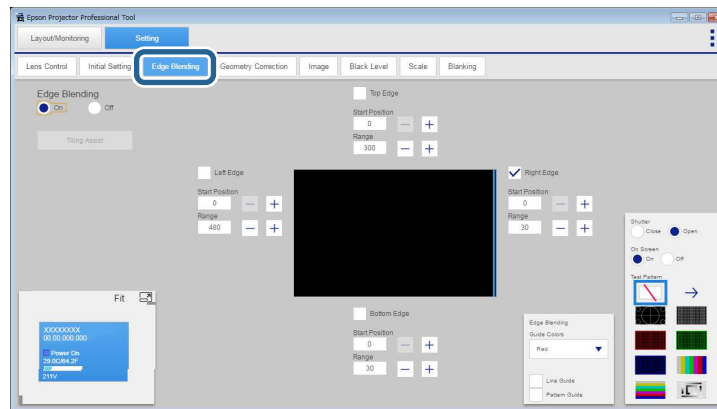
- When you set **Constant Brightness** to **On** in the projector's menu, you cannot change **Light Source Mode** settings. Double-click the projector panel and change the settings in the Epson Web Control screen.
- You can change the **Brightness Level** settings only when you set **Light Source Mode** to **Custom**.
- If you change any setting values while performing the fade-in or fade-out function, a difference might occur between the image on your computer screen and the actual projected image. Move to the other tab and return to the original tab to fix the error.
- When you reset all settings using **Reset All Config**, the following settings are not reset:
 - **Input Signal**
 - **Memory**
 - **User's Logo**
 - All settings on the **Network** menu
 - **Language**
 - **Date & Time**
 - **Panel Alignment**

- **Color Uniformity**
- **Lens Calibration**
- **Color Calibration**
- **Projector Grouping**
- **Screen Matching**
- **Color Matching**
- **HDBaseT** (supported models only)

Parent topic: [Screen Summary](#)

Edge Blending

You can use the adjustments on the **Edge Blending** tab to create a single seamless image from multiple projectors. Adjust the values to overlap the image sides as necessary.



Before using the **Edge Blending** settings, select the **Image** tab and select **Multi-Projection** as the **Color Mode** setting.

Then select the **Edge Blending** tab, set the **Edge Blending** setting to **On**, and adjust the **Top Edge/Bottom Edge/Left Edge/Right Edge**, **Start Position**, and **Range** settings as necessary to blend the images together.

When projecting on a flat screen, you can also use the **Tiling Assist** wizard to create a single seamless image from multiple projectors.

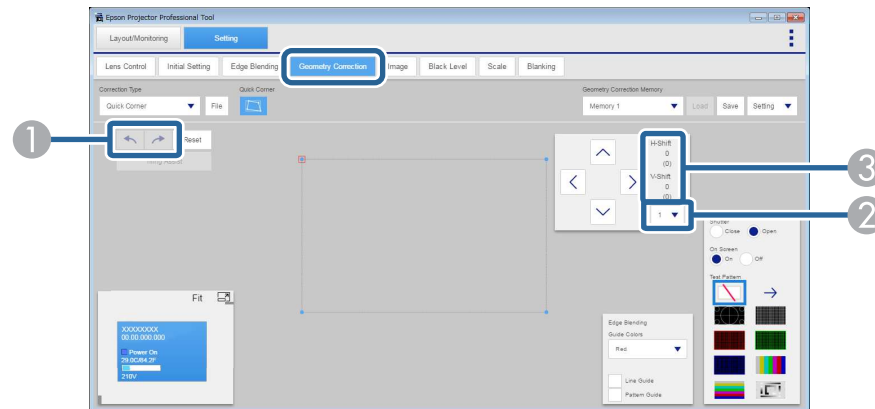
Parent topic: [Screen Summary](#)



Related tasks

[Adjusting the Screen with the Tiling Assist Feature](#)

Geometry Correction

You can correct image distortion using the settings on the **Geometry Correction** tab.



- 1 You can use  or  to undo or redo the adjustment.
- 2 You can select the interval of the point movement to fine-tune your adjustments.
- 3 Two values are shown. The top value is the relative coordinate value, which is the amount of point movement. The lower value in parentheses is the absolute coordinate value of the selected point in the panel.

For example, when you use **Quick Corner** and then switch to **Point Correction**, the absolute coordinate value changes, but the relative coordinate value does not change. In this state, if you perform **Point Correction**, the absolute coordinate value is the same in **Quick Corner** and **Point Correction**, but the relative coordinate value is different for each.

Depending on the projector model, an absolute coordinate value and a relative coordinate value may not be displayed. The amount of point movement may be displayed instead.


After you use **Curved Surface** or **Corner Wall** adjustments, you can perform **Point Correction**, and then **Quick Corner**.

When you perform **Point Correction**, you can change the grid color of the projected pattern by selecting the **Pattern Color** option. You can select and move up to 34 points simultaneously by dragging and dropping them.

When you use the **Quick Corner**, **Curved Surface** (Correct Shape), or **Corner Wall** (Horizontal Corner, Vertical Corner) settings, you can also make adjustments by dragging and dropping a point on your computer screen.

When projecting on a flat screen, you can also use the **Tiling Assist** wizard to create a single seamless image from multiple projectors.

Note:

- If a large amount of adjustment is performed, the focus may not be uniform even after making adjustments.
- When **4K Enhancement** is activated or a 4K signal is input, you cannot use **Curved Surface**, **Corner Wall**, or **Point Correction**.
- When you adjust the **Linearity** setting in the **Curved Surface** correction, you may not be able to adjust the correction point to the maximum depending on other selected correction settings.
- You can register up to three **Memory** settings for each projector to save different types of adjustments.
- You can export the current **Correction Type** setting value to a file and import it to another projector. The file can be loaded only to the same model which has same lens type, same resolution, and same version of firmware.
- Depending on the projector model, the operation speed of **Point Correction** may be slow. To improve the operation speed, try selecting  as the **Pattern Color** setting.

Keyboard Shortcuts

When you adjust settings on the **Geometry Correction** tab, you can use the following keyboard commands:

Keyboard command	Function
Tab	Moves the cursor to the next point or edge of the image.
Shift + Tab	Moves the cursor to the previous point or edge of the image.
↑ / ↓ / ← / →	Moves the cursor on the point or edge of the image in the up, down, left, or right direction.

Keyboard command	Function
Shift + [↑ / ↓ / ← / →]	Selects multiple points.
Esc	Deselects the cursor on the point.
1 - 7 (Num)	Selects how much you want to adjust at one time.
Ctrl + [↑ / ↓ / ← / →]	Adjusts the point using the increment you selected using the 1 to 7 number keys. (Press and hold the buttons to adjust more quickly.)
Ctrl + Shift + [↑ / ↓ / ← / →]	Adjusts the point by one step. (Press and hold the buttons to adjust more quickly.)
Alt + [↑ / ↓ / ← / →]	Adjusts the point by 10 steps. (Press and hold the buttons to adjust more quickly.)
Ctrl + [← / →]	Adjusts the edge of the image.
i	Initializes the point settings.
Alt + s	Registers the Memory settings.
Alt + l	Loads the Memory settings.
Ctrl + z	Undoes the adjustment.
Ctrl + y	Redoes the adjustment.

Parent topic: [Screen Summary](#)

Related tasks

[Adjusting the Screen with the Tiling Assist Feature](#)

Image

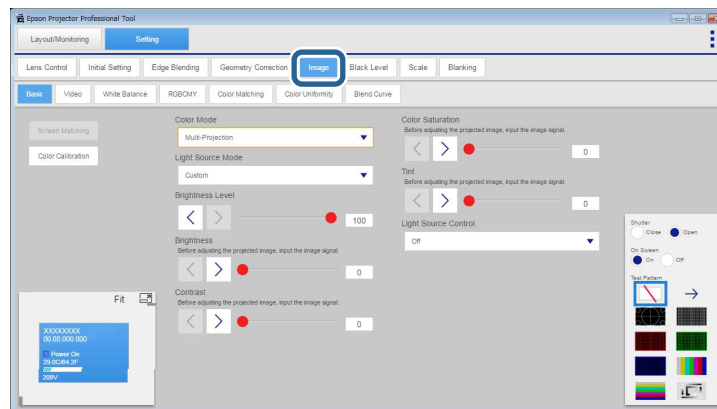
You can adjust the following image settings on the **Image** tab.

- **Color Mode**
- **Light Source Mode**
- **Brightness Level**
- **Brightness**
- **Contrast**
- **Color Saturation**
- **Tint**



- **Dynamic Contrast**
- **Image Processing**
- **Frame Interpolation**
- **Deinterlacing**
- **White Balance**
- **RGBCMY**
- **Color Matching**
- **Color Uniformity**
- **Blend Curve**

You can also perform the following automatic corrections on the projector or group you selected:

- **Screen Matching**
- **Color Calibration**



You can select the pattern type you want to view to confirm your settings by using the **Pattern Display** settings in the **Color Matching** tab.

- : Displays a smooth image with gradations applied to the overlapped image area.
- : Clearly displays the center of the overlapped image area.

You can adjust the settings for multiple projectors or groups simultaneously on the **Image** tab. If you select different projector models, you can adjust only settings that are available on all selected projectors.

Note:

- When selecting multiple projectors, you can apply the **RGBCMY**, **Color Matching**, **Color Uniformity**, or **Blend Curve** setting to all projectors selected.
- When adjusting the **Color Uniformity** settings, the image may become distorted. The image is restored once adjustments are complete.
- When you set **Constant Brightness** to **On** in the projector's menu, you cannot change the **Light Source Mode** setting and the **Brightness Level** settings.
- You can change the **Brightness Level** settings only when you set **Light Source Mode** to **Custom**.
- You can change the **Dynamic Contrast** settings only when you set **Color Mode** to **Dynamic** or **Cinema**.
- You can select **Fast 1** as the **Image Processing** setting only when you set **Deinterlacing** to **Video** or **Film/Auto**.
- You cannot change the **Frame Interpolation** settings in the following situations:
 - The input signal is higher than WUXGA.
 - **4K Enhancement** and **Scale** are enabled.
 - **Edge Blending** is set to **On**.
 - **Image Processing** is set to **Fast 1** or **Fast 2**.
- You cannot change the **Deinterlacing** settings in the following situations:
 - **Image Processing** is set to **Fast 2**.
 - The input signal is other than 480i, 576i, or 1080i.

Operating conditions for automatic correction

You can perform automatic correction in the following situations:

- The automatic correction is available in all projectors in a group.
- All projector panels in a group are positioned with no gaps and formed in a rectangular shape.
- The screen surface is flat and not skewed or warped.
- A matte white diffusion screen is used.

- The projected image is from 80 to 200 inches in size.
- After you perform Tiling, the projected image is formed in a rectangular shape.
- All projected images are lined up with no gaps. (Adjust the width of the overlapping area to 15 to 45%.)
- The projector is installed parallel to the projected image.

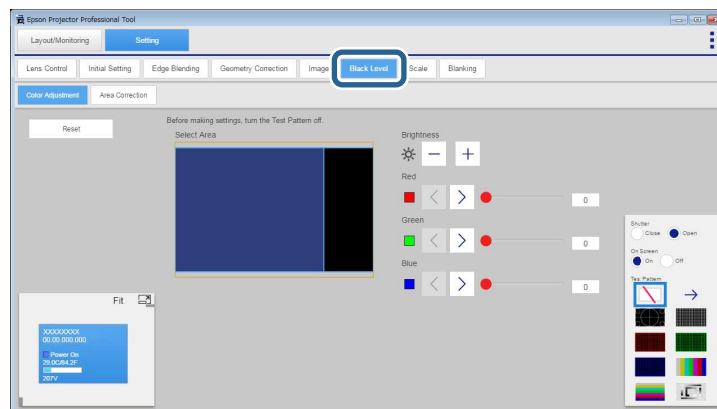
Note:

- Automatic correction may not be performed depending on the projector lens. See your projector *User's Guide* for details.
- After you perform automatic correction, the adjustment range of the lens shift may be reduced, depending on the projector lens.
- We recommend performing automatic correction after turning on the projector or canceling Shutter for 20 minutes or more.
- When you make adjustments, we recommend darkening the room for the most accurate corrections.
- When you perform automatic correction using the camera built into the projector, do not block the camera or the projected images.

Parent topic: [Screen Summary](#)

Black Level

You can adjust the brightness and color tone for the area where the images do not overlap to create a seamless image.



Note:

- When you turn off **Edge Blending** or have not selected the edge of the image, you cannot adjust the **Black Level** setting.
- When multiple screens are overlapping, adjust based on the area with the most overlap (the brightest area).
- You cannot adjust the **Black Level** setting when a test pattern is displayed.
- If the **Geometry Correction** value is large, you may not be able to adjust the **Black Level** setting.
- If you change the **Top Edge/Bottom Edge/Right Edge/Left Edge** settings, the **Black Level** setting returns to its default value.
- During automatic **Screen Matching** adjustments, previously selected **Color Adjustment** settings may change.

Keyboard Shortcuts

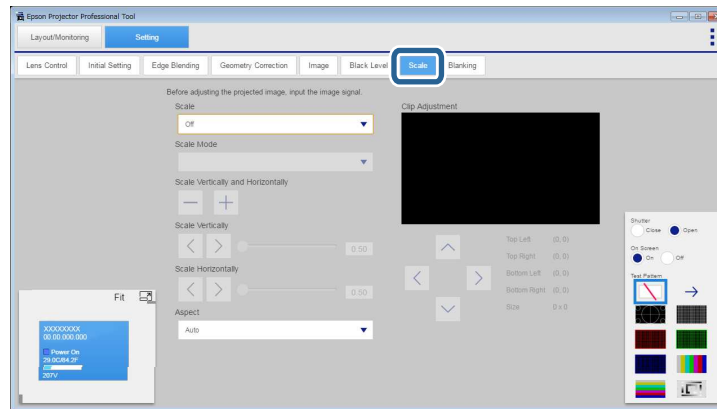
When you adjust settings on the **Black Level** tab, you can use the following keyboard commands:

Keyboard command	Function
↑ / ↓ / ← / →	Moves the cursor on a line or point of the image.
Enter	Switches selection between a line and points.
Ctrl + [↑ / ↓ / ← / →]	Moves a line or point.

Parent topic: [Screen Summary](#)

Scale

You can crop and/or scale portions of the image that the projectors are combining together.

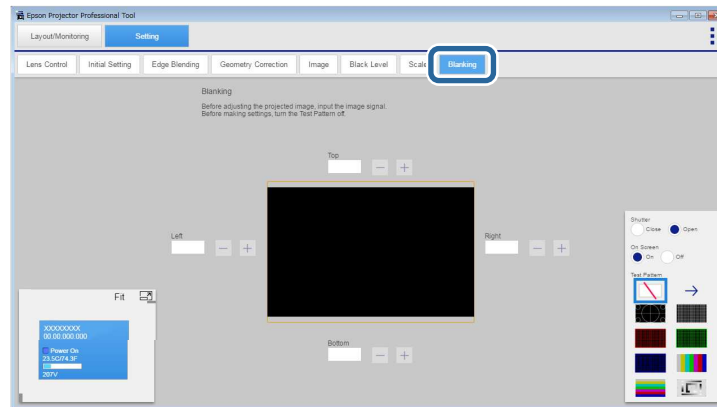


Note: Depending on the firmware version, the **Aspect** setting may not be available.

Parent topic: [Screen Summary](#)

Blanking

You can hide a specific area of the projected image you select.



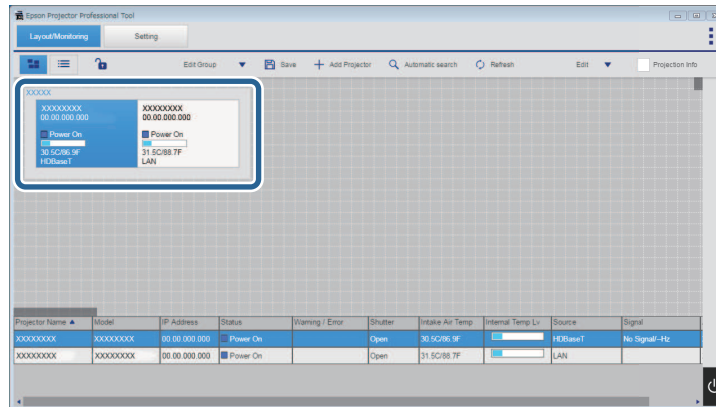
Note: When no input signal is received, you cannot adjust the **Blanking** settings.

Parent topic: [Screen Summary](#)

Adjusting the Screen with the Tiling Assist Feature

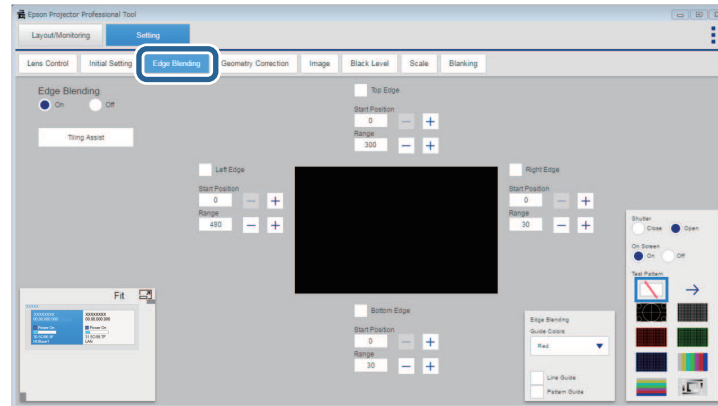
You can easily and quickly create a single seamless image from multiple projectors when projecting on a flat screen using the **Tiling Assist** wizard.

1. Create a group of projectors that support **Tiling Assist**.

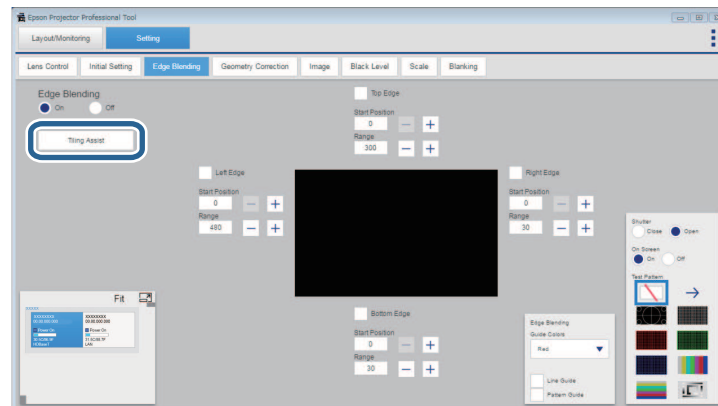


2. Click the **Setting** tab.

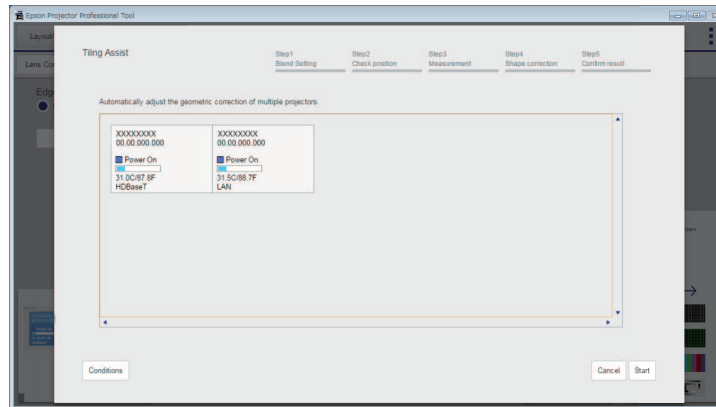
3. Adjust the **Edge Blending** values on the **Edge Blending** tab.



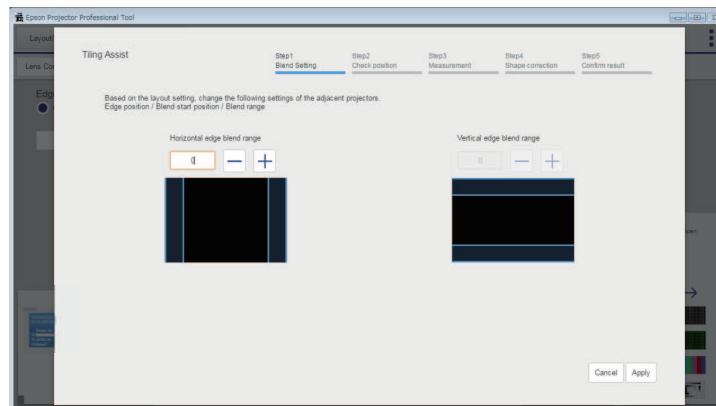
4. Click **Tiling Assist**.



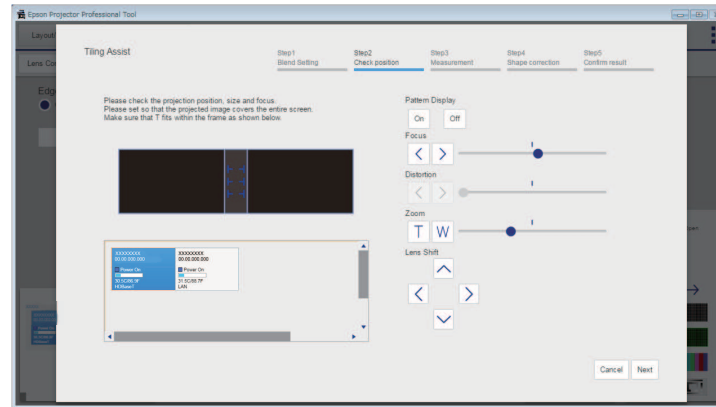
The **Tiling Assist** wizard starts.



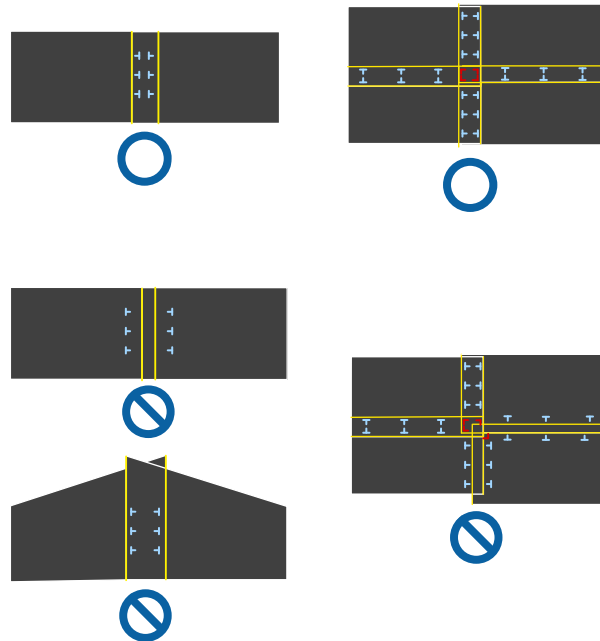
5. If a specified **Edge Blending** value is incorrect, the **Blend Setting** screen appears. Adjust the **Edge Blending** values as necessary.



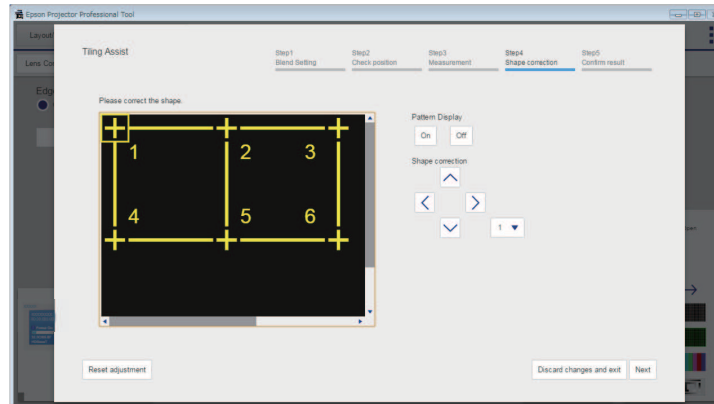
6. While checking the displayed pattern, adjust the focus, size, and position of your projected image so the image covers the entire screen.



Example:



7. Click **Next**.
Calibration starts.
8. Adjust the shape of the projected image. If necessary, adjust the **Linearity** setting.



9. Check the result of the **Tiling Assist** adjustments.
 10. If necessary, select **To screen matching** to start **Screen Matching**.
- If there are any gaps in the position of the projected images as a result of the **Tiling Assist** adjustments, adjust the **Point Correction** setting manually.

Note:

- After using the **Tiling Assist** wizard, the following settings change automatically.
 - The **Correction Type** setting on the **Geometry Correction** tab is set to **Point Correction** and the value of the **Point Correction** setting is set to 17×17.
 - The **Area Correction** setting on the **Black Level** tab is set automatically.
 - The **Color Adjustment** setting on the **Black Level** tab is set automatically.

If you want to change the **Color Adjustment** setting, perform **Screen Matching**.

- After calibration, the initial value of the outline position is set 5% from the inside corners of the panel.

[Operating Conditions for the Tiling Assist Wizard](#)
[Solving Tiling Assist Problems](#)

Parent topic: [Adjusting Projected Images](#)

Operating Conditions for the Tiling Assist Wizard

You can use the **Tiling Assist** wizard in the following situations:

- The image is projected in front of the screen.
- You can adjust up to 15 projectors.
- You have grouped the projectors you want to adjust.
- All projector panels in a group are positioned with no gaps and formed in a rectangular shape.
- The screen surface is flat and not skewed or warped.
- The projected image is from 100 to 200 inches (4K) or 100 to 300 inches (WUXGA) in size.
- All the projectors must be connected to the same network and projecting using the same resolution.
- All projected images are lined up with no gaps. (Adjust the width of the overlapping area to 15 to 43%.)
- All the projectors are installed parallel to the projected image.
- A matte white diffusion screen is used.

Parent topic: [Adjusting the Screen with the Tiling Assist Feature](#)

Solving Tiling Assist Problems

Try these solutions if you experience problems while using Tiling Assist.

- If the **The adjustment limit of geometric correction has been exceeded.** message appears, increase the amount of the physical overlapping of the images.
- If the wizard stops while adjusting the shape of the projected image, the adjustment limit of geometric correction has been reached. Try adjusting the shape again and be careful to stay within the possible range.
- If an error occurs and the wizard stops when starting calibration, make sure that the cover is removed from the built-in camera.
- If an error occurs during calibration, try the following solutions:
 - Make sure that no objects are in front of the built-in camera.
 - Make sure that at least one third of the center of the each projector's projection range fits into the projection surface.
 - Make sure that any bright objects, such as bright lighting, are not placed near the projection surface.

- If an error occurs and the wizard stops after finishing calibration, make sure that you are using Tiling Assist under the correct operating conditions.

Parent topic: [Adjusting the Screen with the Tiling Assist Feature](#)

Related references

[Operating Conditions for the Tiling Assist Wizard](#)

Monitoring Projectors

Follow these instructions to monitor the registered projectors.

Projector Monitoring Views

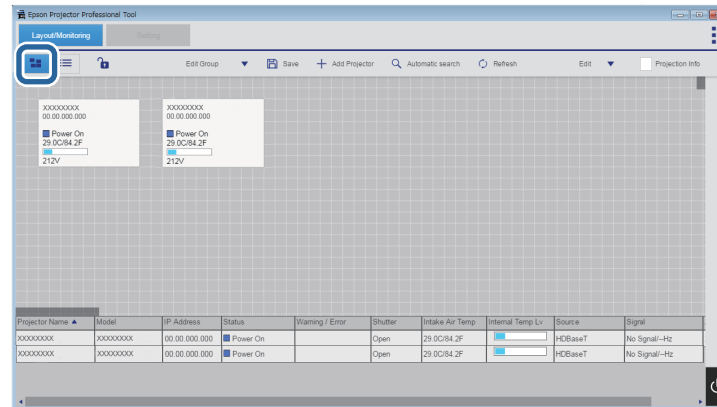
Projector Monitoring Views

To monitor projectors, select the **Layout/Monitoring** tab.

You can select the type of monitoring window you want to view from the following windows on the **Layout/Monitoring** tab.

-  Layout view

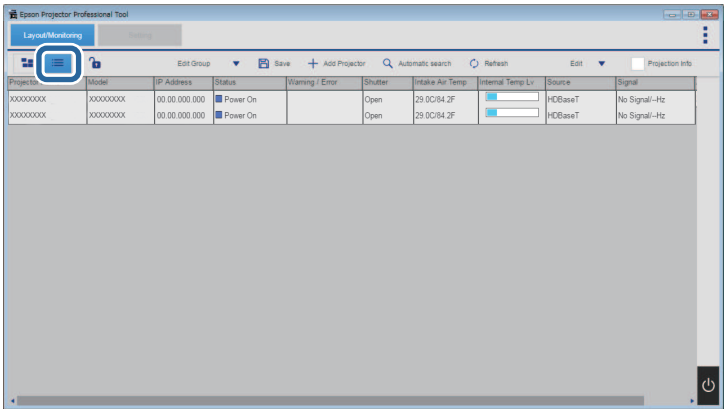
You can check projector status in individual panels and in the list at the bottom of the window. The status of up to four projectors are displayed in the list.



Note: You can select the information that is displayed on the projector panel by selecting **Panel items** from the **Edit** menu.

-  List view

You can check projector status as a list.



The **Internal Temp Lv** indicator shows the following conditions:

	The projector is too hot.
	The projector is overheated.
	The projector's temperature level is normal.

Note: Depending on the firmware version, the status of the projectors may not be displayed correctly.

Parent topic: [Monitoring Projectors](#)

Related references

[Adding a Projector to a Project](#)

Appendix

See these sections to learn more about the Epson Projector Professional Tool software.

[Updating and Uninstalling the Software](#)

[Notices](#)

Updating and Uninstalling the Software

Follow these instructions to update or uninstall the Epson Projector Professional Tool software.

[Getting the Latest Version of the Software](#)

[Uninstalling the Epson Projector Professional Tool Software \(Windows 7\)](#)

[Uninstalling the Epson Projector Professional Tool Software \(Windows 8.x/Windows 10\)](#)

Parent topic: [Appendix](#)

Getting the Latest Version of the Software

Updates to this software and this manual may be available for your product. To check for updates, visit epson.com/support (U.S), epson.ca/support (Canada), or epson.com.jm/support (Caribbean) and select your product.

Parent topic: [Updating and Uninstalling the Software](#)

Uninstalling the Epson Projector Professional Tool Software (Windows 7)

Follow the instructions below to uninstall the Epson Projector Professional Tool software.

Note: You need administrator authority to uninstall the software.


1. Turn on your computer.
2. Make sure all running applications are closed.
3. Click **Start**, and then click **Control Panel**.
4. Click **Uninstall a program** from the **Programs** category.
5. Select **Epson Projector Professional Tool**, and then click **Uninstall/Change**.
6. Follow the on-screen instructions.

Parent topic: [Updating and Uninstalling the Software](#)

Uninstalling the Epson Projector Professional Tool Software (Windows 8.x/Windows 10)

Follow the instructions below to uninstall the Epson Projector Professional Tool software.

Note: You need administrator authority to uninstall the software.

1. Turn on your computer.
2. Make sure all running applications are closed.
3. Press the  key on the keyboard to display all apps.
4. Right-click (press and hold) **Epson Projector Professional Tool Ver.X.XX**, and then select **Uninstall**.
5. Follow the on-screen instructions.

Parent topic: [Updating and Uninstalling the Software](#)

Notices

Check these sections for important notices about your software.

[Copyright Notice](#)

[About Notations](#)

[General Notice](#)

[Copyright Attribution](#)

Parent topic: [Appendix](#)

Copyright Notice

All rights reserved. No part of this publication may be reproduced, stored in a retrieval system, or transmitted in any form or by any means, electronic, mechanical, photocopying, recording, or otherwise, without the prior written permission of Seiko Epson Corporation. No patent liability is assumed with respect to the use of the information contained herein. Neither is any liability assumed for damages resulting from the use of the information contained herein.

Neither Seiko Epson Corporation nor its affiliates shall be liable to the purchaser of this product or third parties for damages, losses, costs, or expenses incurred by the purchaser or third parties as a result of: accident, misuse, or abuse of this product or unauthorized modifications, repairs, or alterations to this product, or (excluding the U.S.) failure to strictly comply with Seiko Epson Corporation's operating and maintenance instructions.

Seiko Epson Corporation shall not be liable against any damages or problems arising from the use of any options or any consumable products other than those designated as Original Epson Products or Epson Approved Products by Seiko Epson Corporation.

The contents of this guide may be changed or updated without further notice.

Illustrations in this guide and the actual projector may differ.

Parent topic: [Notices](#)

About Notations

- Microsoft® Windows® 7 operating system
- Microsoft® Windows® 8.1 operating system
- Microsoft® Windows® 10 operating system

In this guide, the operating systems above are referred to as "Windows 7", "Windows 8.1", and "Windows 10". Furthermore, the collective term Windows may be used to refer to Windows 7, Windows 8.1, Windows 10, and multiple versions of Windows may be referred to as, for example, Windows 7/8.1, with the Windows notation omitted.

Parent topic: [Notices](#)

General Notice

EPSON is a registered trademark, and EXCEED YOUR VISION and its logo is registered trademark or trademark of Seiko Epson Corporation.

Microsoft, Windows, and Windows logo are trademarks or registered trademarks of Microsoft Corporation in the United States and/or other countries.

Other product names used herein are also for identification purposes only and may be trademarks of their respective owners. Epson disclaims any and all rights in those marks.

Software Copyright: This product uses free software as well as software to which this company holds the rights.

© 2018 Epson America, Inc.

Parent topic: [Notices](#)

Copyright Attribution

7/19

CPD-56848

Parent topic: [Notices](#)