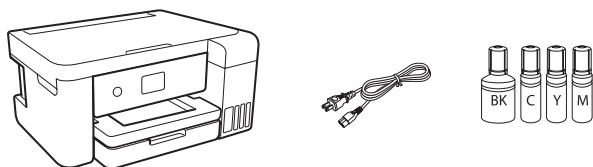


ET-3710

Start Here

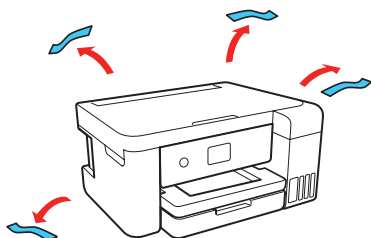
IMPORTANT: Before using this product, make sure you read these instructions and the safety instructions in the online *User's Guide*.

1 Unpack

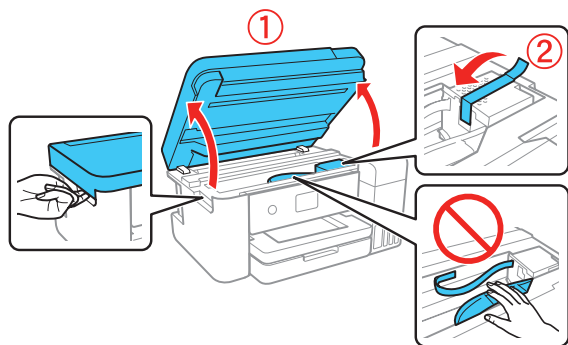


Note: Do not open the ink bottles until you are ready to fill the ink tanks. The ink bottles are vacuum packed to maintain reliability.

- 1 Remove all protective materials from the product.



- 2 Lift up the scanner unit. Remove all protective materials from inside the product.



Caution: Do not touch the flat white cable or the ink tubes and their translucent cover.

2 Fill ink tanks

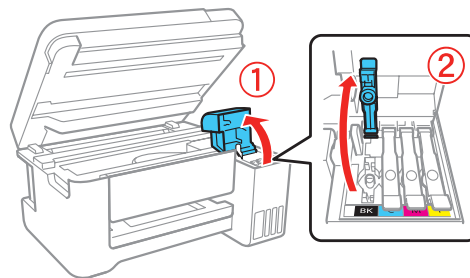
Warning: Keep the ink bottles out of the reach of children and do not drink the ink.

Caution: This product requires careful handling of ink. If ink spills, wipe it off immediately with a damp towel to avoid permanent stains. If ink gets on your clothes or belongings, it may not come off.

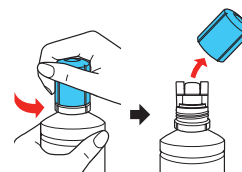
Note:

- Epson cannot guarantee the quality or reliability of third-party ink.
- Use the ink bottles included with the printer to set up the product. Part of the ink will be used to charge the print head. These bottles may print fewer pages compared with replacement ink bottles.

- 1 Open the ink tank cover, then open the cap for the black ink tank.

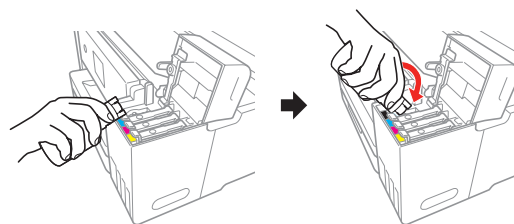


- 2 Unpack the black (BK) ink bottle. Hold the ink bottle upright and slowly turn the bottle cap to remove it.



Caution: Do not shake or squeeze the ink bottles. Do not touch the top of the ink bottle after its cap is removed.

- 3 Insert the ink bottle into the filling port, as shown below.

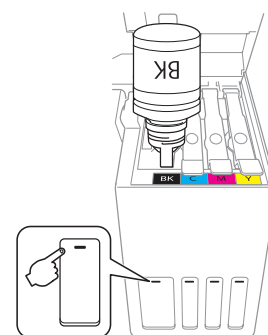


Note: Refer to the color-coded sticker on the ink tank unit to identify the color of each tank. Do not force the bottles into position; they are keyed for each color.

- 4 Wait for the ink to fill the tank. Do not squeeze the bottle. Ink flows into the tank and stops automatically when the ink is filled to the upper line.

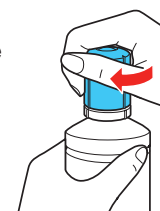
Note: If ink does not flow from the bottle, lift and reinsert the bottle.

Caution: After setup, periodically inspect the ink level to ensure it is not below the lowest line on the tank. Prolonged use when ink is below the lowest line could damage the product. See the online *User's Guide* for refilling instructions.



- 5 When the ink tank is full, remove the ink bottle and replace the bottle cap. Place the remaining ink aside; you will need it later.

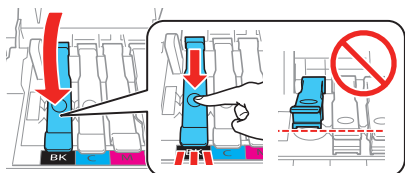
Note: Do not leave the ink bottle inserted; otherwise the bottle may be damaged or ink may leak.



413829600

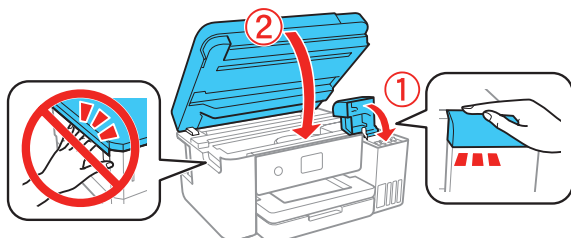
EPSON
EXCEED YOUR VISION

- 6** Close the ink tank cap.

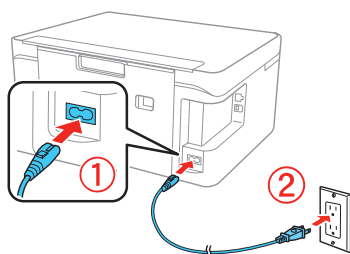


- 7** Repeat the previous steps for the other colors.


- 8** Close the ink tank cover and then the scanner unit.

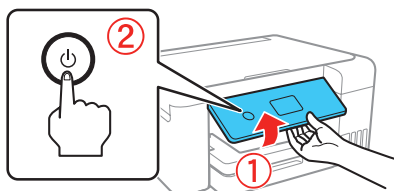


- 9** Connect the power cord to the back of the product and to an electrical outlet.

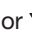



Caution: Do not connect to your computer yet.

- 10** Raise the control panel, then press the  power button to turn on the product.




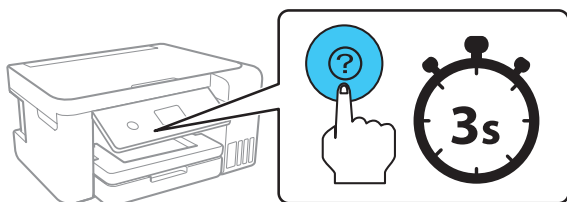
Note: If an error message appears, turn off the product and check that no protective material has been left inside the product.

- 11** Press  or  to select your language on the LCD screen, then press the **OK** button.

Note: You can change this setting later using the product's control panel. For more information, see the online *User's Guide*.

Follow steps 12 and 13 to continue ink charging.

- 12** When the message to see the *Start Here* sheet appears on the LCD screen, press the **OK** button. On the next screen, press and hold the  help button for 3 seconds.



- 13** When the message to start initialization appears on the LCD screen, press the **OK** button to start charging the ink. Ink charging takes approximately 10 minutes. A message appears when ink charging is complete. Press the **OK** button to continue.



Caution: Do not turn off the product, raise the scanner unit, or load paper while the product is charging or you'll waste ink.

Note: The included ink bottles are designed for reliable printer setup and cannot be resold. After setup, the remaining ink is available for printing.

- 14** To complete filling the ink tanks, repeat steps 1 through 7 using the remaining ink in the bottles.

Note: Replace the bottle caps before disposing of the bottles.

- 15** Close the ink tank cover and scanner unit.

- 16** Select **Next** and press the **OK** button. Follow the on-screen instructions to reset the ink levels.

- 17** Follow the on-screen instructions to adjust the print quality. Press the **OK** button to continue.

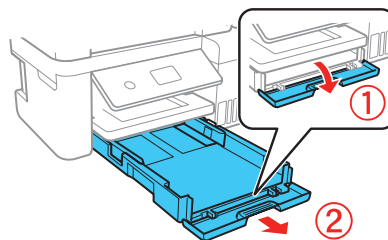
Note:

- You need to load paper before you can adjust the print quality. See "Load paper" below for details.
- You can change these settings later using the product's control panel. For more information, see the online *User's Guide*.

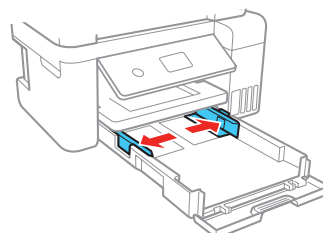
3 Load paper

See the online *User's Guide* for information about loading capacity, available paper types and sizes, and loading envelopes.

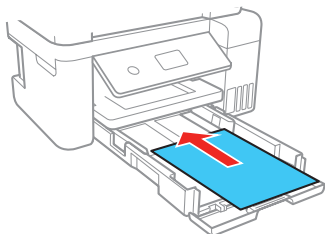
- 1** Make sure the product is not charging ink, and then open the front of the paper cassette and pull out the paper cassette.



- 2** Slide the side edge guides all the way out.

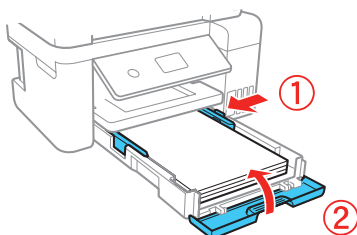


- 3** Insert paper with the glossy or printable side down.

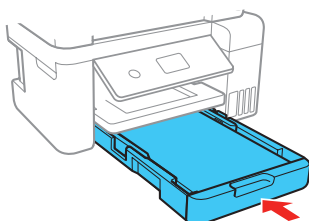


Note: Make sure the paper is loaded against the front edge guide and not sticking out from the end of the cassette.

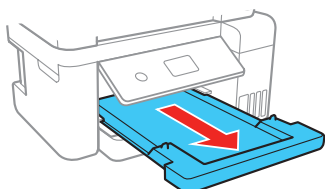
- 4** Slide the side edge guides against the paper, but not too tightly. Close the front of the cassette.



- 5** Keep the cassette flat as you insert it all the way.



- 6** Pull out the output tray.



- 7** Select the paper settings on the product's control panel.

4 Install software

Note:

- An Internet connection is required to obtain the product software.
- To print from a Chromebook™, go to www.epson.com/support/gcp (U.S.) or www.epson.ca/support/gcp (Canada) for instructions.

- 1** Make sure the product is **NOT CONNECTED** to your computer.



Windows®: If you see a Found New Hardware screen, click **Cancel** and disconnect the USB cable.

- 2** Download and run your product's software package:
www.epson.com/support/et3710 (U.S.) or
www.epson.ca/support/et3710 (Canada)

- 3** Follow the instructions on the computer screen to run the setup program.

- 4** When you see the Select Your Connection screen, select one of the following:

- **Wireless connection**

In most cases, the software installer automatically attempts to set up your wireless connection. If setup is unsuccessful, you may need to enter your network name (SSID) and password.

- **Direct USB connection**

Make sure you have a USB cable (not included).

- **Wired network connection**

Make sure you have an Ethernet cable (not included).

Mobile and voice-activated printing

- Print directly from your iOS device. Simply connect your printer and device to the same network and tap the action icon to select the print option.
- Print directly from your Android™ (v4.4 or later) device*. Simply connect your printer and device to the same network and tap the menu icon to select the print option.
- Print from wherever you are, next to your printer or remotely, with Epson Connect™ and Google Cloud Print™. Learn more at www.epson.com/connect (U.S.) or www.epson.ca/connect (Canada).
- Use voice-activated assistants to print a variety of creative and everyday items from your Epson® product. Simply add your product to an Epson Connect account, then link the account to a voice-activated assistant. See www.epson.com/voice (U.S.) or www.epson.ca/voice (Canada) for more information.

* May require the Epson Print Enabler or Mopria Print Service app from Google Play™.

Any problems?

Network setup was unsuccessful.

- Make sure you select the right network name (SSID).
- Restart your router (turn it off and then on), then try to connect to it again.
- The printer can only connect to a network that supports 2.4 GHz connections. If your router offers both 2.4 GHz and 5 GHz connections, make sure 2.4 GHz is enabled.
- If you see a firewall alert message, click **Unblock** or **Allow** to let setup continue.
- If your network has security enabled, make sure you enter your network password (WEP key or WPA passphrase) correctly. Be sure to enter your password in the correct case.

- Print a network connection report to identify network problems and solutions. See your online *User's Guide* for instructions.

There are lines or incorrect colors in my printouts.

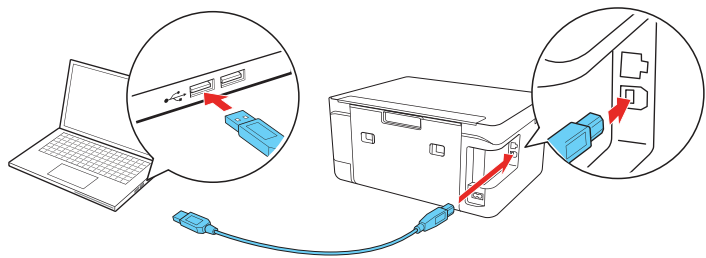
Run a nozzle check to see if any of the print head nozzles are clogged. Then clean the print head, if necessary. See the online *User's Guide* for more information.

The product's screen is dark.

Make sure your product is turned on, and press any button to wake it from sleep mode.

Setup is unable to find my product after connecting it with a USB cable.

Make sure your product is on and securely connected as shown:



Any questions?

User's Guide

Windows: Click the icon on your desktop or Apps screen to access the online *User's Guide*.

Mac: Click the icon in Applications/Epson Software/Guide to access the online *User's Guide*.

If you don't have a User's Guide icon, go to the Epson website, as described below.

Videos

Visit www.epson.com/support/et3710videos (U.S.) or www.epson.ca/support/et3710videos (Canada) to view support videos.

Technical support

Visit www.epson.com/support/et3710 (U.S.) or www.epson.ca/support/et3710 (Canada) and search for your product to download drivers, view manuals, get FAQs, or contact Epson.

Call (562) 276-4382 (U.S.) or (905) 709-3839 (Canada), 6 AM to 8 PM Pacific Time, Monday through Friday, and 7 AM to 4 PM, Pacific Time, Saturday. Days and hours of support are subject to change without notice. Toll or long distance charges may apply.

Recycling

Epson offers a recycling program for end of life hardware and ink bottles. Please go to www.epson.com/recycle (U.S.) or www.epson.ca/recycle (Canada) for information on how to return your products for proper disposal.





Need paper and ink?

Ensure brilliant results with Epson specialty and plain papers, engineered specifically for Epson printers. Find Epson papers and Epson Genuine Ink at www.epson.com (U.S. sales) or www.epson.ca (Canadian sales) and at Epson authorized resellers. Call 800-GO-EPSON (800-463-7766).



DESIGNED *for* EXCELLENCE™
Epson printers, ink and specialty papers.

ET-3710 replacement inks

Color	Part number
 Black	502
 Cyan	502
 Magenta	502
 Yellow	502



EPSON is a registered trademark, EPSON Exceed Your Vision is a registered logomark, and Epson Connect is a trademark of Seiko Epson Corporation.

Designed for Excellence is a trademark of Epson America, Inc.

Mac is a trademark of Apple Inc., registered in the U.S. and other countries.

Windows is a registered trademark of Microsoft Corporation in the United States and/or other countries.

Android, Chromebook, Google Cloud Print, and Google Play are trademarks of Google LLC.

General Notice: Other product names used herein are for identification purposes only and may be trademarks of their respective owners. Epson disclaims any and all rights in those marks.

This information is subject to change without notice.

© 2019 Epson America, Inc., 5/19