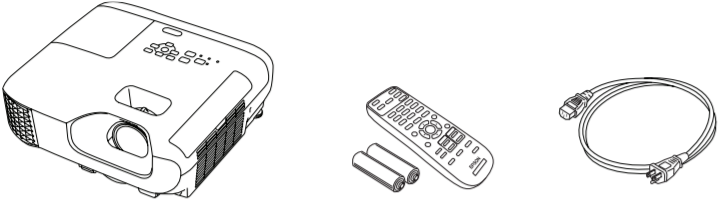


# Quick Setup

**IMPORTANT:** Before using this product, make sure you read these instructions and the safety instructions in the online *User's Guide*.

## Contents

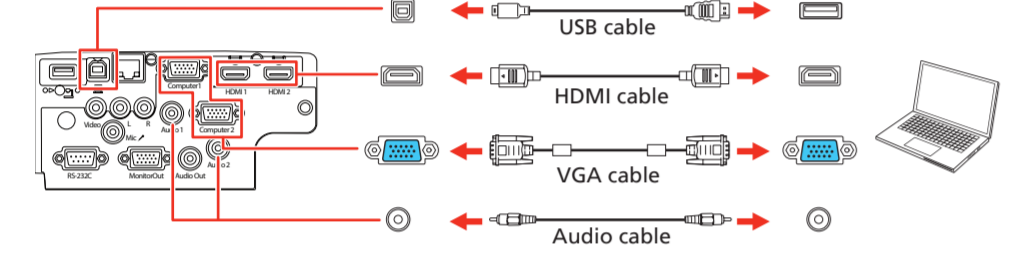
Make sure your projector box includes all of these parts:



## Connect the projector

Choose from the following connections. See the sections below or the online *User's Guide* for details.

### Computer



### HDMI™ port

Connect one end of an HDMI cable to one of the projector's **HDMI** ports and the other end to an HDMI port on your computer.

### Computer port

Connect one end of a VGA cable to one of the projector's **Computer** ports and the other end to your laptop or computer's  monitor port. Make sure to switch your laptop to external display (see "Troubleshooting" on the back of this sheet). You can also connect an audio cable.

### USB port

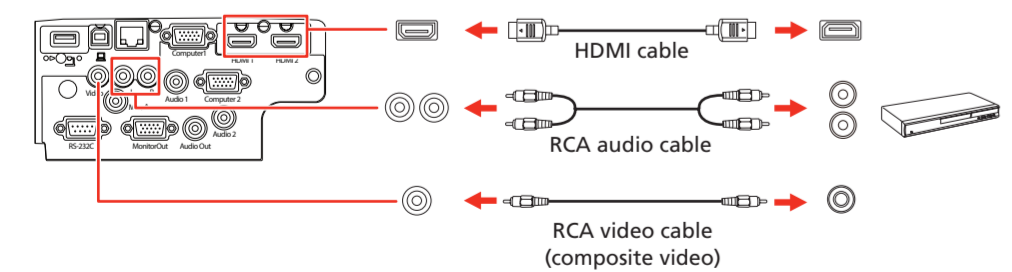
Connect the square end of a USB cable to the projector's **USB-B** (square) port. Connect the flat end of the cable to any USB port on your computer.

**Windows® 7 or later:** After turning on the projector, follow the on-screen instructions to install the Epson® USB Display software (**EMP\_UDSE.EXE**, only on first connection). If the software screen does not display automatically, open **My Computer**, **Computer**, or **This PC**, then double-click **EPSON\_PJ\_UD**.

**OS X 10.8.x or higher:** After turning on the projector, the setup folder for USB Display appears in the Finder. Double-click **USB Display Installer** and follow the on-screen instructions to install the Epson USB Display software (only on first connection). If the software screen does not display automatically, double-click **EPSON\_PJ\_UD**, then double-click **USB Display Installer**.

### Video device

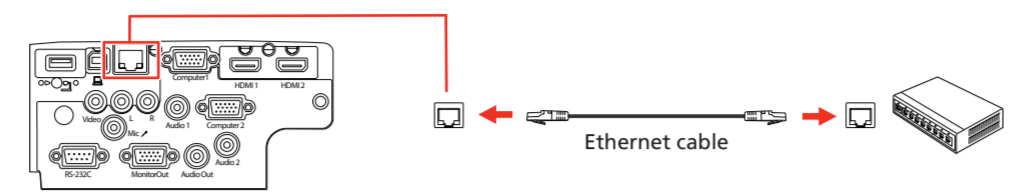
Connect one end of an HDMI cable to one of the projector's **HDMI** ports and the other to an HDMI port on your video device.



**Note:** If you connected a streaming device to an HDMI port, you can also connect it to the projector's **USB-A** (flat) port for power.

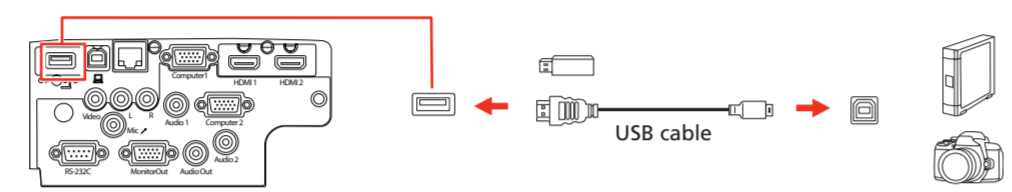
### Wired network

Connect the projector to your network using an Ethernet cable. See the online *User's Guide* for details.



### USB device

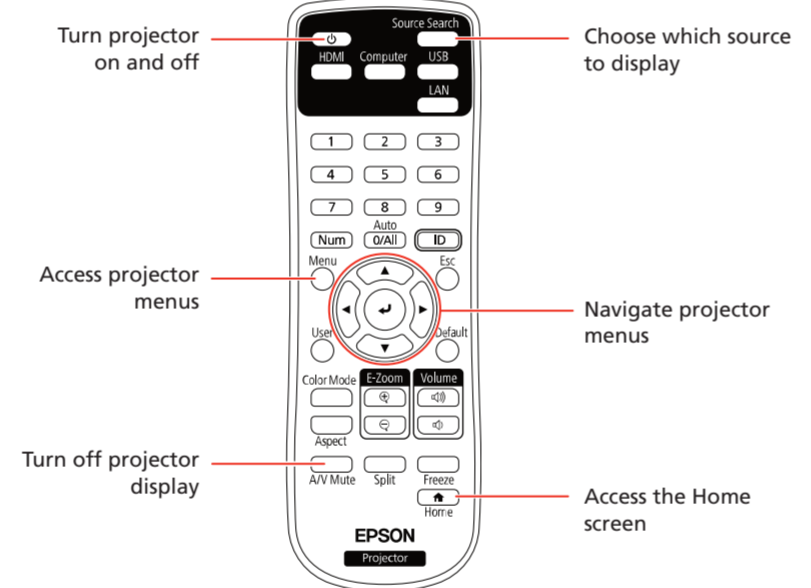
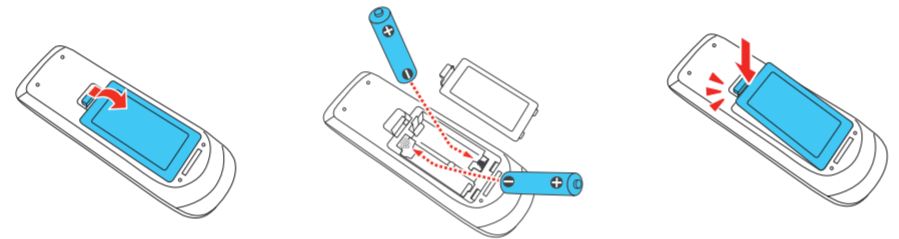
Connect a supported digital camera, USB flash drive, or USB storage device to the projector's **USB-A** (flat) port.



If you connect a digital camera, USB flash drive, or USB storage device, you can use the projector's PC Free feature. See the online *User's Guide* for details.

## Using the remote control

Install the batteries as shown (two AA batteries).



For more information on using the remote control, see the online *User's Guide*.

## Turn on your equipment

- 1 Plug in the projector. The power light on the projector turns blue.
- 2 Press the power button on the projector or remote control. The projector beeps, the Status light flashes blue, and then stays on.

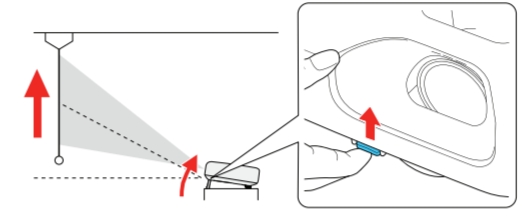
**Note:** To shut down the projector, press the power button twice.

- 3 When the Home screen appears, use the arrow and **Left** buttons on the projector or remote control to switch between projection sources and quickly access various options.

- 4 The default language of the menu system is English. To select another language, press the **Menu** button on the projector or remote control. Select **Extended**, select **Language**, then select your language. Press the **Menu** button to exit the menu system.
- 5 Turn on your computer or video source.

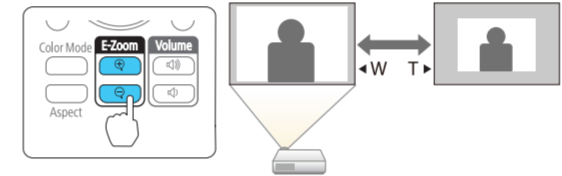
## Adjust the image

- 1 If you don't see an image, press the **Source Search** button on the projector or remote control to select the image source.
- Note:** If you still see a blank screen or have other display problems, see "Troubleshooting."

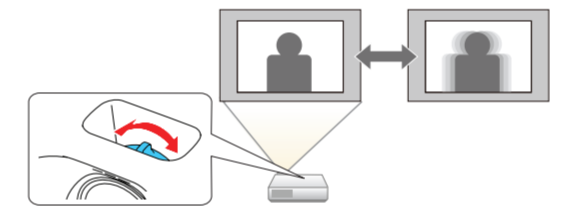


- 2 To raise the image, press the foot release button and lift the front of the projector. Release the button to lock the foot in position.

- 3 To reduce or enlarge the image, press the **E-Zoom** buttons on the remote control.



- 4 To sharpen the image, turn the focus ring.



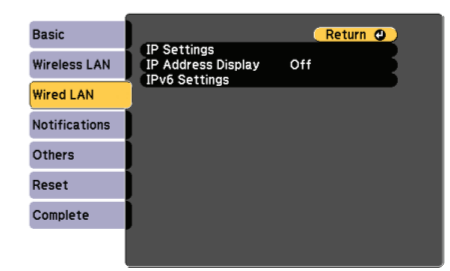
- 5 If your image looks like or , you may have placed the projector off to one side of the screen at an angle. Place the projector directly in front of the center of the screen, facing the screen squarely. If you can't move the projector, select the **Keystone** setting on the Home screen or in the Settings menu to correct the image shape.

- 6 Your projector automatically adjusts an image that looks like or , but, if necessary, you can press the or button on the projector to correct it.

## Wired network configuration

Follow these steps to set up your projector for a wired network connection.

- 1 Press the **Menu** button on the remote control.
- 2 Select the **Network** menu and press **Left**.
- 3 Select **Network Configuration** and press **Left**.
- 4 Select the **Wired LAN** menu and press **Left**.
- 5 Choose **IP Settings** and press **Left**.
- 6 If your network assigns addresses automatically, make sure the **DHCP** setting is on. If not, make sure **DHCP** is off and enter the projector's **IP Address**, **Subnet Mask**, and **Gateway Address**, as needed. Then press **Esc**.



- 7 To prevent the IP address from appearing on the network standby screen, set the **IP Address Display** setting to **Off**.
- 8 Select any other settings on the Wired LAN menu, as necessary. See the online *User's Guide* for details.
- 9 When you are finished, select **Complete** and follow the on-screen instructions to save your settings and exit the menus.

**Note:** If you are prompted to enter a password for Epson Web Control, you can create a password or leave it blank. If you do not set a password, you cannot use Epson Web Control.

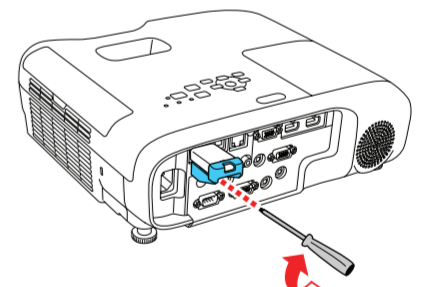
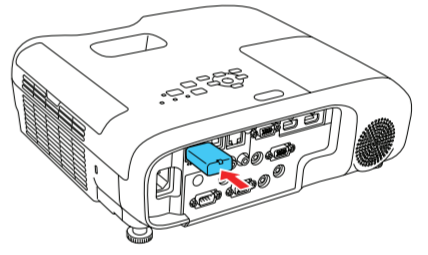
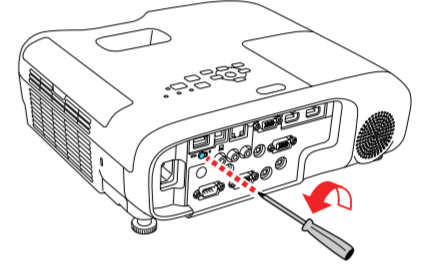
## Setting up a wireless connection

Follow these steps to set up the projector for a wireless network connection.

To project wirelessly, you need to install the optional wireless LAN module (part number V12H005A02).

### Install the optional wireless LAN module

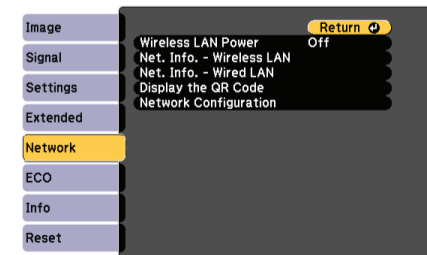
- 1 Remove the wireless LAN module cover screw.
- 2 Insert the wireless LAN module into the **USB-A** port.
- 3 Attach the wireless LAN module cover and secure it using the screw you removed.



**Note:** The light on the wireless LAN module turns on when the module is installed and operating. The light flashes when the module is communicating over the network.

### Select wireless network settings

- 1 Press the **Menu** button on the remote control.
- 2 Select the **Network** menu and press **Left**.
- 3 Select **On** as the Wireless LAN Power setting.
- 4 Select **Network Configuration** and press **Left**.
- 5 Select the **Others** menu and press **Left**.
- 6 Set the **Priority Gateway** setting to **Wireless LAN**.



**7** Select the **Wireless LAN** menu and press .

**8** Select one of the following as the Connection Mode setting:

- **Quick** for a direct connection to a computer, tablet, or smartphone.

- **Advanced** to connect your projector to a router or access point.

**9** Select any other settings on the Wireless LAN menu, as necessary. See the online *User's Guide* for details.

**10** When you are finished, select **Complete** and follow the on-screen instructions to save your settings and exit the menus.

**Note:** *If you are prompted to enter a password for Epson Web Control, you can create a password or leave it blank. If you do not set a password, you cannot use Epson Web Control.*

## Install the optional software

You can use Epson iProjection™ software to display wirelessly from a computer to your networked projector. Download the software and operation guide from your product's support page (see "Where to get help") and install the program on each computer that will project over the network.

To monitor and control your projector over the network, download and install the Epson Projector Management software (Windows only) and operation guide from your product's support page (see "Where to get help").

## Using web control

You can use a standard web browser to control the projector through the network. A virtual remote control on your computer or mobile device screen lets you perform many of the same functions as you can with the physical remote control.

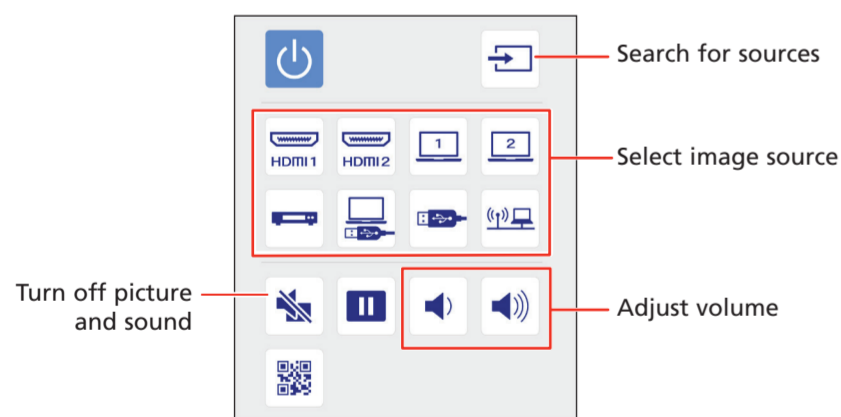
**Note:** *Make sure the computer and the projector are on the same network. See the online User's Guide for details.*

**1** Open your web browser and enter the IP address of the projector you want to monitor in the browser's address bar. The Epson Web Control menu opens.

If you're not sure what the IP address of the projector is, turn the projector on and select **Net. Info. - Wireless LAN** from the Network menu to display the IP address of the projector. (Do not enter the leading zeroes.)

**2** Select **Basic Control**. If you see a login screen, enter **EPSONWEB** as the user name. If a password was created, enter the password.

**3** Use the on-screen buttons to operate the projector, as you would using the remote control.



## Using the Epson iProjection app

You can project wirelessly from a mobile device (iOS, Android™, or Chromebook™) using the Epson iProjection app and a QR code.

**1** Scan the following QR code to download and install the Epson iProjection app.



**2** If you connected the projector to a network wirelessly, make sure to connect your mobile device to the same network.

**3** Press the **LAN** button on the remote control to display a QR code on the projector screen.

**4** Start Epson iProjection on your mobile device.

**5** Use the QR code reader feature to read the QR code displayed.




Your device and the projector are connected.

For more information on setting up and using this app, visit <http://latin.epson.com/iprojection>.

## Troubleshooting

• If you see a blank screen, check the following:

- Make sure the Status light on the projector is blue and not flashing.

- Press the  power button or the **A/V Mute** button on the remote control to wake the projector from standby or sleep mode, if necessary.

• If you see a blank screen when a computer is connected, check the following:

- On Windows, hold down the Windows key and press **P** at the same time, then click **Duplicate**.

- If you are using a Mac laptop with macOS 13 or newer, select **System Settings** > **Displays**. Select the projector, then choose the mirror option for your display from the Use as pop-up menu.

On macOS 12, select **System Preferences** > **Displays** > **Display Settings**. Select the projector, then choose the mirror option for your display from the drop-down menu.

On macOS 11 and older, open **System Preferences** and select **Displays**. Click the **Arrangement** tab and select the **Mirror Displays** checkbox.

- If the projector does not respond to remote control commands, make sure the batteries in the remote control are installed correctly. Replace the batteries if necessary.

## Registration

Scan the QR code to register for product updates and exclusive offers.



## Where to get help

### Manuals

For more information about using the projector, you can view or download the manuals from the Epson website, as described below.

### Internet support

Visit <http://latin.epson.com/support/plw56spl> to download software and utilities, view manuals, get troubleshooting advice, or contact Epson.

### Telephone support

You can also speak to a service technician by calling one of these numbers:

<b>Argentina</b>	0800-288-37766	<b>Guatemala*</b>	1-800-835-0358
<b>Bolivia*</b>	800-100-116	<b>Mexico</b>	800-087-1080
<b>Chile</b>	(56 2) 2484-3400	<b>Mexico City</b>	(52 55) 1323-2052
<b>Colombia</b>	01-8000-915235	<b>Nicaragua*</b>	00-1-800-226-0368
<b>Bogota</b>	601 602-4751	<b>Panama*</b>	00-800-052-1376
<b>Costa Rica</b>	800-377-6627	<b>Paraguay</b>	009-800-521-0019
<b>Dominican Republic*</b>	1-888-760-0068	<b>Peru</b>	0800-10126
<b>Ecuador*</b>	1-800-000-044	<b>Lima</b>	(51 1) 418-0210
<b>El Salvador*</b>	800-6570	<b>Uruguay</b>	00040-5210067

\* Contact your local phone company to call this toll-free number from a mobile phone.

If your country does not appear on the list, contact your nearest Epson sales office. Toll or long-distance charges may apply.

## Optional accessories

For a list of optional accessories, see the online *User's Guide*.

You can purchase accessories from an Epson authorized reseller. To find the nearest reseller, visit <http://latin.epson.com>.

## Limited Warranty

### 1. Limited Warranty for Epson Products

Epson products are covered by warranty against defects in workmanship and materials when operated under normal use and handling conditions, as indicated in the product documentation, for the period specified in section "Epson Limited Warranty Coverage." Coverage begins as of the date of delivery to the purchaser by Epson or by an authorized Epson dealer, in the country of purchase.

Epson also guarantees that the consumables (lamps, batteries, filters, and lenses) included with the product, will perform according to the usage specifications as long as they are used prior to the expiration of their warranty period.

### 2. Scope of Warranty

Should Epson receive notice of a defect during the warranty period, it may, at its discretion, repair or replace the defective product at no cost to the purchaser. In the event of a replacement, the replaced equipment will become property of Epson. The replaced item may be new or previously repaired to the Epson standard of quality, and will assume the remaining warranty period of the product that was originally purchased.

This warranty does not include any compensation or damages whatsoever, resulting from the operating failures of the Epson product. In any event, Epson's maximum liability toward the purchaser will be limited to the purchase price paid to Epson or to the authorized Epson dealer.

Epson's warranty does not cover any software not manufactured by Epson, even when delivered with an Epson product. The software may have a warranty provided by the manufacturer, as indicated in the documentation attached thereto.

This warranty is not transferable and no other warranties or guarantees, expressed or implied, are made under this warranty unless specifically stated above.

### 3. Limitations and Exclusions

The warranty will be invalid in the following cases:

- 3.1 When the product's serial number has been removed or altered.
- 3.2 When the product has been misused, has undergone unauthorized modifications, has been used or stored in ways that are not in compliance with the environmental specifications of the product.
- 3.3 When the damage resulted from the use of refilled supplies or consumables.
- 3.4 When damages resulted from the inappropriate transport of the equipment (packaging, installation, maintenance, transportation).
- 3.5 When damages were caused by natural or intentional disasters (fire, floods, lightning, earthquakes, etc.), power surges, or interaction with other brand products.
- 3.6 When the product has been totally or partially disassembled, or has been repaired other than by an Epson Authorized Service Center.
- 3.7 When substances have been spilled on the product.
- 3.8 When the external plastic case has been scratched or abused.
- 3.9 When damages resulted from inappropriate tests, installation, maintenance or adjustments.

The warranty does not extend to accessories (lids, covers, trays) or replenishing supplies and consumables (lamps, batteries, filters, and lenses), which, due to their nature, must be regularly purchased through authorized dealers.

### 4. How to Obtain Warranty Service

Please refer to the user documentation to ensure that the product settings have been properly set and to perform the diagnostic tests indicated therein. Furthermore, in order for the unit to operate optimally, always use original Epson supplies and consumables.

To obtain warranty service, the purchaser may take the product to any Epson Authorized Service Center, along with proof of purchase, or call any of the Epson Technical Assistance Centers (see "Telephone support" on the left).

Upon calling an Epson Authorized Service Center, the purchaser will be asked to provide the product model and serial numbers, and may be asked to provide information on the location and the date of purchase (the warranty is only valid in the country of purchase).

If there are no Authorized Service Centers in your area, call the Technical Assistance Center for service referral.

### 5. Responsibilities of Purchaser

The purchaser is responsible for the safety of all confidential and proprietary information stored on the product, as well as for recovery backup files in case of damage. Any activity related with the reinstallation or resetting of the software that was delivered with the equipment, will be billed to the purchaser at the rates in effect at the Epson Authorized Service Center. This also applies if the failure was the result of a defect in the purchaser's proprietary software or of a computer "virus."

In order to obtain on-site service, the purchaser will be required to provide: access to the product; an appropriate working area; access to electrical facilities; access to the resources that may be necessary for the installation, repair or maintenance of the unit; a safe environment for Epson staff and their work tools.

### 6. ARBITRATION

ANY DISPUTE, CLAIM, OR CONTROVERSY ARISING OUT OF OR RELATING TO THIS AGREEMENT, OR THE BREACH, TERMINATION, ENFORCEMENT, INTERPRETATION, OR VALIDITY THEREOF, INCLUDING THE DETERMINATION OF THE SCOPE OR APPLICABILITY OF THIS AGREEMENT TO ARBITRATE, SHALL BE DETERMINED BY ARBITRATION IN ORANGE COUNTY, CALIFORNIA, BEFORE ONE ARBITRATOR. THE ARBITRATION SHALL BE ADMINISTERED BY JAMS PURSUANT TO ITS COMPREHENSIVE ARBITRATION RULES AND PROCEDURES OR PURSUANT TO JAMS' STREAMLINED ARBITRATION RULES AND PROCEDURES, AS APPLICABLE. THE ARBITRATOR SHALL FOLLOW ANY APPLICABLE FEDERAL LAW AND CALIFORNIA STATE LAW IN RENDERING AN AWARD. JUDGMENT ON THE AWARD MAY BE ENTERED IN ANY COURT HAVING JURISDICTION. THIS CLAUSE SHALL NOT PRECLUDE PARTIES FROM SEEKING PROVISIONAL REMEDIES IN AID OF ARBITRATION FROM A COURT OF APPROPRIATE JURISDICTION.

### 7. REMEDIES; DISCLAIMER OF WARRANTIES

EPSON'S SOLE AND EXCLUSIVE LIABILITY AND YOUR EXCLUSIVE REMEDY FOR BREACH OF WARRANTY SHALL BE LIMITED TO EITHER, AT EPSON'S OPTION, REPAIR OR REPLACEMENT AS SET FORTH ABOVE. THE WARRANTY AND REMEDY PROVIDED ARE EXCLUSIVE AND IN LIEU OF ALL OTHER EXPRESSED OR IMPLIED WARRANTIES INCLUDING, BUT NOT LIMITED TO, THE IMPLIED WARRANTIES OF MERCHANTABILITY, FITNESS FOR A PARTICULAR PURPOSE, AND NON-INFRINGEMENT. SOME LAWS DO NOT ALLOW THE EXCLUSION OF IMPLIED WARRANTIES. IF THESE LAWS APPLY, THEN ALL EXPRESS AND IMPLIED WARRANTIES ARE LIMITED TO THE TERM OF THIS AGREEMENT. UNLESS STATED HEREIN, ANY STATEMENTS OR REPRESENTATION MADE BY ANY OTHER PERSON OR FIRM ARE VOID. SOME STATES DO NOT ALLOW LIMITATIONS ON HOW LONG IMPLIED WARRANTIES LAST, SO THE ABOVE LIMITATIONS MAY NOT APPLY TO YOU.

### 8. EXCLUSION OF DAMAGES; EPSON'S MAXIMUM LIABILITY

IN NO EVENT SHALL EPSON OR ITS AFFILIATES BE LIABLE FOR ANY SPECIAL, INCIDENTAL, OR CONSEQUENTIAL DAMAGES OR ANY LOST PROFITS, COST OF SUBSTITUTE EQUIPMENT, DOWNTIME, CLAIMS OF THIRD PARTIES, INCLUDING END USERS OR CUSTOMERS, OR INJURY TO PROPERTY, RESULTING FROM THE USE OR INABILITY TO USE THE EPSON PRODUCT OR OBTAIN SERVICE UNDER THIS AGREEMENT, WHETHER RESULTING FROM BREACH OF WARRANTY OR ANY OTHER LEGAL THEORY. IN NO EVENT SHALL EPSON OR ITS AFFILIATES BE LIABLE FOR DAMAGES OF ANY KIND IN EXCESS OF THE ORIGINAL RETAIL PURCHASE PRICE OF THE PRODUCT. SOME STATES DO NOT ALLOW EXCLUSION OR LIMITATION OF INCIDENTAL OR CONSEQUENTIAL DAMAGES, SO THE ABOVE LIMITATIONS MAY NOT APPLY TO YOU.

### 9. Other Provisions

**9.1 Other Rights You May Have:** This Epson limited warranty gives you specific legal rights, and you may also have other rights, which vary from jurisdiction to jurisdiction. Some jurisdictions do not allow the exclusion or limitation of incidental or consequential damages, so the above limitations or exclusions may not apply to you.

**9.2 Governing Law:** Except for claims subject to arbitration pursuant to section 6, "ARBITRATION", you and Epson agree that the law of the state or country where you reside shall govern.

**9.3 Jurisdiction:** Except for claims subject to arbitration pursuant to section 6, "ARBITRATION", in the event of a dispute you and Epson both consent to the jurisdiction of the courts in your state of residence or, if you do not reside in a state, then of the courts in Orange County, California.

### 10. Epson Limited Warranty Coverage

<b>Product:</b>	Projector
<b>Model:</b>	PowerLite W56S+
<b>Duration:</b>	Two (2) years
<b>Conditions:</b>	Service Center

**Note:** Lamp has a ninety (90) day warranty.

### Technical Support Service

Epson offers technical assistance through electronic and telephone services. Before calling Epson, refer to the documentation included with your product. If you do not find the solution to your problem, visit Epson's website at: <http://latin.epson.com/support>.

You may receive help or consult information online for all Epson products. Go to Epson's website at <http://latin.epson.com/support> and search for your product. To register your product, go to <http://latin.epson.com/registro>.

### Extended Warranty Service and Support

In some countries, Epson offers warranty extension services. You may purchase this service by calling the Technical Assistance Center.

### Epson Subsidiaries and Offices in Latin America

**Epson Argentina S.R.L.**  
San Martín 334, Piso 4  
(C1004AAH), Buenos Aires  
Argentina  
Tel: 0800-288-37766

**Epson Colombia Ltda.**  
KM 1.8 Autopista Medellín  
Sector Costado Sur de la  
Calle 80, Parque Industrial  
SOKO, Oficina 301  
Cota, Cundinamarca  
Colombia  
Tel: (57) 601 602-4750

**Epson México, S.A. de C.V.**  
Blvd. Manuel Ávila Camacho  
No. 389, Col. Irrigación  
Alcaldía Miguel Hidalgo  
C.P. 11500  
Cd. de México, México  
Tel: (52 55) 1323-2000

**Epson Chile S.A.**  
La Concepción 322  
Providencia, Santiago, Chile  
Tel: (56 2) 2484-3400  
Fax: (56 2) 2484-3413

**Epson Costa Rica S.A.**  
102 Avenida Escazú  
Torre 1, Piso 4, Suite 401/402  
Escazú, San José, Costa Rica  
Tel: (506) 2588-7855  
Fax: (506) 2588-7888

**Epson Perú S.A.**  
Av. Canaval y Moreyra 590  
San Isidro, Lima 27, Perú  
Tel: (51 1) 418-0210  
Fax: (51 1) 418-0220

**EPSON®**



EPSON is a registered trademark and iProjection and PowerLite are trademarks of Seiko Epson Corporation.

Mac, macOS, and OS X are trademarks of Apple Inc., registered in the U.S. and other countries.

Android and Chromebook are trademarks of Google LLC.

Windows is a trademark of the Microsoft group of companies.

General Notice: Other product names used herein are for identification purposes only and may be trademarks of their respective owners. Epson disclaims any and all rights in those marks.

This information is subject to change without notice.

© 2024 Epson America, Inc., 12/24  
Printed in XXXXXX

CPD-65251