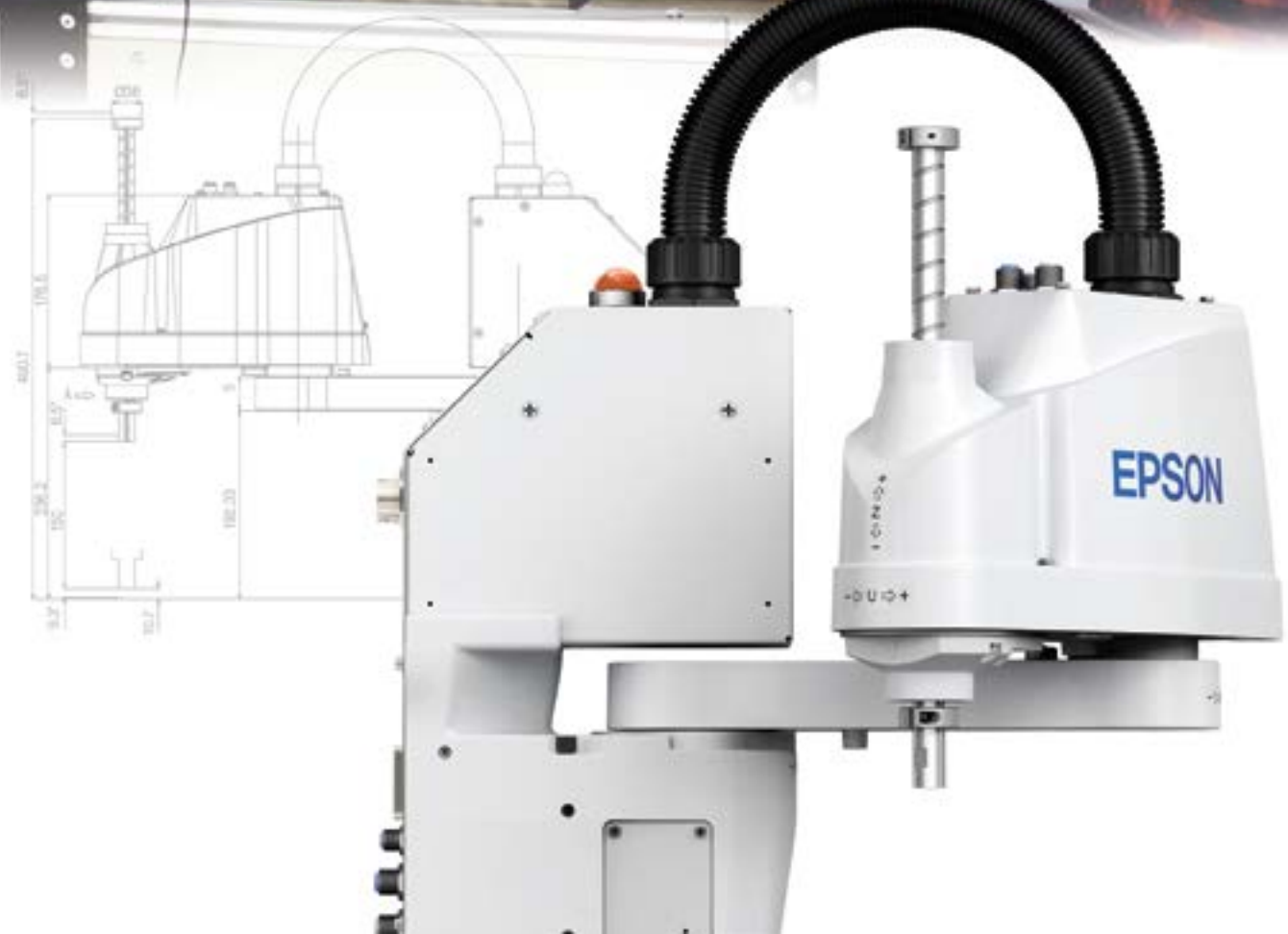


**EPSON**<sup>®</sup>  
EXCEED YOUR VISION

T3 ALL-IN-ONE  
SCARA ROBOT



# The Revolutionary **Epson**<sup>®</sup> **T3 All-in-One SCARA Robot**



Looking to automate your factory without wasting time or money on complex slide-based solutions? Now you can — with the **groundbreaking T3 All-in One SCARA robot from Epson**, the #1 SCARA robot manufacturer in the world. This innovative robot offers fast, easy integration and takes less time to install than most automation solutions available. With 110 V and 220 V power and a wide variety of options, including integrated vision guidance, the T3 All-in-One truly has it all.

# T3 ALL-IN-ONE



## Simplicity Redefined in a Compact All-in-One Solution

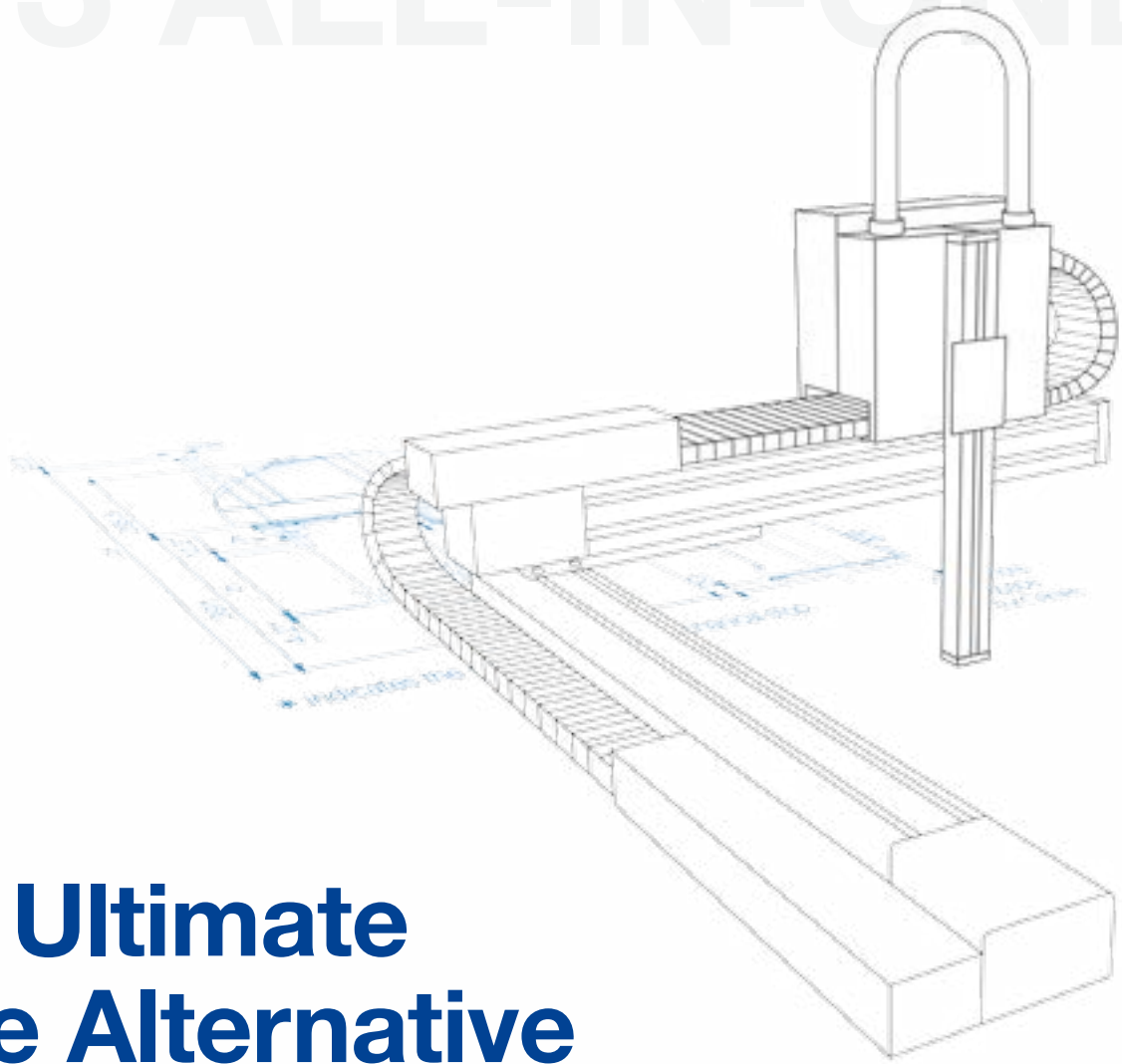
**What about space constraints?** The T3 virtually eliminates that issue. With a built-in controller, plus built-in power for end-of-arm tooling, this space-saving all-in-one has everything you need — and installs in minutes. Plus, it includes the same intuitive Epson RC+® software and powerful features found in Epson's high-end robots.

The T3 All-in-One SCARA robot with built-in controller provides fast integration at an ultra low cost

## Feature-packed at an Amazing Price

- **Easy to install, fast integration** — unlike complex linear-slide systems, the T3 installs in minutes and requires less time and money for system integration
- **All-in-One solution** — built-in controller with power for end-of-arm tooling; takes up less space than linear-slide solutions
- **Full featured, ultra low cost** — includes same powerful feature set as Epson's high-end robot lineup at an incredibly affordable price
- **Built-in controller** — saves critical workspace with the controller conveniently housed in the robot's base
- **Easy to use** — intuitive and feature-packed Epson RC+ development software makes it easy to create powerful solutions
- **Comes standard with 110 V and 220 V power** — low wattage and power consumption (no special panel or plug required)

# T3 ALL-IN-ONE

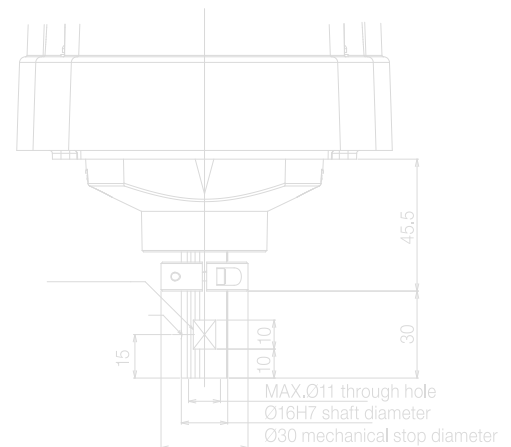


## The Ultimate Slide Alternative

**The T3 All-in-One SCARA robot** takes up less space than linear-slide solutions, while providing a large work envelope. The perfect alternative for your automation workflow, it offers a number of significant advantages, including:

- Faster integration/installation
- All-in-One design with built-in controller and power for end-of-arm tooling
- Faster cycle times
- Reduced footprint
- Lower total cost of ownership
- Powerful options including Epson's integrated Vision Guide
- 4 built-in axes in one compact design

Slide installations can be extremely complex and many slides require constant adjustments



Detail of A





## Automation Applications

The T3 All-in-One SCARA robot is extremely versatile, providing a wide range of automation possibilities:

- Assembly
- Pick and place
- Material handling
- Packaging
- Kitting/Tray loading
- Machine tending
- Screw driving
- Dispensing
- Palletizing
- Lab analysis and testing
- Inspection and test
- Finishing
- Grinding/Polishing

## Options and Accessories

### Integrated Vision Guidance

- **Highly regarded in the industry** as simple to use with a wide variety of powerful tools, Epson Vision Systems have provided integrated robot guidance for over 20 years. Our Vision Guide software features high performance tools in an intuitive point-and-click environment.



T3 shown with mobile mounted camera as a part of the Epson Vision Guide option

### Fieldbus Interface Options

- **Fieldbus I/O interfaces** are used in factories worldwide to reduce cabling costs and setup time, and promote standard device usage. However, there is not one accepted Fieldbus I/O standard. That's why we offer a wide variety of options including:
  - Ethernet/IP
  - DeviceNet
  - EtherCAT
  - PROFINET
  - PROFIBUS
  - CC-Link

### GUI Builder

- **Epson's GUI Builder provides** the tools necessary to create graphical user interfaces from within the Epson RC+ Development Environment. With the GUI Builder toolset built in, users can work from one development environment, which helps reduce overall development time.
  - Create GUI's without Visual Studio or other third-party software tools
  - Create and debug GUI forms from your Epson RC+ Project
  - Form and control events are executed as SPEL+ tasks

- **SPECIALLY PRICED**  
T3 All-in-One + vision guidance bundle available with PV1 Vision Guide.

See your local reseller for more information.



## SPECIFICATIONS

**Mounting Type** Tabletop  
**Arm Length (Joints #1 and #2)** 400 mm

**Payload**  
 Rated: 1 kg  
 Max.: 3 kg

**Repeatability**  
 Joint #1 and 2: ±0.02 mm  
 Joint #3: ±0.02 mm  
 Joint #4: ±0.02 deg

**Standard Cycle Time**<sup>1</sup> 0.54 sec

### Max. Motion Range

Joint #1: ±132 deg  
 Joint #2: ±141 deg  
 Joint #3: 150 mm  
 Joint #4: ±360 deg

**Weight (cables not included)** 16 kg: 35 lb

**Joint #4 Allowable Moment of Inertia**  
 Rated: 0.003 kg-m<sup>2</sup>  
 Max.: 0.01 kg-m<sup>2</sup>

**Joint #3 Downward Force** 83 N

### User Electric Lines

Hand I/O: IN6/OUT4 (D-sub 15-pin)  
 User I/O: IN18/OUT12

### User Pneumatic Lines

ø6 mm x 2, ø4 mm x 1

<sup>1</sup> Cycle time based on round-trip arch motion  
 (300 mm horizontal, 25 mm vertical).

## OTHER

**Power** AC 100 – 240 V  
**Power Consumption** 660 Va  
**Power Cable Length** 5 m  
**Controller** Inside of manipulator

### Safety Standard

CE Mark: EMC directive, machinery directive,  
 RoHS directive  
 ANSI/RIA R15.06-2012  
 NFPA 79 (2007 Edition)

## WHAT'S IN THE BOX

T3 robot  
 Robot power cable  
 Epson RC+ software  
 USB cable  
 E-Stop unit with cable  
 T3 Robot System Safety & Installation Manual  
 Connector set (I/O, hand I/O and safety circuit  
 connectors)

## SUPPORT

**Customer Service** (562) 290-5920,  
 service@robots.epson.com

**Applications Support** (562) 290-5930,  
 applications@robots.epson.com

**Sales Inquiries** (562) 290-5997,  
 info@robots.epson.com

## ORDERING INFORMATION

Product Name	Product Code
T3 All-in-One SCARA Robot	RT3-401SS

### Options

Integrated Vision Guidance	Contact Epson
OCR (for use with Vision Guide)	R12NZ920H3
Epson RC+ 7.0 API	R12NZ900AE
GUI Builder 7.0	R12NZ900AH
External Control Point (ECP) Option	R12NZ900AF
TP3 – Teach Pendant	R12NZ900N3
TP2 – Teach Pendant	R12NZ900L9
Ethernet/IP Fieldbus I/O (Slave)	R12NZ900TH
Ethernet/IP Fieldbus I/O (Master)	R12NZ900NZ
DeviceNet Fieldbus I/O (Slave)	R12NZ900TE
DeviceNet Fieldbus I/O (Master)	R12NZ900NX
PROFINET Fieldbus I/O (Slave)	R12NZ900TG
PROFIBUS Fieldbus I/O (Slave)	R12NZ900TF
PROFIBUS Fieldbus I/O (Master)	R12NZ900NY
EtherCAT Fieldbus I/O (Slave)	R12NZ900TX
CC-Link Fieldbus I/O (Slave)	R12NZ900TD





## Epson Business Solutions

Epson is a leading provider of innovative technology solutions that help businesses succeed. We partner with you to best meet your specific needs, focusing on:

- Improved productivity
- World-class customer service and support
- Cost-effective, high-quality solutions
- A commitment to the environment

Discover how Epson can help you work toward the future. [www.epson.com/forbusiness](http://www.epson.com/forbusiness)

**Epson America, Inc.**  
3840 Kilroy Airport Way, Long Beach, CA 90806

**Epson Canada Limited**  
185 Renfrew Drive, Markham, Ontario L3R 6G3

[www.epson.com](http://www.epson.com)  
[www.epson.ca](http://www.epson.ca)  
[www.epsonrobots.com](http://www.epsonrobots.com)

**Better Products for a Better Future™**  
[eco.epson.com](http://eco.epson.com)