

EPSON RC+ 4.1.1 SP1 Release Notes

February 28, 2006

Thank you for using EPSON RC+ 4.1.1. This document contains the latest information for this release. Please read before using this software.

DOCUMENTATION	1
GETTING STARTED	2
UPGRADING FROM PREVIOUS VERSIONS OF EPSON RC+	2
CHANGING MEMORY SIZE FOR SYSTEMS USING VISION GUIDE	2
INSTALLING SERVICE PACK 1	3
HOW TO VERIFY IF SERVICE PACK 1 IS INSTALLED.....	3
HOW TO INSTALL SERVICE PACK 1	3
HOW TO UNINSTALL SERVICE PACK 1	3
INSTALLING ON WINDOWS XP FOR OFFLINE DEVELOPMENT	3
RC+ UPGRADE	4
AUTO START DOES NOT WORK AFTER UPGRADING FROM 3.X VERSIONS	4
VB GUIDE	4
UPGRADING FROM 3.X VERSIONS	4
APPLICOMIO v2.2 SERVICE PACK 1 REQUIRED FOR PROFIBUS SLAVE ONLY.....	5
OFFLINE DEVELOPMENT	5
PROGRAMS DO NOT RUN CORRECTLY AFTER MOVING PROJECT FROM OFFLINE TO ONLINE SYSTEM	5
FIELDBUS LABELS CANNOT BE EDITED OFFLINE	5
MOTION	5
POSITION SHIFT CAN OCCUR WHEN USING CP MOTION	5
ACCELERATION IS NOT OPTIMAL WHEN ARCH IS USED.....	5
I/O MONITOR	6
I/O MONITOR DOES NOT WORK FOR FIELDBUS WHEN CTRLDEV IS REMOTE	6
RC420	6
LED DISPLAY IS INCORRECT	6

Documentation

All RC+ manuals are in PDF format and are installed on the PC hard disk. These manuals are accessible from the RC+ environment Help menu.

Getting Started

Read the Getting Started chapter in the EPSON RC+ User's Guide. This chapter will refer you to the RC520 / RC420 Controller manuals Installation chapter. This contains information for initial connections and start up.

Upgrading from Previous Versions of EPSON RC+

You may install EPSON RC+ 4.1.1 without uninstalling the previous version. This is recommended because the upgrade software will know which options were previously installed and your system configuration will be preserved.

1. If your current system is running on Windows NT 4.0, you must first upgrade to Windows 2000 Professional before upgrading to EPSON RC+ 4.1.1.
 - a. Execute MKVER before upgrading to save your system configuration. Select Tools | Maintenance, then click MKVER. Enter a name and save it to floppy.
 - b. Upgrade Windows NT 4.0 to Windows 2000.
 - 1) Boot Windows NT.
 - 2) Insert the Windows 2000 CD.
 - 3) When asked if you want to upgrade the current version of Windows, answer Yes.
 - 4) The Windows 2000 installation will preserve the registry and previous applications.
 - c. Install Windows 2000 Service Pack 4. This service pack must be installed before you can install EPSON RC+ 4.1.1.
2. Install EPSON RC+ 4.1.1. During installation, the options that were installed previously should be checked. The previous robot and drive unit configurations will be restored.

Note: When upgrading Vision Guide systems, you may receive an error during vision driver installation concerning mtxdma drivers. These errors can be ignored. Also, the RC+ installer will first remove the previous vision system drivers and reboot the system. Then it will continue installation.

3. EPSON RC+ 4.1.1 ships with Adobe Reader 7.0. On new installations, the reader is automatically installed. When upgrading RC+, Adobe Reader is not upgraded. You can manually upgrade by running the Adobe Reader 7.0 installer found on the RC+ installer CD in the Adobe_Reader directory.

Changing memory size for systems using Vision Guide

If you want to change the size of memory used on your system and you are using Vision Guide, you must do a repair installation after upgrading memory. If you do not repair the RC+ installation, Windows will not recognize the memory changes and the vision system will not work properly. Follow these steps to upgrade memory:

1. Shutdown the system.
2. Upgrade the memory.
3. Start the system.
4. Run the RC+ installer.
5. Select the repair option and continue.

The repair installation will uninstall the vision drivers, reboot the system, then reinstall the vision drivers using the new memory size.

Installing Service Pack 1

EPSON RC+ 4.1.1 Service Pack 1 is included on the current 4.1.1 installation CD. It is not automatically installed with the 4.1.1 installation program. It must be installed separately. If your system was configured at the factory, the service pack will already be installed.

How to verify if Service Pack 1 is installed

1. Run EPSON RC+.
2. Select Help | About.
3. If the service pack is installed, the version number will be 4.1.1 SP1.

How to install Service Pack 1

To install Service Pack 1:

1. Navigate to the \Service_Packs directory on the installation CD.
2. Run the file **rc411sp1.exe** and follow the on screen instructions.

How to uninstall Service Pack 1

To uninstall Service Pack 1:

1. Open Add / Remove Programs in the Windows Control Panel.
2. Select EPSON RC+ 4.0 and run it.
3. Select Repair.
4. This will re-install 4.1.1 and remove the changes made by the service pack installation.
5. If a previous service pack exists, you can add it now.

Installing on Windows XP for offline development

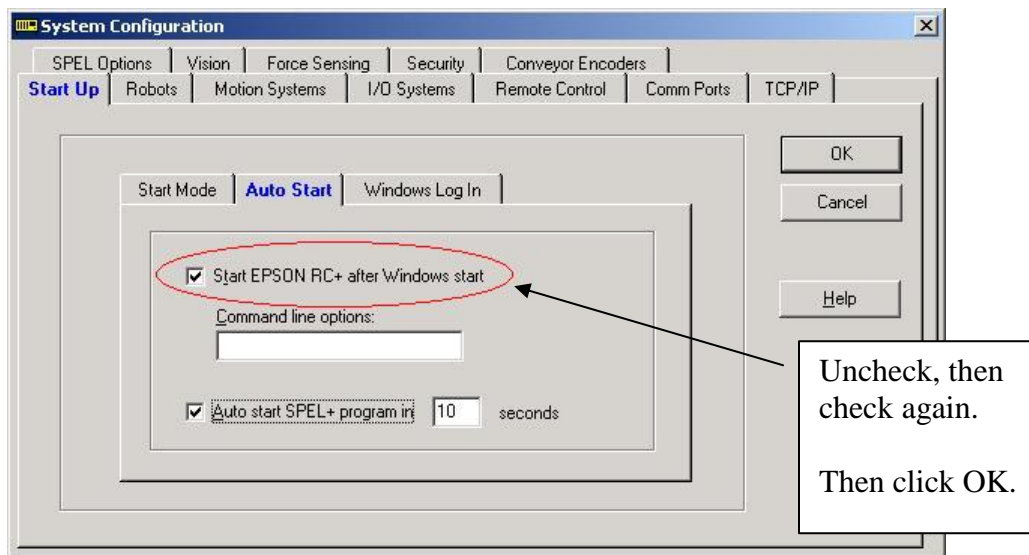
EPSON RC+ 4.1.1 can be installed on a Windows XP system for offline development only. You can edit and compile your projects. You cannot install the SPEL drivers on a Windows XP system, so programs will not run. Also, if Vision Guide is installed, only VGA mode is supported.

RC+ Upgrade

Auto start does not work after upgrading from 3.x versions

If RC+ was configured to auto start after Windows start, it will no longer start up automatically after upgrading to a 4.x version. This is easily fixed.

1. Run EPSON RC+. Click **Change Startup Mode**. Select **Program / Debug**, then click **OK**.
2. Select Setup->System Configuration. On the **Start Up** tab, click the **Auto Start** tab. Uncheck **Start EPSON RC+ after Windows start**. Then check it again. Click **OK**.



3. Continue working in RC+ or exit the application.

VB Guide

Upgrading from 3.x versions

After upgrading to EPSON RC+ 4.1.1 from 3.x versions, you must upgrade your SPELCom and SPELVideo controls in your VB projects that use VB Guide.

Follow these steps:

1. Open your VB project.
2. Select Components from the Project menu.
3. Check the EPSON SPELCom 4.0 ActiveX Control and EPSON SPELVideo 4.0 Active X Control (if required) and click OK.
4. For every form that has a SPELCom or SPELVideo control, delete the control, then replace it with the new control from the tool box.
5. Select Components from the Project menu.

6. Uncheck EPSON SPELCom 3.0 ActiveX Control and SPELVideo 3.0 ActiveX Control.
7. Save changes.
8. Compile your project.

applicomIO v2.2 Service Pack 1 required for Profibus slave only

If you are using your system as a Profibus slave only (not Master/Slave), you need to install applicomIO v2.2 Service Pack 1 after installing the applicomIO software that came with your Profibus board. You can obtain this service pack from the Internet. Go to www.applicom-int.com, then navigate to Support, Patches & Updates.

Offline Development

Programs do not run correctly after moving project from offline to online system

Note: This has been fixed in Service Pack 1

After changing a project on an offline system and moving it to an online system, the system is not detecting that the project was moved. You must execute Project->Rebuild on the online system.

Fieldbus labels cannot be edited offline

Before you can edit Fieldbus I/O labels on an offline system, you must copy the \EpsonRC\Fbusio\fbus.dat file from the online system to the same folder on the offline system.

Motion

Position shift can occur when using CP motion

Note: This has been fixed in Service Pack 1

When points with certain coordinates are used with CP motion commands, then a position shift can occur over time.

Acceleration is not optimal when Arch is used

Note: This has been fixed in Service Pack 1

Then Z auto acceleration feature when using Arch parameter in Jump command sometimes does not work and acceleration is reduced.

I/O Monitor

I/O Monitor does not work for Fieldbus when CtrlDev is remote

Note: This has been fixed in Service Pack 1

When remote I/O is enabled from the Run Window and the I/O monitor is used to monitor Fieldbus I/O, EPSON RC+ no longer responds to keyboard or mouse commands, except for Alt+F4 (exit application).

RC420

LED display is incorrect

Note: This has been fixed in Service Pack 1

When a system error occurs, the controller's front panel LED display is not showing it correctly.