

EPSON RC+ 7.1.4 Release Notes

August 11, 2015

Thank you for using EPSON RC+ 7.1.4. This document contains the latest information for this release. Please read before using this software.

DOCUMENTATION	2
GETTING STARTED	2
WHAT'S NEW IN VERSION 7.1.4	2
WHAT'S FIXED IN VERSION 7.1.4	2
VISION GUIDE 7.0	3
TROUBLESHOOTING GIGE CAMERA DRIVER INSTALLATION.....	3

Documentation

All RC+ manuals are in PDF format and are installed on the PC hard disk. These manuals are accessible from the EPSON RC+ 7.0 environment Help menu.

Getting Started

Read the Getting Started chapter in the EPSON RC+ 7.0 User's Guide. This chapter will refer you to the RC700 Controller manual Installation chapter. This contains information for initial connections and start up.

What's New in version 7.1.4

1. Added vision calibration enhanced distortion correction.
2. Added ellipse search for Arc Finder and Arc Inspector.
3. Added auto threshold for Blob and ImageOp.
4. Added grid display for Sequence.
5. Added improvements for guidance during teaching of vision calibration points.
6. Added enhancements for Correlation and Geometric search.
7. Now the GUI Language preference can be changed without restarting RC+.

What's Fixed in version 7.1.4

General

1. Fixed a problem where sometimes stepping through Spel code caused exceptions when using a touch screen monitor.
2. Fixed a problem for the Spel language parser for large hexadecimal numbers. For example: If a UInt32 variable is set to &HFFFFFFFE, the value compiled value is 4294901760, but it should be 4294967294.

API

3. Fixed a null reference exception that sometimes occurred during Initialize. This also fixes a problem for LabVIEW where the program would crash during Initialize, or if the program was aborted, or an error exception occurred from the API.
4. Now the RC+ server process is re-started if the API program was aborted before Dispose was called and then started again.
5. Fixed a problem where when a LabVIEW program was aborted before Dispose was executed, a message box was displayed with the message "Thread was being aborted.". Now the message is not displayed.
6. Fixed a problem for the Call method. If a Spel function returning Boolean was called, the return value was always True.

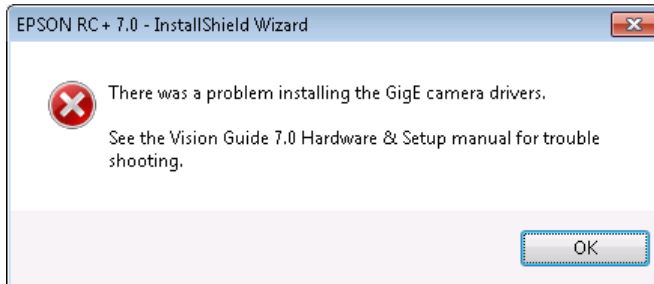
GUI Builder

7. Fixed a problem for GUI Builder where the LED controls or Text controls using variables were not updated when a form was not opened at startup.

Vision Guide 7.0

Troubleshooting GigE Camera Driver Installation

The following message may be displayed after the installation of EPSON RC+ 7.0 GigE camera drivers.

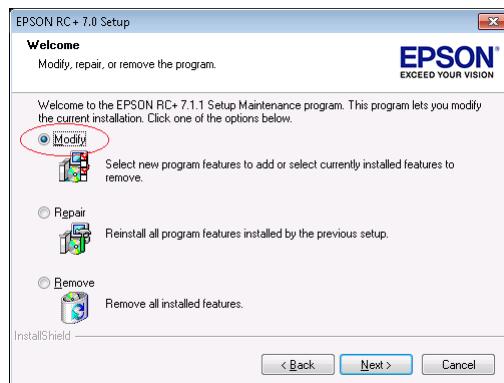


In this case, please refer to the following sections in the Vision Guide 7.0 Hardware & Setup manual:

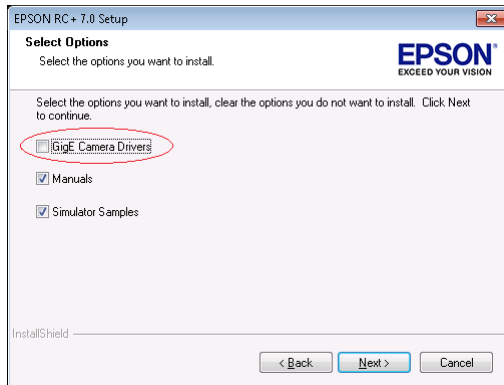
- Setup
- 2 Software Configuration
 - 2.2 Network Configuration of Vision PC
 - 2.2.1 Network Driver Setting Confirmation
 - 2.2.2 Filter Driver Setting
- 6 Trouble Shooting
 - “FilterDriver” Installation Error Occurred

After make the recommended changes, you will need to re-install the GigE camera drivers. Perform the following steps:

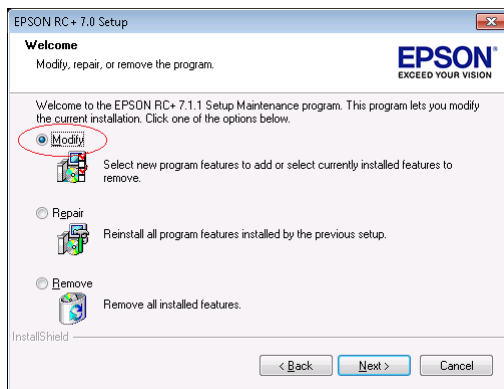
1. Start the EPSON RC+ 7.0 installer.
2. Select Modify, then click Next.



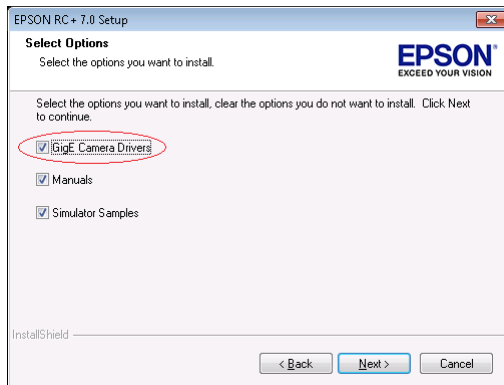
3. Uncheck GigE Camera Drivers and click Next.



4. Click Next and finish the installation.
5. Start the EPSON RC+ 7.0 installer.
6. Select Modify.



7. Check GigE Camera Drivers and click Next.



8. Click Next and finish the installation.