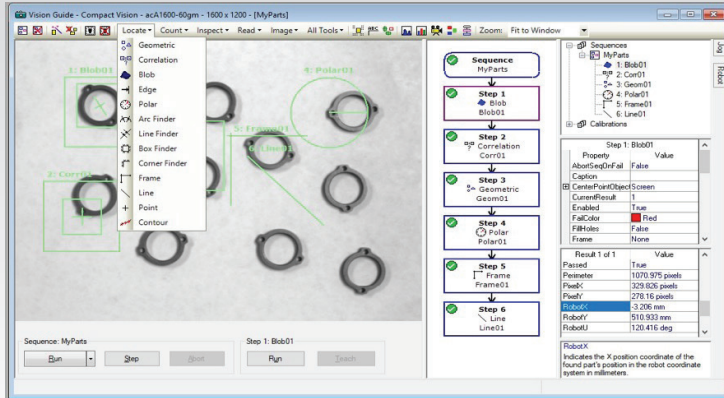


# Epson® Vision Guide



Robot Solutions

Factory Automation

## Integrated vision guidance with easy configuration and calibration.

**Integrated vision guidance solution** — designed with tools specifically made for vision guidance applications

**Wizard-based setup** — for fixed and mobile camera/robot calibration; with auto calibration and no-touch calibration solutions

**Fast development with point-and-click interface** — fully integrated into the Epson RC+® development environment

**Combination robot/vision simulator** — for rapid offline testing and development

**Low-cost scalable system** — accommodates multi-camera applications

**High-precision parts placement** — features built-in kinematic equations and advanced algorithms

**Powerful vision tools** — full suite of options for a wide variety of applications and industries

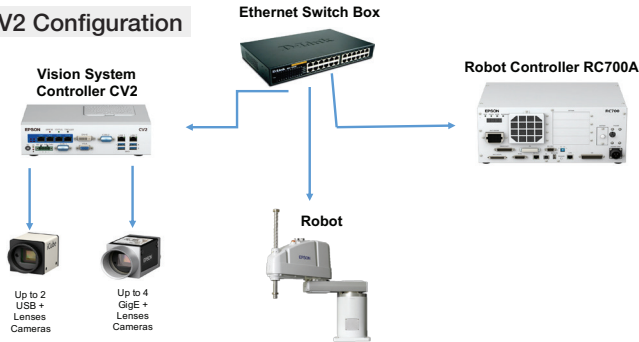
**Intuitive operation** — easy to learn and use for entry-level to advanced users

**Powerful throughput** — CPU and vision processing runs parallel with Epson robot controllers

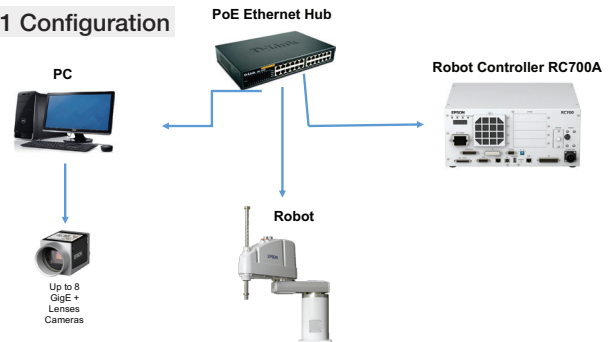
**Expansive camera support** — supports up to 8 GigE and 2 USB cameras, up to 10MP monochrome cameras and 5MP color cameras

System	CV2SA	CV2HA	PV1	
Robot Controller	RC90 (RC+ 7.0 Version), RC700A, T-Series			
Cameras Supported	GigE: Mono (0.3MP, 2.0MP, 5.0MP and 10.0MP) and Color (2.0MP and 5.0MP) USB: Mono (0.3MP, 1.3MP)			
Vision Tools	Locate: Geometric, Correlation, Blob, Edge, Polar, Arc Finder, Line Finder, Box Finder, Corner Finder, Frame, Line, Point and Contour Count: Blob, Correlation, Geometric Inspect: Blob, Defect Finder, Line, Line Inspector, Arc Inspector and Color Match Read: Code Reader and OCR, Image: ImageOp and Text			
Quantity of Connectable Cameras	Up to 6 cameras (2 USB and 4 GigE cameras)		Up to 8 GigE cameras	
Image Processing Speed	Standard type	High-speed type	N/A	
CV Firmware	Version 3.x.x.x (2.x.x.x is not applicable)			
RAM	4GB		N/A	
Compact Flash	8GB		N/A	
Safety Standard	CE, UL, KC		N/A	
Dimensions W x D x H (Excluding rubber feet)	232 mm x 175 mm x 70 mm		N/A	
Operating Temperature and Humidity	5~40 deg C, 20~80% (non-condensing)		N/A	
Direction of Installation	Sideway and Vertical		N/A	
Power Source Voltage	DC 19 ~ 24 V		N/A	
Rated Electric Current	11.57 A (at 19 V DC) ~ 9.16 A (at 24 V DC)		N/A	
Weight	2.1 kg		N/A	
Interface (connection)	Ethernet (for communication with Robot Controller)	RJ45: 2 Ports (10M/100M/1000Mbps). Pre-bridge setting for the 2 ports. Can be connected to HUB and Switch.		
	Ethernet (for GigE Camera)	RJ45: 4 Ports (1000Mbps). Power Over Ethernet (PoE) supported. Cannot connect to HUB and Switch.		
	USB	USB 2.0: 4 Ports (for USB Camera, USB Memory, Mouse, Keyboard)		
		USB Camera	Only Epson cameras supported	
		USB Memory	USB Memory that meets standard USB 2.0 or greater Supported Format: FAT32 * Standard USB 1.1 is not supported. * USB Memory with Security Function not supported.	
		Mouse	USB Mouse that meets HID Standard Number of Buttons: 2 or more Connection Method: Wired or Wireless	
		Key board	USB Key board that meets HID Standard 104 English Key board 106 Japanese Key board Connection Method: Wired or Wireless	
Monitor Connection	VGA: 1 Port, DVI-D: 1 Port (SXGA fixed) * The 2 ports display the same output (mirror display)			
CON1, CON2	Not available to use			
CV2 Standard Accessories	Mounting Plates (1 set), Power Supply Connector (1 pc), Connector Cap for CON (2 pcs)		N/A	

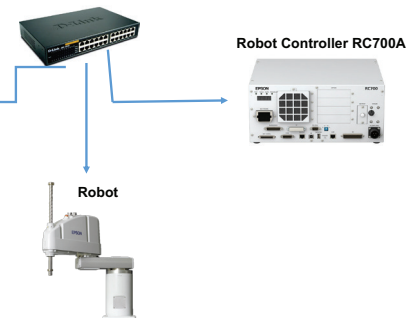
**CV2 Configuration**



**PV1 Configuration**



**PoE Ethernet Hub**



**Eco Features**

- Epson America, Inc. is a SmartWay® Transport Partner<sup>1</sup>
- SmartWay is an innovative partnership of the U.S. Environmental Protection Agency that reduces greenhouse gases and other air pollutants and improves fuel efficiency.

See the latest innovations from Epson Business Solutions at [www.epson.com/forbusiness](http://www.epson.com/forbusiness)

**Better Products for a Better Future™**  
eco.epson.com



**Epson America, Inc.** 3840 Kilroy Airport Way, Long Beach, CA 90806  
**Epson Canada Limited** 185 Renfrew Drive, Markham, Ontario L3R 6G3  
[www.epson.com](http://www.epson.com)  
[www.epson.ca](http://www.epson.ca)

Specifications and terms are subject to change without notice. EPSON and Epson RC+ are registered trademarks, EPSON Exceed Your Vision is a registered logomark and Better Products for a Better Future is a trademark of Seiko Epson Corporation. SmartWay is a registered trademark of the U.S. Environmental Protection Agency. All other product and brand names are trademarks and/or registered trademarks of their respective companies. Epson disclaims any and all rights in these marks. Copyright 2019 Epson America, Inc. Com-SS-Oct-13 CPD-56561 1/19

**Contact:**

