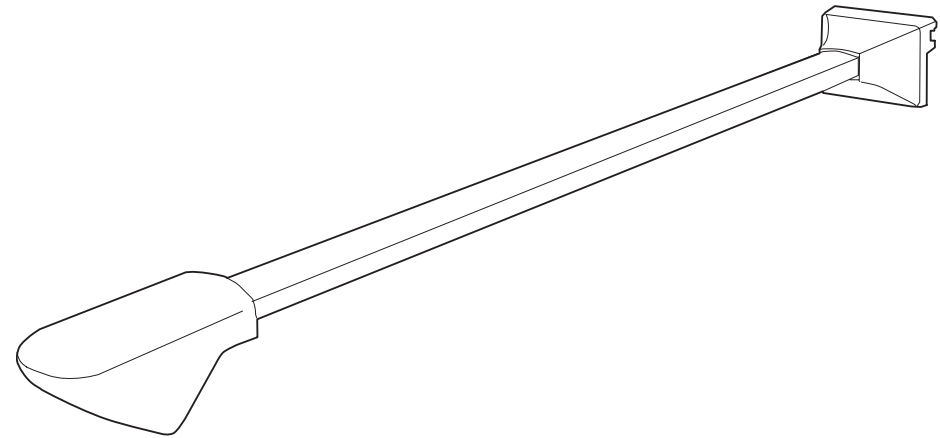


EPSON
EXCEED YOUR VISION



ELPIU01 Interactive Unit User's Guide



Important Safety Instructions

- Make sure you read the *Quick Setup Guide* and follow the instructions in this document to install the Interactive Unit.
- Keep the *Quick Setup Guide* for future reference.

Explanation of Symbols

 Warning	This symbol indicates information that, if ignored, could possibly result in personal injury or even death due to incorrect handling.
 Caution	This symbol indicates information that, if ignored, could possibly result in personal injury or physical damage due to incorrect handling.

Installation Precautions

Warning

- Installation of the product on the wall should be performed by qualified technicians using only approved mounting equipment.
- Incomplete or incorrect installation could cause the product to fall and cause personal injury or property damage.
- If you apply adhesives to prevent the screws from loosening, or if you use lubricants or oils on the wall plate, the housing may crack and cause the product to fall, resulting in personal injury or property damage.
- Handle the USB cable carefully to avoid fire or electric shock. Observe the following precautions when handling:
 - Do not handle the cable with wet hands.
 - Do not use a cable that is damaged or modified.
 - Do not pull the cable with too much force when routing it or connecting it to a computer.
- Do not hang on the arm or hang a heavy object on it.
- If the product or wall plate falls, it could cause personal injury or property damage.
- When you mount the product on the wall with the wall plate, the wall requires enough strength to hold the product and the wall plate. Confirm the weight of the product and the wall plate before installation, and maintain the strength of the wall. If the wall is not strong enough, reinforce the wall before installation.
- Do not install the wall plate in a location where it might be exposed to vibration or shock, which could cause damage to the product or mounting surface. It could also cause the wall plate or projector to fall, resulting in personal injury or property damage.
- Tighten all screws firmly after adjustment. Otherwise, the product or wall plate may fall and cause personal injury or property damage.
- Never loosen the bolts and nuts after installation.
- Confirm on a regular basis that the screws have not become loose. If you find any loose screws, tighten them firmly. Otherwise, the product or wall plate may fall and cause personal injury or property damage.
- Follow the instructions in the *Quick Setup Guide* when installing the wall plate. Otherwise, the wall plate may fall, resulting in personal injury or property damage.

Caution

- Do not install the product in a location where there is excessive humidity or dust, near cooking or heating appliances, or in a location exposed to smoke or steam. Fire or electric shock may result.
- Do not use excessive force when adjusting the product. Otherwise, the product may cause personal injury.

Usage Precautions

Warning

- Water infiltration or deterioration and breakage of the product housing could result in electric shock.
- Never open any covers on the product except as specifically explained in this *User's Guide*. Never attempt to disassemble or modify the product (including consumables). Refer all repairs to qualified service personnel. Electrical voltages inside the product can cause severe injury.
- Disconnect the USB cable and refer all repairs to qualified service personnel under the following conditions:
 - If smoke, strange odors or strange noises come from the product.
 - If liquid or foreign objects get inside the product.
 - If the product has been dropped or the housing has been damaged.Continuing to use the product under these conditions may result in fire or electric shock.

Caution

- Use a dry cloth for cleaning (or, for stubborn dirt or stains, a damp cloth that has been wrung dry). Do not use liquid, aerosol cleaners, or solvents such as alcohol, thinner, or benzine.
- Do not put anything that exceeds the weight of two Easy Interactive Pens in the pen tray.

Battery Precautions

Warning

- If liquid leaking from the batteries gets into your eyes, do not rub your eyes. Wash them immediately with clean water and consult a doctor.
- Do not leave the batteries or the Easy Interactive Pen inside a vehicle with the windows closed, in places where they will be exposed to direct sunlight, or in places that may become extremely hot. Thermal deformation or technical malfunction may occur, which could result in fire.
- Keep batteries out of the reach of children. Batteries are choking hazards and are very dangerous if swallowed.
- Insert batteries so that the polarities (+ and -) are correctly aligned, to avoid leakage, overheating, or explosion.
- If liquid from the battery enters your mouth, rinse immediately with plenty of water and consult a doctor.
- If liquid from the battery comes in contact with your skin or clothes, wash immediately with water. Battery liquid may cause skin damage.
- Do not mix old and new batteries, or batteries of different types. Doing so may cause leakage, overheating, or explosion.
- Replace batteries as soon as they run out. If a dead battery is left inside the pen for long periods, gas emitted from the battery may cause leakage, overheating, explosion, or damage to the device.
- Remove the batteries if you will not be using the pens for a long period of time.

Important Safety Instructions 2

Introduction

Product Features 8

Included Items 8

Parts Location 9

Interactive Unit 9

Easy Interactive Pen 9

Pen Tray 10

Getting Started

Installing the Software 12

Installing the Pen Batteries 13

Connecting the Cables 14

Connecting the VGA Computer Cable 14

Connecting the USB Cable for the Easy Interactive Pen 14

Using the Easy Interactive Pen

Calibrating 16

Checking the Connection Status 16

Performing Calibration 16

Using the Pen as a Mouse 18

Solving Problems

Problems and Solutions 20

Easy Interactive Pen Problems 20

Calibration Problems 20

Where to Get Help 21

Notices

Specifications 23

General 23

Dimensions 23

Long wall plate 23

Short wall plate 23

Electrical 24

Environmental 24

Easy Interactive Pen 24

System Requirements 24

FCC Compliance Statement 25

For United States Users 25

WARNING 25

For Canadian Users 25

Declaration of Conformity 26

Copyright Notice 27

Trademarks 27

Introduction

The Interactive Unit is a wall-mounted receiver that works with your projector to turn virtually any surface into an interactive whiteboard. You can use it with your existing ceiling-mounted projector and standard whiteboard. The Interactive Unit includes all the hardware and software you need to create interactive presentations using your computer and installed projector.

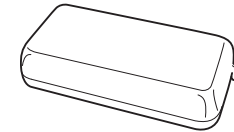
- Lightweight and easy to install
- Includes wall plates and mounting hardware
- Includes the Easy Interactive Driver software for using the pens with your computer
- Includes two battery-operated pens that work with most Windows and Macintosh computers



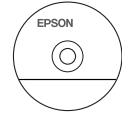
You can also download the optional Easy Interactive Tools from the Epson website at <http://www.epson.com>.



AAA Pen battery
(4 pieces)

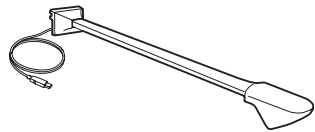


Pen tray

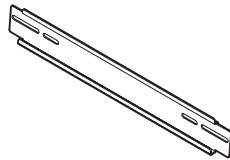


Easy Interactive Driver
CD

Included Items



Interactive Unit with USB
cable



Long wall plate



Short wall plate



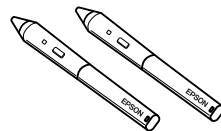
User's Guide CD



M5 x 25 mm Bolt
(2 pieces)

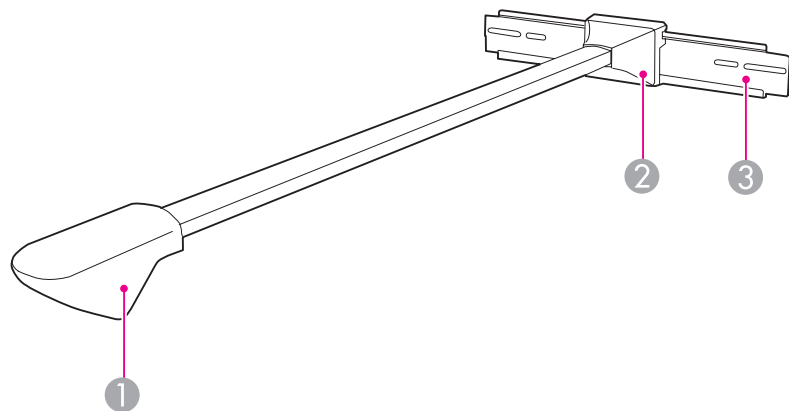


M5 Wrench



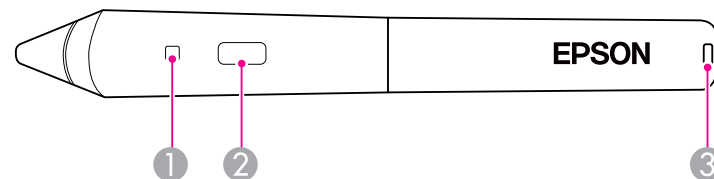
Easy Interactive Pen
(2 pieces)


Interactive Unit



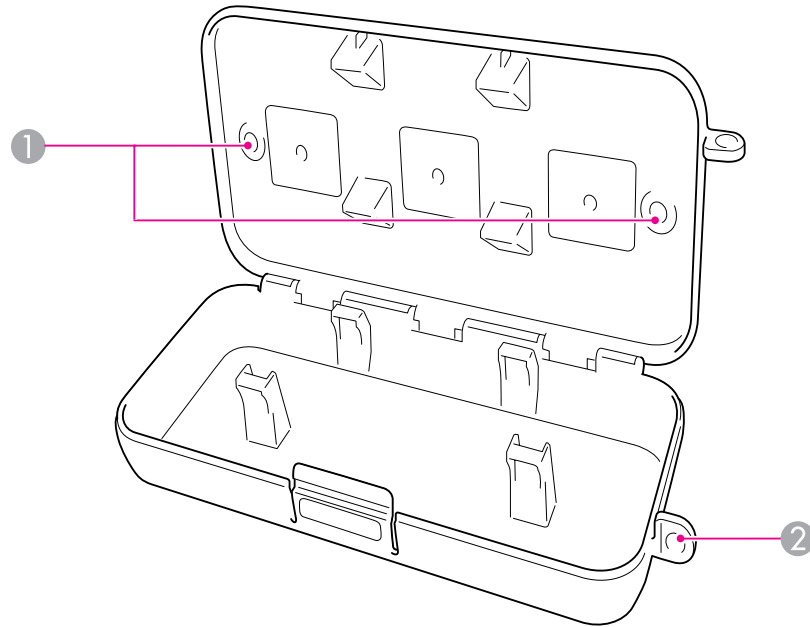
Name	Function
① Easy Interactive Function receiver	Receives signals from the Easy Interactive Pen.
② Wall plate cover	Covers the connection between the Interactive Unit and the wall plate.
③ Wall plate	Use this to mount the Interactive Unit. This illustration shows the long wall plate.

Easy Interactive Pen



Name	Function
① Battery indicator light	When you press the button, the light turns green if there is any remaining battery power. If it does not turn green, replace the batteries.  p.13
② Button	Functions as the right button of a mouse.
③ Cord attachment slot	You can attach a commercially available cord or strap.

Pen Tray



	Name	Function
①	Fixing points	Attach the pen tray to a whiteboard or wall.
②	Security hole	Pass a commercially available lock through here.



It is recommended that the pen tray be tightened with two commercially available M5 bolts.

Getting Started

Before you can use your Interactive Unit, you need to install the software and connect the cables to your computer.

This section explains how to install the software for the pens.

Even if you already have interactive whiteboard software, you must install the Easy Interactive Driver from the CD labeled "Epson Projector Software for Easy Interactive Function."

- 1 Insert the CD labeled "Epson Projector Software for Easy Interactive Function" in your computer.

Windows

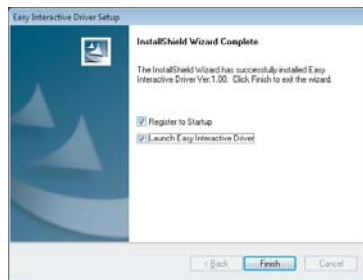
If you see the AutoPlay window, click **Run EIDriverVxxx_Setup.exe**.
If you see a User Account Control screen, click **Continue** or **Yes**.

Mac OS

Double-click **EIDriverVxxx_Setup** in the Epson window.

- 2 Select your language.
- 3 Follow the on-screen instructions to install the software.
- 4 When you see one of the following screens, select **Register to Startup** (Windows) or **Start up** (Mac OS) and **Launch Easy Interactive Driver**.

Windows



Mac OS




- 5 Click **Finish** (Windows) or **Continue** (Mac OS).

- 6 Follow the on-screen instructions to finish installing the software and start Easy Interactive Driver.

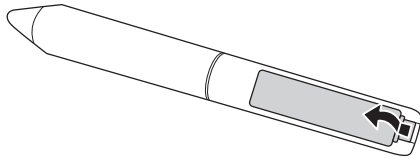


You can use any interactive whiteboard software, or download Easy Interactive Tools from the Epson website at <http://www.epson.com>.

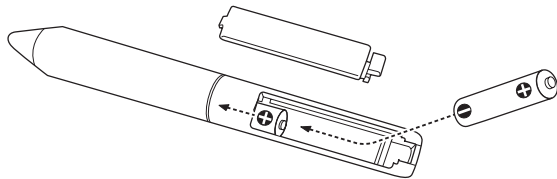
Before you can use the pen, you need to install the batteries. To check the batteries, press the button on the pen. If the indicator light is green, the batteries have enough power.  [p.9](#)

If you need to install or replace the batteries, use two alkaline AAA batteries.

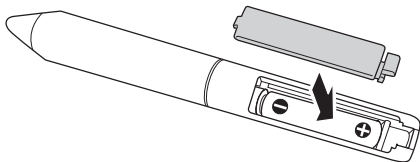
- 1** Press in the tab on the battery cover as you lift the cover off.

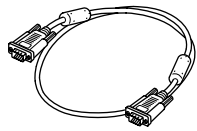


- 2** Install two batteries, inserting the + and - ends as shown.

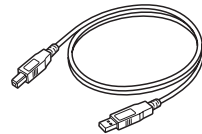


- 3** Replace the battery cover and press it down until it clicks into place.






VGA computer cable

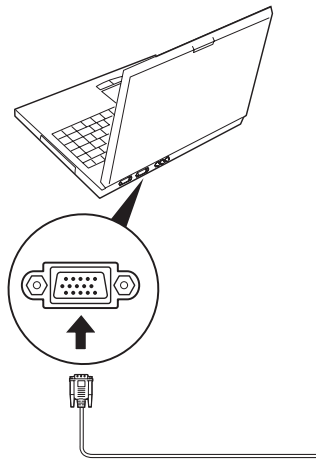


USB cable

First you need to make sure that your computer is connected to your projector using the VGA computer cable that came with the projector.


Connecting the VGA Computer Cable

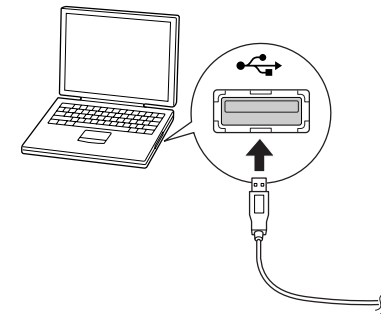
- 1 Locate the VGA computer cable connected to the projector.
- 2 Connect the other end of the cable to your computer's  monitor out port.



Connecting the USB Cable for the Easy Interactive Pen

In order to use the Easy Interactive Pen, you must connect the USB cable to the Interactive Unit and your computer.

- 1 Locate the USB cable connected to the Interactive Unit.
- 2 Connect the flat end of the cable to any available  USB port on your notebook or desktop computer.



Using the Easy Interactive Pen


The Easy Interactive Pen included with your Interactive Unit turn almost any wall or board into an interactive whiteboard. This chapter tells you how to calibrate your system and use the pens.

Calibration sets up the connection between your computer and the Easy Interactive Pen. This simple process ensures that your computer can accurately detect the position of the pen on the projection surface.

You need to calibrate before using the pen for the first time, or if you change the resolution on your computer or connect a different computer. You can use either pen for calibration.

Checking the Connection Status


Before you can calibrate, you need to make sure the Easy Interactive Driver is activated on your computer.

- 1 Make sure the  pen icon appears on your screen, either in the system tray on your taskbar in the lower right corner of your screen (Windows) or in the Dock (Mac OS). It may take a minute for the icon to appear after you turn on the computer and projector.

If a red × appears on the icon, the computer and projector are not connected correctly. Try removing and reconnecting the USB cable.


- 2 If you don't see the icon, do one of the following:

Windows

Select  or Start > All Programs or Programs > Epson Projector > Easy Interactive Driver.

Mac OS

Open the Application folder, then select the Easy Interactive Driver icon.

If you need more help,  [p.20](#).

When the Interactive Unit and projector are connected and the Easy Interactive Driver icon is displayed, you're ready to calibrate. See the next section for instructions.



Do not select **Exit** or **Quit** from the Easy Interactive Driver menu. If you do, you will have to open the driver as described above the next time you want to use the Easy Interactive Pen.

Performing Calibration


Two types of calibration are available:

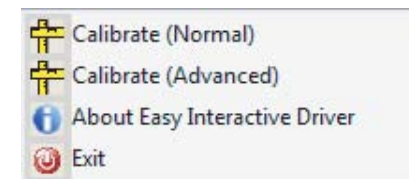
- Normal, which is faster and appropriate for most situations (25 calibration points)
- Advanced, which is recommended when you are projecting very detailed images and need higher accuracy (49 calibration points)

You may need to recalibrate if you change the projector's aspect ratio or if you change the following settings: Auto Setup, Resolution, Tracking, Sync, Position, Aspect, Keystone, or Zoom.


- 1 To start calibration, do one of the following:

Windows

Click the  pen icon in the system tray on your taskbar (lower right corner of your screen), then select **Calibrate (Normal)** or **Calibrate (Advanced)**.



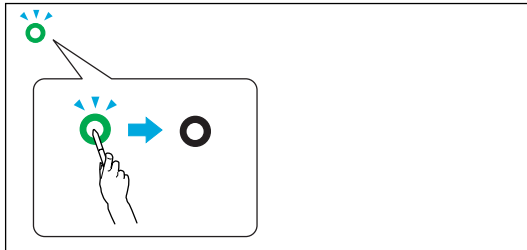
Mac OS

Click the  pen icon in the Dock, select **Calibrate** from the menu bar, then select **Calibrate (Normal)** or **Calibrate (Advanced)**.

- 2 After you read the message about calibration, click **OK**.

3 Wait until you see a flashing green circle in the upper left corner of your projected image.

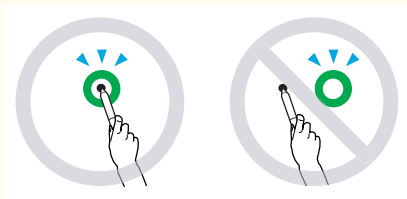
4 Touch the center of the circle with the tip of the pen.
The circle stops flashing and turns black. You see another circle on the right.



5 Touch the center of the next circle, then repeat. When you get to the end of the row, the next circle appears at the left edge of a new row.

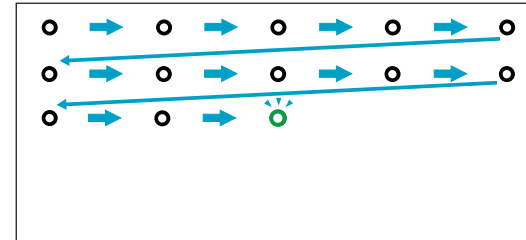



- For the most accurate calibration, make sure you hold the pen at an angle to the projection surface and touch the center of the circle.



- Make sure you are not blocking the signal between the pen and the interactive receiver.
- Don't press the button on the side of the pen while calibrating.
- If you make a mistake or want to stop calibrating, press [Esc] on your computer keyboard. Then restart the calibration process as described above.

6 Continue until all of the circles are black.



The Easy Interactive Driver allows you to use the pen as a mouse. If you installed interactive whiteboard software, you can also use the pens to write or draw on the projected image.  [p.9](#)

Press the button on the pen to test the batteries. If the indicator light is green, the batteries have enough power.


Follow these tips to use the pen as a mouse:

- For best performance, hold the pen at an angle (like a normal pen), rather than perpendicular to the board.
- To left-click, tap on the board.
- To double-click, tap twice.
- To right-click, tap while pressing the button on the pen.
- To click and drag, tap and drag with the pen.


Solving Problems

If you have a problem with your product, you can check the following section for troubleshooting information.

Easy Interactive Pen Problems


- Make sure the USB cable is securely connected to the Interactive Unit and computer. Try disconnecting and reconnecting the cable to your computer.
- If you don't see the  pen icon on your taskbar (Windows) or in the Dock (Mac OS), do one of the following:

Windows



Select  or Start > All Programs or Programs > EPSON Projector > Easy Interactive Driver.

Mac OS

Open the Application folder, then select the Easy Interactive Driver icon.

- If you see a red × on the pen icon, the computer and projector are not connected correctly. Try removing and reconnecting the USB cable.
- Make sure the pen batteries have enough power. If the light on the pen doesn't turn green when you press the button, you need to replace the batteries.
- Make sure you are not casting a shadow on the projection surface, and nothing is blocking the signal between the pen and the interactive receiver on the Interactive Unit.
- Dim the room lights and turn off any fluorescent lights. Make sure the projection surface and the pen receiver are not in direct sunlight or other sources of bright lighting.
- For easier operation, hold the pen at an angle to the projection surface.
- If the pen position is not accurate, you may need to recalibrate.
 [p.16](#)

Calibration Problems

- If the flashing circles don't appear when you try to calibrate, make sure the USB cable is securely connected to the computer.  [p.14](#)
Try restarting the Easy Interactive Driver.  [p.16](#)
- If the circles don't stop flashing and don't turn black (or they stop flashing and turn black automatically), dim or turn off any bright lights near the projection surface.

If you notice any problems or you think the Interactive Unit is broken, stop using it and contact your local dealer for further advice. Or visit <http://www.epson.com> to locate a support or service representative in your area.

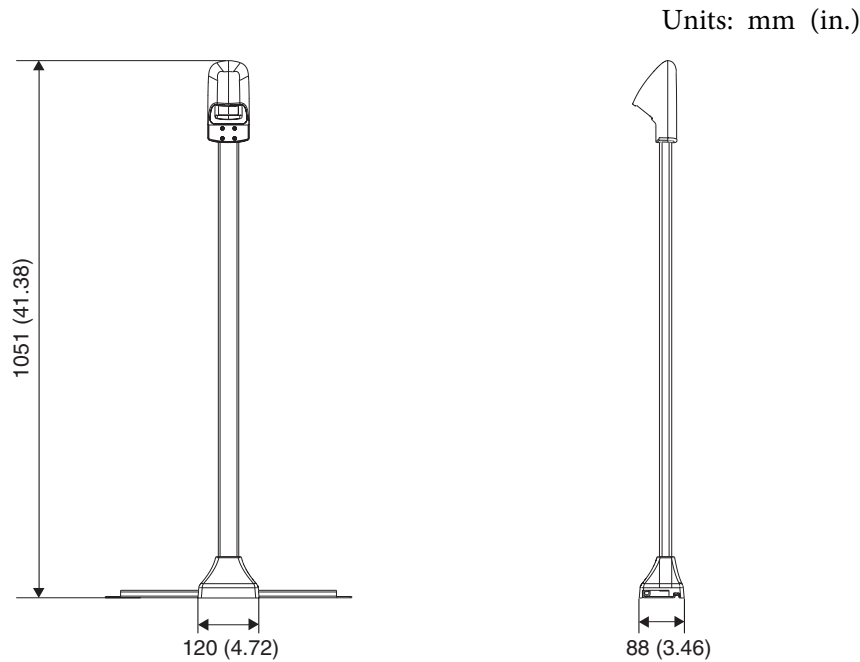
Check the website periodically for updates to the Easy Interactive Driver software.

Notices

General

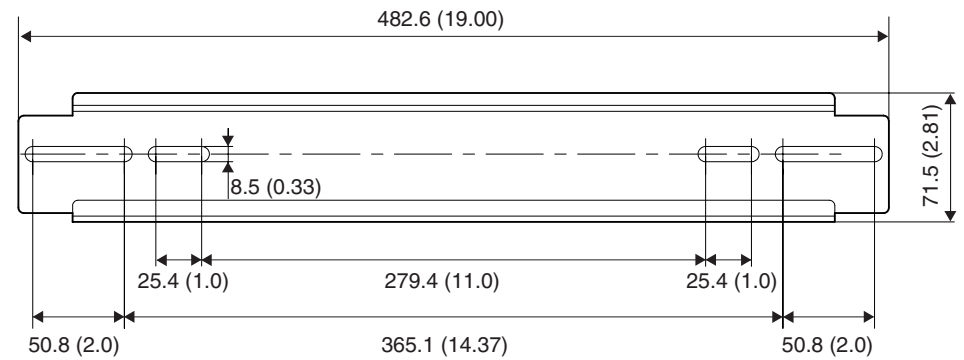
Image size	63 to 102 inches (4:3 XGA)
	60 to 96 inches (16:10 WXGA)
	58 to 93 inches (16:9 widescreen)
Weight	Approximately 2.3 kg (5.08 lb) with long wall plate Approximately 1.8 kg (3.97 lb) with short wall plate 1.45 kg (3.2 lb) without wall plate

Dimensions



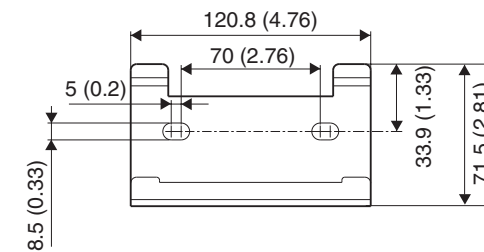
Long wall plate

Units: mm (in.)



Short wall plate

Units: mm (in.)



Electrical

Power supply voltage	5 V DC
Current consumption	180 mA

Environmental

Temperature	Operating: 5 to 35 °C (41 to 95 °F) (non-condensing)
	Storage: -10 to 60 °C (14 to 140 °F) (non-condensing)
Operating altitude	0 to 2286 m (0 to 7500 ft)

Easy Interactive Pen

Power consumption	57 mA
Voltage	3 V DC
Batteries	AAA x 2, Alkaline
Size	168 mm (6.61 in.), diameter 21 mm (0.83 in.)
Weight	33 g (1.16 oz)

System Requirements

Windows	Windows 2000 Service Pack 4 or later Windows XP Service Pack 2 or later (Home Edition/Professional) Windows Vista 32-bit versions only (All editions except for Starter) Windows 7 32-bit versions only
---------	--

Mac OS

Easy Interactive Function

Mac OS X 10.3 to 10.6

Easy Interactive Tools

Mac OS X 10.4 to 10.6

For United States Users

This equipment has been tested and found to comply with the limits for a Class B digital device, pursuant to Part 15 of the FCC Rules. These limits are designed to provide reasonable protection against harmful interference in a residential installation. This equipment generates, uses, and can radiate radio frequency energy and, if not installed and used in accordance with the instructions, may cause harmful interference to radio or television reception. However, there is no guarantee that interference will not occur in a particular installation. If this equipment does cause interference to radio and television reception, which can be determined by turning the equipment off and on, the user is encouraged to try to correct the interference by one or more of the following measures:

- Reorient or relocate the receiving antenna.
- Increase the separation between the equipment and receiver.
- Connect the equipment into an outlet on a circuit different from that to which the receiver is connected.
- Consult the dealer or an experienced radio/TV technician for help.

WARNING

The connection of a non-shielded equipment interface cable to this equipment will invalidate the FCC Certification of this device and may cause interference levels which exceed the limits established by the FCC for this equipment. It is the responsibility of the user to obtain and use a shielded equipment interface cable with this device. If this equipment has more than one interface connector, do not leave cables connected to unused interfaces. Changes or modifications not expressly approved by the manufacturer could void the user's authority to operate the equipment.

For Canadian Users

This Class B digital apparatus complies with Canadian ICES-003.

Cet appareil numérique de la classe B est conforme à la norme NMB-003 du Canada.

Since the Easy Interactive Pen is so small, FCC Statement for Verification is written in the manual.

FCC Statement for Verification

This device complies with Part 15 of the FCC Rules. Operation is subject to the following two conditions: (1) this device may not cause harmful interference, and (2) this device must accept any interference received, including interference that may cause undesired operation.

According to 47CFR, Part 2 and 15 for: Class B Personal Computers and Peripherals; and/or CPU Boards and Power Supplies used with Class B Personal Computers:

We: Epson America, Inc.
Located at: MS 3-13
3840 Kilroy Airport Way
Long Beach, CA 90806
Telephone: (562) 290-5254

Declare under sole responsibility that the product identified herein, complies with 47CFR Part 2 and 15 of the FCC rules as a Class B digital device. Each product marketed is identical to the representative unit tested and found to be compliant with the standards. Records maintained continue to reflect the equipment being produced can be expected to be within the variation accepted, due to quantity production and testing on a statistical basis as required by 47CFR §2.909. Operation is subject to the following two conditions: (1) this device may not cause harmful interference, and (2) this device must accept any interference received, including interference that may cause undesired operation.

Trade Name: Epson
Type of Product: Interactive Unit
Model: ELPIU01

All rights reserved. No part of this publication may be reproduced, stored in a retrieval system, or transmitted in any form or by any means, electronic, mechanical, photocopying, recording, or otherwise, without the prior written permission of Seiko Epson Corporation. No patent liability is assumed with respect to the use of the information contained herein. Neither is any liability assumed for damages resulting from the use of the information contained herein.

Neither Seiko Epson Corporation nor its affiliates shall be liable to the purchaser of this product or third parties for damages, losses, costs, or expenses incurred by the purchaser or third parties as a result of: accident, misuse, or abuse of this product or unauthorized modifications, repairs, or alterations to this product, or (excluding the U.S.) failure to strictly comply with Seiko Epson Corporation's operating and maintenance instructions.

Seiko Epson Corporation shall not be liable against any damages or problems arising from the use of any options or any consumable products other than those designated as Original Epson Products or Epson Approved Products by Seiko Epson Corporation.

The contents of this guide may be changed or updated without further notice.

Illustrations in this guide and the actual projector may differ.

Trademarks

Macintosh, Mac, and Mac OS are registered trademarks of Apple Inc.

Microsoft, Windows, Windows Vista, Windows 7, and the Windows logo are trademarks or registered trademarks of Microsoft Corporation in the United States and/or other countries.

General Notice: Other product names used herein are for identification purposes only and may be trademarks of their respective owners. Epson disclaims any and all rights in those marks.

© SEIKO EPSON CORPORATION 2010. All rights reserved.