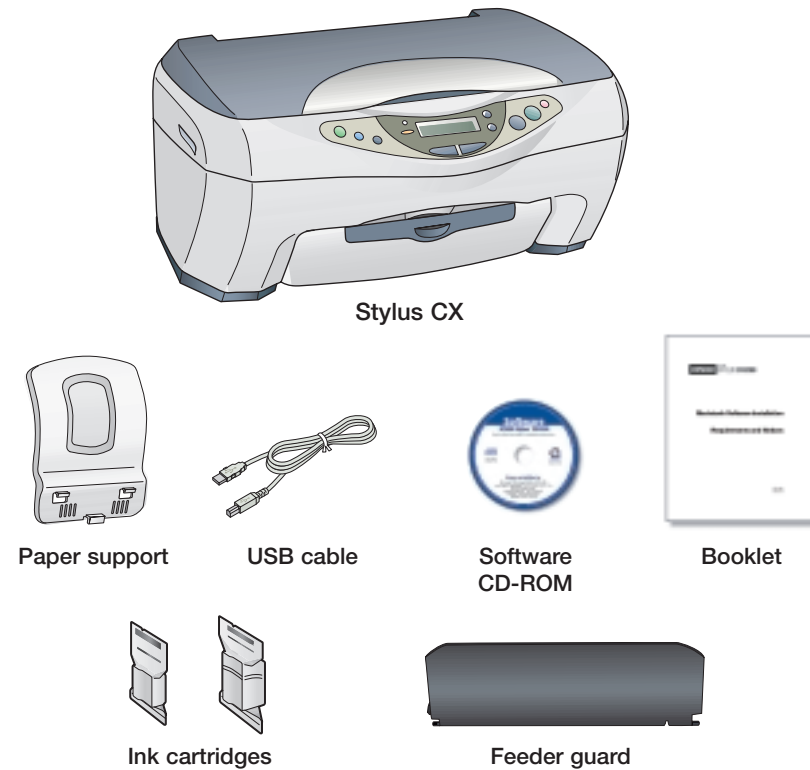


Start Here

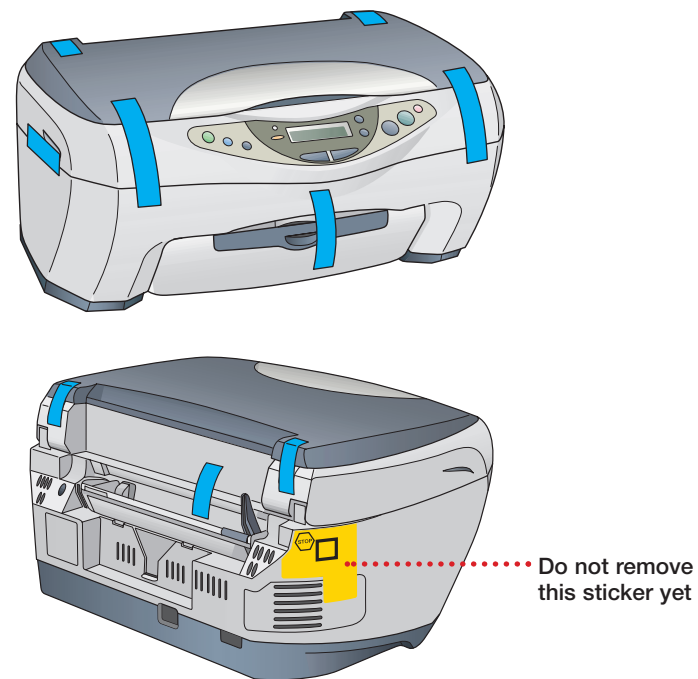
EPSON Stylus® CX3200

1 Unpack

- 1 Make sure you have all the parts shown here. If any parts are missing, contact EPSON as described on the back of this sheet.



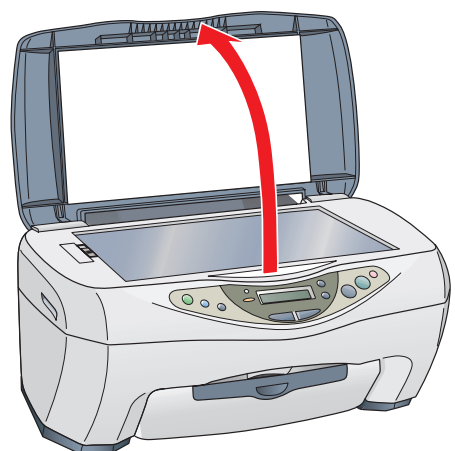
- 2 Remove any tape and packing materials, as shown.



Note: There may be additional packing materials or tape in locations different from the ones shown here. Do not remove the sticker covering the USB port yet.

2 Unlock

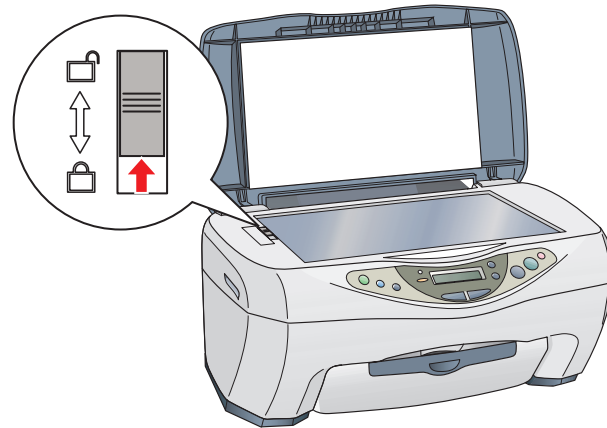
- 1 Open the scanner lid, as shown. Remove any packing materials under the lid.



continue

continued

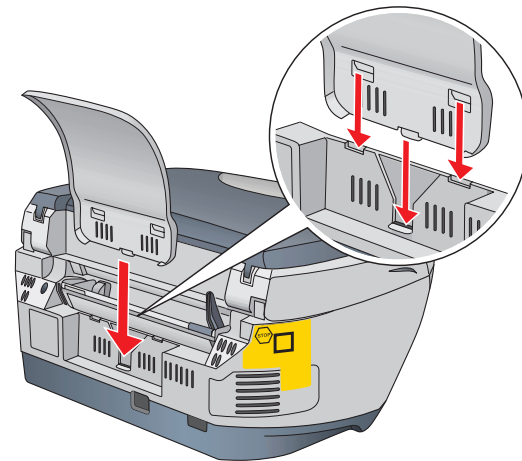
- 2 Slide the transportation lock back to the unlock position.



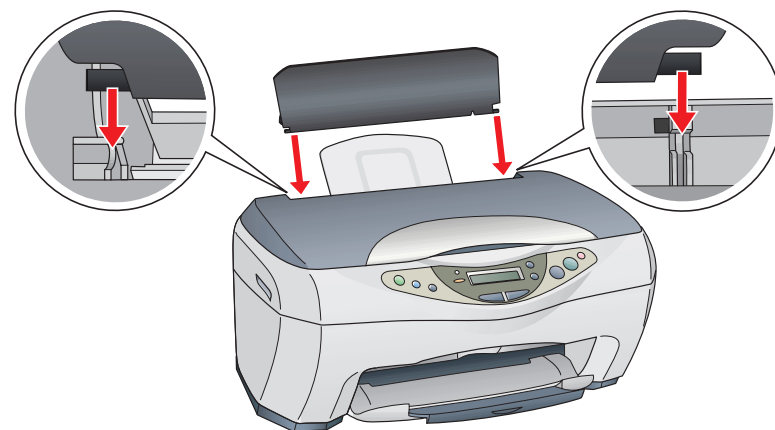
- 3 Close the scanner lid.

3 Attach the Parts

- 1 Insert the paper support into its three slots.

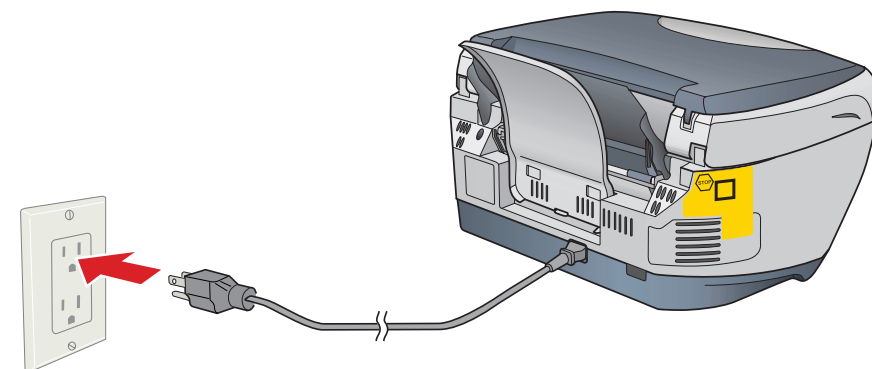


- 2 Snap the feeder guard into its two slots in the sheet feeder.



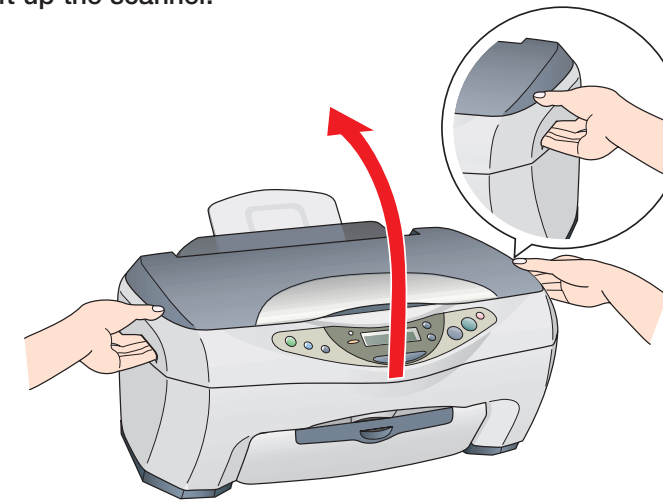
4 Plug In

Plug the Stylus CX into a grounded electrical outlet. Do not connect the USB cable yet.

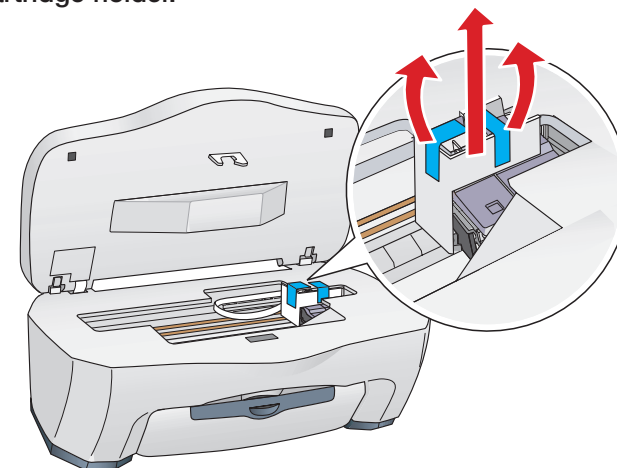


5 Install Ink Cartridges

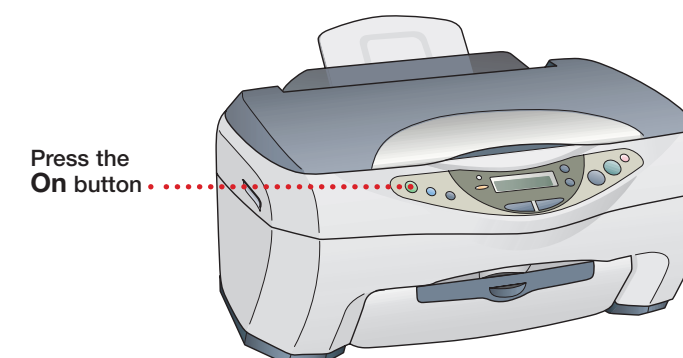
- 1 Lift up the scanner.



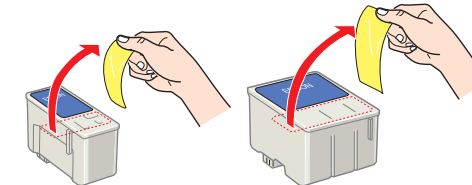
- 2 Peel off the tape and remove the plastic piece from the ink cartridge holder.



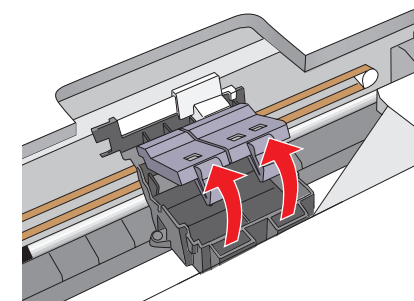
- 3 Press and hold the On button for 2 seconds. The green light flashes and the scanner carriage and print head move.



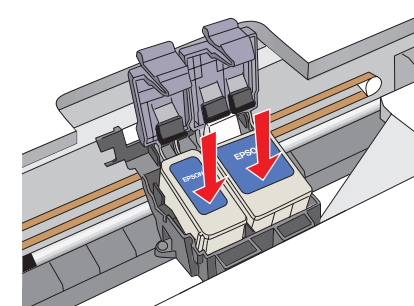
- 4 Unwrap the ink cartridges and remove the yellow tape.



- 5 Lift up the ink cartridge clamps.



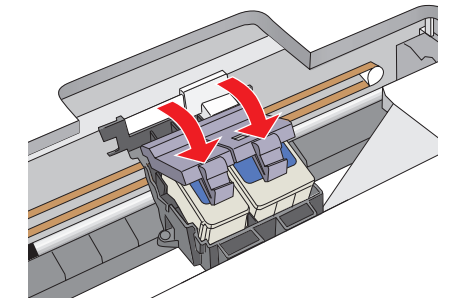
- 6 Insert the ink cartridges with the labels face-up.



continue

continued

- 7 Press down the ink cartridge clamps until they snap shut.



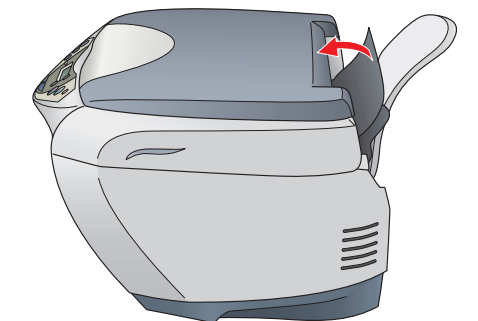
- 8 Carefully lower the scanner back down into place. The Stylus CX begins charging the ink delivery system.

Charging takes about 1 1/2 minutes. The green light flashes and the Stylus CX makes various sounds. Don't turn it off while the green light is flashing or you'll waste ink.

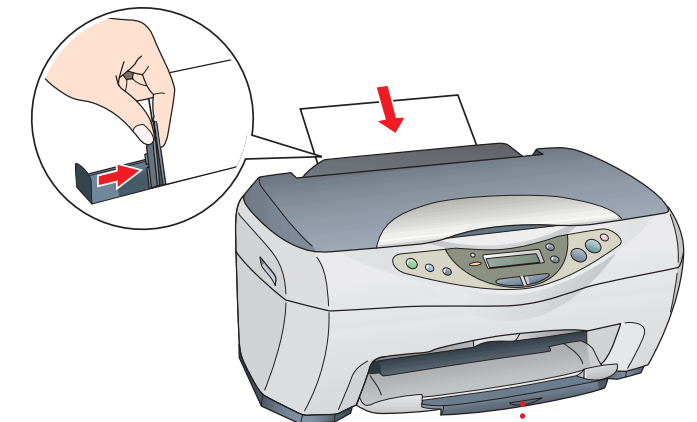
Caution: You must install both cartridges and leave them installed for all types of printing. To avoid damaging the Stylus CX, never move the print head by hand.

6 Load Paper

- 1 Flip the feeder guard forward.



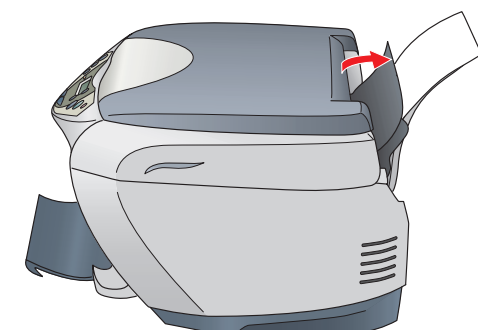
- 2 Place a stack of paper against the right side of the feeder, beneath the tab. Pinch the left edge guide and slide it against the paper.



Open the output tray and pull out the extension

Caution: Make sure you load paper behind the feeder guard.

- 3 Flip the feeder guard back over the stack of paper.



- 4 Position the Stylus CX so the front is at least 9 inches from the edge of the table.

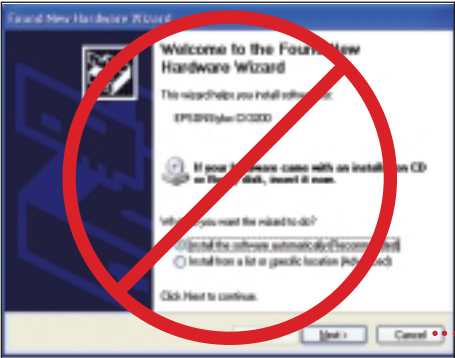
Turn over.....

Install Software

For Macintosh® installation instructions, see the booklet that came with your Stylus CX. Follow the steps below to install software for Windows.®

- 1 Make sure the Stylus CX is **not** connected to your computer, then turn on your computer.

Note: If your Stylus CX is turned on and connected to your computer, you may see several New Hardware Wizard screens. Click **Cancel** for each of these screens and disconnect your Stylus CX. You can't install your software that way.



Click **Cancel**

- 2 Insert your Stylus CX CD-ROM in your CD-ROM or DVD drive. The Software Installation screen opens automatically.

- 3 Click **Install**.



Click **Install**

Note: If the install screen doesn't open automatically, do the following: for Windows XP: click **Start > My Computer**. Then double-click the EPSON CD-ROM icon.

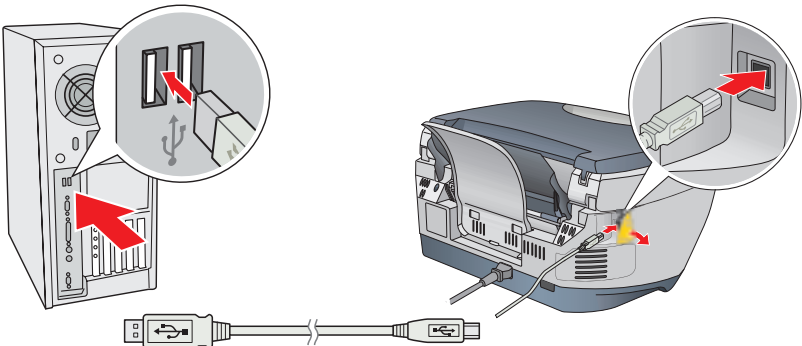
For Windows 2000/Me/98: double-click **My Computer**. Then double-click the EPSON CD-ROM icon.

- 4 When you see the license agreement, read it and click **Agree**. Then follow the instructions on the screen to install the drivers.

- 5 When you see this screen telling you to connect your Stylus CX, make sure it is turned on, then remove the sticker from the USB port on the back.



- 6 Connect the square end of the USB cable to your Stylus CX USB port, then connect the flat end of the cable to any available USB port on your computer.



After you connect your Stylus CX, Windows displays several messages as it detects your device.

- 7 Continue following the instructions on the screen to install the rest of your software.

It will take several minutes to install the remaining software. Don't cancel the installation.

continue

continued

- 8 If you see a message about installing QuickTime®, click **Yes** and follow the on-screen instructions. You don't need a registration number.

- 9 When you see the final screen, make sure the Stylus CX is still on and paper is loaded. Click **Print Test Page**.



Click to print a test page

Note: If the test page doesn't print, see the **Solving Problems** section.

- 10 Click **Register** and follow the instructions on the screen to register your product. At the last screen, click **Done**.

- 11 Click **Exit**, then remove the CD-ROM.

Now you're ready to copy, scan, and print. See the next section or your on-screen *EPSON User's Guide* for instructions.

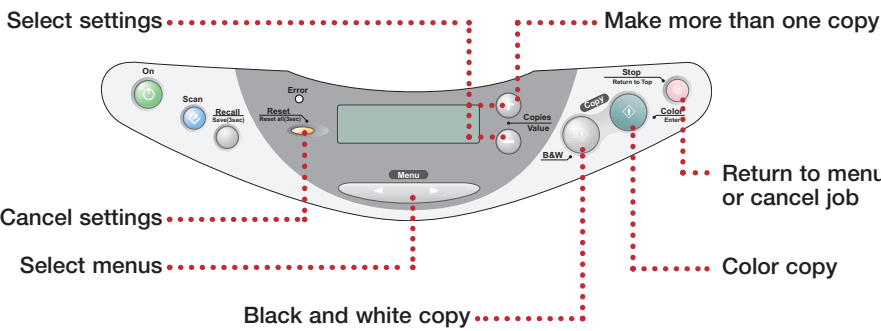
How to Copy

- 1 Open the scanner lid.
- 2 Place your document or photo face-down on the glass, in the corner shown below. Move your document about 0.1 inch from the top and side edge so your entire document is scanned.



- 3 Close the scanner lid.

- 4 Use the Control Panel to select settings:

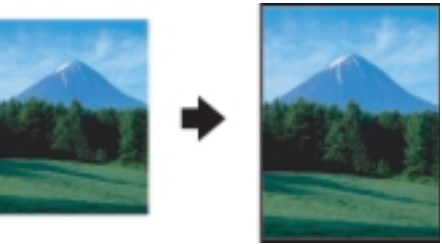


- To make the copy lighter or darker, press the right **Menu** button until you see **Lighter/Darker** on the control panel screen. Then press the + or - **Value** button to choose from the 5 settings. Press **Stop**.
- To enlarge or reduce a photo, press the right **Menu** button until you see **Zoom In/Out** on the control panel screen. Then press the + or - **Value** button to display the proportion you want. Press **Stop**.

- 5 Press the **Color Copy** button (for color copies) or **B&W Copy** button (for black and white copies). Your document or photo is scanned and printed.

Using the Control Panel

- You can copy on EPSON Glossy Photo Paper or Premium Glossy Photo Paper in 4 x 6 or 5 x 7 sizes. Press the right **Menu** button to display **Quality&Paper** or **Paper** size. Then press the - **Value** button to select the settings you want. Press **Stop** after each setting.

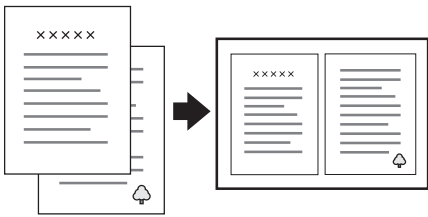


- You can make borderless copies of photos. Press the right **Menu** button to display **Copy** mode. Then press the - **Value** button to select **Border Free**.



- You can make multiple wallet-size copies on one sheet of plain paper. Press the right **Menu** button to display **Copy** mode. Then press the - **Value** button to select **Repeat**.

- You can copy two pages onto one page. Press the right **Menu** button to display **Copy** mode. Then press the - **Value** button to select **2-up**. Place the first page on the glass and press one of the **Copy** buttons. When you see the message, remove the first page and place the second page on the glass. Then press the **Copy** button again.



- You can also use the Control Panel to run maintenance programs and see how much ink you have left. Press the right **Menu** button to display **Head Alignment**, **Nozzle Check**, **Head Cleaning**, **Change Cartridge**, or **Ink Levels**.

For more information about using the control panel or printing and scanning from your computer, double-click the **EPSON User's Guide** icon on your desktop.

Solving Problems

If the red **Error** light is on, check the message on the control panel. If your problem is listed here, try these suggestions. For more information, see your software **Help** or your on-screen *EPSON User's Guide*.

The Found New Hardware Wizard appears on your screen.

Click **Cancel** and follow the steps in section 7. Disconnect the Stylus CX before installing the software.

You see an error message when you try to print or scan.

Make sure your Stylus CX is connected to your computer, plugged into a power source, and turned on.

The Stylus CX doesn't work.

Slide back the transportation lock under the lid to unlock the scanner. See section 2.

Make sure you're using the USB cable that came with your Stylus CX.

Make sure your EPSON Stylus CX3200 software is installed correctly.

Make sure you insert paper behind the feeder guard, not in front of it.

Any Questions?

Here's where to look for answers:

On-screen User's Guide

Double-click the **EPSON User's Guide** icon on your desktop.

On-screen Help for EPSON Smart Panel™, ArcSoft™ PhotoImpression™, EPSON Software™ Film Factory™, and EPSON TWAIN

Click the **Help** button or question mark that appears on the screen when you're using any of these programs. For Film Factory, you can also go to **Start > Programs (or All Programs) > Film Factory > Getting Started Guide**.

EPSON Technical Support

EPSON provides technical assistance 24 hours a day through the services described below:

World Wide Web
<http://support.epson.com>

Automated Telephone Services
To use these services, you must have a touch tone telephone and call (800) 922-8911. Your EPSON SoundAdvice™ Express Code is 70420. Use this code to quickly select your product in SoundAdvice.

To Speak to a Technical Support Representative
Dial (562) 276-4382 (U.S.) or (905) 709-3839 (Canada), 6 AM to 6 PM, Pacific Time, Monday through Friday. Toll or long distance charges may apply.

Software Technical Support

Software	Telephone	Fax	Internet and E-mail
EPSON Smart Panel	(510) 445-8616	(510) 445-8601	tech@newssoftinc.com
ArcSoft PhotoImpression	(510) 440-9901 8:30 AM to 5:30 PM, PST Monday-Friday	(510) 440-1270	www.arcsoft.com support@arcsoft.com

How to Get Paper and Ink

For the best prints and copies, use genuine EPSON ink and paper. You can buy them from your local store or from the EPSON Store™ at (800) 873-7766 or www.epsonstore.com (U.S. sales only).

Look for these cartridges and paper:



T040120
Black Ink Cartridge



T041020
Color Ink Cartridge



Photo Quality Ink Jet Paper
Bright white paper perfect for newsletters, proposals, and presentations.



Glossy Photo Paper
Heavier weight paper for enlargements and borderless 4 x 6 prints.



Premium Glossy Photo Paper
Highest quality paper for borderless prints in frame-ready sizes.