

Epson Stylus® CX4100 Series/ Epson Stylus® CX4700 Series



Quick Guide

*Basic Copying, Printing, and Scanning
Maintaining Your Epson Stylus CX All-in-One
Solving Problems*

Copyright Notice

All rights reserved. No part of this publication may be reproduced, stored in a retrieval system, or transmitted in any form or by any means, electronic, mechanical, photocopying, recording, or otherwise, without the prior written permission of Seiko Epson Corporation. The information contained herein is designed only for use with this Epson product. Epson is not responsible for any use of this information as applied to other equipment.

Neither Seiko Epson Corporation nor its affiliates shall be liable to the purchaser of this product or third parties for damages, losses, costs, or expenses incurred by purchaser or third parties as a result of: accident, misuse, or abuse of this product or unauthorized modifications, repairs, or alterations to this product, or (excluding the U.S.) failure to strictly comply with Seiko Epson Corporation's operating and maintenance instructions.

Seiko Epson Corporation shall not be liable for any damages or problems arising from the use of any options or any consumable products other than those designated as Original Epson Products or Epson Approved Products by Seiko Epson Corporation.

Responsible Use of Copyrighted Materials

Digital cameras, scanners, and ink jet printers, like conventional photocopiers and cameras, can be misused by improper copying or printing of copyrighted material. While some countries' laws permit limited copying of copyrighted material in certain circumstances, those circumstances may not be as broad as some people assume. Epson encourages each user to be responsible and respectful of the copyright laws when using digital cameras, scanners, and ink jet printers.

Trademarks

Epson and Epson Stylus are registered trademarks and Exceed Your Vision is a trademark of Seiko Epson Corporation.

DURABrite is a registered trademark and Micro Step Drive is a trademark of Epson America, Inc.

USB DIRECT-PRINT™ and the USB DIRECT-PRINT logo are trademarks of Seiko Epson Corporation. Copyright © 2002 Seiko Epson Corporation. All rights reserved.

DPOF™ is a trademark of CANON INC., Eastman Kodak Company, Fuji Photo Film Co., Ltd. and Matsushita Electric Industrial Co., Ltd.



SD™ is a trademark.

Memory Stick, Memory Stick Duo, Memory Stick PRO, and Memory Stick PRO Duo are trademarks of Sony Corporation.



xD-Picture Card™ is a trademark of Fuji Photo Film Co., Ltd.

General Notice: Other product names used herein are for identification purposes only and may be trademarks of their respective owners. Epson disclaims any and all rights in those marks.

© 2005 Epson America, Inc. 5/05

Contents

Introduction	5
Loading Paper	6
Copying a Photo or Document	8
Placing the Original on the Glass	8
Copying	9
Printing From a Memory Card (Epson Stylus CX4700 Only)	13
Compatible Cards and Image Formats	14
Inserting the Card	15
Printing an Index Sheet to Select Photos	16
Printing All Photos or DPOF Photos	18
Printing From a Digital Camera	19
Printing From Your Computer	20
Printing in Windows	20
Printing With Macintosh OS X	23
Using Special Papers	26
Scanning a Photo or Document	27
Basic Scanning	27
Restoring Color in Faded Photos	29
Maintaining Your Epson Stylus CX All-in-One	30
Checking the Print Head Nozzles and Ink	30
Cleaning the Print Head	31
Replacing Ink Cartridges	32
Solving Problems	36
Error Indicators	36
Problems and Solutions	38
Where To Get Help	40

Notices	41
System Requirements	41
Important Safety Instructions	42
Specifications	43
ENERGY STAR Compliance	45
Limited Warranty	47

Introduction

After you have set up your Epson Stylus® CX4100 Series or Epson Stylus® CX4700 Series all-in-one as described on the *Start Here* sheet, turn here to:

- Load paper
- Make a quick copy of a document or photo
- Print photos stored on a memory card (Stylus CX4700 only)
- Print photos directly from your camera (both the Stylus CX4100 and Stylus CX4700)
- Get the basic steps for printing from your computer
- Start scanning a document or photo, including restoring a color photo as you scan
- Perform routine maintenance
- Solve simple problems

This book tells you how to do most of these things without ever turning on your computer! Of course your Epson Stylus CX can do lots more when you connect it to your Windows® or Macintosh® computer. For additional instructions, see the on-screen *User's Guide* by selecting the icon for it on your desktop.

Please follow these guidelines as you read your Epson Stylus CX instructions:

Warning: Warnings must be followed carefully to avoid bodily injury.

Caution: Cautions must be observed to avoid damage to your equipment.

Note: Notes contain important information about your Epson Stylus CX.

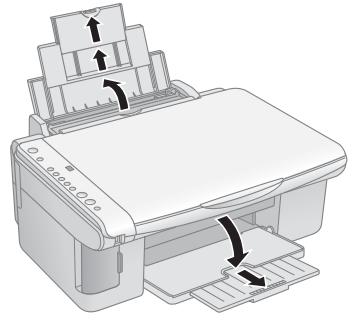
Tip: Tips contain hints for better copying, scanning, and printing.

Note: The illustrations in this guide show the Epson Stylus CX4700 Series all-in-one and its software, but the instructions are the same for the Epson Stylus CX4100 Series all-in-one except where noted.

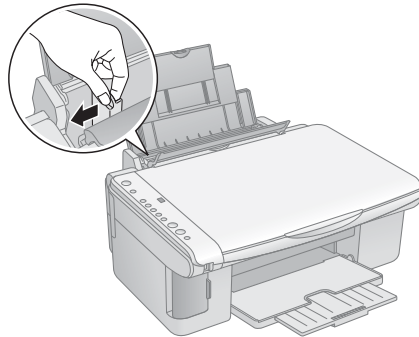
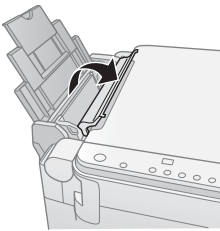
Loading Paper

Follow the steps here to load paper in your Epson Stylus CX all-in-one.

1. Open the paper support and output tray, then slide out the extensions.

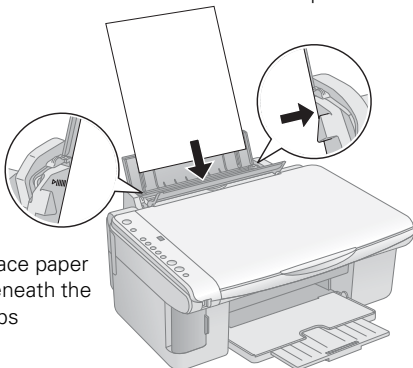


2. Flip the feeder guard forward. Then slide the left edge guide to the left.



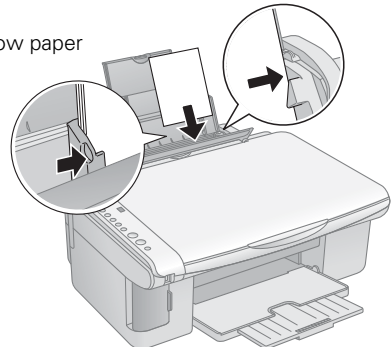
3. Insert the paper, printable side up, against the right edge guide. Always load it short edge first, even for landscape printing.

The printable side is often whiter or brighter than the other side.



Place paper beneath the tabs

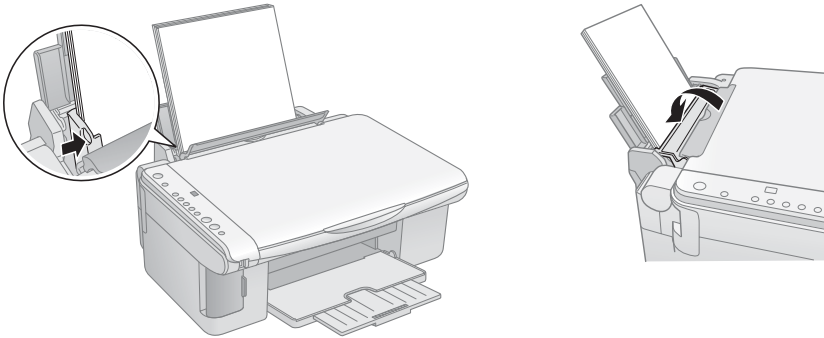
Narrow paper



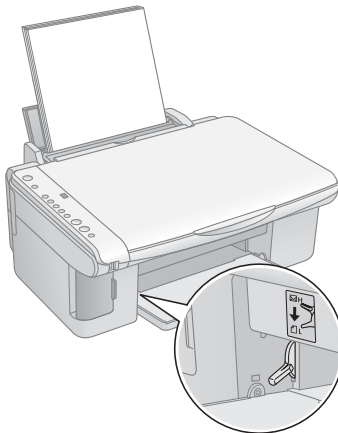
You can load up to 100 sheets of plain paper and up to 20 sheets of photo paper. (See the *User's Guide* for capacity guidelines on other paper types.)

Note: The type of paper you choose affects the way your printout looks, so be sure to select the correct paper for your job. If you are just making a copy or printing a rough draft of an image, plain paper is fine. However, for the best results, you'll want to use one of Epson's special ink jet papers designed for your printer. For example, your photos will look great printed on Epson® Premium Glossy Photo Paper. See page 26 for more information.

- Slide the left edge guide against the left edge of the paper (but not too tightly). Then flip the feeder guard back.



- Make sure the paper thickness lever is set down to the L position.



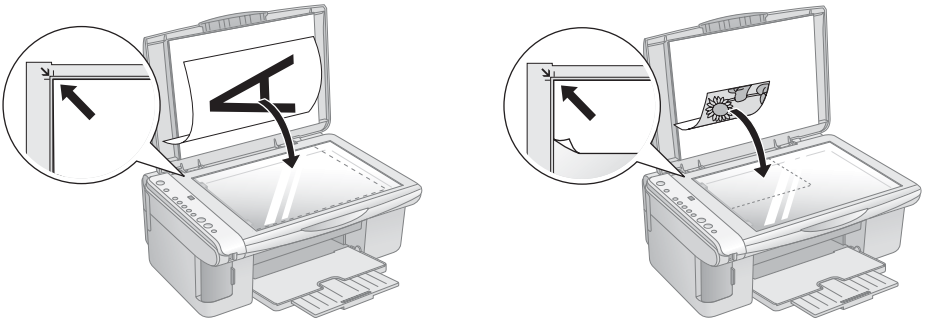
Copying a Photo or Document

Follow the instructions in this section to:

- Position your photo or document correctly on the glass (see below)
- Make copies of a photo or document (on page 9)

Placing the Original on the Glass

1. Open the document cover and place your original face-down on the glass, in the upper left corner. Move your original about 1 mm (0.04 in.) away from the top and left edges so all of it will be copied.



Move the original about 1 mm (0.04 in.) away from the top and left edges to avoid cropping

2. Close the cover gently so you don't move the original.

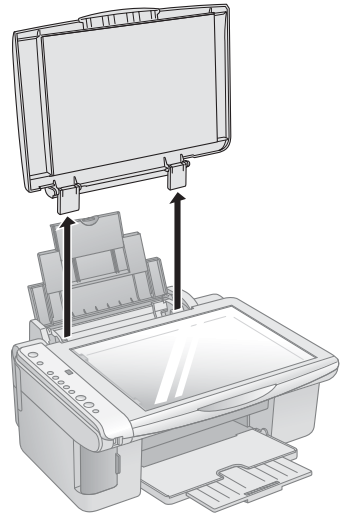
Caution: Never open the document cover beyond where it stops and do not place heavy objects on top of the Epson Stylus CX all-in-one.

If you need to copy or scan a thick or large document, you can remove the document cover. Just open it and pull it straight up.

If you need to press the document flat while you copy or scan it, do not press too hard and be careful not to move it.

Caution: Do not use excessive force on the document cover, and do not twist it. You may damage the document cover.

When you are done, replace the document cover by inserting the tabs back into the slots.



Copying

You can make copies using either letter (8.5 × 11 in. [216 × 279 mm]) plain paper or A4-size, or 4 × 6-inch (102 × 152 mm), or 5 × 7-inch (127 × 178 mm) photo paper.


Copying a Document


1. Make sure the Epson Stylus CX is turned on.
2. Place the document on the glass as described on page 8. Be sure to close the document cover.
3. Load up to 100 sheets of letter-size plain paper. (See page 6 if you need instructions.)




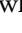
4. Press the **Copy** button until you see the desired number of copies in the **Copy** window. You can select up to 9 copies at a time this way.

To make more than 9 copies, see page 11.

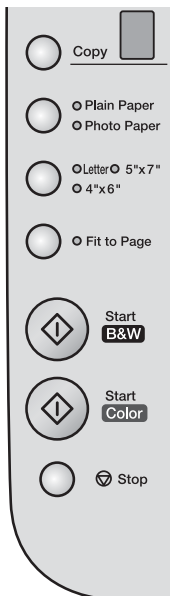
5. Press the paper type button to select **Plain Paper**. The light indicates which type is selected.
6. Press the paper size button to select **Letter**.
7. If you want your copies automatically reduced or enlarged to fit the loaded paper size, press the **Fit to Page** button.
8. To make a color copy, press the  **Start Color** button.

To make a black and white copy, press the  **Start B&W** button.

The  **On** light flashes and after a moment the Epson Stylus CX starts printing.

If you need to stop copying at any time, just press the  **Stop** button. Do not pull out paper that is being printed; it will be ejected automatically to the output tray.

Note: The copies may not be exactly the same size as the original.



Copying a Photo

1. Make sure the Epson Stylus CX is turned on.
2. Place the photo on the glass as described on page 8. Be sure to close the document cover.
3. Load up to 20 sheets of letter-size, 4 × 6-inch (102 × 152 mm), or 5 × 7-inch (127 × 178 mm) photo paper. (See page 6 if you need instructions.)



4. Press the **Copy** button until you see the correct number of copies in the **Copy** window. You can select up to 9 copies at a time this way.

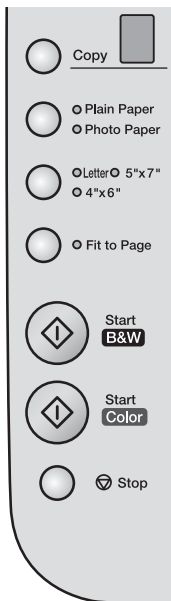
To make more than 9 copies, see page 11.

5. Press the paper type button to select **Photo Paper**.
6. Press the paper size button to select **Letter, 4" × 6"** (102 × 152 mm), or **5" × 7"** (127 × 178 mm).
7. If you want borderless photos (printed without a white border), press the **Fit to Page** button. Otherwise, photos are printed with a 1.5 mm (0.06-in.) border.
8. To make a color copy, press the **Start Color** button.
To make a black and white copy, press the **Start B&W** button.

The **On** light flashes and after a moment the Epson Stylus CX starts printing.

If you need to stop copying at any time, just press the **Stop** button. Do not pull out paper that is being printed; it will be ejected automatically to the output tray.


Note: The copies may not be exactly the same size as the original.





Making 10 or More Copies

1. Make sure the Epson Stylus CX is turned on.
2. Place the photo on the glass as described on page 8. Be sure to close the document cover.
3. Press the **Copy** button until you see “–” in the **Copy** window. This tells the Epson Stylus CX to print up to 100 copies.
4. Load enough paper for the number of copies (up to 100) you want to make. For example, to print 12 copies, load 12 sheets of paper.
5. Press the paper type button to select **Plain Paper** or **Photo Paper**.
6. Press the paper size button to select **Letter** (8.5 × 11 in. [216 × 279 mm]), **4" × 6"** (102 × 152 mm), or **5" × 7"** (127 × 178 mm).

7. Press the  **Start Color** or  **Start B&W** button.

The Epson Stylus CX makes copies until it runs out of paper. Then the red  **Error** light comes on.


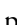


8. To make more copies, load more paper and press the  **Start Color** or  **Start B&W** button to resume.

If you don't need any more copies, press the  **Stop** button.

Note: When making a lot of copies, it is a good idea to remove the printed copies from the output tray after every 10 sheets or so.

Speeding Up Printing

If you want to make a copy quickly and do not need high quality, you can print a “draft” copy. The print quality is reduced, but the copy is printed faster.

1. Load plain, letter-size paper and select **Plain Paper** and **Letter** size on the control panel.
2. When you are ready to copy, press and hold down the  **Stop** button, then press the  **Start Color** button (to copy in color) or the  **Start B&W** button (to copy in black and white). When the  **On** light starts flashing, release both buttons.

Printing From a Memory Card (Epson Stylus CX4700 Only)

The Epson Stylus CX4700 all-in-one lets you print color photos directly from your digital camera's memory card; just insert it into a memory card slot on the Epson Stylus CX4700 and you're ready to print.

If your digital camera supports DPOF™ (Digital Print Order Format), you can pre-select the photos you want to print while the card is still in the camera. Then, when you insert the card in the Epson Stylus CX4700, it knows which photos to print and how many copies of each.

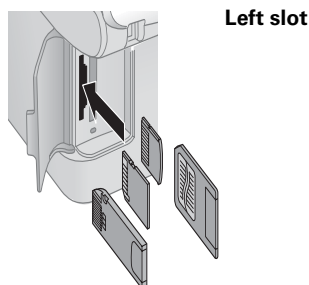
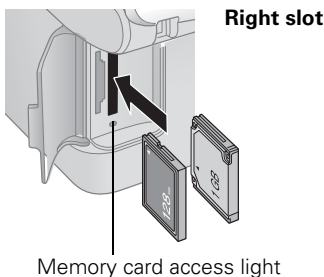
See these sections:

- “Compatible Cards and Image Formats” on page 14
- “Inserting the Card” on page 15
- “Printing an Index Sheet to Select Photos” on page 16
- “Printing All Photos or DPOF Photos” on page 18

For instructions on copying memory card files between your Epson Stylus CX4700 and a computer or other device, see the *User's Guide*.

Compatible Cards and Image Formats

You can use the following types of cards with your Stylus CX4700:



Slot	Type of card
Right slot	CompactFlash™ Microdrive™
Left slot	SmartMedia™ Memory Stick™ MagicGate™ Memory Stick MagicGate Memory Stick Duo* MultiMediaCard Memory Stick Duo™* Memory Stick PRO™ Memory Stick Pro Duo™* SD™ Card miniSD™ Card* xD-Picture Card™

* Adapter required

The Epson Stylus CX4700 supports image files that meet the following requirements:

Media format	DCF version 1.0 or 2.0 compliant*
File format	JPEG, DOS FAT (FAT 12 or 16, one partition) taken with a DCF version 1.0 or 2.0 compliant digital camera Supports Exif version 2.21
Image size	80 × 80 pixels to 9200 × 9200 pixels
Number of files	Up to 999

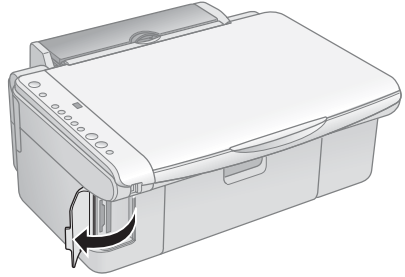
* DCF is the “Design rule for Camera File system” standard

Inserting the Card

1. Make sure the Epson Stylus CX4700 all-in-one is turned on.

Note: When you print directly from a memory card, it is best if the CX4700 is not connected to your computer (or your computer should be turned off).

2. Open the memory card door.



3. Make sure the memory card access light is off and that no cards are in any of the slots. Then insert your card into the correct slot. (See page 14 for details.)

The memory card access light flashes and then stays on.

4. Close the memory card door. Now you can:

- Print an index sheet so you can select which photos to print (page 16)
- Print all the photos on the card (page 18)
- Print photos pre-selected on your camera using DPOF (page 18)

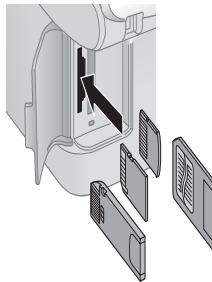
When you want to remove the card, make sure the memory card access light is not flashing, then pull the card straight out of its slot.

Note: You can print only in color when printing directly from a memory card; you cannot print in black and white.

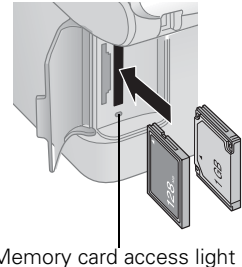
Caution: Do not remove the card or turn off the Stylus CX4700 while the memory card access light is flashing; you may lose data on the card.

Insert just one card at a time

Left slot



Right slot



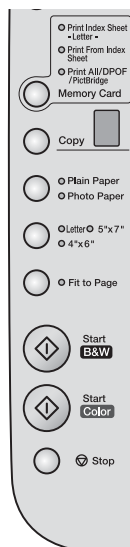
Memory card access light

Printing an Index Sheet to Select Photos

You can print an index sheet (which is like a photographer's contact or proof sheet) to see small "thumbnail" images of all the pictures on your card. Then you mark the pictures on the index sheet that you want to print, scan the sheet, and let the Epson Stylus CX4700 automatically print the selected photos.

Printing the Index Sheet

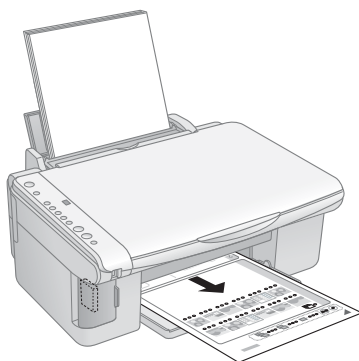
1. Make sure your CX4700 is not connected to your computer (or your computer is turned off).
2. Load several sheets of letter- or A4-size, plain paper. (Use only letter- or A4-size paper to print the index sheet.) Up to 30 images are printed on each page, so if there are more than 30 photos on the memory card, you'll need enough sheets for all the index pages to be printed..
3. Insert the memory card if it is not already in the slot (see page 15)
4. Press the **Memory Card** button one or more times until the **Print Index Sheet** light comes on.
5. Make sure **Plain Paper** and **Letter** are selected.



6. Press the **Start Color** button. The **On** light flashes, and the Epson Stylus CX4700 starts printing the index sheet(s). (This may take a few minutes.)

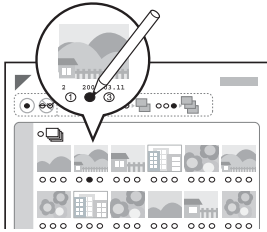
For multiple index sheets, the pages containing the most recent images are printed first. If you want to cancel printing more sheets, press the **Stop** button.

Now follow the instructions below to select which photos to print.



Selecting Photos on the Index Sheet

1. Once you have printed the index sheet, use a dark pen or pencil to fill in one of the ovals beneath each photo you want to print to indicate how many copies you want (1, 2, or 3).



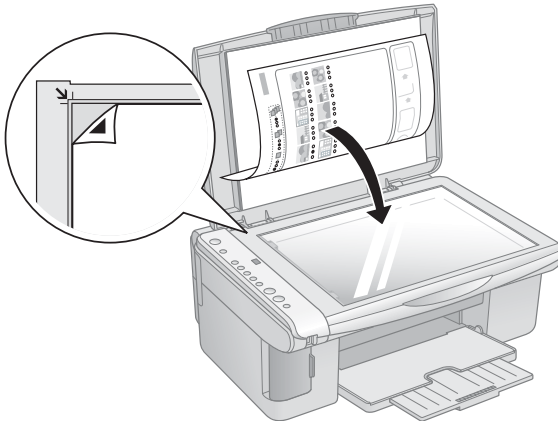
OK: 

No good:   

Make sure just one oval is filled in for each selected photo and mark the sheet carefully; once it has been scanned you will not be able to change your selections.

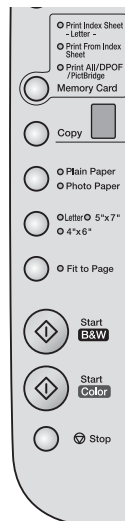
Note: If you want one copy of all the photos on the index sheet, fill in the **ALL** oval at the top of the page.

2. Place the index sheet face-down on the glass, in the upper left corner, so that the top of the sheet is aligned against the left edge of the glass.



3. Close the document cover.
4. Load up to 100 sheets of plain paper or up to 20 sheets of photo paper at a time (see page 6 for details). You can load more paper later as necessary to print all your selected photos.

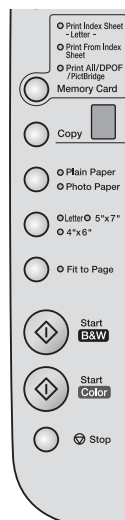
5. Make sure the **Print From Index Sheet** light is on.
6. Select **Plain Paper** or **Photo Paper** (whichever you loaded).
If you select **Plain Paper**, the photo(s) print with a white border. If you select **Photo Paper**, the photos print borderless, to the edge of the paper.
7. Select **Letter** (216 × 279 mm), **4" × 6"** (102 × 152 mm), or **5" × 7"** (127 × 178 mm) for the paper size.
8. Press the **Start Color** button to start printing.
Note: If you need to stop printing, press the **Stop** button.
9. When you are done printing, remove the memory card by pulling it straight out of its slot.



Printing All Photos or DPOF Photos

Follow the steps below to print one copy of each photo on the card or to print only those photos that were pre-selected with your camera's DPOF feature.

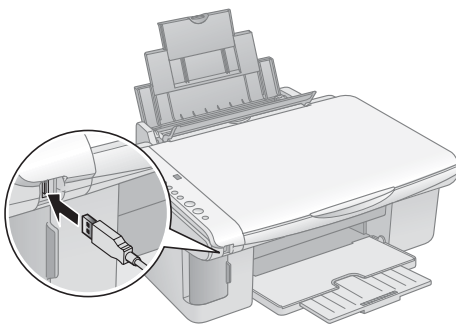
1. Insert the memory card (see page 15).
2. Load up to 100 sheets of plain paper or up to 20 sheets of photo paper at a time (see page 6 for details). You can load more paper later as necessary to print all your photos.
3. Press the **Memory Card** button until the **Print All/DPOF/PictBridge** light comes on.
Note: If the memory card does not contain DPOF information, one copy of all the photos on the card will be printed.
4. Select **Plain Paper** or **Photo Paper** (whichever you loaded).
If you select **Plain Paper**, the photo(s) print with a margin.
If you select **Photo Paper**, the photos print borderless
5. Select **Letter** (216 × 279 mm), **4" × 6"** (102 × 152 mm), or **5" × 7"** (127 × 178 mm) for the paper size.
6. Press the **Start Color** button to start printing.
Note: If you need to stop printing, press the **Stop** button.
7. When you are done, remove the memory card by pulling it straight out of its slot.



Printing From a Digital Camera

If your camera is PictBridge™ - or USB DIRECT-PRINT™-compatible, you can print your JPEG photos by connecting your digital camera directly to your Epson Stylus CX4100 or Epson Stylus CX4700 all-in-one. Your photos must be sized from 80 × 80 pixels to 9200 × 9200 pixels.

1. Make sure your Epson Stylus CX is not printing from a computer.
2. If you're using the Epson Stylus CX4700, remove any memory cards from slots and press the **Memory Card** button until the **Print All/DPOF/PictBridge** light comes on.
3. Load the type of paper you want to use (see page 6). Load enough sheets for the number of photos you'll be printing.
4. Select **Plain Paper** or **Photo Paper** (whichever you loaded). If you select **Photo Paper**, the photos print borderless, to the edge of the paper.
5. Select **Letter** (8.5 × 11 in. [216 × 279 mm]), **4" × 6"** (102 × 152 mm), or **5" × 7"** (127 × 178 mm) for the paper size.
6. Connect the USB cable that came with your camera to the USB connector on the front of your Epson Stylus CX.
7. Turn on your camera and select the photos you want to print. Then adjust any necessary settings and print your photos as explained in your camera manual.



Note: If your camera is not supported, a flashing **P** appears in the Copy window, and the **□** Error light flashes. (On the Epson Stylus CX4700, the **Print All/DPOF/PictBridge** light also flashes.) Epson cannot guarantee the compatibility of any camera.

Depending on the Epson Stylus CX settings and your digital camera settings, some combinations of paper type, size, and layout may not be supported. In addition, some of your digital camera settings may not be reflected in the printed output.

Printing From Your Computer

This section describes the basic steps for printing a photo or document stored on your Windows or Macintosh computer.

Note: For detailed instructions on printing, see the on-screen *User's Guide*.

Before you start, make sure you've installed your printer software and connected the Epson Stylus CX all-in-one to your computer as described on the *Start Here* sheet. Also be sure to use the right paper and select the correct paper type setting in the printer driver. (See page 26 for more information.)

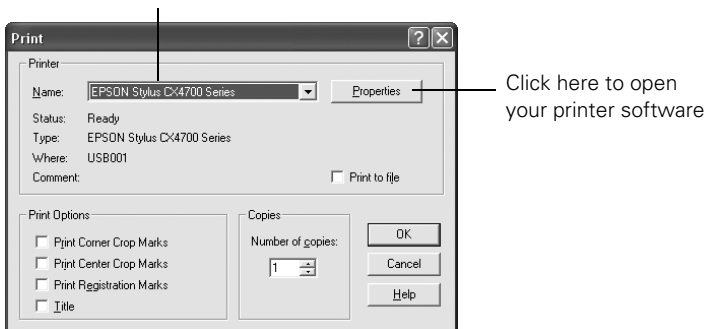
Follow the instructions in these sections:

- “Printing in Windows” (below)
- “Printing With Macintosh OS X” on page 23
- “Using Special Papers” on page 26

Printing in Windows

1. Load paper (see page 6).
2. Open the photo or document in your application program.
3. Open the File menu and select Print. You see a window like this one:

Select EPSON Stylus CX4100 Series
or EPSON Stylus CX4700 Series



4. Make sure Epson Stylus CX4100 or Epson Stylus CX4700 is selected, then click the Preferences or Properties button.

(If you see a Setup, Printer, or Options button, click it. Then click Preferences or Properties on the next screen.)

5. On the Main tab, select the basic print settings:

Select the type of document you're printing
(choose **Photo** or **Best Photo** for pictures)

The screenshot shows the 'Printing Preferences' dialog box with the following sections and annotations:

- Quality Option:** Five icons representing different print quality settings: Draft, Text, Text & Image (selected), Photo, and Best Photo. An annotation points to this section: "Select your paper Type".
- Paper Options:** Includes a 'Borderless' checkbox, a 'Type' dropdown menu set to 'Plain Paper / Bright White Paper', and a 'Size' dropdown menu set to 'Letter (8 1/2 x 11 in)'. An annotation points to the Type dropdown: "Select your paper Size".
- Print Options:** Includes checkboxes for 'PhotoEnhance', 'Reverse Order', and 'Print Preview'. An annotation points to the 'PhotoEnhance' checkbox: "Click here for borderless photos, after choosing paper Type".
- Ink Levels:** Four vertical bars representing the ink levels for different colors.
- Orientation:** Radio buttons for 'Portrait' (selected) and 'Landscape'. An annotation points to the 'Portrait' radio button: "Select your document Orientation".
- Buttons:** 'Reset Defaults', 'Online Support', 'Show Settings', 'Advanced', 'OK', 'Cancel', and 'Help'. An annotation points to the 'Advanced' button: "Click here for more options".

Make sure you choose the correct paper Type setting for the paper you are using. See page 26 for details.

Note: For more information about print settings, click the ? or Help button.

- For more printing options, click the **Advanced** button. Then select the following settings as necessary:

Select a color management method
(To choose **No Color Adjustment**, click ICM first)

Select **Paper & Quality** Options as necessary

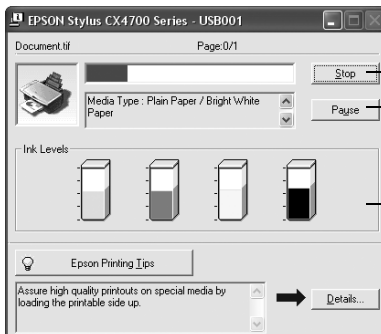
Select **Print Options** as necessary



Click here if you want to see this Advanced screen each time you access your print settings

Note: For more information about advanced settings, or instructions on saving them as a group so you can reuse them later, click **?** or **Help**.

- If you want to change the layout settings, click the **Page Layout** tab and select settings as necessary.
- Click **OK** to save your settings, then click **OK** or **Print** to start printing. This window appears and shows the progress of your print job.



Cancel printing

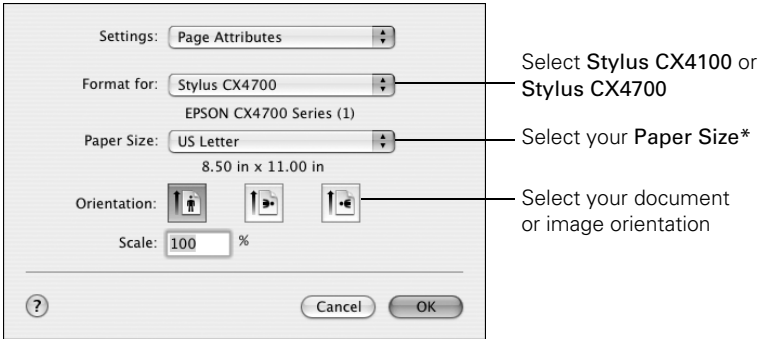
Pause or resume printing

Check remaining ink levels

Printing With Macintosh OS X

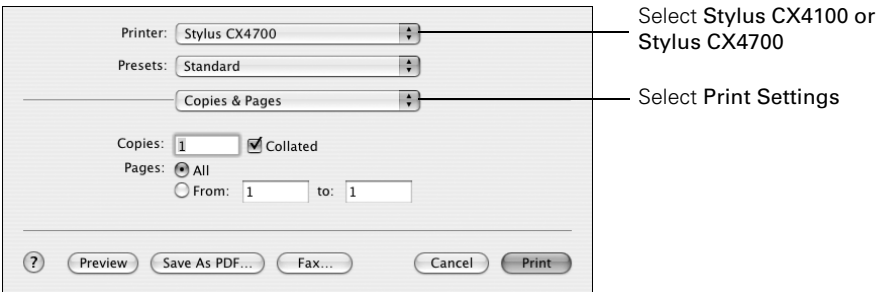
If you're using an OS X-compatible application, follow the steps below to print.

1. Load paper (see page 6).
2. Open the photo or document in your application.
3. Select **Page Setup** from the File menu. Make the following settings:

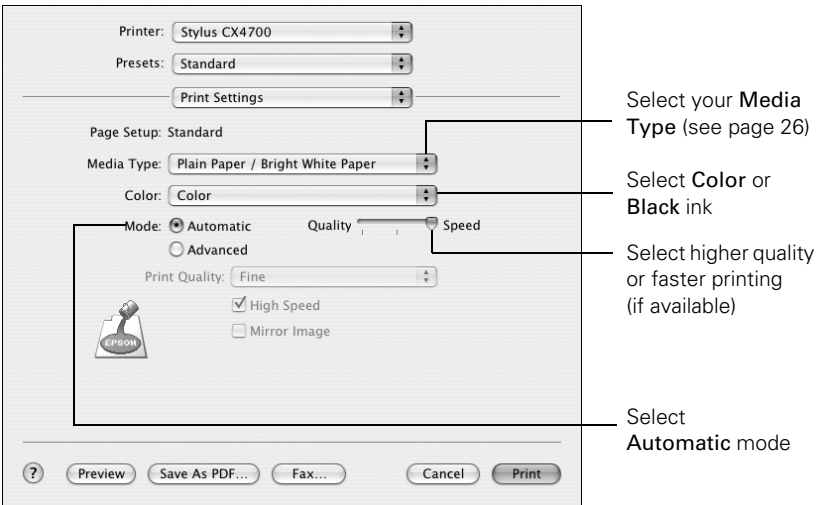


* For borderless printing, choose the **(Sheet Feeder - Borderless)** option in the Paper Size list for your paper size (**US Letter** [216 × 279 mm], **8 x 10** [203 × 254 mm], **5 x 7** [127 × 178 mm], or **4 x 6** [102 × 152 mm]).

4. Click **OK** to close the Page Setup window.
5. Select **Print** from the File menu. You see a window like this one:



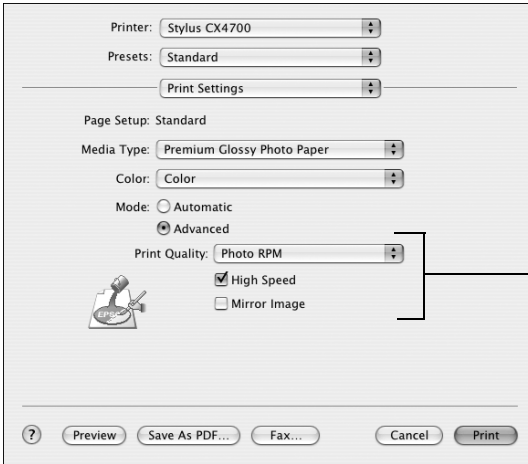
6. Choose **Print Settings** from the pop-up menu and select the following settings as necessary:



Note: For more information about printer settings, click the ? button.

7. Depending on your settings, you can choose these other options from the pop-up menu:
- **Copies & Pages:** Select the number of copies you want, or a page range.
 - **Layout:** Select page layout options.
 - **Output Options:** Save your print job as a PDF file.
 - **Scheduler:** Schedule your print job to print at a later time.
 - **Paper Handling:** Select page printing options, such as **Reverse** print order.
 - **Cover Page:** Print a cover page before your document or photo.
 - **ColorSync or Color Management:** Select ColorSync® or adjust the color controls, change the gamma setting, or turn off color adjustments in the printer software.
 - **Expansion:** Reduce or enlarge the image size for borderless printing.
 - **Summary:** View a list of all your selections.


8. Click the **Advanced** button to change additional settings.



Select Print Quality and other options as necessary

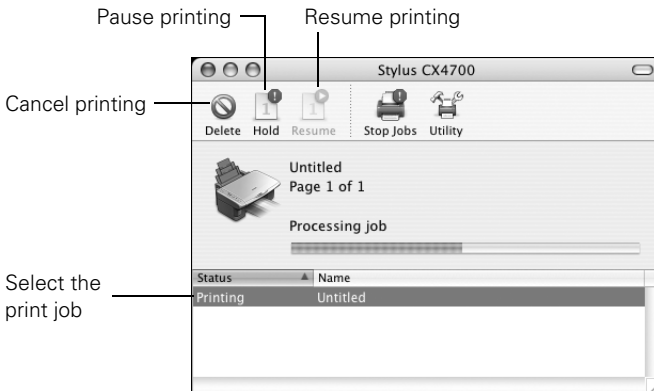
Note: For more information on advanced settings, or instructions on saving them as a group so you can reuse them later, click ?.

9. Click **Print**.

10. To monitor the progress of your print job, click the  printer icon when it appears in the dock on the bottom of your desktop.

If you're using OS X 10.2.x, click the  Print Center icon instead, then double-click **Stylus CX4100** or **Stylus CX4700** in the Printer List window.

You see a screen like this:



11. When you're finished, close the printer window or Print Center.

Using Special Papers

You can purchase genuine Epson ink and paper from an authorized Epson reseller. To find the nearest reseller, please call your nearest Epson sales office as described in “Where To Get Help” on page 40.

Paper name	Size	Part number
Epson Ultra Premium Glossy Photo Paper	Borderless 4 × 6 in. (102 × 152 mm)	S041934
	Letter (8.5 × 11 in. [216 × 279 mm])	S041935
Epson Premium Bright White Paper	Letter (8.5 × 11 in. [216 × 279 mm])	S041586
Epson Premium Glossy Photo Paper	Borderless 4 × 6 in. (102 × 152 mm)	S041808 S041727
	Borderless 5 × 7 in. (127 × 178 mm)	S041464
	Borderless 8 × 10 in. (203 × 254 mm)	S041465
	Letter (8.5 × 11 in. [216 × 279 mm])	S041286
Epson Premium Semigloss Photo Paper	Letter (8.5 × 11 in. [216 × 279 mm])	S041331
Epson Glossy Photo Paper	Borderless 4 × 6 in. (102 × 152 mm)	S041809
	Letter (8.5 × 11 in. [216 × 279 mm])	S041141 S041649 S041271
Epson Matte Paper Heavyweight	Borderless 8 × 10 in. (203 × 254 mm)	S041467
	Letter (8.5 × 11 in. [216 × 279 mm])	S041257
Epson Double-Sided Matte Paper	Letter (8.5 × 11 in. [216 × 279 mm])	S041568
Epson Photo Quality Ink Jet Paper	Letter (8.5 × 11 in. [216 × 279 mm])	S041062
	Legal (8.5 × 14 in. [216 × 356 mm])	S041067

Select the correct **Type** (see page 21) or **Media Type** (see page 24) setting in your printer software:

For this paper	Select this setting
Epson Ultra Premium Glossy Photo Paper	Ultra Premium Glossy Photo Paper
Plain paper or Epson Premium Bright White Paper	Plain Paper/Bright White Paper
Envelopes	Envelope
Epson Matte Paper Heavyweight Epson Double-Sided Matte Paper Epson Photo Quality Ink Jet Paper	Matte Paper - Heavyweight
Epson Premium Glossy Photo Paper	Premium Glossy Photo Paper
Epson Premium Semigloss Photo Paper	Premium Semigloss Photo Paper
Epson Glossy Photo Paper	Glossy Photo Paper

Scanning a Photo or Document

You can use your Epson Stylus CX all-in-one to scan a photo or document and save it on your computer or other device, or to fax or e-mail it to someone else.

You can even automatically restore faded color photographs as you scan. See page 29 for details.

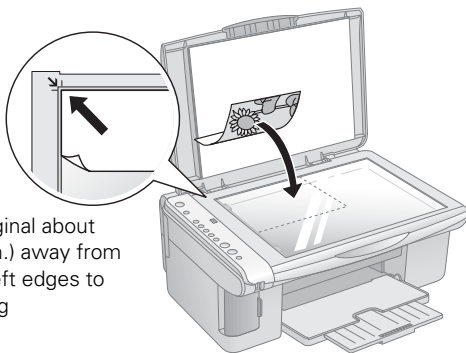
The EPSON Scan software provides three scanning modes for progressive levels of control over your scanned image:

- **Full Auto Mode** scans quickly and easily using automatic settings.
- **Home Mode** previews your image and provides automatic image adjustments, cropping tools, and preset options for various types of scans.
- **Professional Mode** previews your image and lets you manually configure your scan settings with a full array of tools.

Basic Scanning

You can scan from any TWAIN-compliant application—such as ArcSoft PhotoImpression™—using EPSON Scan. Or you can start EPSON Scan directly from your computer and save your image to a file.

1. Open the document cover and place your original face-down on the glass, in the upper left corner. Move your original about 1 mm (0.04 in.) away from the top and left edges so all of it will be scanned.



Move the original about 1 mm (0.04 in.) away from the top and left edges to avoid cropping

Note: If you need to scan a thick document, you can remove the document cover; see page 9.

2. Close the cover gently so you don't move the original.
3. Do one of the following to start EPSON Scan:
 - **Windows:** Double-click the EPSON Scan icon on your desktop.
 - **Macintosh:** Double-click EPSON Scan in the Applications folder.
 - If you are scanning from an application, start your application. Then open the File menu, choose **Import** or **Acquire**, and select **Epson Stylus CX4100** or **Epson Stylus CX4700**.

You see the EPSON Scan standby window:

4. If the Mode setting in the upper right corner is set to **Full Auto Mode**, click the **Scan** button.

Note: If you want to automatically restore a color photo as you scan, click the **Customize** button and see page 29 for instructions.

If you are in Home or Professional Mode, you see a different EPSON Scan settings window. (You can change the mode using the Mode selector in the upper right corner. For details, see the on-screen *User's Guide*.)

5. You see the File Save Settings window:

Choose the location where you want to save your scanned file and type a name for it in the Prefix box. Select a file format in the Image Format box.

6. Click **OK**. The image is scanned and you see its icon in an open folder.

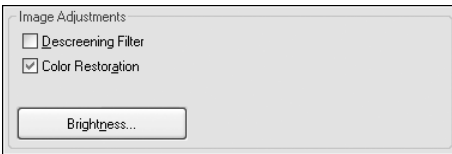
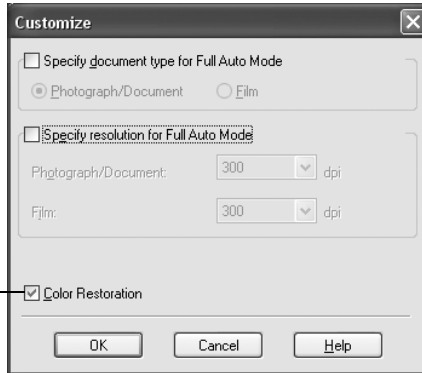


Restoring Color in Faded Photos

You can automatically transform an old, faded, or badly exposed color photo into one with true-to-life color and sharpness as you scan. Look for the **Color Restoration** option in EPSON Scan's Full Auto, Home, and Professional Mode screens:

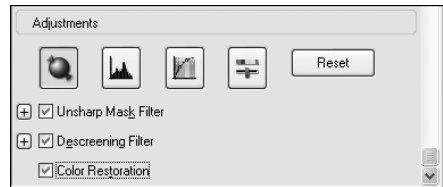
Full Auto Mode

Click the **Customize** button, click the **Color Restoration** button, click **OK**, and click **Scan**.



Home Mode

Preview your image, click the **Color Restoration** button, and click **Scan**.



Professional Mode

Preview your image, scroll down to the **Adjustments** area, click the **Color Restoration** button, and click **Scan**.

Note: For details on using Home or Professional Mode, or for more information about Full Auto Mode settings, see the on-screen *User's Guide*. You can also click **Help** on the EPSON Scan screen for information about all the available settings.



Maintaining Your Epson Stylus CX All-in-One

If you notice a decline in print quality, follow the instructions in this chapter for:

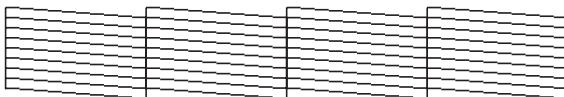
- “Checking the Print Head Nozzles and Ink” (below)
- “Cleaning the Print Head” on page 31
- “Replacing Ink Cartridges” on page 32

Checking the Print Head Nozzles and Ink

If your printouts are faint or have gaps in them, some of the nozzles in the print head may be clogged or ink may be running low in one or more of the ink cartridges. Follow the steps below to check the print head nozzles and remaining ink levels using the control panel.

1. Turn off the Epson Stylus CX.
2. Load letter-size paper in the sheet feeder.
3. Press the  ink and  On buttons together and hold them down for about 3 seconds. The Epson Stylus CX turns on and prints a test pattern. It also shows the percentage of ink left in each cartridge:

Print head does not need to be cleaned yet:



Print head needs to be cleaned:




If the pattern does not look good, try cleaning the print head as described on the next page.





Note: You can also check the ink level using Status Monitor 3; see the on-screen *User's Guide*.

Cleaning the Print Head


If your printouts are unexpectedly light or faint, or you notice light or dark bands across your printout, you may need to clean the print head. This unclogs the nozzles so they can deliver ink properly. Run a nozzle check as described on page 30 to see if the print head needs cleaning.

Note: Print head cleaning uses ink, so clean it only if quality declines and the nozzle check indicates that the print head needs to be cleaned.

If the red  ink light comes on or flashes, you cannot clean the print head. In this case, replace the appropriate ink cartridge first; see page 32.

1. Make sure the Epson Stylus CX is on and the  ink light is off.
2. Hold down the  ink button for 3 seconds until the  On light starts flashing. The Epson Stylus CX runs a head cleaning cycle and the  On light flashes.



Caution: Never turn off the Epson Stylus CX while head cleaning is in progress. You may damage it.

3. When the  On light stops flashing, run a nozzle check (as described on page 30) to verify that the print head is clean.
4. If there are still gaps or lines, or the test patterns are faint, run another cleaning cycle and check the nozzles again.

Note: If you don't see any improvement after cleaning the print head four or five times, turn off the Epson Stylus CX and wait overnight. This lets any dried ink soften. Then try cleaning the print head again. If quality still does not improve, one of the ink cartridges may be old or damaged and needs to be replaced; see page 32.

Tip: If you do not use your Epson Stylus CX often, it is a good idea to print a few pages at least once a month to maintain good print quality.

Replacing Ink Cartridges

When the red  ink light starts flashing, one or more cartridges are low on ink. When the red  ink light stays on, you need to replace the cartridge(s). You'll also see a message on your screen when you print, telling you which cartridge is low or empty. (You cannot print when a cartridge is empty.)

You can purchase genuine Epson ink and paper from an authorized Epson reseller. To find the nearest reseller, please call your nearest Epson sales office as described in “Where To Get Help” on page 40.

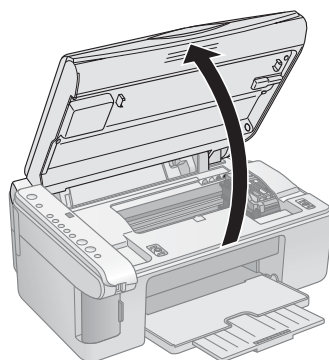
Color	Part number
Black	T063120
Cyan	T063220
Magenta	T063320
Yellow	T063420

Caution: Leave the empty cartridge installed until you have obtained a replacement, or the ink remaining in the print head nozzles may dry out.


We recommend that you use genuine Epson cartridges. The use of other products may affect your print quality and could result in printer damage. See www.latin.epson.com for more cartridge information. Yields vary considerably based on images printed, print settings, paper type, frequency of use, and temperature. The printer ships with full cartridges and part of the ink from the first cartridges is used for priming the printer.

1. Make sure the Epson Stylus CX is on.
2. Make sure that the document cover is closed, then open the scanner.


Caution: Do not open the scanner when the document cover is open.

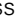


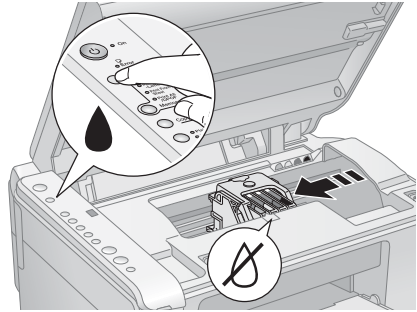
3. Press and release the  ink button. The  On and  ink lights flash.


If one of the cartridges is low or empty, the Epson Stylus CX moves that cartridge to the  ink out mark. Go to step 4.


If no cartridges are low or empty, the ink cartridge holder moves to the ink replacement position. Go to step 5.

Note: Do not hold down the  ink button for more than 3 seconds or the printer will start to clean the print head.

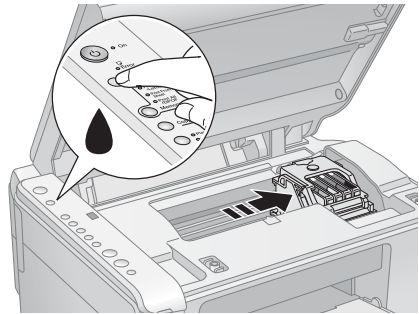
Caution: Do not move the print head by hand; this may damage the Epson Stylus CX. Always press the  ink button to move it.



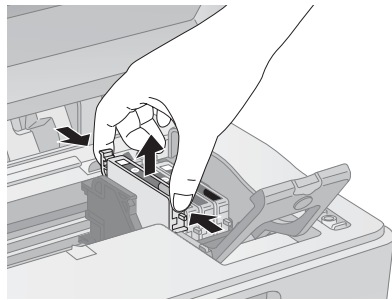
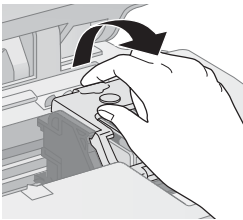
4. Press the  ink button again.

- If more than one cartridge is empty or low, the next cartridge moves to the  ink out mark.

- Once the Epson Stylus CX identifies all of the empty or low ink cartridges, the print head moves to the ink cartridge replacement position.

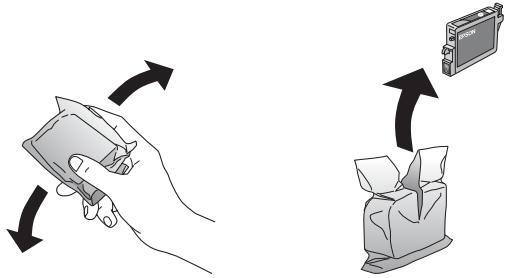


5. Open the cartridge cover, then squeeze the tab at the back of the cartridge and lift it straight out. Dispose of it carefully. Do not take the used cartridge apart or try to refill it.



Warning: If ink gets on your hands, wash them thoroughly with soap and water. If ink gets into your eyes, flush them immediately with water.

6. Before you open the new ink cartridge package, shake it four or five times. Then remove it from the package.

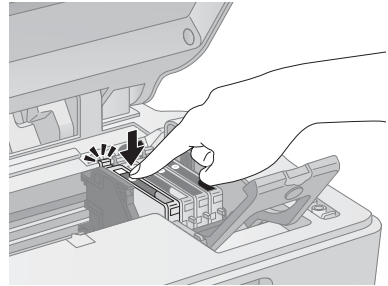


Caution: Do not remove or tear the label on the cartridge; otherwise, ink will leak.

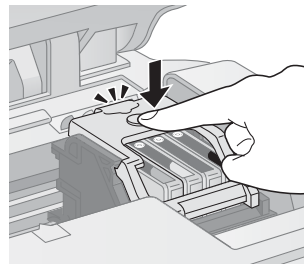
Do not touch the green chip on the front of the cartridge. This can damage the ink cartridge.



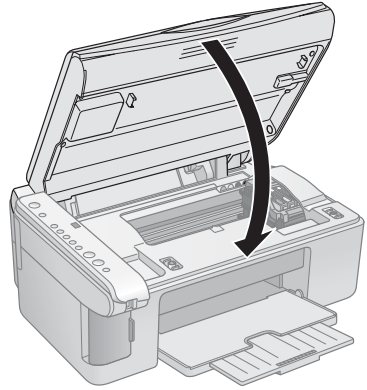
7. Place the new ink cartridge into the cartridge holder and push it down until it clicks into place.
8. Replace any other cartridges that need to be replaced.


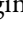




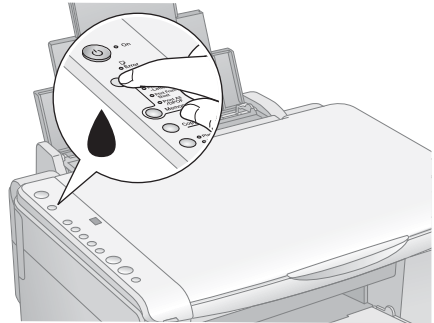
9. Close the ink cartridge cover and press it until it clicks into place.






10. Close the scanner.



11. Press the  ink button. The Epson Stylus CX begins charging ink and the  On light starts flashing. This takes about one minute. When it's finished, the  On light stops flashing and remains on, and the  ink light goes out.



Caution: Never turn off the Epson Stylus CX while the  On light is flashing or you'll waste ink.

Note: If the  ink light stays on (not flashing), the ink cartridge may not be installed correctly. Press the  ink button again and reinstall the ink cartridge until it clicks into place.

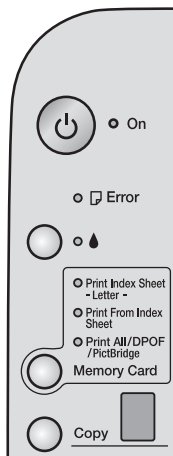
Solving Problems

If you have a problem with your Epson Stylus CX all-in-one, check the lights on the control panel and the number or letter in the Copy window to diagnose the cause.

You can also check “Problems and Solutions” on page 38 for basic troubleshooting suggestions, or double-click the *User’s Guide* icon on your computer desktop for more detailed help.














See these sections:

- “Error Indicators” (below)
- “Problems and Solutions” on page 38
- “Where To Get Help” on page 40



Error Indicators

Light: status	Copy window status	Cause	Solution
⏻ On: Flashing ❏ Error: On	—	No paper is loaded in the sheet feeder.	Load paper in the sheet feeder. Then press Start Color to continue or Stop to cancel. See page 6.
	—	Multiple pages have been fed into the sheet feeder.	Remove and reload the paper. Then press Start Color to continue or Stop to cancel. See page 6.
❏ Error: Flashing	—	Paper is jammed.	See page 38.
💧 Ink: Flashing	—	An ink cartridge is running low on ink.	See “Replacing Ink Cartridges” on page 32.
💧 Ink: On	—	An ink cartridge is empty or not installed correctly.	See “Replacing Ink Cartridges” on page 32.

Light: status	Copy window status	Cause	Solution
 Error: Flashing Memory Card (all 3 lights): Flashing (Epson Stylus CX4700 only)	1	A memory card is inserted that is not supported by the Epson Stylus CX4700.	Remove the incompatible memory card; see page 14.
		The inserted memory card does not contain any valid images.	See page 14 for a list of compatible card and image types.
 Error: Flashing Print From Index Sheet: Flashing (Epson Stylus CX4700 only)	2	An index sheet was not recognized because it is not positioned correctly.	Position the index sheet correctly on the glass, aligning the top of it with the left edge of the glass. Then press  Start Color to continue or  Stop to cancel.
	3	The index sheet is marked incorrectly. (No marks are detected or the sheet includes more than one mark for an image.)	Remove the index sheet, mark it correctly, and try again; see page 17.
	4	The index sheet does not match the photos on the memory card.	Remove the memory card and insert the card used to print the index sheet (see page 15 for instructions)—or place the correct index sheet on the glass. Then press  Start Color to continue or  Stop to cancel.
 Error: Flashing fast	H	The paper thickness lever is set to the  H position.	If you have set the lever to the  H position because you are printing envelopes, press  Start Color to continue. Otherwise, set the lever to the  L position.
 Error: On  Ink: On All other lights: Flashing	E	An Epson Stylus CX part needs to be replaced.	Contact your local authorized servicer or contact Epson for a referral; see page 40.
All lights: Flashing	E	There is a problem with the Epson Stylus CX.	Turn the Epson Stylus CX off and then back on. If the error does not clear, contact your local authorized servicer or contact Epson for a referral; see page 40.



Problems and Solutions


Check the solutions below if you're having trouble using your Epson Stylus CX.

Copying Problems

- Make sure your original is positioned in the top left corner of the glass. Place it 1 mm (0.04 in.) from the edges to avoid cropping.
- Make sure your paper is loaded short edge first and is positioned against the right edge guide with the left edge guide against its left side. Don't load paper above the arrow mark inside the left edge guide.

Paper Feeding Problems

- If paper doesn't feed, remove it from the sheet feeder. Flip through the stack to separate the sheets a little. Then reload the paper against the right edge guide, and slide the left edge guide against the paper (but not too tightly). Make sure the paper is not in front of the feeder guard.
- Do not load too many sheets at once (up to 20 sheets of photo paper and 100 sheets of plain paper). See the *User's Guide* for more information.
- If paper is jammed, the red  Error light flashes. Follow these steps to clear the jam:
 1. Press the  Start Color button to eject the jammed paper. If the jammed paper is not ejected, go to the next step.
 2. If the paper is stuck near the sheet feeder or output tray, gently pull it out.

If the paper is stuck inside the Epson Stylus CX, press the  On button to turn it off. Open the scanner and remove any paper inside, including any torn pieces. Do not pull it backward however; this can damage the sheet feeder. Close the scanner, then turn the Epson Stylus CX back on.

Print Quality Problems

If you have any problems with the copy or print quality, try these solutions:

- Make sure the document is placed flat against the document table glass and the Epson Stylus CX is not tilted or placed on an uneven surface.
- Load the paper printable side up (usually the whiter, brighter, or glossy side).
- Make sure your paper isn't damp or curled.
- Use a support sheet with special paper or load your paper one sheet at a time. Remove sheets from the output tray so not too many collect at a time.
- Make sure the type of paper you loaded matches the paper size and paper type settings on the control panel or in your printer software (see page 26).
- For the best print quality, use Epson special paper (see page 26) and genuine Epson ink cartridges (see page 32).
- Set the paper thickness lever to the L position for most paper types. If you are printing on envelopes, set the lever to the H position.
- If you notice light or dark bands across your printouts or they are too faint, you may need to clean the print head. This unclogs the nozzles so they can deliver ink properly. Run a nozzle check as described on page 30 to see if the print head needs cleaning.
- Clean the print head as described on page 31.
- If you notice jagged vertical lines, you may need to align the print head. See your *User's Guide* for instructions.
- The ink cartridges may be old or low on ink; see page 32 for instructions on replacing an ink cartridge.
- If a dotted line appears in the image, clean the scanner glass with a soft, dry, lint-free cloth (paper towels are not recommended), or use a small amount of glass cleaner on a soft cloth, if necessary. **Don't spray glass cleaner directly on the glass.**

Where To Get Help

Internet support service in Latin America

Service	Access
World Wide Web	From the Internet, you can reach Epson Support at www.latin.epson.com . At this site, you can download drivers and other files, access troubleshooting information, and receive technical advice through e-mail.

Telephone support service in Latin America

Country	Telephone number
Argentina	(54-11) 5167-0300
Brazil	(55-11) 4196-6350
Chile	(56-2) 230-9500
Costa Rica	(506) 210-9555 (1-800) 377-6627
Colombia	(57-1) 523-5000
Mexico Mexico City Other cities	(52-55) 1323-2052 01-800-087-1080
Peru	(51-1) 224-2336
Venezuela	(58-212) 240-1111

Note: If your country does not appear on the list, contact the nearest Epson sales office. Toll or long distance charges may apply.

Please have the following information ready:

- Product name (Epson Stylus CX4100 or Epson Stylus CX4700)
- Product serial number (located on the back of the printer)
- Proof of purchase (such as a store receipt) and date of purchase
- Computer configuration and operating system version
- Description of the problem

You can purchase genuine Epson ink and paper from an authorized Epson reseller. To find the nearest reseller, please call your nearest Epson sales office.

Notices

System Requirements

Windows System Requirements

To use your Epson Stylus CX all-in-one and its software, your system should have:

- A Microsoft® Windows compatible PC with a Pentium®-equivalent processor (300 MHz or faster recommended)
- Microsoft Windows 98SE, Windows Me, Windows 2000, or Windows XP
- At least 256MB RAM (512MB recommended)
- 200MB free hard disk space (300MB recommended)
- VGA monitor with at least a 256 color display
- CD-ROM or DVD drive for installing software
- A computer with preinstalled Windows 98SE, Me, 2000, or XP, and a Windows-compliant USB port and shielded USB “AB” cable. Using an improperly shielded USB cable may cause the printer to malfunction.

Macintosh System Requirements

To use your Epson Stylus CX all-in-one and its software, your system should have:

- An Apple iMac™ series or Power Macintosh® G3, G4, or G5 with a built-in USB port
- Macintosh OS X 10.2.4 to 10.3.x
- 512MB RAM
- 200MB free hard disk space (300MB recommended)
- VGA monitor with at least a 256 color display
- CD-ROM or DVD drive for installing software
- A shielded USB “AB” cable. Using an improperly shielded USB cable may cause the printer to malfunction.

Important Safety Instructions

Before using your Epson Stylus CX all-in-one, read and follow these safety instructions:

- Be sure to follow all warnings and instructions marked on the Epson Stylus CX.
- Use only the type of power source indicated on the Epson Stylus CX label.
- Use only the power cord that comes with the Epson Stylus CX. Use of another cord may cause fires or shock. Do not use the cord with any other equipment.
- Place the Epson Stylus CX near a wall outlet where the plug can be easily unplugged.
- Do not let the power cord become damaged or frayed.
- If you use an extension cord with the Epson Stylus CX, make sure the total ampere rating of the devices plugged into the extension cord does not exceed the cord's ampere rating. Also, make sure the total ampere rating of all devices plugged into the wall outlet does not exceed the wall outlet's ampere rating.
- Avoid locations that are subject to rapid changes in heat or humidity, shocks or vibrations, or dust.
- Leave enough room around the Epson Stylus CX for sufficient ventilation. Do not block or cover openings in the Stylus CX's case or insert objects through the slots.
- Do not place the Epson Stylus CX near a radiator or heating vent or in direct sunlight.
- Place the Epson Stylus CX on a flat, stable surface that extends beyond its base in all directions. It will not operate properly if it is tilted or at an angle.
- Make sure the back of the Epson Stylus CX is at least 10 cm (3.9 in.) away from the wall.
- Do not open the scanner section while the Epson Stylus CX is copying, printing, or scanning.
- Do not spill liquid on the Epson Stylus CX.
- Except as specifically explained in your documentation, do not attempt to service the Epson Stylus CX yourself.
- Unplug the Epson Stylus CX and refer servicing to qualified service personnel under the following conditions: if the power cord or plug is damaged; if liquid has entered the product; if the product has been dropped or the case damaged; if the product does not operate normally or exhibits a distinct change in performance. Adjust only those controls that are covered by the operating instructions.
- When storing or transporting the Epson Stylus CX, do not tilt it, stand it on its side, or turn it upside down; otherwise ink may leak from the cartridge.
- The lamp in this product contains mercury (Hg). Dispose of it according to local, state, or federal laws.

Ink Cartridge Safety Instructions

- Keep ink cartridges out of the reach of children and don't drink the ink.
- Be careful when you handle used ink cartridges; there may be ink remaining around the ink supply port. If ink gets on your skin, wash it off with soap and water. If it gets in your eyes, flush them immediately with water.

- Do not put your hand inside the Epson Stylus CX or touch any cartridges during printing.
- Install a new ink cartridge immediately after removing an empty one. Leaving cartridges uninstalled can dehydrate the print head and may prevent the Epson Stylus CX from printing.
- If you remove an ink cartridge for later use, protect the ink supply area from dirt and dust and store it in the same environment as the Epson Stylus CX. Note that there is a valve in the ink supply port, making covers or plugs unnecessary, but care is needed to prevent the ink from staining items that the cartridge touches. Do not touch the ink cartridge ink supply port or surrounding area.

Specifications

Printing	
Printing method	On-demand ink jet
Nozzle configuration	360 nozzles; Black: 90 nozzles; color: 90 nozzles for each color (cyan, yellow, magenta)
Print direction	Bidirectional with logic seeking
Ink Cartridges	
Color	Black: T063120, Cyan: T063220, Magenta: T063320, and Yellow: T063420
Cartridge life	6 months at 25 °C (77 °F) after opening the package
Temperature	Storage: -20 to 40 °C (-4 to 104 °F) 1 month at 40 °C (104 °F) Freezing*: -16 °C (3.2 °F)
*Ink thaws and is usable after approximately 3 hours at 25 °C (77 °F).	
<p>Caution: To ensure good results, use genuine Epson ink cartridges and do not refill them. Other products may cause damage to your printer not covered by Epson's warranty.</p> <p>Do not use an ink cartridge if the date on the package has expired.</p>	
Mechanical	
Paper path	Sheet feeder, top entry
Sheet feeder capacity	About 100 sheets at 64 g/m ² (17 lb)

Dimensions	430 (W) × 354 (D) × 181 mm (H) (16.9 × 13.9 × 7.1 in.) [without the rubber feet or the paper support extended]	
Weight	6.8 kg (15 lb), without ink cartridges	
Electrical		
	110 Model	220 Model
Input voltage	90 - 132 V	198 - 264 V
Rated frequency	50 to 60 Hz	
Rated current	0.4 A (0.7 A max)	0.2 A (0.3 A max)
Power consumption	Approx. 13 W (ISO 10561 Letter pattern) Approx. 4 W sleep mode Approx. 4.5 W low power mode Approx. 0.2 W power off mode	Approx. 13 W (ISO 10561 Letter pattern) Approx. 4 W sleep mode Approx. 4.5 W low power mode Approx. 0.3 W power off mode
Note: Check the label on the back of the printer for the voltage information.		
Environmental		
Temperature	Operation: 10 to 35 °C (50 to 95 °F) Storage: -20 to 40 °C (-4 to 104 °F) 1 month at 40 °C (104 °F)	
Humidity	Operation: 20 to 80% RH** Storage*: 5 to 85% RH**	
*Stored in shipping container **Without condensation		
Scanning		
Scanner type	Flatbed color image scanner	
Photoelectric device	CIS	
Effective pixels	10,200 × 14,040 pixels at 1200 dpi	
Maximum document size	8.5 × 11.7 inches (216 × 297 mm) US letter or A4 size	
Scanning resolution	1200 dpi (main scan) 2400 dpi with Micro Step Drive™ (subscan)	

Output resolution	50 to 4800, 7200, and 9600 dpi (50 to 4800 dpi in 1 dpi increments)
Scanning speed	Approximately 30 msec per line at 1200 dpi
Image data	16 bits per pixel per color internal 8 bits per pixel per color external (maximum)
Interface	One USB 2.0 Hi-speed or USB 1.1 port
Light source	RGB three color LED
Standards and Approvals	
Safety	UL 60950; CSA C22.2 No. 60950
EMC	FCC part 15 Subpart B class B; CAN/CSA-CEI/IEC CISPR 22

ENERGY STAR Compliance

As an ENERGY STAR® Partner, Epson has determined that this product meets the ENERGY STAR guidelines for energy efficiency. The EPA ENERGY STAR office equipment program is a voluntary partnership with the computer and office equipment industry to promote the introduction of energy-efficient personal computers, monitors, printers, fax machines, and copiers in an effort to reduce air pollution caused by power generation.



FCC Compliance Statement

For United States Users

This equipment has been tested and found to comply with the limits for a Class B digital device, pursuant to Part 15 of the FCC Rules. These limits are designed to provide reasonable protection against harmful interference in a residential installation. This equipment generates, uses, and can radiate radio frequency energy and, if not installed and used in accordance with the instructions, may cause harmful interference to radio or television reception. However, there is no guarantee that interference will not occur in a particular installation. If this equipment does cause interference to radio and television reception, which can be determined by turning the equipment off and on, the user is encouraged to try to correct the interference by one or more of the following measures:

- Reorient or relocate the receiving antenna.
- Increase the separation between the equipment and receiver.
- Connect the equipment into an outlet on a circuit different from that to which the receiver is connected.
- Consult the dealer or an experienced radio/TV technician for help.

WARNING

The connection of a non-shielded equipment interface cable to this equipment will invalidate the FCC Certification of this device and may cause interference levels which exceed the limits established by the FCC for this equipment. It is the responsibility of the user to obtain and use a shielded equipment interface cable with this device. If this equipment has more than one interface connector, do not leave cables connected to unused interfaces. Changes or modifications not expressly approved by the manufacturer could void the user's authority to operate the equipment.

For Canadian Users

This Class B digital apparatus complies with Canadian ICES-003.

Cet appareil numérique de la classe B est conforme à la norme NMB-003 du Canada.

Declaration of Conformity

According to 47CFR, Part 2 and 15 for: Class B Personal Computers and Peripherals; and/or CPU Boards and Power Supplies used with Class B Personal Computers:

We: Epson America, Inc.
Located at: MS 3-13
3840 Kilroy Airport Way
Long Beach, CA 90806
Telephone: (562) 290-5254

Declare under sole responsibility that the product identified herein, complies with 47CFR Part 2 and 15 of the FCC rules as a Class B digital device. Each product marketed is identical to the representative unit tested and found to be compliant with the standards. Records maintained continue to reflect the equipment being produced can be expected to be within the variation accepted, due to quantity production and testing on a statistical basis as required by 47CFR §2.909. Operation is subject to the following two conditions: (1) this device may not cause harmful interference, and (2) this device must accept any interference received, including interference that may cause undesired operation.

Trade Name: Epson
Type of Product: Multifunction printer
Model: C231B (Epson Stylus CX4100)
C231A (Epson Stylus CX4700)

Limited Warranty

1. Limited Warranty for Epson Products

Epson products are covered by warranty against defects in workmanship and materials when operated under normal use and handling conditions, as indicated in the product documentation, for the period specified in section “Limited Warranty Coverage”. Coverage begins as of the date of delivery to the purchaser by Epson or by an authorized Epson dealer (see “Epson Subsidiaries and Offices in Latin America”), in the country of purchase.

Epson also guarantees that the consumables (ink cartridges, toner, batteries) included with the product, will perform according to the usage specifications as long as they are used prior to the expiration of their warranty period.

2. Scope of Warranty

Should Epson receive notice of a defect during the warranty period, it may, at its discretion, repair or replace the defective product at no cost to the purchaser. In the event of a replacement, the replaced equipment will become property of Epson. The replaced item may be new or previously repaired to the Epson standard of quality, and will assume the remaining warranty period of the product that was originally purchased.

This warranty does not include any compensation or damages whatsoever, resulting from the operating failures of the Epson product. In any event, Epson’s maximum liability toward the purchaser will be limited to the purchase price paid to Epson or to the authorized dealer.

Epson’s warranty does not cover any software not manufactured by Epson, even when delivered with an Epson product. The software may have a warranty provided by the manufacturer, as indicated in the documentation attached thereto.

3. Limitations and Exclusions

The warranty will be invalid in the following cases:

- 3.1 When the product’s serial number has been removed or altered.
- 3.2 When the product has been misused, has undergone unauthorized modifications, has been used or stored in ways that are not in compliance with the environmental specifications of the product.
- 3.3 When the damage resulted from the use of refilled supplies or consumables, or when damages are the result of use of media that does not meet the product’s specifications.
- 3.4 When damages resulted from the inappropriate transport of the equipment (packaging, installation, maintenance, transportation).
- 3.5 When damages were caused by natural or intentional disasters (fire, floods, lightning, earthquakes, etc.), power surges, or interaction with other brand products.
- 3.6 When the product has been totally or partially disassembled, or has been repaired other than by an Epson Authorized Service Center.
- 3.7 When substances have been spilled on the product.

3.8 When the external plastic case has been scratched or abused.

3.9 When damages resulted from inappropriate tests, installation, maintenance or adjustments.

The warranty does not extend to accessories (lids, covers, trays) or replenishing supplies and consumables (ink cartridges, toner, ink ribbons, batteries, photosensitive units, knobs, print heads, lamps), which, due to their nature, must be regularly purchased through authorized dealers.

4. How To Obtain Warranty Service

Please refer to the user documentation to ensure that the product settings have been properly set and to perform the diagnostic tests indicated therein. Furthermore, in order for the unit to operate optimally, always use original Epson supplies and consumables.

To obtain warranty service, the purchaser may take the product to any Authorized Epson Service Center, along with proof of purchase, or call any of the Epson Technical Assistance Centers (see country list starting on page 48).

Upon calling an Authorized Epson Service Center, the purchaser will be asked to provide the product model and serial numbers, and may be asked to provide information on the location and the date of purchase (the warranty is only valid in the country of purchase).

If the product warranty includes on-site service assistance, it will be provided on the next working day in the cities where this service is offered by Epson.

If there are no Authorized Service Centers in your area, call the Technical Assistance Center for service referral.

5. Responsibilities of Purchaser

The purchaser is responsible for the safety of all confidential and proprietary information stored on the product, as well as for recovery backup files in case of damage. Any activity related with the re-installation or resetting of the software that was delivered with the equipment, will be billed to the purchaser at the rates in effect at the Epson Service Center. This also applies if the failure was the result of a defect in the purchaser's proprietary software or of a computer "virus".

In order to obtain on-site service, the latter will be required to provide: access to the product; an appropriate working area; access to electrical facilities; access to the resources that may be necessary for the installation, repair or maintenance of the unit; a safety environment for Epson staff and their work tools.

6. Limited Warranty Coverage

Product	Model	Coverage	Conditions
Multifunction printer	Epson Stylus CX	One year	Service center

Technical Support Service

Epson offers technical assistance through electronic and telephone services. Before calling Epson, refer to the documentation included with your product. If you do not find the solution to your problem, visit Epson's website at: <http://www.latin.epson.com> or call the local Epson office or an authorized dealer.

Service Centers

Country	Telephone number	Web site
Argentina	(54-11) 5167-0300	www.epson.com.ar
Brazil	(55-11) 4196-6350	www.epson.com.br
Chile	(56-2) 230-9500	www.epson.cl
Colombia	(57-1) 523-5000	www.epson.com.co
Costa Rica	(50-6) 210-9555	www.epsoncr.com
Mexico	(52-55) 1323-2052	www.epson.com.mx
Peru	(51-1) 224-2336	www.epson.com
Venezuela	(58 212) 240-1111	www.epson.com.ve

If your country does not appear on the preceding list, please contact the dealer where you purchased the product.

You may receive help or consult information online for all Epson products. Register your Epson equipment on our website, at <http://www.latin.epson.com>.

Extended Warranty Support and Service

In some countries, Epson offers warranty extension services. You may purchase this service by calling the Technical Service Center.

Epson Subsidiaries and Offices in Latin America

Epson Argentina S.A.

Avenida Belgrano 964/970
(1092), Buenos Aires
Argentina
Tel: (54 11) 5167-0300
Fax: (54 11) 5167-0333

Epson Colombia, Ltda.

Diagonal 109, No. 15-49
Bogotá, Colombia
Tel: (57 1) 523-5000
Fax: (57 1) 523-4180

Epson Perú, S.A.

Av. Del Parque Sur #400
San Isidro, Lima, Perú
Tel: (51 1) 224-2336
Fax: (51 1) 476-4049

Epson do Brasil, Ltda.

Av. Tucunaré, 720 Tamboré
Barueri - SP CEP 06460-020
Brazil
Tel: (55 11) 4196-6350
Fax: (55 11) 4195-5624

Epson Costa Rica, S.A

Embajada Americana,
200 Sur y 300 Oeste
San José, Costa Rica
Tel: (50 6) 210-9555
Fax: (50 6) 296-6046

Epson Venezuela, S.A.

Calle 4 con Calle 11-1
La Urbina Sur
Caracas, Venezuela
Tel: (58 212) 240-1111
Fax: (58 212) 240-1025

Epson Chile, S.A.

La Concepción 322
Providencia, Santiago
Chile
Tel: (56 2) 484-3400
Fax: (56 2) 484-3413

Epson México, S.A. de C.V.

Blvd. Manuel Ávila Camacho 389
Edificio 1 Conjunto Legaria
Col. Irrigación, C.P. 11500
México, D.F.
Tel: (52 55) 1323-2000
Fax: (52 55) 1323-2183

EPSON[®]
EXCEED YOUR VISION



410304100

CPD-20188
Printed in XXXXXX
XX.XX-XX XXX