


Macintosh OS X Software Installation

If you're using Macintosh OS X 10.2.x to 10.3.x, follow the instructions on the front of the *Start Here* sheet to set up your CX5400 and to load ink cartridges and paper. Then follow the steps below to install the CX5400 software.

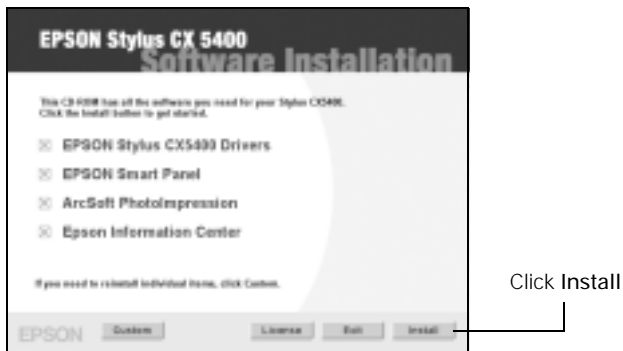
1. Insert the CX5400 *Software* CD-ROM in your computer.

Note:

The software on the CD-ROM is compatible with Macintosh OS X 10.2.x through 10.3.x.

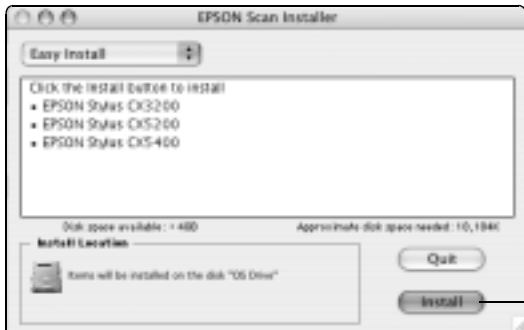
2. Double-click the EPSON CD-ROM icon on your desktop.
3. Double-click the Mac OS X folder, then double-click the  EPSON icon.
4. When you see a message about disabling your antivirus software, click Continue.
5. At the license agreement, click Agree.

6. When the Software Installation screen appears, click Install.



7. Enter your administrator password, if necessary, and click OK.

8. When you see the EPSON Scan Installer screen, click Install.



Click Install

9. After the files finish installing on your Macintosh, click Quit.
10. Follow the on-screen instructions to install the rest of the software, including EPSON Smart Panel,[™] ArcSoft PhotoImpression,[™] and the EPSON Information Center.

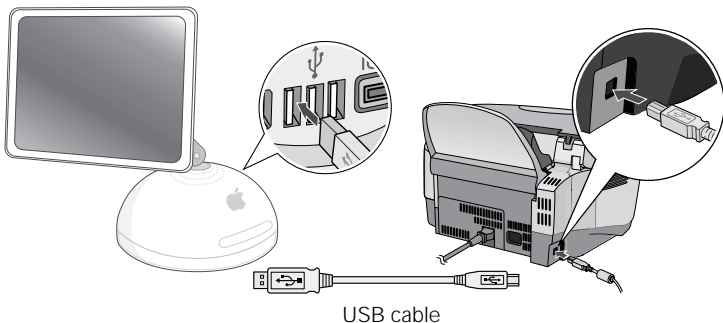
Note:

You may have to enter your administrator password before installing additional components. Click Quit, if prompted, after each installation.

11. After all the components have finished installing, click Exit.
12. When you see the Product Registration screen, register your CX5400.
13. Close any open screens, remove the CD-ROM, and restart your Macintosh to fully enable your software.

Adding the Stylus CX5400 to the Printer List

1. Make sure your CX5400 is turned on.
2. Remove the sticker from the USB port on the side of the CX5400.
3. Connect the square end of the USB cable to the CX5400, then connect the flat end to any available USB port on your Macintosh.



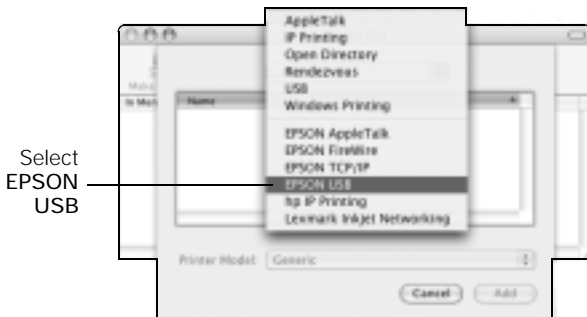
4. Open the Applications folder on your OS drive, then open the Utilities folder and start Print Center (OS 10.2.x) or the Printer Setup Utility (OS 10.3.x).

Note:

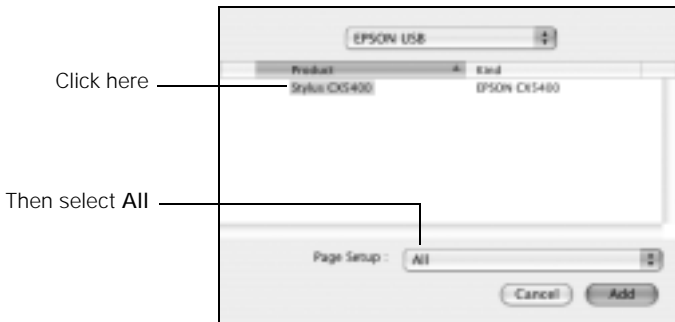
If you see this screen, click **Add**.



5. On the Printer List screen, click the Add button.
6. Open the pull-down menu at the top of the next screen and select EPSON USB.



7. Click Stylus CX5400.

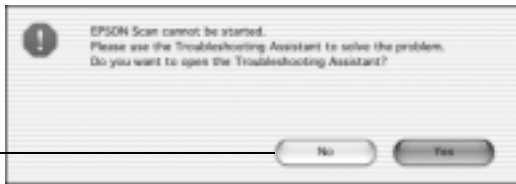


Note: If the CX5400 doesn't appear, make sure it is turned on and securely connected to your Macintosh.

8. Open the Page Setup pull-down menu at the bottom of the screen and select All.
9. Click the Add button. You see the Printer List again with the Borderless feature available.
10. Close the Printer List.

Selecting the Stylus CX5400 in EPSON Photo Print

1. Double-click the EPSON Smart Panel icon on your desktop.
2. Click Reprint Photos.
3. When you see this screen, click No.



4. Click the scanner selection box shown below, choose EPSON Stylus CX5400, then click Select.



5. Close the EPSON Photo Print screen, then close EPSON Smart Panel.

You're ready to scan, copy, and print!

If you have any problems or questions, see the back of the *Start Here* sheet for help.

EPSON and EPSON Stylus are registered trademarks and EPSON Smart Panel is a trademark of SEIKO EPSON CORPORATION.

General Notice: Other product names used herein are for identification purposes only and may be trademarks of their respective owners. EPSON disclaims any and all rights in those marks.

© 2004 by Epson America, Inc. 2/04
Printed in USA

CPD-17853