

# Start Here

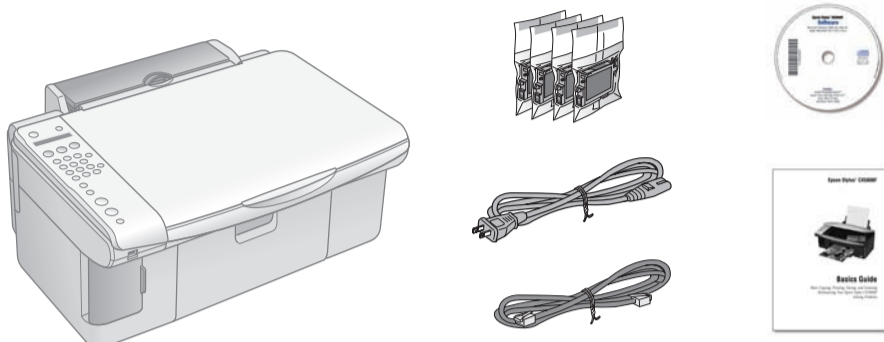
## Epson Stylus® CX5800F

---

### 1 *Unpack*

---

Remove all the tape.

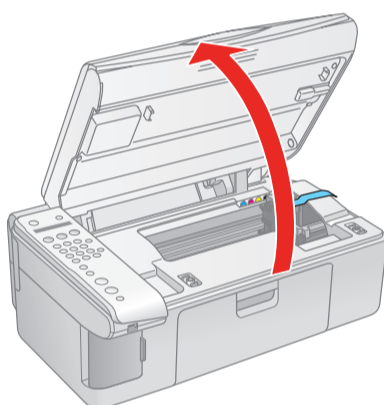


If anything is missing, contact Epson® as described on the back in "Any Questions?".

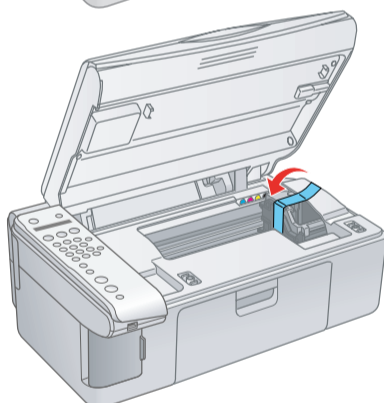
### 2 *Unlock the Printer*

---

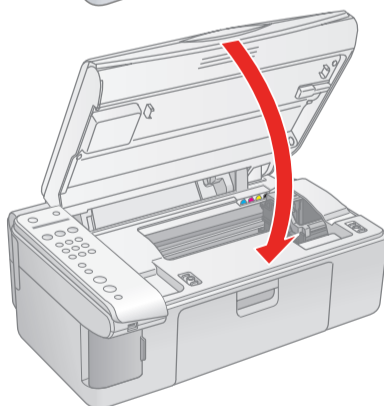
**1** Lift up the scanner.



**2** Remove the tape from the ink cartridge holder.



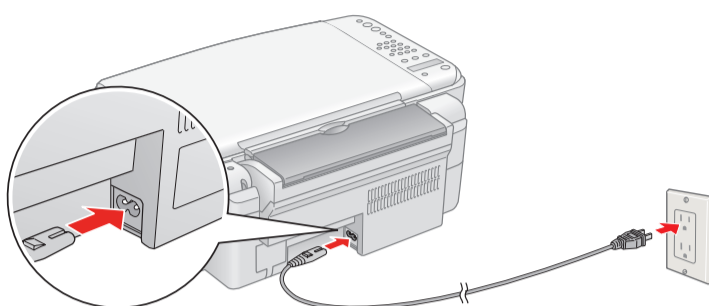
**3** Close the scanner.



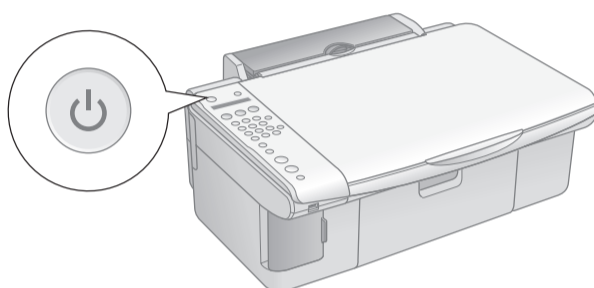
\*410409100\*

## 3 Turn On the Epson Stylus CX5800F

- 1 Connect the power cable.



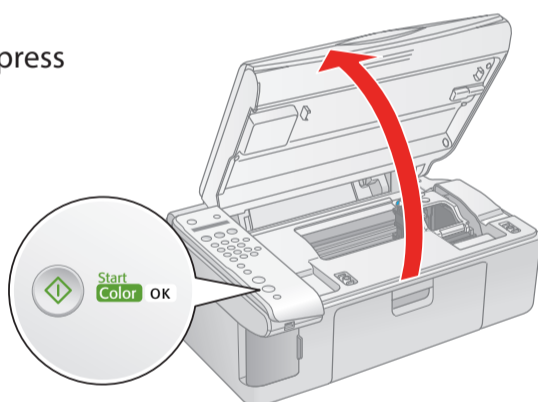
- 2 Press the  **On** button.



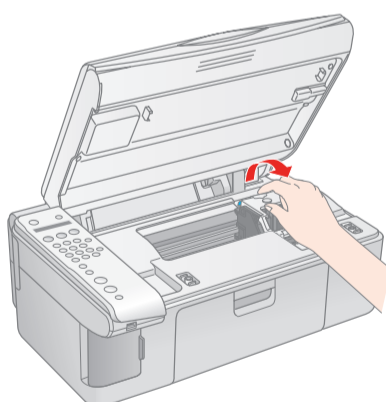
## 4 Install Ink Cartridges

**Note:** Don't load paper before installing the ink cartridges.

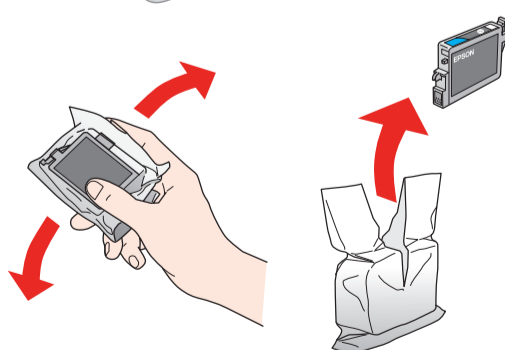
- 1 Lift up the scanner, then press the  **OK** button.



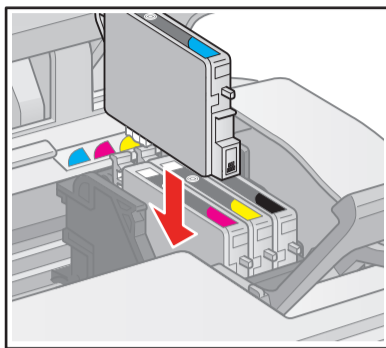
- 2 Open the ink cartridge cover.



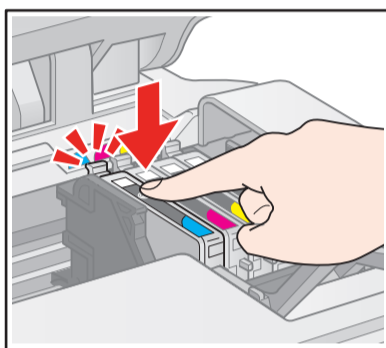
- 3 Shake the ink cartridges, then unpack them.



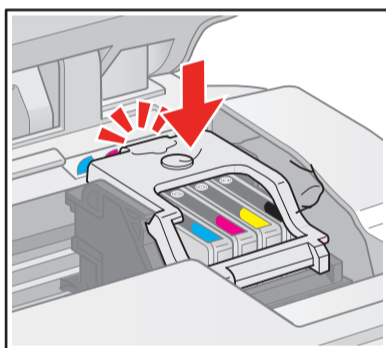
- 4 Insert the cartridges in the holder for each color.



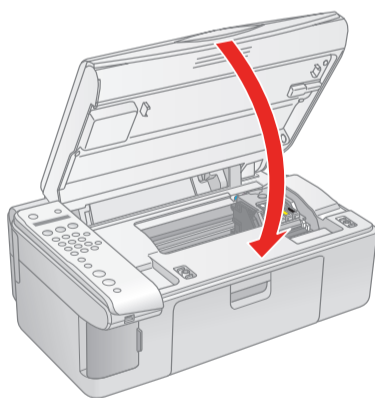
- 5 Press the cartridges down until they click.




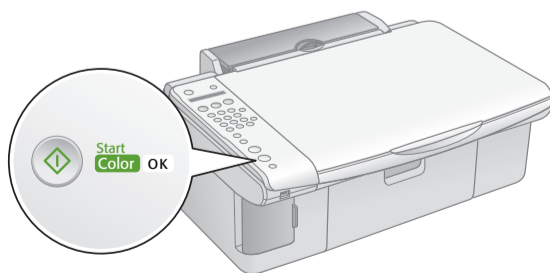
- 6 Close the ink cartridge cover and press it down until it clicks.



- 7 Close the scanner.



- 8 Press the  **OK** button to charge ink. Charging takes about 2 minutes.



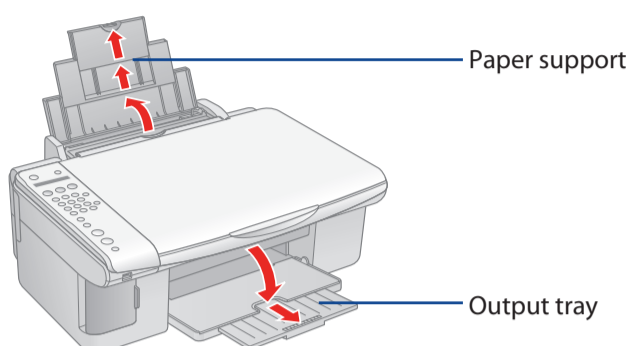
---

**Caution:** Don't turn off the Epson Stylus CX5800F while **Charging** appears on the LCD screen or you'll waste ink.

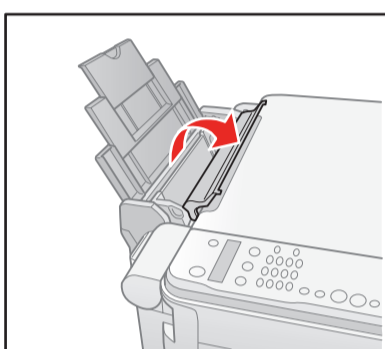
---

## 5 Load Paper

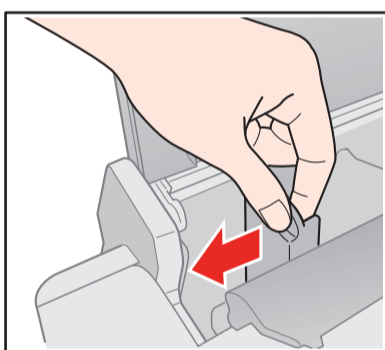
- 1 Open the paper support and pull up its extensions.
- 2 Open the output tray and pull out its extension.



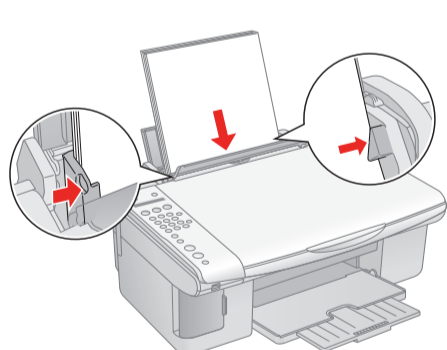
- 3 Flip the feeder guard forward.



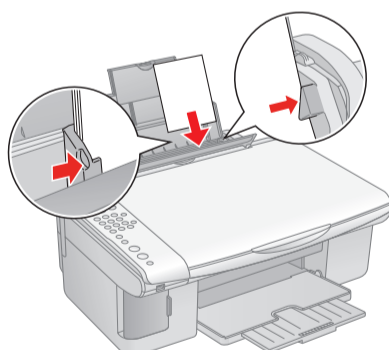
- 4 Slide the edge guide left.



- 5 Load paper against the right edge guide and slide the left edge guide over.

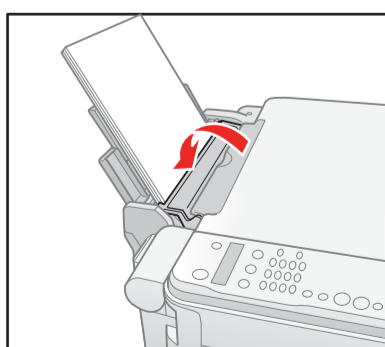


Letter size



4 x 6-inch or 5 x 7-inch

- 6 Flip the feeder guard back.



## 6 Install Software

Your software works with Windows® 98SE, Me, 2000, and XP, and Macintosh® OS X 10.2.x to OS X 10.4.x.

### Windows

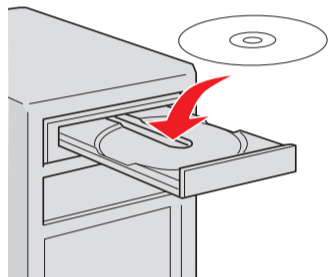
- 1 Make sure the Epson Stylus CX5800F is **NOT CONNECTED** to your computer.



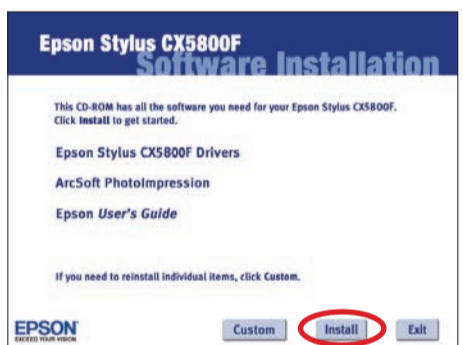
**Note:** If you see a screen like this, click **Cancel** and disconnect the USB cable. You can't install your software that way.



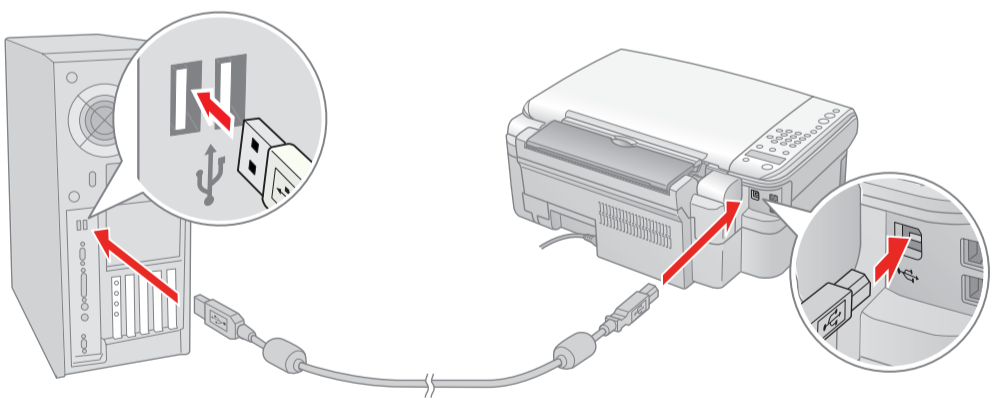
- 2 Insert the Epson Stylus CX5800F CD.



- 3 Click **Install** and follow the on-screen instructions. Software installation takes several minutes.



- 4 When prompted, connect the USB cable. Use any open USB port on your computer.



**Note:** If installation doesn't continue after a moment, make sure you securely connected and turned on the Epson Stylus CX5800F.

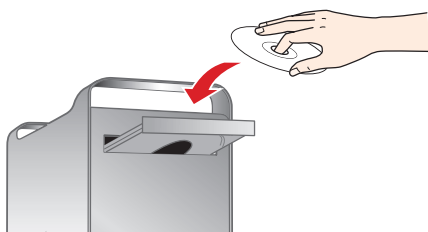
- 5 When you're done, remove the CD and restart your computer.

You're ready to copy, print, and scan! See the *Basics Guide* or your on-screen *User's Guide*.

To connect your Epson Stylus CX5800F to a phone line for faxing, see "Connect Phone Line" to the right.

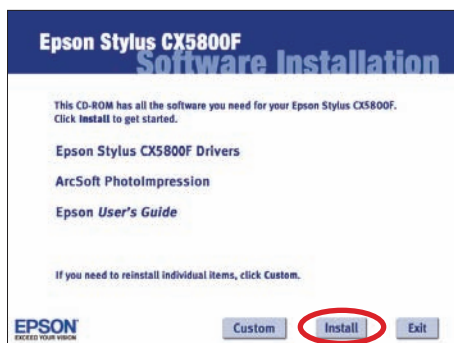
## Macintosh

- 1 Insert the Epson Stylus CX5800F CD.

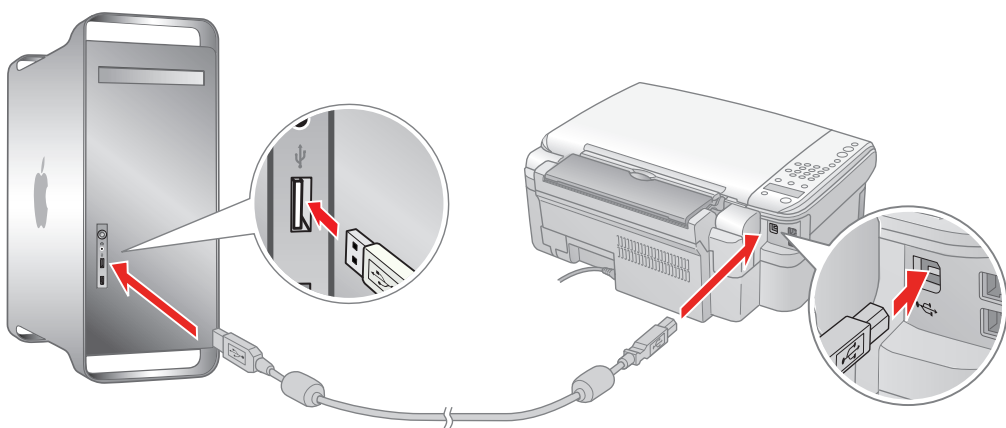


- 2 Open the **Epson** CD-ROM desktop icon and double-click the **EPSON Epson** icon.

- 3 Click **Install** and follow the on-screen instructions. Software installation takes several minutes. If necessary, close any open windows on your screen to return to the installer.

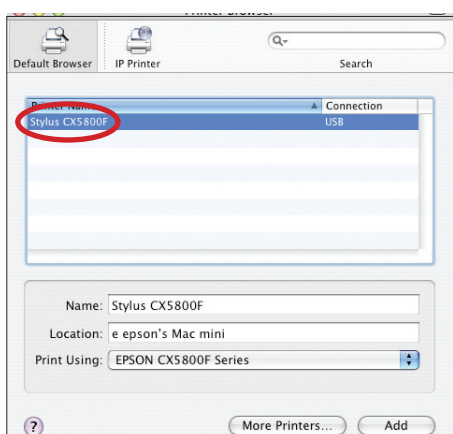


- 4 Connect the USB cable. Use any open USB port on your computer.

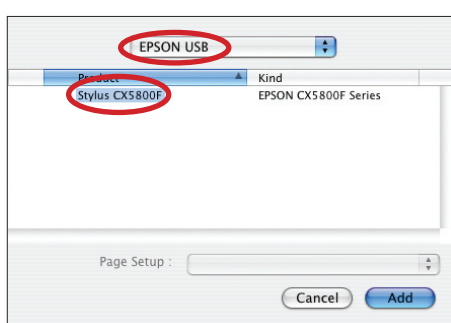


- 5 Remove the CD and restart your Macintosh.
- 6 Open the **Applications > Utilities** folder and select the **Printer Setup Utility** (OS X 10.3.x to 10.4.x) or **Print Center** (OS X 10.2.x).
- 7 Click the **Add** button.
- 8 In OS X 10.4.x, select **Stylus CX5800F**.

In OS X 10.2.x to 10.3.x, select **EPSON USB** at the top and **Stylus CX5800F** below.



Mac® OS X 10.4.x



Mac OS X 10.2.x to 10.3.x

- 9 Click **Add**.
- 10 Quit the Printer Setup Utility or Print Center.

You're ready to copy, print, and scan! See the *Basics Guide* or your on-screen *User's Guide*.

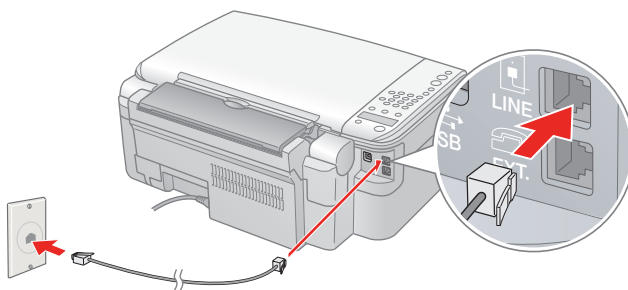
To connect your Epson Stylus CX5800F to a phone line for faxing, see the next section.

## 7 Connect Phone Line

If you are going to connect a dedicated phone line to the Epson Stylus CX5800F for faxing, connect it as shown below.

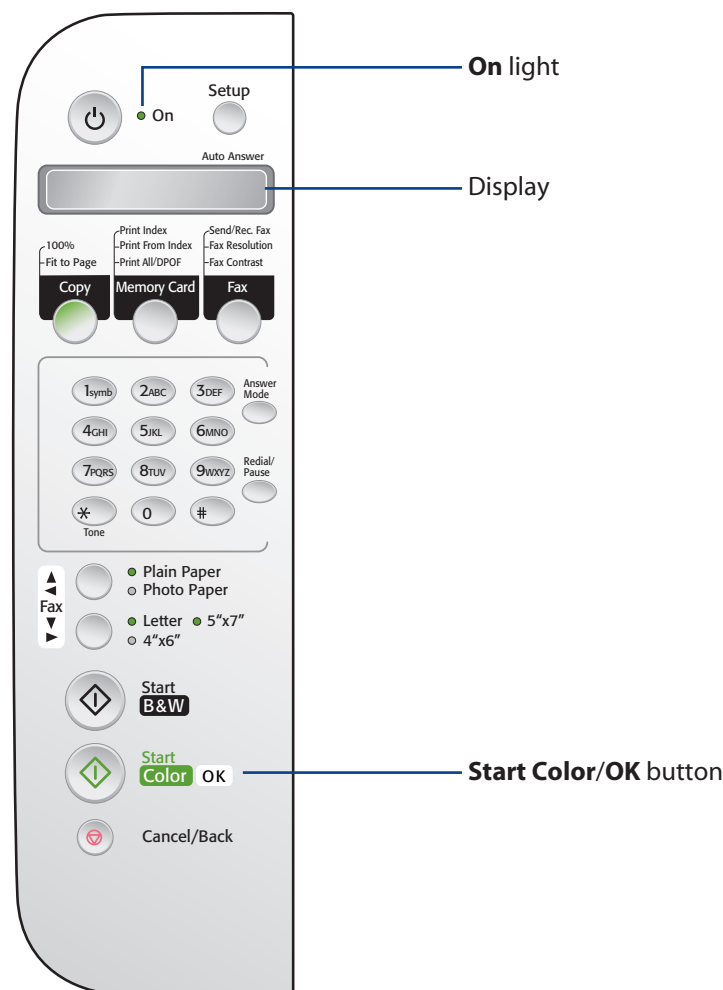
If you want to connect a telephone or answering machine, see the *Basics Guide* for instructions.

Connect the phone cable leading from your telephone wall jack to the **LINE** port on the back of the Epson Stylus CX5800F.



**Note:** If you connected the Epson Stylus CX5800F to a DSL phone line, you must install a DSL filter to the line or you won't be able to fax. Contact your DSL provider for the necessary filter.

## Any Problems?



- If the green **On** light is flashing, just wait until it stops before pressing any control panel buttons.
- If you see a **Paper out** message on the display, reload paper and press the **OK** button to continue.
- If you see a **No ink cartridge** message on the display, an ink cartridge may be installed incorrectly. Press the **OK** button, then open the scanner and push down the cartridges and cartridge cover all the way. See section 4 on the front of this sheet for instructions.
- If you see a **Paper jam** message on the display, press the **OK** button to eject the paper, then pull out the jammed sheets from the sheet feeder or output tray. See the *Basics Guide* for details.

See your *Basics Guide* and on-screen *User's Guide* for more problem-solving information.

# Any Questions?

---

Look here for answers:

## Basics Guide

Basic steps for using the Epson Stylus CX5800F.



## On-screen User's Guide

Double-click the desktop shortcut for easy access to Epson Stylus CX5800F information.

## On-screen help with your software

Select **Help** or **?** when you're using your software.

## Epson Technical Support

### ■ World Wide Web

<http://support.epson.com>

### ■ Automated Telephone Services

Call (800) 922-8911 with a touch tone telephone. Use Epson SoundAdvice<sup>SM</sup> Express Code 82710 for the Epson Stylus CX5800F.

### ■ Speak to a Technical Support Representative

Call (562) 276-4382 (U.S.) or (905) 709-3839 (Canada), 6 AM to 6 PM, Pacific Time, Monday through Friday. Toll or long distance charges may apply.

## Software Technical Support

ArcSoft PhotoImpression<sup>TM</sup>

(510) 440-9901

Web: [www.arcsoft.com](http://www.arcsoft.com)

E-mail: [support@arcsoft.com](mailto:support@arcsoft.com)

# Need Paper and Ink?

---

For the best prints, copies, and faxes, use genuine Epson ink and paper. Get them from your local store or contact Epson for dealer referral.



<b>T060120</b>	<b>T060220</b>	<b>T060320</b>	<b>T060420</b>
Black	Cyan	Magenta	Yellow



## Premium Glossy Photo Paper

Heavyweight paper with a high gloss finish for beautiful photographs in a variety of sizes, with borders or borderless.

Other fine Epson papers are available. See your *Basics Guide* for details.

Epson and Epson Stylus are registered trademarks of Seiko Epson Corporation. DURABrite is a registered trademark and SoundAdvice is a service mark of Epson America, Inc.

General Notice: Other product names used herein are for identification purposes only and may be trademarks of their respective owners. Epson disclaims any and all rights in those marks.

© 2005 Epson America, Inc. 9/05

CPD-20212R1

Printed in XXXXXX XX.XX-XX XXX