

EPSON®



Getting Started

ES-1200C *Pro Mac*

EPSON®

ES-1200C Pro Mac



Getting Started

A Note Concerning Responsible Use of Copyrighted Materials

Like photocopiers, scanners can be misused by improper copying of copyrighted material. Although Section 107 of the U.S. Copyright Act of 1976 (Title 17, United States Code), the “fair use” doctrine, permits limited copying in certain circumstances, those circumstances may not be as broad as some people assume. Unless you have the advice of a knowledgeable attorney, be responsible and respectful by not scanning published material without the permission of the copyright holder.

ES-1200C is a trademark of Epson America, Inc.

EPSON is a registered trademark of Seiko Epson Corporation.

General notice: Other product names used herein are for identification purposes only and may be trademarks of their respective companies. EPSON disclaims any and all rights in those marks.

Copyright © 1994 by Epson America, Inc.
Torrance, California, USA

Introduction

This package contains everything you need for professional quality color scanning:

- ❑ An EPSON® ES-1200C™ color scanner
- ❑ Adobe™ Photoshop™ a powerful image-editing program
- ❑ Kai's Power Tools,™ a Photoshop plug-in for editing images
- ❑ ScanTastic™ a plug-in for scanning images into Photoshop
- ❑ A SCSI system cable.

This booklet tells you how to set up your scanner, install the software, and scan a picture. If you need detailed information after you begin scanning, you can consult the individual manuals for the ES-1200C Scanner, Adobe Photoshop, Kai's Power Tools, and ScanTastic.

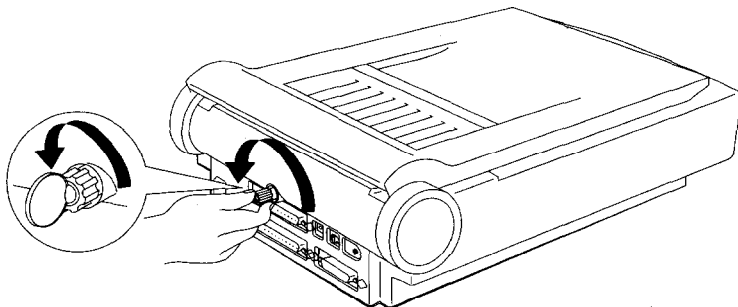
System and Memory Requirements

To install the scanner and software, you should have the following:

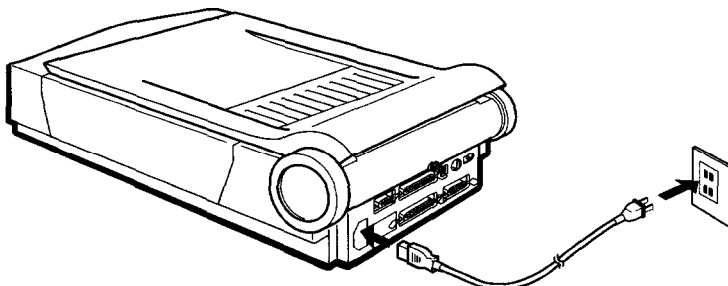
- ❑ Power Macintosh™ or a Macintosh® computer with a 68030 or 68040 processor
- ❑ Apple® system software 7.0 or higher
- ❑ 10MB or more of application RAM
- ❑ 100MB of hard disk space
- ❑ A color monitor. One with a 24-bit or 32-bit video display is recommended.

Setting Up the Scanner

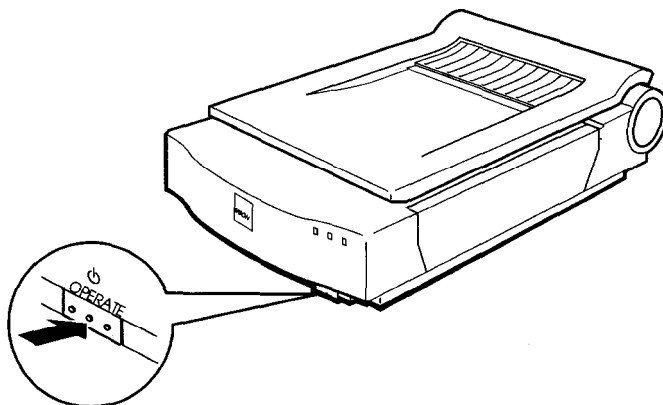
1. Take the scanner out of the box.
2. Remove the tape securing the scanner cover and pull out the cardboard from the top of the scanner.
3. Place the scanner on a flat, stable surface with its rear panel facing you.
4. Locate the round screw knob in the middle of the rear panel.
5. Turn the screw counterclockwise. If necessary, use a coin. The screw has a built-in spring, so it pops out a little when it is released. You cannot remove the screw.



6. Connect the power cable to the power inlet on the rear of the scanner and the other end into an appropriately grounded outlet as shown below.



If the scanner comes on when you plug it in, turn it off by pressing the OPERATE button.



Warning:

Whenever you turn off the scanner, wait at least 20 seconds before turning it back on. Rapidly turning it on and off can damage it.

Connecting the Scanner to Your Macintosh


Use this procedure to connect the scanner directly to the SCSI port on your computer using the SCSI cable included with the scanner. This cable has a 25-pin connector on one end and a 50-pin connector on the other.

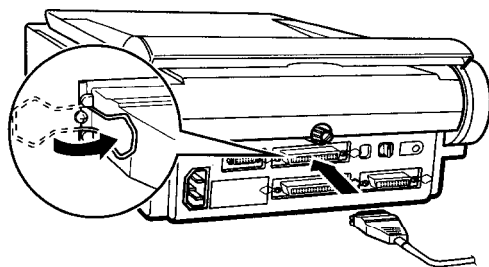
If you are already using the SCSI port on your computer for another SCSI device, such as an external hard disk, you need a SCSI cable with a 50-pin connector on both ends. You can then connect the scanner to your other SCSI device, following the instructions in Chapter 1 of your *ES-1200C User's Guide*.



Caution:

Be sure that your Macintosh, scanner, and any other SCSI devices are turned off before you plug in the cable.

1. Plug the 25-pin connector into the SCSI port on the Macintosh. This port has a  icon above it. Tighten the two screws on the sides of the connector.
2. Connect the 50-pin end of the cable to either the top or bottom SCSI connector of the scanner; then fasten the connector with the wire clamps on its side.



3. Turn on the scanner, then the Macintosh. (Always turn the scanner on before the computer.)

Installing Photoshop

Now that you have connected the scanner and the Macintosh, you can install your software.

1. Turn off any virus-protection software you are using until you finish installing the software programs. You do this by holding down the Shift key while you restart your Macintosh.
2. Insert the Photoshop Installer Disk 1 in the Macintosh and double-click the Install Adobe Photoshop icon.
3. When the initial screen appears, click OK to continue. Then follow the instructions that appear on following screens, removing and inserting diskettes as prompted.

By default, the Installer does an easy installation and installs the entire program. If you are low on disk space, you may want to do a custom installation so you specify that only certain software components be installed. See your Photoshop manual for more information.

4. When a message appears telling you that installation was successful, click Quit to exit the Installer.
5. When prompted to restart your Macintosh, hold down the Shift key and click the Restart button.

Note:

If you have SuperMatch,TM NEC[®] AccuColorTM or another monitor calibration utility installed, skip to step 7.

6. Open the Calibration folder (in the Photoshop folder) and drag the Gamma icon to the System Folder. When prompted to put Gamma in the Control Panels folder, click OK.

7. Open the Adobe Photoshop folder if it is not already open, and double-click the Adobe Photoshop icon.
8. Enter your name in the text box. If you wish, also type the name of your organization.
9. Type the serial number of the Photoshop program. You can find it on the Photoshop registration card and on one of the installation diskettes.
10. Click OK.
11. Choose Quit from the File menu in the upper left corner of the screen.

This closes Photoshop so you can install Kai's Power Tools and ScanTastic.

Installing Kai's Power Tools

1. Insert Disk 1 of the Kai's Power Tools disks and double-click the Install KPT Filters 2.0a icon.
2. A dialog box appears prompting you to open the Plug-ins folder.
3. Locate and open the Plug-ins folder in the Adobe Photoshop folder.
4. With the Plug-ins folder open, click Extract.
5. When installation is complete, eject the Kai's Power Tools diskette.

Installing ScanTastic

1. Insert the ScanTastic Installation Disk 1 into your Macintosh and double-click the ScanTastic ps Installer icon.
2. When the initial screen appears, click Continue. Read the next screen that opens and choose Continue.
3. If prompted, enter your full name, organization, and serial number (found on the diskette label and registration card).
4. Click Install to begin installation. When the next screen appears, click Yes.

A dialog box then opens the Photoshop folder and prompts you to locate the Plug-ins folder. Click once to select the Plug-ins folder. Then click the Install into "Plug-ins" button at the bottom of the dialog box.

If the Installer cannot find the Photoshop folder, open folders as needed to locate it. Then select the Plug-ins folder and click Install into "Plug-ins."

If you get a message that there is not enough room on your hard disk to install ScanTastic, do a custom installation. See your ScanTastic manual for more information.

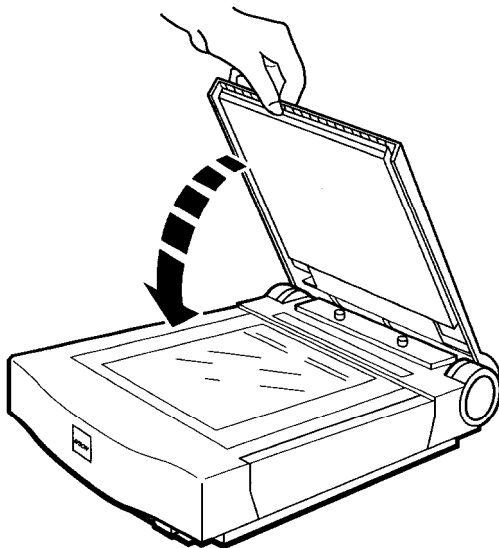
5. Insert additional diskettes, if prompted.
6. When installation is complete, you are prompted to restart your Macintosh. Click Restart.

Your First Scan

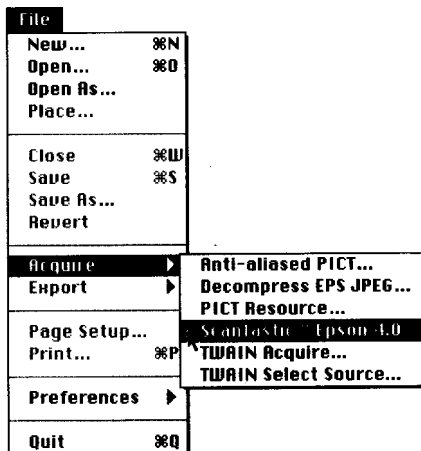
First, choose an image to scan. The best choice is a color photograph. Printed pictures, such as those in magazines, do not scan as well as photographs because of the dot patterns used in the printing process. When selecting an image to scan, respect the rights of the copyright holders. Don't scan published materials without checking the copyright status.

After you choose an image, follow these steps:

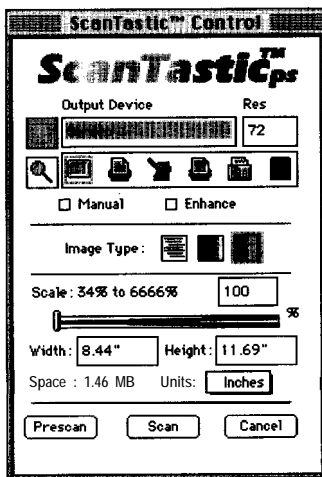
1. Turn on your scanner, then the Macintosh.
2. Double-click the Adobe Photoshop icon.
3. Raise the document cover on the scanner and place the image face down on the glass surface.
4. Carefully close the document cover so that you do not disturb the position of the photograph on the glass.



5. From the File menu in Photoshop, choose Acquire. Then choose ScanTastic. (Your menu may look slightly different than shown below.)

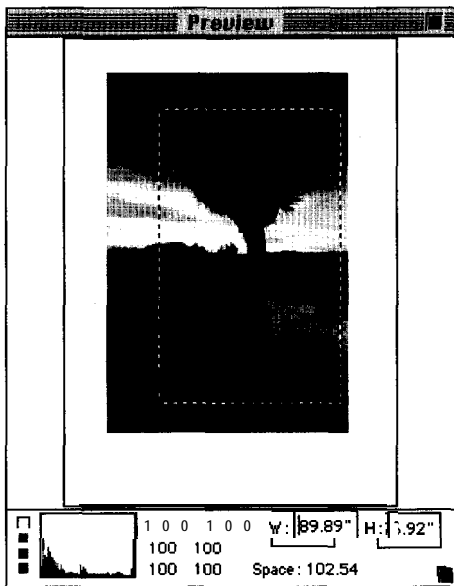


The first time you run ScanTastic, you may be prompted for your name, organization, and serial number. Enter this information and click OK. You then see the following screen:



6. Click the Prescan button.

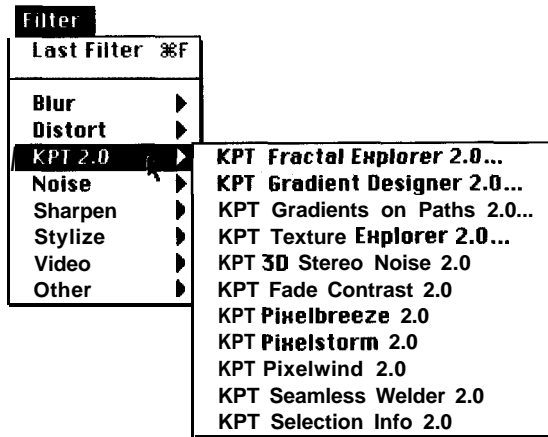
A preview of your image appears on the screen. Use your mouse to click and drag a rectangle to select the area you want to scan.



To change your selected area, move the pointer to the edge of the selection rectangle and click and drag the edge of the rectangle to a new location.

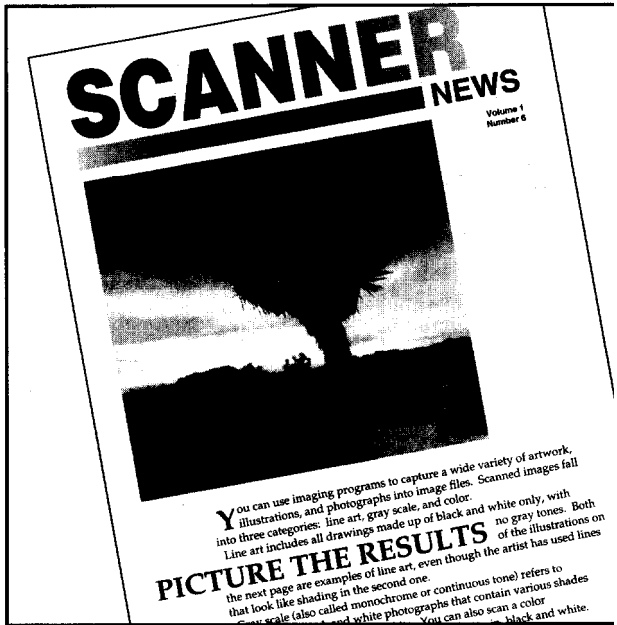
When you have defined the portion of the image on the screen that you want to scan, click the Scan button in the ScanTastic screen. In a few moments, the scanned image appears in a Photoshop window.

If you want, you can now edit the picture using any of the Photoshop features or the Kai's Power Tools (KPT) filters. Some KPT filters are in the KPT submenu of the Photoshop Filter menu.



Other KPT filters are accessible from the Blur, Distort, Noise, Sharpen, Stylize, and Video submenus.

Once the image is modified, you can save the image or print it. You can put it in a report, a newsletter, a brochure, or a business presentation. The possibilities are endless.

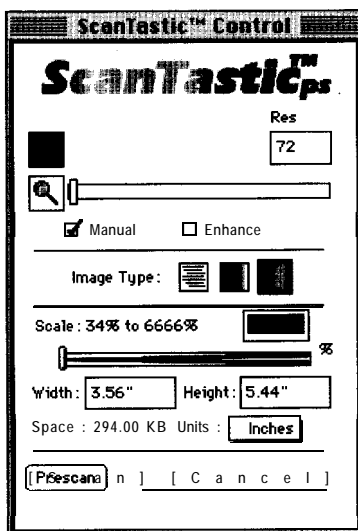


If the colors don't look right, you may need to calibrate your system. See Chapter 2 in your Photoshop manual.

Now that you know the basics, you're ready to begin your own scanning projects. If you need more information, see your scanner, Photoshop, Kai's Power Tools, and ScanTastic manuals.

Tips for Using ScanTastic

If your image is going to appear only on your screen and will not be printed, click Manual in the ScanTastic screen and set the resolution for 72, as shown below. This resolution gives you a high-quality screen image and a small file size. If you will be outputting a scanned image, you need to choose a different resolution based on the image type and final output device. See your *ES-1200C Scanner User's Guide* for more information on resolution.



Click the Enhance box to access other scanner features. See your ScanTastic manual for further information.

To shorten the time it takes to preview an image, press ⌘ and period (.) when you can see all of the area you want.

Epson America, Inc.
20770 Madrona Avenue
Torrance, California 90503

GPD20858/94