

EX100 Quick Setup

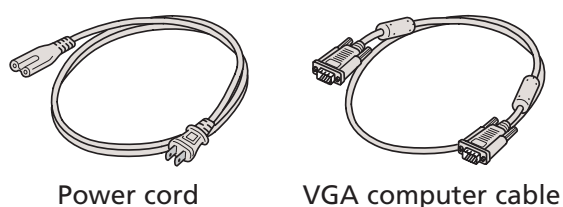


Follow these instructions to connect the projector to your notebook. For other setup options, such as using the included VGA-to-Component Video adapter, see your *User's Guide*.

Connect the projector to your notebook

Before using the projector, make sure you read the safety instructions in the *User's Guide* on your projector CD.

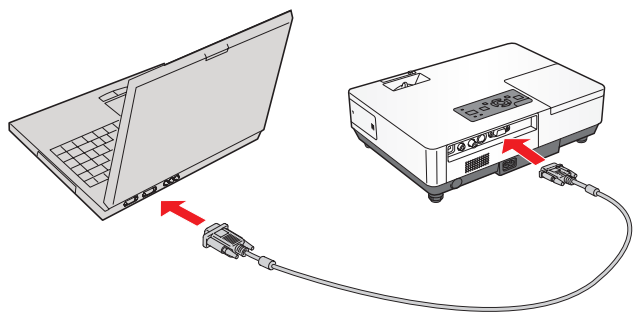
- 1 Locate the required cables:




Power cord

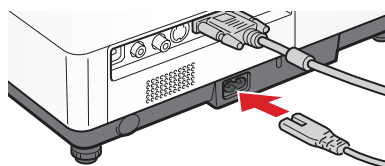
VGA computer cable

- 2 Connect the computer cable to the blue **Computer/Component Video** port on the projector.



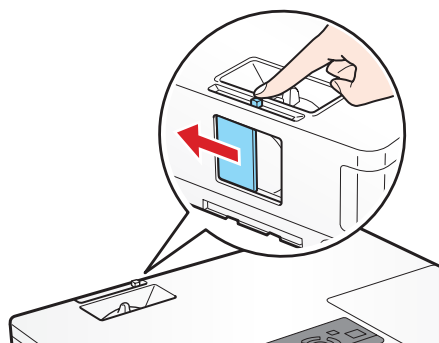
- 3 Connect the other end to your notebook's video-out or  monitor port.

- 4 Connect the power cord to the projector, then plug the other end into an electrical outlet.



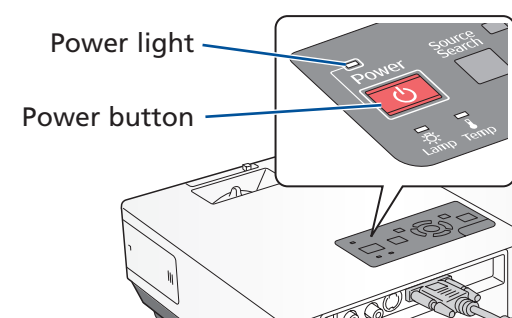
Turn on your equipment

- 1 Turn on your notebook.
- 2 Open the **A/V Mute** slide (lens cover).



NOTE: The slide must be opened completely.


- 3 Make sure the **Power** light is orange and not flashing.



- 4 Press the  **Power** button to turn on the projector.

CAUTION: Before unplugging the projector...

Shut down the projector properly:

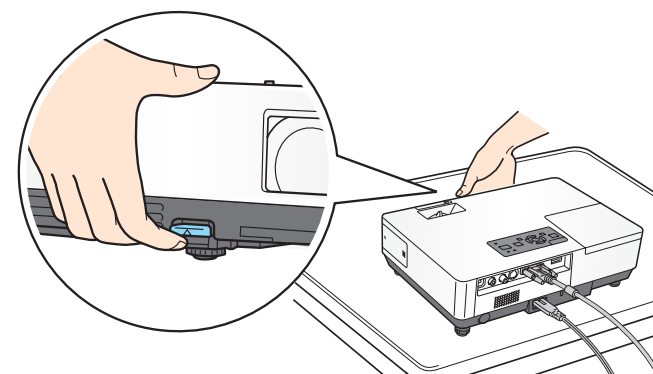
1. Press the  **Power** button twice.
2. When the orange light stops flashing and the projector beeps, you can unplug the projector.

Adjust the image

- 1 If you've turned on your notebook and you don't see an image, press the **Source Search** button on the projector or remote control to select the image source.

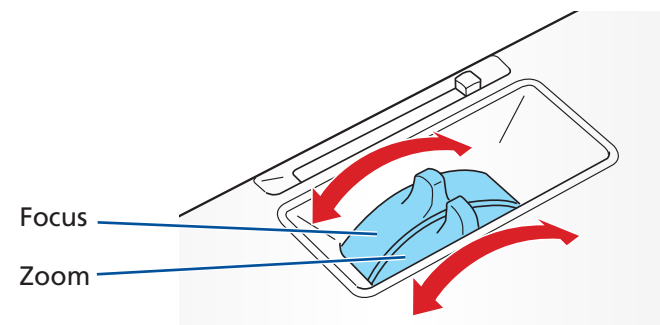
NOTE: If you still see a blank screen or have other display problems, see the troubleshooting tips on the back of this sheet.


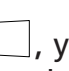
- 2 To raise the image, press the blue foot release button for the front adjustable foot and lift the front. Release the button to lock the foot in position.


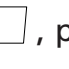
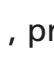
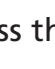


- 3 Turn the focus ring to sharpen the image.

Turn the zoom ring to reduce or enlarge the image.



- 4 If your image looks like  or , you've placed the projector off to one side of the screen at an angle. Place it directly in front of the center of the screen, facing the screen squarely.

- 5 If your image looks like  or , press the  or  buttons on the projector to correct it.

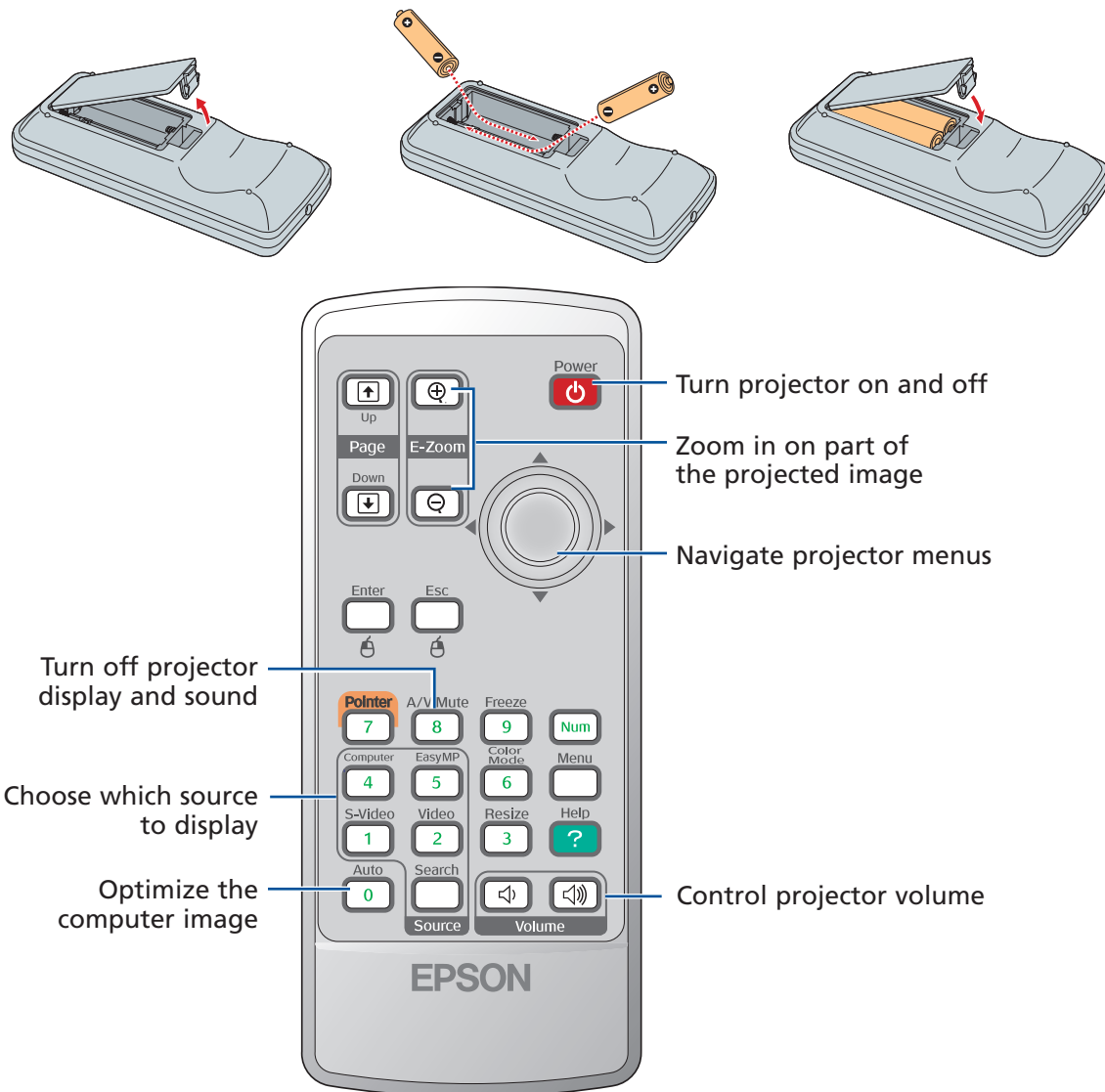


411491900

Turn over.....➔

Using the remote control

If this is your first time using the remote, make sure its batteries are installed as shown (two AAA batteries).



You can use the remote control to operate the projector. With the USB cable, you can use the remote as a wireless mouse. For more information on using the remote control, see your *User's Guide*.

Where to get help

For more information about using the projector, install the *User's Guide* from your projector CD.

Telephone Support Services

To use the Epson PrivateLine® Support service, call (800) 637-7661 and enter the PIN on the Epson PrivateLine Support card included with your projector. This service is available 6 AM to 6 PM, Pacific Time, Monday through Friday, for the duration of your warranty period. You may also speak with a projector support specialist by dialing one of these numbers:

- U.S.:** (562) 276-4394, 6 AM to 6 PM, Pacific Time, Monday through Friday
- Canada:** (905) 709-3839, 6 AM to 6 PM, Pacific Time, Monday through Friday

Days and hours of support are subject to change without notice. Toll or long distance charges may apply.

Internet Support

Visit Epson's support website at [epson.com/support](http://www.epson.com/support) and select your product for solutions to common problems. You can download utilities and documentation, get FAQs and troubleshooting advice, or e-mail Epson with your questions.

Visit <http://www.presentersonline.com> to access tips, templates, and training for developing successful presentations.

Troubleshooting

If you see a blank screen...

If you see a blank screen or the **No signal** message after turning on your notebook, check the following:

- Make sure the **Power** light on the projector is green and not flashing, and the **A/V Mute** slide is open.
- Press the **Source Search** button on the projector or the remote control to select the computer as the image source.
- If you're using a Windows® notebook, press the function key on your keyboard that lets you display on an external monitor. It may be labelled **CRT/LCD** or have an icon such as . You may have to hold down the **Fn** key while pressing it. Allow a few seconds for the projector to sync up after changing the setting.

If the projector and notebook don't display the same image...

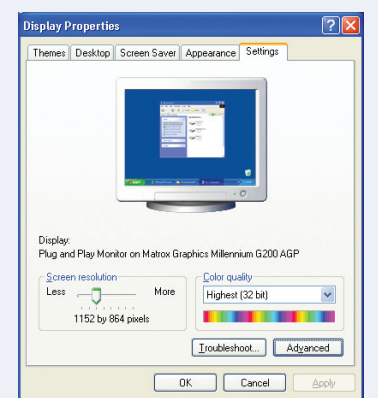
If your image displays either on the projector or notebook, but not on both, follow the steps below. Note that some notebooks cannot display the same resolution and/or aspect ratio on both the LCD screen and the projected image.

Windows

Try using the **CRT/LCD** or key as described above. On most systems, this key lets you toggle between the LCD screen and the projector, or display on both at the same time.

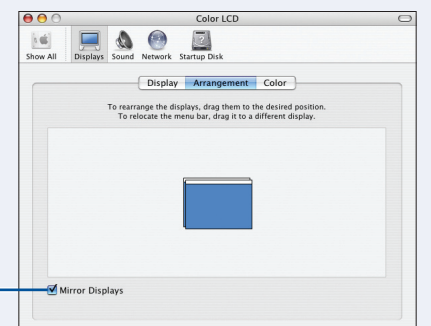
If that doesn't work, check your monitor settings to make sure both the LCD screen and the external monitor port are enabled.

1. From the Windows Control Panel, open the **Display** utility. In Windows Vista®, right-click on the desktop and select **Personalize**, then select **Display Settings**.
2. In the Display Properties dialog box, click the **Settings** tab, then click **Advanced**. In Windows Vista, click **Advanced Settings**.
3. The method for adjusting the setting varies; you may have to click a **Monitor** tab, then make sure the external Monitor port is set as your primary display and/or enabled. See your notebook's manual or online help for details.



Mac OS® X

1. From the Apple® menu, select **System Preferences**, then select **Display** or **Displays**.
2. Click **Detect Displays**.
3. Make sure the **VGA Display** or **Color LCD** dialog box is selected.
4. Click the **Arrangement** or **Arrange** tab, then make sure the **Mirror Displays** checkbox is selected.



EPSON
EXCEED YOUR VISION



Epson is a registered trademark and Epson Exceed Your Vision is a registered logomark of Seiko Epson Corporation. PrivateLine is a registered trademark of Epson America, Inc.

General Notice: Other product names used herein are for identification purposes only and may be trademarks of their respective owners. Epson disclaims any and all rights in those marks.

This information is subject to change without notice.

© 2008 Epson America, Inc. 5/08
Printed in XXXXXX

Register today to get product updates, special promotions, and customer-only offers. You can use the registration card or CD included with your projector, or register online at www.epson.com/webreg.