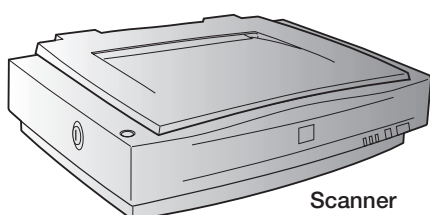


Start Here

EPSON Expression® 1640XL

1 Unpack Your Scanner

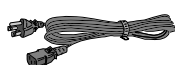
- 1 Remove everything from the box.



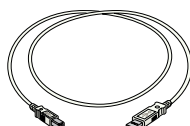
Scanner



User's Guide



Power cord



USB cable



Scanner Software
CD-ROM



Adobe®
Photoshop®
Elements
CD-ROM



ArcSoft® Suite
CD-ROM



Monaco™
EZcolor 2.5
CD-ROM



LaserSoft® SilverFast® Ai 6 CD-ROM with IT8 targets
(1640XL Graphic Arts Edition only)

- 2 Remove all of the tape and packing material inside and around the scanner. Check carefully that you have removed all the tape.

2 Install the Software

Windows®

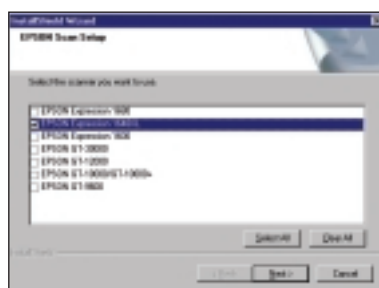
- 1 Insert the **Scanner Software CD-ROM** in your CD-ROM or DVD drive. The EPSON® Installation Program window appears.



- 2 Select **Install Software**, and then click the  **Install** button.

- 3 Click **Install**.

- 4 Read the license agreement, and then click **Accept**. The following window appears.



- 5 Uncheck everything but **EPSON Expression 1640XL**, and then click **Next**. The installation completes.

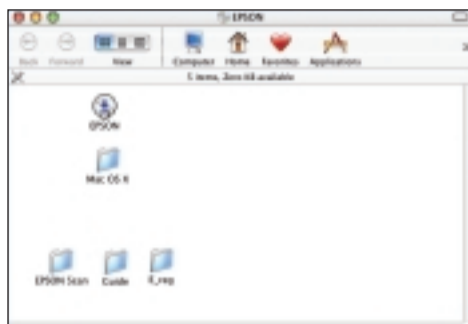
- 6 Double-click **Register Your Scanner** in the EPSON Installation Program window and follow the instructions.

- 7 Close the EPSON Installation Program window and remove the CD-ROM.

Macintosh® OS X

1 Insert the **Scanner Software CD-ROM** in your CD-ROM or DVD drive.

2 Double-click the **EPSON** icon on the desktop. The following window appears.

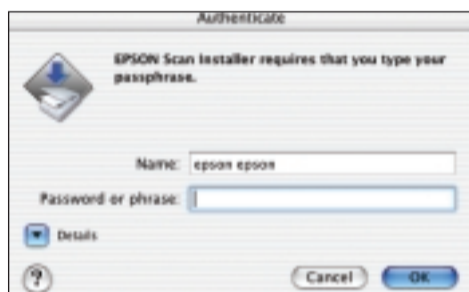


3 Open the **Mac OS X** folder.

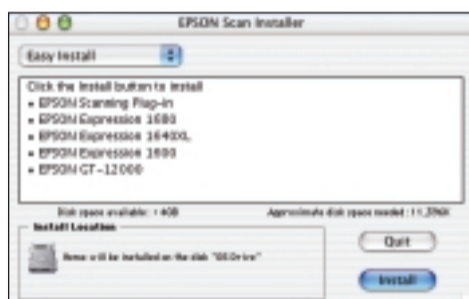
4 Open the **English** folder.

5 Double-click **EPSON Scan Installer**.

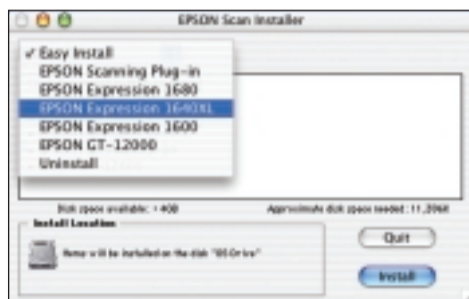
6 In the Authenticate dialog box, type your name and password and click **OK**.



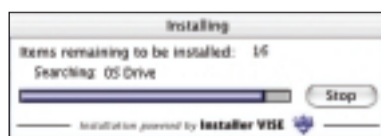
7 Read the license agreement, and then click **Accept**. The **EPSON Scan Installer** window appears.



8 Click **Easy Install**, and then select **EPSON Expression 1640XL** from the list.



9 Click **Install**. The installation begins.



10 When installation is complete, click **Quit**, and close the installer.

11 Register your scanner. Open the **E_reg** folder in the **Scanner Software CD-ROM**, double-click **EpsonReg**, and follow the instructions.

12 Remove the CD-ROM and restart the computer.

Macintosh OS 9.x

- 1 Insert the **EPSON Scan** CD-ROM in your CD-ROM or DVD drive.
- 2 Double-click the **EPSON** icon on the desktop. The following window appears.



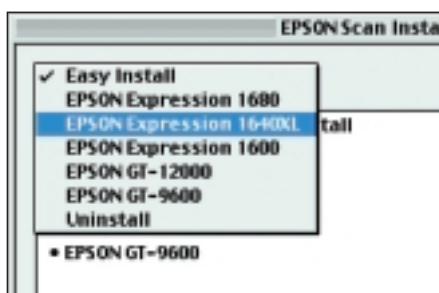
- 3 Double-click the **EPSON** icon. The EPSON Installation Program window appears.



- 4 Select **Install Software**, and then click the **Install** button.
- 5 Read the license agreement, and then click **Accept**. The EPSON Scan Installer window appears.



- 6 Click **Easy Install**, and then click **EPSON Expression 1640XL** from the list.




- 7 Click **Install**. The installation begins.

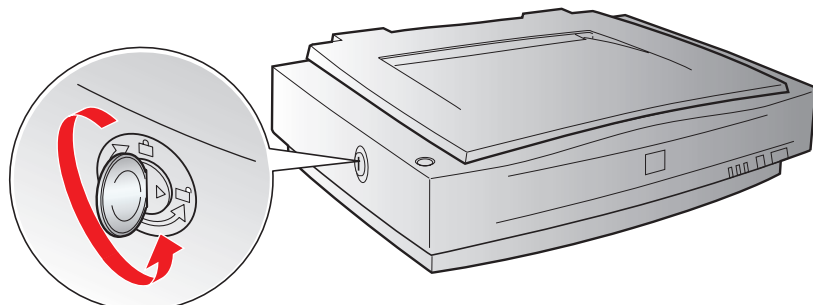


- 8 When the installation is complete, click **Quit**.
- 9 Double-click **Register Your scanner** in the EPSON Installation Program window and follow the instructions.
- 10 Close the EPSON Installation Program window and remove the CD-ROM.

3



Connect the Scanner

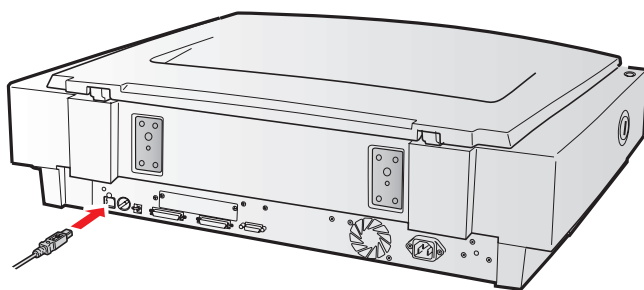
- 1 Use a coin to turn the transportation lock counterclockwise to the  unlocked position.



- 2 Connect the scanner to your computer.

If you're using USB...

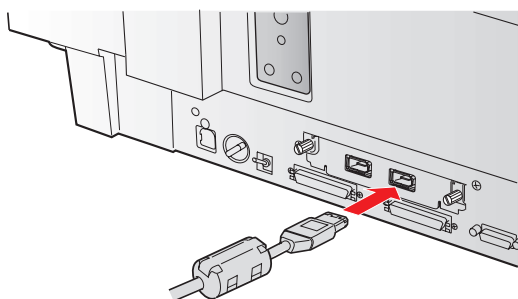
Plug the  square end of the USB cable into the scanner's USB port. Then plug the  wide end into any available USB port on your computer or USB hub.



If you're using IEEE 1394 (FireWire®)...

If you are using the optional FireWire interface, you must first install the interface card in the scanner. See the instructions in the *User's Guide*, and then return to this step.

Plug one end of the IEEE 1394 cable (not included) into the scanner's IEEE 1394 port. Then plug the other end into the IEEE 1394 port on your computer.

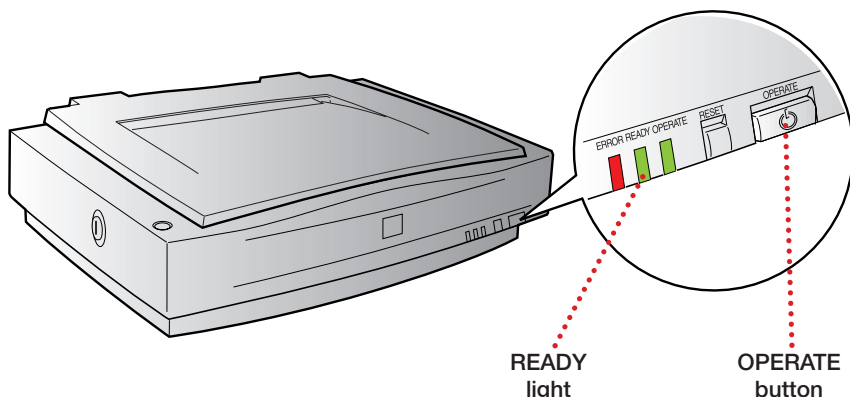


If you're using SCSI...

See the *User's Guide* for instructions on SCSI connection, and then go to the next step.

- 3 Plug the scanner's power cord into the back of the scanner. Then plug the cord into a grounded electrical outlet.

- 4 Press the  **OPERATE** button on the front of the scanner to turn it on. The green **READY** light should blink for a few moments, and then stay on.



Caution: If you turn off the scanner, wait at least 10 seconds before turning it back on.

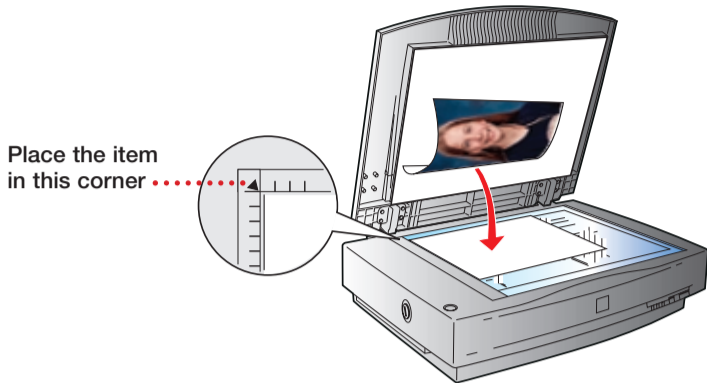
Turn over.....➔


Scanner Basics

Your First Scan

When you follow these steps, your scanner software recognizes the type of image you're scanning and adjusts settings for optimum scan quality.

- 1 Raise the scanner lid and place the item face down on the glass.



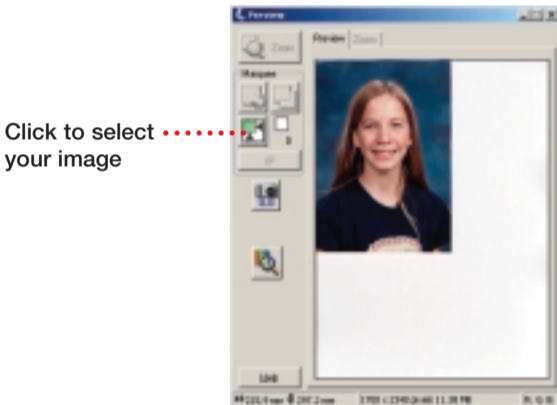
- 2 Start EPSON Scan. You can press the scanner's green  Start button (Windows), or do one of the following:


Windows: Click **Start > Programs or All Programs > EPSON Scan > EPSON Scan**.


Mac OS 9.x: Select **EPSON Scan** from the Apple® menu.

Mac OS X: Double-click the **EPSON Scan** icon in the Applications folder.

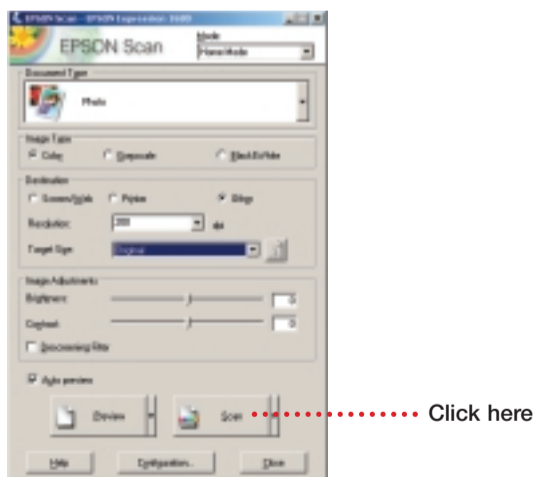
EPSON Scan starts, prescans, and recognizes the type of image you placed on the scanner.



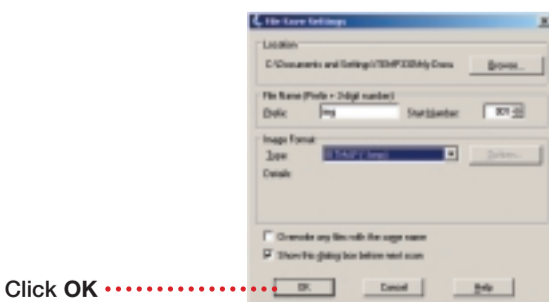
- 3 Click the  tool to the left of your preview to automatically select your image.

Note: If the scanned image in the Preview window has a blue box around it, you're previewing in thumbnail mode and won't be able to use the  tool. Click the arrow beside the **Preview** button and select **Normal** from the pull-down menu. Then click the **Preview** button to preview in normal mode.

- 4 Click the **Scan** button.



The File Save Settings window appears.

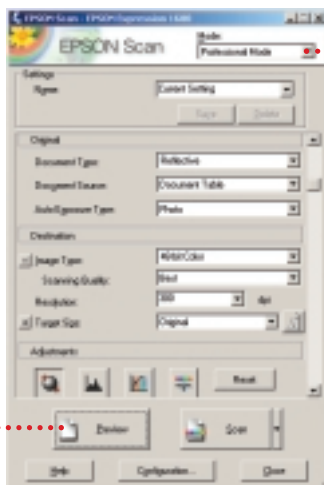


- 5 Click **OK** to save your scanned image to the default location on your hard drive, or browse to a new location.

EPSON Scan assigns sequential numbers to each scanned image, and saves it to the location specified.


Customizing Your Scan

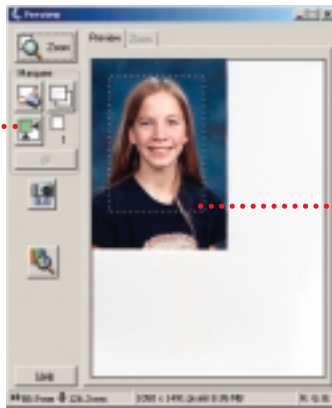
- 1 Place your photo face down on the scanner glass. Then start EPSON Scan, as described in “Your First Scan.”
- 2 Select **Professional Mode** from the Mode drop-down list.



Select Professional Mode


Then click here

- 3 Click the **Preview** button to preview your scan.
- 4 Click the  tool on the Preview window to select your image, or click and drag to select part of the image.



Click to select the entire image

Or click and drag to select part of the image

- 5 Select your Image Type and Scanning Quality.
- 6 Select the Resolution.
Tip: Unless you plan to enlarge your image, 300 dpi is recommended. Higher resolutions increase the file size and the time it takes to print your image.
- 7 For Target Size, select the size of your printed output, or select **Original** if you want your printout to match the size of your scan.
Tip: If you don't see the output size you want, select **Customize** and enter a width and height in the dialog box that appears. You can name and save this setting for future use.
- 8 Click the  button to optimize your image's exposure. This button automatically sets gamma, highlight, and shadow settings.
- 9 Click the **Scan** button, then click **OK** on the File Save Settings window.

Scanning With Photoshop

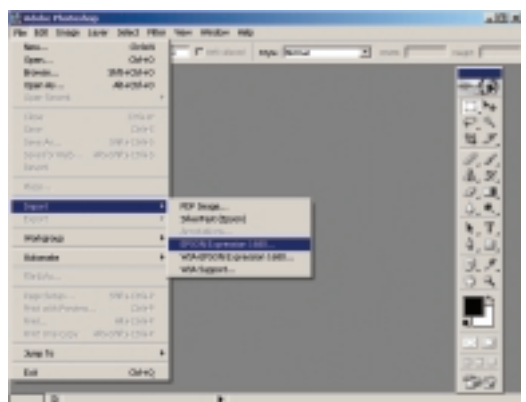
You can also import your scanned image into Adobe Photoshop, Photoshop Elements, or another TWAIN-compliant application. You can use the tools in these applications to modify the image before you save or print it.

- 1 Place your photo face down on the scanner glass. Then start Adobe Photoshop or Photoshop Elements.
- 2 Select **File > Import > EPSON Expression 1640XL**.

EPSON Scan starts and prescans your image.

Note: If you don't like the preview, you can use EPSON Scan to fine-tune the image before scanning.


- 3 Click the **Scan** button. Your scanner software scans the image and opens it in Photoshop or Photoshop Elements.

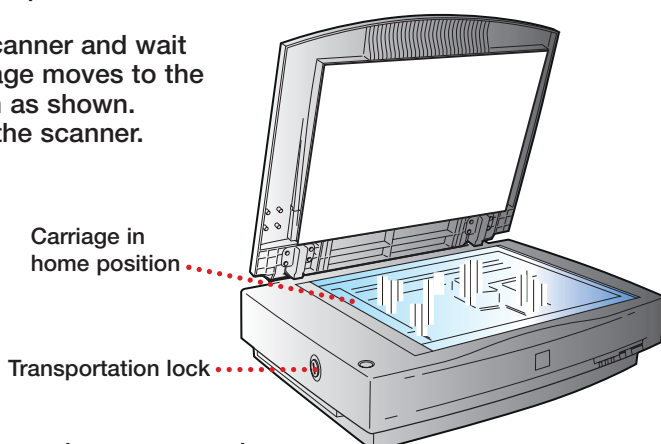


- 4 Close EPSON Scan. Then make any changes you want with the Photoshop software.

Transporting the Scanner

To move or transport the scanner safely, it's important to secure the carriage.

- 1** Make sure the transportation lock on the back of the scanner is in the  unlocked position.
- 2** If you're using a transparency unit or automatic document feeder, remove it and replace the scanner cover.
- 3** Turn on the scanner and wait until the carriage moves to the home position as shown. Then turn off the scanner.



- 4** Use a coin to turn the transportation lock to the  locked position.

Questions?

Here's where to look for answers:

User's Guide

Use your hard-copy *User's Guide* to get more information about using EPSON Scan, solving problems, and maintaining your scanner.

On-screen Help for EPSON Scan

Click the **Help** button or question mark that appears on the screen when you're using EPSON Scan.

Online Reference Guide

Install this guide from the **Scanner Software CD-ROM**.

Windows

- 1** Insert the **Scanner Software CD-ROM** in the drive. The EPSON Installation Program window appears.
- 2** Double-click **Install Online Reference Guide**. The reference guide will be installed.
- 3** Close the EPSON Installation Program window and remove the CD-ROM.

Mac OS X

- 1** Insert the **Scanner Software CD-ROM** in the drive, and then open its window on the desktop.
- 2** Open the **Mac OS X** folder and double-click **Install Online Reference Guide**. The reference guide will be installed.
- 3** Remove the CD-ROM.

Mac 9.x

- 1** Insert the **Scanner Software CD-ROM** in the drive, and then open its window on the desktop.
- 2** Double-click the **EPSON** icon in the window, and then double-click **Install Online Reference Guide**. The reference guide will be installed.
- 3** Close the EPSON Installation Program window and remove the CD-ROM.

To open the reference guide

Double-click the **Exp1640XL Reference Guide** icon on the desktop.

EPSON Technical Support

EPSON provides technical assistance 24 hours a day through the electronic support services and automated telephone services described below:






- **World Wide Web**
From the Internet, you can reach EPSON Support at <http://support.epson.com>.
- **Automated Telephone Services**
To use Automated Telephone Services, you must have a touch tone telephone and call (800) 922-8911. Your EPSON SoundAdviceSM Express Code is 65200. Use it to quickly select your scanner in SoundAdvice.
- **To Speak to a Technical Support Representative**
Dial (562) 276-4382 (U.S.) or (905) 709-3839 (Canada), 6 AM to 6 PM, Pacific Time, Monday through Friday. Toll or long distance charges may apply.

To purchase optional accessories

You can purchase a variety of optional accessories, including a transparency unit for scanning film and slides, an automatic document feeder for scanning multi-page documents, and an IEEE-1394 FireWire card for FireWire connectivity. Just call the EPSON StoreSM at (800) 873-7766, or visit our web site at www.epsonstore.com (U.S. sales only). In Canada, please call (800) 463-7766 for dealer referral.

Problems?

First, check the lights on the scanner.

READY		Flashing green	Warming up or scanning.
READY		Green	Ready to scan.
ERROR		Flashing red	Make sure that the transportation lock is set to the  unlocked position and the scanner is securely connected to your computer. Try restarting your computer and turning the scanner off and then on again. If the ERROR light is still flashing, contact your dealer or EPSON.
READY		Off	Make sure your scanner is plugged in to a working outlet and turned on.

If your problem is listed here, try these suggestions. For more information, see your software Help or your *User's Guide*.

The New Hardware Wizard appears on your screen.

If you have not yet installed the software, click **Cancel** and disconnect the scanner. Follow the steps on the other side of this sheet.

You see an error message that EPSON Scan cannot be started.

Make sure your scanner is on. If it was off, turn the scanner on first, then restart your computer before you try to scan.


Make sure the scanner's power plug is connected to a working outlet.

Wait until the green READY light stops flashing and remains on, then try again.

Make sure your cable is securely connected. If you have a USB connection, use the USB cable that came with the scanner.

If you're using a USB hub, connect the scanner directly to one of the USB ports on your computer.

The scanner doesn't scan your image.

Make sure the transportation lock is in the  unlocked position.

If you're using a SCSI connection, make sure the SCSI ID switch on the back of the scanner is not set to the asterisk (*). Make sure it's set to a number that doesn't conflict with any other SCSI devices. If you reset the SCSI ID switch, turn the scanner off and then on again.

If you're importing your image into a TWAIN-compliant application like Photoshop, make sure you select **EPSON Expression 1640XL** as your import source.

An error message says the selected area is too large for this resolution.

Close any programs you don't need. Also, try scanning at a lower resolution, or select part of the image to scan. If you're running Mac OS 8.6 to 9.x, increase the memory of your host application.

The printed image doesn't look the same as the original.

If the scanner glass is smudged or dusty, turn the scanner off and unplug the power cord. Wipe the glass with a soft, dry cloth.

If your original document is dirty or wrinkled, it will show up in your scan. If the document is not aligned correctly (see "Your First Scan"), straight lines may come out jagged, or your printed image may look crooked.

Try printing a test page to make sure your printer is operating correctly.

Because your monitor and printer use different color technologies, your printed colors can't match the colors on your screen exactly.

The printed image is larger or smaller than the original.

You can't judge the size of the printed image by what you see on your screen. The Target Size setting in EPSON Scan, or the image size setting in Photoshop or other TWAIN-compliant software, determines the size of the printed image.

EPSON is a registered trademark of SEIKO EPSON CORPORATION. EPSON Expression is a registered trademark, and EPSON Store and SoundAdvice are service marks of Epson America, Inc.

General Notice: Other product names are for identification purposes only and may be trademarks of their respective owners. EPSON disclaims any and all rights in those marks.

© 2003 by Epson America, Inc. 11/03

Printed in USA

CPD-17255