

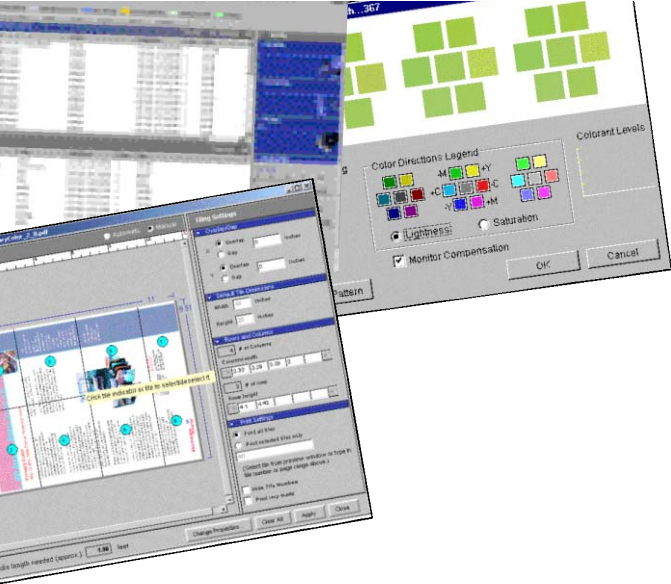
EFI Fiery Spark™

Professional 2.0

Fast. Simple. Accurate.

Product Features

- True Adobe PostScript 3 RIP Server – fully ready for a PDF workflow
- High-performance software RIP
- Simultaneous Macintosh and Windows compatibility
- Professional level job management – Command Workstation 4
- Professional level color management system – ColorWise Pro Tools 3
- Fully ICC and Apple® ColorSync® compatible
- EPSON AcuPhoto Halftoning® technology
- Unlimited, fully-configurable hot folders
- Job load balancing among multiple Fiery printing systems
- Color accurate job previewing
- Visual job nesting
- Visual job tiling
- Job (PPD) settings override capability
- Custom media support
- Complete Fiery web tools
- Easily upgradeable

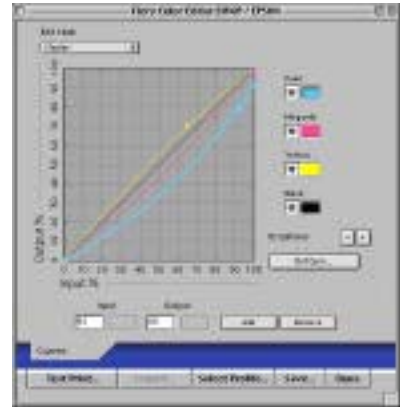


Fiery Spark Professional 2.0

ColorWise® Pro Tools 3

In addition to accurately simulating the output of other printing devices, EFI's color management software provides the tools to help users achieve the highest quality color possible on Epson's latest print engines.

Users can employ the Fiery Profile Manager to download ICC sources, simulations or output profiles for complete control over source color space, press simulation, or printer output. The Color Editor lets them edit simulations and output profiles to fine-tune their color.



Color Editor dialog box

The EFI Fiery Spark Professional 2.0 Software RIP – Bringing superior PostScript quality and performance to any compatible EPSON Stylus® Pro printer*

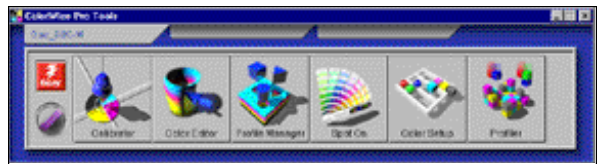
Introducing EFI's next generation of high-performance software RIPs – the Fiery Spark Professional 2.0. Designed to transform virtually any Windows® 2000 Intel-based computer into a dedicated Adobe® PostScript® 3 RIP, Fiery Spark Professional 2.0 represents a powerful printing solution for the EPSON Stylus Pro 7600, 9600, 10000 or 10600 print engine. Supporting both Macintosh® and Windows workstations and networks simultaneously, Fiery Spark Professional 2.0 will give any team the flexibility to remain both efficient and highly productive.

Utilizing EFI's Command Workstation 4, users can manage all their critical jobs from one central location. They can even re-print previous jobs without having to relocate the original application files! With Fiery visual tiling, Command Workstation 4 enables users to create large posters the size of a building, or print multiple jobs on a single page. Whatever the job, file type, computer or network used, Fiery Spark Professional 2.0 has the team covered.

Advanced color management features include complete color profile management and adjustment tools, and EFI's Spot On spot color matching system for creating, matching, and managing spot colors. Fiery ColorWise Pro Tools 3 can easily be configured to handle any RGB or CMYK color workflow.

Designed for the most demanding advertising agencies, print providers, corporate marketing departments, commercial printers, pre-press proofing departments, and even design studios just starting out, the EFI Fiery Spark Professional 2.0 Software RIP is the most powerful Adobe PostScript 3 RIP solution available for Epson's latest print engine technologies.

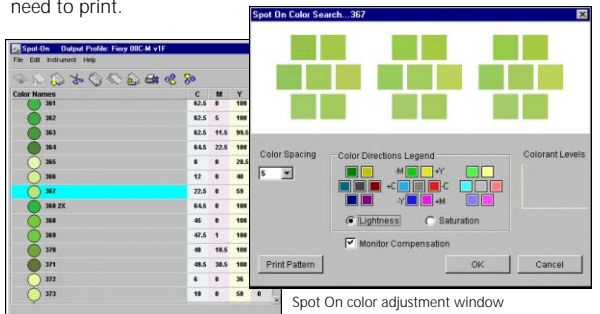
* EPSON Stylus Pro 7600 (UltraChrome™ ink version only)
 EPSON Stylus Pro 9600 (UltraChrome ink version only)
 EPSON Stylus Pro 10000 (all ink versions)
 EPSON Stylus Pro 10600 (all ink versions)



ColorWise Pro Tools main menu

Spot On

EFI's Spot On technology provides a powerful tool to create, manage and use custom spot colors. With Spot On, users can either edit preset spot color formulas, or create new spot colors with custom names. The Spot On system also provides a graphical user-interface to visually assist users in finding the right match for the color they need to print.

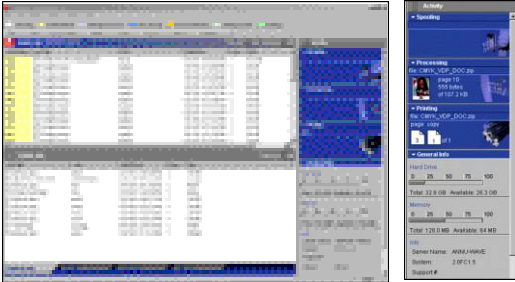


Spot On main window

Spot On color adjustment window

Command Workstation™ 4

The EFI Command Workstation is designed to bring job management to one centralized location. This user-friendly interface allows users to take advantage of advanced features such as nesting and tiling, access printer information, and reprint jobs easily.



Command Workstation 4 interface

Visual Nesting

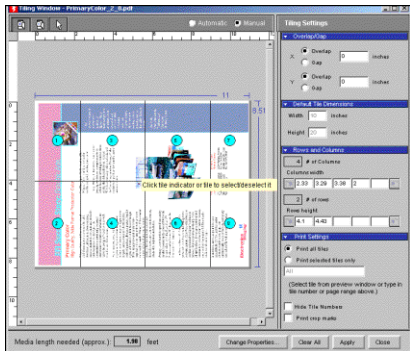
With EFI's visual nesting function, users can choose to nest jobs manually or automatically. They can set the waiting time and indicate the minimum length of the media to be used, as well as the maximum amount of media. This function also allows for auto rotation of images.



Visual Nesting dialog box

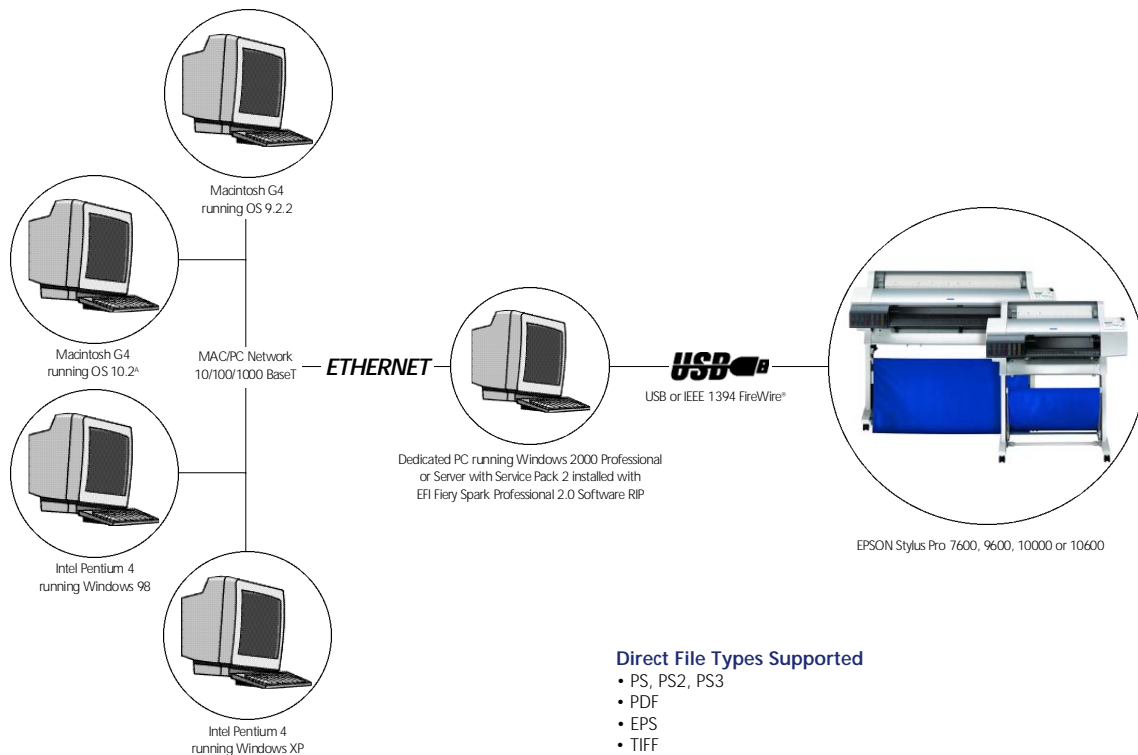
Visual Tiling

The tiling function gives users the flexibility to automatically or manually resize images well beyond the size of the printer. Users can control the amount of overlap or gap on the X or Y axis, the number or rows and columns, the width of the rows, and the height of the columns. They can also choose to print guide markers or individual tiles, rather than an entire image.



Visual Tiling dialog box

EFI Fiery Spark Professional 2.0 RIP Detailed Specifications



Recommended Server System Requirements

- Pentium[®] 4, 1.7 GHz
- 512MB RAM
- 80GB HD
- Windows 2000 Professional or Server with Service Pack 2 installed

Minimum Server System Requirements

- Pentium III, 900 MHz
- 256MB RAM
- 20GB HD
- Windows 2000 Professional or Server with Service Pack 2 installed

Printers Supported

- EPSON Stylus Pro 9600 (UltraChrome Ink version only)
- EPSON Stylus Pro 7600 (UltraChrome Ink version only)
- EPSON Stylus Pro 10000 (all ink versions)
- EPSON Stylus Pro 10600 (all ink versions)

RIP to Printer Connectivity

- USB (EPSON Stylus Pro 7600 and 9600)
- IEEE 1394 FireWire (EPSON Stylus Pro 10000 and 10600)

Direct File Types Supported

- PS, PS2, PS3
- PDF
- EPS
- TIFF

Operating Systems Supported

- Mac OS 8.6 to 9.2.2
- Mac OS 10.2[^] or later
- Windows 98, Me, NT 4.x (Service Pack 4 or later installed), 2000 Professional or Server with Service Pack 2 installed, and XP

Contents

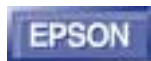
- System Software CD
- User Software CD
- Hardware Authorizing Key
- Quick Setup Guide

Ordering Information

Product	Product Code
EPSON StylusPro 7600 and 9600	
EFI Fiery Spark Professional 2.0 Software RIP	C842832
EFI Fiery Spark Professional 2.0 Software RIP- Demo [®]	C842832DEMO
EPSON StylusPro 10000 or 10600	
EFI Fiery Spark Professional 2.0 Software RIP	C842912
EFI Fiery Spark Professional 2.0 Software RIP- Demo [®]	C842912DEMO

[^] PostScript driver information available at support.epson.com

[®] Demo version available with complete functionality. Prints watermark on every job.



Epson America, Inc.: 3840 Kilroy Airport Way, Long Beach, CA 90806
Epson Canada, Ltd.: 3771 Victoria Park Avenue, Toronto, Ontario M1W 3Z5
Epson Latin America: 6303 Blue Lagoon Drive, Suite 195, Miami, FL 33126
 Internet Website: www.prographics.epson.com

