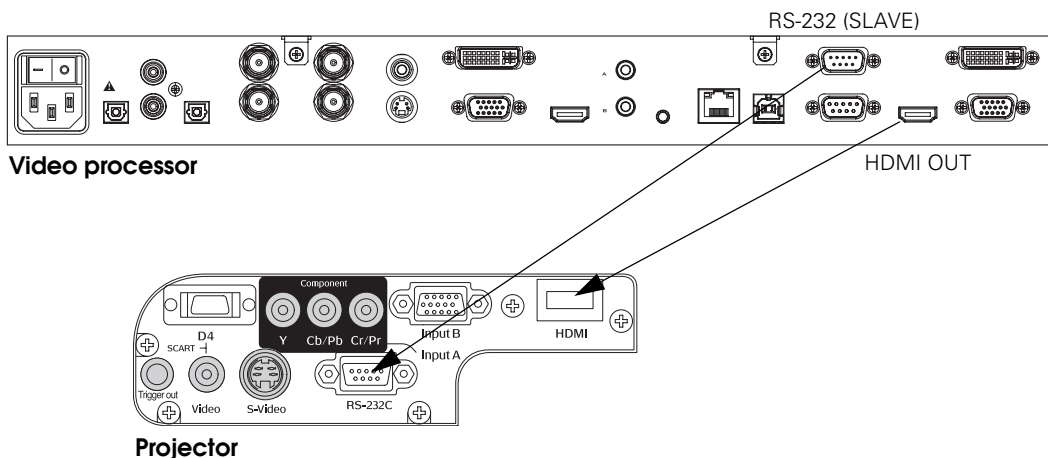


Installer Guide

Follow these instructions to set up the Epson[®] PowerLite[®] Pro Cinema projector and HQV Video Processor

1. Unpack the projector and video processor. Attach the serial number sticker included with the video processor to the *User Manual* for that product.
2. Choose a location for the projector as described in the projector *User's Guide*.
3. Connect an HDMI cable from the video processor to the projector.



4. If you want the video processor to be able to turn the projector on or off, connect an 9-pin, null-modem RS-232 cable from the video processor to the projector.
5. Plug in the power cord for the video processor. Make sure batteries are installed in the video processor remote control.
6. Turn on the power switch on the back of the video processor (above the AC power inlet).

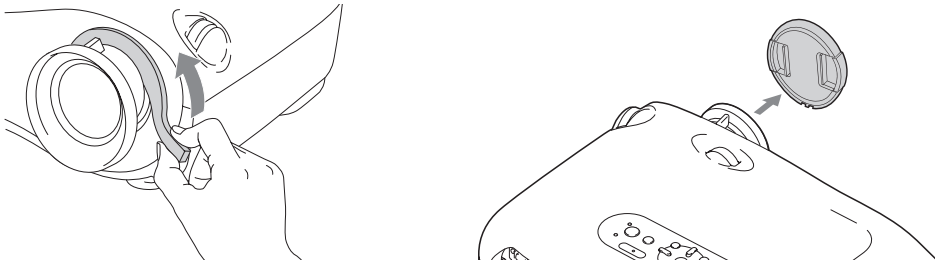
7. After a few moments, the display on the front of the unit should show **Output=720P 60Hz**.

If it does not, press the **POWER** button on the remote control to place the video processor in Setup Mode. (You see Setup Mode on the display.)

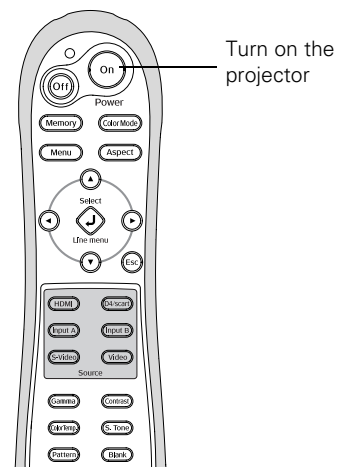
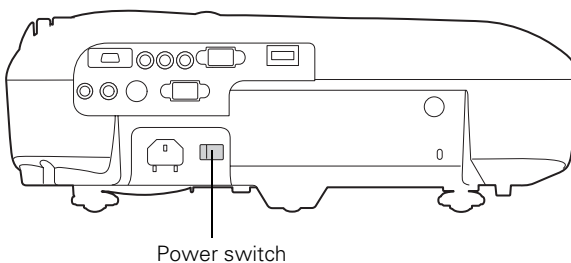
Press the **Menu** button. Then use the **▲** and **▼** buttons to select the output resolution setting (“OUT = xxx”). Use the **◀** and **▶** buttons to change the setting to **OUT = 720p 60 Hz**.

Press the **POWER** button on the remote control to return the video processor to On Mode.

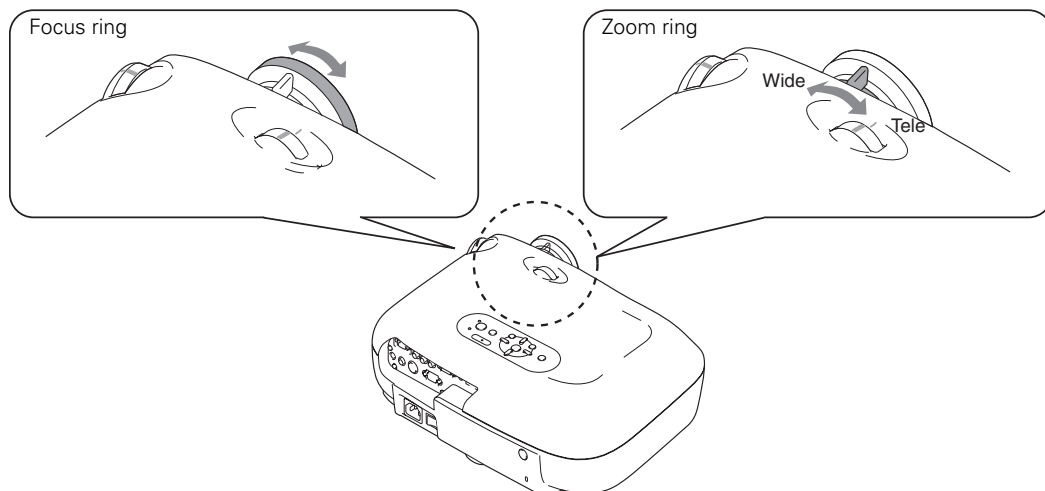
8. Remove the protective lens pad from the projector, then remove the lens cap.



9. Plug in the power cord. Make sure batteries are installed in the projector remote control.
10. Turn on the power switch on the back of the projector, then press the **On** button on the remote control.

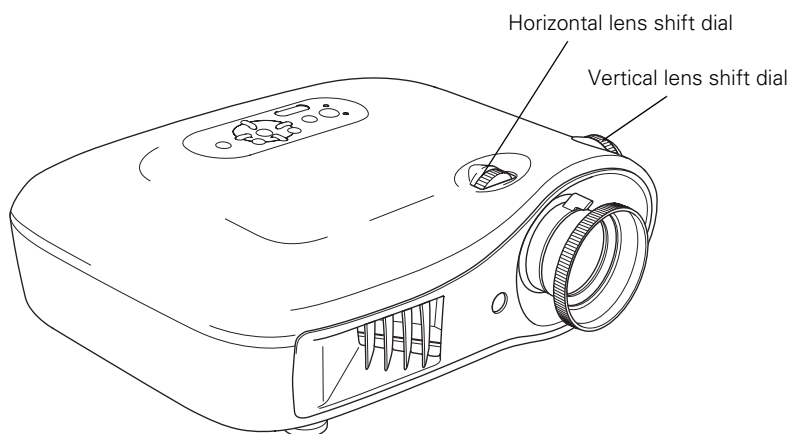


11. Focus and zoom the image using the focus and zoom rings.



12. Position the image using the lens shift dials.

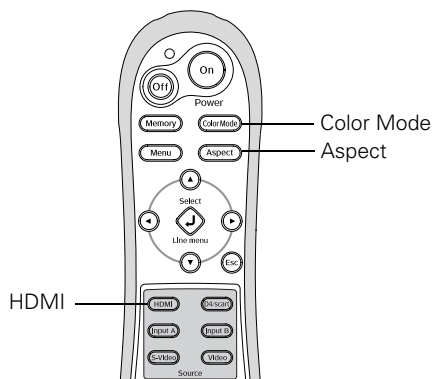
Caution: Do not try to move the lens by hand, or you may damage the projector. Always use the lens shift dials to change the lens position.



13. If the projector is ceiling mounted, you need to invert the image. Press the **Menu** button on the projector remote control and select **Settings > Projection > Front/Ceiling**.

14. If you've tilted the projector up or down toward the screen, you need to perform keystone adjustment. Press the **Menu** button and select **Settings > Keystone**. Use the ◀ and ▶ buttons to adjust the image.

15. Press the **HDMI** button on the projector remote to select HDMI as the input source.



16. Press the **Color Mode** button. Use the **▲** and **▼** buttons to select **Natural**, then press **Select**.
17. Press the **Aspect** button. Use the **▲** and **▼** buttons to select **Through**, then press **Select**.
18. Follow the instructions in the video processor *User Manual* to make any additional adjustments.

Note: Because the video processor is ISF-certified, you must connect it to a laptop computer to perform the final color calibrations using the software utility supplied with the video processor. See the video processor *Service Manual* for instructions.

If you wish to program a universal remote control to work with the projector, you can obtain a list of projector IR control codes from the Epson web site at <http://support.epson.com>.

Copyright Notice

All rights reserved. No part of this document may be reproduced, stored in a retrieval system, or transmitted in any form or by any means, electronic, mechanical, photocopying, recording, or otherwise, without the prior written permission of Epson America, Inc. This publication and the features described herein are subject to change without notice.

Trademarks

Epson is a registered trademark and Exceed Your Vision is a trademark of Seiko Epson Corporation. PowerLite is a registered trademark of Epson America, Inc.

General Notice: Other product names used herein are for identification purposes only and may be trademarks of their respective owners. Epson disclaims any and all rights in those marks.