

# **Epson® SureColor® V7000**

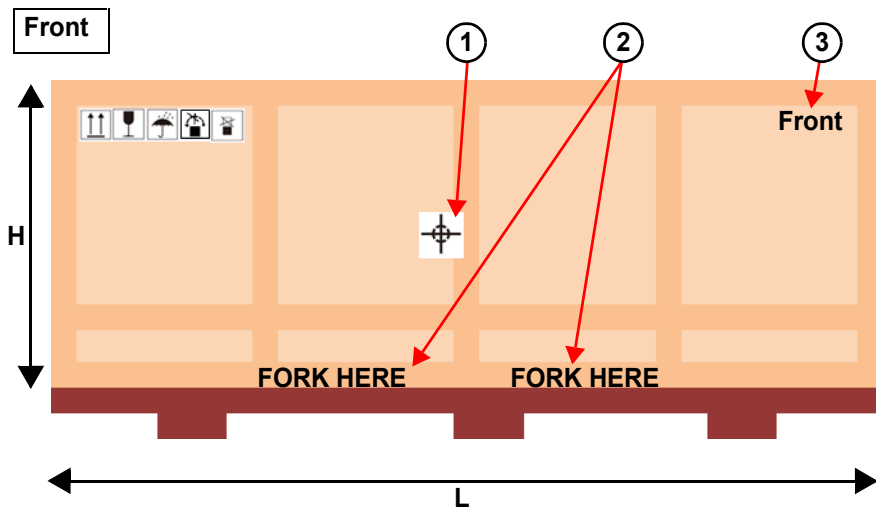
## **Crate Handling and Unpacking Instructions for the Main Unit**

- \* No Stacking**
- \* Unpacking Instructions**

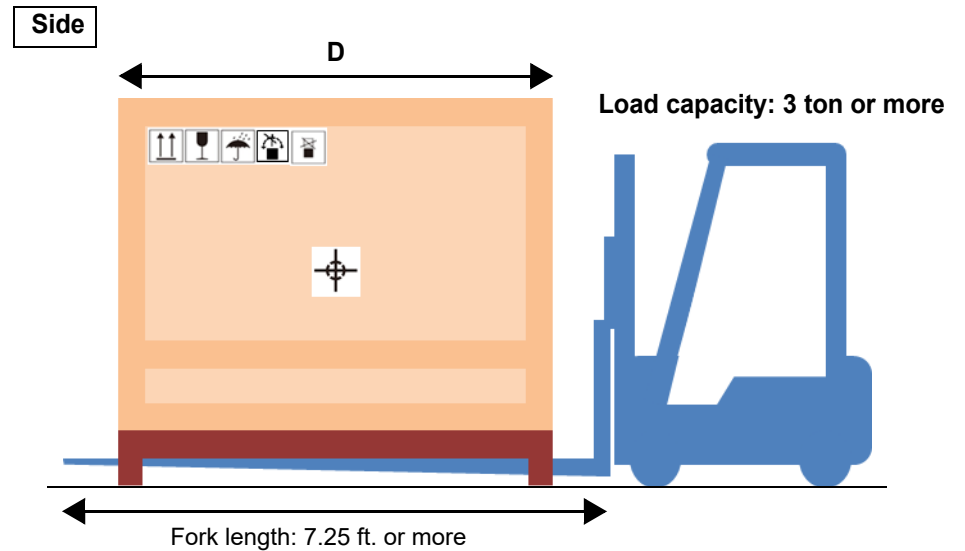
# 1. Off-Loading from Truck

## 1.1 No Dock Off-loading from an Open-Trailer (When Inserting a Forklift from the Front)

- Specification
  - Total weight after packing: 3,572 lb.
  - Packing size: 184" (W) x 89" (D) x 69" (H)
- Forklift requirements
  - Load capacity: 3 ton or more
  - Fork length: 7.25 ft. or more



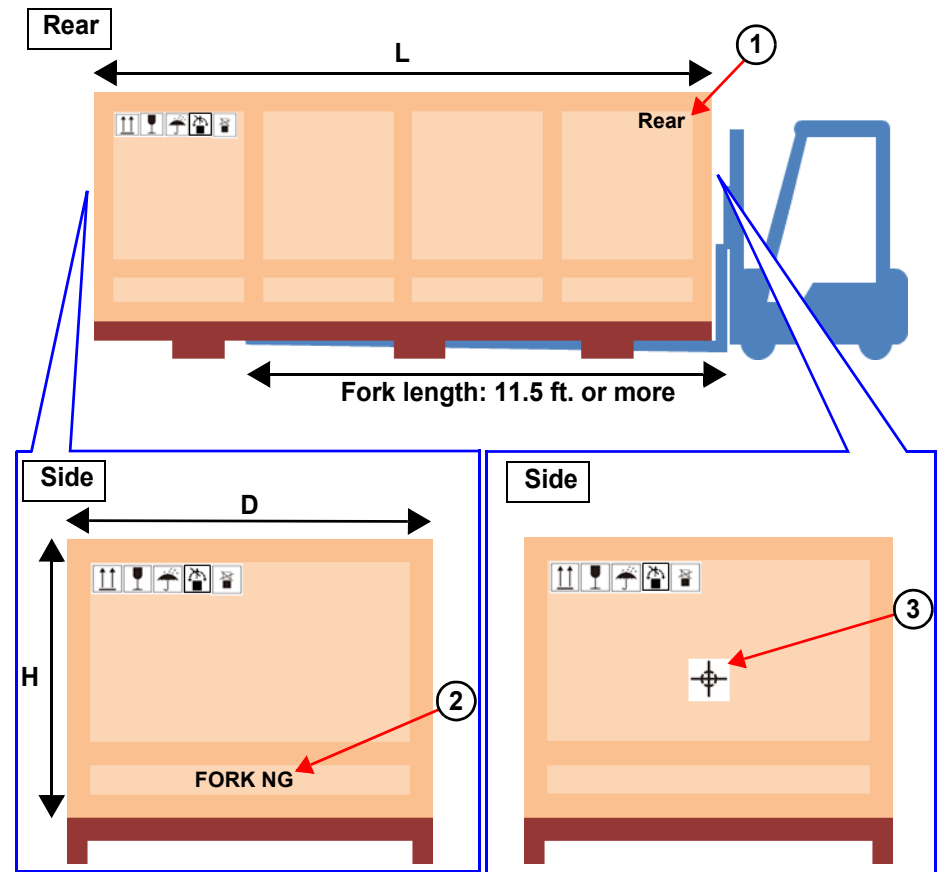
No.	Name
1	Center of gravity position mark
2	Forklift insertion position mark
3	Front position mark



- Insert the fork into the forklift insertion position and lift.
- Insert the forks of the forklift until they are visible from the back of the wooden crate.

## 1.2 No Dock Off-loading from an enclosed trailer (When Inserting a Forklift from the Side)

- Specification
  - Total weight after packing: 3,572 lb.
  - Packing size: 184" (W) x 89" (D) x 69" (H)
- Forklift requirements
  - Load capacity: 3 ton or more
  - Fork length: 11.5 ft. or more



No.	Name
1	Rear position mark
2	Forklift insertion NG mark
3	Center of gravity position mark

- Insert and lift the fork at the position where the center of gravity position mark is centered.
- Insert the forks to the position just before the tip of the packing box hits the Insert the forks to the position just before the tip of the packing box hits the forklift.

## 2. Unpacking

### 2.1 Unpacking the Crate

**Note: If unpacking outside, be sure the door/gate is wide enough for the printer to move into the customer's building.**

- Tools required:**
- 8 mm socket wrench or power drill with 8 mm socket adapter
  - 14 mm socket wrench or power drill with 14 mm socket adapter
  - Hammer
  - Adjustable crescent wrench
  - Blade
  - Steel strap cutter

#### 2.1.1 Dismantle the Crate

1. Using an 8 mm socket wrench or power drill with socket adapter, remove all of the fixing screws from the crate lid.
2. Remove the lid of the wooden crate with the forklift or at least four people.



**When removing the screws, use a step stool or ladder.**

8 mm socket wrench or power drill with socket adapter



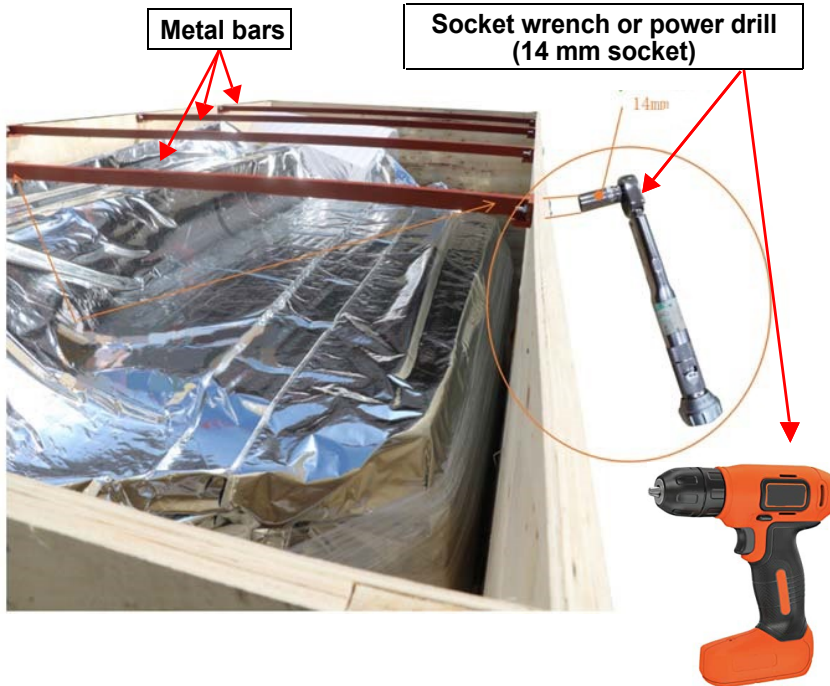
Wooden crate lid



- Using a 14 mm socket wrench or power drill with socket adapter, remove each of the four screws, and then remove the three metal bars.



**Be sure to support the metal bars from underneath as they will fall when the screws are removed.**

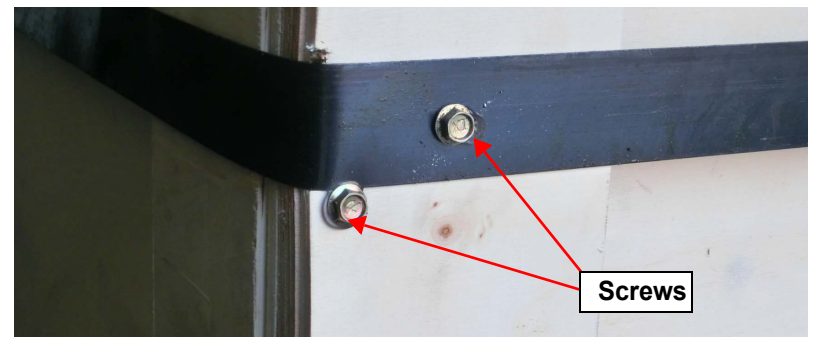
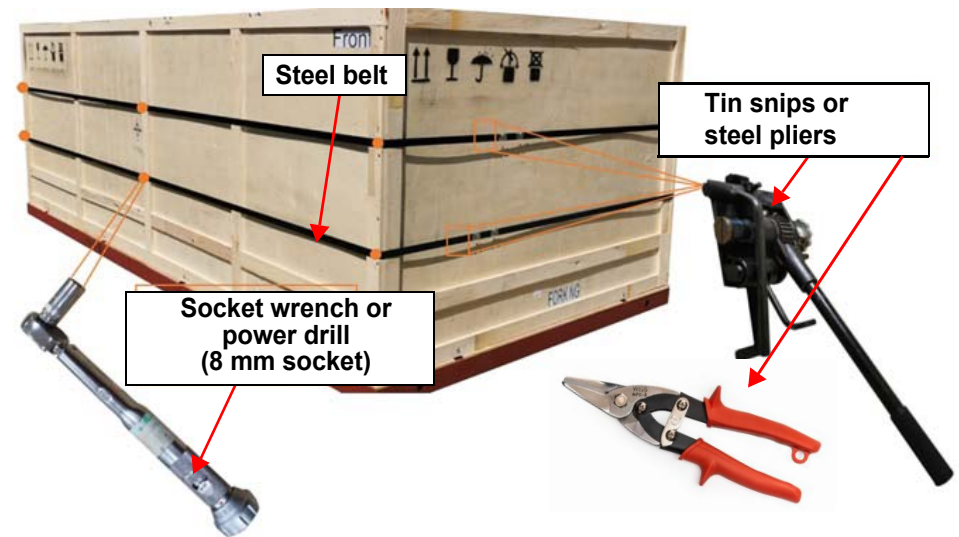


- Cut the two steel belts with tin snips or steel pliers.

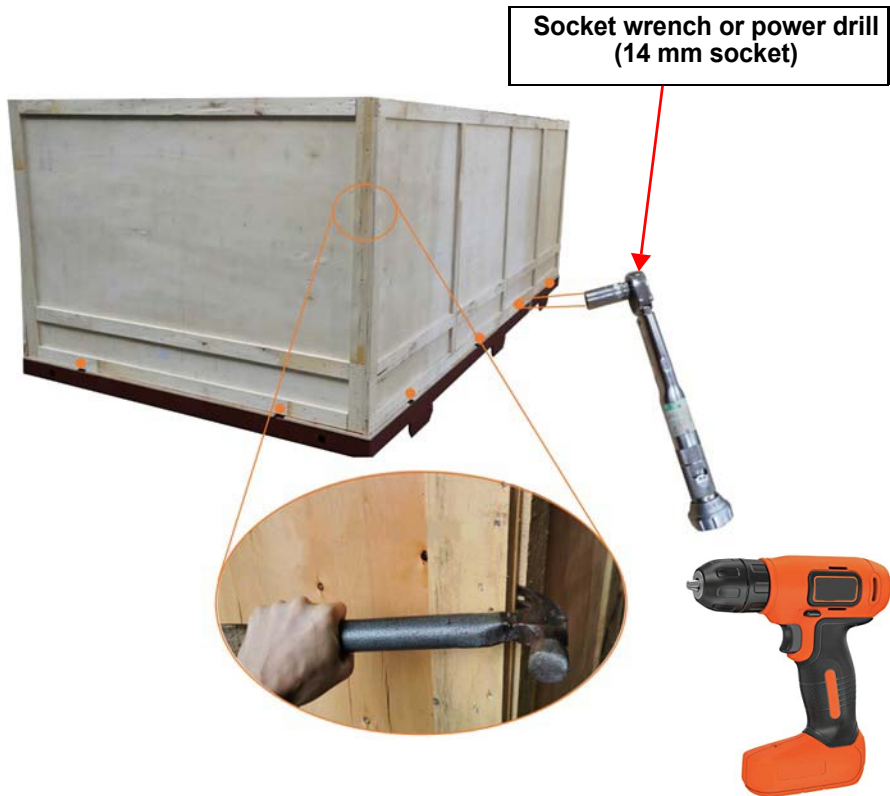


**When cutting the steel belts, wear a helmet and eye protection to prevent injury.**

- Using an 8 mm socket wrench or power drill with socket adapter, remove the screws (2 each on each corner) fixing the steel belts in place.



- Using a 14 mm socket wrench or power drill with 14 mm socket adapter, loosen the M8 fixing screws from the base of the surrounding wooden crate.
- Gently prise open the four corners of the wooden crate with a hammer and remove the panels.



- Move the panels away with the forklift or at least two people.



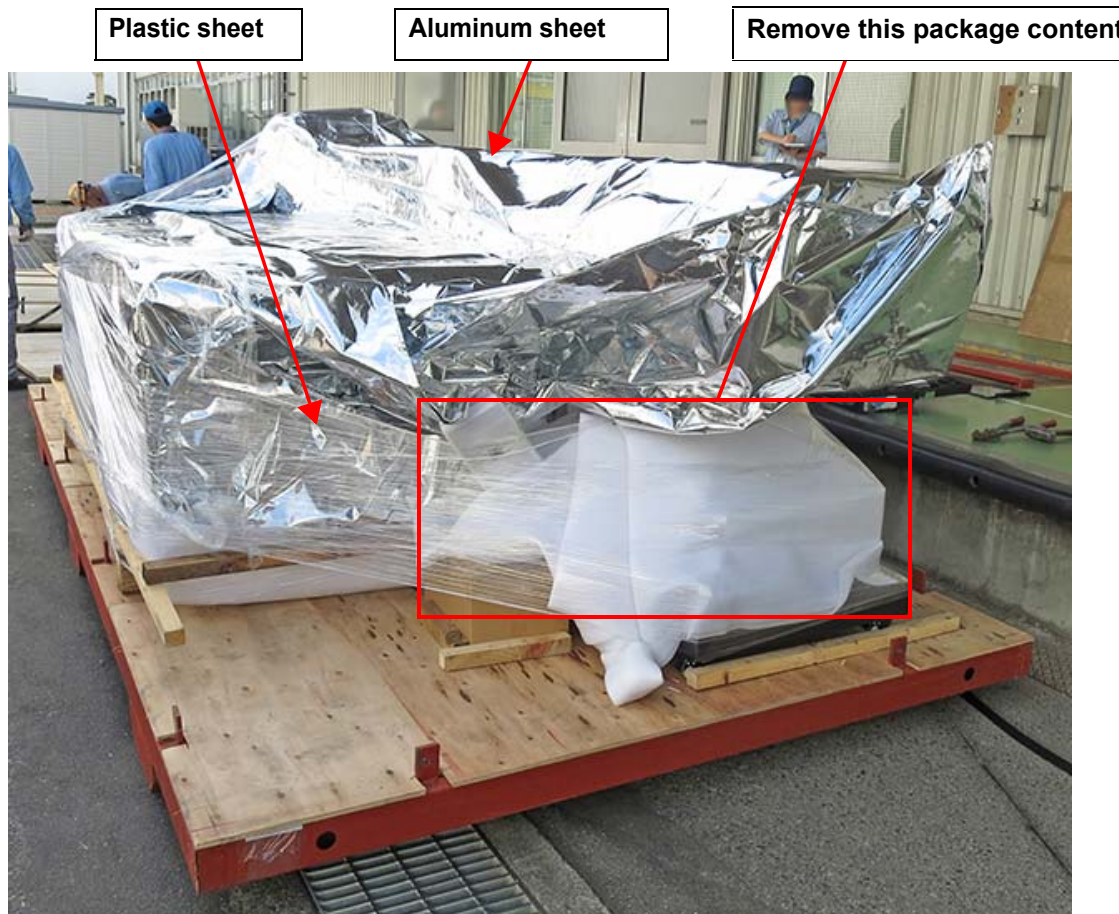
- Remove and move the other panels, too, in the same way.

## 2.1.2 Move the printer

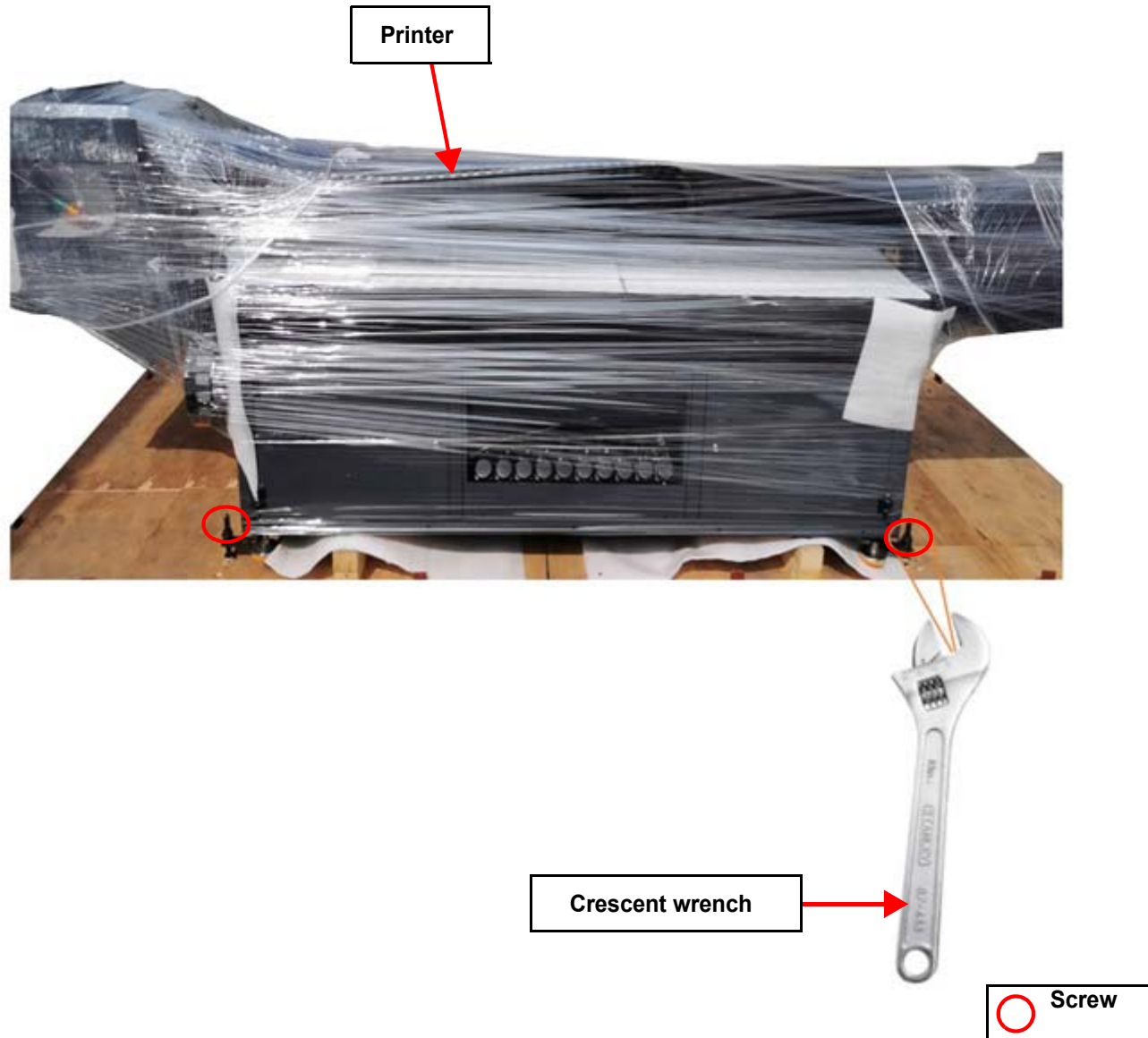
1. Remove package contents and cut and peel off the aluminum sheet wrapping the printer with scissors or a similar tool.



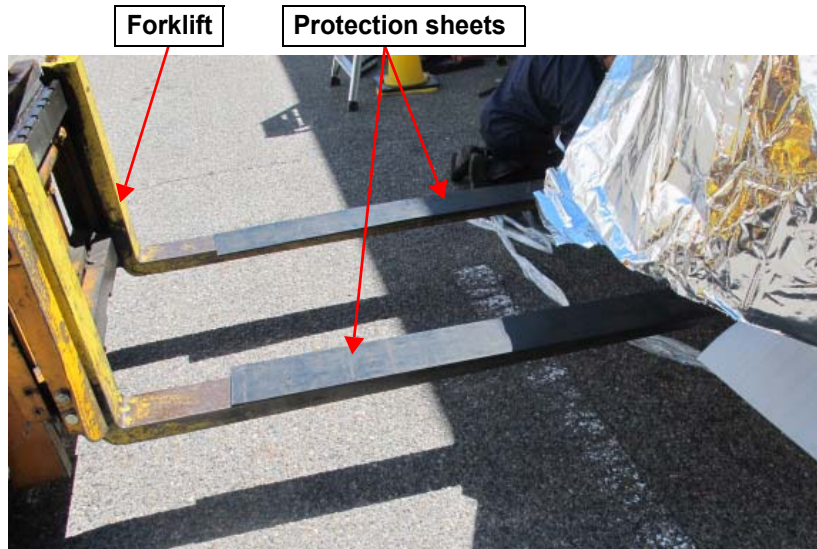
**In strong winds, take care to prevent peeled off plastic sheet and aluminum sheet from being blown away.**



- Using a crescent wrench, remove the screws (total of 4) fixing the printer to the pallet.



3. Add protection material (e.g., rubber or foam) to the forklift forks to avoid damaging the printer.



4. Lift the printer off the metal pallet and place the printer on a flat surface.



The locations where the forks are inserted are marked on the wooden crate. Adjust the width between the forks with these marks.



Markings



5. Push the printer to its operating location by hand.



**When moving the printer, be sure to push the table part of the printer. Do not push the printer by its gantry.**



**A total of four workers, one worker at each corner of the printer, must move the printer.**

**Do not push the gantry**



## 3. Clean Up

1. Remove the wood from the metal pallet.



2. Lift the wooden panels and set them on the metal pallet, and then move them with the forklift. (Dispose of the wooden panels and the metal pallet.)



**Dispose of or recycle all packaging materials in accordance with local laws and regulations.**

