

Start Here



PictureMate®
personal photo lab



PictureMate Dash™
(PM 260)



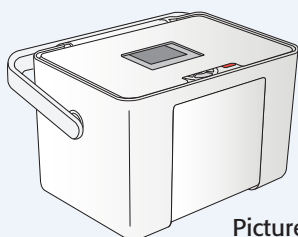
PictureMate Zoom™
(PM 290)

Follow these steps to set up your PictureMate Dash or Zoom and print—no computer required!

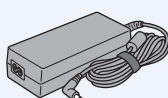
Note: PictureMate Dash is shown throughout, but the steps are the same for PictureMate Zoom. To print from your computer, see the *Basics* book and your CD after completing these steps.

1 *Unpack*

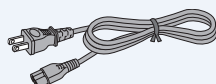
PictureMate® comes with all these items in the box.



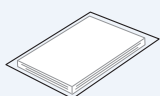
PictureMate



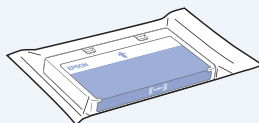
Power adapter



Power cable



PictureMate
photo paper



Initial PictureMate
photo cartridge

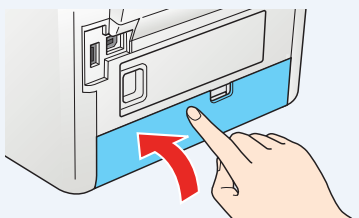
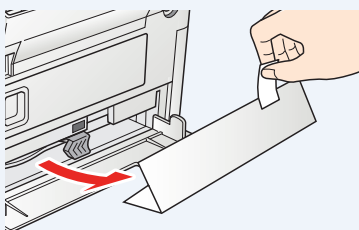
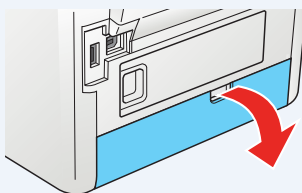


Basics book



Printer Software CD

- 1 Remove all the tape and packing material from the outside of PictureMate.
- 2 Open the cartridge door on the back of PictureMate.
- 3 Remove the packing material from inside the cartridge slot.
- 4 Close the cartridge door.



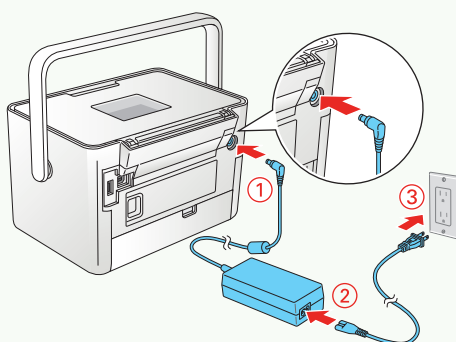
411058000

2 *Plug In and Turn On*

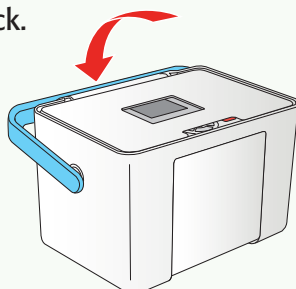
1 Connect the power adapter to the back of PictureMate.

2 Connect the power cable to the power adapter.

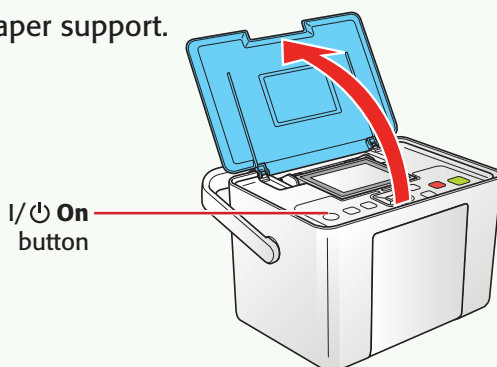
3 Plug the other end of the power cable into a power outlet.



4 Flip the handle to the back.

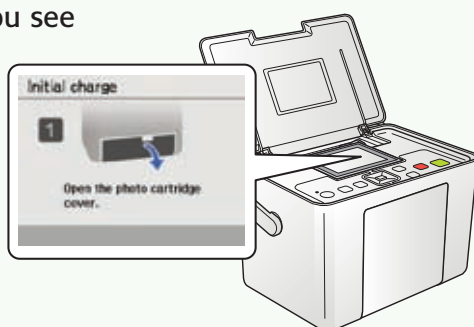


5 Open the paper support.



6 Press the I/⏻ On button to turn on PictureMate.

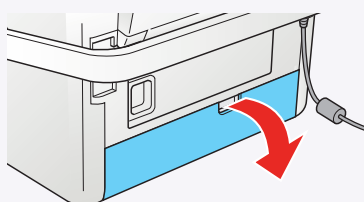
After a moment, you see this on the photo viewer screen:



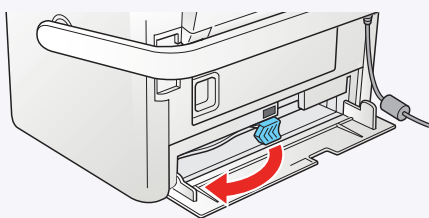
Now you can install your initial photo cartridge.

3 *Install the Initial Photo Cartridge*

1 Turn PictureMate around and open the cartridge door.

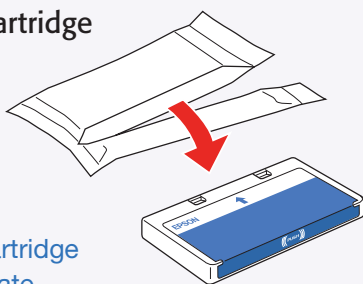


- 2** Slide the cartridge lever left to the **Release** position.

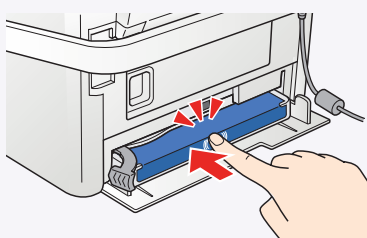
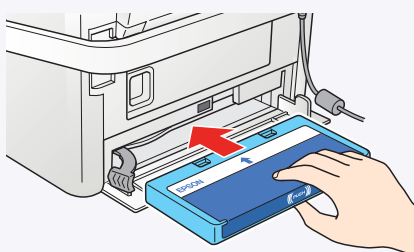


- 3** Remove the initial photo cartridge from its package.

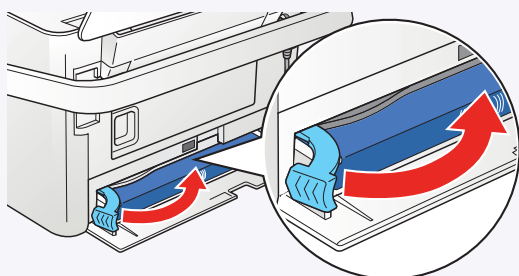
Caution: Do not install a different PictureMate cartridge for initial setup. Install only the initial photo cartridge that came with your PictureMate.



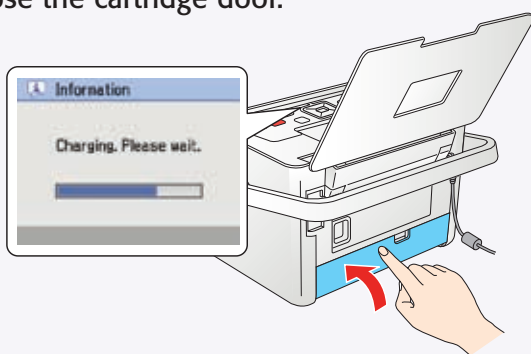
- 4** Slide the cartridge straight into the slot, label side up, until it clicks into place. It will not go in all the way.



- 5** Slide the lever all the way right, to the **Lock** position.

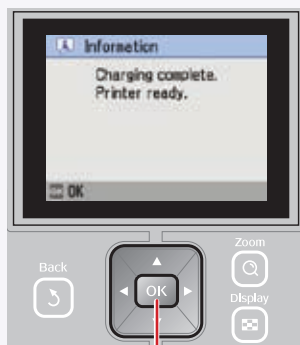


- 6** Close the cartridge door.



PictureMate charges the print head for 3 to 4 minutes and displays the screen above.

- 7** When you see the **Charging complete** message on the photo viewer screen, press **OK**.



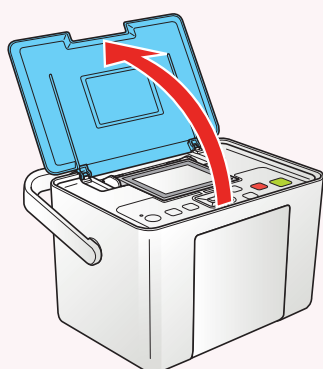
Press here

4 Load Paper

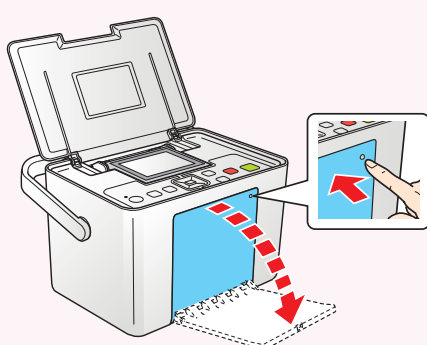
PictureMate comes with genuine Epson® glossy photo paper made especially for printing lab quality photos.

Caution: Don't load or print on plain paper; this may damage PictureMate.

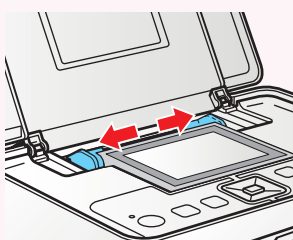
- 1 Move the handle to the back and open the paper support, if necessary.



- 2 Press the corner of the output tray to open it.

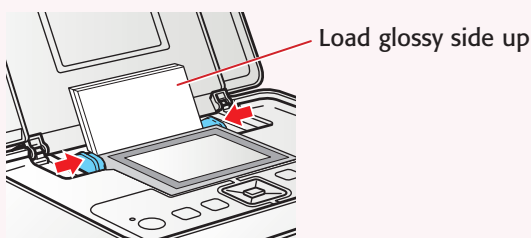


- 3 Slide the edge guides outward.

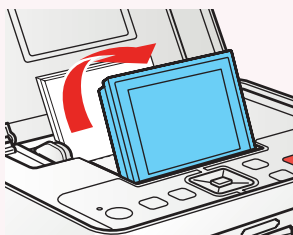


- 4 Load up to 20 sheets at a time. Fan the sheets to slightly separate them.

- 5 Place your paper into the slot between the edge guides with the glossy side up. Slide the edge guides inward slightly.



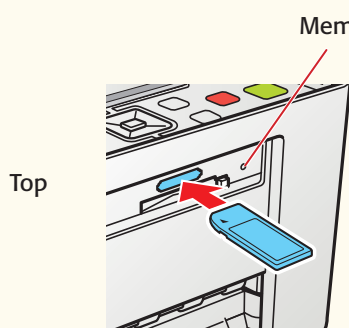
- 6 Raise the photo viewer screen.



Note: Keep unused paper in the original package and store it flat to prevent curling.

5 *Insert a Memory Card*

- 1 Remove the memory card containing photos from your digital camera.
- 2 Insert your memory card into the correct slot on PictureMate.



Memory card light



SD™ (Secure Digital)
SDHC™ (High Capacity)
mini SD™ *
mini SDHC *
micro SD *
micro SDHC *
MMC™ (MultiMediaCard™)
xD Picture Card™
xD Picture Card (Type M and Type H)
Sony Memory Stick® **
Memory Stick Duo™ *
Memory Stick Micro *
Memory Stick PRO™
Memory Stick PRO Duo™ *
MagicGate™ Memory Stick **
MagicGate Memory Stick Duo™ *

Microdrive™
CompactFlash® (Type I and II)

* Adapter required
** Maximum capacity 128MB

- 3 Push the card in until it stops (it won't go in all the way). The memory card light flashes and PictureMate tells you how many photos are on the card.

Note: Insert just one card at a time. PictureMate will not read multiple cards at once.



6 *Print Your Photos*

PictureMate's photo viewer screen makes it easy to select the photos you want to print, choose a layout, and even crop.





Select Some Photos

- 1 Press ◀ or ▶ to view your photos.
- 2 Press **OK** to select a photo for printing.
- 3 To print more than one copy, press ▲ to increase the number. Press ▼ to decrease it.
- 4 To select more photos, press ◀ or ▶ to view them and press **OK** to select one. Repeat step 3 to select more copies, if necessary.




- 5 Press  **Print** and use ◀ or ▶ to review your selected photos. Then press  **Print** again to print.

Select a Layout

- 1 Press the  **Menu** button.
- 2 Press  to select **Print Settings**, then press **OK**.
- 3 Press **OK** to select **Layout**.
- 4 Press  or  to select the layout you want, then press **OK**.



Crop Your Photos

You can press the  **Zoom** button to enlarge your image up to 5 times.

You can select the area you want to print, and PictureMate will crop out the rest. This does not change your original image.



More on PictureMate

Check your printed manual

See the *Basics* book for instructions on printing from PictureMate, your computer, and other devices. Also learn how to save photos to or print photos from a CD, replace your Print Pack (photo paper and photo cartridge), take care of PictureMate, and solve problems.

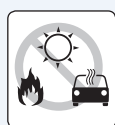


Check your on-screen manual

After you install your PictureMate software from the CD, you'll see an icon for your **PictureMate User's Guide** on your computer screen. Double-click that icon for comprehensive instructions on using PictureMate and its software.



Note: For information on possible software updates for PictureMate, go to epson.com/support, select **Printers**, and select your product under **Personal Photo Lab**. Then check for updated software in the **Drivers & Downloads** section.



Caution: To avoid damaging your PictureMate, keep it out of the sun and don't leave it in your car or other location where it can get too hot or too cold.

Epson and PictureMate are registered trademarks and Exceed Your Vision is a trademark of Seiko Epson Corporation.

General Notice: Other product names used herein are for identification purposes only and may be trademarks of their respective owners. Epson disclaims any and all rights in those marks.

© 2007 Epson America, Inc. 5/07

CPD-23838
Printed in XXXXXX XX.XX-XX XXX